



Scale 1:240 Imperial

Well Name: Reif Trust #1-23
 Surface Location: 1856' FSL_1063' FWL Sec 23-18S-14W
 Bottom Location:
 API: 15-009-25980-00-00
 License Number:
 Spud Date: 5/15/2014 Time: 4:30 PM
 Region: Barton County
 Drilling Completed: 5/22/2014 Time: 6:55 AM
 Surface Coordinates: Y = 656229 & X = 1901370
 Bottom Hole Coordinates:
 Ground Elevation: 1901.00ft
 K.B. Elevation: 1914.00ft
 Logged Interval: 2800.00ft To: 3540.00ft
 Total Depth: 3500.00ft
 Formation: Arbuckle
 Drilling Fluid Type: Chemical/Fresh Water Gel

OPERATOR

Company: Shelby Resources, LLC
 Address: 445 Union Blvd, Suite 208
 Lakewood, CO 80228
 Contact Geologist: Janine Sturdavant
 Contact Phone Nbr: 303-907-2209 / 720-274-4682
 Well Name: Reif Trust #1-23
 Location: 1856' FSL_1063' FWL Sec 23-18S-14W API: 15-009-25980-00-00
 Pool: Field: Wildcat
 State: Kansas Country: USA

LOGGED BY



Company: Shelby Resources, LLC
 Address: 445 UNION BLVD. Suite 208
 LAKEWOOD, CO. 80228
 Phone Nbr: 203-671-6034
 Logged By: Geologist Name: Jeremy Schwartz

NOTES

The Shelby Resources Reif Trust #1-23 was drilled to a total depth of 3500', bottoming in the Arbuckle. A TookeDaq gas detector was employed in the drilling of said well.

4 DST's were conducted throughout the Lansing Kansas-City and Arbuckle Zones. The DST reports can be found at the bottom of this log.

Due to the DST results, sample shows, gas kicks, and log analysis it was determined by all parties involved to further test the well through production pipe. The dry samples were saved and will be available for further review at the Kansas Geological Society Well Sample Library, located in Wichita, KS.

Respectfully Submitted,
Jeremy Schwartz
Geologist

SURFACE CO-ORDINATES

Well Type: Vertical

Longitude: N/S Co-ord: Y = 656229
 E/W Co-ord: X = 1901370

Latitude:

CONTRACTOR

Contractor: Sterling Drilling Co
 Rig #: 5
 Rig Type: mud rotary
 Spud Date: 5/15/2014
 TD Date: 5/22/2014
 Rig Release:
 Time: 4:30 PM
 Time: 6:55 AM
 Time:

ELEVATIONS

K.B. Elevation: 1914.00ft
 K.B. to Ground: 13.00ft
 Ground Elevation: 1901.00ft

DATE	DEPTH	ACTIVITY
Sunday, May 18, 2014	2800'	Geologist Jeremy Schwartz on location @ 1315hrs, DRLG ahead through Topeka, TOH, rig down for repairs (tripped into surface casing at 3066' for pump rod)
Monday, May 19, 2014	3066'	Resume DRLG, DRLG ahead through Heebner, LKC, CFS @ 3184', Resume DRLG ahead through LKC, CFS @ 3226', Resume DRLG ahead, CFS @ 3240', Strap Out, Conduct DST #1 in LKC "A-F"
Tuesday, May 20, 2014	3240'	Successful Test, TIH, CTCH 1 hour, Resume DRLG through LKC G, CFS @ 3267', Resume DRLG, CFS @ 3336', Resume Drlg, CFS @ 3378', Resume DRLG, CFS @ 3405' Resume DRLG, CFS @ 3411, Conduct DST #2 in Arbuckle
Wednesday, May 21, 2014	3411'	Successful Test, TIH, CTCH 1 hour, Resume DRLG, CFS @ 3419', Conduct DST #3 in the Arbuckle, Successful test, TIH, CTCH 1 hour, Resume DRLG, CFS @ 3428' Conduct DST #4 in the Arbuckle,
Thursday, May 22, 2014	3428' 3500'	Successful Test, TIH, CTCH 1 hour, Resume DRLG ahead to TD, TD @ 3500' reached at 0655hrs, Conduct Logging Operations, Logging operations complete @ 1730hrs Geologist Jeremy Schwartz off location @ 1800hrs

CLIENT:	SHELBY RESOURCES, LLC
WELL NAME:	REIF TRUST #1-23
LEGAL:	NE SE NW SW 23-185-14W
COUNTY:	BARTON
API:	15-009-25980-00-00
DRLG CONTRACTOR:	STERLING DRILLING CO.
RIG #:	5
DOGHOUSE #:	620-388-5433
TOOLPUSHER:	ALAN LOFTIS
CELL #:	620-388-2736





REIF TRUST #1-23		SE SW NE SW 22-185-14W		C SE NE 23-185-14W		SW NE NE NE 21-185-14W																
KB	1914	KB	1916	KB	1900	KB	1942															
LOGG TOPS	SAMPLE TOPS	COMP. CARD	LOG	SMPL.	COMP. CARD	LOG	SMPL.	COMP. CARD	LOG	SMPL.												
FORMATION	DEPTH	DATUM	DEPTH	DATUM	DEPTH	DATUM	DEPTH	DATUM	DEPTH	DATUM	DEPTH	DATUM	DEPTH	DATUM	DEPTH	DATUM	DEPTH	DATUM				
ANHYDRITE TOP	842	1072	842	1072	856	1060	+	12	+	12	830	1070	+	2	+	2	886	1056	+	16	+	16
BASE	870	1044	864	1050	882	1034	+	10	+	16	860	1040	+	4	+	10	912	1030	+	14	+	20
TOPEKA	2860	-946	2862	-948	2878	-962	+	16	+	14	2852	-952	+	6	+	4	2898	-956	+	10	+	8
HEEBNER SHALE	3076	-1162	3078	-1164	3092	-1176	+	14	+	12	3074	-1174	+	12	+	10	3115	-1173	+	11	+	9
TORONTO	3091	-1177	3088	-1174	3100	-1184	+	7	+	10	3085	-1185	+	8	+	11	3123	-1181	+	4	+	7
DOUGLAS SHALE	3106	-1192	3110	-1196	3114	-1198	+	6	+	2	3100	-1200	+	8	+	4	3135	-1193	+	1	-	3
BROWN LIME	3159	-1245	3160	-1246	3167	-1251	+	6	+	5	3157	-1257	+	12	+	11	3188	-1246	+	1	+	0
LKC	3168	-1254	3170	-1256	3176	-1260	+	6	+	4	3165	-1265	+	11	+	9	3196	-1254	+	0	-	2
LKC G	3251	-1337	3252	-1338	3249	-1333	-	4	-	5	3236	-1336	-	1	-	2	3267	-1325	-	12	-	13
MUNCIE CREEK	3294	-1380	3296	-1382	3307	-1391	+	11	+	9	3290	-1390	+	10	+	8	3328	-1386	+	6	+	4
LKC H	3298	-1384	3300	-1386	3313	-1397	+	13	+	11	3298	-1398	+	14	+	12	3331	-1389	+	5	+	3
LKC J	3330	-1416	3331	-1417	3345	-1429	+	13	+	12	3330	-1430	+	14	+	13	3363	-1421	+	5	+	4
STARK SHALE	3348	-1434	3350	-1436	3363	-1447	+	13	+	11	3348	-1448	+	14	+	12	3382	-1440	+	6	+	4
BKC	3372	-1458	3373	-1459	3390	-1474	+	16	+	15	3376	-1476	+	18	+	17	3416	-1474	+	16	+	15
CONGLOMERATE	3386	-1472	3388	-1474	3395	-1479	+	7	+	5	3389	-1489	+	17	+	15	3420	-1478	+	6	+	4
ARBUCKLE	3400	-1486	3402	-1488	3424	-1508	+	22	+	20	3431	-1531	+	45	+	43	3439	-1497	+	11	+	9
RTD			3500	-1586	3550	-1634			+	48	3435	-1535			-	51	3507	-1565				21
LTD			3500	-1586	3549	-1633	+	47									3504	-1562	-	24		

PROGNOSIS	
ANHYDRITE TOP	835 1079
HEEBNER SHALE	3080 -1166
LANSING	3164 -1250
BKC	3378 -1464
ARBUCKLE	3422 -1508

TESTED	TESTED	TESTED
	DST #1 (3180 - 3240) LKC GTS 31MIN 1000' CO, 400'MO, 40'GCM BHP: 1055-685#/30"	DST #1 (3315 - 3340) LKC "H" Times: 15-45-45-90 1ST OPEN BOB 1MIN BB BOB, GTS THROUGHOUT 2nd Open BOB 1MIN, GTS 1MIN BB BOB
	DST #2 (3294 - 3340)	

RTD	3500	-1586	60' GIP, 60' GCW w/spots oil, 300'WTR BHP: 1155-1060#/30"	2844' O, 120' OCM (50%O/50%M) SIP: 1066 - 1064 DST #2 (3347 - 3420) LKC "I-K" Times: 10-45-10 1st Open Very weak surface blow NO BB 2ND OPEN VERY WEAK SURGE DID NOT BUILD, PULLED TOOL 1' OCM (95%M, 5%D) SIP: 86 - 82 DST #3 (3404 - 3451) ARBUCKLE Times: 15-45-45-60 1ST OPEN WEAK BLOW BUILT TO 4IN NO BB 2ND OPEN WEAK BLOW BUILT TO 10IN NO BB 180' MW (80%WTR, 20%M) 150' MW (60%WTR, 40%M) SIP: 1152 - 1151
<i>INFO</i>			<i>INFO</i>	
			PERF 3236 - 3240 (LKC) IP: 228OPD, NW	PERF 3331 - 3338 (LKC "H")

ROCK TYPES

 Congl	 Lmst fw<7 shale, gry	 Carbon Sh shale, red
 Dolprim		

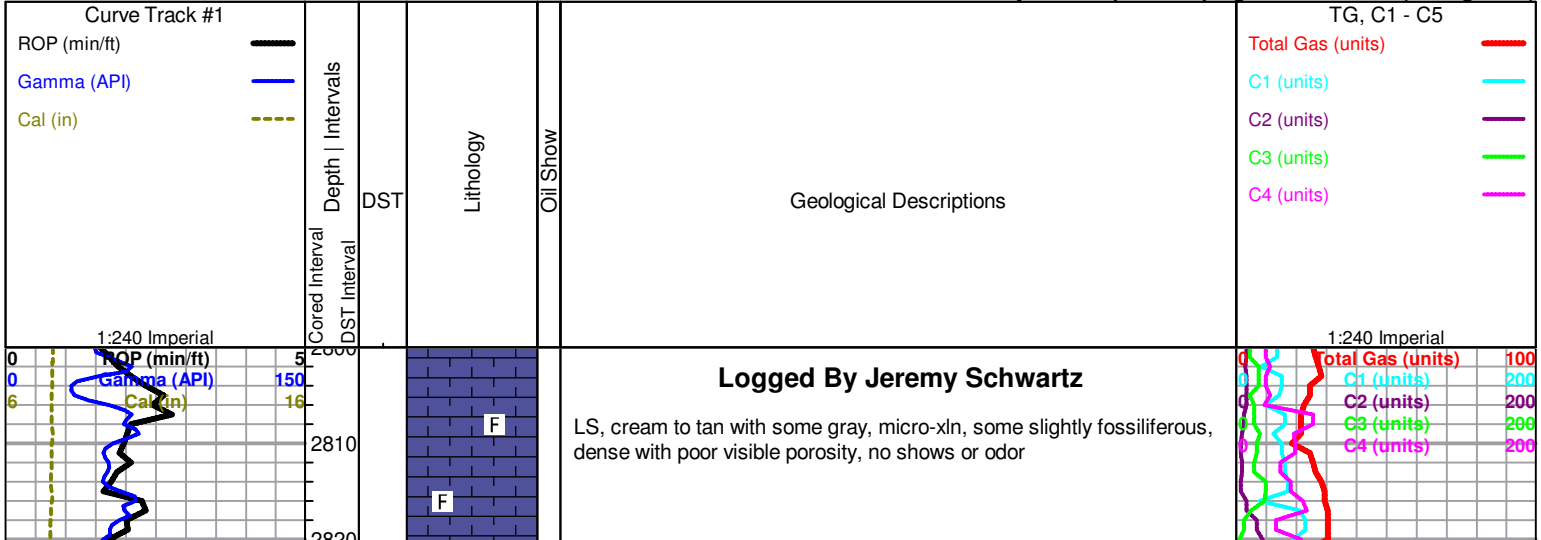
ACCESSORIES

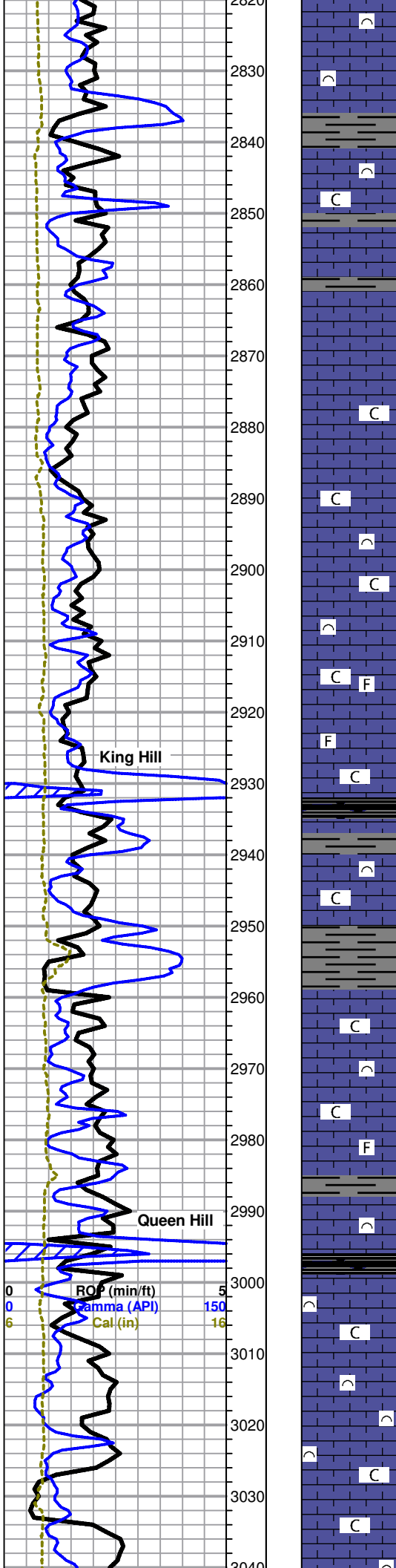
FOSSIL ∩ Bioclastic or Fragmental F Fossils < 20%	STRINGER ~ Chert L Limestone S Siltstone	TEXTURE C Chalky
--	--	----------------------------

OTHER SYMBOLS

MISC DR Daily Report Digital Photo Document Folder Link Vertical Log File Horizontal Log File Core Log File Drill Cuttings Rpt	Oil Show ● Good Show ● Fair Show 50-75 ● Poor Show 25-50 ○ Spotted or Trace 1-25 ○ Questionable Stn D Dead Oil Stn ■ Fluorescence * Gas	DST DST Int DST alt
--	--	----------------------------------

Printed by GEOstrip VC Striplog version 4.0.7.0 (www.grsi.ca)





LS, cream to tan with some gray, micro-xln, some fossiliferous, dense with poor visible porosity, no shows or odor

Howard 2840 (-926)

LS, cream to tan and gray, micro-xln, fossiliferous and dense with poor visible porosity, some scattered soft and chally in part, no shows or odor

Topeka 2862 (-948)

LS, cream to tan and gray, micro-xln, mostly lithographic, some fossiliferous, hard and dense with poor visible porosity, no shows or odor

LS as above, slightly chalky, no shows or odor

LS, mostly cream with some gray, micro-xln, some fossiliferous and dense with poor visible porosity, some soft and chalky in part, no shows or odor

King Hill

LS, cream to gray with some scattered off-white, some fossiliferous, some lithographic, dense with poor visible porosity, also with some soft and chalky in part, slightly chalky, no shows or odor

LS as above

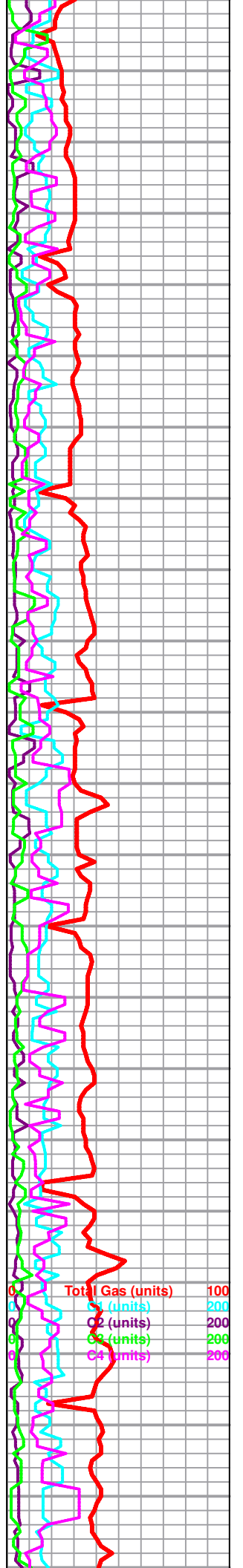
LS, cream to off-white with some scattered gray, micro-xln, some fossiliferous, some lithographic, dense with poor visible porosity, some soft and chalky, no shows or odor

Queen Hill

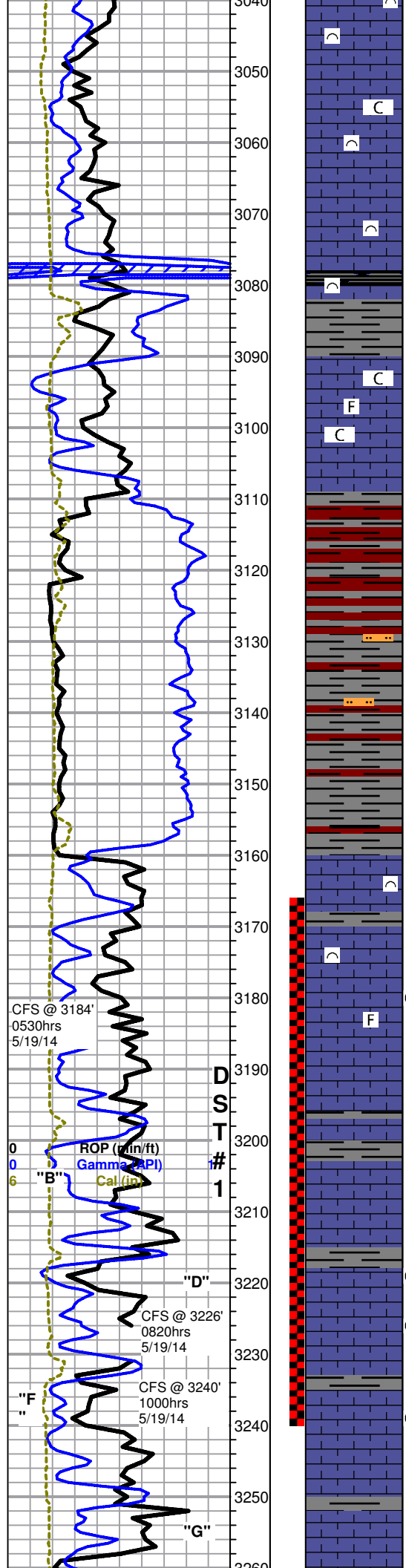
LS as above, no shows or odor

LS, cream to off-white with some scattered gray, micro-xln, fossiliferous, mostly dense with poor visible porosity, some scattered soft sand chalky in part, no shows or odor

LS as above, slightly chalky, no shows or odor



Total Gas (units) 100
 C1 (units) 200
 C2 (units) 200
 C3 (units) 200
 C4 (units) 200



LS, cream to gray, micro-xln, some fossiliferous, some lithographic, mostly dense with poor visible porosity, some scattered soft and chalky in part, no shows or odor

LS, cream to gray, micro-xln, fossiliferous, some scattered lithographic, dense with poor visible porosity, no shows or odor

LS as above

Heebner 3078 (-1164)
Shale, black carbonaceous, blocky and dense

LS, cream to off-white, lithographic, mostly dense with poor visible porosity, some soft and chalky in part, chalky, no shows or odor

Douglas Shale 3110 (-1196)
Shale, red and gray, mostly soft and waxy

Shale, mostly gray with some scattered red, soft and waxy as above, trace silty

As above

Brown Lime 3160 (-1246)
LS, brown, micro-xln, fossiliferous, hard and dense with no visible porosity, no shows or odor

LKC 3170 (-1256)
Reif Trust #1-23dst#1.jpg
LS, cream, micro-xln, mostly lithographic and dense with poor visible porosity, no shows or odor

3184' 20" LS, cream, micro-xln, mostly lithographic and dense with poor visible porosity, few very scattered chips (~5-10%) with one to two small vugs to slightly vuggy edges with black stain in porosity only, very slow weak cut, poor fleeting odor

40" LS, cream with some scattered gray, micro-xln, mostly lithographic, some scattered slightly fossiliferous, dense with poor visible porosity, no shows or odor

'LS, mostly cream with some gray, micro-xln, mostly lithographic, some slightly fossiliferous, dense with poor visible porosity, no shows or odor

LS, gray to cream, micro-xln, fossiliferous, dense with poor visible porosity, some (~20-30%), with scattered visible vf pinpoint porosity and scattered brown stain mostly in porosity only, few chips with very slight show free oil bleeding from matrix when left under lamp, very weak cut, poor fleeting odor

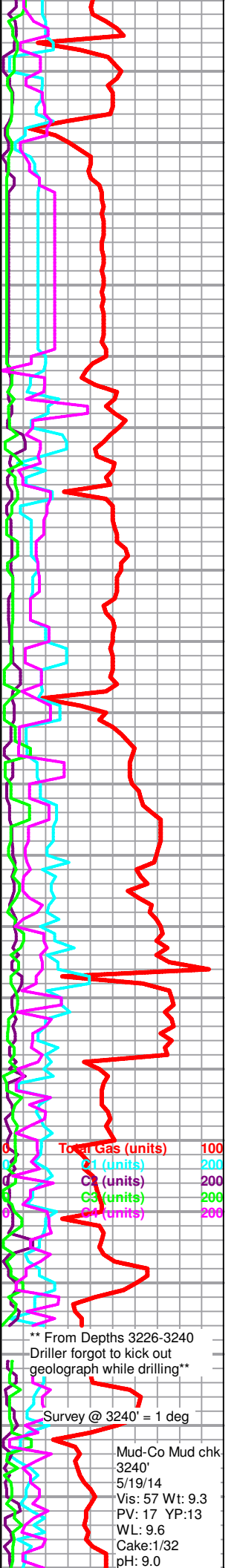
3226' 30" LS, mostly gray with some cream, micro-xln, fossiliferous and dense with poor visible porosity, few scattered chips (~5%) with several small edge vugs and brown to black stain in vugs only, upon break chips show poor inter-xln staining, NSFO, poor fleeting odor

LS, gray to cream, micro-xln, fossiliferous, mostly dense with poor visible porosity, few chips (<5%) with very scattered pinpoint porosity and one to two small edge vugs with brown to black residual stain, no odor

3240' 30" LS, gray to cream, micro-xln, some fossiliferous, some lithographic, dense with poor visible porosity, some scattered sub-oolitic with scattered inter-oolite porosity and very scattered poor brown stain, few chips also have several small vugs, upon break chips show poor inter-xln staining, very weak to no cut, fair fleeting odor

~3250 LS, gray to cream, micro-xln, some fossiliferous, some lithographic, dense with poor visible porosity, no shows or odor

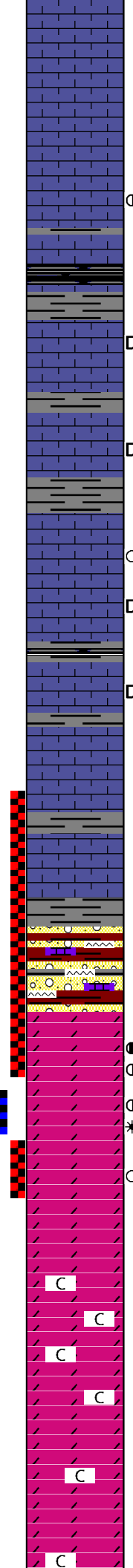
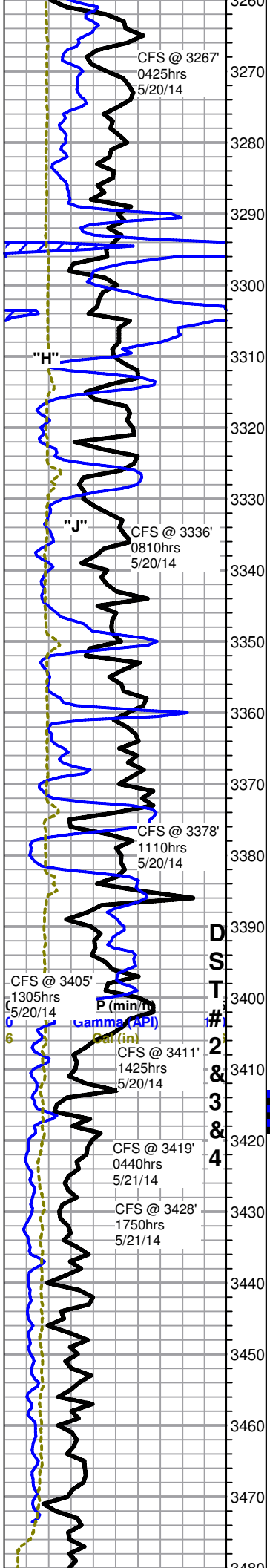
3267' 20" LS, cream to gray, micro-xln, mostly lithographic and dense with poor



** From Depths 3226-3240
Driller forgot to kick out geologist while drilling**

Survey @ 3240' = 1 deg

Mud-Co Mud chk
3240'
5/19/14
Vis: 57 Wt: 9.3
PV: 17 YP:13
WL: 9.6
Cake: 1/32
pH: 9.0



visible porosity, mostly barren, few chips with dead black stain in oomolds, one chip slightly vuggy with scattered black stain, slow streaming cut with bright white fluorescence, chalky, NSFO, poor odor

40" Mostly same as above with slightly less oomoldic, no shows or odor

LS, brown to cream, micro-crypto xln, mostly lithographic, hard and dense with no visible porosity

LS as above, also with some scattered cream, micro-xln, soft and chalky, slightly chalky sample, no shows or odor

LS as above, also with some (~20%) gray, micro-xln, oolitic and dense with poor visible porosity, few very scattered chips (~5%) with slightly oomoldic to vuggy edges and tarry, wet black stain in porosity, fair streaming cut with dull fluorescence, NSFO, poor odor

Muncie Creek 3296 (-1382)

LS, cream, micro-xln, mostly lithographic and dense with poor visible porosity, few very scattered chips sub-oomoldic with dead black scattered stain in some oomolds, trace black shale, poor odor

LS as above, trace black shale

3336' 30" LS, gray to cream, micro-crypto xln, mostly lithographic, hard and dense with poor to no visible porosity, some scattered soft and chalky in part, one chip sub-oolitic with slightly vuggy edge and very scattered poor light golden brown stain in porosity only, NSFO, poor odor

LS, cream to gray with some scattered light brown, micro-xln, mostly lithographic and dense with poor visible porosity, some scattered (~10-15%) with one to two small vugs to slightly vuggy edges with wet, tarry black to dead black to brown residual stain in porosity only, NSFO, poor odor

Stark Shale 3350 (-1436)

LS, cream to off-white, micro-xln, mostly lithographic with poor visible porosity, some scattered soft and chalky, few chips with very scattered dead black residual stain, no odor

BKC 3373 (-1459)

3378' 30" LS, cream to off-white, micro-xln, mostly lithographic and dense with poor visible porosity, some scattered soft and chalky, trace oolitic, poor visible porosity, barren, no shows or odor

Conglomerate 3388 (-1474)

Mixed LS, shales, and cherts, some scattered oolitic chert, heavy red wash, no shows or odor

Arbuckle 3402 (-1488)

3405' 30" Dolomite, white to off-white, micro-xln, mostly sub-sucrosic and dense with poor development and porosity, few very scattered (<5%) chips med-xln, with poor sub-rhombic development, friable, with very scattered brown stain, upon break VSSFO, also with conglomerate (~50/50), poor odor

3405' 45" As above, with slight increase in sub-sucrosic with poor to fair sub-rhombic development, mostly barren, some with very scattered very slight stain, upon break chips have SSFO, poor odor

3411' 30" Dolomite, white to off-white, some sub-sucrosic and dense with poor visible porosity, barren, also with some (~25%) sub-sucrosic, med-xln, with poor to fair sub-rhombic development, some scattered with several small vugs and very scattered spotty brown stain, upon break chips have slight to fair show free oil, few chips (~5%) sucrosic and rhombic with fair to good inter-xln porosity, several chips also slightly vuggy, when left under lamp for several minutes chips show saturated brown stain, fair odor

3411' 60" As above, with less sucrosic, few very scattered chips cream, micro-xln, sub-sucrosic with mostly saturated light golden brown stain, fair odor

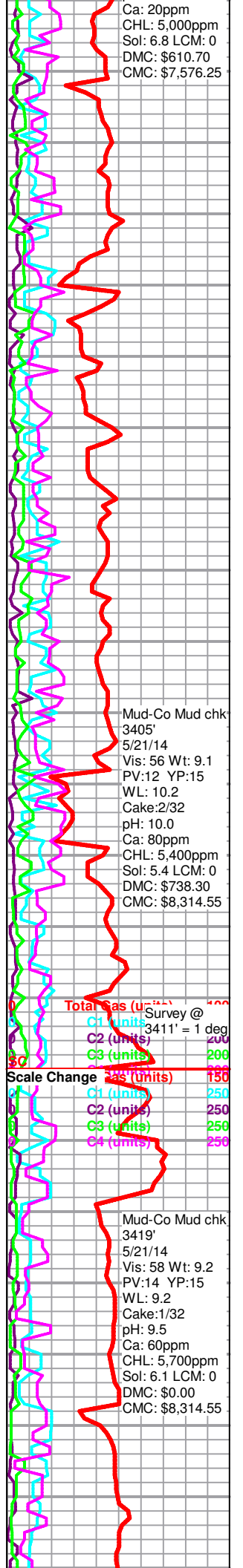
Reif Trust #1-23dst#2.jpg

3419' 30" Dolomite, white, micro-xln, mostly sub-sucrosic with poor visible porosity, some scattered (~15%) sub-sucrosic with poor to fair sub-rhombic development and scattered brown to black stain, some friable, upon break chips have fair to good show free oil and slight show gas bubbles, fair odor

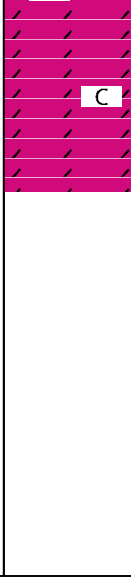
3419' 60" Dolomite, white, micro-xln, mostly sub-sucrosic and dense with poor visible porosity, some friable with very scattered brown to black stain, slight show free oil upon break, fair odor

Reif Trust #1-23dst#3.jpg

3428' 30" Dolomite, white, micro-med xln, mostly sub-sucrosic and dense with



3460
3490
3500
3510
3520
3530



3428' 60" Dolomite, white, micro-med xln, mostly sub-sucrosic and dense with poor visible porosity and scattered to very scattered black gilsonian stain with dull fluorescence, some scattered (~10%) with fair rhombic development and fairly friable, few chips with slight show black free oil droplets upon break and poor visible inter-xln porosity, poor odor

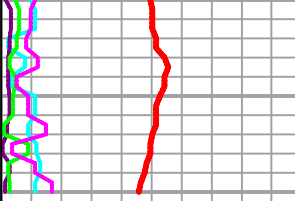
3428' 60" Mostly same as above, some chips with fair show free oil upon break (black to very light brown and opaque droplets), poor odor

Reif Trust #1-23dst#4.jpg

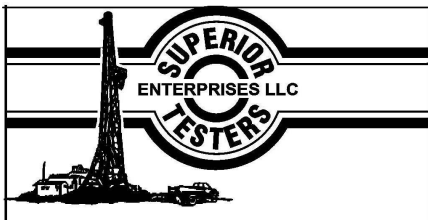
3440'-3460' Dolomite, white, micro-xln, mostly sub-sucrosic and dense with poor visible porosity, some scattered chips sucrosic with fair rhombic development, fairly friable, barren, chalky, no odor

3460'-3500' Dolomite as above, with slight increase in sucrosic, slightly chalky, barren, no odor

Rotary TD 3500' @ 0655hrs 5/22/14
Nabors Well Services Logging TD @ 3500'
Complete Logging Operations @ 1730hrs 5/22/14
Geologist Jeremy Schwartz off location @ 1800hrs 5/22/14



Mud-Co Mud chk
3500'
5/22/14
Vis: 68 Wt: 9.3
PV:20 YP:17
WL: 10.4
Cake:2/32
pH: 10.0
Ca: 60ppm
CHL: 6,900ppm
Sol: 6.7 LCM: 0
DMC: \$35.90
CMC: \$8,350.45



DRILL STEM TEST REPORT

Shelby Resources L.L.C
 2717 Canal Blvd Hays KS 67601
 ATTN: Jeremy Schwartz

23-18-14 Barton
Reif Trust #1-23
 Job Ticket: 19241 **DST#: 1**
 Test Start: 2014.05.19 @ 13:55:00

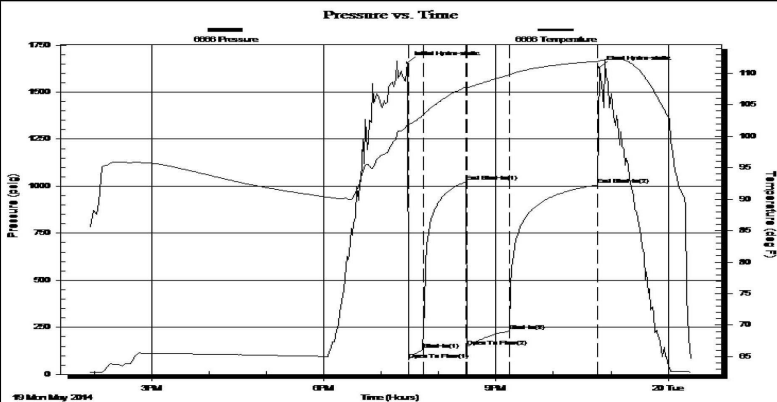
GENERAL INFORMATION:

Formation: **Lansing " A - F "**
 Deviated: No Whipstock: ft (KB)
 Test Type: Conventional Bottom Hole (Initial)
 Time Tool Opened: 19:29:00
 Tester: Jared Scheck
 Time Test Ended: 00:25:00
 Unit No: 3335-Great Bend-
 Interval: **3166.00 ft (KB) To 3240.00 ft (KB) (TVD)**
 Reference Elevations: 1914.00 ft (KB)
 Total Depth: 3240.00 ft (KB) (TVD)
 1901.00 ft (CF)
 Hole Diameter: 7.88 inches Hole Condition: Fair
 KB to GR/CF: 13.00 ft

Serial #: 6666

Press@RunDepth: 229.51 psig @ ft (KB) Capacity: 5000.00 psig
 Start Date: 2014.05.19 End Date: 2014.05.20 Last Calib.: 2014.05.20
 Start Time: 13:55:00 End Time: 00:25:00 Time On Btm: 2014.05.19 @ 19:27:30
 Time Off Btm: 2014.05.19 @ 22:48:00

TEST COMMENT: 1st Opening 15 Minutes-Weak blow built 3 inches from bottom of bucket in 15 minutes
 1st Shut-in 45 Minutes-No blow back
 2nd Opening 45 Minutes-Weak blow built 1 inch from bottom of bucket in 45 minutes
 2nd Shut-in 90 Minutes-No blow back



PRESSURE SUMMARY

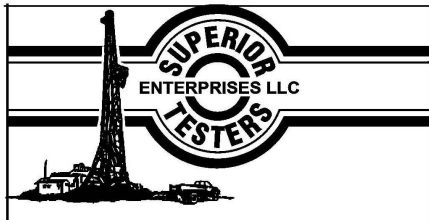
Time (Min.)	Pressure (psig)	Temp (deg F)	Annotation
0	1655.49	102.03	Initial Hydro-static
2	79.61	101.92	Open To Flow (1)
17	133.13	103.36	Shut-In(1)
62	1023.99	107.85	End Shut-In(1)
63	145.94	107.72	Open To Flow (2)
106	229.51	109.71	Shut-In(2)
199	1006.03	111.90	End Shut-In(2)
201	1630.11	112.04	Final Hydro-static

Recovery

Length (ft)	Description	Volume (bbl)
300.00	mud w ater 10 % mud 90%w ater	1.48
30.00	spot oil mud 1%oil 99%mud	0.15
0.00	chlorides 68,000	0.00

Gas Rates

Choke (inches)	Pressure (psig)	Gas Rate (Mcf/d)



DRILL STEM TEST REPORT

Shelby Resources L.L.C
 2717 Canal Blvd Hays KS 67601
 ATTN: Jeremy Schwartzs

23-18-14 Barton
Reif Trust #1-23
 Job Ticket: 19242 **DST#: 2**
 Test Start: 2014.05.20 @ 18:00:00

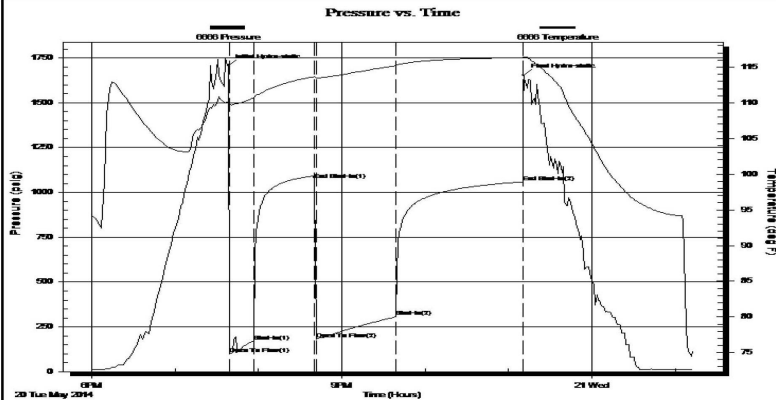
GENERAL INFORMATION:

Formation: **Arbuckle**
 Deviated: No Whipstock: ft (KB)
 Time Tool Opened: 19:39:30
 Time Test Ended: 01:12:30
 Interval: **3371.00 ft (KB) To 3411.00 ft (KB) (TVD)**
 Total Depth: 3411.00 ft (KB) (TVD)
 Hole Diameter: 7.88 inches Hole Condition: Fair
 Test Type: Conventional Bottom Hole (Initial)
 Tester: Jared Scheck
 Unit No: 3335-Great Bend-25
 Reference Elevations: 1914.00 ft (KB)
 1901.00 ft (CF)
 KB to GR/CF: 13.00 ft

Serial #: 6666

Press@RunDepth: 306.44 psig @ ft (KB) Capacity: 5000.00 psig
 Start Date: 2014.05.20 End Date: 2014.05.21 Last Calib.: 2014.05.21
 Start Time: 18:00:00 End Time: 01:12:30 Time On Btm: 2014.05.20 @ 19:38:30
 Time Off Btm: 2014.05.20 @ 23:11:00

TEST COMMENT: 1st Opening 15 Minutes-Strong blow built bottom of bucket in 9 1/2 minutes
 1st Shut-in 45 Minutes-No blow back
 2nd Opening 60 Minutes-Strong blow built bottom of bucket in 10 1/2 minutes
 2nd Shut-in 90 Minutes-No blow back



PRESSURE SUMMARY

Time (Min.)	Pressure (psig)	Temp (deg F)	Annotation
0	1708.96	110.19	Initial Hydro-static
1	98.38	109.75	Open To Flow (1)
18	168.11	110.69	Shut-In(1)
62	1069.38	113.67	End Shut-In(1)
63	181.93	113.49	Open To Flow (2)
121	306.44	115.20	Shut-In(2)
212	1058.99	116.31	End Shut-In(2)
213	1653.32	116.44	Final Hydro-static

Recovery

Length (ft)	Description	Volume (bbl)
330.00	gas oil 10%gas 90%oil	1.62
390.00	gas oil 10%gas 90%oil	5.47
0.00	gravity oil 44	0.00

Gas Rates

Choke (inches)	Pressure (psig)	Gas Rate (Mcf/d)



DRILL STEM TEST REPORT

Shelby Resources L.L.C
 2717 Canal Blvd Hays KS 67601
 ATTN: Jeremy Schwartz

23-18-14 Barton
Reif Trust #1-23
 Job Ticket: 19243 **DST#: 3**
 Test Start: 2014.05.21 @ 07:25:00

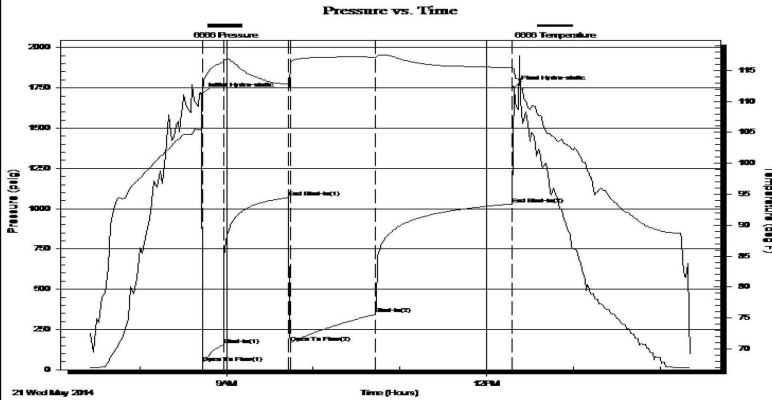
GENERAL INFORMATION:

Formation: **Arbuckle**
 Deviated: No Whipstock: ft (KB)
 Time Tool Opened: 08:43:30
 Time Test Ended: 14:21:00
 Interval: **3413.00 ft (KB) To 3419.00 ft (KB) (TVD)**
 Total Depth: 3419.00 ft (KB) (TVD)
 Hole Diameter: 7.88 inches Hole Condition: Fair
 Test Type: Conventional Bottom Hole (Initial)
 Tester: Jared Scheck
 Unit No: 3335-Great Bend -25
 Reference Elevations: 1914.00 ft (KB)
 1901.00 ft (CF)
 KB to GR/CF: 13.00 ft

Serial #: 6666

Press@RunDepth: 345.14 psig @ ft (KB) Capacity: 5000.00 psig
 Start Date: 2014.05.21 End Date: 2014.05.21 Last Calib.: 2014.05.21
 Start Time: 07:25:00 End Time: 14:21:00 Time On Btm: 2014.05.21 @ 08:42:30
 Time Off Btm: 2014.05.21 @ 12:18:30

TEST COMMENT: 1st Opening 15 Minutes-Strong blow built bottom of bucket in 5 minutes
 1st Shut-in 45 Minutes-1 inch blow back
 2nd Opening 60 Minutes-Strong blow built bottom of bucket in 6 1/2 minutes
 2nd Shut-in 90 Minutes-2 inch blow back



PRESSURE SUMMARY

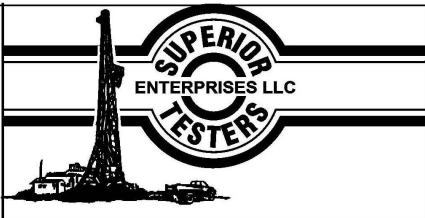
Time (Min.)	Pressure (psig)	Temp (deg F)	Annotation
0	1713.03	105.45	Initial Hydro-static
1	42.30	111.14	Open To Flow (1)
16	155.09	116.34	Shut-In(1)
61	1068.75	112.77	End Shut-In(1)
62	168.62	116.39	Open To Flow (2)
121	345.14	117.17	Shut-In(2)
215	1028.92	115.50	End Shut-In(2)
216	1755.73	115.19	Final Hydro-static

Recovery

Length (ft)	Description	Volume (bbl)
900.00	gas oil 15%gas 85%oil	9.62
0.00	gravity oil 45	0.00

Gas Rates

Choke (inches)	Pressure (psig)	Gas Rate (Mcf/d)



DRILL STEM TEST REPORT

Shelby Resources L.L.C
 2717 Canal Blvd Hays KS 67601
 ATTN: Jeremy Schwartz

23-18-14 Barton
Reif Trust #1-23
 Job Ticket: 19244 **DST#: 4**
 Test Start: 2014.05.21 @ 21:00:00

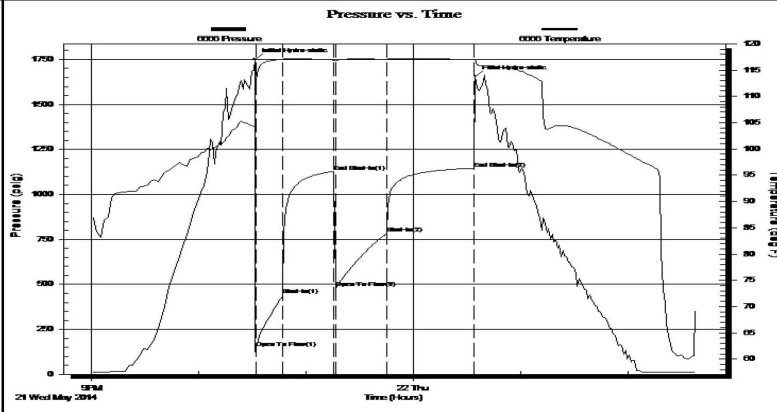
GENERAL INFORMATION:

Formation: **Arbuckle**
 Deviated: No Whipstock: ft (KB)
 Time Tool Opened: 22:32:00
 Time Test Ended: 02:38:00
 Test Type: Conventional Bottom Hole (Initial)
 Tester: Jared Scheck
 Unit No: 3335-Great Bend -25
 Interval: **3420.00 ft (KB) To 3428.00 ft (KB) (TVD)**
 Total Depth: 3428.00 ft (KB) (TVD)
 Reference Elevations: 1914.00 ft (KB)
 1901.00 ft (CF)
 Hole Diameter: 7.88 inches Hole Condition: Fair
 KB to GR/CF: 13.00 ft

Serial #: 6666

Press@RunDepth: 783.11 psig @ ft (KB) Capacity: 5000.00 psig
 Start Date: 2014.05.21 End Date: 2014.05.22 Last Calib.: 2014.05.22
 Start Time: 21:00:00 End Time: 02:38:00 Time On Btm: 2014.05.21 @ 22:31:00
 Time Off Btm: 2014.05.22 @ 00:34:30

TEST COMMENT: 1st Opening 15 Minutes-Strong blow built bottom of bucket in 1 1/2 minutes
 1st Shut-in 30 Minutes-No blow back
 2nd Opening 30 Minutes-Strong blow built bottom of bucket in 2 minutes
 2nd Shut-in 45 Minutes-No blow back



PRESSURE SUMMARY			
Time (Min.)	Pressure (psig)	Temp (deg F)	Annotation
0	1751.39	104.28	Initial Hydro-static
1	144.95	113.06	Open To Flow (1)
16	439.17	117.01	Shut-In(1)
45	1125.86	116.92	End Shut-In(1)
46	478.68	116.75	Open To Flow (2)
74	783.11	117.05	Shut-In(2)
123	1145.08	117.03	End Shut-In(2)
124	1655.47	116.99	Final Hydro-static

Recovery		
Length (ft)	Description	Volume (bbl)
1680.00	water	20.56
0.00	chlorides 23,0000	0.00

Gas Rates			
	Choke (inches)	Pressure (psig)	Gas Rate (Mcf/d)