

# ADVANTAGE ELEVATIONS

OIL FIELD SURVEYORS

BOX 8604 - PRATT, KS 67124  
(620) 672-6491

616141  
INVOICE NO.

N-10 EXPLORATION LLC  
OPERATOR

3  
NO.

MEDICINE RIVER RANCH A  
FARM

Barber COUNTY      21 S      34s T      11w R

W/2 SE NE  
LOCATION

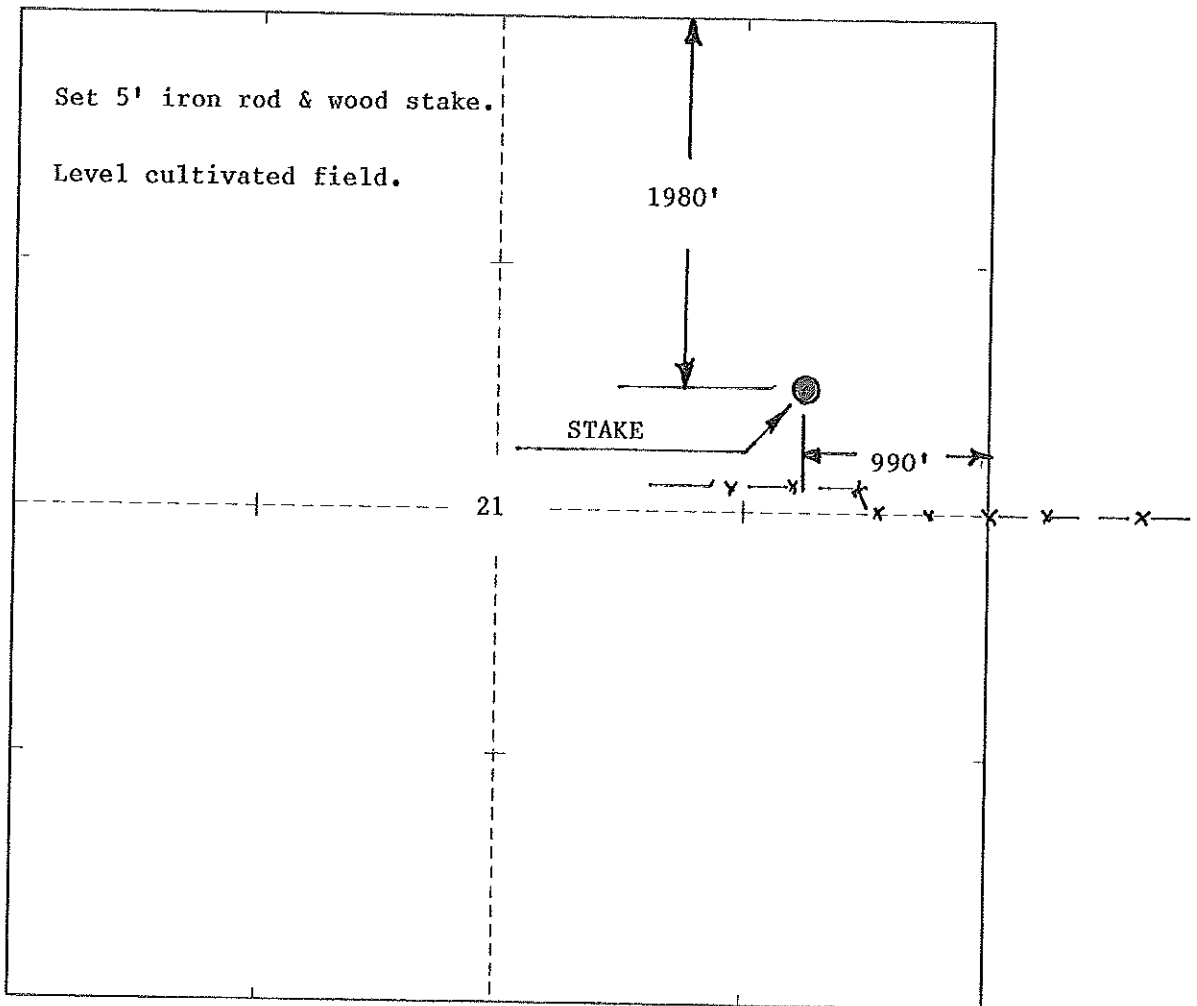
ELEVATION: 1328' GR



N-10 EXPLORATION LLC  
PO BOX 195  
Attica, KS 67009-0195

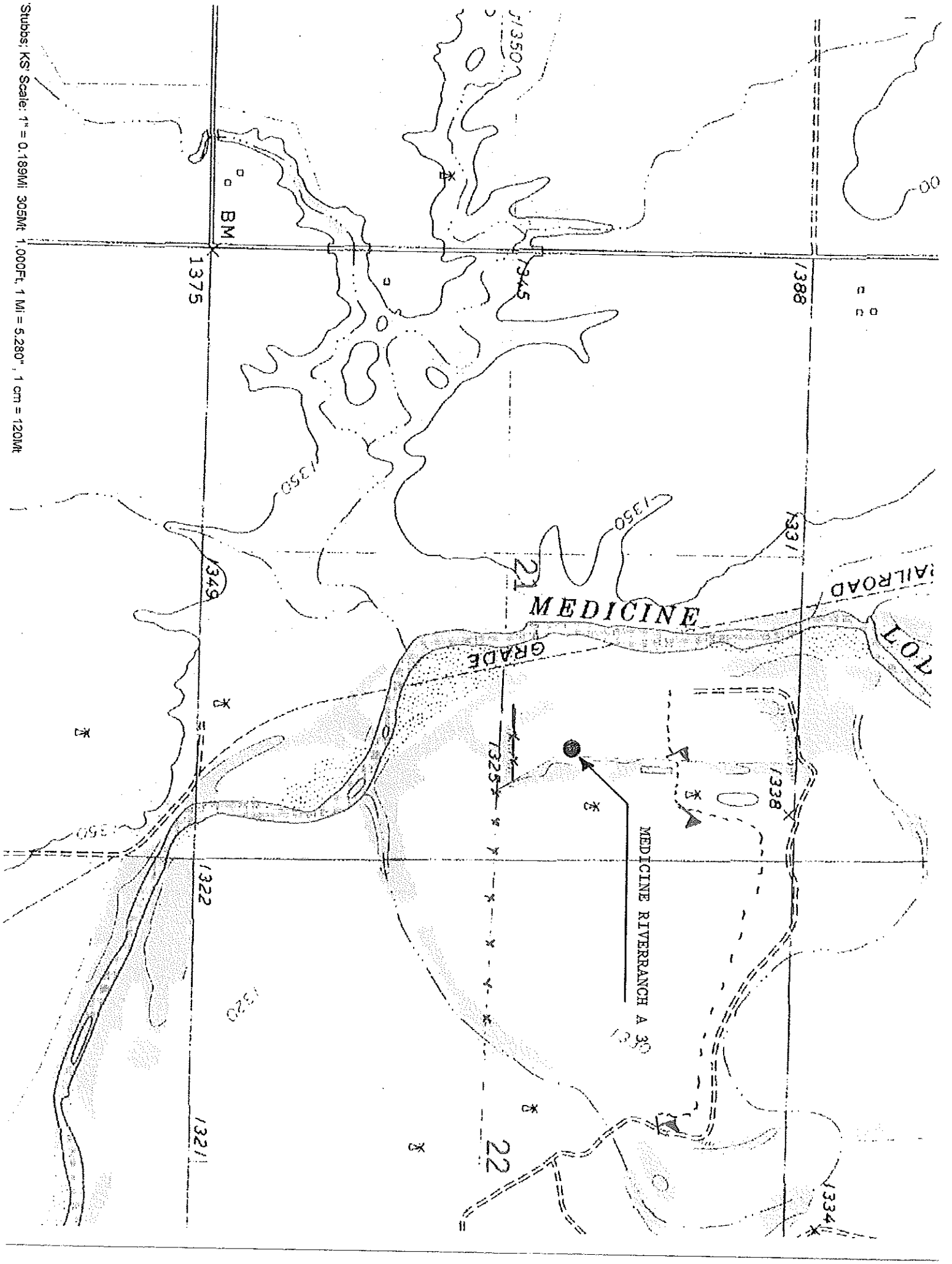
AUTHORIZED BY: Randy Newberry

SCALE: 1" = 1000'



DATE STAKED: 6/18/14

Subbs: KS' Scale: 1" = 0.189MI 305M/1.000Ft. 1 MI = 5.280", 1 cm = 120M/



RAILROAD

MEDICINE

GRADE

MEDICINE RIVER RANCH A 3C

BM

1375

1388

1345

1349

1331

1322

1338

1320

1325

1321

1334

22

x

x

x

x

x

x

x

00

00

00

00

00

00

00

00

00

00

00

00

00

00

00

00

00

00

00

00

00

00

00

00

00

00

00

00

00

00

00

00

00

00