

GEOLOGIC REPORT

DAVID J. GOLDAK

WICHITA, KANSAS
Scale 1:240 (5"=100') Imperial
Measured Depth Log

Well Name: Schroder #3-14
Location: Section 14 - T17S - R33W
License Number: API: 15-171-21060
Spud Date: 06 / 30 / 2014
Surface Coordinates: 1555' FSL and 545' FWL
SE - SW - NW - SW
Region: Scott Co., KS
Drilling Completed: 07 / 07 / 2014
Bottom Hole Coordinates:
Ground Elevation (ft): 2986' K.B. Elevation (ft): 2997'
Logged Interval (ft): 3700' To: 4730' Total Depth (ft): 4730'
Formation: Mississippian - St Louis
Type of Drilling Fluid: Chemical - Mud-Co

Printed by MUD.LOG from WellSight Systems 1-800-447-1534 www.WellSight.com

OPERATOR

Company: Stelbar Oil Corporation
Address: 1625 N. Waterfront Pkwy., Suite 200
Wichita, Kansas 67206-6602

GEOLOGIST

Name: David J. Goldak
Company: D. J. GOLDAK, INC.
Address: 155 N. Market, Suite 710
Wichita, Kansas 67202

General Info

CONTRACTOR: Sterling Drilling, Rig #2

BIT RECORD:

No.	Size	Make	Jets	Out	Feet	Hours
1	12-1/4	JZ-HAOTC	3-14s	312	312	2.25
2	7-7/8	JZ-HAIP	?	411	99	0.75
3	7-7/8	Ultrerra-U516M	5-15s	4730	4319	49.25

SURVEYS: 312'-0.75, 4228'-0.75, 4730'-1.75

GENERAL DRILLING & PUMP INFORMATION:

Drilling with 10,000-16,000 lbs on bit and 80-90 RPM.
Drilling with 7 stands of collars (6.25"x2.25"): 429.27'
Pumping 58-64 S/M; 8.9-9.9 B/M; 800-1000 psi at standpipe.

Daily Status

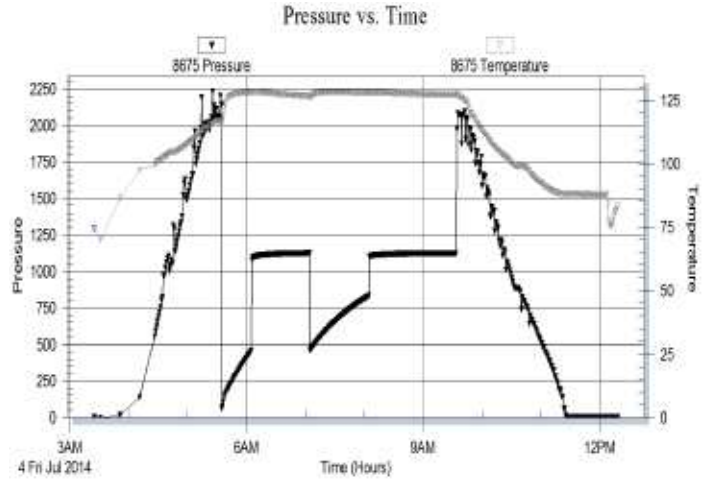
06/30/14 - Spud at 8:45 PM; Set 8-5/8" csg at 307'
 07/01/14 - 312' WOC; DP at 1:15 PM; Bit trip at 411'
 07/02/14 - 2,126' Drilling; Displace mud @ 3,400'
 07/03/14 - 3,751' Drilling
 07/04/14 - 4,228' On bottom with DST #1
 07/05/14 - 4,404' TOH with DST #2
 07/06/14 - 4,626' On bottom with DST #3; RTD 4,730' @ 5:45 PM; Log well
 07/07/14 - 4,730' On bottom with DST #4 (Straddle)

DST #1: 4,206' - 4,228' (LKC "K")
 30" - 60" - 60" - 90"

IF: Good blow building to BOB in 3-1/2 minutes
ISI: No blow back
FF: Good blow building to BOB in 5-1/2 minutes
FSI: No blow back

RECOVERY: 1790' Total Fluid, consisting of:
 787' MCW with oil scum (62% W, 38% M)
 1003' W (100% W); Chlorides: 45,000 ppm
Sampler: 50 ml O, 100 ml M & 2850 ml W @ 100 psi

SIP: 1124-1123; FP: 59-456, 463-832; HP: 2136-2083;
BHT: 128

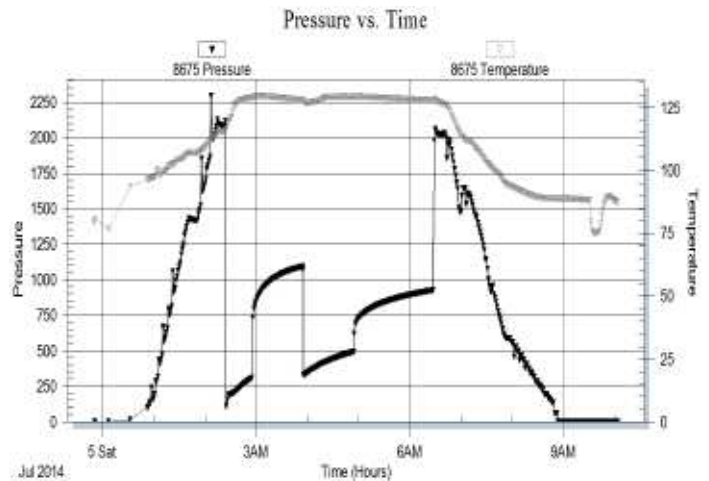


DST #2: 4,352' - 4,404' (Marmaton)
 30" - 60" - 60" - 90"

IF: Good blow building to BOB in 3 minutes
ISI: Blow back building to BOB in 40 minutes
FF: Good blow building to BOB in 6 minutes
FSI: Blow back building to BOB in 30 minutes

RECOVERY: 756' GIP & 1255' Total Fluid, consisting of:
 630' GCO (25% G, 75% O); Gravity: 31 API
 625' MCGO (18% G, 68% O, 14% M)
Sampler: 1500 ml Gas & 1500 ml Oil @ 125 psi

SIP: 1094-927; FP: 108-309, 331-494; HP: 2115-2051;
BHT: 129

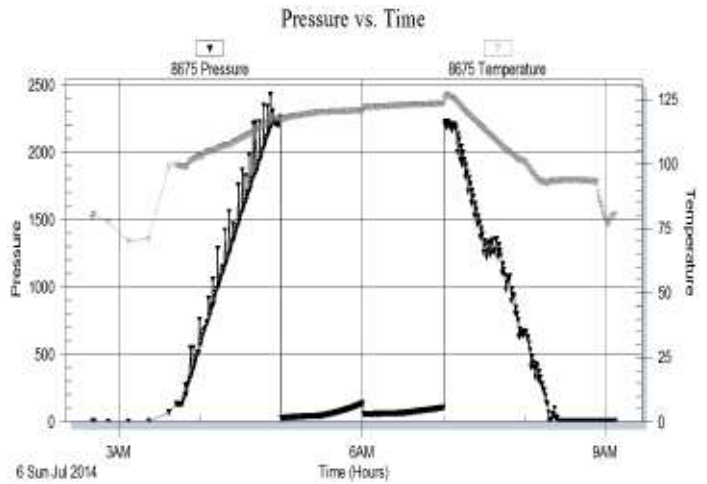


DST #3: 4,560' - 4,626' (Johnson & Morrow)
 30" - 30" - 30" - 30"

IF: Weak blow building to 1-3/4 inches
ISI: No blow back
FF: 1/4 inch blow, died in 15 minutes
FSI: No blow back

RECOVERY: 65' Total Fluid, consisting of:
 65' Mud with oil scum (100% M)
Sampler: 500 ml Mud w/ oil scum @ 60 psi

SIP: 137-106; FP: 26-44, 55-64; HP: 2255-2203; BHT: 123

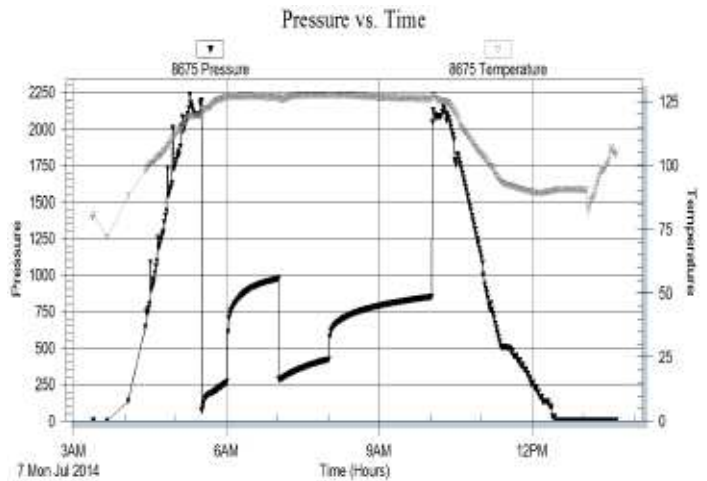


DST #4: 4,350' - 4,400' (Marmaton)
 (Straddle Test) 30" - 60" - 60" - 120"


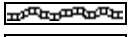
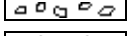
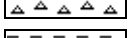


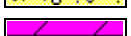

IF: Good blow building to BOB in 5 minutes
ISI: Blow back building to 7-1/2 inches
FF: Good blow building to BOB in 8 minutes
FSI: Blow back building to 3 inches







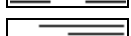

RECOVERY: 834' GIP & 1111' Total Fluid, consisting of:
 612' GCO (35% G, 65% O); Gravity: 31 API
 499' MCGO (25% G, 60% O, 15% M)
Sampler: 1000 ml Gas & 2000 ml Oil @ 250 psi

SIP: 973-851; FP: 71-264, 280-421; HP: 2193-2128;
BHT: 127

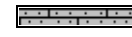


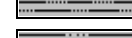
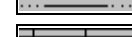



ROCK TYPES

-  Anhy
-  Bent
-  Brec
-  Cht
-  Clyst
-  Coal
-  Congl
-  Dol

-  Gyp
-  Igne
-  Lmst
-  Meta
-  Mrlst
-  Salt
-  Shale
-  Shcol

-  Shgy
-  Sltst
-  Ss
-  Till
-  Carb sh
-  Dol
-  Dtd
-  Gry sh

-  Sandylms
-  Shale
-  Sltstn
-  Shlyslts
-  Sltysch
-  Lms

ACCESSORIES

MINERAL

- Anhy
- Arggrn
- Arg
- Bent
- Bit
- Brecfrag
- Calc
- Carb
- Chtdk
- Chtlt
- Dol
- Feldspar
- Ferrpel
- Ferr
- Glau
- Gyp
- Hvymin
- Kaol
- Marl
- Minxl
- Nodule
- Phos
- Pyr

- Salt
- Sandy
- Silt
- Sil
- Sulphur
- Tuff
- Chlorite
- Dol
- Sand
- Sltly

FOSSIL

- Algae
- Amph
- Belm
- Bioclst
- Brach
- Bryozoa
- Cephal
- Coral
- Crin
- Echin
- Fish
- Foram

- Fossil
- Gastro
- Oolite
- Ostra
- Pelec
- Pellet
- Pisolite
- Plant
- Strom
- Fuss
- Oomold

STRINGER

- Anhy
- Arg
- Bent
- Coal
- Dol
- Gyp
- Ls
- Mrst
- Sltstrg
- Ssstrg
- Carbsh

- Clystn
- Dol
- Grysh
- Gryslt
- Lms
- Sandylms
- Sh
- Sltstn

TEXTURE

- Boundst
- Chalky
- Cryxln
- Earthy
- Finexln
- Grainst
- Lithogr
- Microxln
- Mudst
- Packst
- Wackest

OTHER SYMBOLS

POROSITY TYPE

- Earthy
- Fenest
- Fracture
- Inter
- Moldic
- Organic
- Pinpoint
- Vuggy

SORTING

- Well
- Moderate
- Poor

ROUNDING

- Rounded
- Subrnd
- Subang
- Angular

OIL SHOWS

- Even
- Spotted
- Ques
- Dead
- Gas show

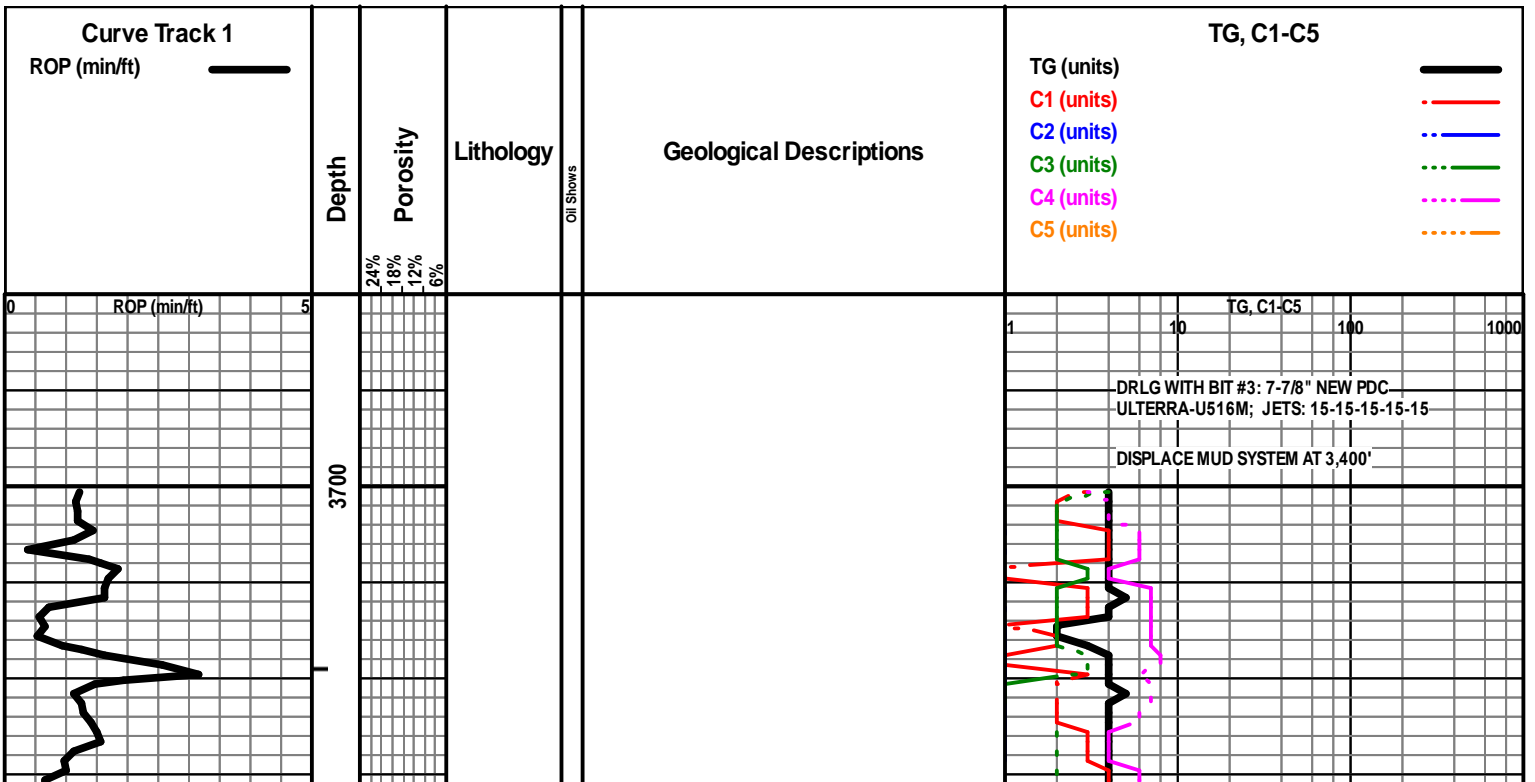
INTERVALS

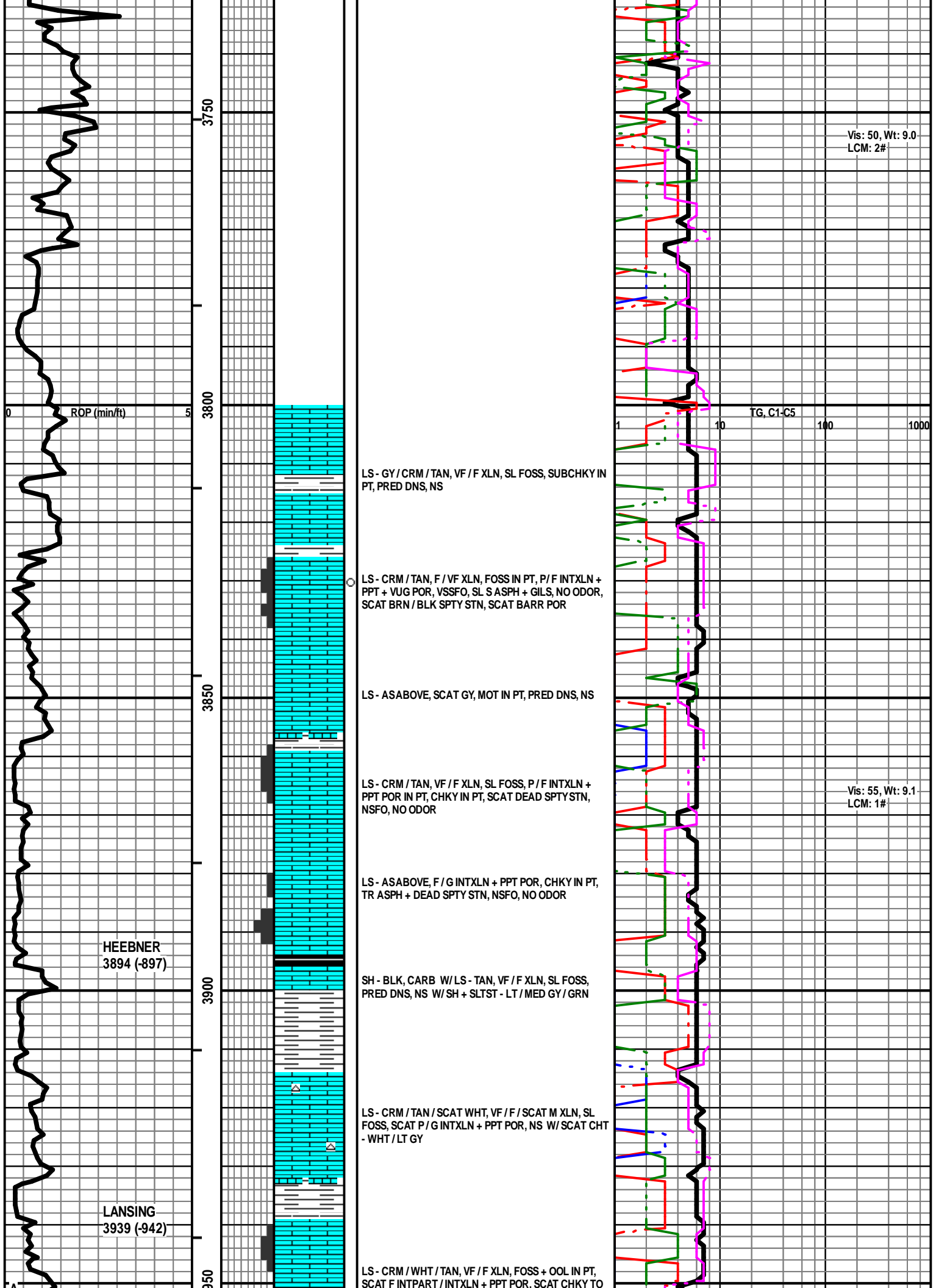
- Core
- Dst

- Dst_1_t
- Dst_1_b
- Dst

EVENTS

- Rft
- Sidewall
- Conn





Vis: 50, Wt: 9.0
LCM: 2#

TG, C1-C5
1 10 100 1000

LS - GY / CRM / TAN, VF / F XLN, SL FOSS, SUBCHKY IN PT, PRED DNS, NS

LS - CRM / TAN, F / VF XLN, FOSS IN PT, P / F INTXLN + PPT + VUG POR, VSSFO, SL S ASPH + GILS, NO ODOR, SCAT BRN / BLK SPTY STN, SCAT BARR POR

LS - ASABOVE, SCAT GY, MOT IN PT, PRED DNS, NS

LS - CRM / TAN, VF / F XLN, SL FOSS, P / F INTXLN + PPT POR IN PT, CHKY IN PT, SCAT DEAD SPTY STN, NSFO, NO ODOR

Vis: 55, Wt: 9.1
LCM: 1#

LS - ASABOVE, F / G INTXLN + PPT POR, CHKY IN PT, TR ASPH + DEAD SPTY STN, NSFO, NO ODOR

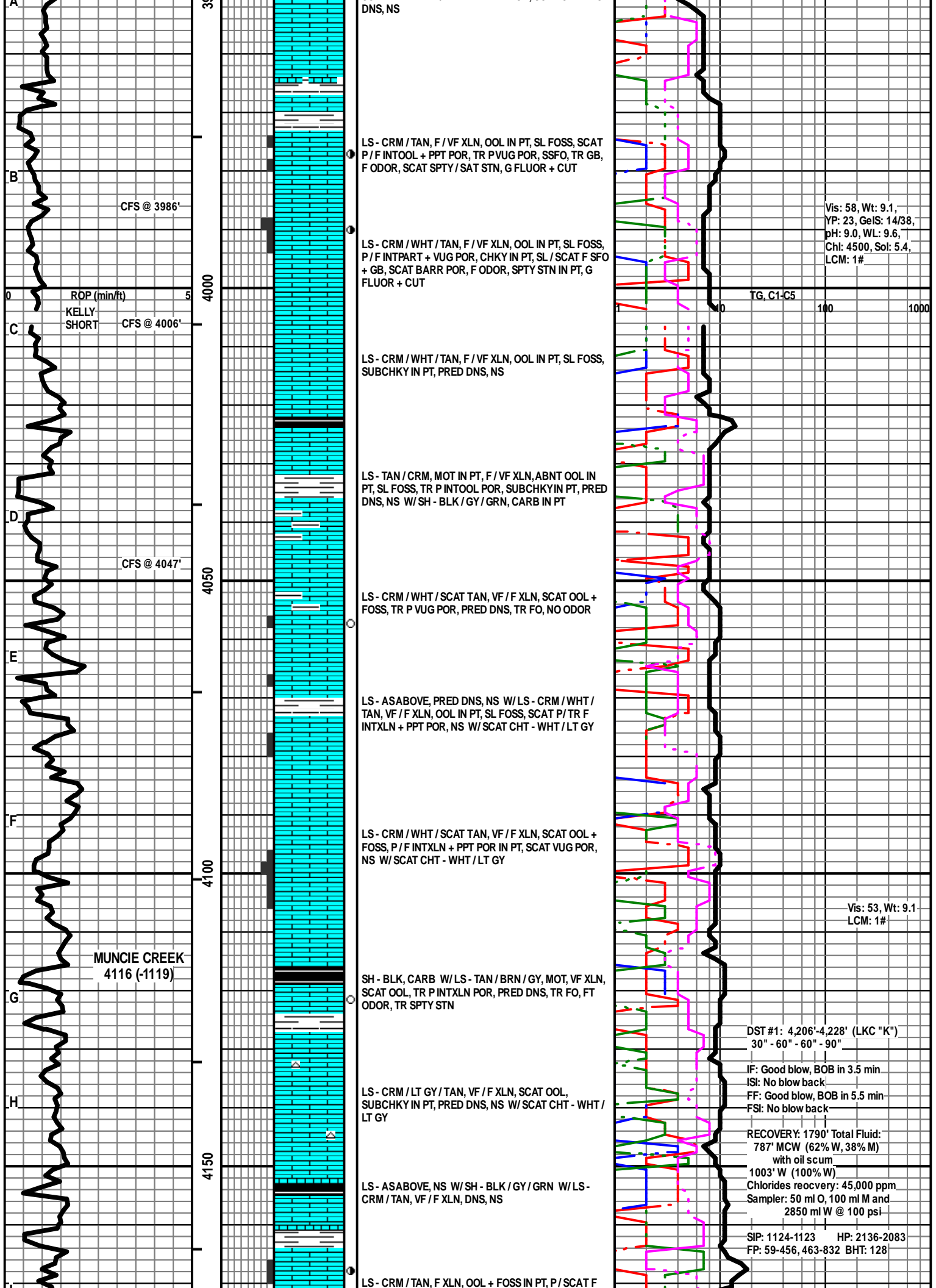
HEEBNER
3894 (-897)

SH - BLK, CARB W / LS - TAN, VF / F XLN, SL FOSS, PRED DNS, NS W / SH + SLTST - LT / MED GY / GRN

LS - CRM / TAN / SCAT WHT, VF / F / SCAT M XLN, SL FOSS, SCAT P / G INTXLN + PPT POR, NS W / SCAT CHT - WHT / LT GY

LANSING
3939 (-942)

LS - CRM / WHT / TAN, VF / F XLN, FOSS + OOL IN PT, SCAT F INTPART / INTXLN + PPT POR. SCAT CHKY TO



Vis: 58, Wt: 9.1,
 YP: 23, GeIS: 14/38,
 pH: 9.0, WL: 9.6,
 Chl: 4500, Sol: 5.4,
 LCM: 1#

TG, C1-C5

ROP (min/ft)
 KELLY
 SHORT

MUNCIE CREEK
 4116 (-1119)

Vis: 53, Wt: 9.1
 LCM: 1#

DST #1: 4,206'-4,228' (LKC "K")
 30" - 60" - 60" - 90"

IF: Good blow, BOB in 3.5 min.
 IS: No blow back
 FF: Good blow, BOB in 5.5 min
 FS: No blow back

RECOVERY: 1790' Total Fluid:
 787' MCW (62% W, 38% M)
 with oil scum
 1003' W (100% W)
 Chlorides recovery: 45,000 ppm
 Sampler: 50 ml O, 100 ml M and
 2850 ml W @ 100 psi

SIP: 1124-1123 HP: 2136-2083
 FP: 59-456, 463-832 BHT: 128

LS - CRM / TAN, F / VF XLN, OOL IN PT, SL FOSS, SCAT P / F INTOOL + PPT POR, TR PVUG POR, SSFO, TR GB, F ODOR, SCAT SPTY / SAT STN, G FLUOR + CUT

LS - CRM / WHT / TAN, F / VF XLN, OOL IN PT, SL FOSS, P / F INTPART + VUG POR, CHKY IN PT, SL / SCAT F SF0 + GB, SCAT BARR POR, F ODOR, SPTY STN IN PT, G FLUOR + CUT

LS - CRM / WHT / TAN, F / VF XLN, OOL IN PT, SL FOSS, SUBCHKY IN PT, PRED DNS, NS

LS - TAN / CRM, MOT IN PT, F / VF XLN, ABNT OOL IN PT, SL FOSS, TR P INTOOL POR, SUBCHKY IN PT, PRED DNS, NS W / SH - BLK / GY / GRN, CARB IN PT

LS - CRM / WHT / SCAT TAN, VF / F XLN, SCAT OOL + FOSS, TR P VUG POR, PRED DNS, TR FO, NO ODOR

LS - ASABOVE, PRED DNS, NS W / LS - CRM / WHT / TAN, VF / F XLN, OOL IN PT, SL FOSS, SCAT P / TR F INTXLN + PPT POR, NS W / SCAT CHT - WHT / LT GY

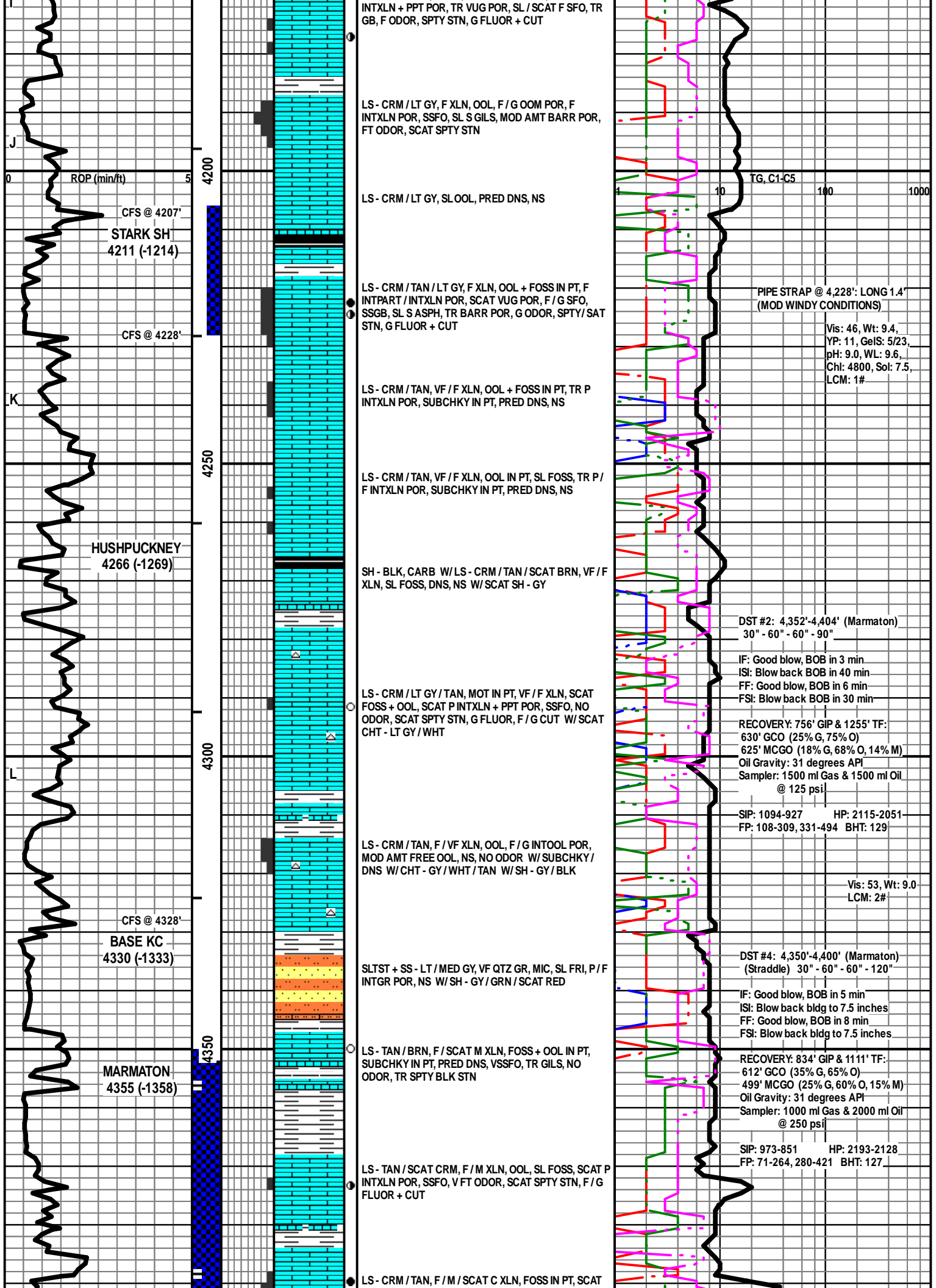
LS - CRM / WHT / SCAT TAN, VF / F XLN, SCAT OOL + FOSS, P / F INTXLN + PPT POR IN PT, SCAT VUG POR, NS W / SCAT CHT - WHT / LT GY

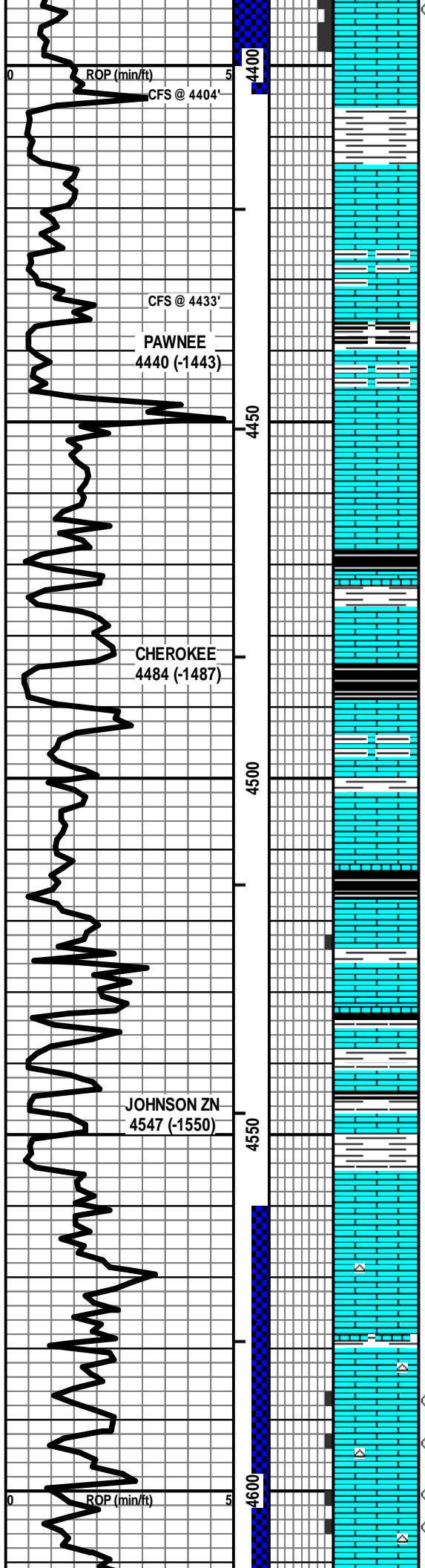
SH - BLK, CARB W / LS - TAN / BRN / GY, MOT, VF XLN, SCAT OOL, TR P INTXLN POR, PRED DNS, TR FO, FT ODOR, TR SPTY STN

LS - CRM / LT GY / TAN, VF / F XLN, SCAT OOL, SUBCHKY IN PT, PRED DNS, NS W / SCAT CHT - WHT / LT GY

LS - ASABOVE, NS W / SH - BLK / GY / GRN W / LS - CRM / TAN, VF / F XLN, DNS, NS

LS - CRM / TAN, F XLN, OOL + FOSS IN PT, P / SCAT F





OOL, P / G INTXLN + VUG POR, SCAT P / F FOSSMOLD
 POR, SUBCHKY IN PT, FSFO, NO ODOR, SPTY / SAT
 STN, F S GILS IN SUBCHKY MAT, F / G FLUOR + CUT

ABNT SH - GY / GRN, SLTY IN PT W / LS - CRM / TAN /
 SCAT BRN, F XLN, SCAT FOSS, PRED DNS, NS

LS - CRM / TAN / SCAT BRN, F / VF XLN, SCAT M REXLN
 CALC, TR FOSS, SUBCHKY IN PT, PRED DNS, NS W /
 SH - GY / GRN

LS - CRM / TAN / SCAT GY, VF / F XLN, TR FOSS,
 SUBCHKY IN PT, PRED DNS, NS W / SH - GY / BLK,
 CARB IN PT

LS - CRM / TAN, VF / F XLN, TR FOSS, SUBCHKY IN PT,
 PRED DNS, NS W / CHT - GY / WHT

SH - BLK / GY W / LS - TAN / BRN / CRM, VF / F XLN,
 SCAT M REXLN CALC, FOSS IN PT, CHKY IN PT / DNS,
 NS

LS - CRM / TAN / BRN, F / VF XLN, OOL IN PT, SL FOSS,
 PRED DNS, NS W / SH - BLK + CARB / GY

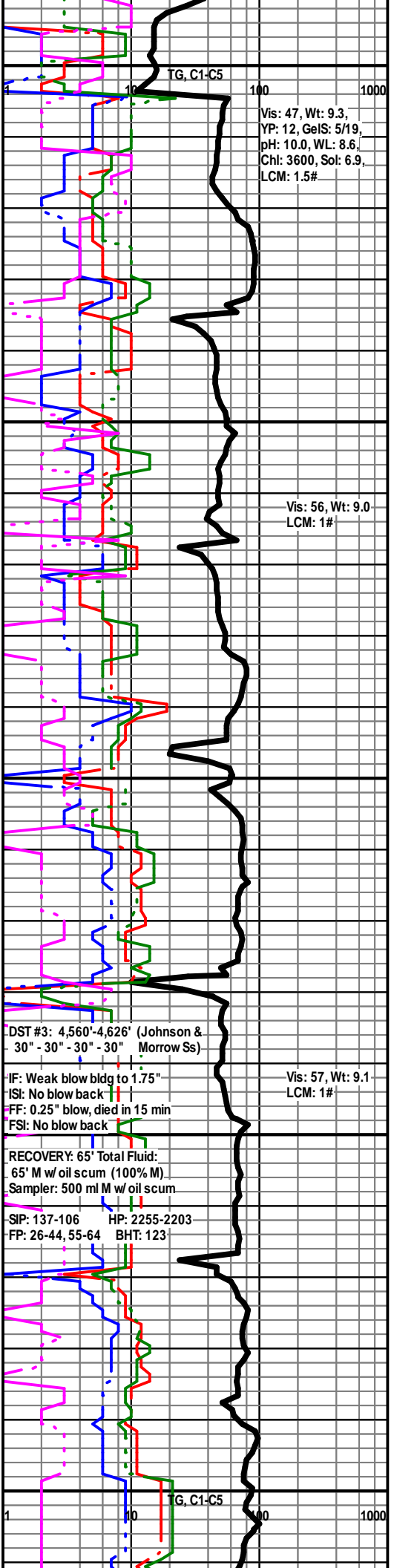
LS - CRM / GY / TAN, VF / F XLN, FOSS IN PT, TR P
 INTXLN POR, PRED DNS / SUBCHKY IN PT, TR FO,
 PRED NS, NO ODOR W / SH - BLK, CARB

LS - CRM / TAN, VF / F XLN, SCAT OOL, TR FOSS, SCAT
 CHKY, PRED DNS, NS W / SH - GY / BLK

LS - CRM / TAN / BRN, VF / M XLN, OOL IN PT, SL FOSS,
 PRED DNS, NS W / SH - GY / BLK

LS - CRM / TAN / SCAT BRN, VF / F XLN, SCAT OOL +
 FOSS, TR P INTXLN POR, PRED DNS, TR FO, PRED NS,
 NO ODOR W / SCAT CHT - TAN / GY

LS - CRM / TAN / WHT, F / VF XLN, FOSS IN PT, SCAT
 OOL, SCAT P / F INTXLN + PPT POR, TR VUG POR, SL / F
 SFO, F ODOR, SCAT SPTY STN, F / G FLUOR + CUT W /
 SCAT CHT - TAN / GY / WHT



Vis: 47, Wt: 9.3,
 YP: 12, GeS: 5/19,
 pH: 10.0, WL: 8.6,
 Chl: 3600, Sol: 6.9,
 LCM: 1.5#

Vis: 56, Wt: 9.0
 LCM: 1#

DST #3: 4,560'-4,626' (Johnson &
 30" - 30" - 30" - 30" Morrow Ss)

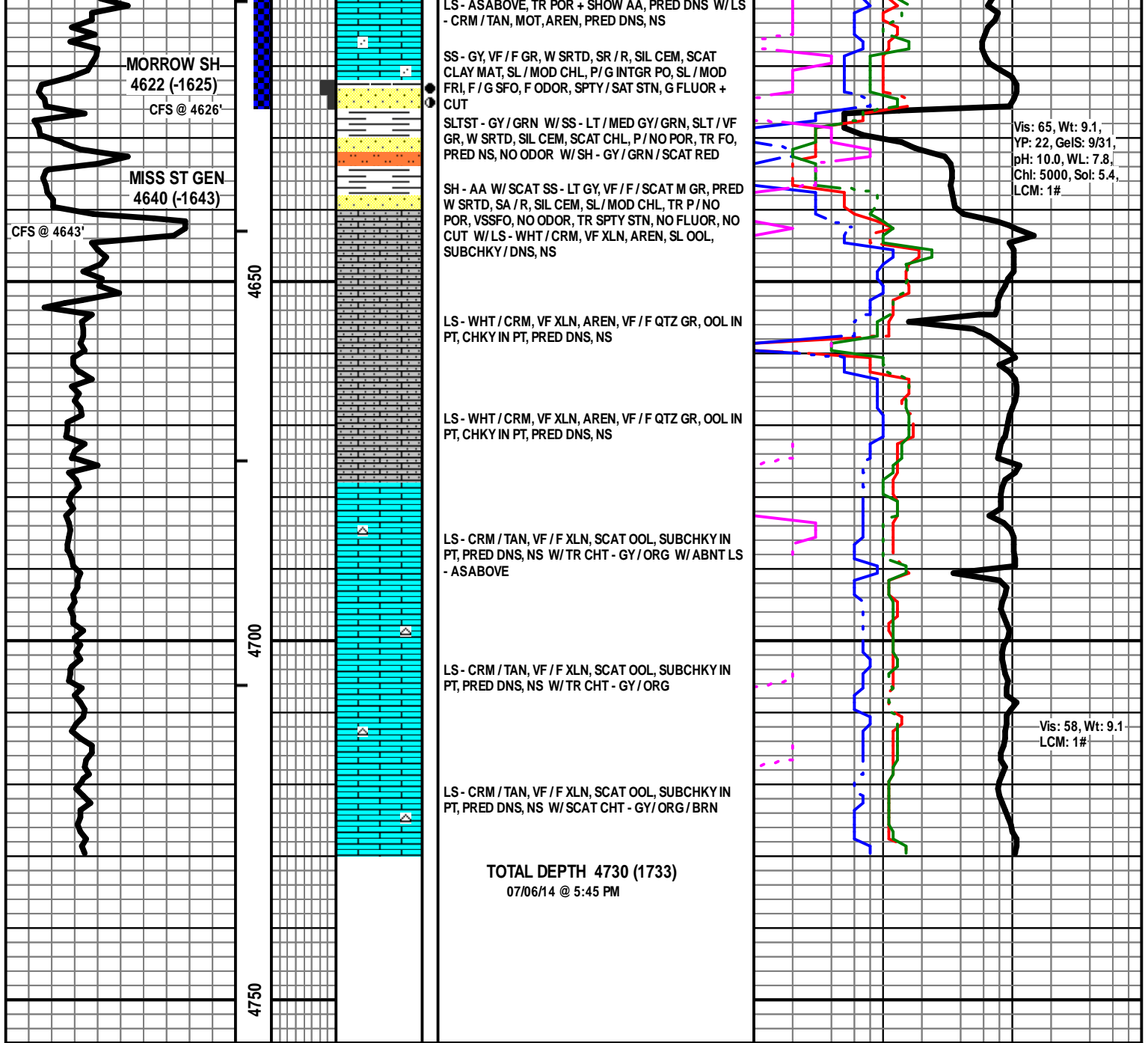
IF: Weak blow bldg to 1.75"
 IS: No blow back
 FF: 0.25" blow, died in 15 min
 FSI: No blow back

Vis: 57, Wt: 9.1
 LCM: 1#

RECOVERY: 65' Total Fluid:
 65' M w / oil scum (100% M)
 Sampler: 500 ml M w / oil scum

SIP: 137-106 HP: 2255-2203
 FP: 26-44, 55-64 BHT: 123

TG, C1-C5



LS - AS ABOVE, TR POR + SHOW AA, PRED DNS W/LS - CRM / TAN, MOT, AREN, PRED DNS, NS

SS - GY, VF / F GR, W SRTD, SR / R, SIL CEM, SCAT CLAY MAT, SL / MOD CHL, P / G INTGR PO, SL / MOD FRI, F / G SFO, F ODOR, SPTY / SAT STN, G FLUOR + CUT

SLTST - GY / GRN W/SS - LT / MED GY / GRN, SLT / VF GR, W SRTD, SIL CEM, SCAT CHL, P / NO POR, TR FO, PRED NS, NO ODOR W/SH - GY / GRN / SCAT RED

SH - AA W/ SCAT SS - LT GY, VF / F / SCAT M GR, PRED W SRTD, SA / R, SIL CEM, SL / MOD CHL, TR P / NO POR, VSSFO, NO ODOR, TR SPTY STN, NO FLUOR, NO CUT W/LS - WHT / CRM, VF XLN, AREN, SL OOL, SUBCHKY / DNS, NS

LS - WHT / CRM, VF XLN, AREN, VF / F QTZ GR, OOL IN PT, CHKY IN PT, PRED DNS, NS

LS - WHT / CRM, VF XLN, AREN, VF / F QTZ GR, OOL IN PT, CHKY IN PT, PRED DNS, NS

LS - CRM / TAN, VF / F XLN, SCAT OOL, SUBCHKY IN PT, PRED DNS, NS W/TR CHT - GY / ORG W/ ABNT LS - AS ABOVE

LS - CRM / TAN, VF / F XLN, SCAT OOL, SUBCHKY IN PT, PRED DNS, NS W/TR CHT - GY / ORG

LS - CRM / TAN, VF / F XLN, SCAT OOL, SUBCHKY IN PT, PRED DNS, NS W/ SCAT CHT - GY / ORG / BRN

TOTAL DEPTH 4730 (1733)
07/06/14 @ 5:45 PM

Vis: 65, Wt: 9.1,
YP: 22, GelS: 9/31,
pH: 10.0, WL: 7.8,
ChI: 5000, Sol: 5.4,
LCM: 1#

Vis: 58, Wt: 9.1
LCM: 1#