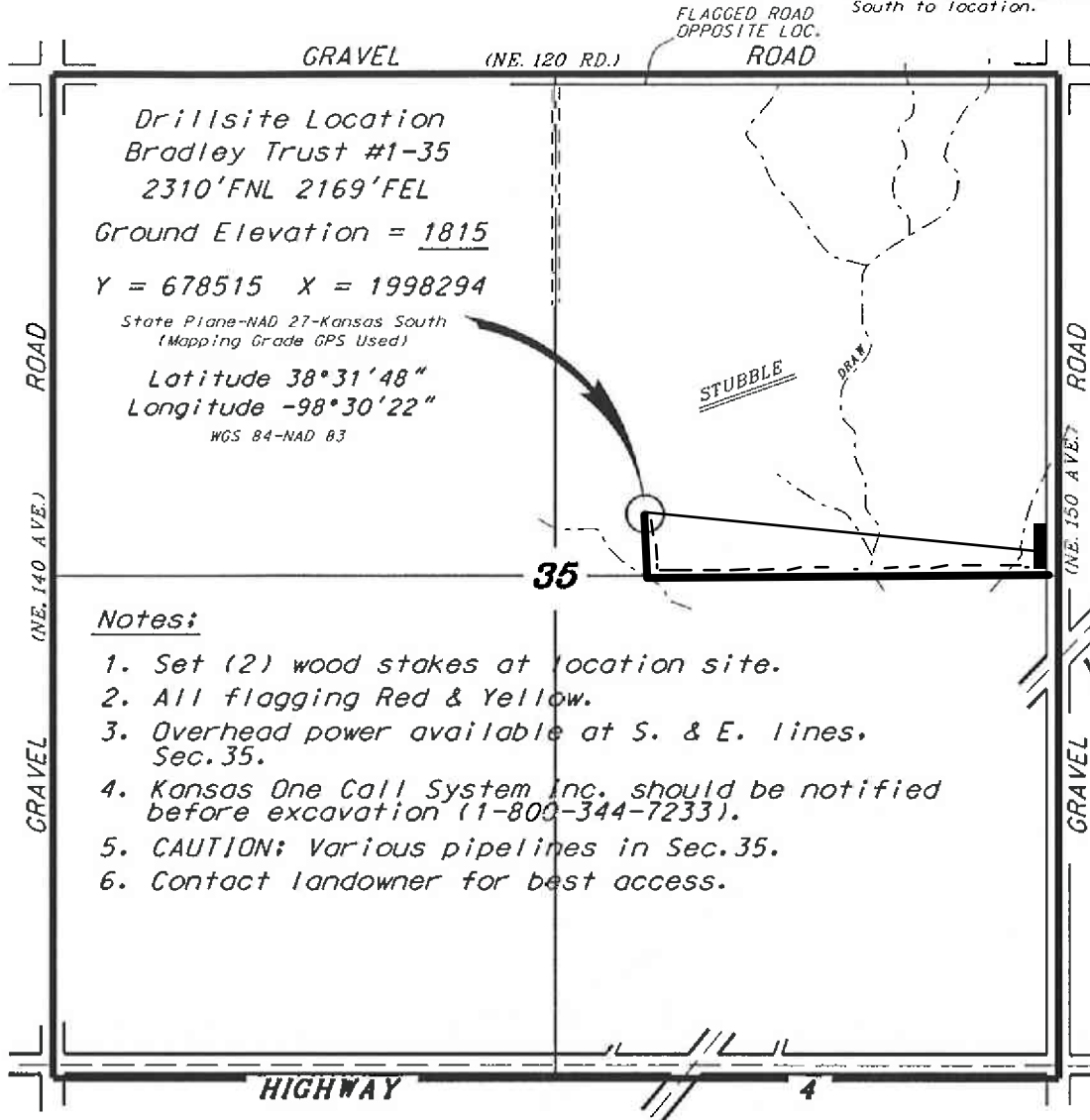


L.D. DRILLING, INC.
 BRADLEY LEASE
 NE. 1/4, SECTION 35, T17S, R11W
 BARTON COUNTY, KANSAS

Directions:
 From the intersection of Highway 281 and Highway 4 (in Hoisington, Kansas) go 14.2 miles East on Highway 4 to the SW. corner of Section 35, then go 1.0 miles North, then go 0.58 miles East to a flag on the south edge of road, then go 0.43 miles South to location.

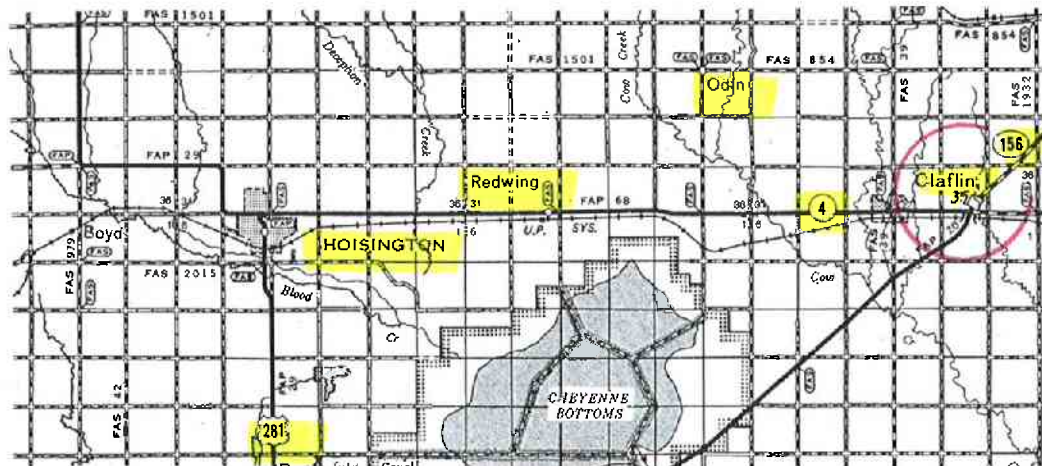


Drillsite Location
 Bradley Trust #1-35
 2310'FNL 2169'FEL
 Ground Elevation = 1815
 Y = 678515 X = 1998294
 State Plane-NAD 27-Kansas South
 (Mapping Grade GPS Used)
 Latitude 38°31'48"
 Longitude -98°30'22"
 WGS 84-NAD 83

Notes:

1. Set (2) wood stakes at location site.
2. All flagging Red & Yellow.
3. Overhead power available at S. & E. lines, Sec. 35.
4. Kansas One Call System Inc. should be notified before excavation (1-800-344-7233).
5. CAUTION: Various pipelines in Sec. 35.
6. Contact landowner for best access.

*Ingress and egress to location as shown on this plat is for usage only and may not be legally opened for public use. Contact landowner, tenant and county road department for access.



Controlling data is based upon the best maps and photographs available to us and upon a regular section of land containing 640 acres.
 Approximate section lines were determined using the normal standard of care of oilfield surveyors practicing in the state of Kansas. The section corners, which establish the precise section lines, were not necessarily located, and the exact location of the drillsite location in the section is not guaranteed. Therefore, the operator securing this service and occupying this plat and all other parties relying thereon agree to hold Central Kansas Oilfield Services, Inc., its officers and employees harmless from oil losses, costs and expenses and said entities released from any liability from incidental or consequential damages.
 Elevations derived from National Geodetic Vertical Datum.

Date July 11, 2014