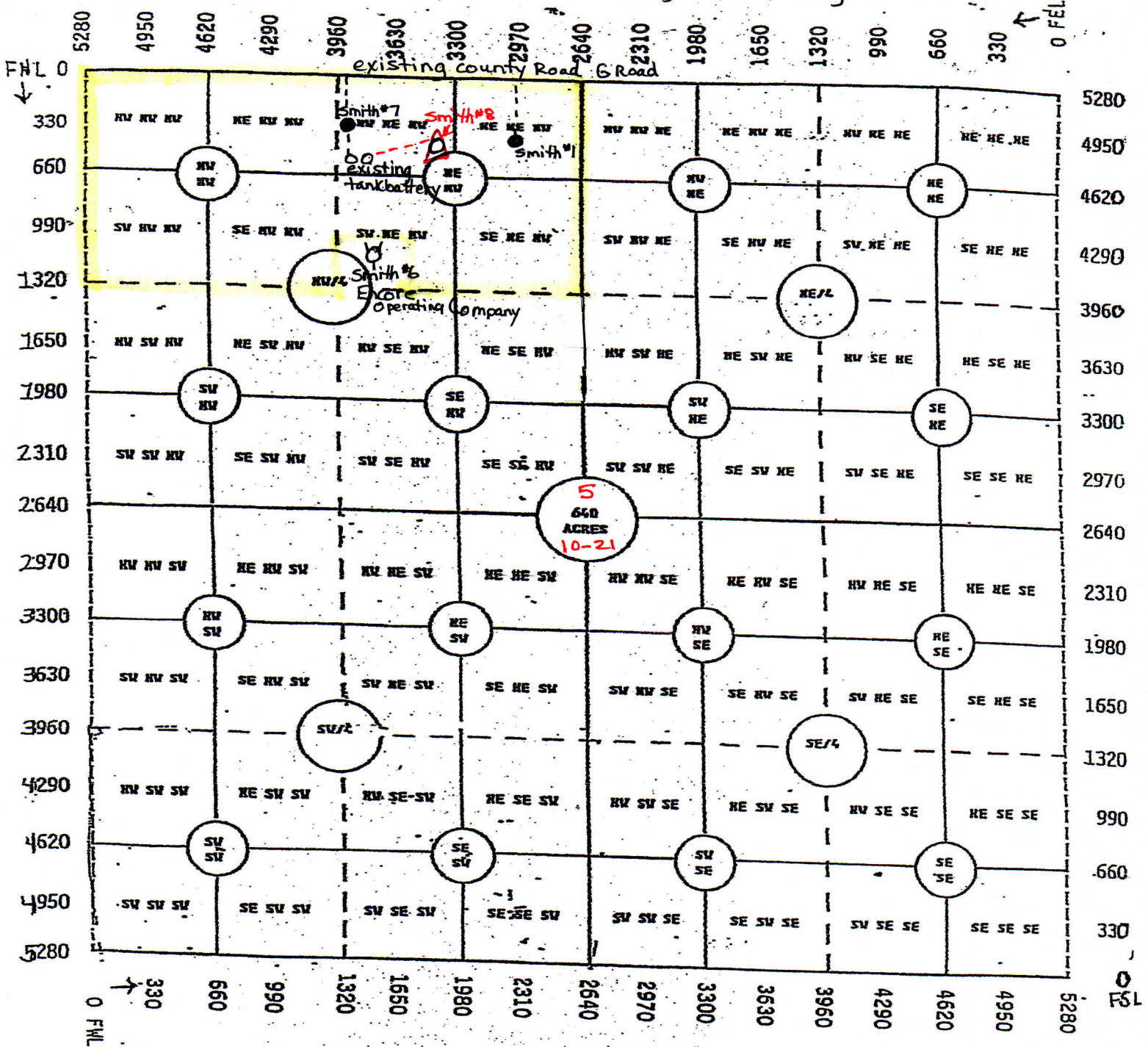


Bowman Oil Company

Smith Lease N/2 of NW/4 of S5-T10S-R21W
 (Lease excludes 10 acres surrounding Encore Operating-Smith #6 SWD of Graham County, Kansas)



Intent for Smith #8 SE NW NE NW - 530' FNL + 1900' FWL - NW corner
 --- existing lease road --- proposed lease road and lead line

if Production Pipe is set on Smith #8 - a new leadline will be
 layed from #8 to existing tank battery

note * Smith #1 API # 15-065-00313-0001
 Bowman Oil Company not listed as Operator on KGS website