

TRILOBITE TESTING, INC.

DRILL STEM TEST REPORT

Victory Oper. Inc.

16-26s-15w Pratt Co. KS

6 N. Scottsdale
Wichita, KS 67230

Smith-Curtis 1-16

Job Ticket: 52491

DST#: 1

ATTN: Keith Reavis

Test Start: 2014.04.12 @ 06:30:13

GENERAL INFORMATION:

Formation: **Lansing B**

Deviated: No Whipstock: 0.00 ft (KB)

Time Tool Opened: 09:20:43

Time Test Ended: 14:11:58

Test Type: Conventional Bottom Hole (Initial)

Tester: Ryan Reynolds

Unit No: 68

Interval: **3922.00 ft (KB) To 3955.00 ft (KB) (TVD)**

Total Depth: 3955.00 ft (KB) (TVD)

Hole Diameter: 7.88 inches Hole Condition: Fair

Reference Elevations: 2063.00 ft (KB)

2051.00 ft (CF)

KB to GR/CF: 12.00 ft

Serial #: 8790

Inside

Press@RunDepth: 124.76 psig @ 3923.00 ft (KB)

Start Date: 2014.04.12

End Date:

2014.04.12

Capacity: 8000.00 psig

Last Calib.: 2014.04.12

Start Time: 06:30:18

End Time:

14:11:57

Time On Btm: 2014.04.12 @ 09:17:43

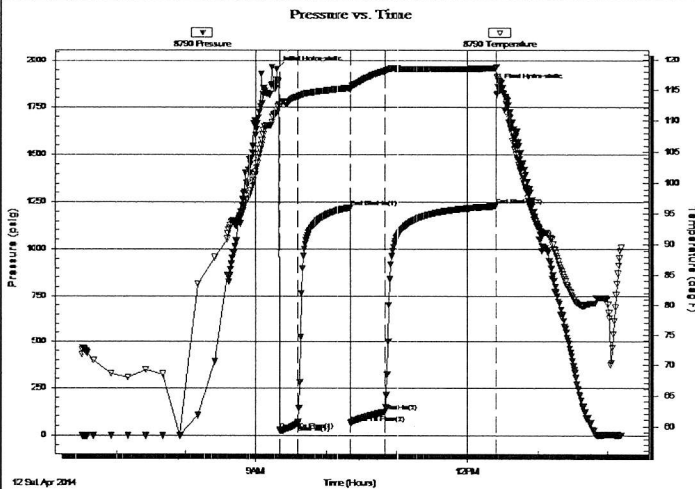
Time Off Btm: 2014.04.12 @ 12:25:58

TEST COMMENT: IF: Strong blow . BOB @ 30sec. No GTS

IS: No blow

FF: Fair blow . surf. - 6"

FSI: No blow



PRESSURE SUMMARY

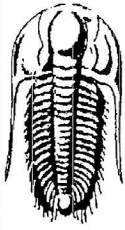
Time (Min.)	Pressure (psig)	Temp (deg F)	Annotation
0	1954.64	111.27	Initial Hydro-static
3	25.81	112.59	Open To Flow (1)
19	59.18	113.95	Shut-In(1)
63	1220.90	115.35	End Shut-In(1)
64	63.73	115.04	Open To Flow (2)
93	124.76	118.14	Shut-In(2)
187	1229.08	118.63	End Shut-In(2)
189	1858.34	116.82	Final Hydro-static

Recovery

Length (ft)	Description	Volume (bbl)
150.00	MCW 4%w, 96%w	0.74
60.00	WCM 33%w, 67%w	0.30
	595' GIP	

Gas Rates

	Choke (inches)	Pressure (psig)	Gas Rate (m ³ /d)



TRILOBITE
TESTING, INC.

DRILL STEM TEST REPORT

FLUID SUMMARY

Victory Oper. Inc.

16-26s-15w Pratt Co. KS

6 N. Scottsdale
Wichita, KS 67230

Smith-Curtis 1-16

Job Ticket: 52491

DST#: 1

ATTN: Keith Reavis

Test Start: 2014.04.12 @ 06:30:13

Mud and Cushion Information

Mud Type: Gel Chem

Cushion Type:

Oil API:

deg API

Mud Weight: 9.00 lb/gal

Cushion Length:

ft

Water Salinity:

91000 ppm

Viscosity: 60.00 sec/qt

Cushion Volume:

bbl

Water Loss: 8.79 in³

Gas Cushion Type:

Resistivity: ohm.m

Gas Cushion Pressure:

psig

Salinity: 2000.00 ppm

Filter Cake: 0.02 inches

Recovery Information

Recovery Table

Length ft	Description	Volume bbl
150.00	M CW 4% m, 96% w	0.738
60.00	W CM 33% w, 67% m	0.295
	595' GIP	

Total Length: 210.00 ft

Total Volume: 1.033 bbl

Num Fluid Samples: 0

Num Gas Bombs: 0

Serial #: none

Laboratory Name:

Laboratory Location:

Recovery Comments:

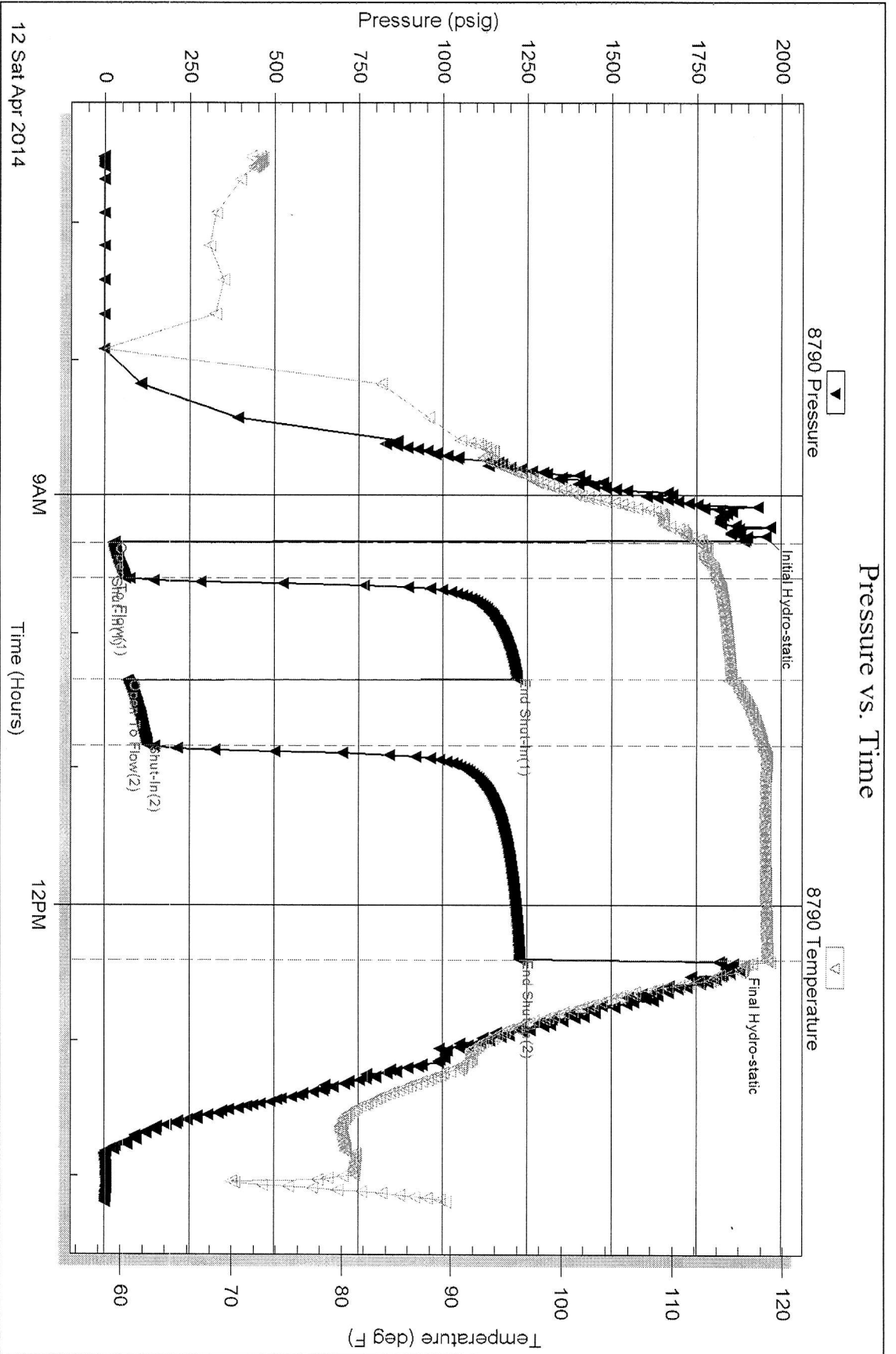
Serial #: 8790

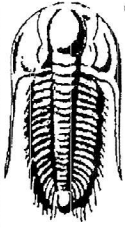
Inside

Victory Oper. Inc.

Smith-Curtis 1-16

DST Test Number: 1





**TRILOBITE
TESTING, INC.**

DRILL STEM TEST REPORT

Victory Oper. Inc.

16-26s-15w Pratt Co. KS

6 N. Scottsdale
Wichita, KS 67230

Smith-Curtis 1-16

Job Ticket: 52492

DST#: 2

ATTN: Keith Reavis

Test Start: 2014.04.13 @ 07:08:44

GENERAL INFORMATION:

Formation: **Mississippi**

Deviated: No Whipstock: 0.00 ft (KB)

Time Tool Opened: 08:42:59

Time Test Ended: 13:42:14

Test Type: Conventional Bottom Hole (Reset)

Tester: Ryan Reynolds

Unit No: 68

Interval: **4332.00 ft (KB) To 4388.00 ft (KB) (TVD)**

Total Depth: 4388.00 ft (KB) (TVD)

Hole Diameter: 7.88 inches Hole Condition: Fair

Reference Elevations: 2063.00 ft (KB)

2051.00 ft (CF)

KB to GR/CF: 12.00 ft

Serial #: **8790**

Inside

Press@RunDepth: 28.22 psig @ 4337.00 ft (KB)

Start Date: 2014.04.13

End Date:

2014.04.13

Capacity: 8000.00 psig

Last Calib.: 2014.04.13

Start Time: 07:08:49

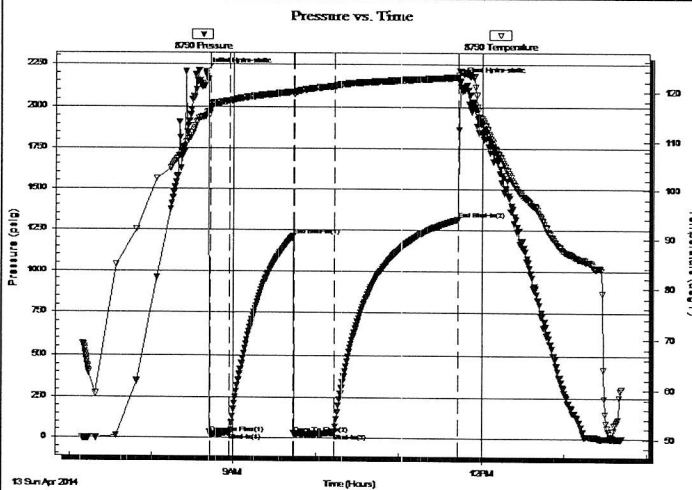
End Time:

13:42:13

Time On Btm: 2014.04.13 @ 08:39:44

Time Off Btm: 2014.04.13 @ 11:44:14

TEST COMMENT: IF: Strong blow . BOB @ 15sec. NO GTS
IS: Weak surf. BB
FF: Strong blow . BOB immed. GTS @ 29min. TSTM
FSI: No blow



PRESSURE SUMMARY

Time (Min.)	Pressure (psig)	Temp (deg F)	Annotation
0	2203.28	115.44	Initial Hydro-static
4	21.01	116.34	Open To Flow (1)
18	28.93	118.29	Shut-In(1)
64	1209.54	120.02	End Shut-In(1)
65	22.70	119.73	Open To Flow (2)
94	28.22	121.14	Shut-In(2)
184	1315.07	122.89	End Shut-In(2)
185	2150.09	124.04	Final Hydro-static

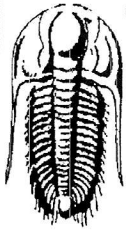
Recovery

Length (ft)	Description	Volume (bbl)
40.00	drlg mud 100%m	0.20

* Recovery from multiple tests

Gas Rates

	Choke (inches)	Pressure (psig)	Gas Rate (Mcf/d)



TRILOBITE
TESTING, INC.

DRILL STEM TEST REPORT

FLUID SUMMARY

Victory Oper. Inc.

16-26s-15w Pratt Co. KS

6 N. Scottsdale
Wichita, KS 67230

Smith-Curtis 1-16

Job Ticket: 52492

DST#: 2

ATTN: Keith Reavis

Test Start: 2014.04.13 @ 07:08:44

Mud and Cushion Information

Mud Type: Gel Chem	Cushion Type:	Oil API:	deg API
Mud Weight: 9.00 lb/gal	Cushion Length: ft	Water Salinity:	4000 ppm
Viscosity: 47.00 sec/qt	Cushion Volume: bbl		
Water Loss: 9.19 in ³	Gas Cushion Type:		
Resistivity: ohm.m	Gas Cushion Pressure: psig		
Salinity: 4000.00 ppm			
Filter Cake: 0.02 inches			

Recovery Information

Recovery Table

Length ft	Description	Volume bbl
40.00	drlg mud 100%m	0.197

Total Length: 40.00 ft Total Volume: 0.197 bbl

Num Fluid Samples: 0

Num Gas Bombs: 0

Serial #: none

Laboratory Name:

Laboratory Location:

Recovery Comments:

Serial #: 8790

Inside

Victory Oper. Inc.

Smith-Qurtis 1-16

DST Test Number: 2

