



Scale 1:240 (5"=100') Imperial  
Measured Depth Log

Well Name: SACK #1  
API: 15-051-26686-00-00  
Location: NE SW NE SE SECTION 27 13S 19W  
License Number: 5663  
Spud Date: 4/21/2014  
Surface Coordinates: 1705' FROM SOUTH LINE OF SECTION  
810' FROM EAST LINE OF SECTION  
Bottom Hole Coordinates: 1705' FROM SOUTH LINE OF SECTION  
810' FROM EAST LINE OF SECTION  
Ground Elevation (ft): 2096' K.B. Elevation (ft): 2101'  
Logged Interval (ft): 2900' To: 3795' Total Depth (ft): 3795'  
Formation: ARBUCKLE  
Type of Drilling Fluid: CHEMICAL, MUD-CO

Region: ELLIS CO. KS.

Drilling Completed: 5/1/2014

Printed by WellSight Log Viewer from WellSight Systems 1-800-447-1534 www.WellSight.com

OPERATOR

Company: HESS OIL COMPANY  
Address: P.O. BOX 1009  
MCPHERSON, KANSAS 67460-1009  
(620) 241-4640

GEOLOGIST

Name: DAVID GOULD (LOGGER)  
Company: DMT COMPANY  
Address: 532 SUNRISE  
PRATT, KANSAS 67124  
(620) 388-2847

## Comments

**CONTRACTOR:**  
MALLARD, J. V., INC #2

**BIT RECORD:**  
A, 12 1/4", RT, RR, 0-218  
1, 7 7/8", F27, RR, 218-3795

**SURVEYS:**  
218 1 DEGREE  
3340 1 DEGREE

**DAILY STATUS: (7:00 AM)**

4/21/14 Moved in Mallard Drilling rig. Spudded @ 3:50 pm. Drilled to 218' and ran 5 jts. 8-5/8" x 20# x 211' surface casing. Set @ 218' and cemented w/150 sx Common, 2% gel, 3% cc. CDC. PD @ 8:30 pm

4/22/14 Rig work @ 218'

4/23/14 Drilling @ 1560'

4/24/14 Drilling @ 2528'

4/25/14 CFS @ 3162'. Drilled to 3340'. DST #1: 3322'-3340'. 30-30-30-30. Rec 3' M w/oil spots.

4/26/14 CFS @ 3392'. Drilled to 3475'. DST #2: 3409'-3475'. 30-30-pulled tool. Rec 5' M.

4/27/14 Drilled to 3520'. DST #3: 3474'-3520'. 45-45-45-45. Rec 5' M. Drilled to 3604'.

4/28/14 DST #4: 3539'-3604'. 45-45-45-45. Rec 300' MCO (70% O, 30% M). Drilled to 3710'. DST #5: 3698'-3710'.  
Missrun - packer failure.

4/29/04 DST #7: 5' mud

Well Name & No.: Sack #1 Company: Hess Oil Company Test No.: 1 Interval Tested: 3322 – 3340

Zone Tested: LaCompton Times: 30-30-30-30

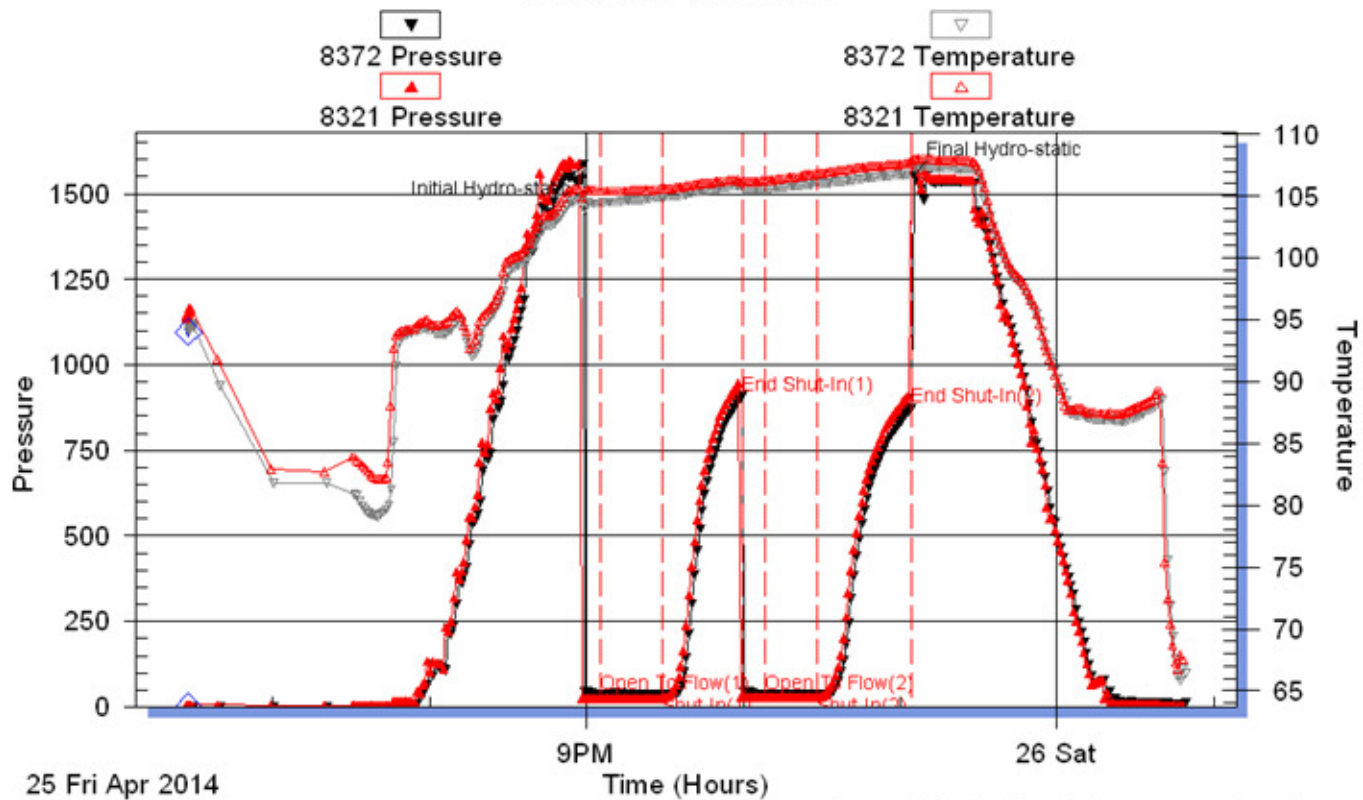
Blow Description: IFP: No Blow ISI: No Blow FFP: No Blow FSI: No Blow

Rec: 3 Feet of M with oil spots Rec. Total: 3', BHT: 107 Gravity: N/C

Initial Hydrostatic: 1585 First Initial Flow: 38 First Final Flow: 38 Initial Shut-In: 910

Second Initial Flow: 36 Second Final Flow: 38 Final Shut-In: 874 Final Hydrostatic: 1556

### Pressure vs. Time



Gauge 8372: Displaying every 2 points.

Well Name & No.: Sack #1 Company: Hess Oil Company Test No.: 2 Interval Tested: 3409 – 3475

Zone Tested: Lansing Times: 30-30 Pulled Tool

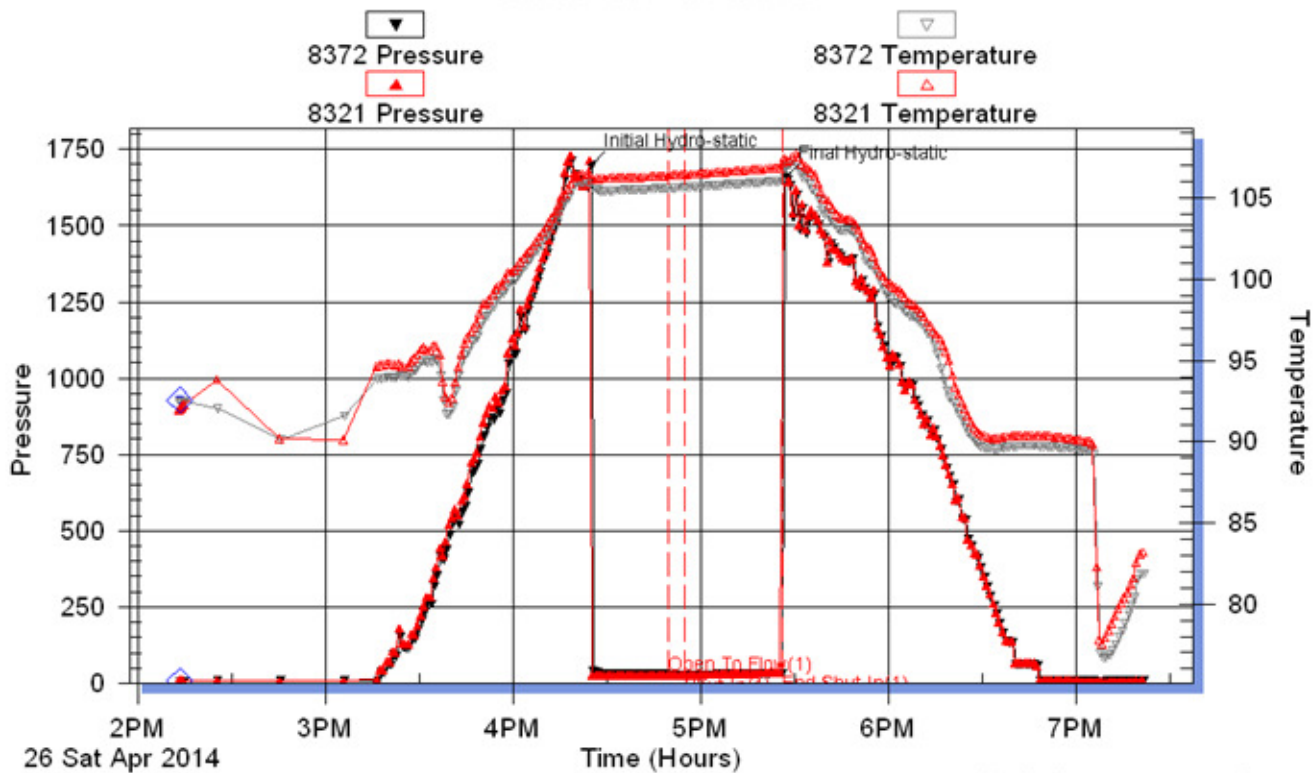
Blow Description: IFP: Weak surface blow dead in 15 min. ISI: No Blow FFP: Pulled Tool FSI: Pulled Tool

Rec: 5 Feet of M Rec. Total: 3', BHT: 106 Gravity: N/C

Initial Hydrostatic: 1200 First Initial Flow: 26 First Final Flow: 29 Initial Shut-In: 34

Second Initial Flow: Pulled Second Final Flow: Pulled Final Shut-In: Pulled Final Hydrostatic: Pulled

### Pressure vs. Time



Gauge 8372: Displaying every 2 points.

Well Name & No.: Sack #1 Company: Hess Oil Company Test No.: 3 Interval Tested: 3474 – 3520

Zone Tested: LKC Times: 45-45-45-45

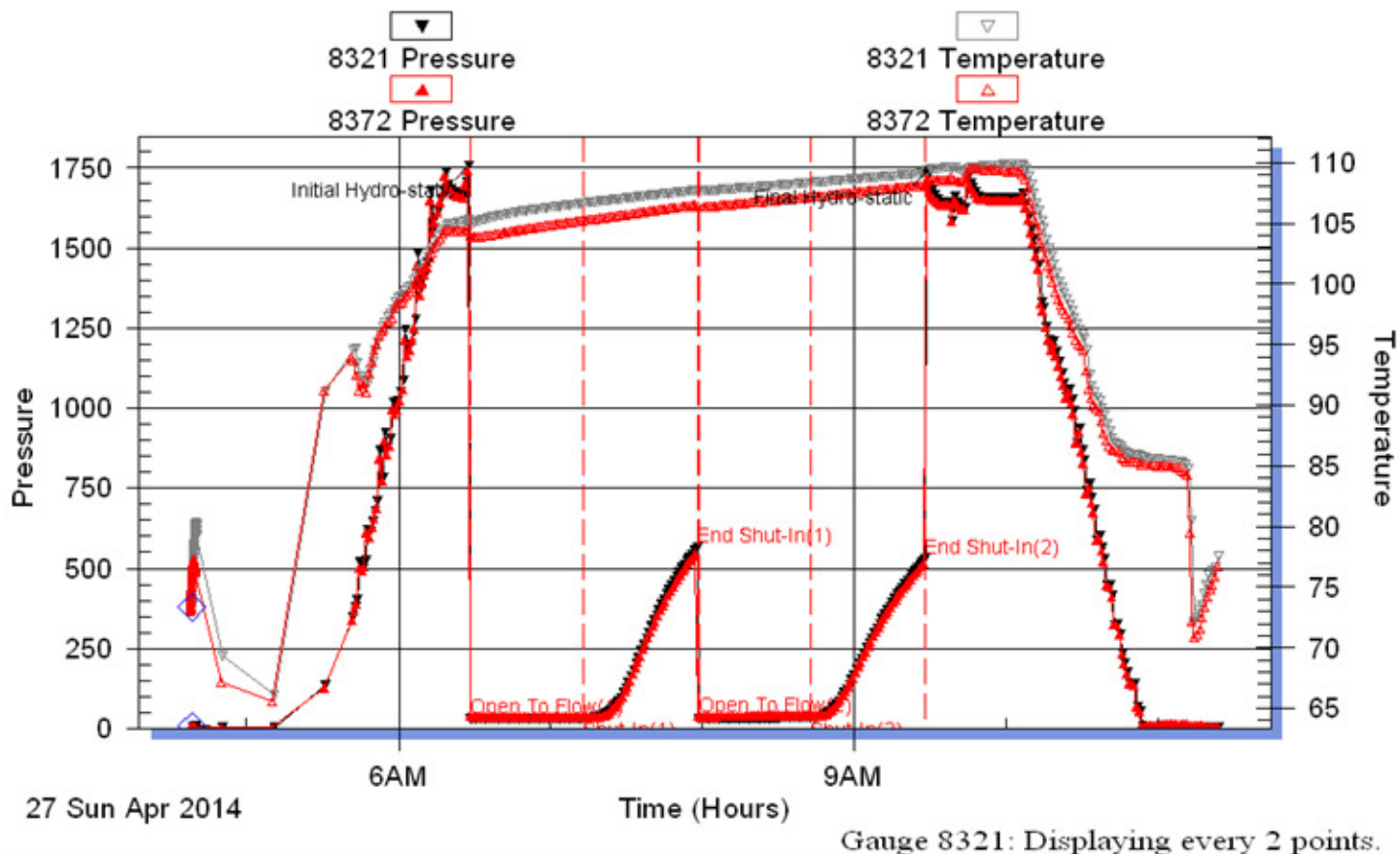
Blow Description: IFP: Surface Blow ISI: No Blow FFP: No Blow FSI: No Blow

Rec: 5 Feet of M Rec. Total: 5', BHT: 109 Gravity: N/C

Initial Hydrostatic: 1759 First Initial Flow: 31 First Final Flow: 33 Initial Shut-In: 567

Second Initial Flow: 33 Second Final Flow: 34 Final Shut-In: 529 Final Hydrostatic: 1738

### Pressure vs. Time



Well Name & No.: Sack #1 Company: Hess Oil Company Test No.: 4 Interval Tested: 3539 – 3604

Zone Tested: LKC Times: 45-45-45-45

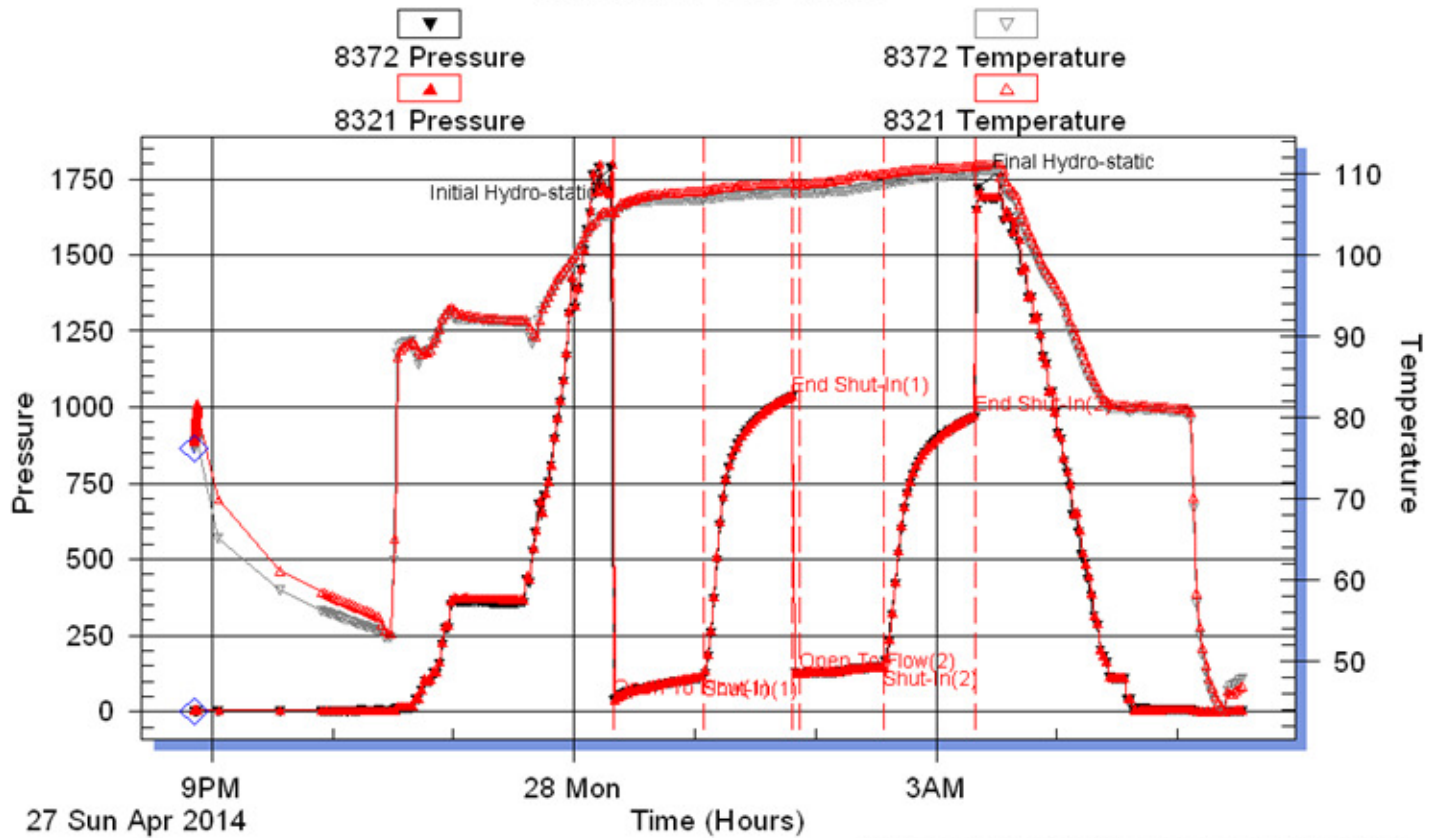
Blow Description: IFP: BOB in 20 min. ISI: No Blow FFP: BOB in min. FSI: No Blow

Rec: 300 Feet of MCO, 70% Oil, 30% Mud Rec. Total: 300', BHT: 110 Gravity: N/C

Initial Hydrostatic: 1787 First Initial Flow: 38 First Final Flow: 112 Initial Shut-In: 1034

Second Initial Flow: 124 Second Final Flow: 146 Final Shut-In: 967 Final Hydrostatic: 1718

### Pressure vs. Time



Well Name & No.: Sack #1 Company: Hess Oil Company Test No.: 5 Interval Tested: 3698 – 3710

Zone Tested: Marmaton Times: Miss Run (Packer Failure)

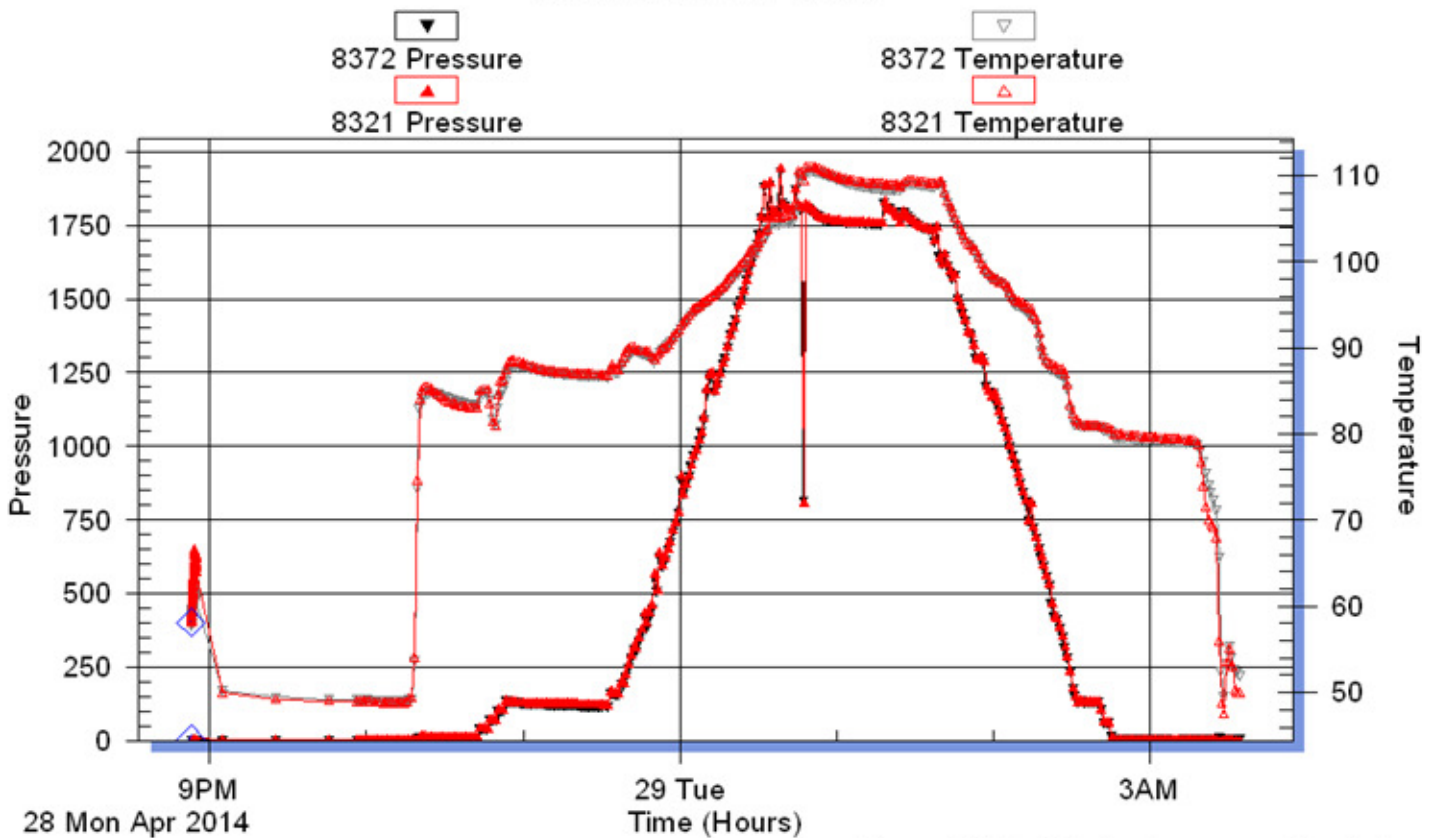
Blow Description: IFP: ISI: FFP: FSI:

Rec: 200 Feet of M, 1000% Mud Rec. Total: 200', BHT: N/C Gravity: N/C

Initial Hydrostatic: First Initial Flow: First Final Flow: Initial Shut-In:

Second Initial Flow: Second Final Flow: Final Shut-In: Final Hydrostatic:

### Pressure vs. Time



Gauge 8321: Displaying every 2 points.

Well Name & No.: Sack #1 Company: Hess Oil Company Test No.: 6 Interval Tested: 3655 – 3710

Zone Tested: Marmaton Times: 30-30-30-30

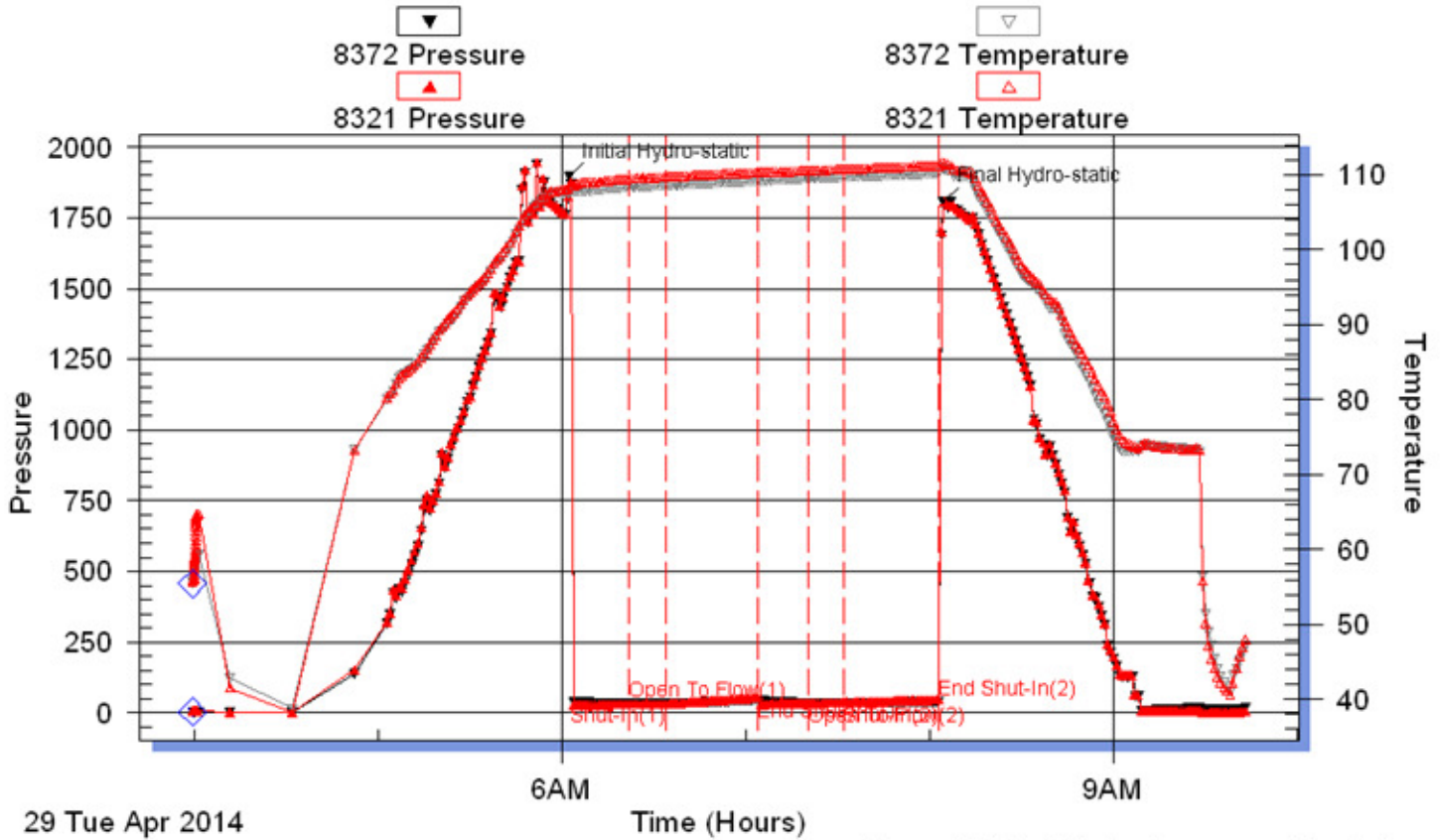
Blow Description: IFP: Surface Blow ISI: No Blow FFP: BOB in min. FSI: No Blow

Rec: 5 Feet of M, 100% Mud Rec. Total: 5', BHT: 110 Gravity: N/C

Initial Hydrostatic: 1896 First Initial Flow: 34 First Final Flow: 34 Initial Shut-In: 47

Second Initial Flow: 35 Second Final Flow: 35 Final Shut-In: 41 Final Hydrostatic: 1808

### Pressure vs. Time



Gauge 8372: Displaying every 2 points.



Well Name & No.: Sack #1 Company: Hess Oil Company Test No.: 7 Interval Tested: 3722 – 3760

Zone Tested: Cong. Times: 45-45-30-30

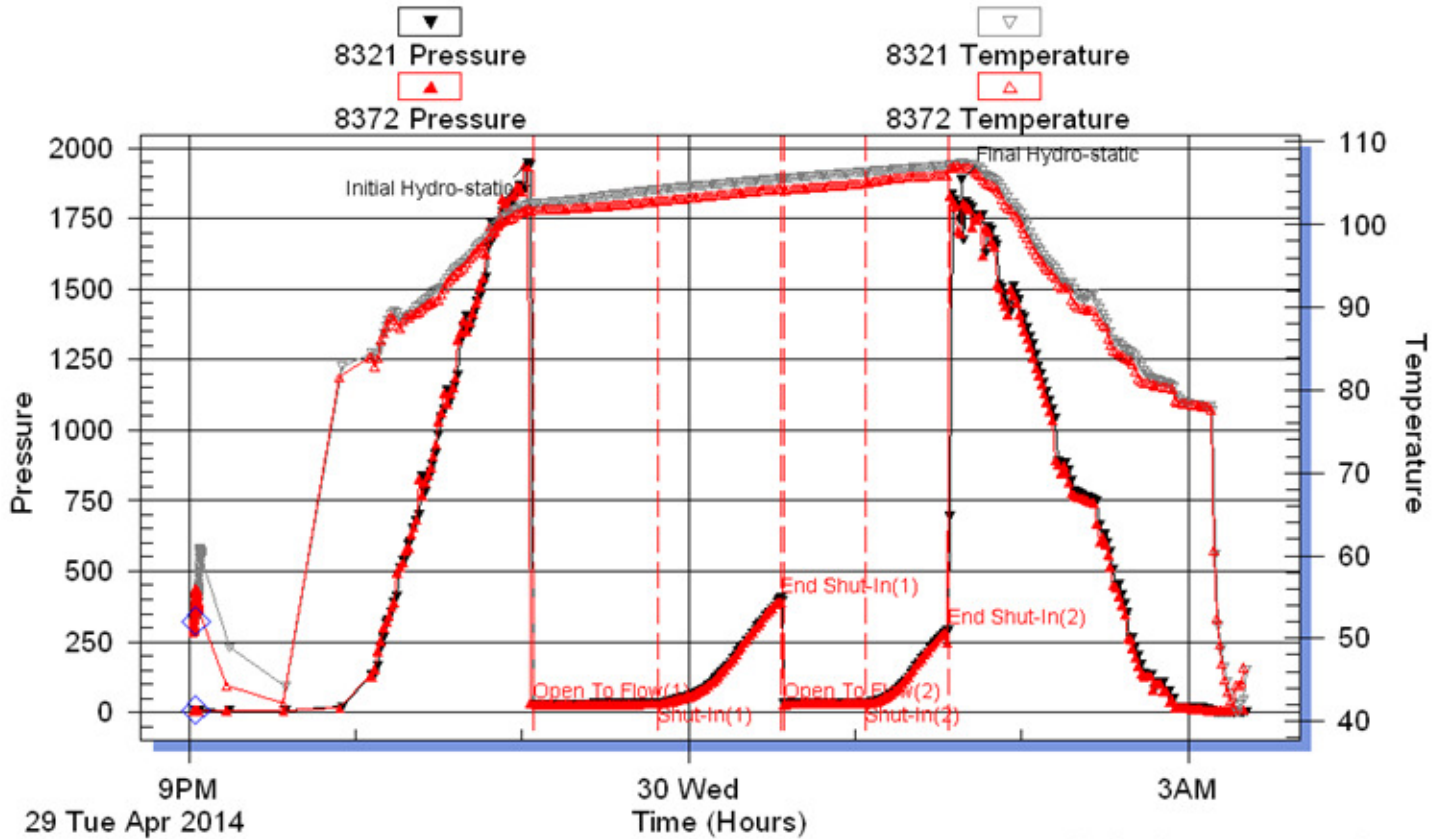
Blow Description: IFP: Surface Blow ISI: No Blow FFP: BOB in min. FSI: No Blow

Rec: 5 Feet of MCO, 100% Mud Rec. Total: 5', BHT: 107 Gravity: N/C

Initial Hydrostatic: 1947 First Initial Flow: 30 First Final Flow: 33 Initial Shut-In: 405

Second Initial Flow: 33 Second Final Flow: 33 Final Shut-In: 293 Final Hydrostatic: 1886

### Pressure vs. Time



Gauge 8321: Displaying every 2 points.

### ROCK TYPES

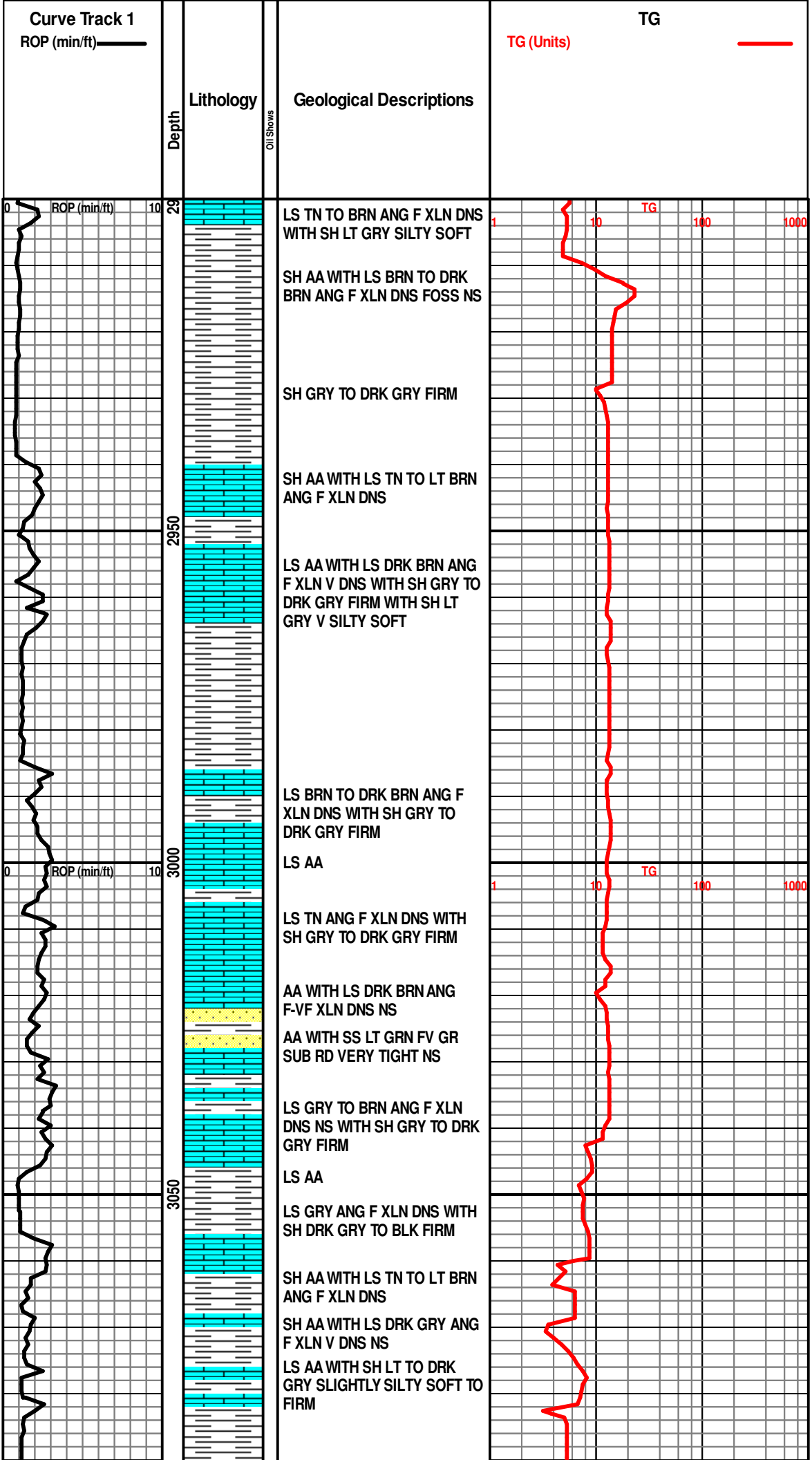
Anhy  
Bent  
Brec  
Cht

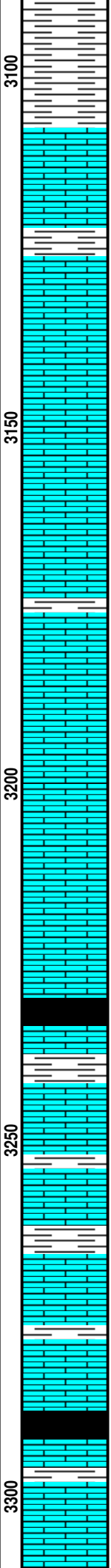
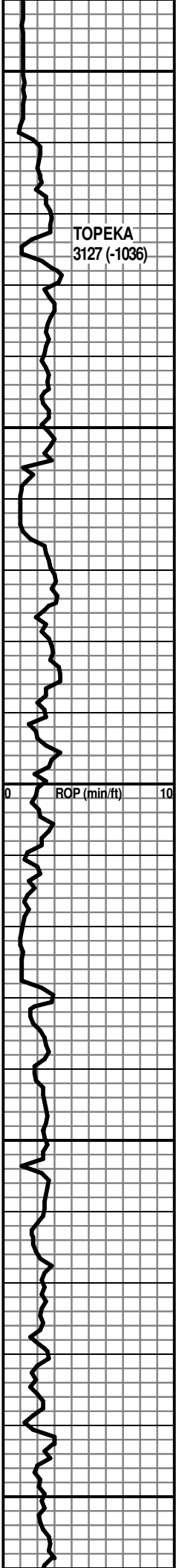
Clyst  
Coal  
Congl  
Dol

Gyp  
Igne  
Lmst  
Meta

Mrlst  
Salt  
Shale  
Shcol

Shgy  
Sltst  
Ss  
Till





SH AA WITH LS BRN TO DRK  
BRN ANG F XLN DNS FOSS NS

SH GRY TO GRN FIRM

LS TN ANG F XLN DNS NS  
WITH SH AA

LS TN TO LT GRY ANG F XLN  
DNS WITH SOME SLIGHTLY  
CHALKY

LS LT TN ANG F XLN F POS NS

LS AA WITH SLIGHT STAIN NO  
ODOR PAL FLOR NO CUT

LS LT GRY TO TN ANG F XLN  
DNS WITH SH DRK GRY TO  
GRY FIRM

LS TN TO BRN ANG F XLN DNS  
NS

LS GRY TO DRK BRN ANG F  
XLN DNS NS

LS AA WITH CHERT DRK GRY  
SHAPE HD WITH SH GRY FIRM

LS TN TO BRN ANG F XLN DNS  
NS WITH TR PYRITE

LS TN TO OFF WHT ANG F XLN  
SOME VUGGY DNS WITH  
SOME F POS

LS AA WITH SH BLK CARB

LS LT TN ANG F XLN DNS  
SOME SLIGHTLY CHALKY NS

LS AA WITH SH GRY FIRM

AA WITH TR CHERT DRK GRY  
SHARP HD

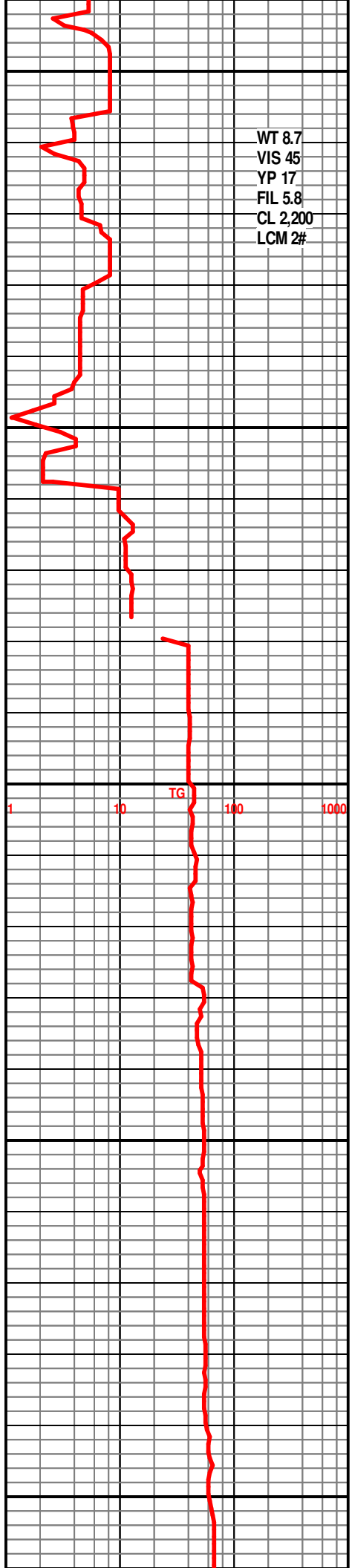
LS TN TO LT BRN ANG F XLN  
DNS WITH TR INTERBEDDED  
PYRITE NS

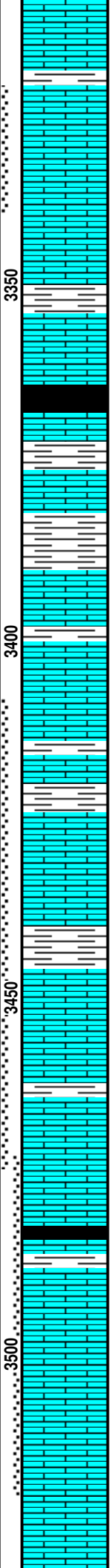
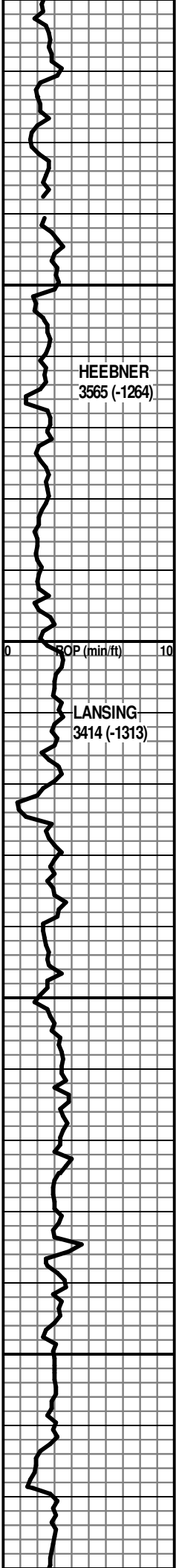
LS AA WITH SH BLK CARB

LS OFF WHT TO TN TO BRN  
ANG F XLN FOSS MOSTLY  
DNS WITH SOME BEING  
CHALKY NS

LS AA WITH LS LT GRY ANG F  
XLN DNS NO MFL CH GRY TO

WT 8.7  
VIS 45  
YP 17  
FIL 5.8  
CL 2,200  
LCM 2#





XLN DNS TO SH GRY TO GRN FIRM WITH TR PYRITE

LS AA WITH LS TN TO BRN ANG F XLN DNS NS

LS TN ANG F XLN F POS F V STAIN SLIGHT SHOW OF FREE OIL PAL FLOR SLIGHT CUT F ODER

LS LT TN TO BRN ANG F XLN DNS NS WITH SH GRY TO BLK TO GEN FIRM

LS AA WITH LS LT GRY ANG F XLN DNS NS WITH SH BLK CARB

LS TN TO BRN ANG F XLN DNS WITH TR CHERT DRK BRN SHARP HD

LS CRM TO TN ANG F XLN DNS POS STAIN SHOW OF DEAD OIL WITH VERY LITTLE FREE OIL NO FLOR VP CUT VERY POOR ODER

LS WHT TO OFF WHT ANG F XLN DNS NS WITH SH GRY TO GRN FIRM

LS AA WITH LS TN ANG F XLN DNS NS WITH SH GRY TO RED FIRM

LS OFF WHT TO TN ANG F XLN DNS NS WITH SH AA

LS OFF WHT TO TN ANG F XLN DNS WITH V SLIGHT ODER F STAIN V PAL FLOR NO FREE OIL V SLIGHT CUT

LS AA WITH BETTER ODER G STAIN PAL FLOR F-G CUT SHOW OF FREE OIL

LS AA WITH LS LT GRY ANG F XLN DNS NS

LS TN TO LT GRY ANG F XLN DNS NS WITH LS BRN TO DRK GRY ANG F XLN DNS NS WITH SH GRY FIRM

LS TN TO CRM ANG F-VF XLN SOME CHALKY WITH SOME STAIN SOME DEAD OIL SLIGHT SHOW OF FREE OIL PAL FLOR F-G CUT V SLIGHT ODER

LS WHT TO LT GRY ANG F-M XLN DNS P POS F ODOR G STAIN SHOW OF FREE OIL F-G CUT PAL FLOR

LS TN ANG F XLN DNS TO V DNS NS WITH SH DRK GRY TO BLK SOME CARB

LS TN TO LT BRN ANG F XLN VUGGY DNS WITH SLIGHT STAIN V PAL FLOR NO CUT TIGHT WITH LS LT TN ANG F XLN POOR POS DNS G STAIN F SHOW OF FREE OIL LOTS OF DEAD OIL PAL FLOT F CUT V SLIGHT ODOR

LS WHT TO LT TN ANG F XLN DNS F-P POS G STAIN SLIGHT ODOR FREE OIL G FLOR G CUT

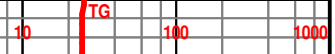
LS TN TO LT GRY TO BRN ANG F XLN V DNS NS

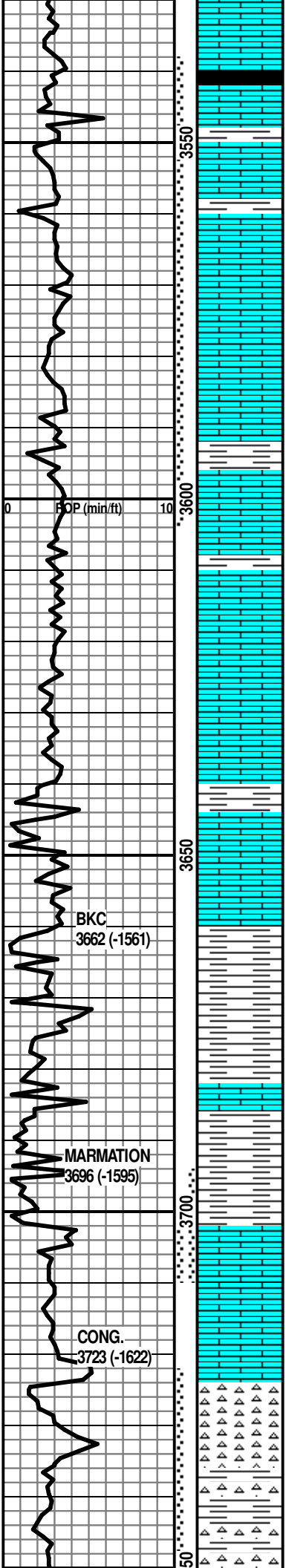
DST #1  
3322 TO 3340  
SEE REPORT ABOVE

DST #2  
3409 TO 3475  
SEE REPORT ABOVE

DST #3  
3474 TO 3520  
SEE REPORT ABOVE

WT 9.15  
VIS 57  
YP 19  
FIL 9.6  
CL 6,000  
LCM 0#





LS AA WITH LS LT GRY TO  
GRY ANG F XLN DNS NS WITH  
SH DRK GRY TO BLK FIRM

LS TN TO BRN F POS F-M XLN  
F-G STAIN F ODOR FREE OIL F  
YELLOW FLOR G CUT

LS TN TO BRN F-G POS M XLN  
F-G STAIN F ODOR G YELLOW  
FLOR G STREAMING CUT

LS AA WITH LS OFF WHT TO  
LT GRY ANG F XLN DNS G  
STAIN NO FREE OIL PAL FLOR  
SLIGHT CUT

LS TN TO BRN ANG F XLN DNS  
NS

LS AA WITH SLIGHT OIL STAIN  
NO FLOR NO CUT NO FREE  
OIL

LS BRN ANG F XLN F-G OOLIC  
POR G STAIN G ODOR G  
SHOW OF FREE OIL G FLOR G  
STREAMING CUT

LS AA WITH MORE FREE OIL  
WITH LS AA WITH OIL DROPS  
FLOATING ON WATER IN CUP

LS AA WITH V SLIGHT STAIN  
NO ODOR NO FLOR NO CUT

LS LT TN TO BRN ANG F XLN  
DNS OOLIC DNS F STAIN NO  
FREE OIL

LS TN ANG F XLN DNS F POS  
G STAIN V SLIGHT ODOR V  
SLIGHT SHOW OF FREE OIL

LS TN TO CRM ANG F-VF XLN  
SOME CHALKY SOME DNS NS

LS TN TO LT GRY ANG F XLN  
OOLIC DNS NS

LS AA WITH SH GRY TO BLK  
FIRM

LS AA WITH SH RED V SOFT  
WITH SH GRN TO GRY FIRM

SH RED BRN GRY GRN FIRM  
WITH SH RED V SOFT

LS TN TO BRN ANG F-M XLN F  
POS VG STAIN G SHOW OF  
FREE OIL V PAL FLOR G  
STREAMING CUT

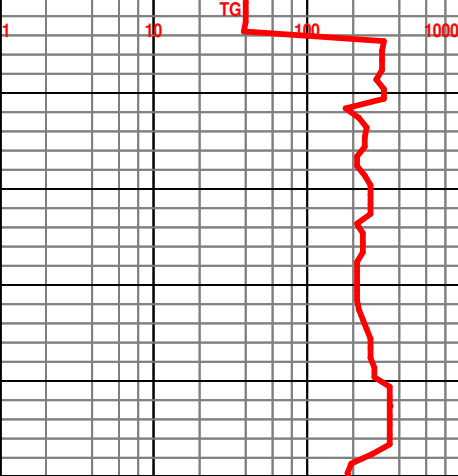
LS CRM TO TN TO LT GRY ANG  
F XLN DNS SOME CHERTY F  
STAIN NO FREE OIL WITH  
CHERT MULT COLOR SHARP  
HD WITH G STAIN NO FREE  
OIL

CHERT MULT COLOR SHARP  
HD WITH G STAIN NO FREE  
OIL WITH LS TN TO BRN F XLN  
OOLIC VG STAIN VG SHOW OF  
FREE OIL G YELLOW FLOR VG  
CUT SLIGHT ODOR

SH RED TO BRN TO GRY SOFT  
TO FIRM WITH CHERT MULT  
COLOR SHARP HD NS

DST #4  
3539 TO 3604  
SEE REPORT ABOVE

WT 9.3  
VIS 58  
YP 21  
FIL 10.0  
CL 7,300  
LCM 0#



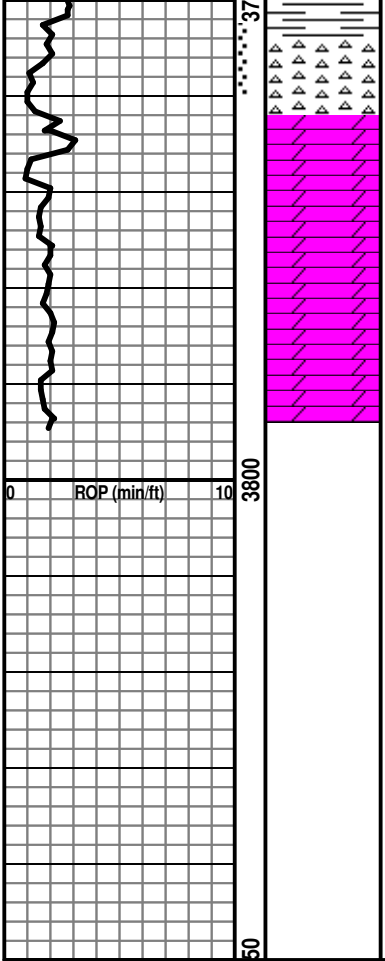
WT 9.2  
VIS 51  
YP 17  
FIL 9.6  
CL 8,000  
LCM 1#

DST #6  
3655 TO 3710  
SEE REPORT ABOVE

DST #5  
3698 TO 3610  
PACKER FAILURE  
SEE REPORT ABOVE

DST #7  
3722 TO 3760  
SEE REPORT ABOVE

WT 9.0  
VIS 48  
YP 17  
FIL 10.0  
CL 8,500  
LCM 3+ #



COLOR SHARP HD NS  
 LS TN TO LT GRY ANG TO SUB  
 ANG F- M XLN SOME SLIGHTY  
 SANDY F ODOR FG STAIN V  
 PAL FLOR G CUT LOTS OF  
 DRK BLK THICK OIL F SHOW  
 OF FREE OIL  
 LS LT TN TO CRM ANG F XLN  
 DNS SOME STAIN NO FREE  
 OIL WITH MUILT COLOR  
 CHERT WITH SH GRY TO RED  
 FIRM  
 MOSTLY LS AA WITH DOL LT  
 GRY ANG F-M XLN DNS NS  
 DOL LT GRY ANG F-M XLN F  
 POS SLIGHT STAIN NO FREE  
 OIL NO FLOR NO CUT

WT 9.0  
 VIS 51  
 YP 20  
 FIL 9.2  
 CL 8,500  
 LCM 3#

