

# T25S, R4E, 6th P.M.

## LEGEND:

- └─┘ = 90° SYMBOL
- = PROPOSED WELLHEAD.
- = TARGET BOTTOM HOLE.
- ▲ = SECTION CORNERS LOCATED.
- ⦿ = EXISTING WELL

Rebar in Concrete,  
1.2' Below Ground,  
In Road  
(State Plane NAD 27)  
N: 435823.66  
E: 2426318.58

Cap Flush W/Ground,  
E/S Fence  
(State Plane NAD 27)  
N: 435714.18  
E: 2420959.04

FRIESEN 1  
(State Plane NAD 27)  
N: 434377.59  
E: 2421325.85

BRANT 1  
(State Plane NAD 27)  
N: 435367.74  
E: 2425988.98

Brass Tab, 0.6' Below  
Ground, E/W Fence  
(State Plane NAD 27)  
N: 433159.92  
E: 2426337.98

OSBURN 5  
(State Plane NAD 27)  
N: 432761.93  
E: 2424024.01

OSBURN 1  
(State Plane NAD 27)  
N: 432113.84  
E: 2424687.22

OSBURN 3  
(State Plane NAD 27)  
N: 432101.44  
E: 2424028.01

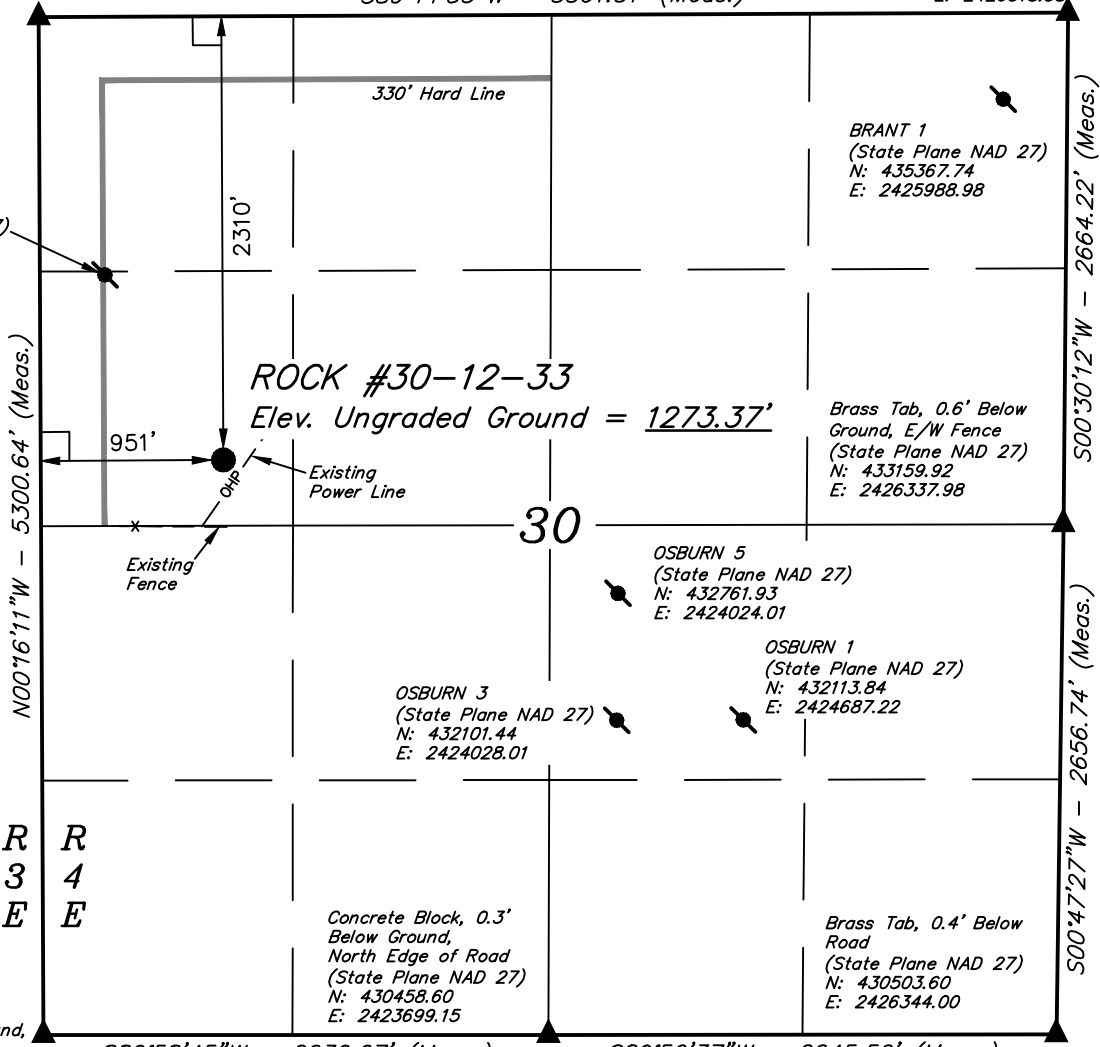
Brass Tab, 0.4' Below  
Road  
(State Plane NAD 27)  
N: 430503.60  
E: 2426344.00

Rebar, 0.3' Below Ground,  
(State Plane NAD 27)  
N: 430415.48  
E: 2421069.16

S89°58'45"W - 2630.67' (Meas.)

S89°56'37"W - 2645.56' (Meas.)

S89°44'53"W - 5361.31' (Meas.)



R  
3  
E

R  
4  
E



<b>NAD 83 (SURFACE LOCATION)</b>
LATITUDE = 37°50'52.64" (37.847956)
LONGITUDE = 97°02'20.07" (97.038908)
<b>NAD 27 (SURFACE LOCATION)</b>
LATITUDE = 37°50'52.58" (37.847939)
LONGITUDE = 97°02'18.95" (97.038597)
<b>STATE PLANE NAD 27</b>
N: 433423.97 E: 2421958.05

### CERTIFICATE

THIS IS TO CERTIFY THAT THE ABOVE PLAT WAS PREPARED FROM FIELD NOTES OF ACTUAL SURVEYS MADE BY ME OR UNDER MY SUPERVISION AND THAT THE SAME ARE TRUE AND CORRECT TO THE BEST OF MY KNOWLEDGE AND BELIEF.



### BASIS OF BEARINGS

BASIS OF BEARINGS IS A G.P.S. OBSERVATION

### BASIS OF ELEVATION

BENCH MARK (EL DORADO) LOCATED IN THE SE 1/4 OF SECTION 3, T26S, R5E, 6TH P.M., TAKEN FROM THE ELDORADO, QUADRANGLE, KANSAS, 7.5 MINUTE QUAD. TOPOGRAPHIC MAP) PUBLISHED BY THE UNITED STATES DEPARTMENT OF THE INTERIOR, GEOLOGICAL SURVEY. SAID ELEVATION OBTAINED FROM THE NGS DATA SHEET NAVD 88 IS 1344.12 FEET.

Source Energy Midcon, LLC

**ROCK #30-12-33**  
SW 1/4 NW 1/4, SECTION 30, T25S, R4E, 6th P.M.  
BUTLER COUNTY, KANSAS

SURVEYED BY: J.P., C.B.	SURVEY DATE: 07-10-14
DRAWN BY: S.S.	DATE DRAWN: 07-14-14
SCALE: 1" = 1000'	REVISED: 07-16-14

## WELL LOCATION PLAT



**UELS, LLC**  
Corporate Office \* 85 South 200 East  
Vernal, UT 84078 \* (435) 789-1017

