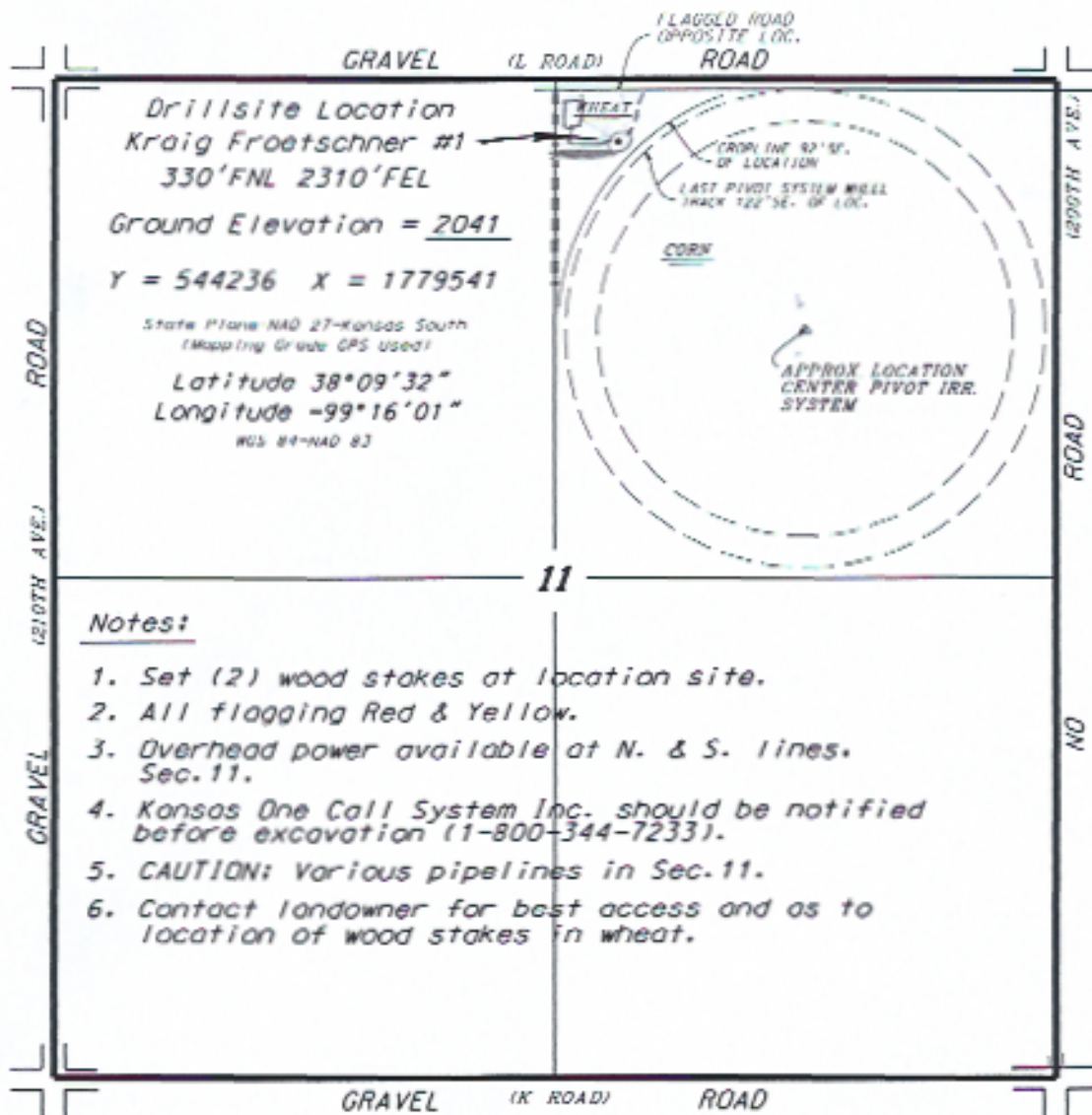


PROLIFIC RESOURCES, LLC
 KRAIG FROETSCHNER LEASE
 NE 1/4, SECTION 11, T22S, R18W
 PAWNEE COUNTY, KANSAS



*Ingress and egress to location as shown on this plot is for usage only and may not be legally opened for public use. Contact landowner, tenant and county road department for access.



* Controlling data is based upon the best maps and photographs available to us and upon a regular section of land containing 400 acres.
 * Approximate section lines were determined using the usual standards of care of oilfield engineers practicing in the state of Kansas. The section corners, which establish the precise section lines, were not necessarily located, and the exact location of the drillsite location in the section is not guaranteed. Therefore, the user(s) assuming this service are accepting this plot and all other services arising thereon agree to hold Central Kansas Oilfield Services, Inc., its officers and employees harmless from all losses, costs and expenses and hold any liability released from any liability from incidental or consequential damages.
 * Elevations derived from National Geodetic Vertical Datum.

Date July 3, 2014