

MURFIN DRILLING CO.

HOBBS # 2-2

SALINE VALLEY

231D' FNL, 1648' FNL

FIELD NO. 2

TRAGED

KANSAS

MORGAN MUD INC.

MURFIN DRILLING CO. RIG # 214

31 MAR 64

7 APRIL 64

TESTING RECORD:

TRILABITE TESTING CO.

PIONEER ENERGY SER.

DIL

4029

4027

MEL / CDL

MEL / BHS

ANHYDRITE - TOP

ANHYDRITE - BASE

TOPEKA

DEER CREEK

LECOMPTON

DREAD

HEEBNER

TORONTO

LANRING

STARK

MARMATON

TOTAL DEPTH

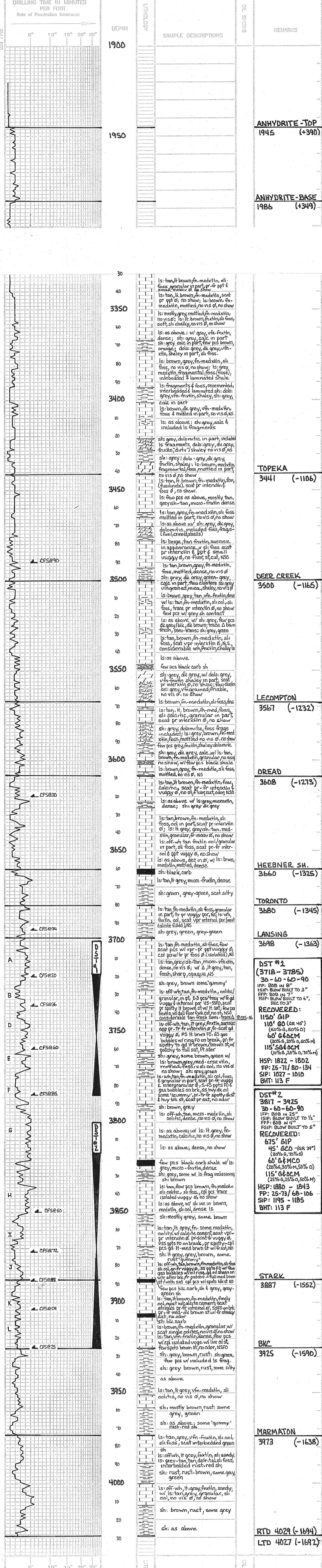
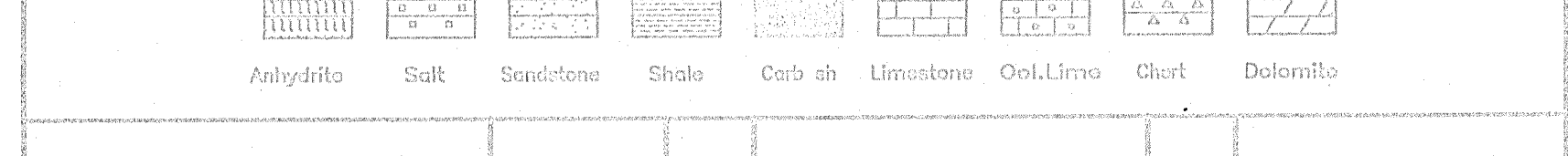
No.	Interval	Depth	Pressure	Temperature	Remarks
1	3785 - 3811	25'-71'	1027#	80°-94°	1150' GIP, 110' 60', 60' G6CM, 115' 64DCM
2	3811 - 3925	25'-73' to 30°	1195#	65°-106°	675' GIP, 45' 60', 60' M60, 115' 64DCM

NO.	SIZE	WEIGHT	TYPE	LENGTH	CUT	FEET	HOURS	PIPE STRAP	DEVIATION SURVEYS
1	1 1/2"	REED	GAUC	219	219	3	3	@ 2025' - 271' SHORT	@ 210' - 140'
2	7/8"	HTC	GAUC	4029	3810	82 1/2	2	@ 4029' - 112'	@ 4029' - 112'

FORMATION	SAMPLE TYPE	ELECTRIC LOG TOP	SLUG-SEA	STRUCTURAL POSITION
ANHYDRITE - TOP	1945	1942	+393	+3
ANHYDRITE - BASE	1986	1982	+353	+3
TOPEKA	3441	3439	-1104	-6
DEER CREEK	3500	3498	-1153	-7
LECOMPTON	3567	3564	-1229	-5
DREAD	3660	3656	-1271	-7
HEEBNER	3680	3678	-1321	-3
TORONTO	3680	3678	-1343	-4
LANRING	3698	3694	-1359	-3
STARK	3887	3884	-1549	-7
MARMATON	3973	3972	-1587	-7
TOTAL DEPTH	4029	4027	-1692	-7

REFERENCE WELL FOR STRUCTURE: MURFIN DRILLING CO., HOBBS # 1-2, 1111' FNL, 1648' FNL, SEC 2-11S-24W, T8E40D QTY, KS

LEGEND



FORMATION	DEPTH	REMARKS
ANHYDRITE - TOP	1945 (+390)	
ANHYDRITE - BASE	1986 (+349)	
TOPEKA	3441 (-1106)	
DEER CREEK	3500 (-1165)	
LECOMPTON	3567 (-1232)	
DREAD	3608 (-1273)	
HEEBNER SH.	3660 (-1325)	
TORONTO	3680 (-1345)	
LANRING	3698 (-1363)	
DST #1 (3718 - 3785)	30-60-60-90	1150' GIP, 110' 60', 60' G6CM, 115' 64DCM
DST #2 (3817 - 3925)	30-60-60-90	675' GIP, 45' 60', 60' M60, 115' 64DCM
STARK	3887 (-1552)	
BKC	3925 (-1590)	
MARMATON	3973 (-1638)	
RTD 4029 (-1694)		
LTD 4027 (-1692)		