



**COBALT ENERGY LLC**  
 OIL & NATURAL GAS

**GEOLOGIST'S REPORT**  
 DRILL TIME &  
 SAMPLE LOG

COMPANY **COBALT ENERGY LLC**  
 LEASE **Wasinger Trust 'A' #1-21**  
 FIELD **Wildcat**  
 LOCATION **863' FSL & 1711' FWL**  
 SEC. **21** TWP. **8S** RGE. **22W**  
 COUNTY **Graham** STATE **KS**  
 CONTRACTOR **Martin Drilling Co., Inc. Rig #24**  
 SPUD **6/4/14** COMP **6/10/14**  
 RTD **3710'** LTD **3707'**  
 MUD UP **2939'** TYPE MUD **Chemical**  
 SAMPLES SAVED FROM **3200'** TO **RTD**  
 DRILLING TIME KEPT FROM **3200'** TO **RTD**  
 SAMPLES EXAMINED FROM **3300'** TO **RTD**  
 GEOLOGICAL SUPERVISION FROM **3367'** TO **RTD**  
 GEOLOGIST ON WELL **Corey N. Baker**  
 FORMATION TOPS **ELECTRIC LOG**  
 Anhydrite **1775 (+414)**  
 Base of Anhydrite **1810 (+379)**  
 Heebner **3406 (-1217)**  
 Lansing **3441 (-1252)**  
 Stark **3617 (-1428)**  
 BKC **3654 (-1465)**  
 LTD **3707 (-1518)**

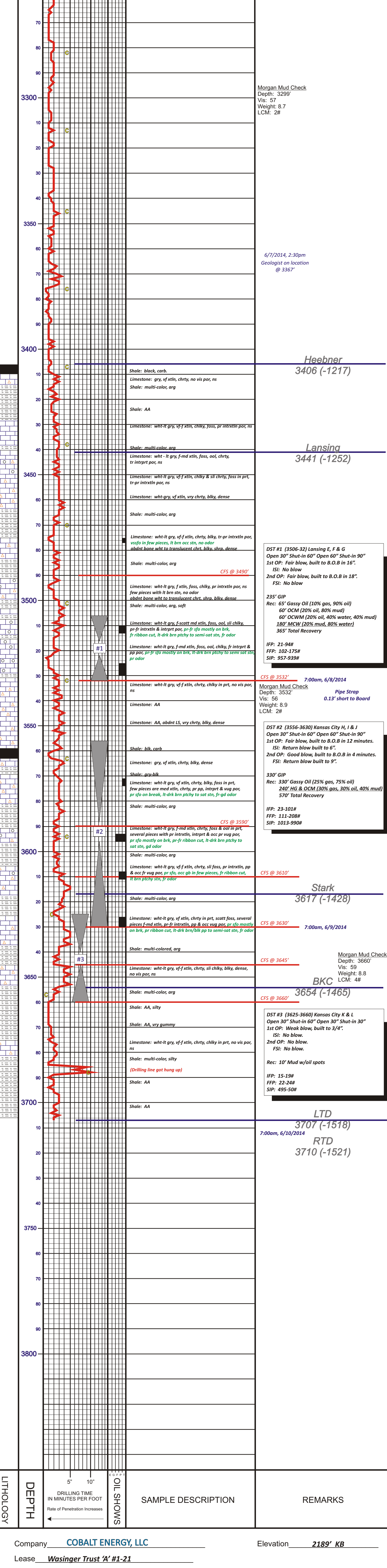
ELEVATIONS  
 KB **2189'**  
 DF \_\_\_\_\_  
 GL **2184'**  
 Measurements Are All From **KB**  
**CASING**  
 Conductor **NA**  
 Surface **8 5/8" @ 221'**  
 Production **4 1/2" @ 3686'**  
**Electrical Surveys**  
 Dual Induction/Neutron Density  
 Microlog, Sonic  
 Pioneer Energy Services

REMARKS **Based on the results of DST #2, 4 1/2" casing was set to further test the productive potential of the Wasinger Trust 'A' #1-21.**

Drill Stem testing by Tate Lang of Trilobite Testing.  
 Respectfully Submitted,  
 Corey Baker  
 Vice President - Exploration  
 API #15-065-24046-0000

**LEGEND**

Anhydrite	Sandstone	Limestone	Shale	Carb Sh	Cherty LS	Chert	Dolomite



**DEPTH** (ft): 3700, 3750, 3800

**LITHOLOGY**: Anhydrite, Sandstone, Limestone, Shale, Carb Sh, Cherty LS, Chert, Dolomite

**SAMPLE DESCRIPTION**: Includes sample numbers (e.g., 3707, 3710) and lithological notes.

**REMARKS**: Includes 'LTD 3707 (-1518)', 'RTD 3710 (-1521)', and '7:00am, 6/10/2014'.

Company **COBALT ENERGY, LLC** Elevation **2189' KB**  
 Lease **Wasinger Trust 'A' #1-21**  
 Location **863' FSL & 1711' FWL** SEC. **21** TWP. **8S** RGE. **22W**  
 County **Graham** State **Kansas**