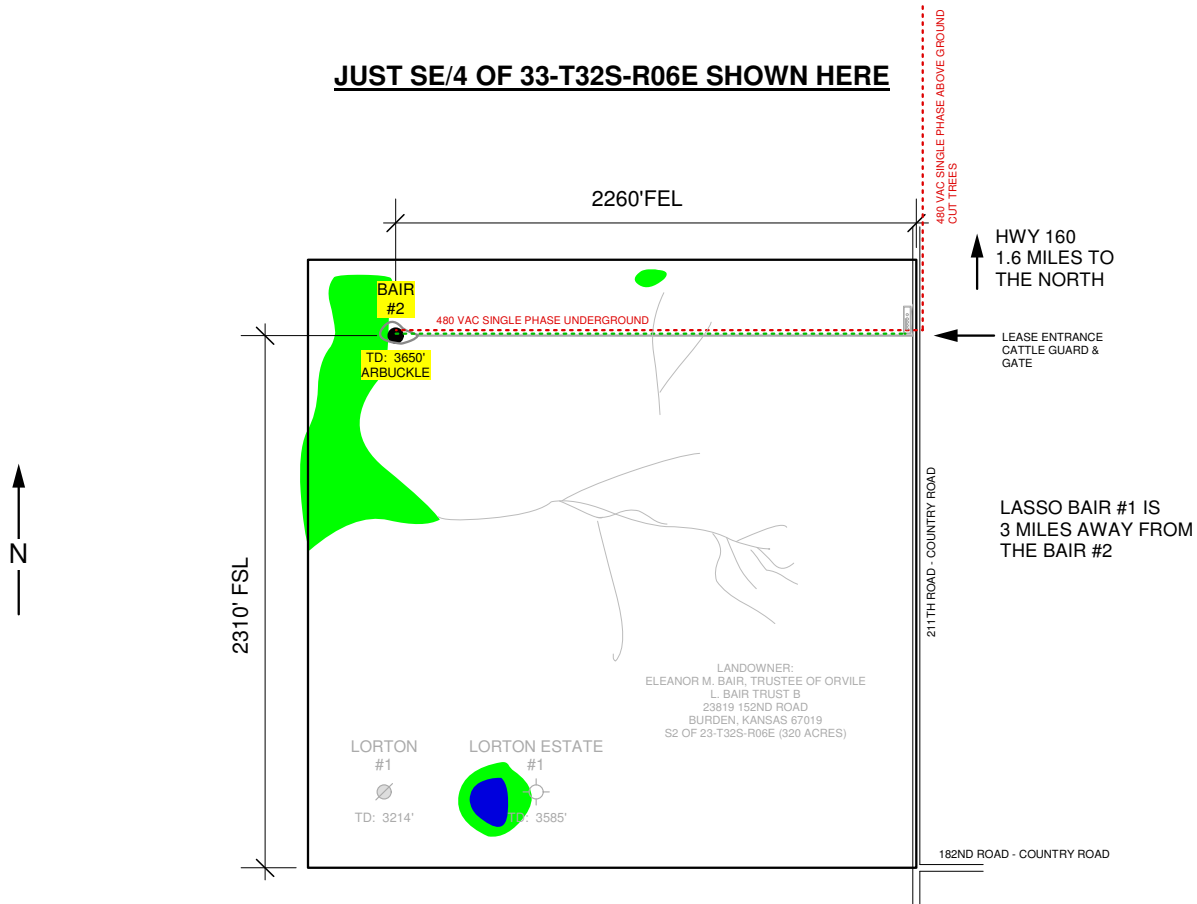


LASSO ENERGY LLC BAIR 2 07/22/2014
 OPERATOR LEASE WELL NO. DATE

COWLEY KANSAS 33 32S 06E
 COUNTY STATE S T R

1322' 2310' FNL, 990' FWL OF SEC
 ELEVATION LOCATION
 EST.

JUST SE/4 OF 33-T32S-R06E SHOWN HERE



LASSO BAIR LEASE

COWLEY COUNTY, KANSAS
 WILSON FIELD
 SE/4 OF 33-T32S-R6E (SHOWN)
 1240 GROSS ACRES
 NRI: 82.33
 HELD BY PRODUCTION

LASSO BAIR LEASE DESCRIPTION:
 NW/4 OF 11-T32S-R6E
 SE/4 OF 14-T32S-R6E
 S2 OF 23-T32S-R6E
 NW/4 OF 26-T32S-R6E
 NE/4 OF NE/4 & S2 OF NE/4 & SE/4 OF NW/4 & E2 OF SE/4 OF 27-T32S-R6E
 NE/4 OF NE/4 OF 34-T32S-R6E
 SE/4 OF 33-T32S-R6E

- 480 VAC SINGLE PHASE
- 3" PVC WATER DISPOSAL LINE
- 3" PVC LEAD (OIL & WATER) LINE
- LEASE ROAD

06/17/2013
 SURVEYED