

OPERATOR

Company: SANDLIN OIL CORPORATION
 Address: 621 17TH ST STE 2055
 DENVER, COLORADO
 80293-2001
 Contact Geologist: GARY SANDLIN
 Contact Phone Nbr: 303-292-3313
 Well Name: BROWN ETAL #1
 Location: SW NE SW NE S17 T10S R16W
 API: 15-163-24,233-00-00
 Pool:
 State: KANSAS
 Field: WILDCAT
 Country: USA

Scale 1:240 Imperial

Well Name: BROWN ETAL #1
 Surface Location: SW NE SW NE S17 T10S R16W
 Bottom Location:
 API: 15-163-24,233-00-00
 License Number: 6677
 Spud Date: 7/11/2014 Time: 2:28 PM
 Region: ROOKS COUNTY
 Drilling Completed: 7/18/2014 Time: 6:00 AM
 Surface Coordinates: 1800 FNL & 1825 FEL
 Bottom Hole Coordinates:
 Ground Elevation: 2057.00ft
 K.B. Elevation: 2063.00ft
 Logged Interval: 2900.00ft To: 3650.00ft
 Total Depth: 3650.00ft
 Formation: ARBUCKLE
 Drilling Fluid Type: CHEMICAL / FRESH WATER GEL

SURFACE CO-ORDINATES

Well Type: Vertical
 Longitude: -99.1286511
 Latitude: 39.1857911
 N/S Co-ord: 1800 FNL
 E/W Co-ord: 1825 FEL

LOGGED BY

Company: SOLUTIONS CONSULTING, INC.
 Address: 108 W 35TH
 HAYS, KS 67601
 Phone Nbr: (785) 639-1337
 Logged By: GEOLOGIST Name: STEVE REED / HERB DEINES

CONTRACTOR

Contractor: ROYAL DRILLING, INC.
 Rig #: 1
 Rig Type: MUD ROTARY
 Spud Date: 7/11/2014 Time: 2:28 PM
 TD Date: 7/18/2014 Time: 6:00 AM
 Rig Release: 7/19/2014 Time: 12:00 PM

ELEVATIONS

K.B. Elevation: 2063.00ft Ground Elevation: 2057.00ft
 K.B. to Ground: 6.00ft

NOTES

FOLLOWING THE POSITIVE RESULTS OF DST #3 THE DECISION WAS MADE TO SET PRODUCTION CASING TO FURTHER TEST POTENTIAL TOPEKA ZONES. THE BROWN ETAL #1 RAN STRUCTURALLY VERY HIGH TO SURROUNDING WELLS, THIS PROVED A SEISMIC SUCCESS. THE HIGH STRUCTURE AND CLOSURE GIVES

THIS WELL CONSIDERABLE ADVANTAGE IN THIN ZONES. ALL NOTED OIL SHOWS SHOULD BE TREATED AS POTENTIAL ZONES AND TESTED ACCORDINGLY.

RESPECTFULLY SUBMITTED BY: STEVE REED

OPEN HOLE LOGGING PROVIDED BY: NABORS COMPLETION AND PRODUCTION SERVICES CO:
 DUAL INDUCTION LOG, COMPENSATED NEUTRON/DENSITY POROSITY LOG, AND MICRORESISTIVITY LOGS WERE PERFORMED

DRILL STEM TESTING PROVIDED BY: SUPERIOR TESTERS
 TWO (2) CONVENTIONAL TESTS AND ONE (1) STRADDLE TEST WERE COMPLETED

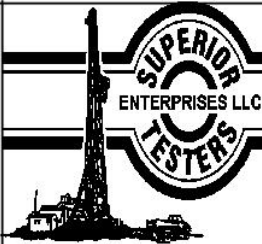
FORMATION TOPS AND DAILY ACTIVITY SUMMARY

	WELL NAME		COMPARISON WELL	COMPARISON WELL
	BROWN ETAL #1		GANOUNG CHAR. A #1-7	DOUGHERTY #1
	API: 15-163-24233		API: 15-163-24160	API: 15-163-20272
FORMATION	SAMPLE TOPS	LOG TOPS	LOG TOPS (DATUM)	LOG TOPS (DATUM)
ANHYDRITE	1251' (+812)	802' (+964')	+807'	+806'
TOPEKA	2942' (-879')	2938' (-875')	-893'	-908'
HEEBNER	3173' (-1110')	3169' (-1106')	-1123'	-1136'
TORONTO	3193' (-1130')	3186' (-1123')	-1141'	-1155'
LKC	3215' (-1152')	3210' (-1147')	-1163'	-1176'
BKC	3459' (-1396')	3454' (-1391')	-1405'	-1440'
ARBUCKLE	3541' (-1478')	3532' (-1469')	-1537'	-1547'
RTD	3650' (-1587')	3645' (-1582')	-1600'	-1563'

SUMMARY OF DAILY ACTIVITY

- 7-11-14** R.U., spud
- 7-12-14** 650', LOC @ 710, 8 5/8" surface casing set at 1107.39' w/450 sxs 70/30, 2% gel, 3% cc, WOC
- 7-13-14** 1110', drilling
- 7-14-14** 2255', drilling
- 7-15-14** 2975', drilling, LOC @ 3111, 3119, and 3130, plugged bit with hulls, blew Kelly hose, TOWB, CFS @ 3142
- 7-16-14** 3250', drilling, CFS@ 3323, short trip (10 stands), TOWB, strap 3.14 short, survey 1°, DST #1 3312 to 3323, CFS @ 3368, CFS @3386, CFS @ 3410
- 7-17-14** 3410', mini trip (5 stands), CTCH, TOWB, DST #2 3334 to 3410, drilling, CFS @ 3556, TD @ 3650, CFS
- 7-18-14** 3650' mini trip (7 stands), CTCH, TOWB for logs, logging, TIWT, DST #3 straddle 3160 to 3225, prepare to set production casing.
- 7-19-14** release rig

DST #1 SUMMARY

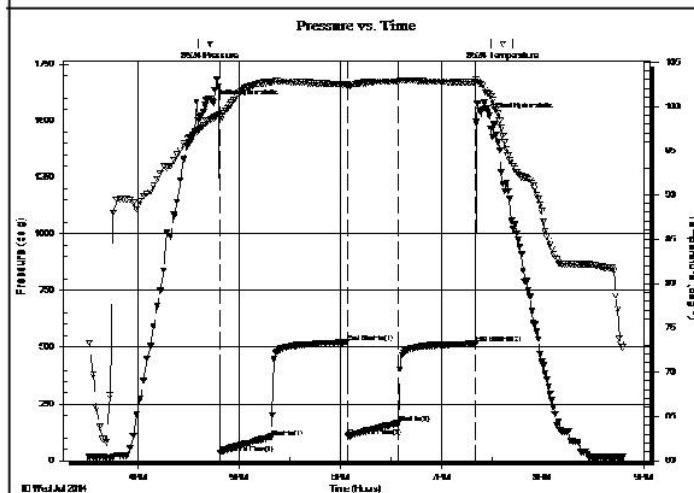
	DRILL STEM TEST REPORT	
	Sandlin Oil Corporation 621 17th St STE 2055 Denver Co, 80293-2001 ATTN: Steve Reed	17/10s/16w/Rooks Brown Etal #1 Job Ticket: 18598 DST#: 1 Test Start: 2014.07.16 @ 15:30:00

GENERAL INFORMATION:

Formation: Kansas City "G"	Test Type: Conventional Bottom Hole (Initial)
Deviated: No Whipstock: ft (KB)	Tester: Shane Konzem
Time Tool Opened: 16:48:30	Unit No: 3330/126/Great Bend
Time Test Ended: 20:47:30	Reference Elevations: 2055.00 ft (KB)
Interval: 3312.00 ft (KB) To 3323.00 ft (KB) (TVD)	2049.00 ft (CF)
Total Depth: 3323.00 ft (KB) (TVD)	KB to GR/CF: 6.00 ft
Hole Diameter: 7.88 inches Hole Condition: Poor	

Serial #: 8524 Inside	
Press@RunDepth: 164.98 psig @ 3319.00 ft (KB)	Capacity: 5000.00 psig
Start Date: 2014.07.16 End Date: 2014.07.16	Last Calib.: 2014.07.16
Start Time: 15:31:00 End Time: 20:47:30	Time On Btm: 2014.07.16 @ 16:44:30
	Time Off Btm: 2014.07.16 @ 19:28:30

TEST COMMENT: 1st Open/ 30 Minutes. Good blow built to bottom of 5 gallon bucket in 15 minutes and 30 seconds.
 1st Shut In/ 45 Minutes. Weak surface blow back.
 2nd Open/ 30 Minutes. Good blow built to bottom of 5 gallon bucket in 19 minutes and 50 seconds.
 2nd Shut In/ 45 Minutes. Weak surface blow back.



PRESSURE SUMMARY

Time (Min.)	Pressure (psig)	Temp (deg F)	Annotation
0	1579.29	98.62	Initial Hydro-static
4	33.82	98.77	Open To Flow (1)
35	104.94	102.75	Shut-In(1)
80	521.63	102.46	End Shut-In(1)
80	106.79	102.35	Open To Flow (2)
110	164.98	102.86	Shut-In(2)
156	517.27	102.72	End Shut-In(2)
164	1521.94	101.32	Final Hydro-static

Recovery

Length (ft)	Description	Volume (bbl)
0.00	382 feet 100% gas	0.00
10.00	100% Clean oil	0.14
30.00	40% Mud, 55% w ater, 5% oil	0.42
63.00	40% mud, 60% w ater	0.88

Gas Rates

Choke (inches)	Pressure (psig)	Gas Rate (Mcf/d)

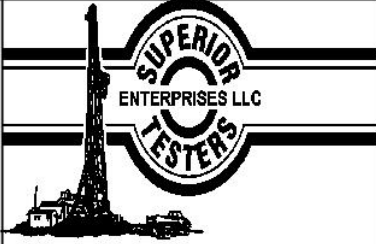
63.00	20% mud, 80% w ater	0.88
63.00	10% mud, 90%w ater	0.88

Superior Testers Enterprises LLC

Ref. No: 18598

Printed: 2014.07.16 @ 22:21:57

DST #2 SUMMARY

	DRILL STEM TEST REPORT	
	Sandlin Oil Corporation 621 17th St STE 2055 Denver Co, 80293-2001 ATTN: Steve Reed	17/10s/16w/Rooks Brown Etal #1 Job Ticket: 18599 DST#: 2 Test Start: 2014.07.17 @ 09:50:00

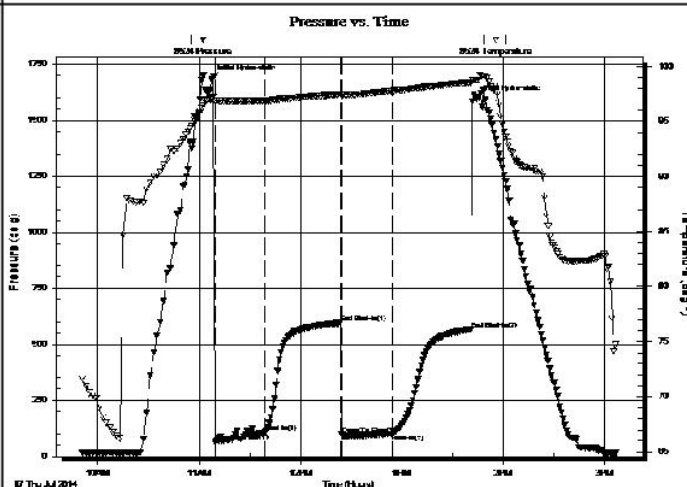
GENERAL INFORMATION:

Formation: **Kansas City "H-J"**
 Deviated: No Whipstock: ft (KB)
 Time Tool Opened: 11:09:30
 Time Test Ended: 15:06:30
 Interval: **3334.00 ft (KB) To 3410.00 ft (KB) (TVD)**
 Total Depth: 3410.00 ft (KB) (TVD)
 Hole Diameter: 7.88 inches Hole Condition: Poor
 Test Type: Conventional Bottom Hole (Initial)
 Tester: Shane Konzem
 Unit No: 3330/126/Great Bend
 Reference Elevations: 2055.00 ft (KB)
 2049.00 ft (CF)
 KB to GR/CF: 6.00 ft

Serial #: 8524

Press@RunDepth: 101.57 psig @ ft (KB) Capacity: 5000.00 psig
 Start Date: 2014.07.17 End Date: 2014.07.17 Last Calib.: 2014.07.17
 Start Time: 09:51:00 End Time: 15:06:30 Time On Btm: 2014.07.17 @ 11:07:30
 Time Off Btm: 2014.07.17 @ 13:44:30

TEST COMMENT: 1st Open/ 30 Min utes. Fair blow built to 6 inches into bucket of water.
 1st Shut In/ 45 Minutes. No blow back.
 2nd Open/ 30 Minutes. Fair blow built to 5 inches into bucket of water.
 2nd Shut In/ 45 Minutes. No blow back.



PRESSURE SUMMARY

Time (Min.)	Pressure (psig)	Temp (deg F)	Annotation
0	1684.34	97.05	Initial Hydro-static
2	65.70	96.91	Open To Flow (1)
32	107.09	96.88	Shut-In(1)
76	594.55	97.47	End Shut-In(1)
77	94.35	97.36	Open To Flow (2)
107	101.57	97.77	Shut-In(2)
154	567.66	98.53	End Shut-In(2)
157	1596.35	98.75	Final Hydro-static

Recovery

Length (ft)	Description	Volume (bbl)
1.00	100% clean oil	0.01
29.00	Gassy oil, cut Mud	0.41
0.00	10% Gas, 17.5% Oil, 70% Mud, 2.5% w a	0.00
63.00	Oil cut watery mud	0.88
0.00	2.5% Oil, 65% Mud, 65% Mud	0.00

Gas Rates

Choke (inches)	Pressure (psig)	Gas Rate (Mcf/d)


0.00	Chloride recov, 28000 ppm	0.00
------	---------------------------	------

Superior Testers Enterprises LLC

Ref. No: 18599

Printed: 2014.07.17 @ 16:50:22

DST #3 SUMMARY

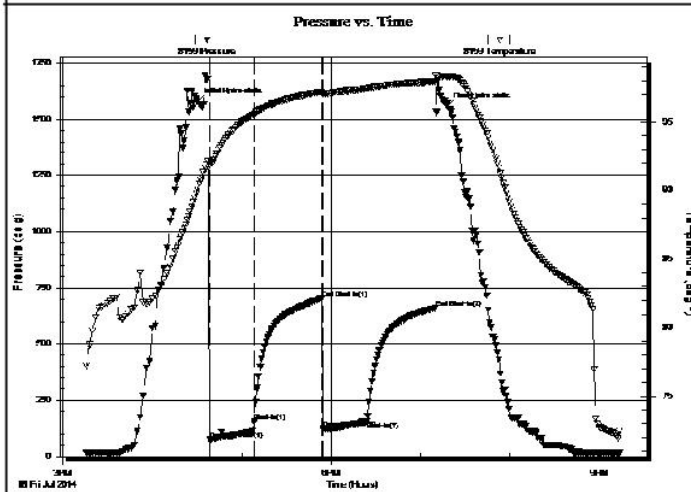
	DRILL STEM TEST REPORT	
	Sandlin Oil Corporation 621 17th St STE 2055 Denver Co, 80293-2001 ATTN: Steve Reed	17/10s/16w/Rooks Brown Etal #1 Job Ticket: 18600 DST#: 3 Test Start: 2014.07.18 @ 15:15:00

GENERAL INFORMATION:

Formation: Toronto	Test Type: Conventional Straddle (Initial)
Deviated: No Whipstock: ft (KB)	Tester: Shane Konzem
Time Tool Opened: 16:38:30	Unit No: 3330/126/Great Bend
Time Test Ended: 21:14:00	Reference Elevations: 2055.00 ft (KB)
Interval: 3160.00 ft (KB) To 3225.00 ft (KB) (TVD)	2049.00 ft (CF)
Total Depth: 3645.00 ft (KB) (TVD)	KB to GR/CF: 6.00 ft
Hole Diameter: 7.88 inches Hole Condition: Poor	

Serial #: 8159 Inside	Capacity: 5000.00 psig
Press@RunDepth: 154.63 psig @ 3223.35 ft (KB)	Last Calib.: 2014.07.18
Start Date: 2014.07.18 End Date: 2014.07.18	Time On Btm: 2014.07.18 @ 16:30:30
Start Time: 15:15:00 End Time: 21:14:00	Time Off Btm: 2014.07.18 @ 19:17:30

TEST COMMENT: 1st Open/ 30 Minutes. Good blow built to bottom of 5 gallon bucket in 8 minutes.
 1st Shut In/ 45 Minutes. Weak surface blow back.
 2nd Open/ 30 Minutes. Good blow built to bottom of 5 gallon bucket in 3 minutes and 30 seconds.
 2nd Shut In/ 45 Minutes. weak surface blow back.



PRESSURE SUMMARY			
Time (Min.)	Pressure (psig)	Temp (deg F)	Annotation
0	1577.88	90.15	Initial Hydro-static
8	75.43	91.88	Open To Flow (1)
38	153.57	95.59	Shut-In(1)
84	704.09	97.18	End Shut-In(1)
84	123.98	97.04	Open To Flow (2)
114	154.63	97.42	Shut-In(2)
160	659.92	97.93	End Shut-In(2)
167	1557.12	98.29	Final Hydro-static

Recovery

Length (ft)	Description	Volume (bbl)
0.00	1850 foot 100% Gas	0.00
262.00	100% Clean gassy oil	3.68
0.00	Oil gravity was 40 corrected	0.00

Gas Rates

Choke (inches)	Pressure (psig)	Gas Rate (Mcf/d)

DST #3 PRESSURE VS TIME CHART

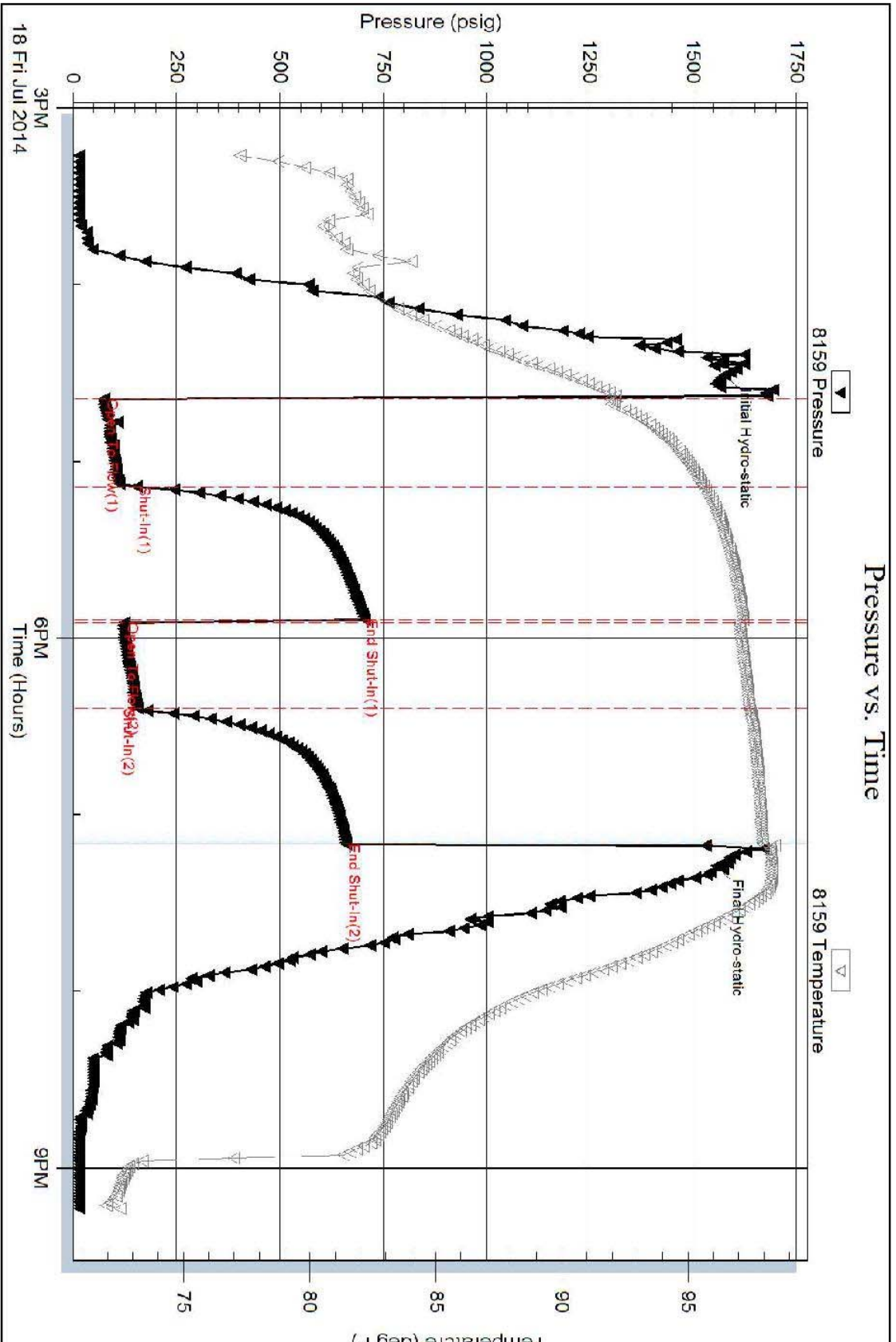
Serial #: 8159

Inside

Sandlin Oil Corporation

Brown Bal #1

DST Test Number: 3



Superior Testers Enterprises LLC

Ref. No: 18600

Printed: 2014.07.18 @ 22:32:06

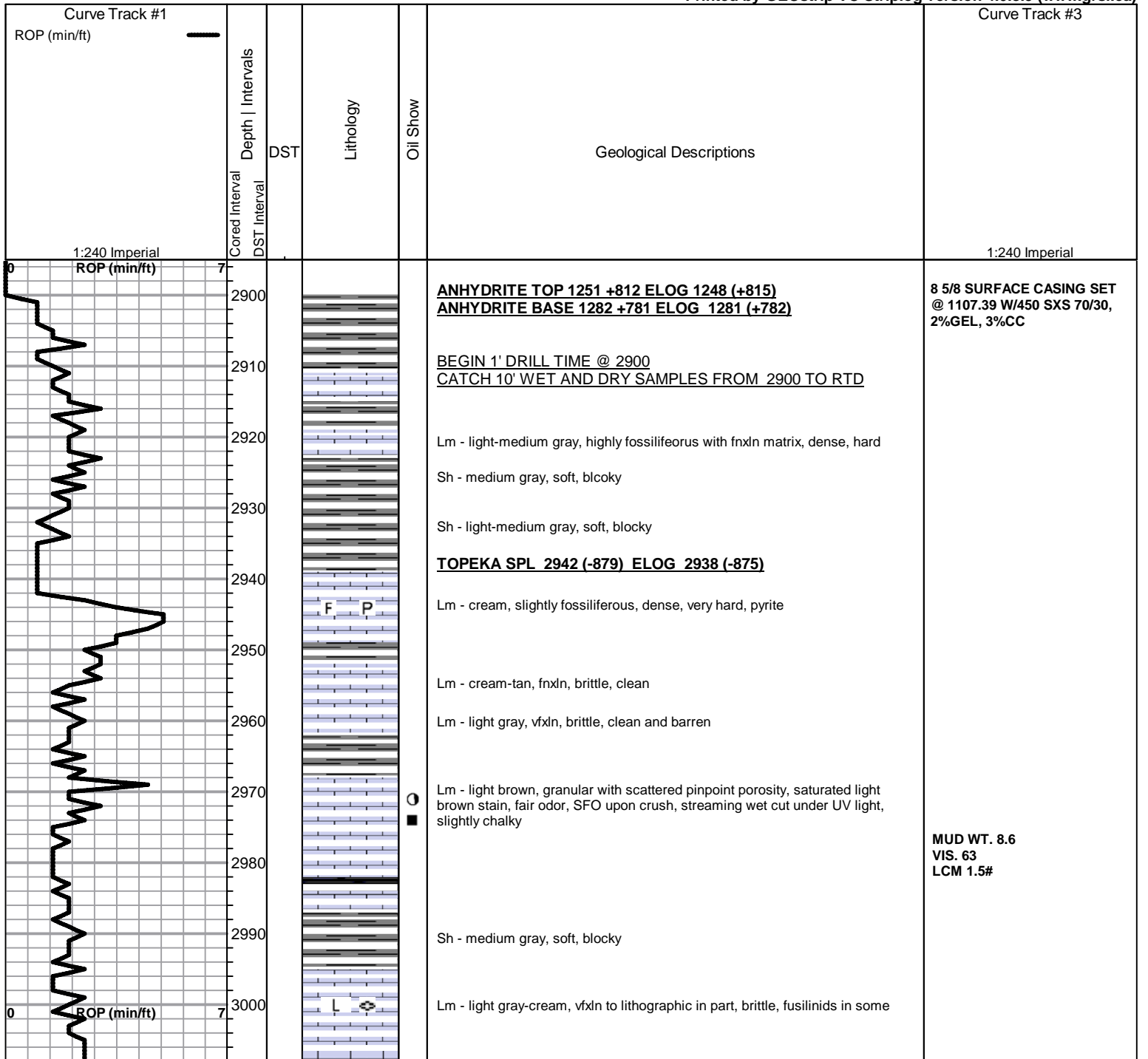
ROCK TYPES

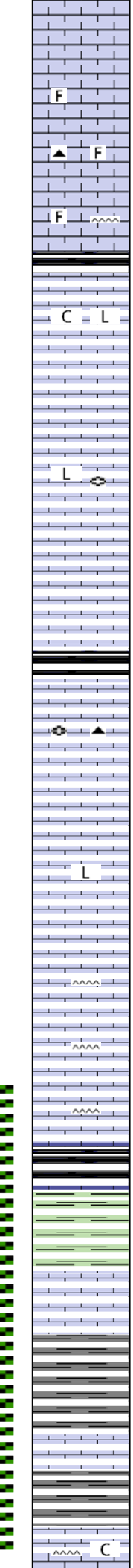
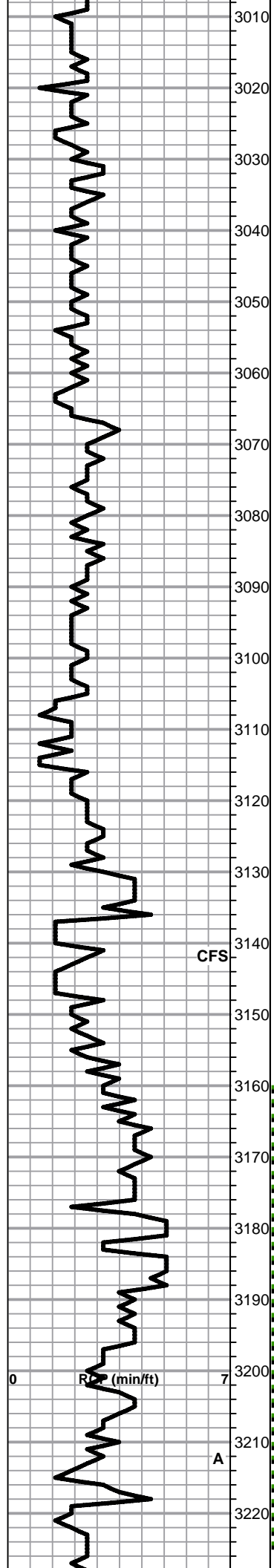


ACCESSORIES



Printed by GEOstrip VC Striplog version 4.0.8.9 (www.grsi.ca)





Lm - tan-light brown, fnxn with fossil fragments, mottled, dense, brittle, no shows

Lm - tan-cream, fnxn, slightly fossiliferous, brittle

Lm - tan-light gray, fnxn, dense, brittle, black fossiliferous chert

Lm - light gray, fossiliferous, brittle, cherty

Sh - black, carbonaceous, waxy, soft

Lm - tan, fnxn to lithographic in part, slightly chalky

Sh - medium gray, soft, fissile

Lm - tan-cream, vfxn to lithographic in some, dense, hard, brittle, fusilinids, bedded chalk in part

Lm - cream, vfxn, dense, very hard, bedded chalk, pyrite

Lm - cream, vfxn to lithographic, dense, brittle, bedded chalk

Sh - black, carbonaceous, waxy, soft

Lm - cream-light brown, fnxn, brittle, fusilinids, brown opaque chert

Lm - light brown-tan, fnxn, slightly fossiliferous, bedded chalk in part

Lm - medium brown, lithographic, dense, very hard

Lm - cream-light brown, slightly fossiliferous, granular, friable, no odor, no shows

Lm - tan-light brown, fine pinpoint porosity with light scattered stain, slight SFO upon crush, faint odor, slightly cherty

Lm - offwhite, vfxn, dense, hard, bedded chalk, cherty

Lm - light brown, fine interxn porosity, dense, very hard, cherty

HEEBNER SPL 3173 (-1110) ELOG 3169 (-1106)
 Sh - black, carbonaceous, waxy, fissile

Sh - greenish gray, soft, blocky, forming sticky clumps

TORONTO SPL 3193 (-1130) ELOG 3186 (-1123)
 Lm - bright white, fnxn, some chips with saturated light brown stain, fine pinpoint porosity with scattered vugs, strong streaming wet cut under UV light, NSFO, no odor

Sh - light gray, soft, blocky

LKC SPL 3215 (-1152) ELOG 3210 (-1147)
 Lm - mostly cream, fnxn, brittle, some with saturated light brown stain, fine pinpoint porosity, SFO upon crush, questionable odor

Lm - cream-tan, fnxn, brittle, cherty, chalky

MUD WT. 8.8
 VIS. 60
 LCM 1.5#

losing circulation, mix mud

losing circulation, mix mud

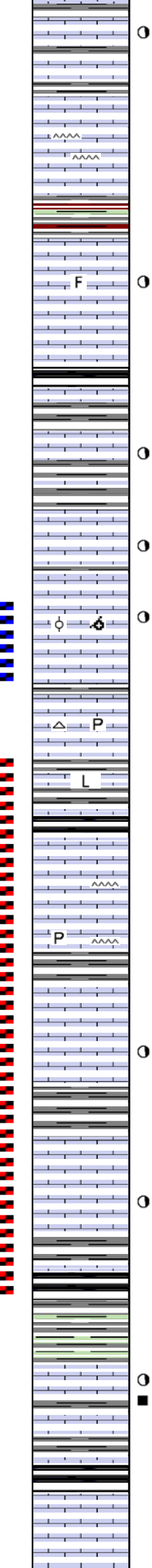
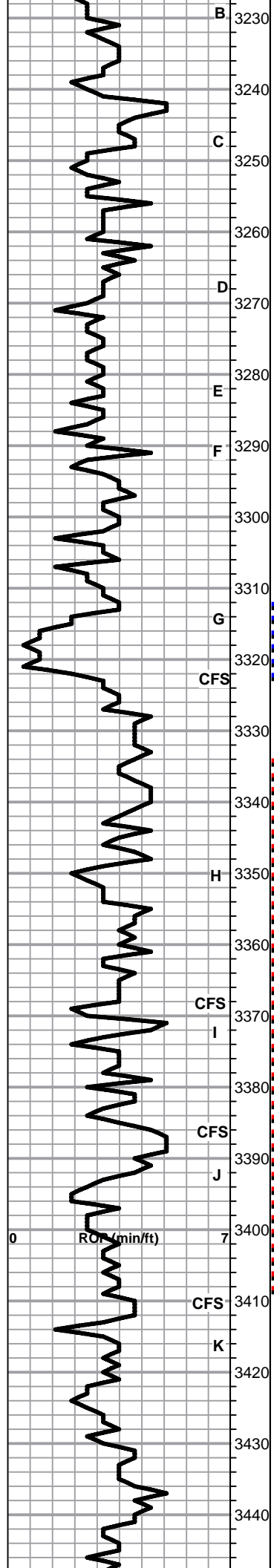
losing circulation, mix mud
 plugged bit, blew kelly hose

DST #3 STRADDLE
 3160 TO 3225
 SEE HEADER FOR TEST
 SUMMARY

CFS

R_{sp} (min/ft)

A



3230 Lm - cream-light brown, vfxln, dense, hard, some rare pinpoint porosity with scattered stain, NSFO, no odor
 3240
 3250 Lm - cream-light brown, fnxln, bedded chalk, cherty, no shows
 3260 Sh - medium gray/maroon/green, soft, blocky
 3270 Lm - offwhite, fossiliferous, scattered light brown stain, fine interxln porosity, NSFO, UV fluorescence, faint odor
 3280 Sh - black, carbonaceous, waxy, soft
 3290 Lm - buff-tan, vfxln, hard, scattered pinpoint porosity with slight scattered stain, NSFO, no odor
 3300 Sh - dark gray, soft, fissile
 3310 Lm - cream-tan, fnxln, brittle, some scattered pinpoint porosity with slight staining, NSFO, no odor
 3320 Lm - cream, oolitic/oomoldic with fine interxln porosity slightly vuggy with slight scattered stain, SFO upon crush, fair odor, strong streaming wet cut.
 3330 Lm - cream-tan, microxln, dense, very hard, white chert, pyrite, clean and barren
 3340 Lm - cream, lithographic, dense, hard, brittle
 3350 Sh - dark gray-black, carbonaceous, fissile, waxy
 3360 Lm - light-medium brown, microxln, dense, hard, cherty
 3370 Lm - light brown-cream, microxln, very hard, pyrite specks, no shows, cherty
 3380 Lm - tan, vfxln, very hard, bedded chalk, chert, orange and maroon shales
 3390 Lm - cream, slightly fossiliferous, fine interxln porosity with scattered vugs, scattered light golden brown stain, no odor, good streaming wet cut under UV light
 3400 Lm - cream-light brown, fnxln, hard, brittle
 3410 Lm - cream, slightly fossiliferous, fine interxln porosity, slightly scattered stain, SFO in some, good streaming wet cut, faint odor
 3420 Sh - black, carbonaceous, waxy, fissile
 3430 Sh - greenish gray, soft, blocky
 3440 Lm - cream, fossiliferous, fine interxln porosity, slight scattered golden brown stain, no odor, NSFO, good streaming wet cut, limited total porosity
 Sh - black, carbonaceous, firm fissile, copper specks
 Lm - light gray-light brown, fnxln, brittle, clean and barren

MUD WT. 8.8
VIS. 93
LCM 11#

DST #1 3312 TO 3323
SEE HEADER FOR TEST SUMMARY

DST #2 3334 TO 3410
SEE HEADER FOR TEST SUMMARY

MUD WT. 8.9
VIS. 53
LCM 8#

