



VINCENT OIL CORPORATION



Scale 1:240 Imperial

Well Name:	Smith 1-8	
Surface Location:	8-29S-22W	
Bottom Location:		
API:	15-057-20929	
License Number:		
Spud Date:	3/25/2014	Time: 11:00 AM
Region:		
Drilling Completed:	4/3/2014	Time: 7:46 PM
Surface Coordinates:	465 FNL & 1305 FWL	
Bottom Hole Coordinates:		
Ground Elevation:	2516.00ft	
K.B. Elevation:	2526.00ft	
Logged Interval:	4250.00ft	To: 5450.00ft
Total Depth:	0.00ft	
Formation:	MISS	
Drilling Fluid Type:		

OPERATOR

Company:	Vincent Oil Corporation	
Address:	155 N Market Ste. 700 Wichita, KS 67202	
Contact Geologist:	Dick Jordan	
Contact Phone Nbr:	316-262-35731	
Well Name:	Smith 1-8	
Location:	8-29S-22W	API: 15-057-20929
Pool:		Field:
State:	Kansas	Country:

CONTRACTOR

Contractor:	Val Energy, Inc.	
Rig #:	2	
Rig Type:	Rotary	
Spud Date:	3/25/2014	Time: 11:00 AM
TD Date:	4/3/2014	Time: 7:46 PM
Rig Release:	4/4/2014	Time: 2:15 PM

SURFACE COORDINATES

SURFACE CO-ORDINATES

Well Type: Vertical
 Longitude: -99.7526801 Latitude: 37.5403673
 N/S Co-ord: 465 FNL
 E/W Co-ord: 1305 FWL

ELEVATIONS

K.B. Elevation: 2526.00ft Ground Elevation: 2516.00ft
 K.B. to Ground: 10.00ft

CASING SUMMARY

	Surface	Intermediate	Main		
Bit Size	12.25 in				
Hole Size			7.88 in		
	Size	Set At	Type	# of Joints	Drilled Out At
Surf Casing	8.625 in	689 ft	23#	16	3/26/2014 6:00 AM
Int Casing					
Prod Casing	4.5 in	5446 ft	11.6#	124	

CASING SEQUENCE

Type	Hole Size	Casing Size	At
	0.00 in	0.00	0.00 ft

OPEN HOLE LOGS

Logging Company: Nabors Completion and Production Services Co.
 Logging Engineer: Jason Cappellucci
 Truck #: 4854
 Logging Date: 4/4/2014 Time Spent: 5
 # Logs Run: 4 # Logs Run Successful: 4

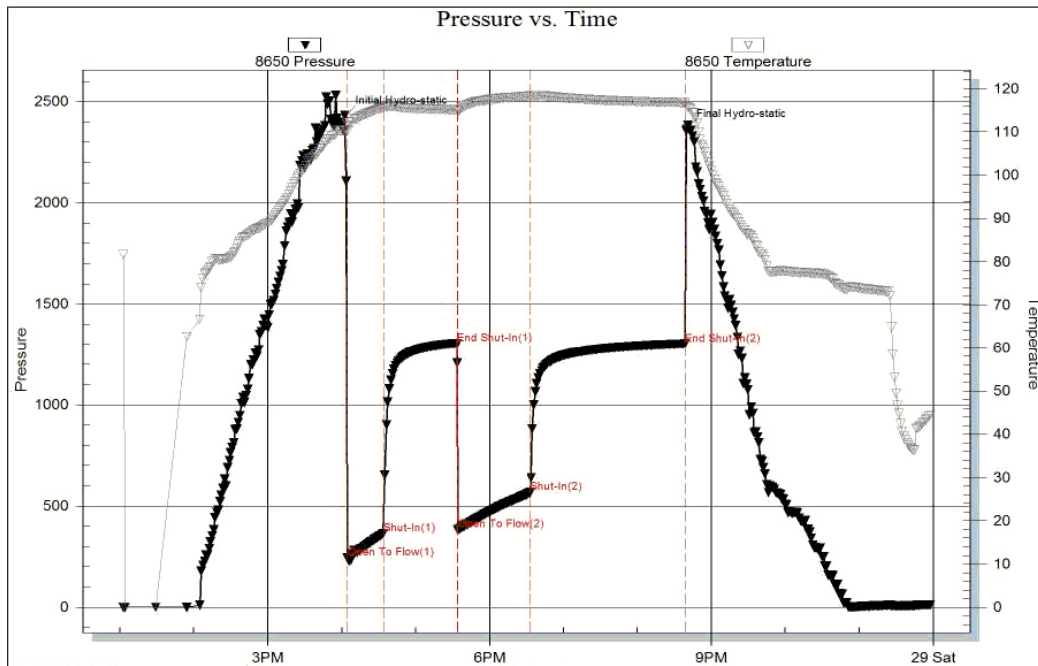
LOGS RUN

Tool	Logged Interval	Logged Interval	Hours	Remarks	Run #
Dual Induction	0.00ft	5450.00ft	2.00		1
CNDE/PE	4300.00ft	5450.00ft	2.00		1
Micro	4300.00ft	5450.00ft	3.00		2
Sonic	0.00ft	5450.00ft	3.00		2

LOGGING OPERATION SUMMARY

Date	From	To	Description Of Operation
4/7/2014	0.00ft	0.00ft	

Serial #: 8650 Outside Vincent Oil Corporation Frey #1-5 DST Test Number: 1

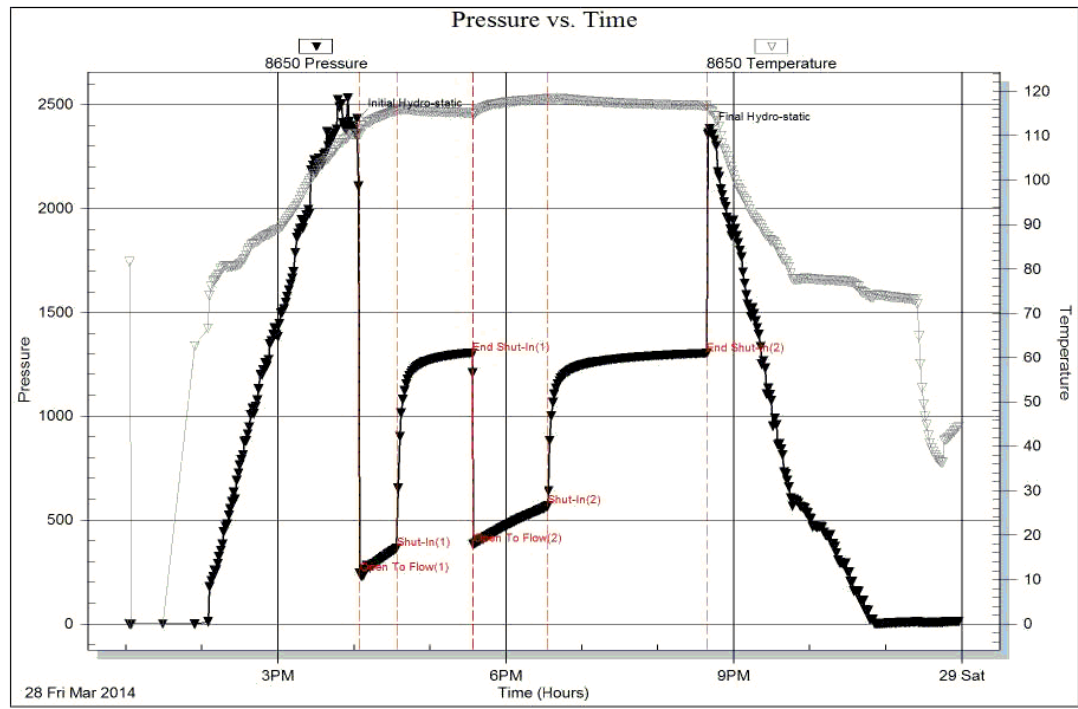


Serial #: 8650

Outside Vincent Oil Corporation

Frey #1-5

DST Test Number: 1



Trilobite Testing, Inc

Ref. No: 56458

Printed: 2014.04.02 @ 16:53:35

ROCK TYPES

- △△△△ Cht
- ▨ Dolsec
- ▨ Lmst fw7>
- ▨ Shblk
- Coal
- ▨ Lmst fw<7
- ▨ Shgy
- ▨ Shcol

ACCESSORIES

MINERAL

- ⊥ Calcareous
- ▲ Chert, dark
- ∩ Glauconite
- P Pyrite
- Sandy
- Silty
- △ Chert White

FOSSIL

- Crinoids
- F Fossils < 20%
- ⊕ Oolite

STRINGER

- ▨ Limestone
- ▨ Shale

TEXTURE

- C Chalky
- e Earthy

OTHER SYMBOLS

POROSITY TYPE

- x Intercrystalline
- φ Interoolitic
- V Vuggy
- P Pinpoint
- ∩ Moldic
- O Organic
- F Fracture
- e Earthy
- Fenestral

OIL SHOWS

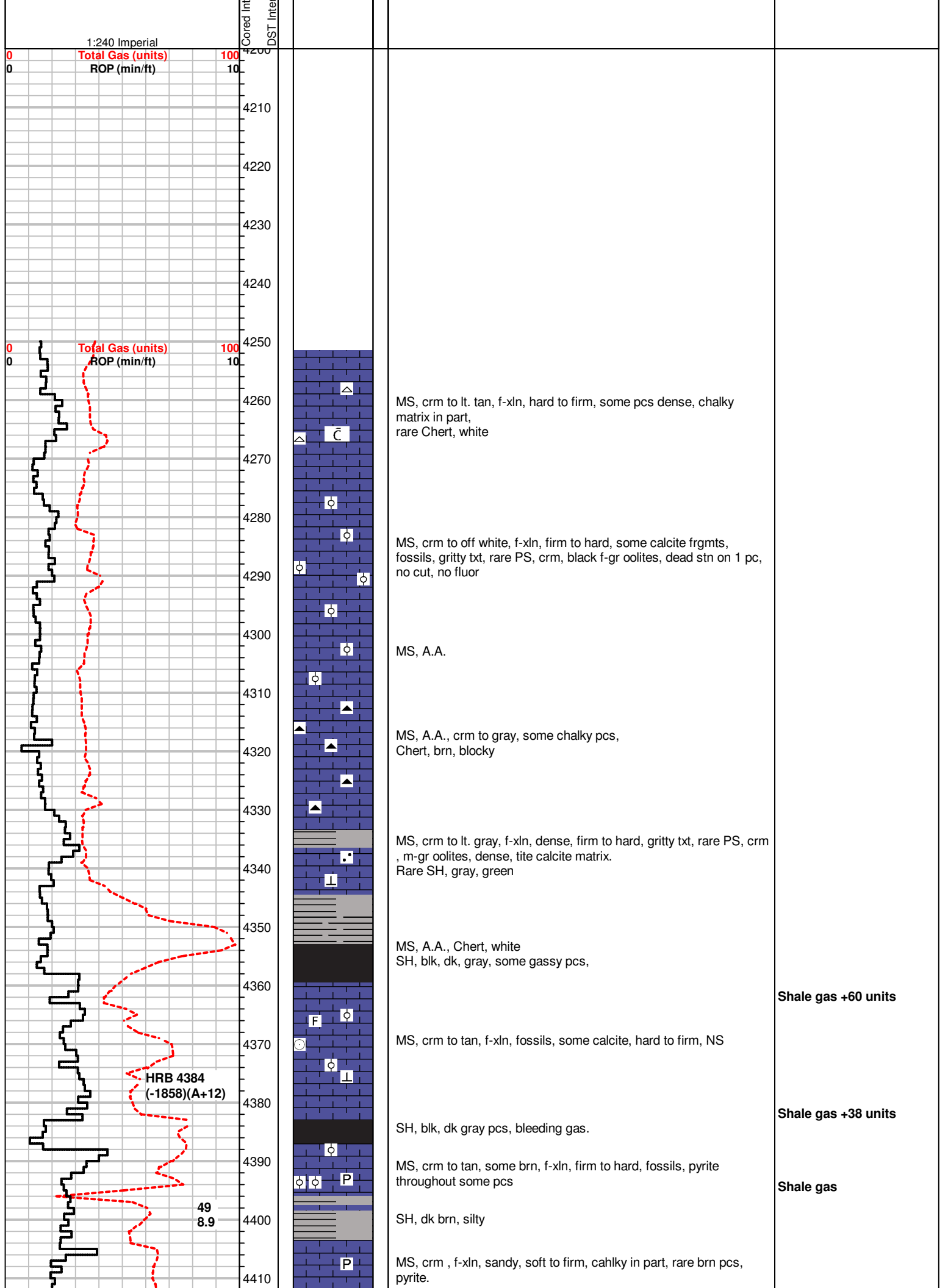
- Even Stn
- Spotted Stn 50 - 75 %
- Spotted Stn 25 - 50 %
- Spotted Stn 1 - 25 %
- Questionable Stn
- D Dead Oil Stn
- Fluorescence

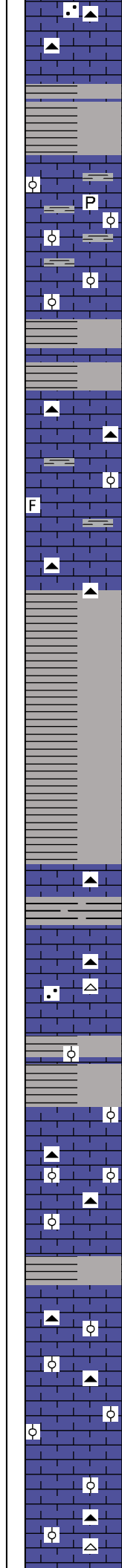
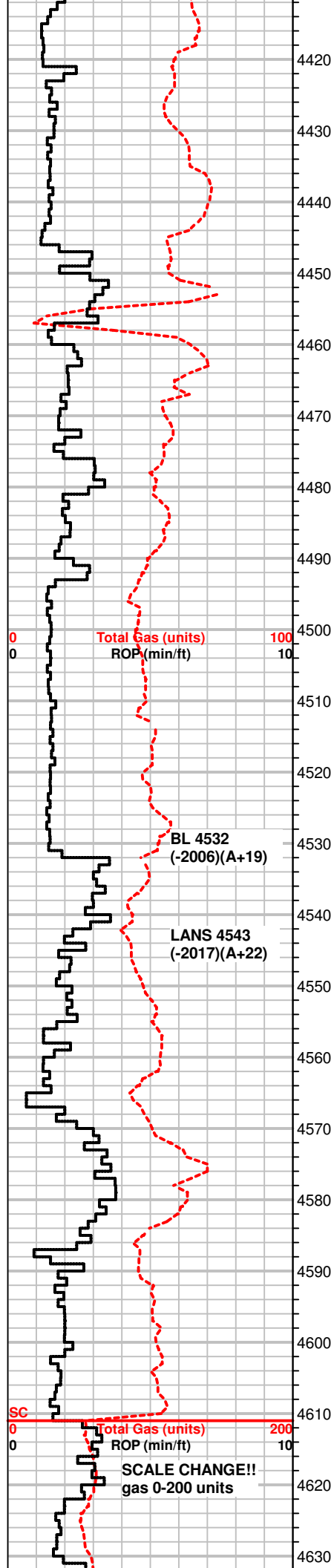
INTERVALS

- Core
- DST

Printed by GEOstrip VC Striplog version 4.0.7.0 (www.grsi.ca)

Curve Track #01		Depth Intervals	Porosity Types	Interpreted Lithology	Oil Shows	Geological Descriptions	Comment
Total Gas (units)	----						
ROP (min/ft)	—						





MS, gray to crm, m-xln, firm, some sandy pcs A.A.,
Chert, gray, white, wthrd pcs

SH, blk, gray,

MS-WS, crm to tan, f-xln to massive, rare f-oolitic pcs, hard to friable, Pyrite, dead wormy stn, no flour, no cut, NS

MS, A.A.

SH, gray, some silty

MS, crm to gray, f to m-xln, dense, vf pyrite inclusions
Chert, gray, brn, some SH, gray

MS, crm to brn, tan, f to m-xln, some mottled pcs, hard to firm, some fossilif., SH, gray

MS, crm to gray, f-xln, dense, some chalky pcs, mottled pcs throughout
Chert, gray

Sh, gray

SH, gray, brn

MS, crm to brn pcs, f-xln, hard, some sandy, rare f-oolitic pcs,
Chert, white, gray

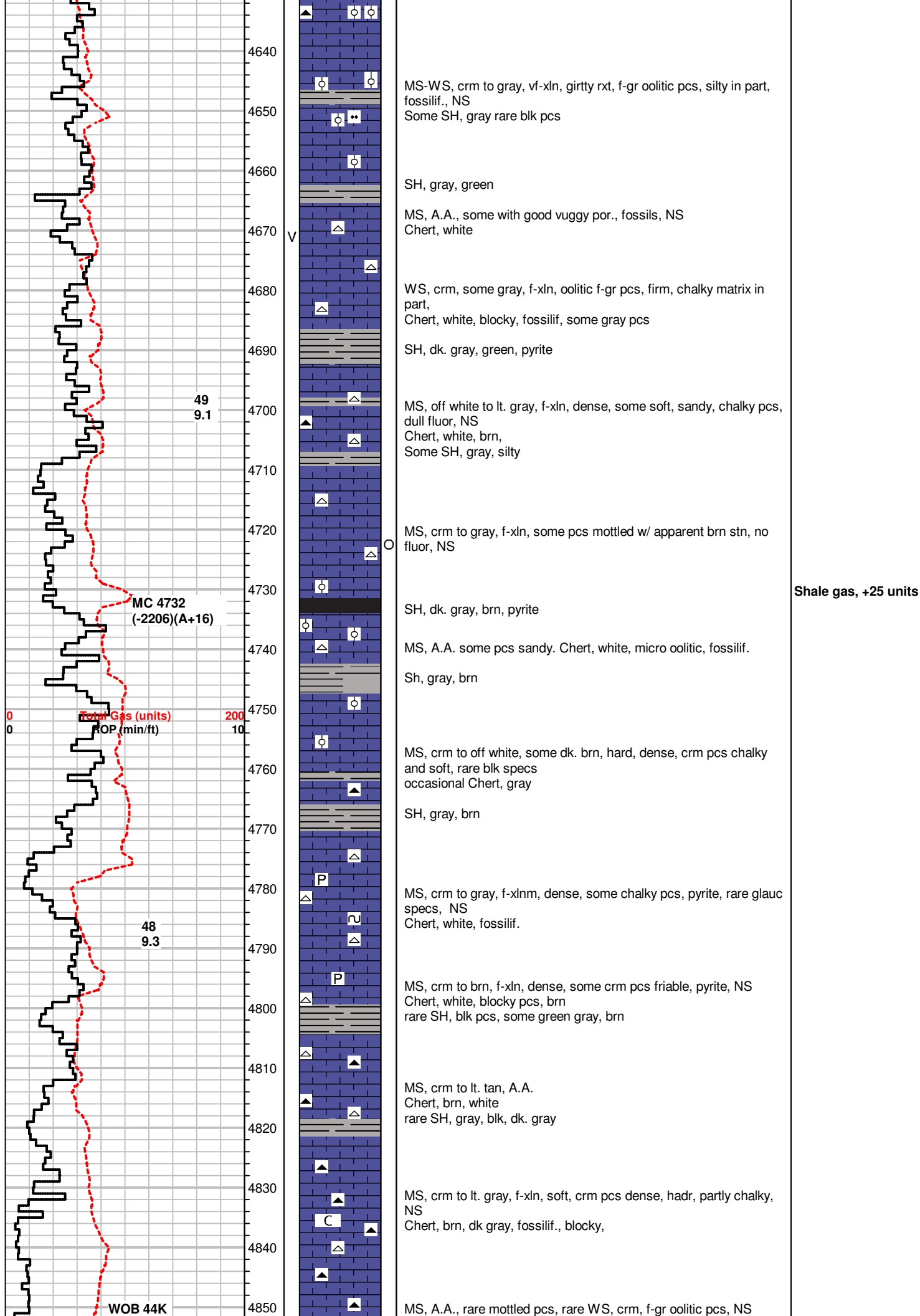
MS, crm to tan, rare brn, firm to hard, some chalky pcs, dense pcs, some mottled w/ Chert on edges, white

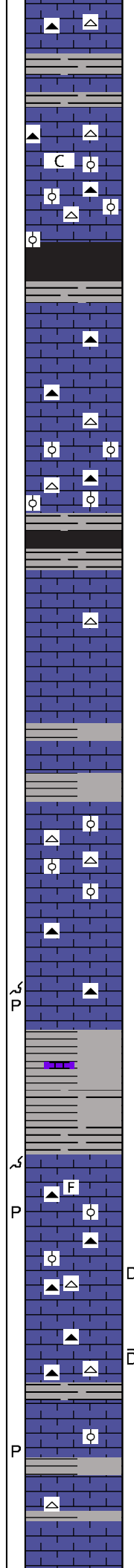
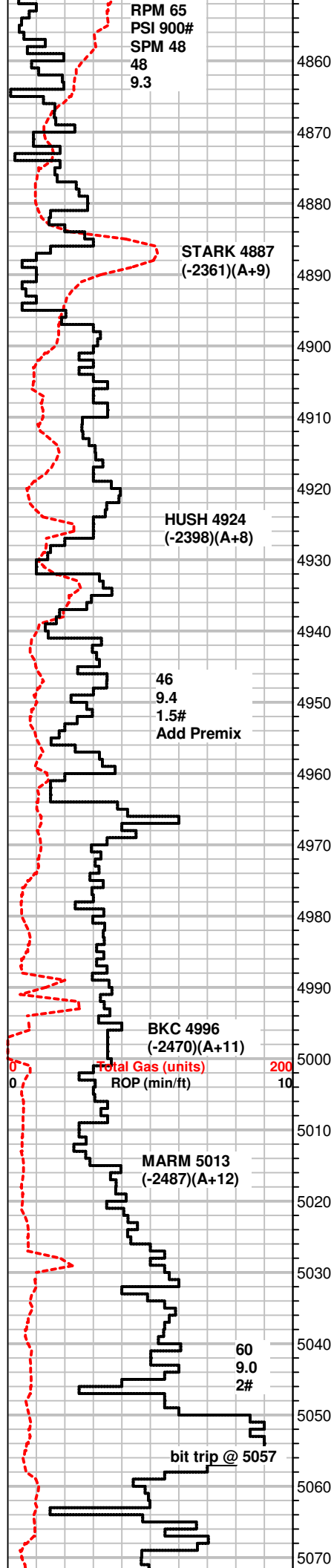
MS-WS, tan, some crm, vf-oolitic pcs, some dense, firm to hard, NS, rare chalky pcs MS, brn
Some SH, gray

MS, crm, f-xln, dense, hard, some soft, rare gritty pcs, micro-oolitic txt, mottled pcs w/ m-gr black ooids
Chert, tan

MS, crm to tan, f to vf-xln, firm, micro oolitic pcs, rare mottled pcs w/ blk specs, min. flour, NS
Chert, tan
some SH, gray

MS-WS, crm to tan, vf-xln, some mic-xln, rare m-gr oolitic pcs, tite matrix, rare mottled pcs A.A., bright min. flour, NS
Chert, dk gray, white





Chert, brn, off white

Some SH, gray green, rare pcs with yellowish and maroon shades

MS-WS, rare PS, crm to gray, some brn, f- to m-xln, m-gr oolitic pcs, tite matrix, chalky crm pcs, some dead wormy stn, no cut, no fluor, NS
Chert, white, gray, tan

SH, dk. gray, blk

MS, crm, some gray, f-xln, soft to firm, fossils, gritty txt.
Chert, gray, tan

SH, gray, silty in part.

MS, A.A.- rare WS, crm to brn, m-gr ooids(black),
Chert, white, gray

SH, dk. gray, gray

MS, crm to tan, f-xln, dense, NS

MS, crm to tan, f-xln, A.A.

Sh, gray

Sh, dk. gray

MS-WS, crm to off white, brn mic-xln, micro oolitic, chalky pcs, mostly dense, NS
Chert, white

MS, crm to lt. tan, f-xln, dense, hard, MS
Chert, gray, white, brn

SH, gray, green, pyrite

SH, dk. gray, gray

MS, gray to crm, vf-xln, dense, hard,

Inc. amt of crm pcs, fractured
Chert, brn, fossilif.

MS, crm to gray, f-xln, dense, rare mottled pcs,
Chert, brn, fossilif. A.A.

MS, crm to brn, some gray, dense, hard, some dk. brn, some calcite on edges, rare mottled pcs, halite molds
Chert, white, brn, fossilif.

MS, crm to off white, f-xln, A.A.

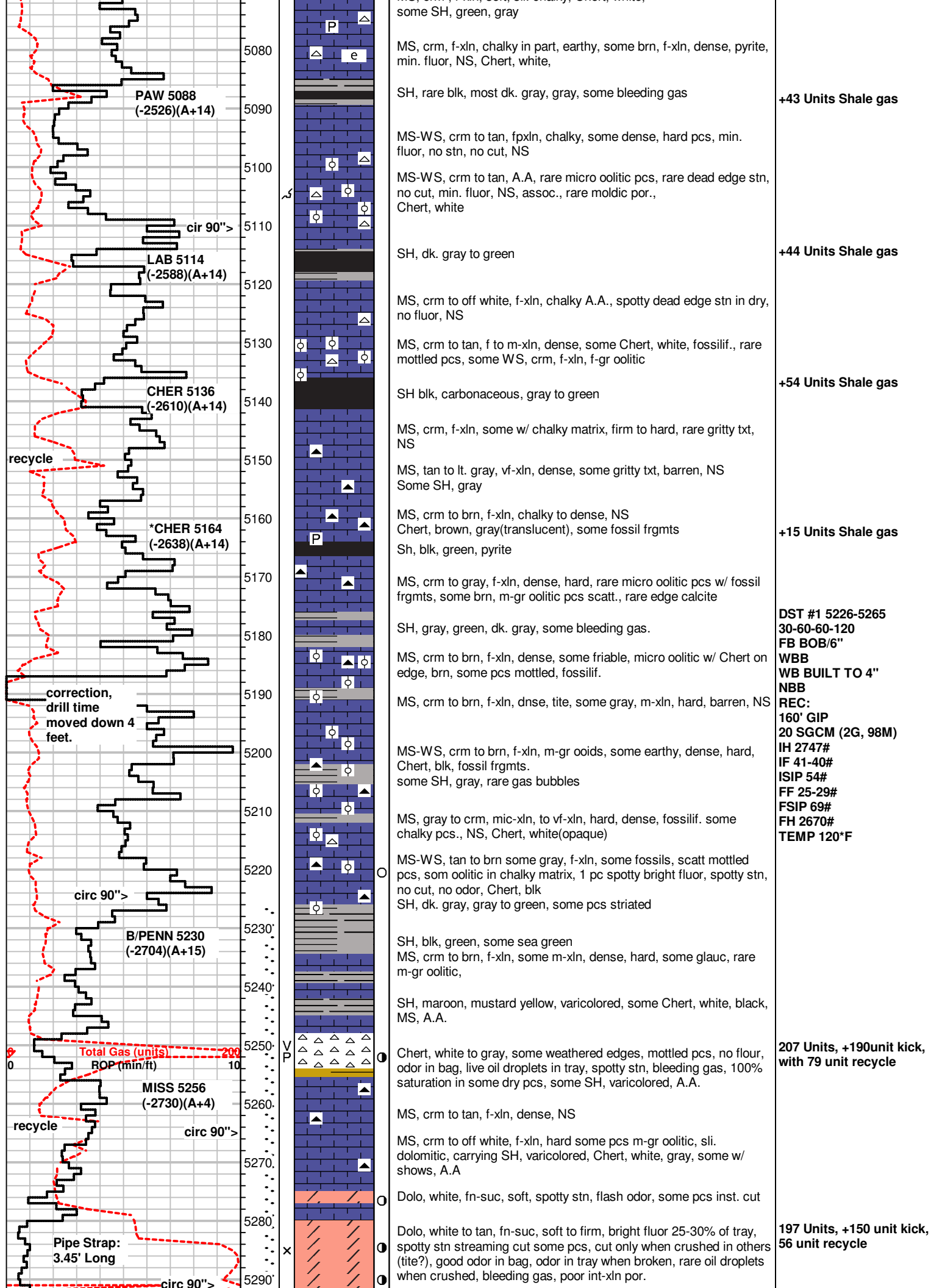
SH, gray, brn, silty

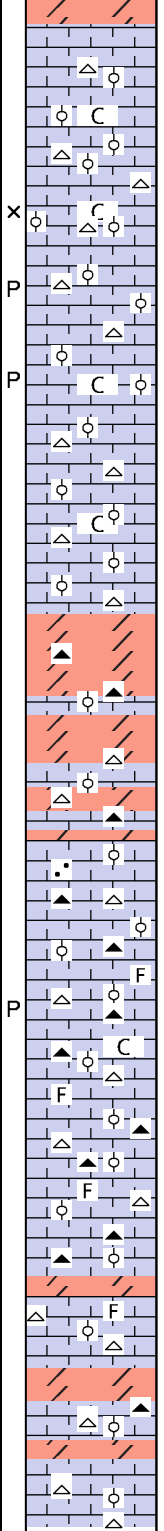
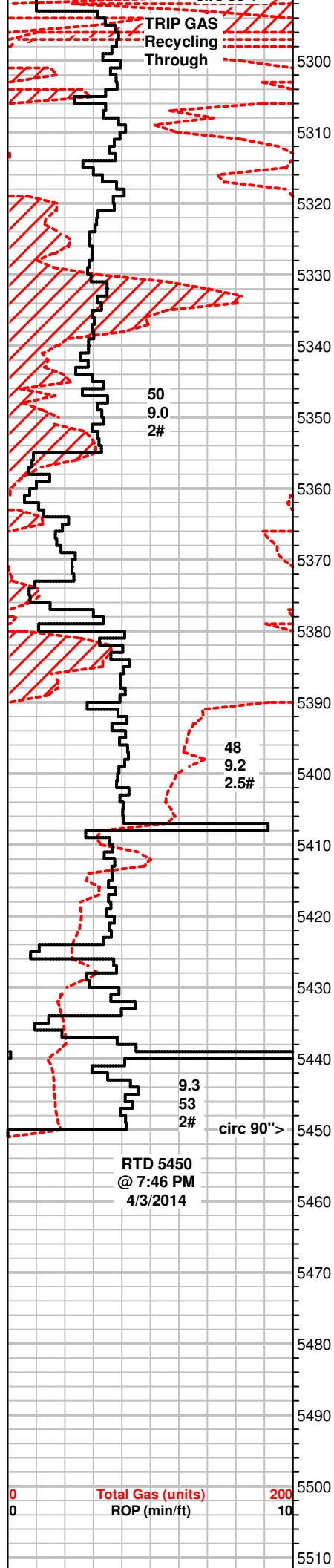
SH, A.A, poor sample, MS, crm to tan, f-xln, dense,
Chert, white

MS, crm, f-xln, soft, sli, chalky, Chert, white.

Shale gas +84 units

Shale gas +17 units





MS-WS, crm to tan, some off white, dense, earthy in part, some fossilif pcs, hard to firm, some fractured pcs, NS

MS-WS, crm to tan, firm, fractured pcs, rare PS, off white, soft, fossilif, NS

WS-PS, crm to off white, sli chalky matrix, m-gr oolitic pcs, some fossilif., some calcite, Chert, white, tan, NS

WS-PS, off white to crm, A.A., some chalky matrix w/ m-gr ooids. A.A.

WS, crm to tan, sli. chlaky in part, firm to hard, fossilif in few pcs, m-gr oolites in chalky matrix, NS, Chert, white, tan

WS, crm to tan, sli. chalky, firm to hard, fossilif in rare pcs, m-gr oolitic, barren, NS, Chert, tan to white

PS, off white, soft to firm, partially oolitic, m-gr ooids, chalky pcs scatt.

PS, off white, A.A., Chert, white

Dolo, brn, vf-xln, fn-suc txt, firm to hrad, gold min. fluor, NS some WS, crm to tan, f-xln, dense, oolitic in part, rare Chert, gray, white

Dolo, brn, tan, firm to hard, A.A.

WS, crm to gray, mottled pcs, dolomitic, sandy txt, firm, NS Chert, white, bluish gray

WS-PS, crm to off white, chalky, f to m-xln, soft to hard, Chert, blk, white, micro oolitic, fossilif. rare PP por.

WS-PS, crm to off white, chalky, some hard, f-xln, Chert, white, blk, fossilif

WS-PS, crm to tan, chalky, f-xln pcs, hard, dense, Chert, white, blk, fossilif.

Dolo, tan to brn, vf-suc, hard

MS, crm to tan, f-xln, firm, rare PS, off white, fossilif, m-gr oolities, Chert, white

MS, A.A., Chert, white, gray, tan
Dolo, brn to tan, f-suc, hard

Dolo, gray to brn, f-xln, vf-suc, hard,
MS, crm, f-xln, firm, some pcs oolitic WS, Chert, white, tan fossilif.

DST #2 5263-5291
30-60-60-120
FB BOB/4"
NBB
SB BOB/30SEC
GTS/15" TSTM
1/2IN BB
REC:
4969' GIP
279' FLUID AS FOLLOWS
155 GOCM (10G, 30O,
60M)
125 GOMCW (20G, 20O,
40W, 20M)
IH 2719#
IF 64-69#
ISIP 1352#
FF 65-126#
FSIP 1345#
FH 2559#
TEMP 120°F
CL 70,000
Rw .19@41°F

5520

5530

5540

5550

5560

5570

5580

5590