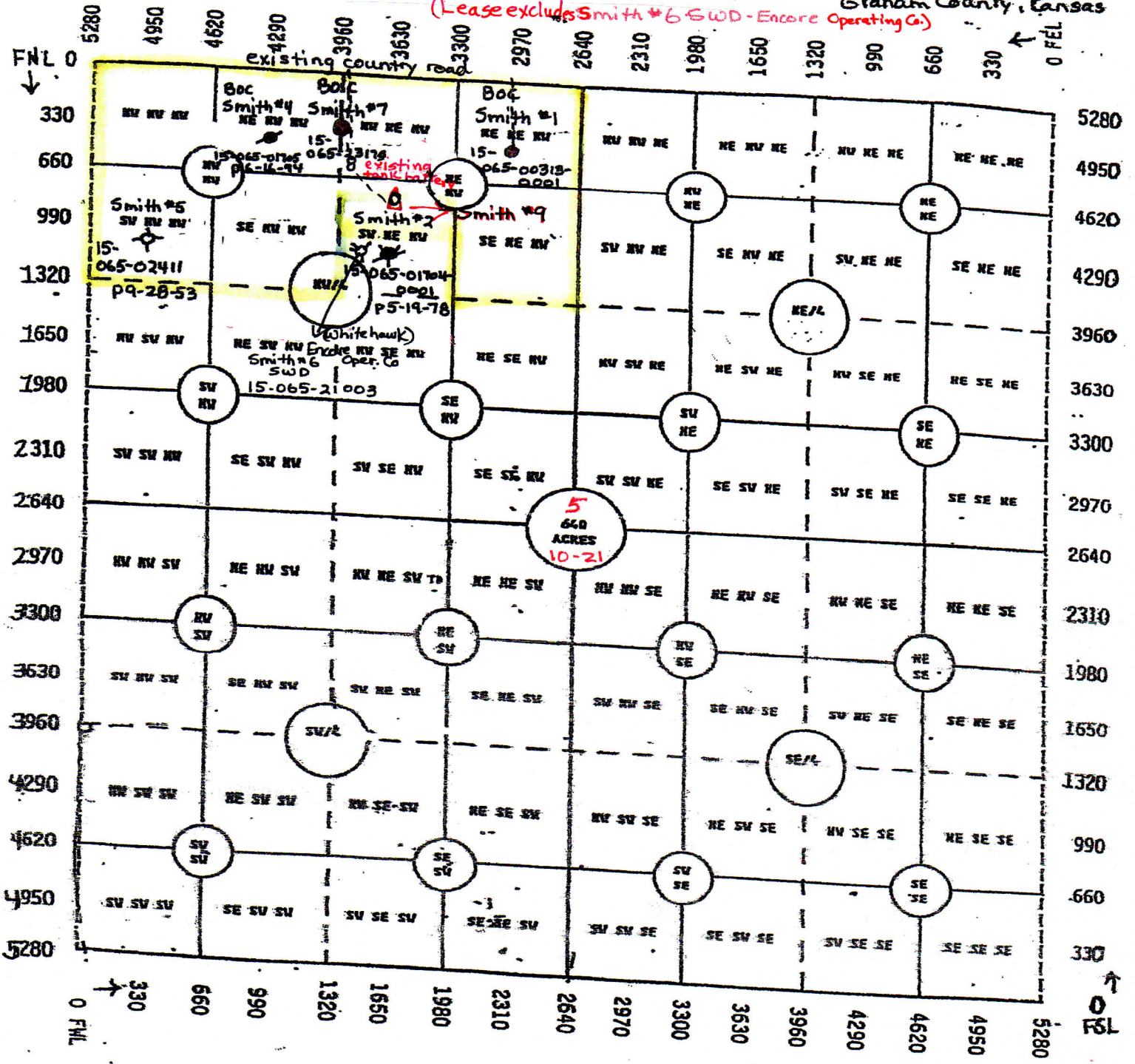


Bowman Oil Company

Smith Lease N/2 of NW/4 of 5-10-21

(Lease excludes Smith #6 SWD - Encore Operating Co.) Graham County, Kansas



Smith #9
 NESW NE NW
 890' F.NL
 1730' FWL
 NW corner

if production pipe is set,
 a new leadline will be laid
 from #9 well to existing
 tank battery