



**TRILOBITE TESTING, INC.**

# DRILL STEM TEST REPORT

Berexco, LLC  
 2020 N. Bramblewood  
 Wichita, KS 67206  
 ATTN: Bryan Bynog

**9/1s/37w Cheyenne KS**  
**Mears 'A' #3-9**  
 Job Ticket: 55978 **DST#: 2**  
 Test Start: 2014.03.29 @ 04:33:00

## GENERAL INFORMATION:

Formation: **LKC " B & C "**  
 Deviated: No Whipstock: ft (KB)  
 Test Type: Conventional Bottom Hole (Reset)  
 Time Tool Opened: 08:24:15 Tester: Robert Zodrow  
 Time Test Ended: 16:29:00 Unit No: 57  
 Interval: **4230.00 ft (KB) To 4360.00 ft (KB) (TVD)** Reference Elevations: 3263.00 ft (KB)  
 Total Depth: 4360.00 ft (KB) (TVD) 3252.00 ft (CF)  
 Hole Diameter: 7.88 inches Hole Condition: Fair KB to GR/CF: 11.00 ft

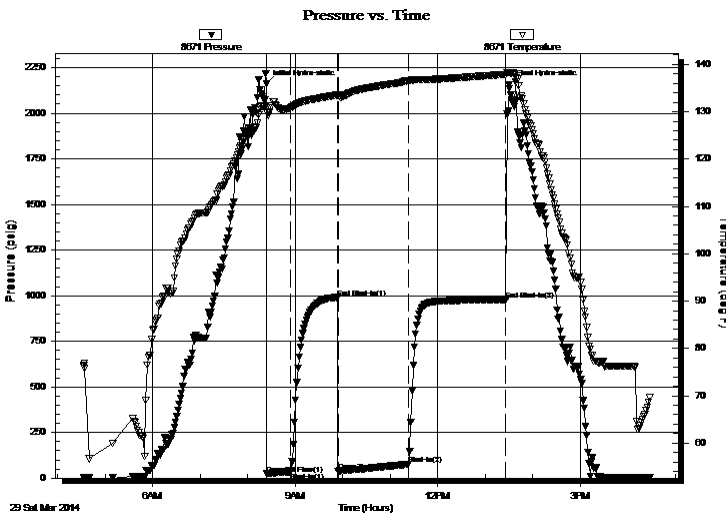
## Serial #: 8671

Inside

Press @ Run Depth: 75.70 psig @ 4231.00 ft (KB) Capacity: 8000.00 psig  
 Start Date: 2014.03.29 End Date: 2014.03.29 Last Calib.: 2014.03.29  
 Start Time: 04:33:05 End Time: 16:29:00 Time On Btm: 2014.03.29 @ 08:24:00  
 Time Off Btm: 2014.03.29 @ 13:30:15

TEST COMMENT: 30-IF- Blow Built To 3/4"  
 60-ISI-No Return  
 60-FF-Blow Built To 1"  
 120-FSI-No Return

## PRESSURE SUMMARY



Time (Min.)	Pressure (psig)	Temp (deg F)	Annotation
0	2160.07	131.22	Initial Hydro-static
1	23.23	129.92	Open To Flow (1)
30	34.65	130.73	Shut-In(1)
90	990.45	133.52	End Shut-In(1)
91	38.47	133.64	Open To Flow (2)
180	75.70	136.58	Shut-In(2)
303	977.75	137.88	End Shut-In(2)
307	2158.76	138.21	Final Hydro-static

## Recovery

Length (ft)	Description	Volume (bbl)
119.00	ocm 10%o 90% m	0.59
1.00	clean oil 100%o	0.00

\* Recovery from multiple tests

## Gas Rates

Choke (inches)	Pressure (psig)	Gas Rate (Mcf/d)



**TRILOBITE  
TESTING, INC.**

# DRILL STEM TEST REPORT

**FLUID SUMMARY**

Berexco, LLC

**9/1s/37w Cheyenne KS**

2020 N. Bramblewood  
Wichita, KS 67206

**Mears 'A' #3-9**

Job Ticket: 55978

**DST#: 2**

ATTN: Bryan Bynog

Test Start: 2014.03.29 @ 04:33:00

## Mud and Cushion Information

Mud Type: Gel Chem

Cushion Type:

Oil API:

20 deg API

Mud Weight: 9.00 lb/gal

Cushion Length:

ft

Water Salinity:

ppm

Viscosity: 93.00 sec/qt

Cushion Volume:

bbbl

Water Loss: 7.20 in<sup>3</sup>

Gas Cushion Type:

Resistivity: ohm.m

Gas Cushion Pressure:

psig

Salinity: 700.00 ppm

Filter Cake: 2.00 inches

## Recovery Information

Recovery Table

Length ft	Description	Volume bbl
119.00	ocm 10%o 90%m	0.585
1.00	clean oil 100%o	0.005

Total Length: 120.00 ft      Total Volume: 0.590 bbl

Num Fluid Samples: 0

Num Gas Bombs: 0

Serial #:

Laboratory Name:

Laboratory Location:

Recovery Comments:

### Pressure vs. Time

