

# **John Goldsmith Wellsite Service**

Cell and Home Phone:  
316-640-0236

427 Roosevelt St.  
Cheney, KS 67025

## **Scale 1:240 (5"=100') Imperial Measured Depth Log**

**Well Name:** #6 Wicked Witch  
**Location:** 1980' FNL & 1980' FWL, C SE NW, 31-19S-23W  
**License Number:** API: 15-135-25707  
**Spud Date:** 12/02/2013  
**Surface Coordinates:** LAT 38.3580459  
LONG -99.9085171  
**Bottom Hole** Vertical hole  
**Coordinates:** Bottom Hole Survey = 1/2 Degree  
**Ground Elevation (ft):**2301' **K.B. Elevation (ft):** 2306  
**Logged Interval (ft):**3600' **To:** RTD **Total Depth (ft):**4444'  
**Formation:** Mississippian at RTD  
**Type of Drilling Fluid:**Chemical

**Region:** Ness County

**Drilling Completed:**12/09/2013

Printed by MUD.LOG from WellSight Systems 1-800-447-1534 [www.WellSight.com](http://www.WellSight.com)

### **OPERATOR**

**Company:** D & J Oil Company, Inc.  
**Address:** 4720 West Garriott  
Enid, OK 73703  
(580) 242-3636

### **GEOLOGIST**

**Name:** John Goldsmith  
**Company:** John Goldsmith Wellsite Service  
**Address:** 427 Roosevelt St.  
Cheney, KS 67025  
316-640-0236

### **COMMENTS**

**Contractor:** Murfin Drilling Rig #16  
**Pusher:** Andy Dinkel (785) 443-2377  
**Surface Casing:** 5 joints of 8 5/8" set at 218'  
**Production Casing:** 5.5" Production Casing was installed.  
**Mud by:** Andy's Mud  
**DST's by:** Diamond Testing  
**Logs by:** Pioneer Wireline Services (DIL, CN-CD, ML)  
**RTD=**4444'  
**LTD=**4450'

## FORMATION TOPS






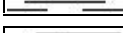


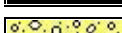
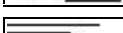
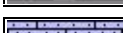
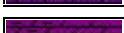





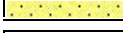
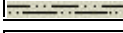



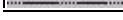



FORMATION	SAMPLE TOPS		LOG TOPS	
	Depth	Datum	Depth	Datum
Heebner Shale	3726'	-1420	3727'	-1421
Lansing	3797'	-1491	3800'	-1494
Stark Shale	4014'	-1708	4022'	-1716
Hushpuckney Shale	4052'	-1746	4059'	-1753
Base of KC	4078'	-1772	4088'	-1782
Marmaton	4111'	-1805	4112'	-1806
Pawnee	4204'	-1898	4209'	-1903
Fort Scott	4286'	-1980	4289'	-1983
Cherokee Shale	4310'	-2004	4313'	-2007
Conglomerate	4339'	-2033	4345'	-2039
Mississippian	4377'	-2071	4380'	-2074
Osage	4418'	-2112	4422'	-2116
RTD	4444'	-2138		
LTD			4450'	-2144

## DSTs

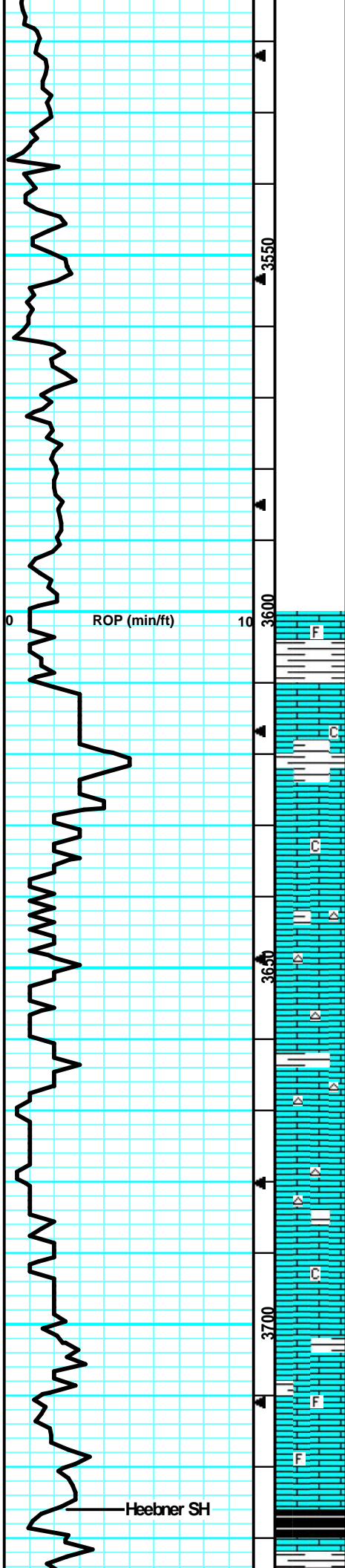
**DST #1 "Ft Scott" 12/08/2013**  
 4270'-4310' 30-45-45-60  
 1st Blw = WSB blt to 1/2" (No BB)  
 2nd Blw = WSB blt to 3/4" (No BB)  
 IFP = 7-14# ISIP = 932# FFP = 17-22# FSIP = 305#  
 HYD = 2083-2082#  
 30' Mud W/ Tr of Oil

**DST #2 "Mississippi" 12/08/2013**  
 4385'-4406" 30-45-45-60  
 1st Blw = 1/2" blw blt to 5" (Wk Surf BB)  
 2nd Blw = 1/4" blw blt to 7" (No BB)  
 IFP = 8-29# ISIP = 1265# FFP = 32-45# FSIP = 1160#  
 HYD = 2154-2154#  
 100' Total Fluid, 25' CO, 10' MCO (82% Oil), 65' HMCO (58% Oil)

## ROCK TYPES

	Anhy		Salt		Dol		Stlysh
	Cht		Shale		Dtd		Sdy dolo
	Coal		Shcol		Gry sh		Silty dolo
	Congl		Shgy		Sandylms		Shy dolo
	Dol		Sltst		Shale		Shaly ls
	Gyp		Ss		Sltstn		
	Lmst		Carb sh		Shlyslts		





**Drill cutting samples at 10' intervals start at 3600'.**

LS: tan/gry, fn xln, mostly dense, fw foss in prt, v fw brittle, sm firm, tr-nvp, fw SH: gry/brn, silty, no cup odr, ns.

LS: tan/lt gry, fn xln, sm dense, fw brittle, v fw foss frags in prt, sm sub-chlky, tr-nvp, v fw SH: gry/brn, silty, no cup odr, ns.

LS: tan/lt gry, fn xln, sm dense, fw brittle, fw foss frags in prt, sub-chlky in prt, tr-nvp, v fw SH: gry, silty, no cup odr, ns.

LS: tan/lt tan, fn xln, mostly dense, sub-chlky in prt, fw flakey/mealy, v fw brittle, tr-nvp, fw pcs pur chlk, fw SH: gry, silty, no cup odr, ns.

LS: tan/lt tan, fn xln, mostly dense, fw brittle, sub-chlky in prt, fw flakey/mealy, tr-nvp, fw pcs pur chlk, no cup odr, ns.

LS: tan/lt tan, fn xln, fw mott in prt, mostly dense, fw firm, sub-chlky in prt, v fw brittle, tr-nvp, v fw Chert: lt brn, sharp, no cup odr, ns.

LS: tan/lt brn, fn xln, sm mott in prt, mostly dense, fw firm, fw sub-chlky in prt/brittle, sm flakey/mealy, tr-nvp, fw Chert: lt brn, sharp, no cup odr, ns.

LS: tan/lt brn, fn xln, sm mott in prt, mosity dense, sm sub-chlky in prt/brittle, tr-nvp, fw Chert: lt brn, sharp, no cup odr, ns.

LS: tan/lt tan, fn xln, sm dense, fw brittle, chlky/sub-chlky in prt, tr-nvp, fw pcs pur chlk, v fw Chert: tan, sharp, no cup odr, ns.

LS: tan/lt gry, fn xln, sm dense, sub-chlky/chlky in most, sm brittle, tr-nvp, svrl pcs pur chlk, no cup odr, ns.

LS: tan/gry, fn xln, sm dense, many brittle, chlky/sub-chlky in prt, sm brittle, tr-nvp, svrl pcs pur chlk, no cup odr, ns.

LS: tan/gry, fn xln, fw dense, many brittle, sub-chlky in sm, tr-nvp, fw pcs pur chlk, fw SH: gry, silty, med crush, no cup odr, ns.

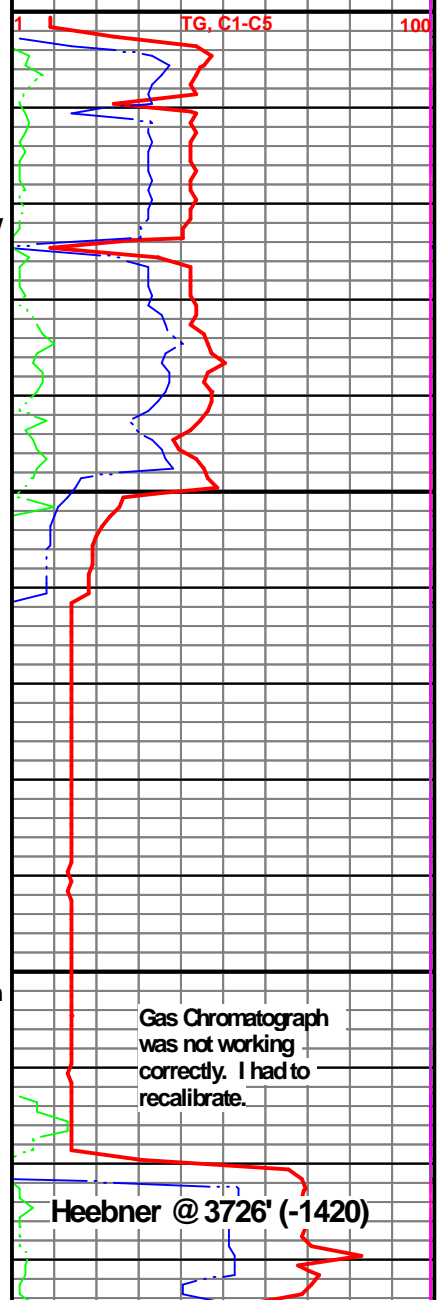
LS: tan/gry, fn xln, mostly brittle, fw dense, fw foss frags, sub-chlky in prt, tr-nvp, fw pcs pur chlk, sm SH: gry, silty, med crush, no cup odr, ns.

LS: gry/tan, fn xln, sm mott in prt, sm dense, fw brittle, fw firm, fw sub-chlky in prt, tr-nvp, sm SH: gry/blk, silty, fw carb, no cup odr, ns.

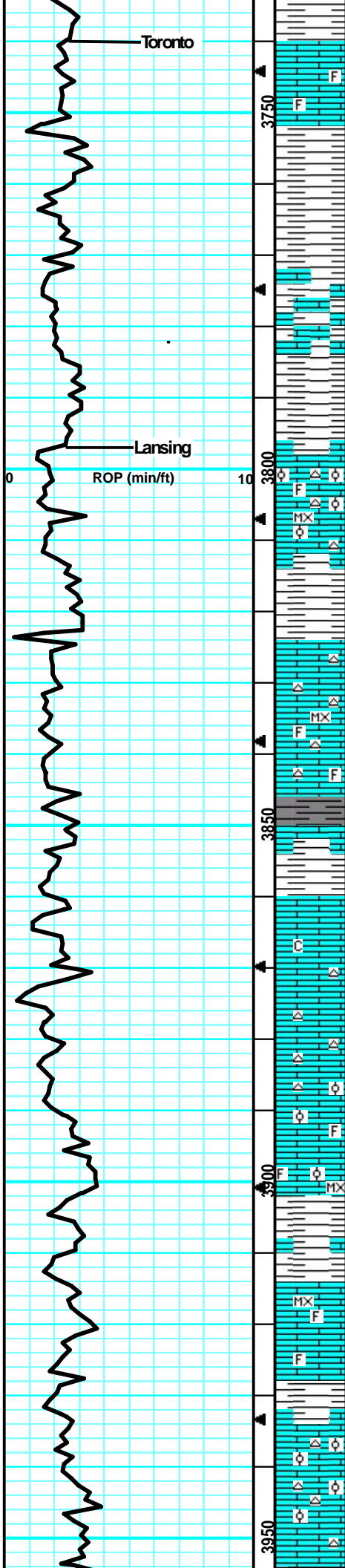
LS: tan/lt gry, fn xln, sm mott in prt, sm dense, fw foss frags, sub-chlky in prt, tr-nvp, fw pcs pur chlk, no cup odr, ns.

Wt=8.8  
Vis=95  
LCM=1.5#

Mud Check  
Wt=8.8  
Vis=75  
LCM=1.5#



Heebner @ 3726' (-1420)



LS: tan/gry, fn xln, sm mott in prt, sm foss in prt, many brittle, fw sub-chlky in prt, tr-nvp, fw SHt drk gry/gry, silty, no cup odr, ns.

LS: tan/lt tan, micro-fn xln, mostly dense, sm brittle, fw sub-chlky in prt, tr-nvp, svrl SHt gry/bm, silty, soft, sm muddy like, no cup odr, ns.

LS: tan/lt brn, fn xln, mostly dense, fw foss frags in sm, fw brittle, tr-nvp, abund SHt gry/bm, silty, soft, fw muddy like, no cup odr, ns.

LS: tan/lt gry, fn xln, sm mott in prt, fw dense, fw brittle, sm scat 2nd rxln, tr-nvp, fw pcs w/ drk min stns, no fluor/cut, fw SHt gry, silty, soft, no cup odr, ns.

LS: tan/gry, fn xln, sm mott in prt, sub-chlky in prt, sm brittle, fw foss frags, fw firm, tr-nvp, fw SHt gry, silty, soft, no cup odr, ns.

LS: lt tan/tan, micro-fn xln, mostly dense, sm brittle, fw sub-chlky in prt, tr-nvp, fw SHt gry/bm, silty, fw fissile, no cup odr, ns.

LS: lt tan/gry, micro-fn xln, mostly dense, fw brittle, fw sub-chlky in prt, v fw w/ sm ool, tr-nvp, svrl SHt gry/bm, silty, no cup odr, ns.

LS: tan/lt gry, micro-fn xln, fw foss, mostly dense, sm brittle, fw sub-chlky in prt, tr-nvp, fw Chert: wht/opaque, foss, sharp, fw SHt gry/grn, silty, fw waxy, no cup odr, ns.

LS: tan/lt tan, fn xln, sm dense, mostly brittle, fw sub-chlky in prt, fw foss in prt, sm scat 2nd rxln, tr-nvp, fw Chert: wht/opaque, sharp, no cup odr, ns.

LS: lt tan/crm, micro-fn xln, mostly dense, many brittle, sub-chlky in prt, tr-nvp, fw lrg cal nodule, sm Chert: wht/opaque, sharp, no cup odr, ns.

LS: tan/lt gry, fn xln, sm dense, sm brittle, fw foss frags, chlky/sub-chlky, tr-nvp, sm pcs pur chl, fw SHt gry, silty, fissile, no cup odr, ns.

LS: tan/lt gry, fn xln, fw mott in prt, fw dense, sm brittle, fw sub-chlky in prt, tr-nvp, v fw SHt gry, silty, soft, no cup odr, ns.

LS: tan/lt gry, fn xln, sm dense, fw brittle, fw sub-chlky in prt, fw pcs w/ scat 2nd rxln, tr-nvp, fw pcs pur chl, no cup odr, ns.

LS: lt gry/tan, fn xln, mostly dense, sm brittle, fw firm, fw sub-chlky in prt, tr-nvp, fw pcs Chert: tan/smoke, sharp, fw SHt gry/grn, silty, fw waxy, no cup odr, ns.

LS: tan/lt tan, fn xln, fw dense, sm brittle, sub-chlky in prt, fw pcs w/ 2nd rxln, tr-nvp, fw pcs pur chl, fw Chert: lt tan/wht, sharp, no cup odr, ns.

LS: tan/lt tan, fn xln, fw foss in prt, fw ool, sm dense, fw brittle, sm sub-chlky in prt, tr-nvp, fw pcs pur chl, no cup odr, ns.

LS: lt tan/tan, micro-fn xln, mostly dense, sm foss in prt, fw brittle, sub-chlky in prt, tr-nvp, fw pcs pur chl, fw SHt gry, fissile, silty, no cup odr, ns.

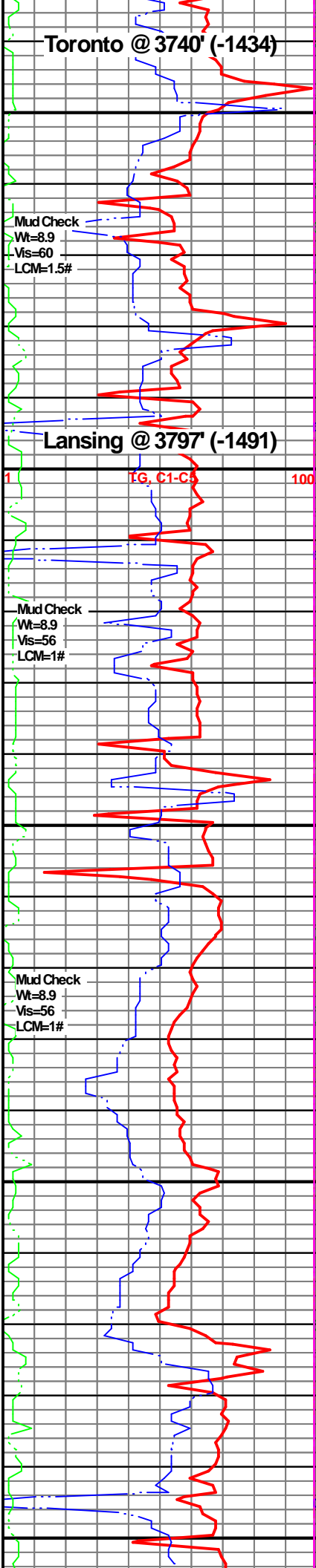
LS: tan/lt gry, fn xln, sm dense, many brittle, sm foss in prt, fw sub-chlky, tr-nvp, fw pcs pur chl, fw SHt gry, silty, fw soft, no cup odr, ns.

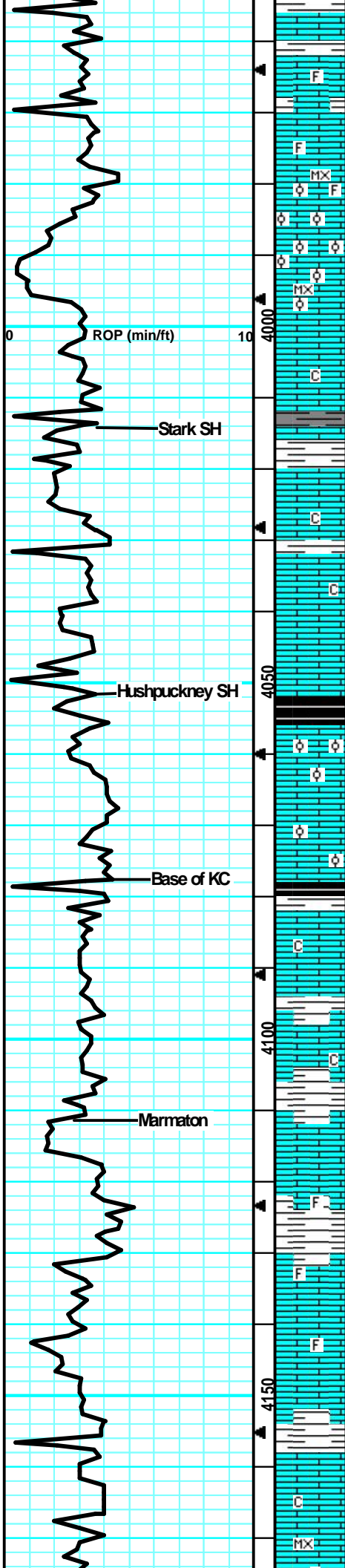
LS: tan/lt tan, fn xln, fw mott in prt, fw foss frags, sm dense, fw brittle, fw sub-chlky in prt, tr-nvp, fw pcs pur chl, sm SHt gry/grn, silty, fw waxy, sm soft, no cup odr, ns.

LS: tan/lt gry, fn xln, fw mott in prt, fw dense, sm brittle, sm ool, sm sub-chlky in prt, tr-nvp, fw Chert: lt gry/smoke, sharp, sm SHt gry, silty, fw fissile, no cup odr, ns.

LS: tan, fn xln, sm mott in prt, sm dense, fw brittle, sm flakey/mealy, tr-nvp, svrl SHt gry, silty, fw fissile, sm soft, no cup odr, ns.

LS: tan, fn xln, fw mott in prt, sm dense, fw brittle, sm





flakey/mealy, tr-nvp, fw SH: gry, silty, sm soft, no cup odr, ns.

LS: tan/lt tan, fn xln, many dense, fw foss frags in prt, fw brittle, sm sub-chlky in prt, fw flakey/mealy, tr-nvp, sm SH: gry, silty, soft, no cup odr, ns.

LS: tan/lt tan, fn xln, many dense, fw foss frags in prt, fw brittle, sm firm, fw sub-chlky, tr-nvp, svrl SH: gry/gm, silty, soft, no cup odr, ns.

LS: tan/lt tan, micro-fn xln, sm dense, fw ool, sm brittle, fw sub-chlky in prt, tr-nvp, svrl SH: gry/gm/brn, silty, soft, no cup odr, ns.

LS: tan/lt gry, fn xln, mostly brittle, sm dense, many ool, chlky/sub-chlky, tr-nvp, fw pcs pur chl, svrl SH: gry/brn, silty, soft, no cup odr, ns.

LS: tan/lt gry, fn xln, fw mott in prt, sm brittle, fw firm, many sub-chlky, tr-nvp, fw SH: gry, silty, sm soft, no cup odr, ns.

LS: tan/lt gry, fn xln, fw mott in prt, fw firm, fw sub-chlky in prt, tr-nvp, svrl SH: gry/drk gry/brn, silty, sm soft, no cup odr, ns.

LS: tan/lt gry, fn xln, sm dense, fw firm, sub-chlky in prt, fw gritty, tr-nvp, svrl SH: gry/gm, silty, fw waxy, soft, no cup odr, ns.

LS: tan/lt gry, fn xln, sm dense, fw firm, sm gritty like, fw sub-chlky in prt, tr-nvp, svrl SH: gry/gm/brn, silty, fw waxy, no cup odr, ns.

LS: tan/lt gry, fn xln, many dense, fw brittle, sm gritty like, tr-nvp, fw pcs pur chl, svrl SH: gry/blk, silty, soft, many carb, no cup odr, ns.

SH: gry/gm/blk, silty, soft, sm waxy, many carb, fw LS: tan, fn xln, fw gritty like, tr-nvp, fw pcs pur chl, no cup odr, ns.

LS: lt gry/crm/lt tan, fn xln, sm mott in prt, sm ool, many chlky, mostly brittle, tr-nvp, fw SH: gry/blk, silty, soft, fw carb, no cup odr, ns.

LS: crm/lt gry, fn xln, sm mott in prt, sm ool, many chlky/sub-chlky, brittle, tr-nvp, svrl pcs pur chl, many SH: gry/blk, silty, sm carb, no cup odr, ns.

LS: lt tan/lt gry, fn xln, fw mott in prt, sm sub-chlky, fw dense/flakey, tr-nvp, fw SH: gry, silty, sm soft, no cup odr, ns.

LS: tan/gry, fn xln, mostly dense, fw firm, sm flakey/mealy, fw brittle, tr-nvp, fw SH: gry/brn, silty, sm soft, no cup odr, ns.

LS: gry/tan/lt brn, fn xln, many dense, fw firm, sm flakey/mealy, fw brittle, scat 2nd rxln in sm, tr-nvp, fw SH: gry/brn, silty, soft, no cup odr, ns.

LS: lt gry/lt brn, fn xln, mostly dense, sm 2nd rxln in prt, many flakey/mealy, fw brittle, tr-nvp, fw SH: gry/blk, silty, fw carb, soft, no cup odr, ns.

LS: lt gry/lt tan, fn xln, fw mott in prt, fw brittle, sm foss frags, sub-chlky, tr-nvp, fw pcs pur chl, fw SH: gry, silty, soft, no cup odr, ns.

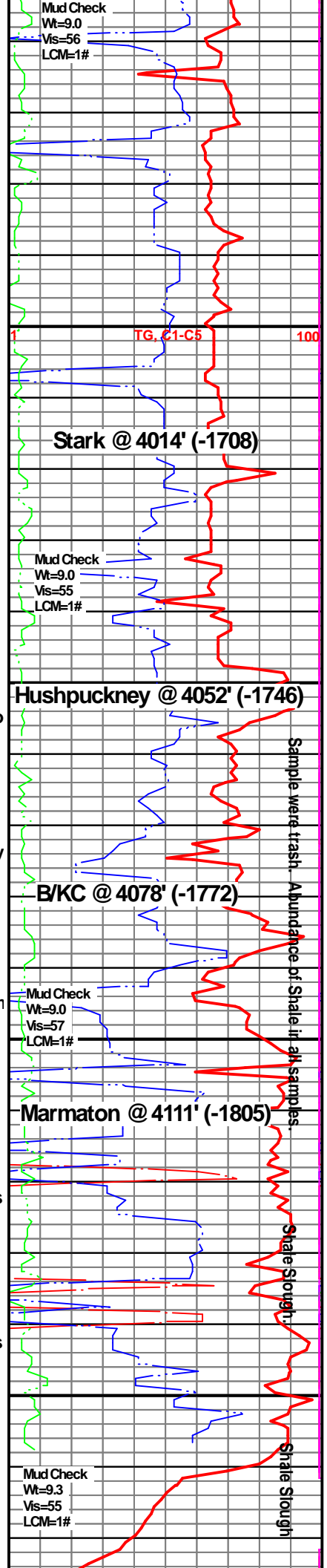
LS: lt gry/lt tan/crm, fn xln, fw mott, mostly brittle, sm foss frags in prt, chlky/sub-chlky, tr-nvp, fw pcs pur chl, fw SH: gry, silty, soft, no cup odr, ns.

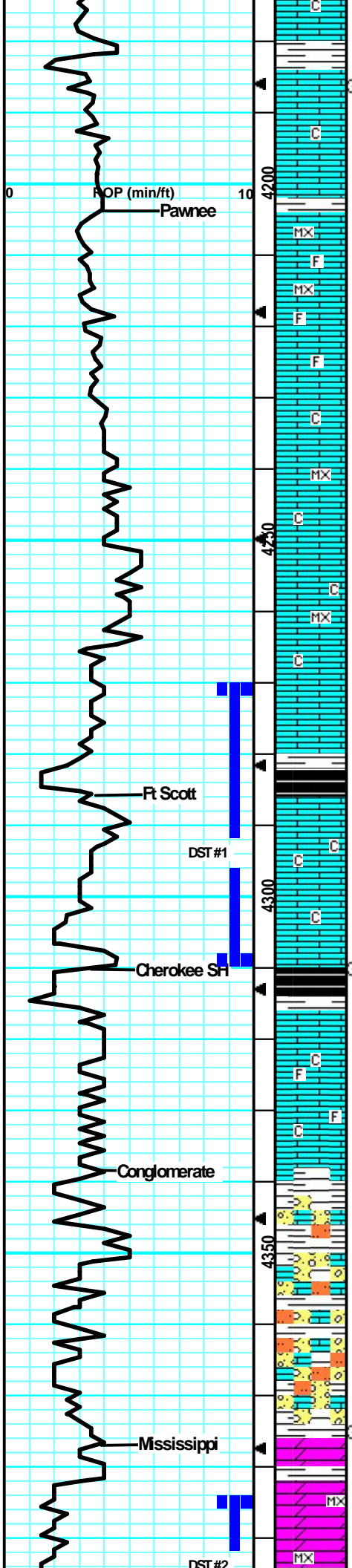
LS: lt gry/lt tan, fn xln, fw mott in prt, sm brittle, fw foss in prt, sm sub-chlky, tr-nvp, fw pcs pur chl, sm SH: brn/gry, silty, muddy, no cup odr, ns.

LS: tan/lt gry, fn xln, sm mott in prt, sm scat 2nd rxln, mostly dense, sm firm, fw sub-chlky/brittle, tr-nvp, fw SH: brn/gry, silty, sm muddy like, no cup odr, ns.

LS: lt gry/lt tan, fn xln, mostly dense, fw brittle, sm sub-chlky in prt, sm scat 2nd rxln, tr-nvp, sm SH: gry/brn, silty, sm muddy like, no cup odr, ns.

LS: lt tan/lt gry, micro-fn xln, mostly dense, fw brittle,





fw sub-chlky in prt, w/ SH: gry/brn, silty, no cup odr, ns.

LS: tan/gry, fn xln, fw mott in prt, mostly dense, sm firm, fw flakey/mealy, tr-nvp, fw pcs w/ drk min strns, no fluor/cut, fw Chert: wht/opaque, sharp, fw SH: gry, silty, soft, no cup odr, ns.

LS: tan/lt gry, fn xln, sm dense, fw sub-chlky in prt, fw flakey, sm brittle, fw firm, tr-? intxn por in sm, fw SH: gry/blu, silty, fissile, no cup odr, ns.

LS: tan/lt gry, micro-fn xln, mostly dense, sm firm, fw sub-chlky in prt, sm flakey/mealy, tr-nvp, fw SH: gry, silty, soft, no cup odr, ns.

LS: tan/lt tan, micro-fn xln, sm foss in prt, mostly dense, sm firm, fw brittle, fw flakey, fw sub-chlky in prt, tr-nvp, fw SH: gry/brn, silty, fw fissile, no cup odr, ns.

LS: tan/lt gry, fn xln, fw foss frags, sm dense, fw brittle, fw sub-chlky in prt, sm flakey/mealy, tr-nvp, svrl SH: gry/brn/grn, silty, fw waxy, no cup odr, ns.

LS: tan/lt gry, fn xln, mostly dense, sub-chlky in prt, many firm, sm flakey/mealy, tr-nvp, svrl SH: gry/brn, silty, fissile, no cup odr, ns.

LS: tan/lt brn, micro-fn xln, sm mott in prt, mostly dense, many firm, fw sub-chlky in prt, tr-nvp, svrl SH: gry/brn, silty, no cup odr, ns.

LS: tan/lt brn, fn xln, mostly dense, sm hard, many firm, sub-chlky in prt, tr-nvp, abund SH: gry/brn/grn/blk, silty, fw carb, no cup odr, ns.

LS: tan, micro-fn xln, mostly dense, sm hard, many firm, sub-chlky in prt, fw flakey/mealy, tr-nvp, svrl SH: gry/brn/blk, silty, soft, fw carb, no cup odr, ns.

SH: gry/brn/blu/blk, silty, soft, sm carb, fw fissile, fw LS: lt tan, micro-fn xln, mostly dense, fw brittle, sub-chlky in prt, tr-? intxn por in fw, no cup odr, ns.

SH: blk/gry/drk gry, silty, mostly carb, soft, fw fissile, fw LS: tan/lt tan, fn xln, mostly dense, fw sub-chlky, tr-nvp, no cup odr, ns.

SH: blk/gry/brn, silty, many carb, soft, fw fissile, fw LS: lt tan/tan, fn xln, mostly dense, sm brittle, fw sub-chlky, tr-nvp, no cup odr, ns.

LS: tan/lt tan, fn xln, many dense, sub-chlky in prt, fw brtty, pr intxn por on edge, scat dul yel fluor on sm edge, lght brn strns, wk-? cut resid, no cup odr, nsfo.

SH: gry/blk/brn/grn, silty, soft, sm waxy, fw carb, fw LS: tan/lt gry, fn xln, fw mott in prt, fw dense, mostly brittle, chlky/sub-chlky, tr-nvp, no cup odr, ns.

SH: gry/brn/blk, silty, soft, fw fissile, fw waxy, fw carb, sm LS: tan/lt gry, fn xln, sm dense, fw brittle, sm scat 2nd rxln, tr-nvp, no cup odr, ns.

SH: gry/brn/grn, silty, soft, fw fissile, fw SH: It gry, gritty, v soft, sm LS: tan/lt gry, fn xln, fw foss in prt, sub-chlky, fw flakey/mealy, tr-nvp, no cup odr, ns.

SH: gry/brn, silty, soft, fw SH: It gry, v soft, gritty like, fw LS: tan/lt brn, fn xln, sm sandy, fw flakey, sub-chlky, tr-nvp, no cup odr, ns.

SH: gry/grn/brn, silty, soft, fw muddy like, sm LS: lt tan/crm/lt gry, fn xln, sm dense, mostly brittle, fw flakey/mealy, chlky/sub-chlky, fw pcs w/ pr intxn por, no cup odr, ns.

SH: gry/brn/blk, silty, soft, fw carb, sm LS: gry/lt brn, fn xln, mostly dense, firm, fw flakey/mealy, tr-nvp, fw Chert: wht/opaque, sharp, no cup odr, ns.

SH: gry/brn/gry, silty, soft, fw waxy, fw carb, sm LS: lt tan/lt brn, fn xln, mostly dense, fw firm, sm flakey/mealy, tr-nvp, no cup odr, ns.

DOL: lt gry/lt tan, micro-fn xl, mostly dense, sm brittle, scat vuggy por, 2nd rxln in vugs, drk hvy strns in vug, wk dul yel fluor, cut pal blu, gd cup odr, svrl SH: gry/grn, silty, soft, vssfo.

DOL: lt gry/lt tan, micro-fn xln, mostly dense, sm firm, scat gd vuggy por, drk patchy sat strns, fr-gd cup, dul yel fluor, some cut f. of cfa.

Stop and Short Mud Report #5  
 4181' 12/07/13  
 Trip 15 Stands and Jet/Run in new tank of mud. Wt Vis pH  
 9.3 61 9.5  
 Filtr Chl LCM  
 8.4 2K 1#

**Pawnee @ 4204' (-1898)** 100

Outside Temperature was in the low single digits. Gas line froze up and Chromatograph was not receiving air from the mud.

Mud Check  
 Wt=9.2  
 Vis=69  
 LCM=1#

Mud Check  
 Wt=9.2  
 Vis=72  
 LCM=1#

DST #1 "Ft Scott"  
 12/08/2013 4270'-4310'  
 30-45-45-60  
 1st Blw= WSB bit to 1/2" (No BB)  
 2nd Blw= WSB bit to 3/4" (No BB)  
 IFP= 7-14# ISP= 932#  
 FFP= 17-22# FSP= 305#  
 HYD= 2083-2082#  
 30' Mud W/ Tr of Oil

**Ft Scott @ 4286' (-1980)**

Mud Check  
 Wt=9.2  
 Vis=66  
 LCM=1#

Survey @ 4310' = 3/4 Degree

CFS @ 4310'  
 (30"/60")

**Cherokee @ 4310' (-2004)**

Mud Check  
 Wt=9.3  
 Vis=58  
 LCM=1#

**Conglomerate @ 4339' (-2033)**

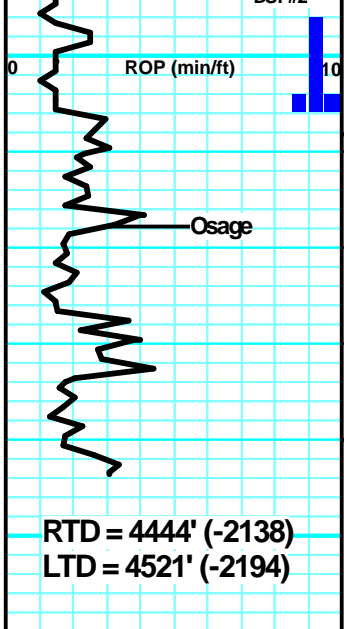
Mud Check  
 Wt=9.4  
 Vis=59  
 LCM=1#

Mud Report #6  
 4373' 12/08/13  
 Wt Vis pH  
 9.4 56 10.0  
 Filtr Chl LCM  
 7.2 3K 1#

CFS @ 4375'  
 (30"/60")

**Miss @ 4377' (-2071)**

DST #2 "Mississippi"  
 12/08/2013  
 4385'-4406" 30-45-45-60  
 1st Blw= 1/2" blw bit to 5" (Wk



DOL: lt gry/lt tan, micro-fn xln, sm dense, fw firm, gd vug por, drk hvy sat stns in por, dul yel fluor, strn cut, fr sfo on brk, fr-gd cup odr. 60" Smple cont more chlky fn inbxln por w/ ssfo.  
 DOL: tan/lt tan, micro-fn xln, sm brittle, fw sub-chlky in prt, fw pcs vug por, brn stns, much like sho above, abund SHt gry/brn, silty, sof,t no cup odr, ns.  
 DOL: fw like desc above, sm lt tan, sub-chlky, brittle, tr-nvp, abund SHt gry/brn, silty, soft, sm Chert: wht/opaque, sharp, no cup odr, ns.  
 Chert: wht/opaque, sharp, fw foss frags, fw DOL: lt tan, fn xln, chlky, tr-nvp, svrl SHt gry/brn, silty, sm soft, no cup odr, ns.  
 Chert: wht/opaque, sharp, v hrd, sm DOL: lt tan/crm, fn xln, chlky, brittle, tr-nvp, sm SHt gry/brn/gm, silty, soft, no cup odr, ns.

**CFS @ 4400'**  
 (30"/60")  
 2nd Blw = 1/4" blw blt to 7" (No BB)  
 IFP = 8-29# ISIP = 1265# FFP 0  
 = 32-45# FSIP = 1160#  
**CFS @ 4406'**  
 (30"/60")  
 HYD = 2154-2154#  
 100' Total Fluid, 25' CO, 10' MCO  
 (82% Oil), 65' HMCO (58% Oil)

**Osage @ 4418' (-2112)**

**CFS @ 4444'**  
 (30"/60")

Mud Report #7			
4443' 12/09/13			
Wt	Vis	pH	
9.2	53	10.5	
Flt	Chl	LCM	
6.8	6K	1.5#	

Survey @ 4444' = 1/2 Degree