

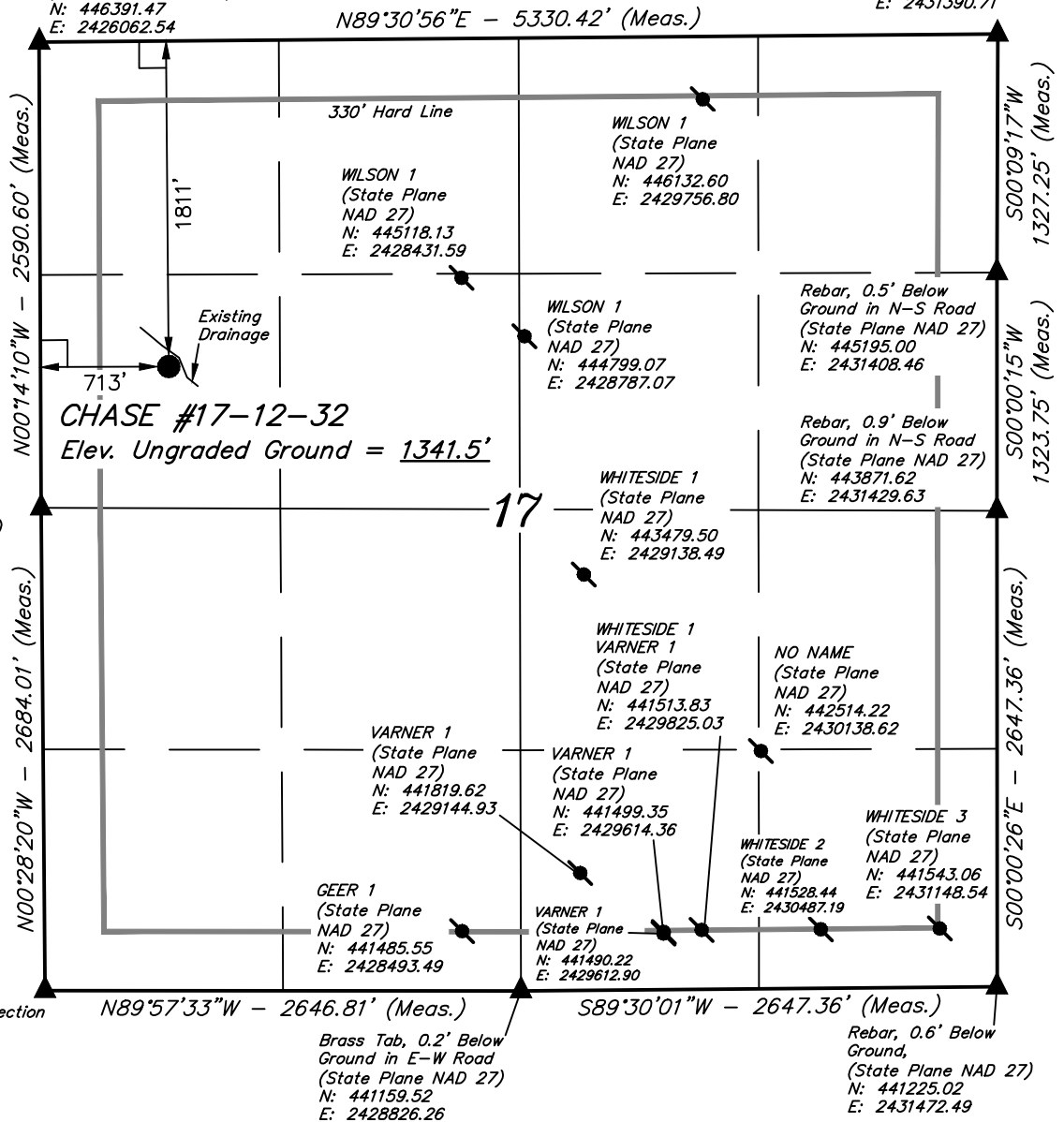
LEGEND:

- └ = 90° SYMBOL
- = PROPOSED WELLHEAD.
- ▲ = SECTION CORNERS LOCATED.
- ⊙ = EXISTING WELL

T25S, R4E, 6th P.M.

Brass Tab, 0.8' Below
Ground in N-S Road
(State Plane NAD 27)
N: 446391.47
E: 2426062.54

Rebar, 1.1' Below
Ground in N-S Road
(State Plane NAD 27)
N: 446521.93
E: 2431390.71



NAD 83 (SURFACE LOCATION)
LATITUDE = 37°52'42.35" (37.878431)
LONGITUDE = 97°01'17.35" (97.021486)
NAD 27 (SURFACE LOCATION)
LATITUDE = 37°52'42.29" (37.878414)
LONGITUDE = 97°01'16.23" (97.021175)
STATE PLANE NAD 27
N: 444598.87 E: 2426812.02

CERTIFICATE

THIS IS TO CERTIFY THAT THE ABOVE PLAT WAS PREPARED FROM FIELD NOTES OF ACTUAL SURVEYS MADE BY ME OR UNDER MY SUPERVISION AND THAT THE SAME ARE TRUE AND CORRECT TO THE BEST OF MY KNOWLEDGE AND BELIEF.

Robert Justin Penner

REGISTERED LAND SURVEYOR
REGISTRATION NO. 183
STATE OF KANSAS 07-14-14

BASIS OF BEARINGS
BASIS OF BEARINGS IS A G.P.S. OBSERVATION

BASIS OF ELEVATION

BENCH MARK (EL DORADO) LOCATED IN THE SE 1/4 OF SECTION 3, T26S, R5E, 6TH P.M., TAKEN FROM THE EL DORADO, QUADRANGLE, KANSAS, 7.5 MINUTE QUAD. TOPOGRAPHIC MAP) PUBLISHED BY THE UNITED STATES DEPARTMENT OF THE INTERIOR, GEOLOGICAL SURVEY. SAID ELEVATION OBTAINED FROM THE NGS DATA SHEET NAVD 88 IS 1344.12 FEET.

Source Energy Midcon, LLC

CHASE #17-12-32
SW 1/4 NW 1/4, SECTION 17, T25S, R4E, 6th P.M.
BUTLER COUNTY, KANSAS

SURVEYED BY: J.P., C.B.	SURVEY DATE: 07-15-14
DRAWN BY: S.S.	DATE DRAWN: 07-22-14
SCALE: 1" = 1000'	REVISED: 00-00-00

WELL LOCATION PLAT



UELS, LLC
Corporate Office * 85 South 200 East
Vernal, UT 84078 * (435) 789-1017

