



**COMPLETION
& PRODUCTION
SERVICES CO.**

**DUAL
INDUCTION
LOG**

Company PRAIRIE FIRE PETROLEUM, LLC.
Well POAGE #1-10
Field WILDCAT
County NORTON
State KANSAS

Company PRAIRIE FIRE PETROLEUM, LLC.
Well POAGE #1-10
Field WILDCAT
County NORTON State KANSAS

Location: API # : 15-137-20702-0000
470' FSL & 1440' FWL
NW - SW - SE - SW
SEC 10 TWP 2S RGE 21W
Permanent Datum GROUND LEVEL Elevation 2160
Log Measured From KELLY BUSHING 10' A.G.L.
Drilling Measured From KELLY BUSHING
Other Services
CDL/CNL
MEL/SON
Elevation
K.B. 2170
D.F. 2168
G.L. 2160

Date	6/28/14
Run Number	ONE
Depth Driller	3852
Depth Logger	3859
Bottom Logged Interval	3857
Top Log Interval	0
Casing Driller	8 5/8" @ 222
Casing Logger	222
Bit Size	7 7/8"
Type Fluid in Hole	CHEMICAL MUD
Density / Viscosity	9.163
pH / Fluid Loss	11.0/6.4
Source of Sample	FLOWLINE
Rm @ Meas. Temp	1.70 @ 83F
Rmt @ Meas. Temp	1.28 @ 83F
Rmc @ Meas. Temp	2.04 @ 83F
Source of Rmf / Rmc	MEASUREMENT
Rm @ BHT	1.23 @ 115F
Time Circulation Stopped	2 HOURS
Time Logger on Bottom	
Maximum Recorded Temperature	115F
Equipment Number	4010
Location	HAYS, KANSAS
Recorded By	JEFF GRONWEG
Witnessed By	STEVE MURPHY

<<< Fold Here >>>

All interpretations are opinions based on inferences from electrical or other measurements and we cannot and do not guarantee the accuracy or correctness of any interpretation, and we shall not, except in the case of gross or willful negligence on our part, be liable or responsible for any loss, costs, damages, or expenses incurred or sustained by anyone resulting from any interpretation made by any of our officers, agents or employees. These interpretations are also subject to our general terms and conditions set out in our current Price Schedule.

Comments

THANK YOU FOR USING NABORS, HAYS, KS. (785) 628-6395
DIRECTIONS:
NORTON, KS - EAST TO RD 12E - 4 MILES NORTH - 1/2 MILE WEST
NORTH INTO

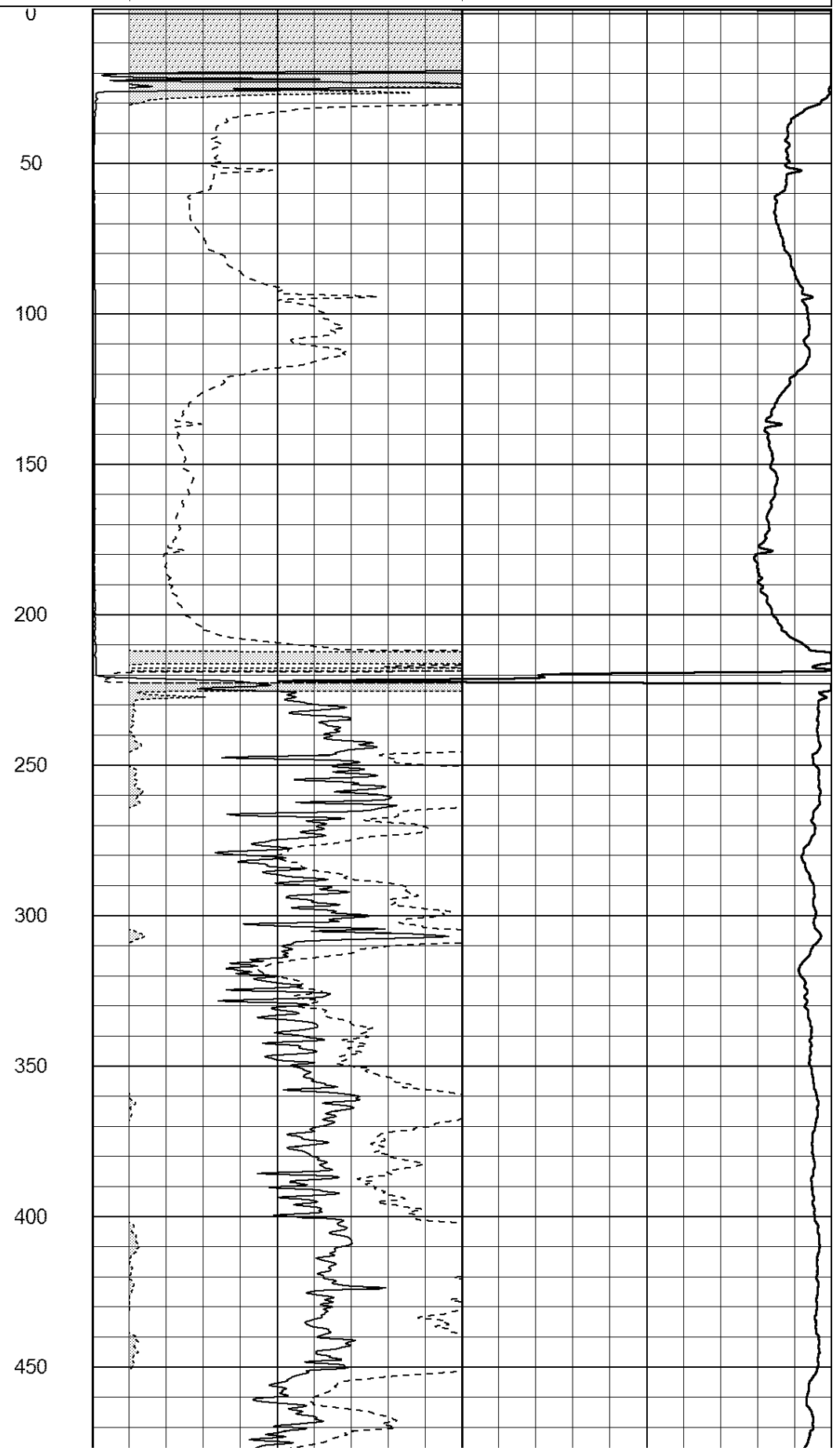
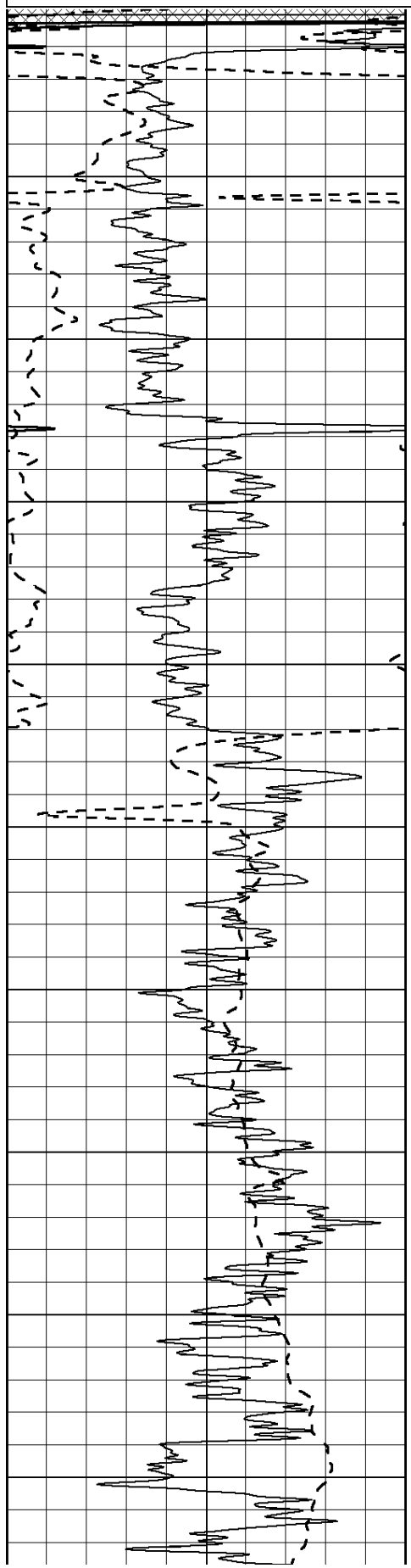
Database File: 24641ddn.db
Dataset Pathname: pass3.2
Presentation Format: _dil2
Dataset Creation: Sat Jun 28 02:21:52 2014 by Calc Open-Cased 090629
Charted by: Depth in Feet scaled 1:600

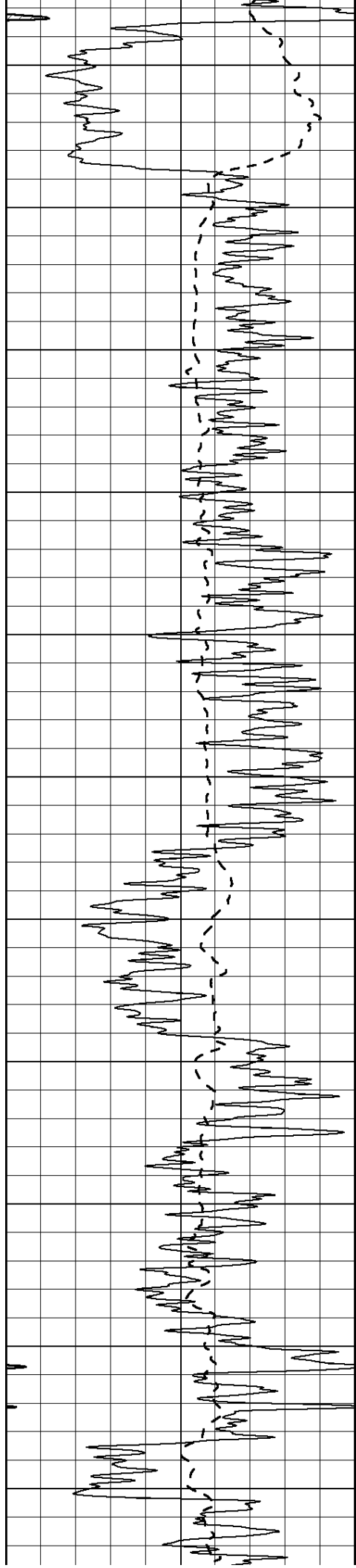
0	Gamma Ray (GAPI)	150
-100	SP (mV)	100

0	RLL3 (Ohm-m)	50
0	RILD (Ohm-m)	50

1000	CILD (mmho/m)	0
------	---------------	---

50	RILD X10 (Ohm-m)	500
50	RLL3 X10 (Ohm-m)	500





500

550

600

650

700

750

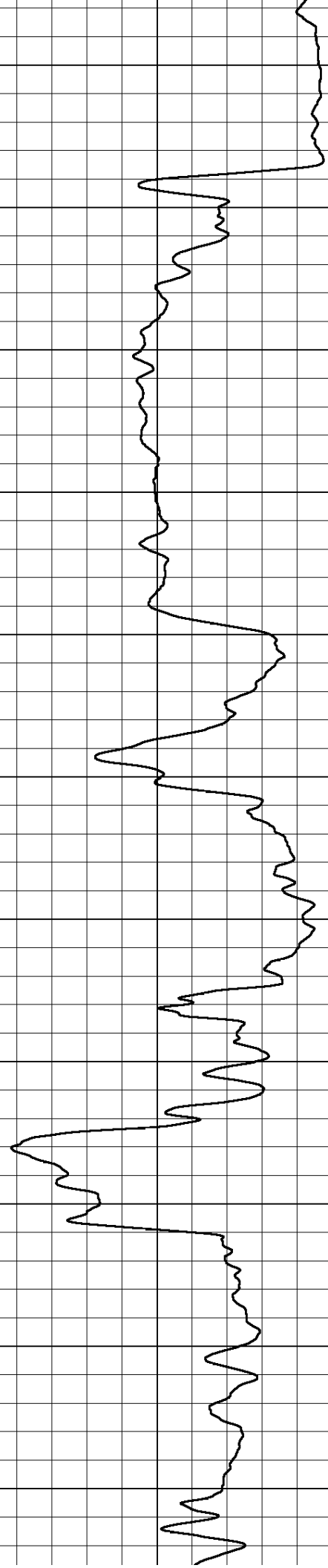
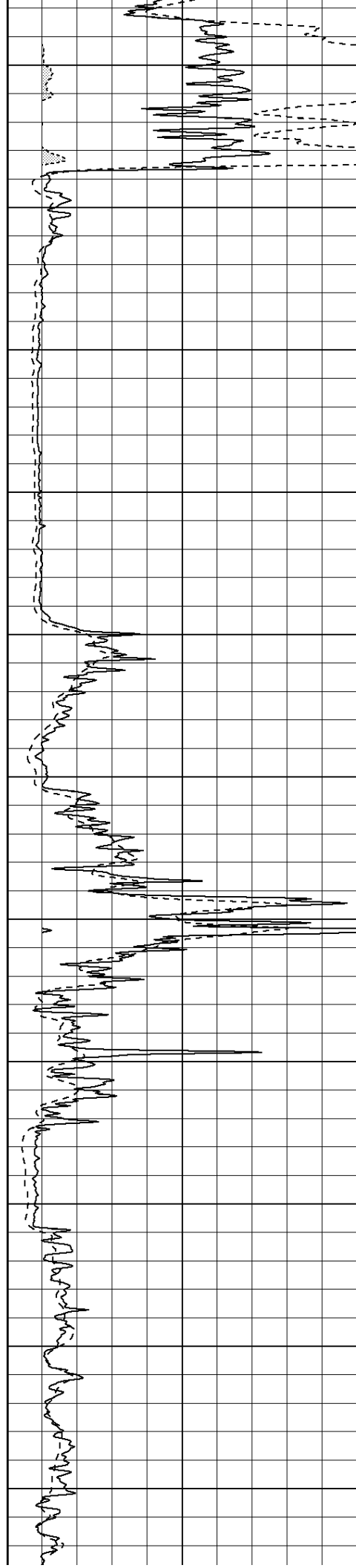
800

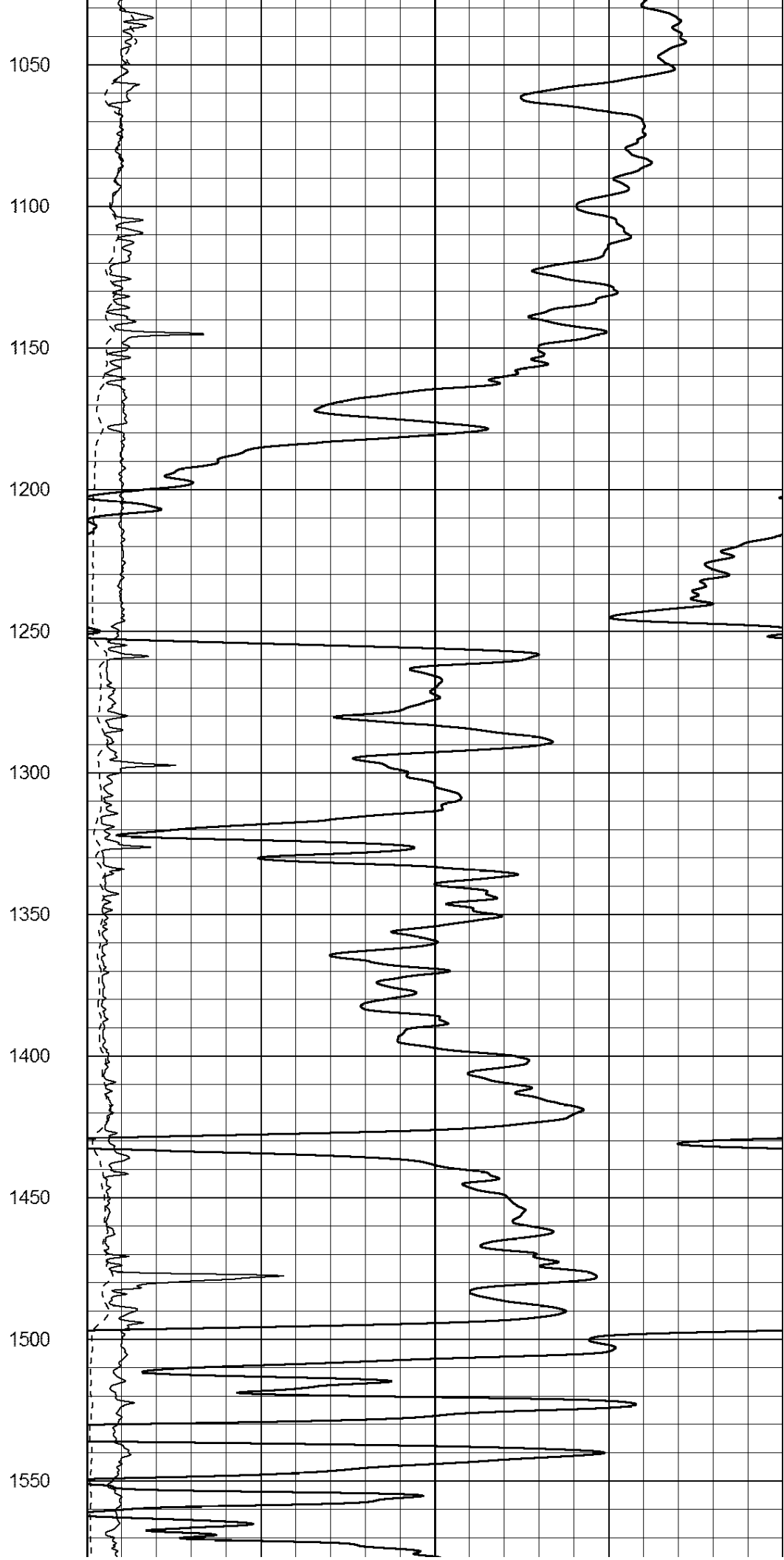
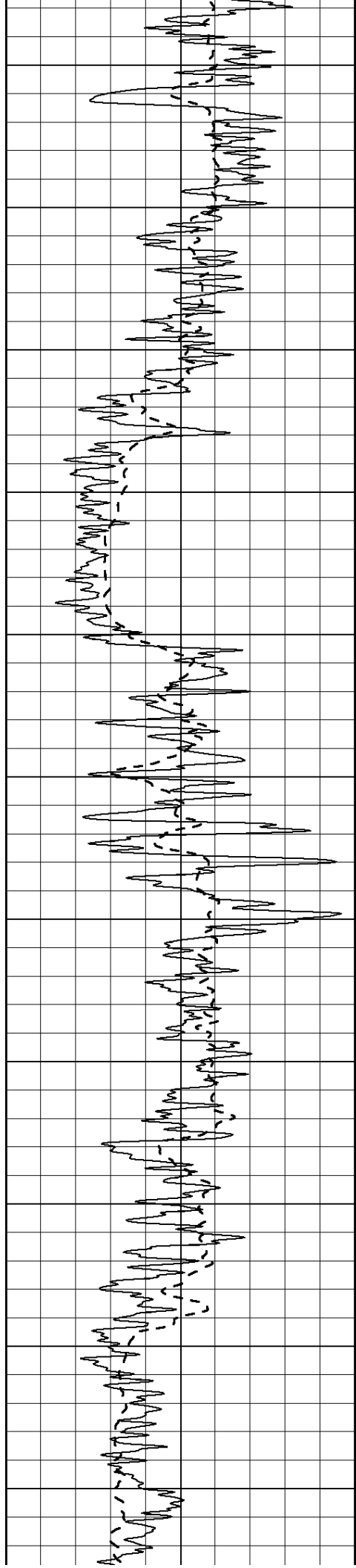
850

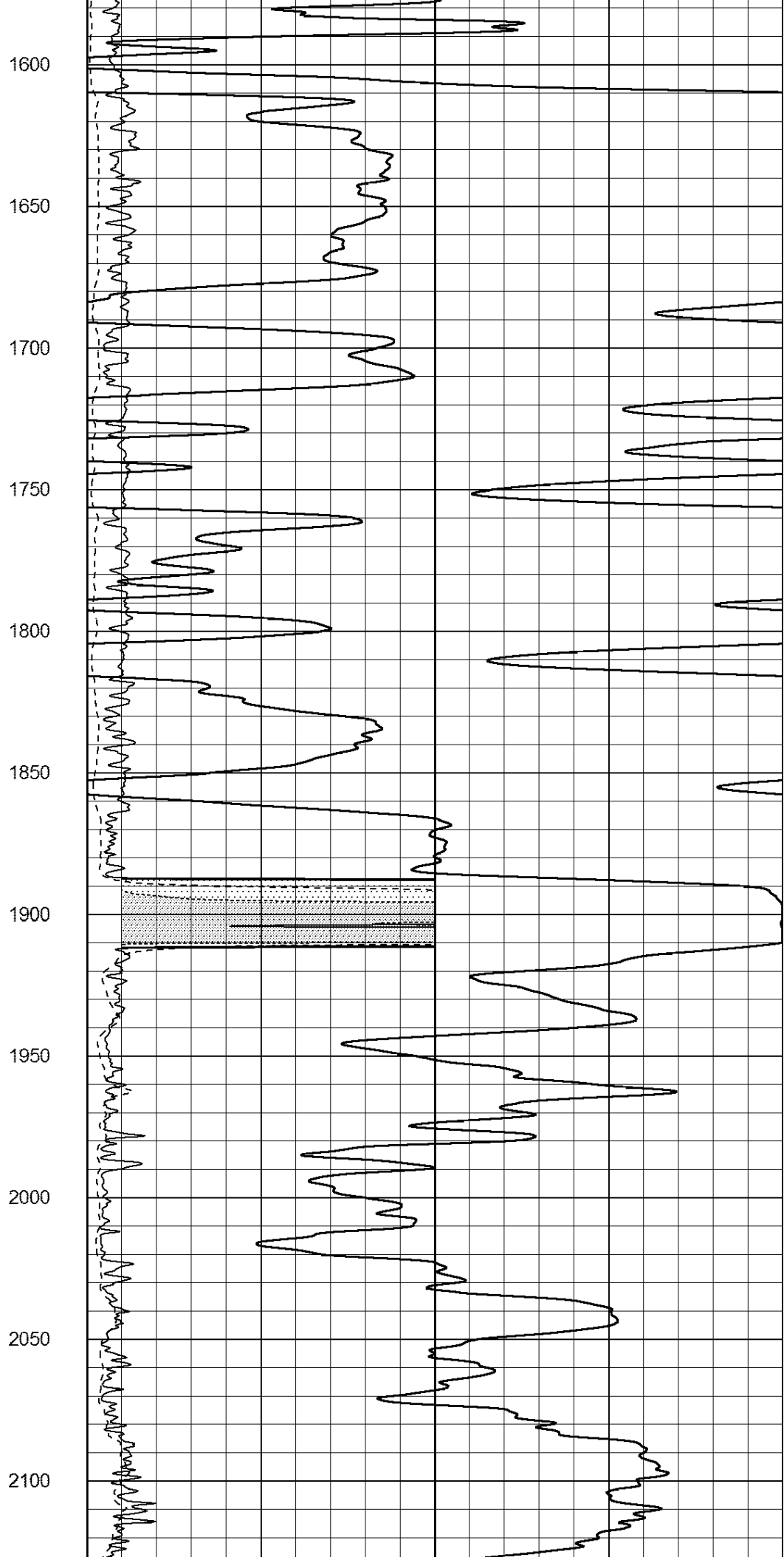
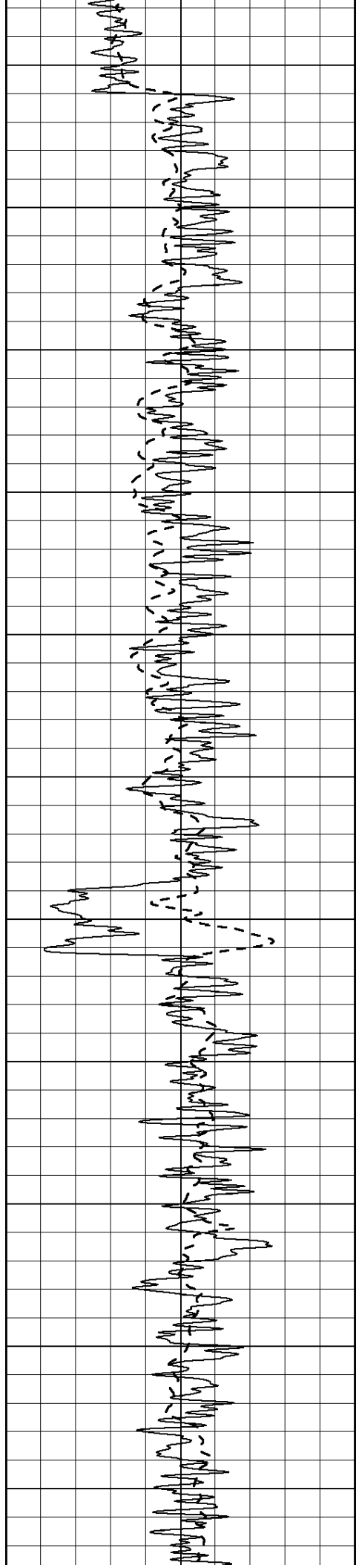
900

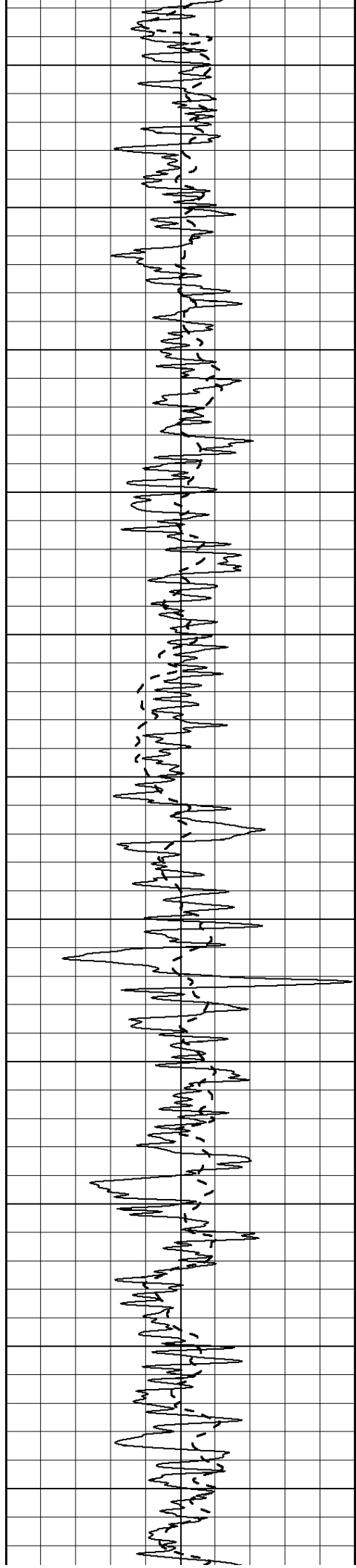
950

1000









2150

2200

2250

2300

2350

2400

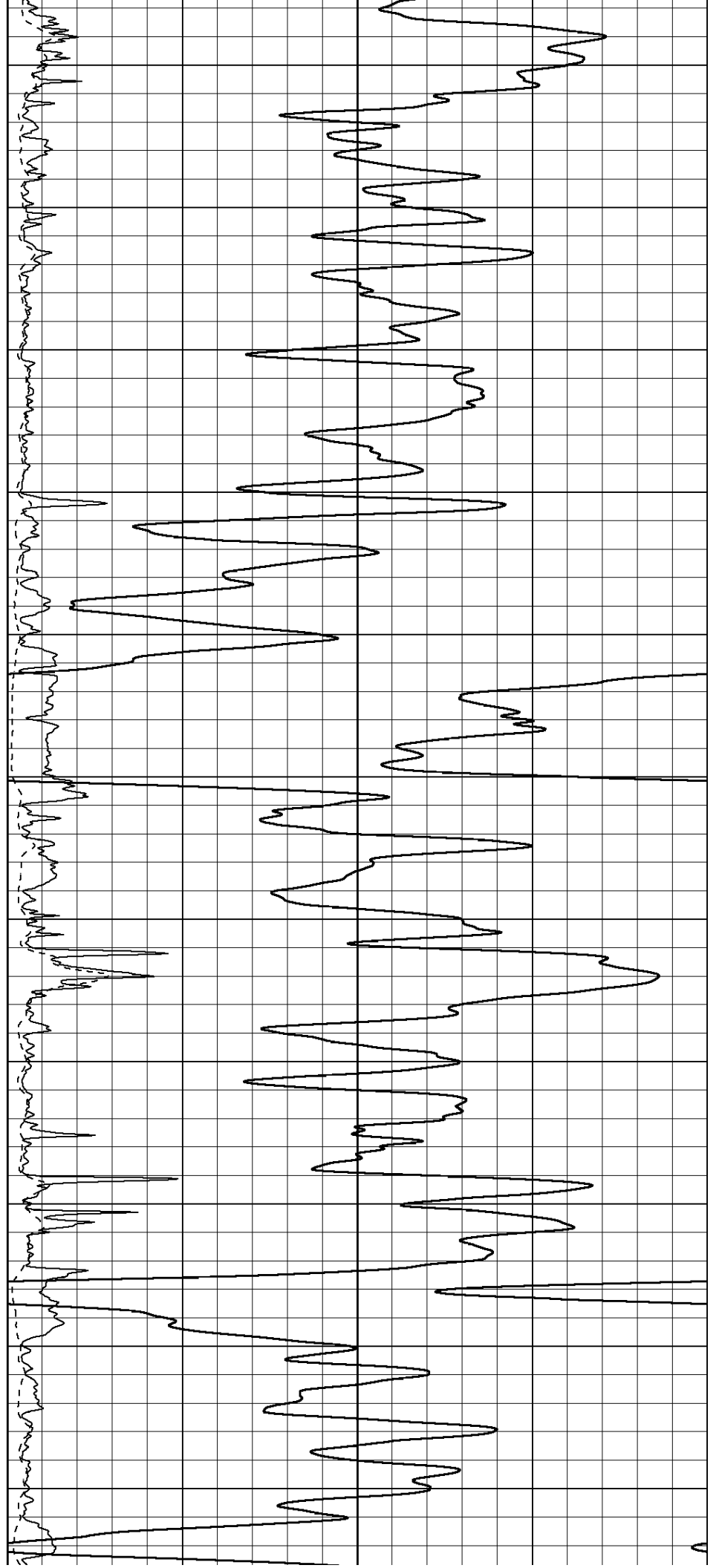
2450

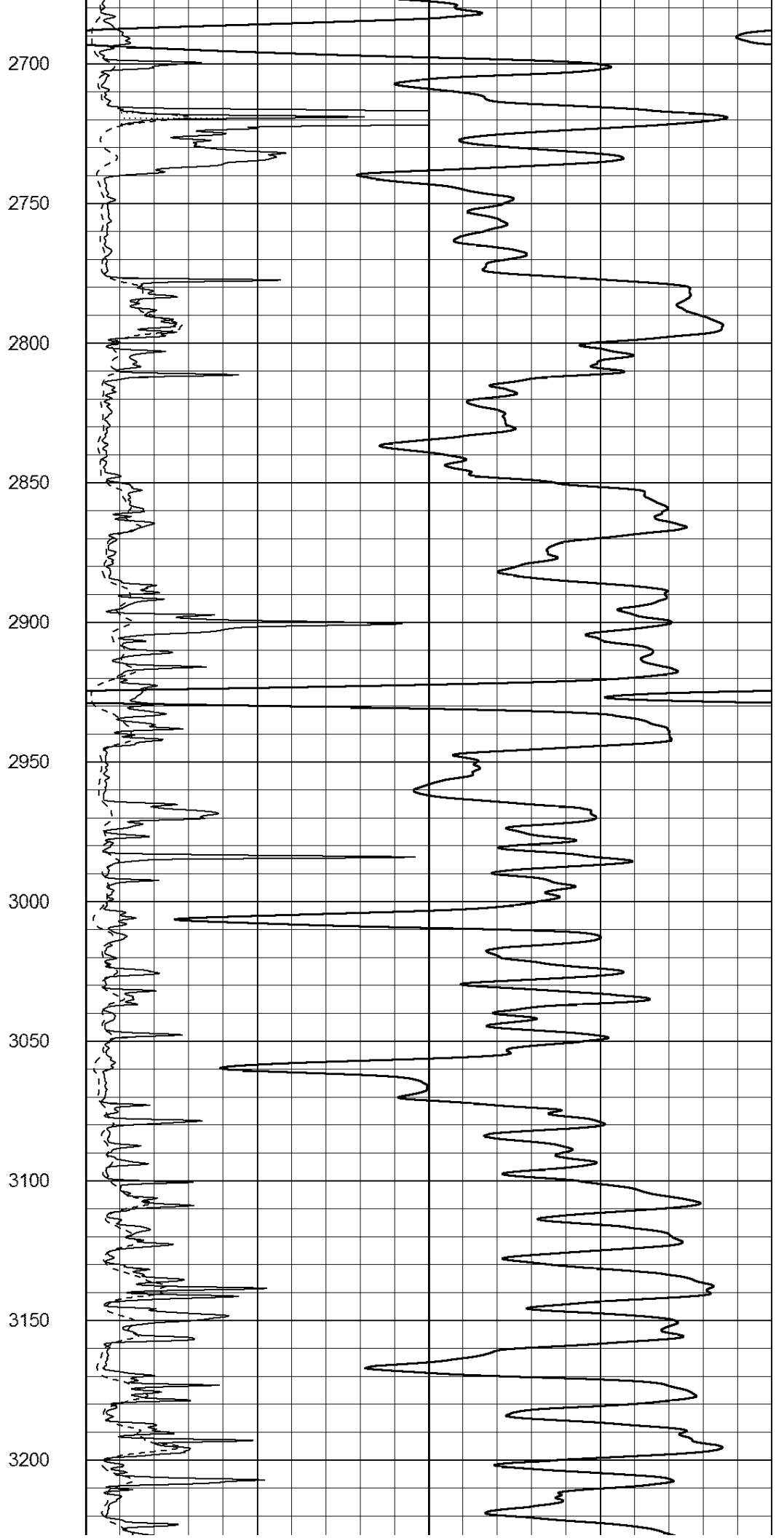
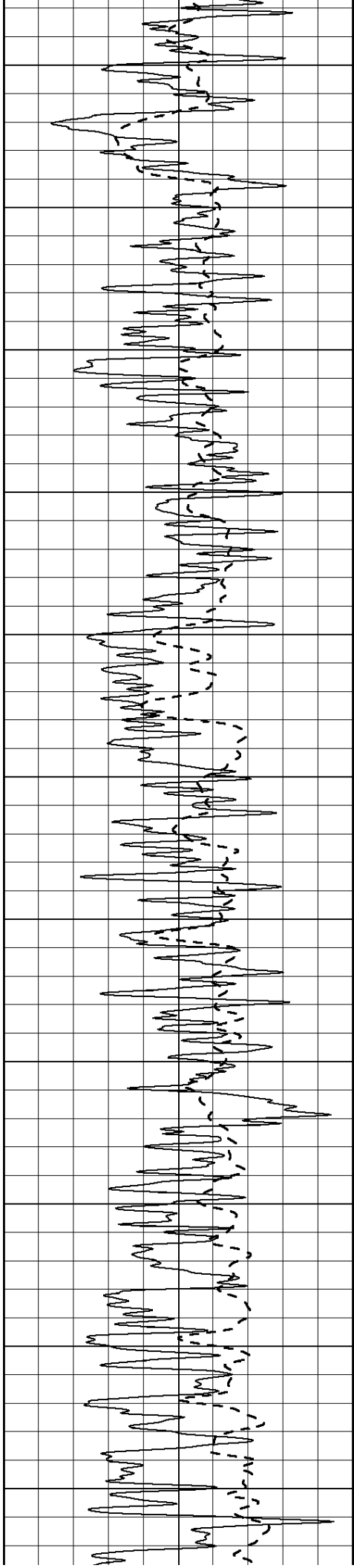
2500

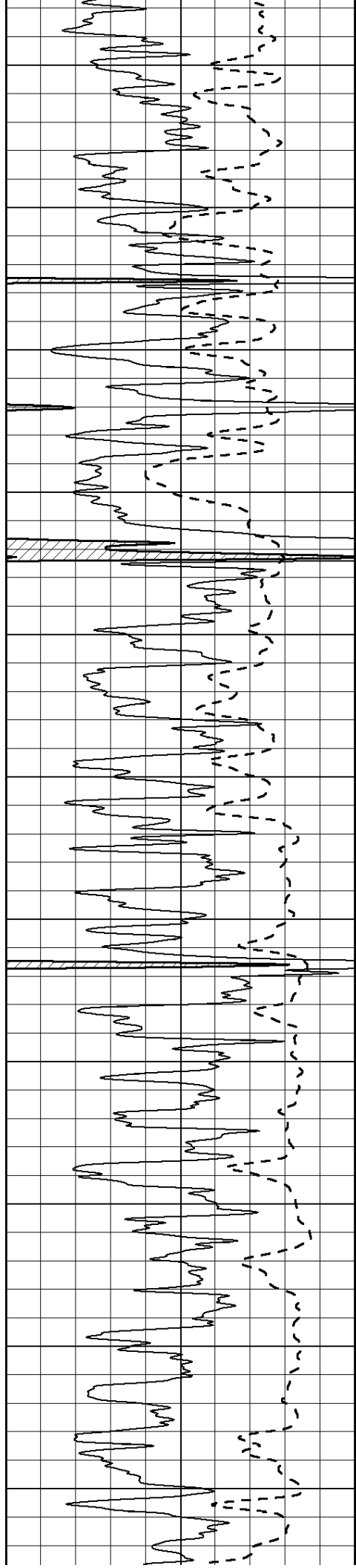
2550

2600

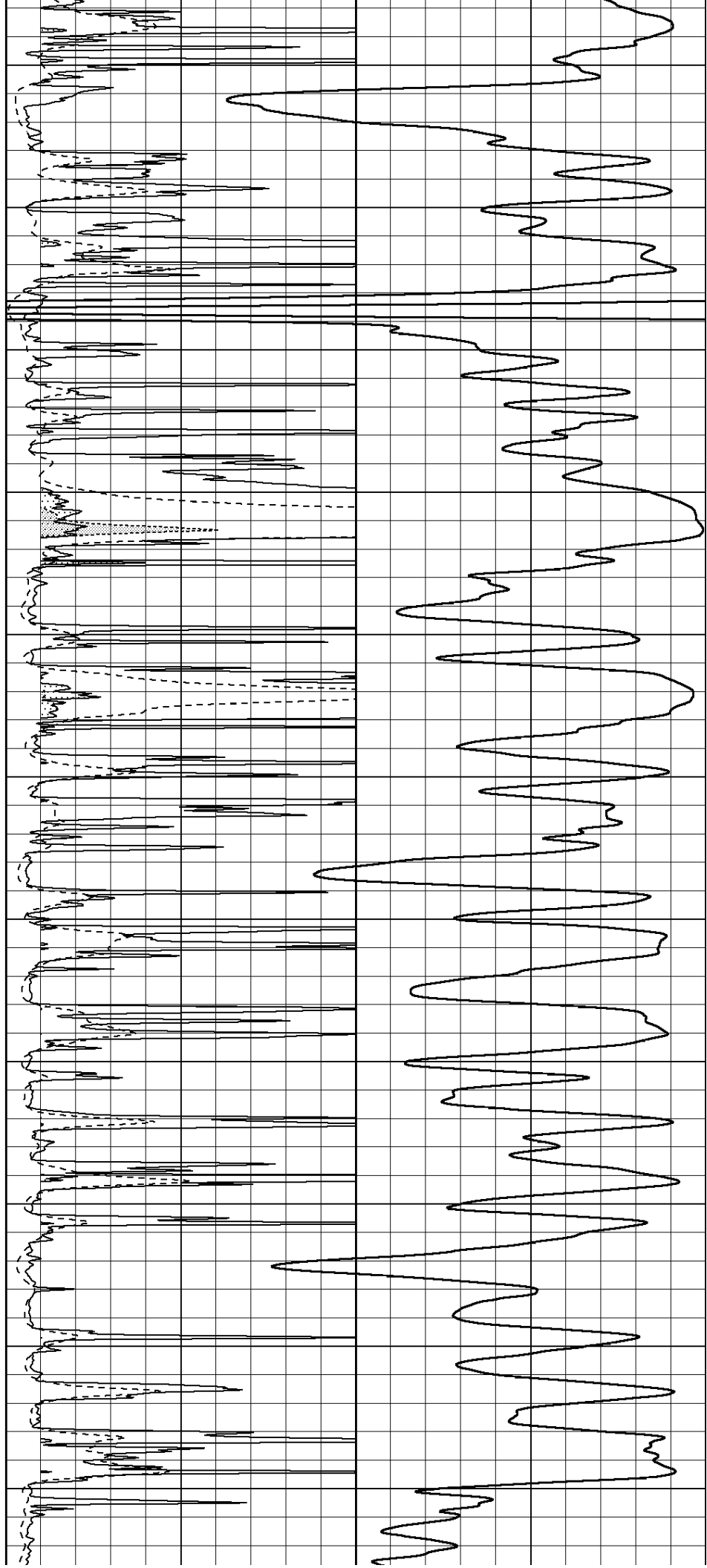
2650

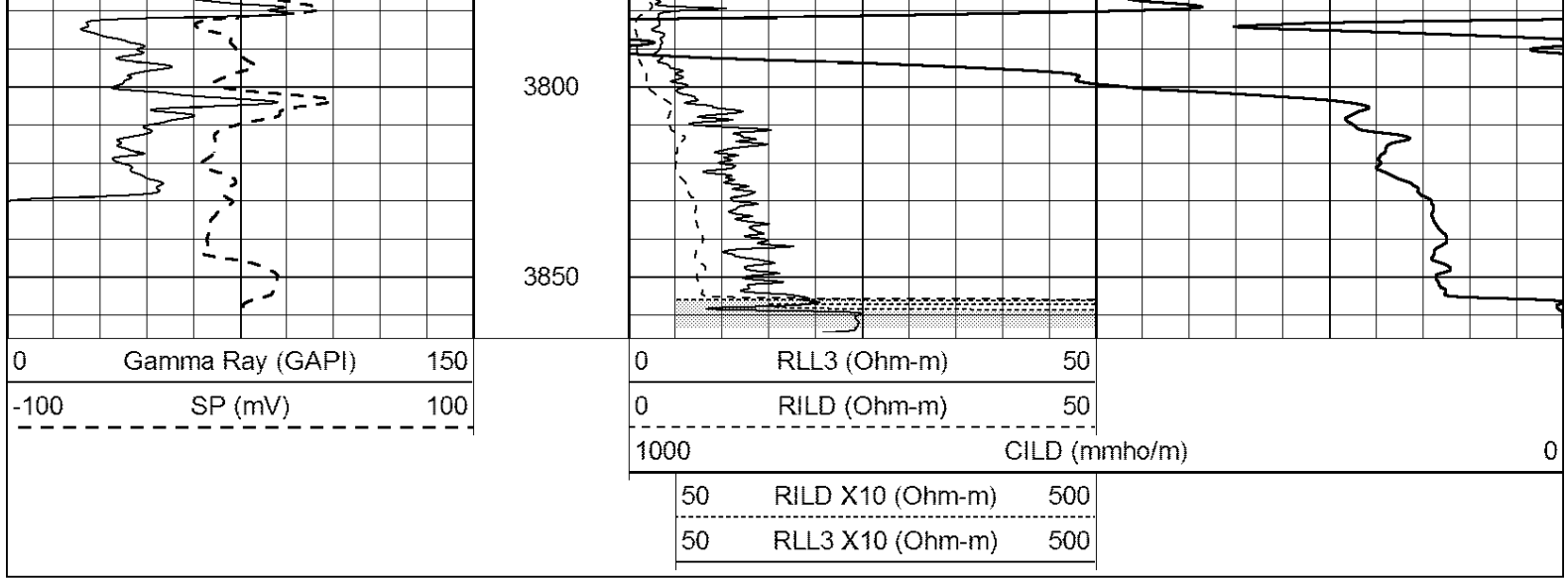




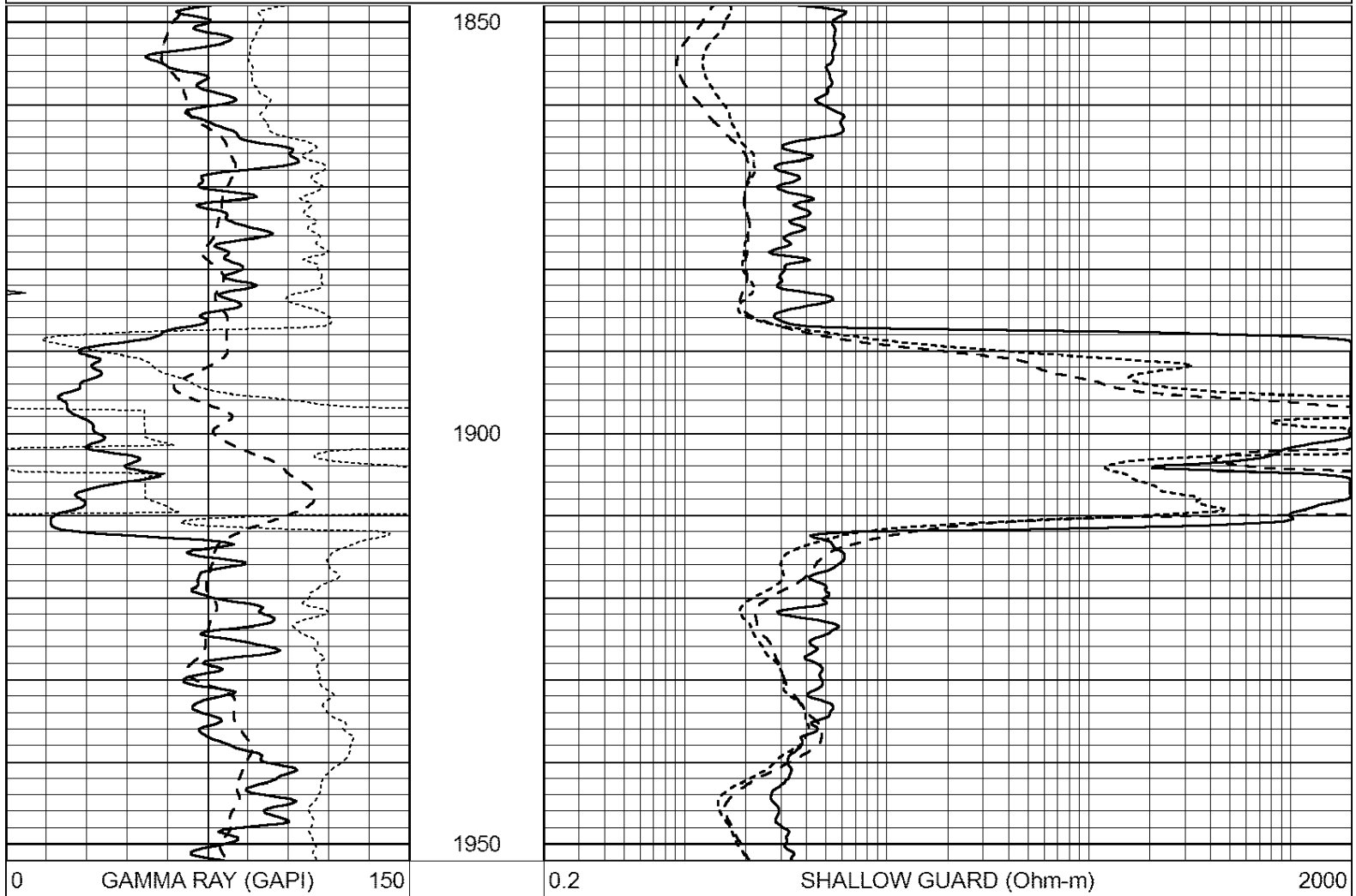
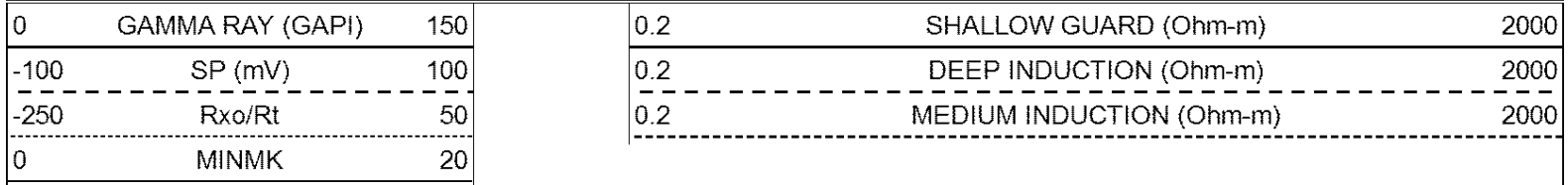


3250
3300
3350
3400
3450
3500
3550
3600
3650
3700
3750





Database File: 24641ddn.db
 Dataset Pathname: pass3.2
 Presentation Format: _dil
 Dataset Creation: Sat Jun 28 02:21:52 2014 by Calc Open-Cased 090629
 Charted by: Depth in Feet scaled 1:240



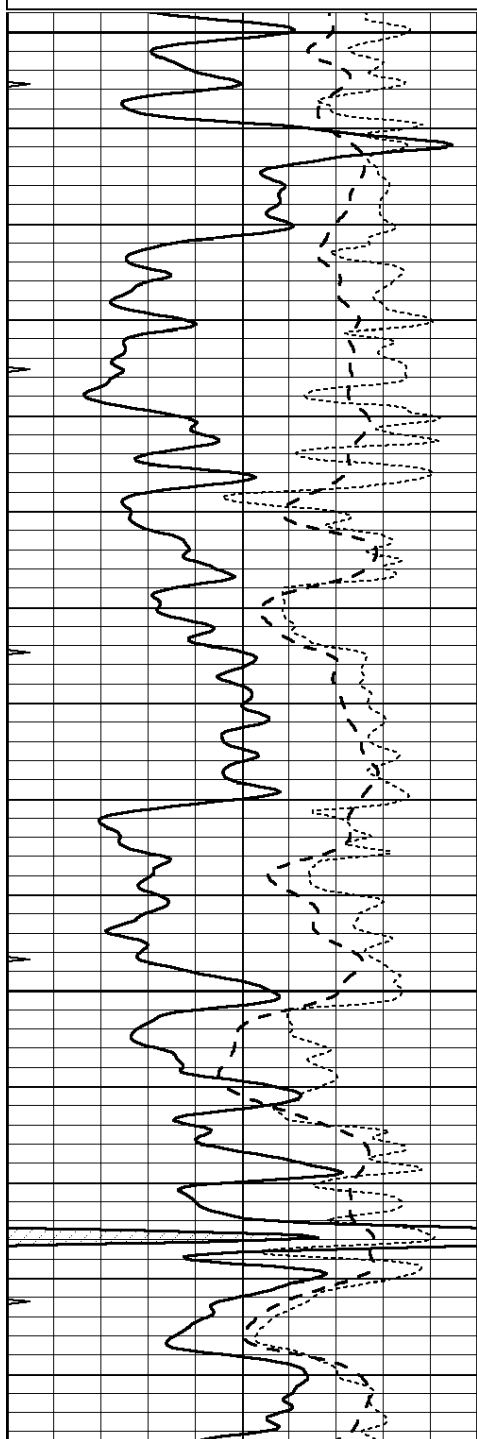
-100	SP (mV)	100
-250	Rxo/Rt	50
0	MINMK	20

0.2	DEEP INDUCTION (Ohm-m)	2000
0.2	MEDIUM INDUCTION (Ohm-m)	2000

Database File: 24641ddn.db
 Dataset Pathname: pass3.1
 Presentation Format: _dil
 Dataset Creation: Sat Jun 28 00:49:50 2014 by Calc Open-Cased 090629
 Charted by: Depth in Feet scaled 1:240

0	GAMMA RAY (GAPI)	150
-100	SP (mV)	100
-250	Rxo/Rt	50
0	MINMK	20

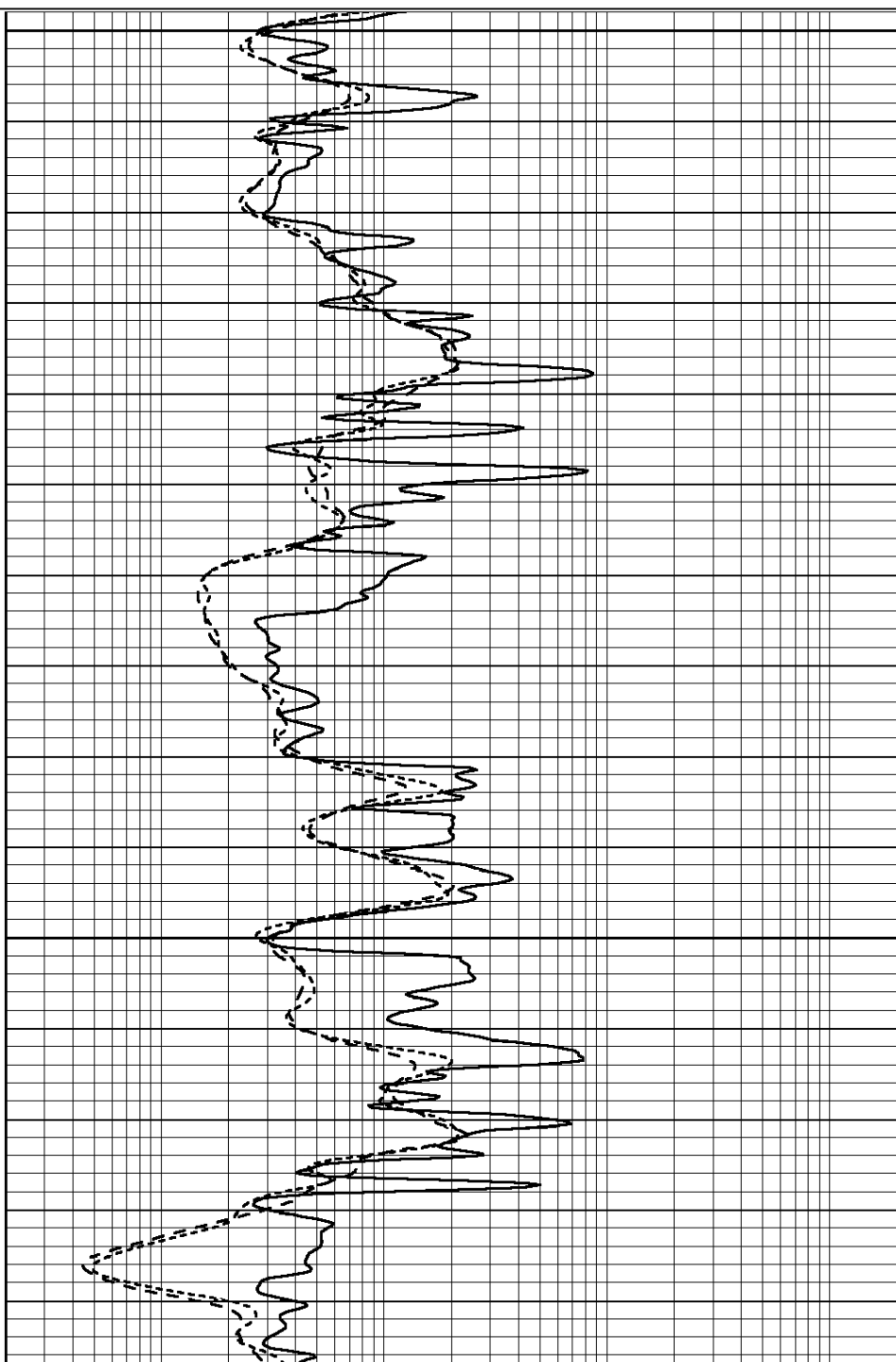
0.2	SHALLOW GUARD (Ohm-m)	2000
0.2	DEEP INDUCTION (Ohm-m)	2000
0.2	MEDIUM INDUCTION (Ohm-m)	2000

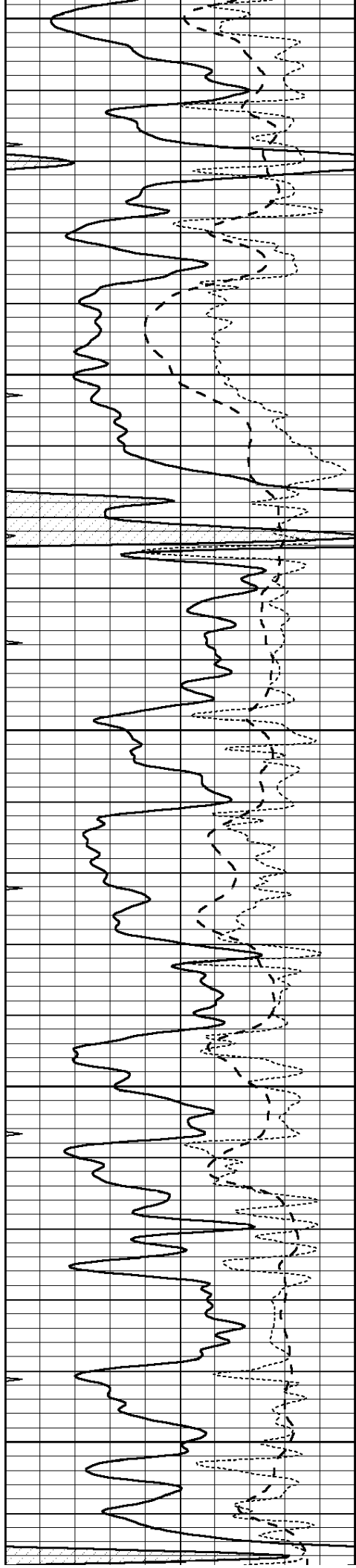


3200

3250

3300





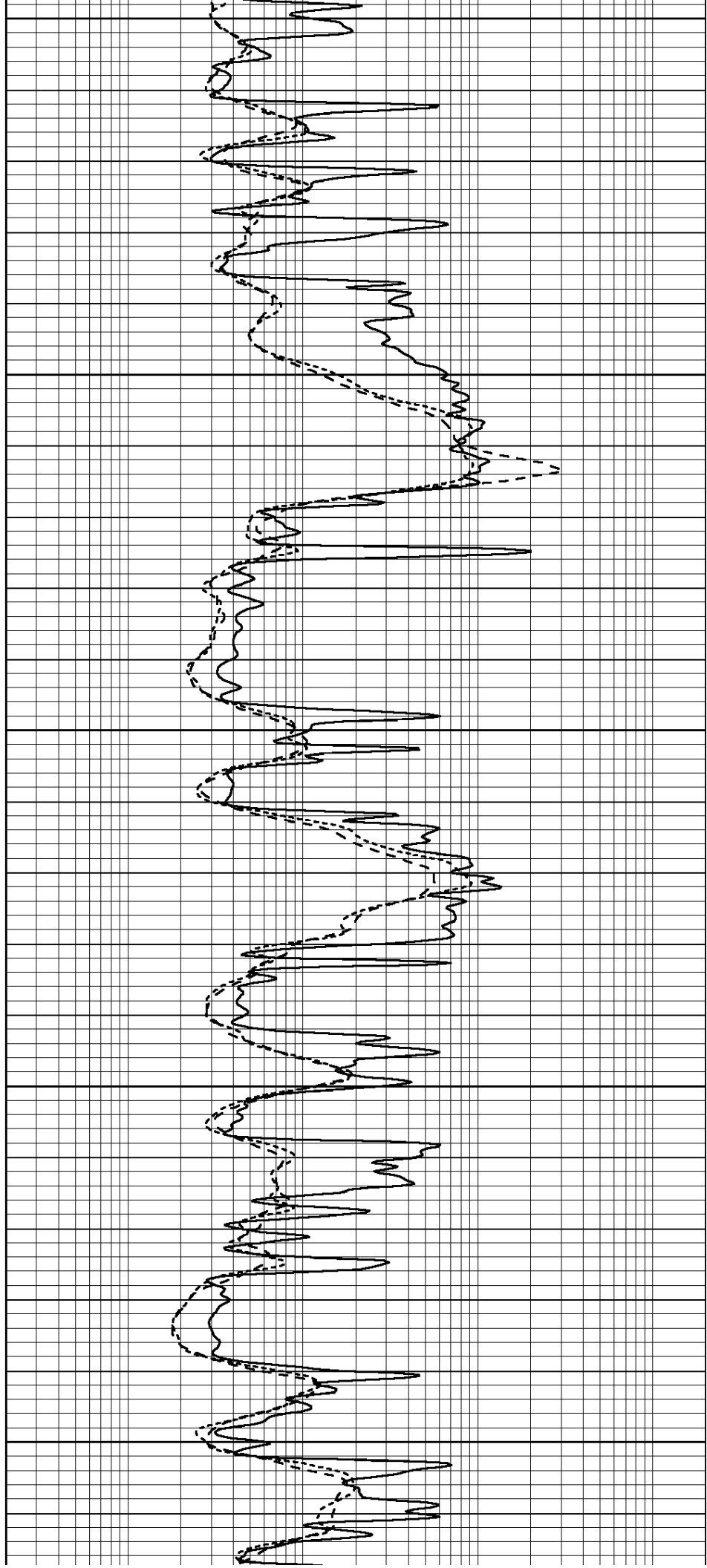
3350

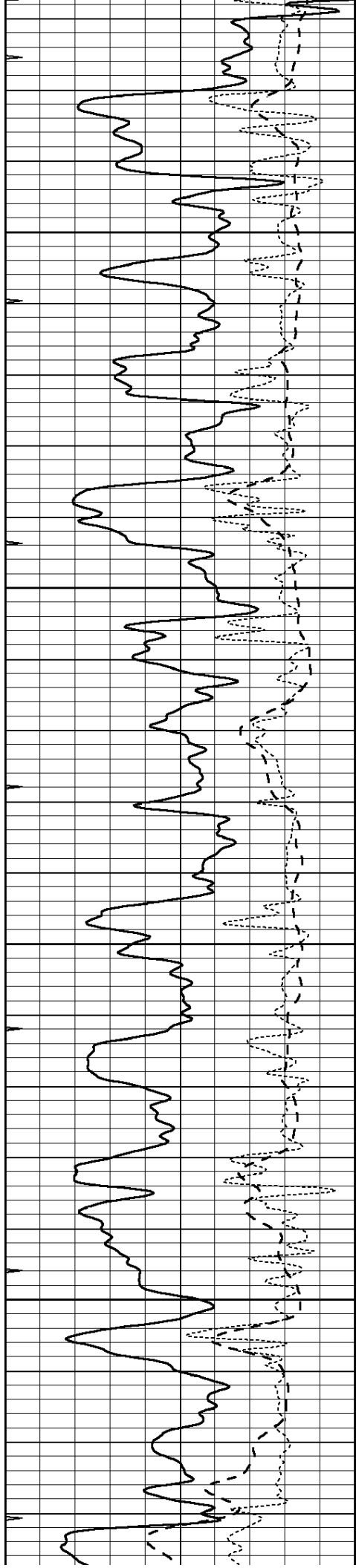
3400

3450

3500

3550



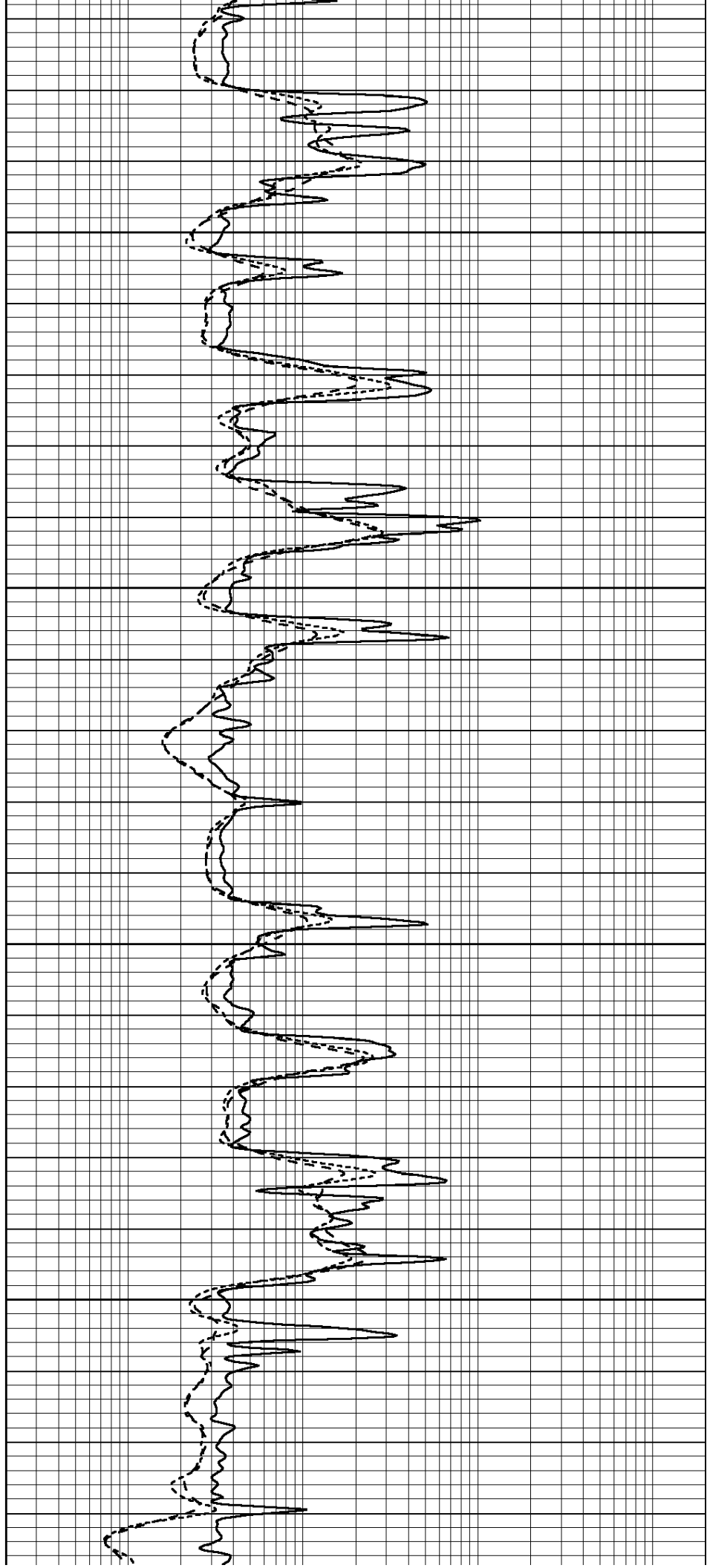


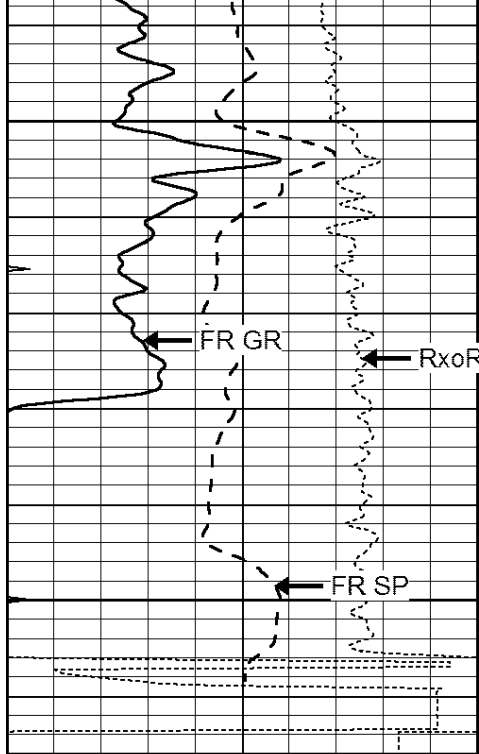
3600

3650

3700

3750





3800

FR GR

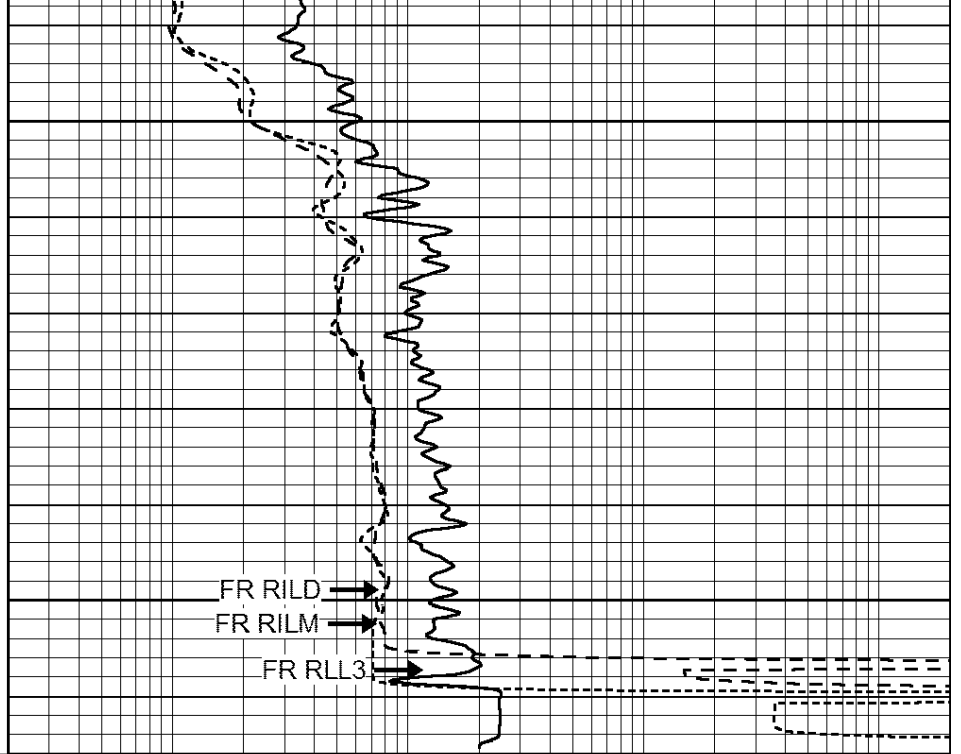
RxoRt

FR SP

3850

LTD 3859

0	GAMMA RAY (GAPI)	150
-100	SP (mV)	100
-250	Rxo/Rt	50
0	MINMK	20



FR RILD

FR RILM

FR RLL3

0.2	SHALLOW GUARD (Ohm-m)	2000
0.2	DEEP INDUCTION (Ohm-m)	2000
0.2	MEDIUM INDUCTION (Ohm-m)	2000

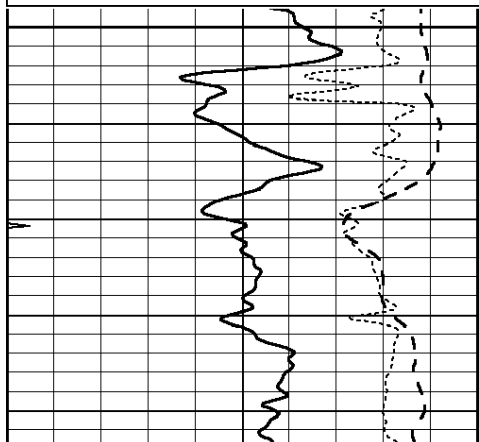


REPEAT SECTION

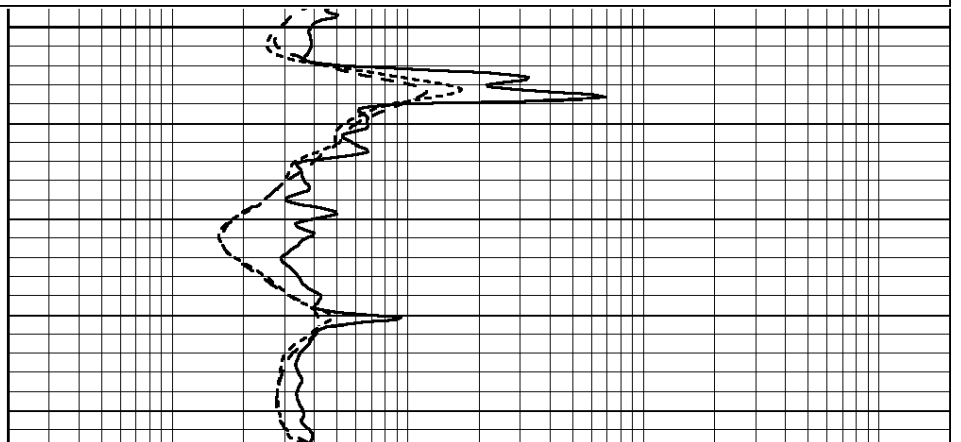
Database File: 24641ddn.db
 Dataset Pathname: pass2
 Presentation Format: _dil
 Dataset Creation: Sat Jun 28 00:10:45 2014 by Log Open-Cased 090629
 Charted by: Depth in Feet scaled 1:240

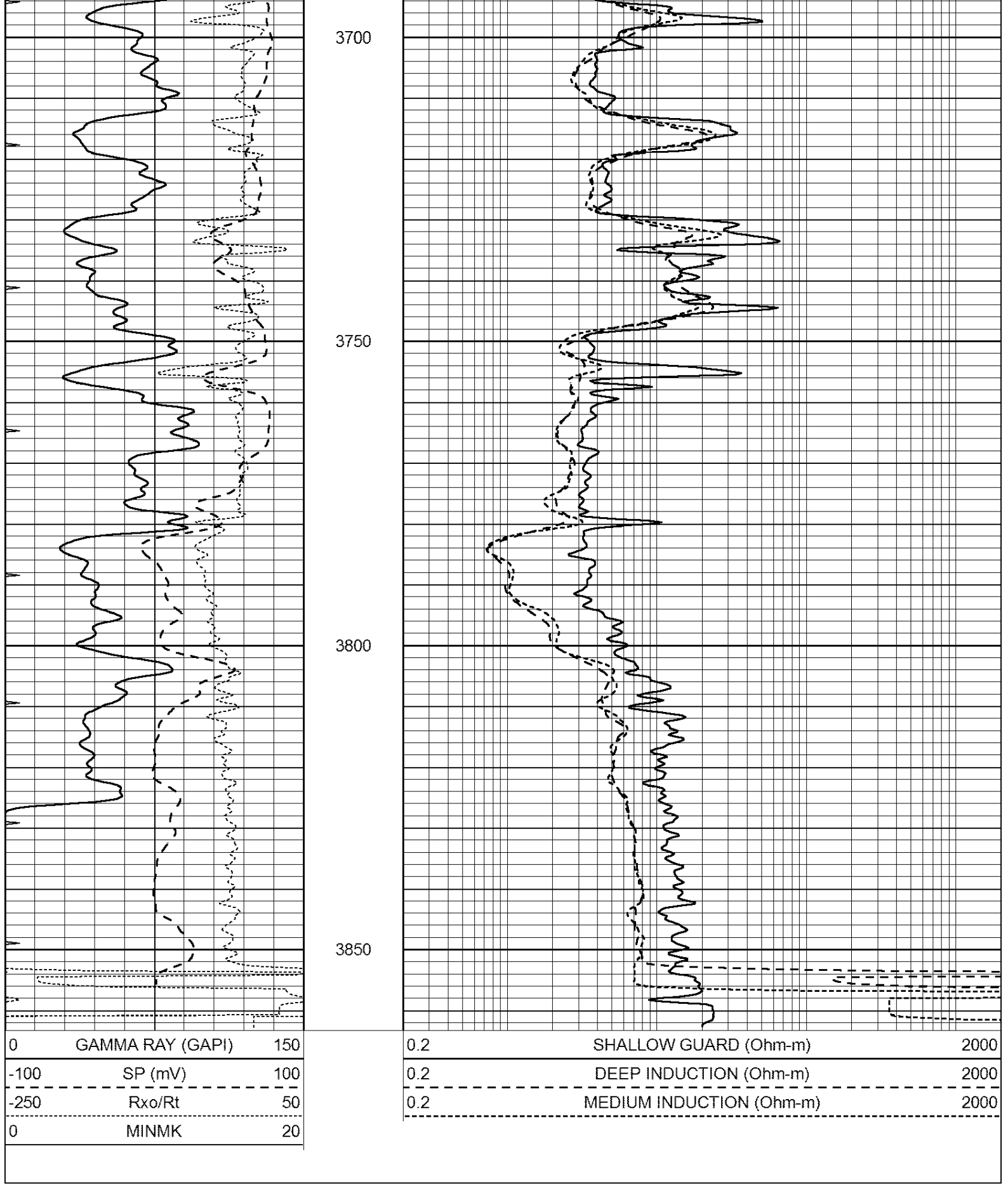
0	GAMMA RAY (GAPI)	150
-100	SP (mV)	100
-250	Rxo/Rt	50
0	MINMK	20

0.2	SHALLOW GUARD (Ohm-m)	2000
0.2	DEEP INDUCTION (Ohm-m)	2000
0.2	MEDIUM INDUCTION (Ohm-m)	2000



3650





Calibration Report

Database File: 24641ddn.db
 Dataset Pathname: pass3.2
 Dataset Creation: Sat Jun 28 02:21:52 2014 by Calc Open-Cased 090629

Serial-Model: PROBE8-DILG
 Surface Cal Performed: Fri Aug 01 06:33:19 2008
 Downhole Cal Performed: Mon Jul 28 11:08:27 2008
 After Survey Verification Performed: Mon Jul 28 11:08:27 2008

Surface Calibration

Readings				References			Results	
Loop:	Air	Loop		Air	Loop		m	b
Deep	0.015	0.648	V	0.000	400.000	mmho/m	632.616	-9.730
Medium	0.029	0.796	V	0.000	464.000	mmho/m	605.049	-17.680
Internal:	Zero	Cal		Zero	Cal		m	b
Deep	0.017	0.657	V	0.000	400.000	mmho/m	625.153	-10.619
Medium	0.016	0.757	V	0.000	464.000	mmho/m	625.992	-9.739

Downhole Calibration

Readings				References			Results	
	Zero	Cal		Zero	Cal		m'	b'
Deep	0.000	0.000	mmho/m	2.011	405.777	mmho/m	1.000	0.000
Medium	0.000	0.000	mmho/m	7.590	503.393	mmho/m	1.000	0.000
LL3		7.500	V		1500.000	Ohm-m		
		0.000	V		20.000	Ohm-m		
		-7.200	V		3800.000	mmho-m		

After Survey Verification

Readings				Targets			Results	
	Zero	Cal		Zero	Cal		m'	b'
Deep	0.000	0.000	mmho/m	0.000	0.000	mmho/m	0.000	0.000
Medium	0.000	0.000	mmho/m	0.000	0.000	mmho/m	0.000	0.000
LL3		1.000	Ohm-m		1.000	Ohm-m		
		0.000	Ohm-m		0.000	Ohm-m		
		1.000	mmho-m		1.000	mmho-m		

Compensated Density Calibration Report

Serial-Model: GEAR3-GEARHART
 Source / Verifier: 143 / 143
 Master Calibration Performed: Fri Jan 04 15:48:16 2013
 Before Survey Verification Performed:
 After Survey Verification Performed:

Master Calibration

	Density		Far Detector	Near Detector	
Magnesium	1.710	g/cc	935.36	501.55	cps
Aluminum	2.580	g/cc	209.32	357.01	cps
Spine Angle = 77.21			Density/Spine Ratio = 0.567		
	Size		Reading		
Small Ring	8.00	in	4.29	V	
Large Ring	14.00	in	6.24	V	

Before Survey Verification

	Target		Measured	
		g/cc		g/cc
		g/cc		g/cc
		g/cc		g/cc

After Survey Verification		g/cc	g/cc
Target		Measured	
	g/cc		g/cc
	g/cc		g/cc
	g/cc		g/cc

Compensated Neutron Calibration Report

Serial Number: 6I
 Tool Model: G

CALIBRATION						
Detector	Readings		Target		Normalization	
Short Space	1.00	cps	1.00	cps	1.0000	
Long Space	1.00	cps	1.00	cps	1.0000	

PRE-SURVEY VERIFICATION						
Detector	Readings		Measured		Target	
1) Short Space		cps				
Long Space		cps		pu		pu
2) Short Space		cps				
Long Space		cps		pu		
3) Short Space		cps				
Long Space		cps		pu		

POST-SURVEY VERIFICATION						
Detector	Readings		Measured		Target	
1) Short Space		cps				
Long Space		cps		pu		pu
2) Short Space		cps				
Long Space		cps		pu		pu
3) Short Space		cps				
Long Space		cps		pu		pu

Gamma Ray Calibration Report

Serial Number: GR6
 Tool Model: OPEN
 Performed: Sat May 31 01:22:06 2014

Calibrator Value: 150.0 GAPI

Background Reading: 0.0 cps
 Calibrator Reading: 276.0 cps

Sensitivity: 0.7535 GAPI/cps