



**TRILOBITE
TESTING, INC**

DRILL STEM TEST REPORT

Woolsey Operating Co

12-35S-13W Barber

125 N Market STE 1000
Wichita, KS 67202

MAC 1

Job Ticket: 51896

DST#: 3

ATTN: Bill Klaver

Test Start: 2014.04.07 @ 18:44:16

GENERAL INFORMATION:

Formation: **Misener**

Deviated: No Whipstock: ft (KB)

Time Tool Opened: 20:54:01

Time Test Ended: 03:24:01

Test Type: Conventional Bottom Hole (Initial)

Tester: Gary Pevoteaux

Unit No: 56

Interval: 5200.00 ft (KB) To 5315.00 ft (KB) (TVD)

Reference Elevations: 1469.00 ft (KB)

Total Depth: 5315.00 ft (KB) (TVD)

1457.00 ft (CF)

Hole Diameter: 7.88 inches Hole Condition: Fair

KB to GR/CF: 12.00 ft

Serial #: 8352 Inside

Press@RunDepth: 203.40 psig @ 5201.00 ft (KB)

Capacity: 8000.00 psig

Start Date: 2014.04.07

End Date:

2014.04.08

Last Calib.:

2014.04.08

Start Time:

17:44:21

End Time:

02:24:01

Time On Btm:

2014.04.07 @ 19:52:46

Time Off Btm:

2014.04.07 @ 22:59:01

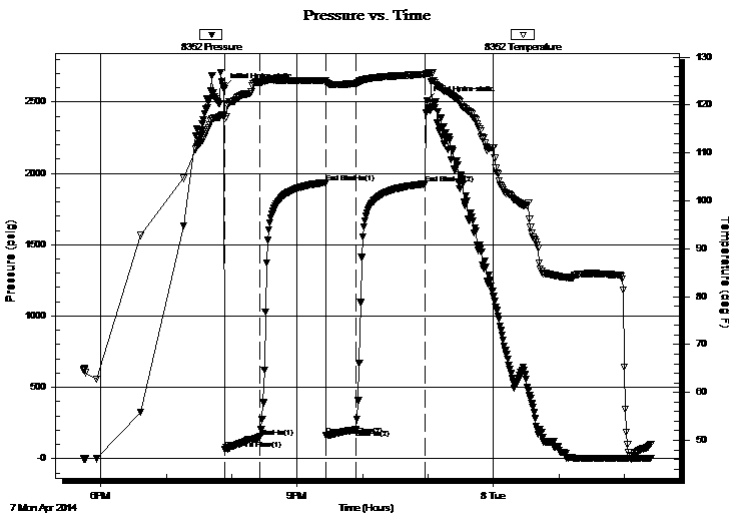
TEST COMMENT: IF:Strong blow . B.O.B. in 2 1/2 mins.

IS:No blow .

FF:Strong blow . B.O.B. in 14 mins.

FS:Weak blow . 1/2 - 1 1/2".

PRESSURE SUMMARY



Time (Min.)	Pressure (psig)	Temp (deg F)	Annotation
0	2600.54	118.05	Initial Hydro-static
2	68.05	117.11	Open To Flow (1)
33	150.43	124.79	Shut-In(1)
94	1936.43	125.10	End Shut-In(1)
94	162.96	124.62	Open To Flow (2)
122	203.40	124.52	Shut-In(2)
185	1926.23	126.37	End Shut-In(2)
187	2508.20	126.62	Final Hydro-static

Recovery

Length (ft)	Description	Volume (bbl)
180.00	GOCWM 5%g 7%o 36%w 52%m	0.89
135.00	GOCWM 22%g 6%o 22%w 50%m	1.89
0.00	280 ft.of GIP	0.00

Gas Rates

	Choke (inches)	Pressure (psig)	Gas Rate (Mcf/d)



**TRILOBITE
TESTING, INC**

DRILL STEM TEST REPORT

FLUID SUMMARY

Woolsey Operating Co

12-35S-13W Barber

125 N Market STE 1000
Wichita, KS 67202

MAC 1

Job Ticket: 51896

DST#: 3

ATTN: Bill Klaver

Test Start: 2014.04.07 @ 18:44:16

Mud and Cushion Information

Mud Type: Gel Chem

Cushion Type:

Oil API:

deg API

Mud Weight: 9.00 lb/gal

Cushion Length:

ft

Water Salinity:

49000 ppm

Viscosity: 50.00 sec/qt

Cushion Volume:

bbf

Water Loss: 9.17 in³

Gas Cushion Type:

Resistivity: 0.00 ohm.m

Gas Cushion Pressure:

psig

Salinity: 6000.00 ppm

Filter Cake: 0.20 inches

Recovery Information

Recovery Table

Length ft	Description	Volume bbf
180.00	GOCWM 5%g 7%o 36%w 52%m	0.885
135.00	GOCWM 22%g 6%o 22%w 50%m	1.894
0.00	280 ft.of GIP	0.000

Total Length: 315.00 ft Total Volume: 2.779 bbl

Num Fluid Samples: 0

Num Gas Bombs: 0

Serial #: none

Laboratory Name:

Laboratory Location:

Recovery Comments: Rw .23@46deg

