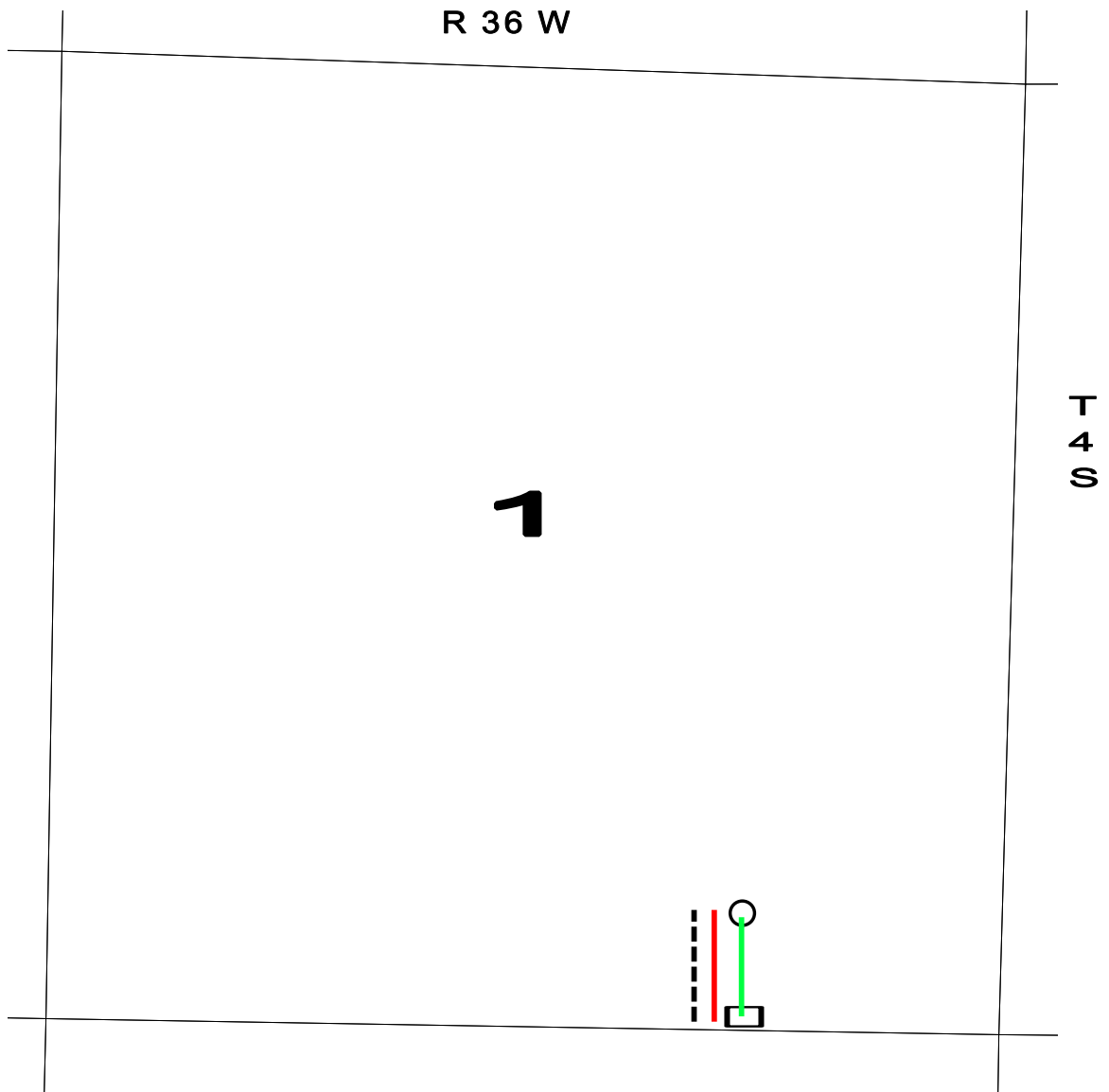


OPERATOR: Samuel Gary Jr. & Associates, Inc. 1515 Wynkoop Street, Suite 700
Denver, Colorado 80202 office: 303-831-4673 ; fax: 303-863-7285

WELL NAME: FISHER CATTLE CO 1-1

LOCATION: 650 FSL / 1460 FEL Sec. 1-4S-36W RAWLINS COUNTY

SURFACE OWNERS: A.B. Fisher, President
Fisher Cattle Company
15360 Road 3
McDonald, KS 67745



○ PROPOSED WELL LOCATION

□ ESTIMATED LOCATION OF TANK BATTERY

----- ESTIMATED LEASE ROAD
ESTIMATED LOCATION OF FLOWLINES
ESTIMATED LOCATION OF ELECTRICAL LINES