

# GEOLOGIST'S REPORT

## DRILLING TIME AND SAMPLE LOG

### BACH OIL PRODUCTION

WELL: STICE #3

LOC.: 1470' FNL & 1650' FWL  
 SPOT: N/2 NW SE NW  
 SEC. 19-7-19W  
 ROOKS COUNTY, KANSAS  
 API: 15-163-24202-00-00

### ELEVATION

KB: 1991  
 GL: 1986  
 LOG MEASURED  
 FROM: KB

### SURFACE CASING

20# 8 5/8" Casing set @ 215'  
 w/175 SX

### PRODUCTION CASING

5 1/2" casing set

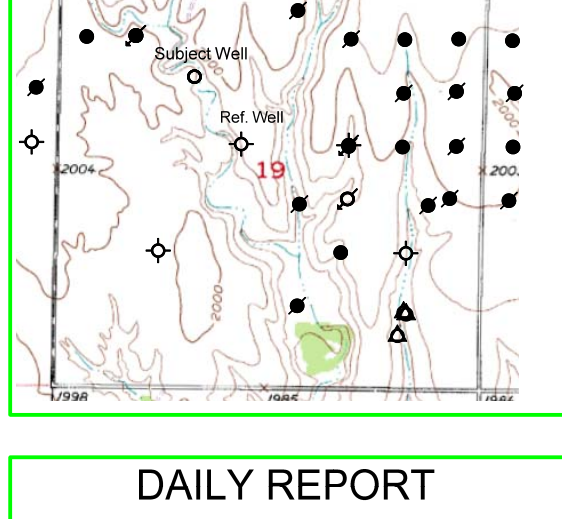
### WELL LOG SURVEYS

RAG

### ELECTRIC LOG TOPS

FORMATION	DEPTH	DATUM	POSITION
Stone Corral	1514	+477	+7
Base Stone Corral	1550	+441	-6
Topeka	2947	-956	+3
Heebner	3148	-1157	+5
Toronto	3172	-1181	+6
Lansing	3187	-1196	+7
Muncie Creek	3306	-1315	+7
Stark	3367	-1376	+9
Arbuckle	3439	-1448	+9

Arbuckle Sample Top 3442 (log top 3439 is extrapolated)



### REFERENCE WELL:

REFERENCE WELL  
 Stone Oil Co.  
 Stice #2  
 SE SE NW  
 19-7-19W

### REMARKS AND RECOMMENDATIONS

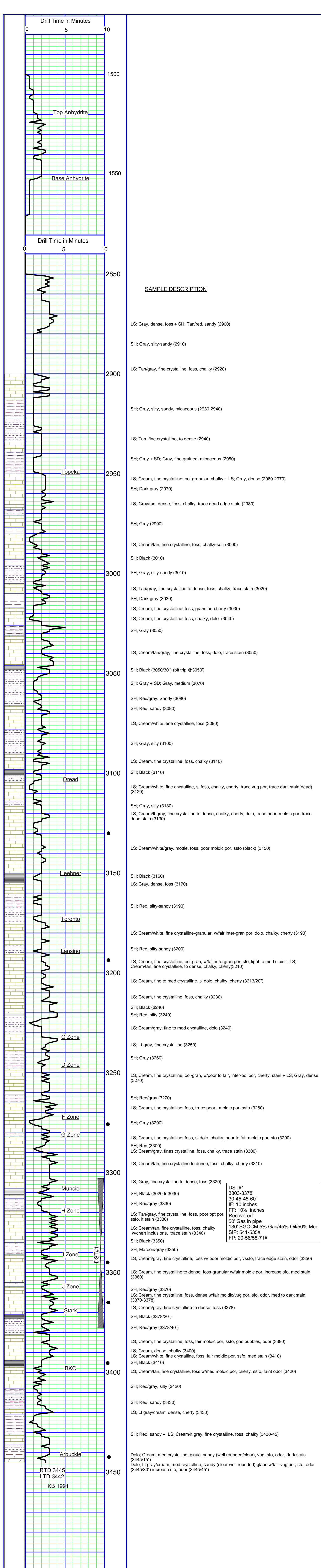
Production casing was set to further test this well.

Respectfully submitted,  
*Robert J. Petersen*  
 Robert J. Petersen

### DAILY REPORT

@7:00 A.M.

4-17-14 MIRU  
 4-18-14 SPUD  
 4-19-14 445'  
 4-20-14 2220'  
 4-21-14 3000'  
 4-22-14 3378'  
 4-23-14 3445'



DST#1  
 3303-3378'  
 30-45-45-60"  
 IF: 10 inches  
 FF: 10 1/2 inches  
 Recovered:  
 50' Gas in pipe  
 130' SGOCM 5% Gas/45% Oil/50% Mud  
 SIP: 541-535#  
 FP: 20-56/58-71#

RTD 3445  
 LTD 3442  
 KB 1991