



DRILL STEM TEST REPORT

Prepared For: **StrataKan Exploration LLC**

204 W Mill St
Plainville KS 67663

ATTN: Pat Balthazar

Kraus #1

13-8n-22w Graham,KS

Start Date: 2013.12.13 @ 06:55:16

End Date: 2013.12.13 @ 13:29:16

Job Ticket #: 55849 DST #: 1

Trilobite Testing, Inc
PO Box 362 Hays, KS 67601
ph: 785-625-4778 fax: 785-625-5620

Printed: 2013.12.18 @ 15:51:43



TRILOBITE TESTING, INC.

DRILL STEM TEST REPORT

StrataKan Exploration LLC

13-8n-22w Graham,KS

204 W Mill St
Plainville KS 67663

Kraus #1

Job Ticket: 55849

DST#: 1

ATTN: Pat Balthazar

Test Start: 2013.12.13 @ 06:55:16

GENERAL INFORMATION:

Formation: **LKC B**

Deviated: No Whipstock: ft (KB)

Time Tool Opened: 09:36:56

Time Test Ended: 13:29:16

Test Type: Conventional Bottom Hole (Initial)

Tester: Tate Lang

Unit No: 49

Interval: 3322.00 ft (KB) To 3352.00 ft (KB) (TVD)

Reference Elevations: 2068.00 ft (KB)

Total Depth: 3352.00 ft (KB) (TVD)

2063.00 ft (CF)

Hole Diameter: 7.88 inches Hole Condition: Good

KB to GR/CF: 5.00 ft

Serial #: 8898 Outside

Press@RunDepth: 15.68 psig @ 3324.00 ft (KB)

Capacity: 8000.00 psig

Start Date: 2013.12.13

End Date:

2013.12.13

Last Calib.: 2013.12.13

Start Time: 06:55:17

End Time:

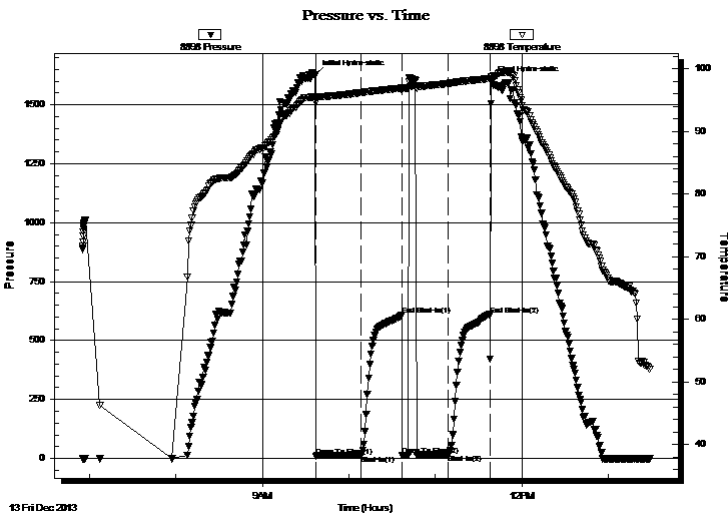
13:29:16

Time On Btm: 2013.12.13 @ 09:36:46

Time Off Btm: 2013.12.13 @ 11:38:55

TEST COMMENT: Weak surface blow built to 1/4"
Dead no blow back
Dead no blow flushed tool surged then died
Dead no blow back

PRESSURE SUMMARY



Time (Min.)	Pressure (psig)	Temp (deg F)	Annotation
0	1629.34	95.62	Initial Hydro-static
1	10.21	94.61	Open To Flow (1)
32	13.14	96.20	Shut-In(1)
60	608.35	96.95	End Shut-In(1)
61	12.17	96.56	Open To Flow (2)
92	15.68	97.67	Shut-In(2)
121	610.25	98.46	End Shut-In(2)
123	1603.31	98.71	Final Hydro-static

Recovery

Length (ft)	Description	Volume (bbl)
10.00	100%M	0.14

Gas Rates

Choke (inches)	Pressure (psig)	Gas Rate (Mcf/d)



**TRILOBITE
TESTING, INC**

DRILL STEM TEST REPORT

TOOL DIAGRAM

StrataKan Exploration LLC

13-8n-22w Graham,KS

204 W Mill St
Plainville KS 67663

Kraus #1

Job Ticket: 55849

DST#: 1

ATTN: Pat Balthazar

Test Start: 2013.12.13 @ 06:55:16

Tool Information

Drill Pipe:	Length: 3326.00 ft	Diameter: 3.80 inches	Volume: 46.66 bbl	Tool Weight:	2000.00 lb
Heavy Wt. Pipe:	Length: 0.00 ft	Diameter: 0.00 inches	Volume: 0.00 bbl	Weight set on Packer:	20000.00 lb
Drill Collar:	Length: 0.00 ft	Diameter: 2.25 inches	Volume: 0.00 bbl	Weight to Pull Loose:	44000.00 lb
			<u>Total Volume: 46.66 bbl</u>	Tool Chased	0.00 ft
Drill Pipe Above KB:	24.00 ft			String Weight: Initial	36000.00 lb
Depth to Top Packer:	3322.00 ft			Final	36000.00 lb
Depth to Bottom Packer:	ft				
Interval between Packers:	30.00 ft				
Tool Length:	50.00 ft				
Number of Packers:	2	Diameter: 6.75 inches			
Tool Comments:					

Tool Description

Tool Description	Length (ft)	Serial No.	Position	Depth (ft)	Accum. Lengths
Shut In Tool	5.00			3307.00	
Hydraulic tool	5.00			3312.00	
Packer	5.00			3317.00	20.00 Bottom Of Top Packer
Packer	5.00			3322.00	
Stubb	1.00			3323.00	
Perforations	1.00			3324.00	
Recorder	0.00	8897	Inside	3324.00	
Recorder	0.00	8898	Outside	3324.00	
Perforations	25.00			3349.00	
Bullnose	3.00			3352.00	30.00 Bottom Packers & Anchor
Total Tool Length:	50.00				



**TRILOBITE
TESTING, INC**

DRILL STEM TEST REPORT

FLUID SUMMARY

StrataKan Exploration LLC

13-8n-22w Graham,KS

204 W Mill St
Plainville KS 67663

Kraus #1

Job Ticket: 55849

DST#: 1

ATTN: Pat Balthazar

Test Start: 2013.12.13 @ 06:55:16

Mud and Cushion Information

Mud Type: Gel Chem

Cushion Type:

Oil API:

deg API

Mud Weight: 9.00 lb/gal

Cushion Length:

ft

Water Salinity:

ppm

Viscosity: 48.00 sec/qt

Cushion Volume:

bbbl

Water Loss: 8.39 in³

Gas Cushion Type:

Resistivity: ohm.m

Gas Cushion Pressure:

psig

Salinity: 2000.00 ppm

Filter Cake: 1.00 inches

Recovery Information

Recovery Table

Length ft	Description	Volume bbl
10.00	100%M	0.140

Total Length: 10.00 ft Total Volume: 0.140 bbl

Num Fluid Samples: 0

Num Gas Bombs: 0

Serial #:

Laboratory Name:

Laboratory Location:

Recovery Comments:

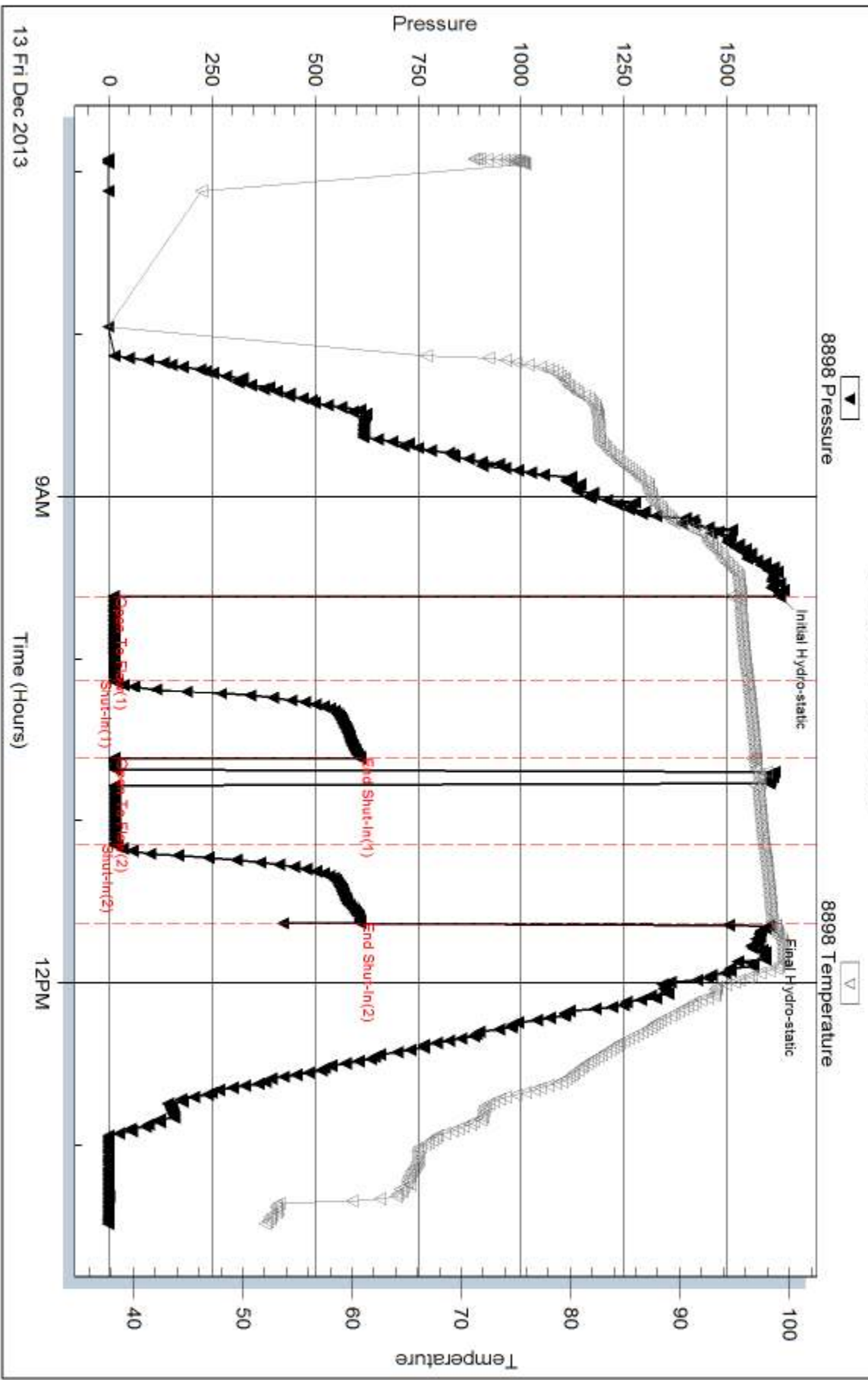
Serial #: 8898

Outside StrataKan Exploration LLC

Kraus #1

DST Test Number: 1

Pressure vs. Time



Tribble Testing, Inc

Ref. No: 55849

Printed: 2013.12.18 @ 15:51:45

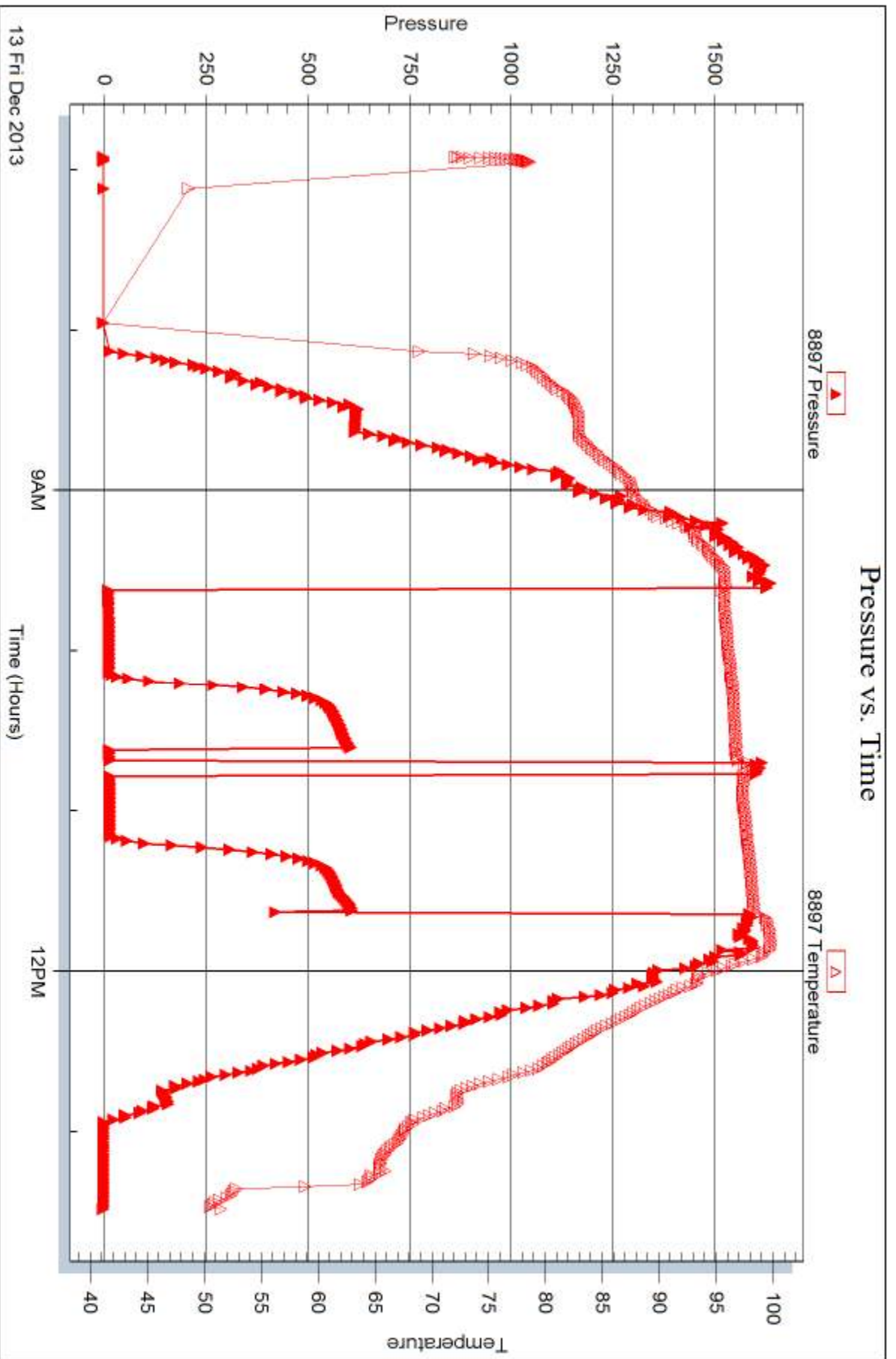
Serial #: 8897

Inside

StrataKan Exploration LLC

Kraus #1

DST Test Number: 1



Triobite Testing, Inc

Ref. No: 55849

Printed: 2013.12.18 @ 15:51:45



DRILL STEM TEST REPORT

Prepared For: **StrataKan Exploration LLC**

204 W Mill St
Plainville KS 67663

ATTN: Pat Balthazar

Kraus #1

13-8n-22w Graham,KS

Start Date: 2013.12.14 @ 12:16:52

End Date: 2013.12.14 @ 20:20:01

Job Ticket #: 55850 DST #: 2

Trilobite Testing, Inc
PO Box 362 Hays, KS 67601
ph: 785-625-4778 fax: 785-625-5620

Printed: 2013.12.18 @ 15:50:21



**TRILOBITE
TESTING, INC**

DRILL STEM TEST REPORT

StrataKan Exploration LLC

13-8n-22w Graham,KS

204 W Mill St
Plainville KS 67663

Kraus #1

Job Ticket: 55850

DST#: 2

ATTN: Pat Balthazar

Test Start: 2013.12.14 @ 12:16:52

GENERAL INFORMATION:

Formation: **LKC H-L**

Deviated: No Whipstock: ft (KB)

Time Tool Opened: 14:38:12

Time Test Ended: 20:20:01

Test Type: Conventional Bottom Hole (Reset)

Tester: Tate Lang

Unit No: 49

Interval: 3417.00 ft (KB) To 3520.00 ft (KB) (TVD)

Reference Elevations: 2068.00 ft (KB)

Total Depth: 3520.00 ft (KB) (TVD)

2063.00 ft (CF)

Hole Diameter: 7.88 inches Hole Condition: Good

KB to GR/CF: 5.00 ft

Serial #: 8898 Outside

Press@RunDepth: 51.49 psig @ 3492.00 ft (KB)

Capacity: 8000.00 psig

Start Date: 2013.12.14

End Date:

2013.12.14

Last Calib.: 2013.12.14

Start Time: 12:16:53

End Time:

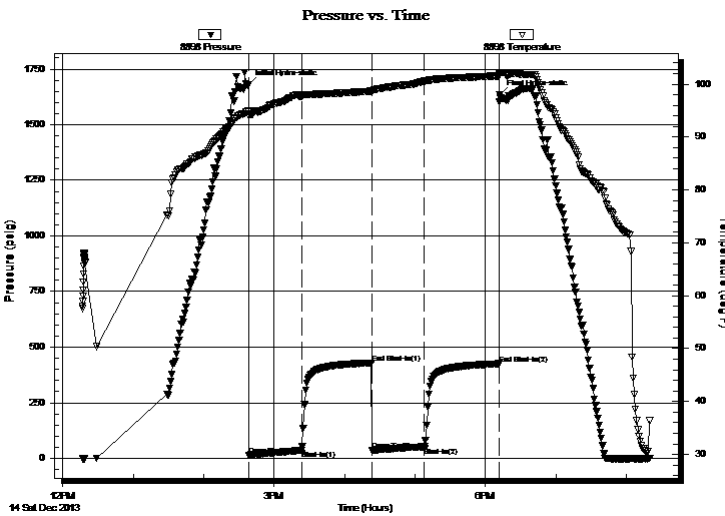
20:20:02

Time On Btm: 2013.12.14 @ 14:38:02

Time Off Btm: 2013.12.14 @ 18:12:12

TEST COMMENT: Fair surface blow built to 4"
Dead no blow back
Weak surface blow built to 2 1/2"
Dead no blow back

PRESSURE SUMMARY



Time (Min.)	Pressure (psig)	Temp (deg F)	Annotation
0	1681.54	94.93	Initial Hydro-static
1	13.82	93.99	Open To Flow (1)
46	35.39	97.71	Shut-In(1)
106	429.19	98.67	End Shut-In(1)
106	36.19	98.42	Open To Flow (2)
150	51.49	100.56	Shut-In(2)
214	425.33	101.55	End Shut-In(2)
215	1635.50	101.86	Final Hydro-static

Recovery

Length (ft)	Description	Volume (bbl)
100.00	100%M	1.40

* Recovery from multiple tests

Gas Rates

Choke (inches)	Pressure (psig)	Gas Rate (Mcf/d)



**TRILOBITE
TESTING, INC**

DRILL STEM TEST REPORT

TOOL DIAGRAM

StrataKan Exploration LLC

13-8n-22w Graham,KS

204 W Mill St
Plainville KS 67663

Kraus #1

Job Ticket: 55850

DST#: 2

ATTN: Pat Balthazar

Test Start: 2013.12.14 @ 12:16:52

Tool Information

Drill Pipe:	Length: 3419.00 ft	Diameter: 3.80 inches	Volume: 47.96 bbl	Tool Weight: 2000.00 lb
Heavy Wt. Pipe:	Length: 0.00 ft	Diameter: 0.00 inches	Volume: 0.00 bbl	Weight set on Packer: 20000.00 lb
Drill Collar:	Length: 0.00 ft	Diameter: 2.25 inches	Volume: 0.00 bbl	Weight to Pull Loose: 43000.00 lb
			<u>Total Volume: 47.96 bbl</u>	Tool Chased 0.00 ft
Drill Pipe Above KB:	22.00 ft			String Weight: Initial 38000.00 lb
Depth to Top Packer:	3417.00 ft			Final 38000.00 lb
Depth to Bottom Packer:	ft			
Interval between Packers:	103.00 ft			
Tool Length:	123.00 ft			
Number of Packers:	2	Diameter: 6.75 inches		
Tool Comments:				

Tool Description	Length (ft)	Serial No.	Position	Depth (ft)	Accum. Lengths
------------------	-------------	------------	----------	------------	----------------

Shut In Tool	5.00			3402.00	
Hydraulic tool	5.00			3407.00	
Packer	5.00			3412.00	20.00 Bottom Of Top Packer
Packer	5.00			3417.00	
Stubb	1.00			3418.00	
Change Over Sub	1.00			3419.00	
Drill Pipe	31.50			3450.50	
Change Over Sub	1.00			3451.50	
Perforations	7.00			3458.50	
Change Over Sub	1.00			3459.50	
Drill Pipe	31.50			3491.00	
Change Over Sub	1.00			3492.00	
Recorder	0.00	8897	Inside	3492.00	
Recorder	0.00	8898	Outside	3492.00	
Perforations	25.00			3517.00	
Bullnose	3.00			3520.00	103.00 Bottom Packers & Anchor
Total Tool Length:	123.00				



**TRILOBITE
TESTING, INC**

DRILL STEM TEST REPORT

FLUID SUMMARY

StrataKan Exploration LLC

13-8n-22w Graham,KS

204 W Mill St
Plainville KS 67663

Kraus #1

Job Ticket: 55850

DST#: 2

ATTN: Pat Balthazar

Test Start: 2013.12.14 @ 12:16:52

Mud and Cushion Information

Mud Type: Gel Chem

Cushion Type:

Oil API:

deg API

Mud Weight: 9.00 lb/gal

Cushion Length:

ft

Water Salinity:

ppm

Viscosity: 49.00 sec/qt

Cushion Volume:

bbbl

Water Loss: 8.79 in³

Gas Cushion Type:

Resistivity: ohm.m

Gas Cushion Pressure:

psig

Salinity: 3000.00 ppm

Filter Cake: 1.00 inches

Recovery Information

Recovery Table

Length ft	Description	Volume bbl
100.00	100%M	1.403

Total Length: 100.00 ft Total Volume: 1.403 bbl

Num Fluid Samples: 0

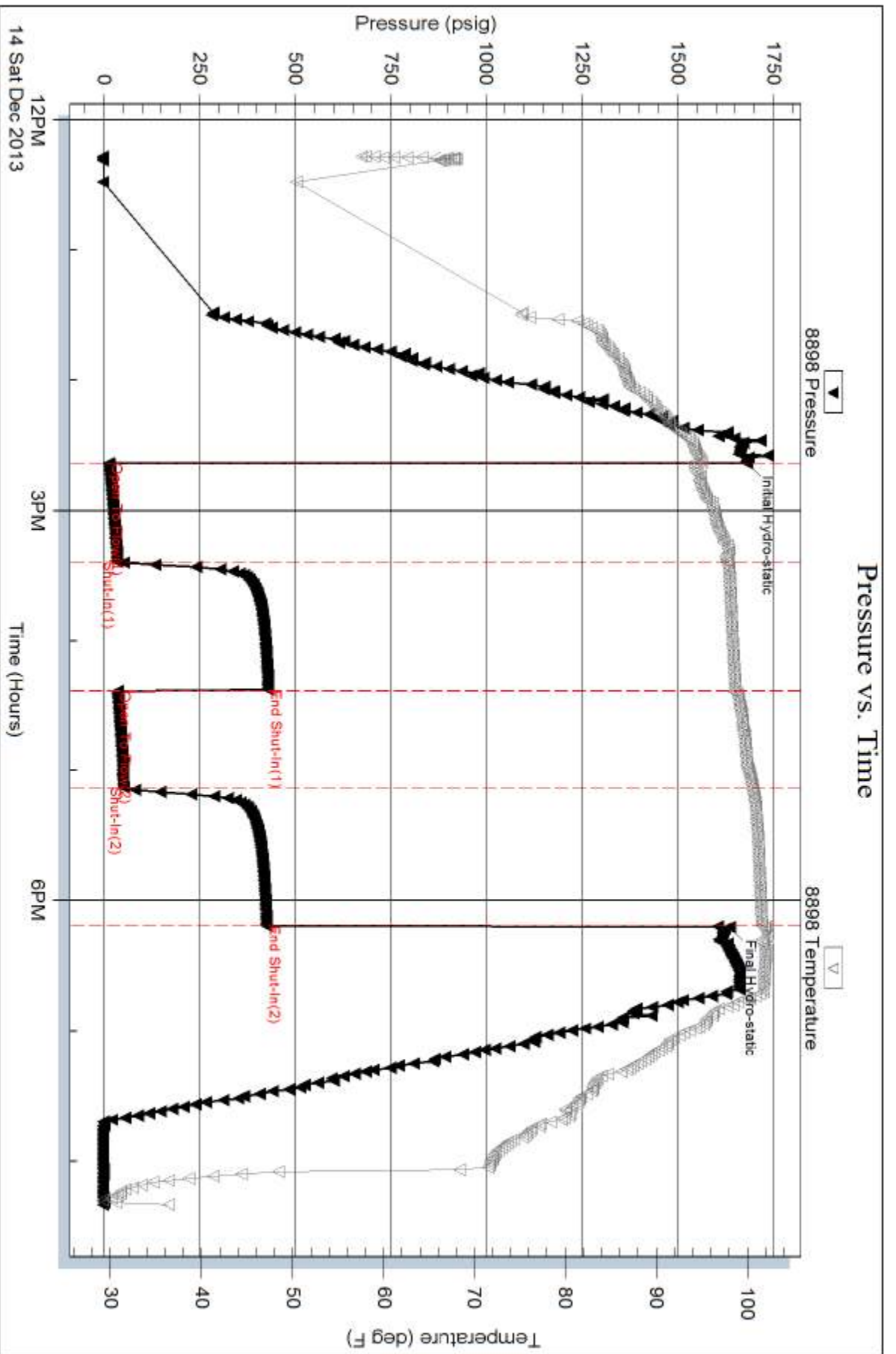
Num Gas Bombs: 0

Serial #:

Laboratory Name:

Laboratory Location:

Recovery Comments:



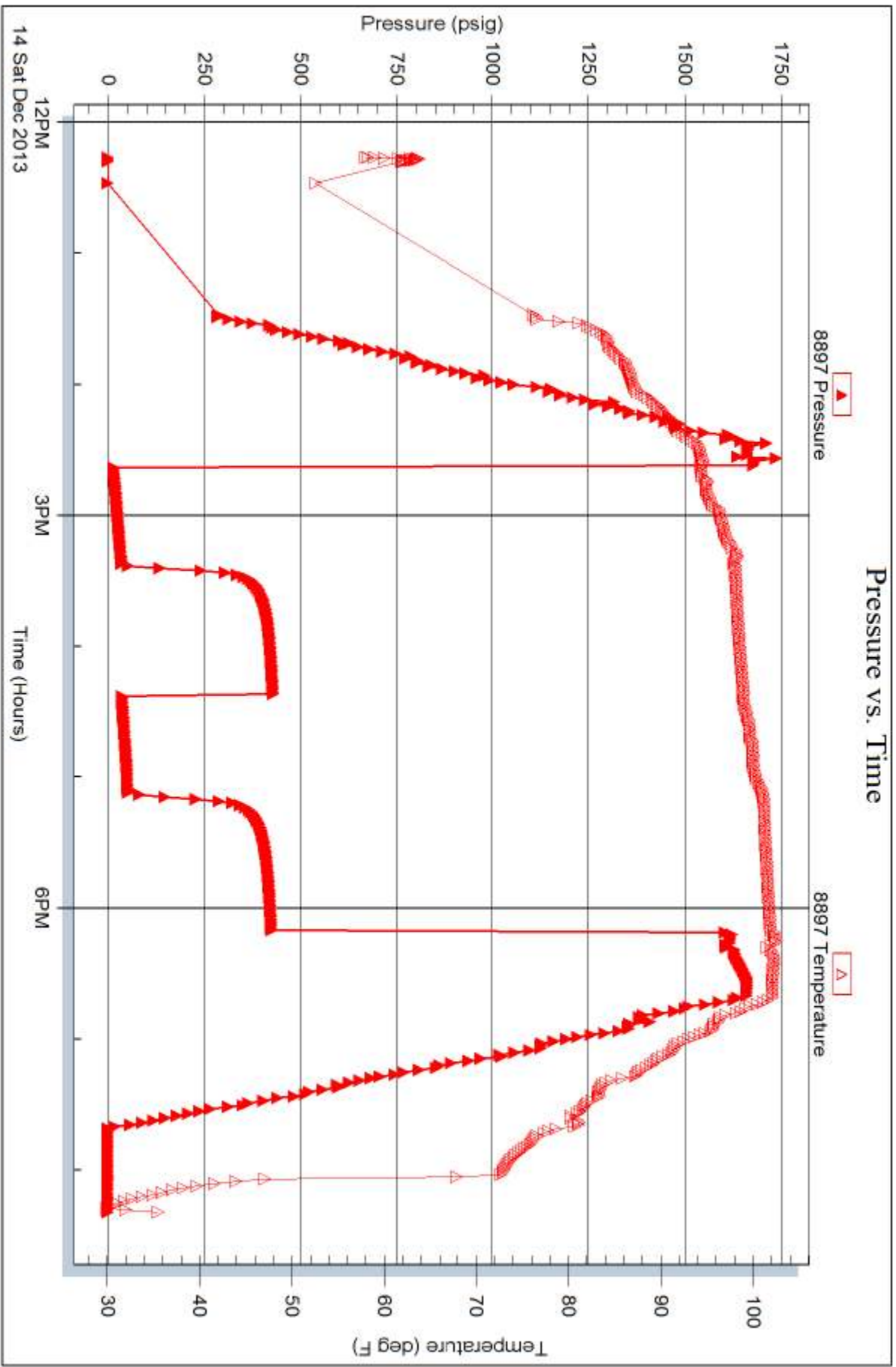
Serial #: 8897

Inside

StrataKan Exploration LLC

Kraus #1

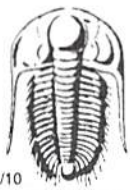
DST Test Number: 2



Tribble Testing, Inc

Ref. No: 55850

Printed: 2013.12.18 @ 15:50:23



TRILOBITE TESTING INC.

1515 Commerce Parkway • Hays, Kansas 67601

Test Ticket

NO. 55849

Well Name & No. Kraus #1 Test No. 1 Date 12-13-13
 Company Strata Kon Explorations LLC Elevation 2068 KB 2063 GL
 Address 204 W Mill St, Plainville KS 67663
 Co. Rep / Geo. Pat Rig White Knight #1
 Location: Sec. B Twp. 8N Rge. 22W Co. Graham State KS

Interval Tested 3322 3352 Zone Tested LKC B
 Anchor Length 30 Drill Pipe Run 3326 Mud Wt. 8.6
 Top Packer Depth 3318 Drill Collars Run 0 Vis 48
 Bottom Packer Depth 3322 Wt. Pipe Run 0 WL 8.4
 Total Depth 3352 Chlorides 2000 ppm System LCM 1#

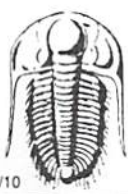
Blow Description Weak surface blow built to 1/4 in
Dead no blow back
Dead no blow Flushed tool surged then died
Dead no blow

Rec	Feet of	%gas	%oil	%water	%mud
Rec	Feet of	%gas	%oil	%water	%mud
Rec <u>10</u>	Feet of <u>Mud</u>	%gas	%oil	%water <u>100</u>	%mud
Rec	Feet of	%gas	%oil	%water	%mud
Rec	Feet of	%gas	%oil	%water	%mud

Rec Total 10 BHT 99 Gravity _____ API RW _____ @ _____ °F Chlorides _____ ppm

(A) Initial Hydrostatic 1629 Test 1150 T-On Location 04:30
 (B) First Initial Flow 10 Jars _____ T-Started 06:50
 (C) First Final Flow 13 Safety Joint _____ T-Open 09:37
 (D) Initial Shut-In 608 Circ Sub _____ T-Pulled 11:37
 (E) Second Initial Flow 12 Hourly Standby _____ T-Out 13:30
 (F) Second Final Flow 16 Mileage 110 R/T 170.50 Comments _____
 (G) Final Shut-In 610 Sampler _____
 (H) Final Hydrostatic 1603 Straddle _____ Ruined Shale Packer _____
 Shale Packer _____ Ruined Packer _____
 Extra Packer _____ Extra Copies _____
 Initial Open 30 Extra Recorder _____ Sub Total 0
 Initial Shut-In 30 Day Standby _____ Total 1320.50
 Final Flow 30 Accessibility _____ MP/DST Disc't _____
 Final Shut-In 30 Sub Total 1320.50

Approved By [Signature] Our Representative [Signature]
 Trilobite Testing Inc. shall not be liable for damaged of any kind of the property or personnel of the one for whom a test is made, or for any loss suffered or sustained, directly or indirectly, through the use of its equipment, or its statements or opinion concerning the results of any test, tools lost or damaged in the hole shall be paid for at cost by the party for whom the test is made.



TRILOBITE TESTING INC.

1515 Commerce Parkway • Hays, Kansas 67601

Test Ticket

NO. 55850

4/10

Well Name & No. Kraus #1 Test No. 2 Date 12-14-13
 Company Strataken Exploration LLC Elevation 2068 KB 2063 GL
 Address 204 W Mill St. Plainville KS 67663
 Co. Rep / Geo. Pat Rig White Knight #1
 Location: Sec. 13 Twp. 8N Rge. 22W Co. Graham State KS

Interval Tested 33 3417 3520 Zone Tested LKC H-L
 Anchor Length 163 Drill Pipe Run 3419 Mud Wt. 9.2
 Top Packer Depth 3413 Drill Collars Run 0 Vis 4.9
 Bottom Packer Depth 3417 Wt. Pipe Run 0 WL 8.8
 Total Depth 3520 Chlorides 3000 ppm System LCM 1#
 Blow Description Fair surface blow built to 4 in
Dead no blow back
Weak surface blow built to 2 1/2 in
Dead no blow back

Rec	Feet of	%gas	%oil	%water	%mud
Rec	Feet of	%gas	%oil	%water	%mud
Rec <u>100</u>	Feet of <u>mud</u>	%gas	%oil	%water <u>100</u>	%mud
Rec	Feet of	%gas	%oil	%water	%mud
Rec	Feet of	%gas	%oil	%water	%mud

Rec Total 100 BHT 102 Gravity _____ API RW _____ @ _____ °F Chlorides _____ ppm

(A) Initial Hydrostatic 1682 Test 1150 T-On Location 11:05
 (B) First Initial Flow 14 Jars _____ T-Started 12:16
 (C) First Final Flow 35 Safety Joint _____ T-Open 14:32
 (D) Initial Shut-In 229 Circ Sub _____ T-Pulled 18:08
 (E) Second Initial Flow 36 Hourly Standby _____ T-Out 20:20
 (F) Second Final Flow 51 Mileage 10RH From Hill City Comments Loaded
 (G) Final Shut-In 405 Sampler _____ @ 15:30 12-15-13
 (H) Final Hydrostatic 1635 Straddle _____ 110RH
 Ruined Shale Packer _____
 Shale Packer _____ Ruined Packer _____
 Extra Packer _____ Extra Copies _____
 Extra Recorder _____ Sub Total 0
 Day Standby _____ Total 1491
 Accessibility _____ MP/DST Disc't _____
 Sub Total 1491

Approved By _____

Our Representative [Signature]

Trilobite Testing Inc. shall not be liable for damaged or any kind of the property or personnel of the one for whom a test is made, or for any loss suffered or sustained, directly or indirectly, through the use of its equipment, or its statements or opinion concerning the results of any test, tools lost or damaged in the hole shall be paid for at cost by the party for whom the test is made.