



## Geologist's Report

**Company:** Blueridge Petroleum Corporation  
**Lease:** Thompson-Smith #4-11  
**Field:** Pollnow Southeast  
**Location:** NW-SW-NE-NE (782 FNL & 1233 FEL)  
**Sec:** 11 **Twsp:** 3S **Rge:** 29W  
**County:** Decatur **State:** Kansas  
**GL:** 2563' **KB:** 2572'

**Contractor:** Southwind Drilling Rig #8  
**Spud:** 6/12/14 **Comp:** 6/19/14  
**RTD:** 3850' **LTD:** 3850'  
**Mud Up:** 3200' **Type Mud:** Chemical/Displaced

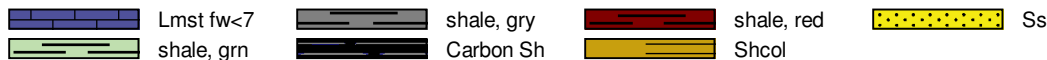
**Samples Saved From:** 3400' to RTD  
**Drilling Time Kept From:** 3400' to RTD  
**Samples Examined From:** 3400' to RTD  
**Geological Supervision From:** 3400' to RTD  
**Geologist on Well:** Clint Musgrove

**Surface Casing:** 8 5/8" @ 221'  
**Production:** 5 1/2" @ 3849

**Logs: By Nabors:** CNL/CDL, DIL, MEL, SONIC

## Well Comparison 25

## ROCK TYPES

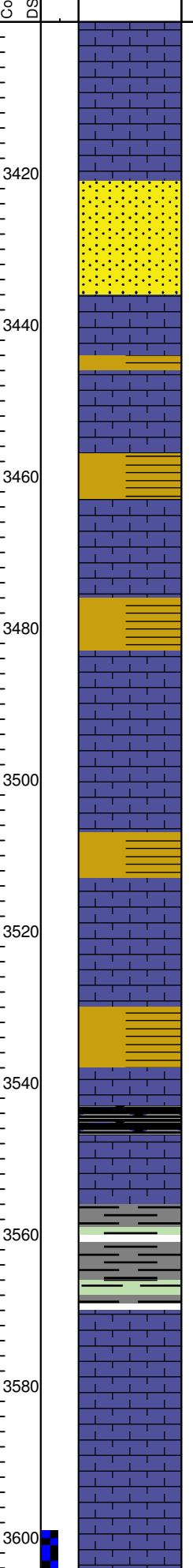
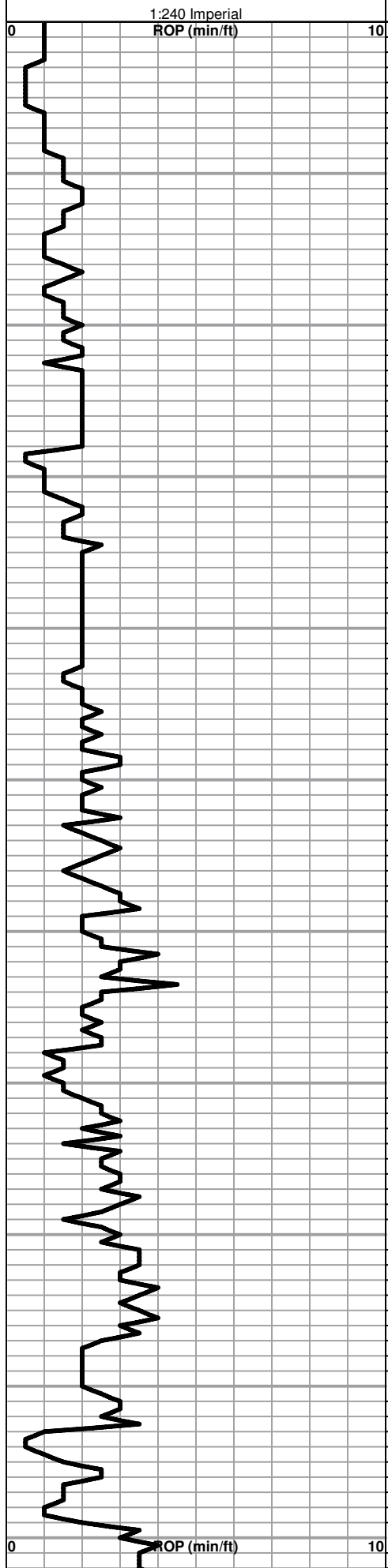


## OTHER SYMBOLS

**DST**  
 DST Int  
 DST alt

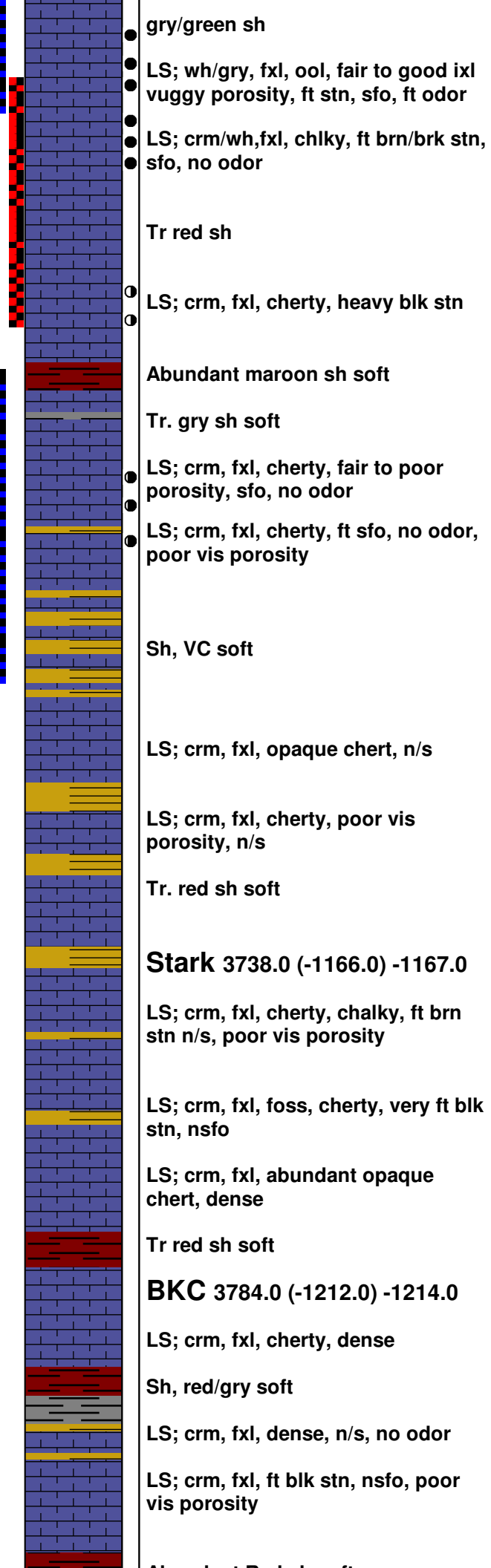
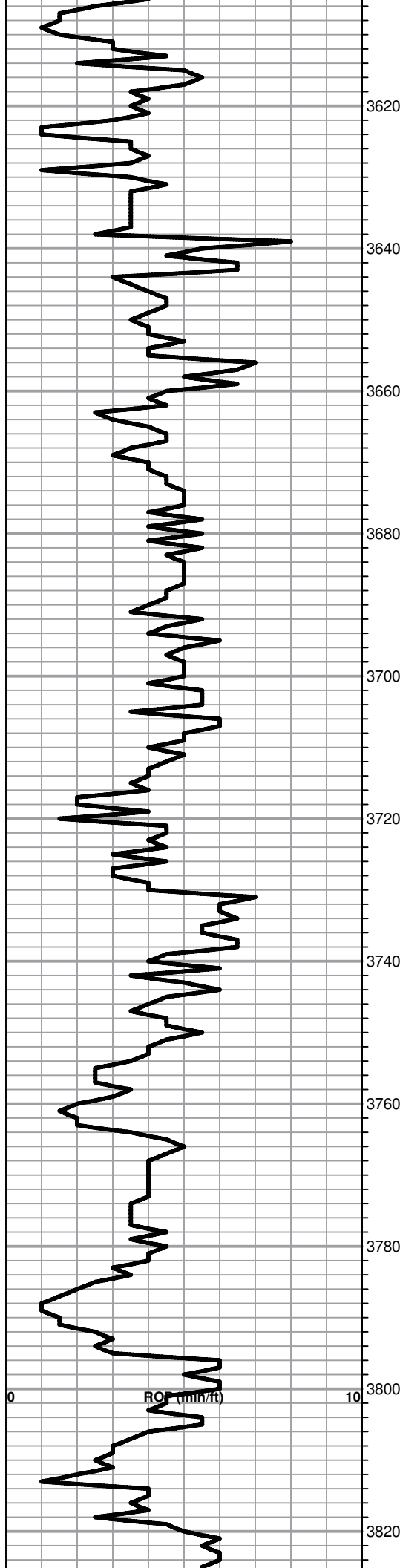
Printed by GEOstrip VC Striplog version 4.0.8.7 (www.grsi.ca)

ROP (min/ft)	Drill Time	Depth	DST	Lithology	Dil Show	Geological Descriptions	DST Description
	—						



**LS; wh, crm, ool in part, n/s no odor**  
  
**LS; wh/crm, fxl, dense n/s**  
  
**Sand, wh, f grain, well sorted poor porosity, n/s**  
  
**Red sh**  
  
**LS; wh, fxl, foss in part, poor vis porosity**  
  
**AA**  
  
**LS; wh/gry, fxl, foss, cherty, n/s**  
  
  
**LS; crm/tan, f-med xln, dense, sucrosic, cherty, n/s**  
  
  
**LS; wh/crm, fxl, ool, foss, chlky in part, scatt ixl porosity, blk/gry stn, sfo (dead) no odor**  
  
**LS; wh/crm, fxl, chlky, poor vis porosity, tr bk stn ns**  
  
**Heebner 3545.0 (-973.0) -972.0**  
**Blk carb sh**  
  
**Shale- gry soft**  
  
**aa**  
  
**Toronto 3580.0 (-1008.0) - 1014.0**  
**LS; crm/wh, finely oom, fair porosity, chlky, n/s**  
  
**Lansing 3590.0 (-1018.0) - 1014.0**  
**LS; wh, ook, fxl, scatt vuggy oom porosity, n/s**

**DST #1 3600-3620**  
**30-30-45-60**  
**Blow: BOB 15 mins**  
**min**  
**2nd Opening: BOB 17 mins**  
  
**Recovery:**  
**346' GIP**  
**94' clean oil**  
**63' OCMW (30%O, 35%M, 35%W)**  
**63' OCMW (5%O, 10% M, 85%W)**  
  
**Pressures:**  
**ISIP: 741 psi**  
**FSIP: 740 psi**  
**IFP: 16-52 psi**  
**FFP: 57-104 psi**



HSH: 1710-1712 psi

**DST #2 3620-3650**  
**Packer Fail**

**DST #3 3617-3750**  
**30-30-30-45**  
 Blow: little to no blow  
 2nd Opening: weak surface

Recovery:  
 68' MW (90%W, 10% M)

Pressures:  
 ISIP: 772 psi  
 FSIP: 773 psi  
 IFP: 16-34 psi  
 FFP: 42-47 psi  
 HSH: 1705-1707 psi

**DST #4 3658-3700**  
**30-30-30-45**

Blow: weak surface  
 2nd open: no blow

Recovery:  
 3' Mud

Pressures:  
 ISIP: 956 psi  
 FSIP: 1135 psi  
 IFP: 12-14 psi  
 FFP: 13-15 psi  
 HSH: 1769-1712 psi

● gry/green sh

● LS; wh/gry, fxl, ool, fair to good ixl  
 vuggy porosity, ft stn, sfo, ft odor

● LS; crm/wh,fxl, chlky, ft brn/brk stn,  
 sfo, no odor

Tr red sh

○ LS; crm, fxl, cherty, heavy blk stn

Abundant maroon sh soft

Tr. gry sh soft

● LS; crm, fxl, cherty, fair to poor  
 porosity, sfo, no odor

● LS; crm, fxl, cherty, ft sfo, no odor,  
 poor vis porosity

Sh, VC soft

LS; crm, fxl, opaque chert, n/s

LS; crm, fxl, cherty, poor vis  
 porosity, n/s

Tr. red sh soft

**Stark 3738.0 (-1166.0) -1167.0**

LS; crm, fxl, cherty, chalky, ft brn  
 stn n/s, poor vis porosity

LS; crm, fxl, foss, cherty, very ft blk  
 stn, nsfo

LS; crm, fxl, abundant opaque  
 chert, dense

Tr red sh soft

**BKC 3784.0 (-1212.0) -1214.0**

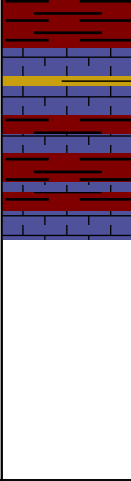
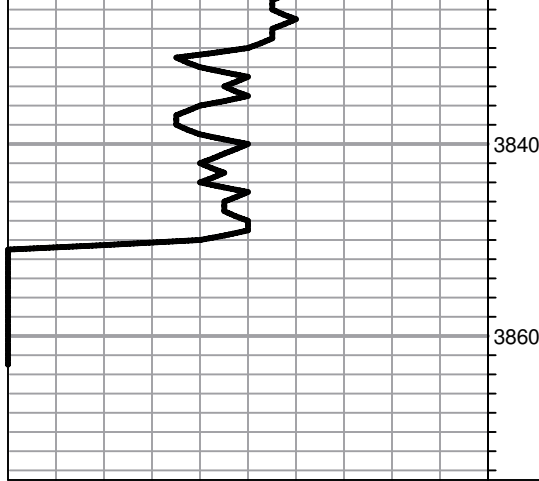
LS; crm, fxl, cherty, dense

Sh, red/gry soft

LS; crm, fxl, dense, n/s, no odor

LS; crm, fxl, ft blk stn, nsfo, poor  
 vis porosity

Abundant red sh soft



**Abundant Red sh soft**

**LS; crm/tan, fxl, poor vis porosity,  
n/s**

**RTD 3850.0 (-1278.0) -1278.0**