



**TRILOBITE  
TESTING, INC.**

# DRILL STEM TEST REPORT

Shakespeare Oil Co. Inc

**17-13-32 Logan Co KS**

202 W. Main St.  
Salem Il  
62881  
ATTN: Tim Priest

**Campbell 4 17**

Job Ticket: 57661

**DST#: 1**

Test Start: 2014.06.04 @ 04:13:15

## GENERAL INFORMATION:

Formation: **Toronto Lansing A**

Deviated: No Whipstock: ft (KB)

Time Tool Opened: 07:26:00

Time Test Ended: 15:33:30

Test Type: Conventional Bottom Hole (Initial)

Tester: Mike Roberts

Unit No: 65

**Interval: 3995.00 ft (KB) To 4035.00 ft (KB) (TVD)**

Reference Elevations: 3043.00 ft (KB)

Total Depth: 4035.00 ft (KB) (TVD)

3033.00 ft (CF)

Hole Diameter: 7.88 inches Hole Condition: Fair

KB to GR/CF: 10.00 ft

**Serial #: 8737 Outside**

Press@RunDepth: 260.86 psig @ 3997.00 ft (KB)

Capacity: 8000.00 psig

Start Date: 2014.06.04

End Date:

2014.06.04

Last Calib.:

2014.06.04

Start Time:

04:13:15

End Time:

15:33:30

Time On Btm:

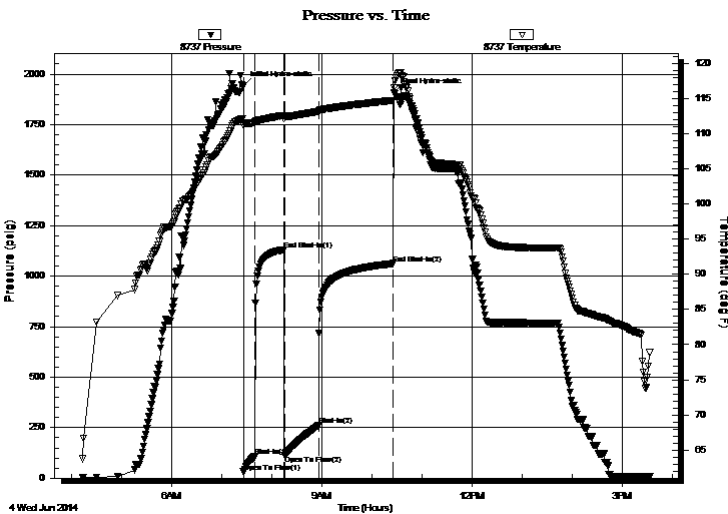
2014.06.04 @ 07:25:45

Time Off Btm:

2014.06.04 @ 10:26:45

**TEST COMMENT:** IF:BOB in 11 min.  
IS:Weak Surface blow died in 15 min.  
FF:BOB in 14 min.  
FS:No retrurn blow

## PRESSURE SUMMARY



Time (Min.)	Pressure (psig)	Temp (deg F)	Annotation
0	1944.04	112.15	Initial Hydro-static
1	30.37	111.18	Open To Flow (1)
14	107.49	111.54	Shut-In(1)
49	1130.95	112.58	End Shut-In(1)
50	114.50	112.06	Open To Flow (2)
91	260.86	113.13	Shut-In(2)
180	1062.43	114.70	End Shut-In(2)
181	1908.51	116.49	Final Hydro-static

## Recovery

Length (ft)	Description	Volume (bbl)
118.00	sw 100% sw	0.58
248.00	mcw 10%m 90% sw	3.48
62.00	ocmw 5% o 20% M 75%W	0.87
124.00	gco 10%g 90%o	1.74
124.00	gco 20%g 80%o	1.74

## Gas Rates

	Choke (inches)	Pressure (psig)	Gas Rate (MMcf/d)



**TRILOBITE  
TESTING, INC**

# DRILL STEM TEST REPORT

**FLUID SUMMARY**

Shakespeare Oil Co. Inc

**17-13-32 Logan Co KS**

202 W. Main St.  
Salem II  
62881

**Campbell 4 17**

Job Ticket: 57661

**DST#: 1**

ATTN: Tim Priest

Test Start: 2014.06.04 @ 04:13:15

## Mud and Cushion Information

Mud Type: Gel Chem

Cushion Type:

Oil API:

25 deg API

Mud Weight: 9.00 lb/gal

Cushion Length:

ft

Water Salinity:

17000 ppm

Viscosity: 50.00 sec/qt

Cushion Volume:

bbf

Water Loss: 7.19 in<sup>3</sup>

Gas Cushion Type:

Resistivity: 0.00 ohm.m

Gas Cushion Pressure:

psig

Salinity: 4000.00 ppm

Filter Cake: 1.00 inches

## Recovery Information

Recovery Table

Length ft	Description	Volume bbf
118.00	sw 100% sw	0.580
248.00	mcw 10%m 90% sw	3.479
62.00	ocmw 5% o 20% M 75%W	0.870
124.00	gco 10%g 90%o	1.739
124.00	gco 20%g 80%o	1.739

Total Length: 676.00 ft      Total Volume: 8.407 bbf

Num Fluid Samples: 0

Num Gas Bombs: 0

Serial #:

Laboratory Name:

Laboratory Location:

Recovery Comments: API 22 @ 90 corrected to 25

RW = .361 @ 81\* = 17,000 ppm

### Pressure vs. Time

