

Geologic Report
Aaron L. Young

Drilling Time and Sample Log

Scale 1:240 (5"=100') Imperial
 Measured Depth Log

Well Name: Vehige #3-36
 Well Id:
 Location: Section 36 - T6S - R20W
 License Number: API: 15-163-24236
 Spud Date: 7 / 16 / 2014
 Surface Coordinates: 1320' FSL and 2310' FEL
 Approx. W2 - W2 - SE

Region: Rooks Co., KS
 Drilling Completed: 7 / 22 / 2014

Bottom Hole Coordinates:
 Ground Elevation (ft): 2102' K.B. Elevation (ft): 2107'
 Logged Interval (ft): 3100' To: 3660' Total Depth (ft): 3660'
 Formation: Arbuckle
 Type of Drilling Fluid: Chemical - Mud-Co

Printed by WellSight Log Viewer from WellSight Systems 1-800-447-1534 www.WellSight.com

OPERATOR

Company: Trek AEC, LLC
 Address: 155 N Market, Suite 710
 Wichita, KS 67202

GEOLOGIST

Name: Aaron L. Young
 Company: Young Consulting LLC
 Address: 155 N. Market, Suite 710
 Wichita, Kansas 67202

General Info

CONTRACTOR: WW Drilling, Rig #6

BIT RECORD:

No.	Size	Make	Jets	Out	Feet	Hours
1	12-1/4	Smith	14-14-15	259	254	3.75
2	7-7/8	Smith F27	14-14-15	4660	4406	62.5

SURVEYS: 259' - 3/4 3396' - 3/4 3660' - 3/4

GENERAL DRILLING AND PUMP INFORMATION:

Drilling with 35,000 lbs. on bit and approx 85 RPM.
 Running 7 stands of collars; 422.60'
 Pumping approx 800-900 psi at standpipe.

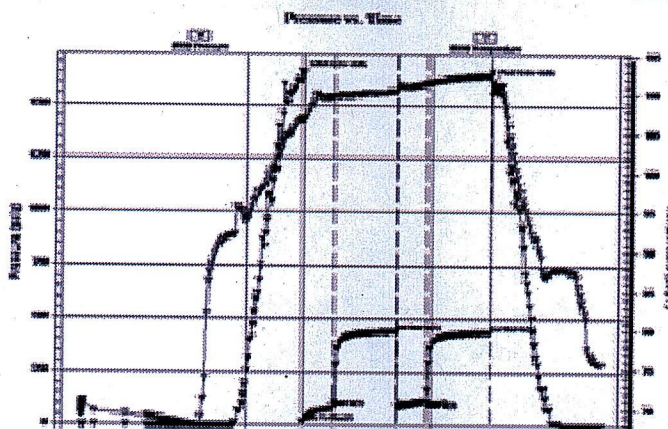
Daily Status

7/16/14 - Spud
 7/17/14 - Drilling @ 312"
 7/18/14 - Drilling @ 2224', Bit trip at 2506'
 7/19/14 - Drilling @ 3120'
 7/20/14 - DST #1 3354'-3396', DST #2 3462'-3503'
 7/21/14 - DST #3 3569'-3591'
 7/22/14 - TD 3660', Logged, Plugged

DST #1 LKC 'C' & 'D' 3,354'-3,396'
 30"-60"-30"-60"

IF: Built to 7 1/2"
 ISI: Weak surface blow, died in 19 min
 FF: Built to 6 1/2"
 FSI: Weak surface blow, died in 22 min

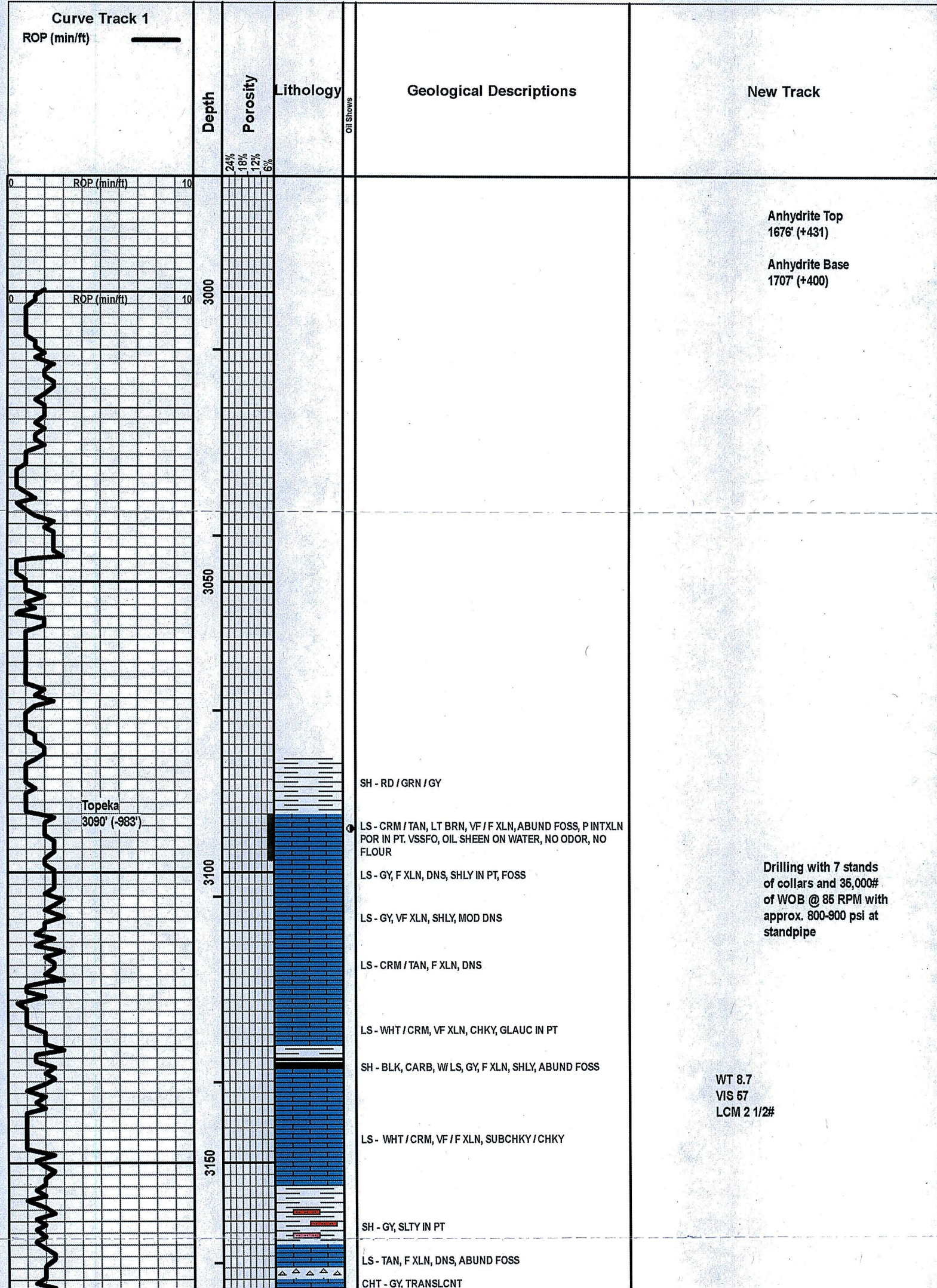
Rec': 120' w/ oil spots VSGMCW (5% G, 75% W, 70% M),
 63' VSGOWCM (5% G, 5% O, 30% W, 60% M), 20'
 VSGOWCM (5% G, 5% O, 5% W, 85% W), 20' O, 63' GIP

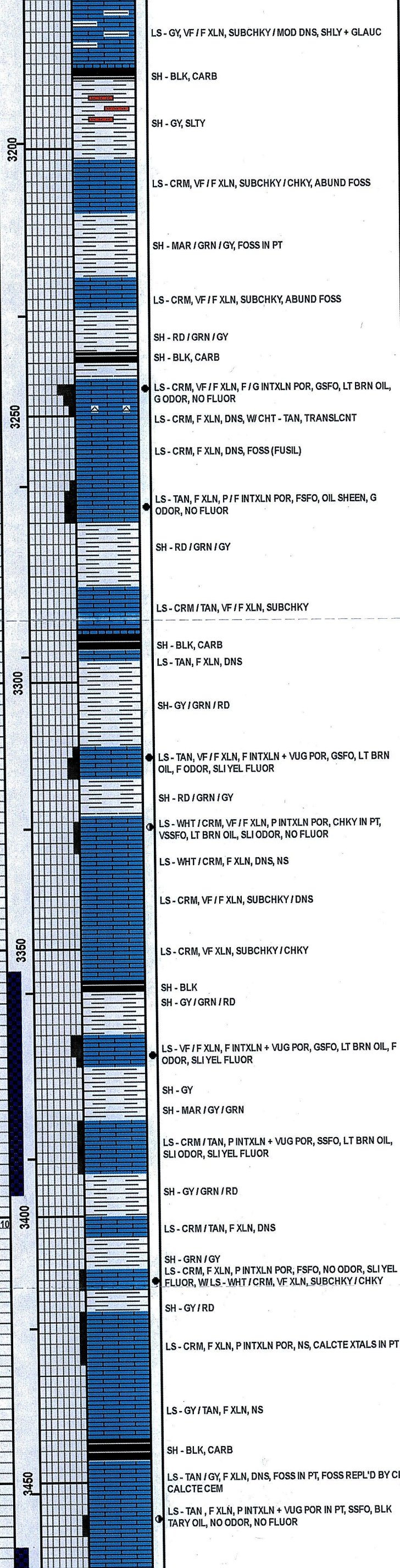
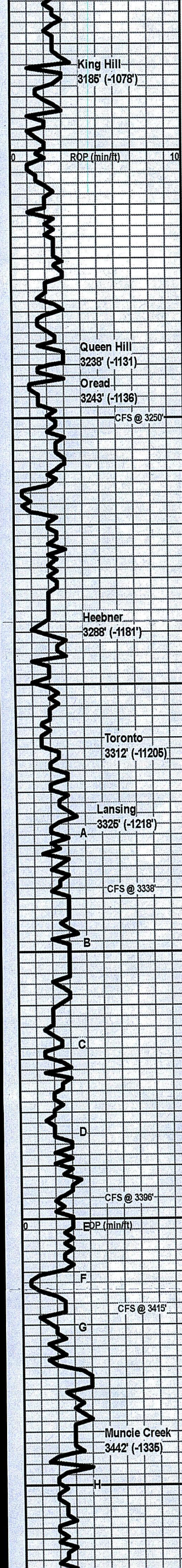


	Nodule		Echin		Sltstrg
	Phos		Fish		Ssstrg
	Pyr		Foram		Carbsh

OTHER SYMBOLS

POROSITY TYPE	SORTING	OIL SHOWS	Dst	
Earthy	Well	Even	EVENTS	
Fenest	Moderate	Spotted		Rft
Fracture	Poor	Ques		Sidewall
Inter	ROUNDING	Dead	Conn	
Moldic		Rounded		
Organic		Subrnd		
Pinpoint	Subang	Gas show		
Vuggy	Angular	INTERVALS		
		Core		
		Dst		





LS - GY, VF / F XLN, SUBCHKY / MOD DNS, SHLY + GLAUC

SH - BLK, CARB

SH - GY, SLTY

LS - CRM, VF / F XLN, SUBCHKY / CHKY, ABUND FOSS

SH - MAR / GRN / GY, FOSS IN PT

LS - CRM, VF / F XLN, SUBCHKY, ABUND FOSS

SH - RD / GRN / GY

SH - BLK, CARB

LS - CRM, VF / F XLN, F / G INTXLN POR, GSFO, LT BRN OIL, G ODOR, NO FLUOR

LS - CRM, F XLN, DNS, W/CHT - TAN, TRANSLCNT

LS - CRM, F XLN, DNS, FOSS (FUSIL)

LS - TAN, F XLN, P / F INTXLN POR, FSFO, OIL SHEEN, G ODOR, NO FLUOR

SH - RD / GRN / GY

LS - CRM / TAN, VF / F XLN, SUBCHKY

SH - BLK, CARB

LS - TAN, F XLN, DNS

SH - GY / GRN / RD

LS - TAN, VF / F XLN, F INTXLN + VUG POR, GSFO, LT BRN OIL, F ODOR, SLI YEL FLUOR

SH - RD / GRN / GY

LS - WHT / CRM, VF / F XLN, P INTXLN POR, CHKY IN PT, VSSFO, LT BRN OIL, SLI ODOR, NO FLUOR

LS - WHT / CRM, F XLN, DNS, NS

LS - CRM, VF / F XLN, SUBCHKY / DNS

LS - CRM, VF XLN, SUBCHKY / CHKY

SH - BLK

SH - GY / GRN / RD

LS - VF / F XLN, F INTXLN + VUG POR, GSFO, LT BRN OIL, F ODOR, SLI YEL FLUOR

SH - GY

SH - MAR / GY / GRN

LS - CRM / TAN, P INTXLN + VUG POR, SSFO, LT BRN OIL, SLI ODOR, SLI YEL FLUOR

SH - GY / GRN / RD

LS - CRM / TAN, F XLN, DNS

SH - GRN / GY

LS - CRM, F XLN, P INTXLN POR, FSFO, NO ODOR, SLI YEL FLUOR, W/LS - WHT / CRM, VF XLN, SUBCHKY / CHKY

SH - GY / RD

LS - CRM, F XLN, P INTXLN POR, NS, CALCTE XTALS IN PT

LS - GY / TAN, F XLN, NS

SH - BLK, CARB

LS - TAN / GY, F XLN, DNS, FOSS IN PT, FOSS REPL'D BY CLR CALCTE CEM

LS - TAN, F XLN, P INTXLN + VUG POR IN PT, SSFO, BLK TARY OIL, NO ODOR, NO FLUOR

WT 8.7
VIS 55
LCM 2#

WT 8.8
VIS 52
LCM 2#

WT 8.9
VIS 50
LCM 2#

WT 9.0
VIS 50
LCM 2 1/2#

DST #1
LKC 'C' & 'D'
3354'-3396'
30"-60"-30"-60"

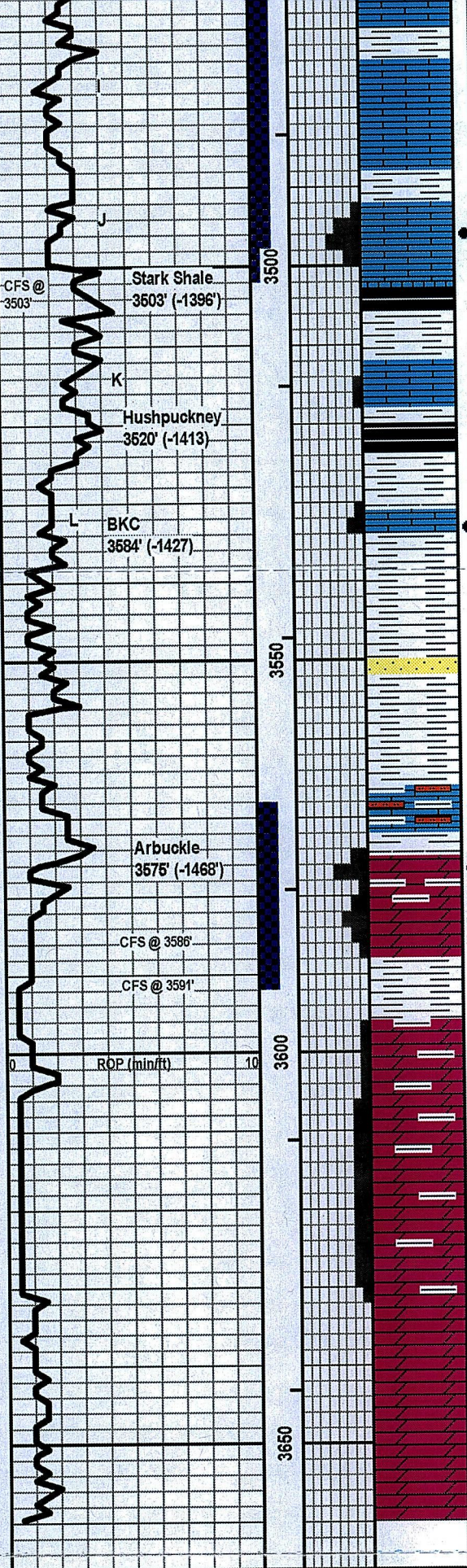
IF: Built to 7 1/2"
ISI: W surface blow, died in 19 min
FF: Built to 6 1/2"
FSI: W surface blow, died in 22 min

Rec': 120' w/ oil spots (5% G, 75% W, 70% M), 63' (5% G, 5% O, 30% W, 60% M), 20' (5% G, 5% O, 5% W, 85% W), 20' O, 63' GIP

IH: 1646#
IF: 18#-86#
ISI: 445#
FF: 90#-117#
FSI: 440#
FH: 1610#

WT 9.1
VIS 48
LCM 2 1/2#

WT 9.1
VIS 61
LCM 2#



LS - CRM / GY, VF / F XLN, CHKY IN PT, SHLY IN PT
SH - GRN

LS - CRM / TAN, VF / F XLN, SUBCHKY, NS

SH - RD

LS - CRM / TAN, F XLN, F / G / XLCNT INTXLN + VUG POR, GSFO, LT BRN OIL, V G ODOR, SLI YEL FLUOR, FOSS

LS - WHT / CRM, F XLN, DNS, FOSS

SH - BLK, CARB

SH - GY

LS - CRM / TAN, F XLN, P INT XLN POR IN PT, SSFO, NO ODOR, SLI YEL FLUOR

SH - RD / GRN / GY

SH - BLK, CARB, W SH - RD / GRN / GY

LS - CRM, F XLN, P / F INTXLN POR, GSFO, LT BRN OIL, SLI ODOR, SLI YEL FLUOR

SH - RD / GRN

SH - RD

SS - CLR, F GR, WSRTD, GLAUC

SH - RD / GRN

LS - CRM / TAN, VF XLN, SUBCHKY / CHKY, SHLY + SLTY

SH - RD, SLTY IN PT

DOLO - WHT / CRM / TAN, VF / F XLN, SNDY IN PT, F / G INTXLN POR, SUC IN PT, GSFO, LT BRN OIL, SLI YEL FLUOR

DOLO - CRM, VF / F XLN, F / G INTXLN POR, GSFO, LT BRN OIL, G ODOR, NO FLUOR

SH - RD / GRN

DOLO - CRM, F XLN, P INTXLN POR, SLI SHOW DEAD OIL, BLK TARY OIL, SLI ODOR, NO FLUOR, W SH - GRN / RD

DOLO - CRM / TAN, F XLN, P / F INTXLN POR, ABUND OF DEAD OIL, BLK TARY OIL, F ODOR, NO FLUOR, W SH - GRN / RD

DOLO - CRM, F XLN, P / F INTXLN POR, DEAD OIL IN PT, BLK TARY OIL, SLI ODOR, NO FLUOR, W SH - GRN / RD

DOLO - CRM, F XLN, DNS, NS

DST #2
LKC 'I' & 'J'
3462'-3503'
30"-60"-30"-60"

IF: Surface blow, died in 6 min
ISI: No return
FF: No blow
FSI: No return

Rec: 30' SOCM (5% O, 95% M)

IH: 1733#
IF: 18#-24#
ISI: 112#
FF: 27#-30#
FSI: 85#
FH: 1691#

DST #3
Arbuckle
3569'-3591'
45"-75"-60"-90"

IF: Built very slowly to 1"
ISI: No return
FF: No blow
FSI: No return

Rec: 55' GO (10% G, 90% O), 60' SMWO (60% O, 35% W, 5% M), 5' GIP

IH: 1678#
IF: 20#-41#
ISI: 736#
FF: 45#-61#
FSI: 636#
FH: 1621#

SAMPLES WERE VERY POOR RIGHT AFTER TEST; LOST CIRCULATION RIGHT AFTER TEST

WT 9.0
VIS 54
LCM 4#

RTD 3660'