

JOB SUMMARY

PROJECT NUMBER SOK 3891	TICKET DATE 06/28/14
CUSTOMER REP Dale James	
EMPLOYEE NAME ROBERT BURRIS	

COUNTY Harper	STATE Kansas	COMPANY Tapstone Energy
LEASE NAME Chain Land 3509		
Well No. 1-3H	JOB TYPE Surface	

EMP NAME Robert Burris	ERIC PARSONS		
CODY BONITZ			
RJ STONEHOCKER			
Randall Irvin			

Form. Name _____ Type: _____

Packer Type _____ Set At 0

Bottom Hole Temp. 155 Pressure _____

Retainer Depth _____ Total Depth 800

Date	Called Out	On Location	Job Started	Job Completed
	6/28/2014	6/28/2014	6/28/2014	6/28/2014
Time	04:00	06:00	09:52	11:00

Tools and Accessories

Type and Size	Qty	Make
Auto Fill Tube	0	IR
Insert Float Va	0	IR
Centralizers	0	IR
Top Plug	0	IR
HEAD	0	IR
Limit clamp	0	IR
Weld-A	0	IR
Texas Pattern Guide Shoe	0	IR
Cement Basket	0	IR

Well Data

	New/Used	Weight	Size	Grade	From	To	Max. Allow
Casing		36#	9 5/8"		Surface	809	5,000
Liner							
Liner							
Tubing			0				
Drill Pipe							
Open Hole			12 1/4"		Surface	800	Shots/Ft.
Perforations							
Perforations							
Perforations							

Materials

Mud Type	WBM	Density	9	Lb/Gal
Disp. Fluid	Fresh Water	Density	8.33	Lb/Gal
Spacer type	Fresh Water	BBL	10	8.33
Spacer type		BBL		
Acid Type		Gal.		%
Acid Type		Gal.		%
Surfactant		Gal.		In
NE Agent		Gal.		In
Fluid Loss		Gal/Lb		In
Gelling Agent		Gal/Lb		In
Fric. Red.		Gal/Lb		In
MISC.		Gal/Lb		In

Perfpac Balls _____ Qty. _____

Other _____

Other _____

Other _____

Other _____

Hours On Location		Operating Hours		Description of Job
Date	Hours	Date	Hours	
6/28	4.0	6/28	0.7	Surface
Total	4.0	Total	0.7	

Pressures

MAX 1500 PSI	AVG 300 PSI
MAX 8 BPM	AVG 5.5 BPM
Cement Left in Pipe	
Feet 46 FT	Reason SHOE JOINT

Cement Data

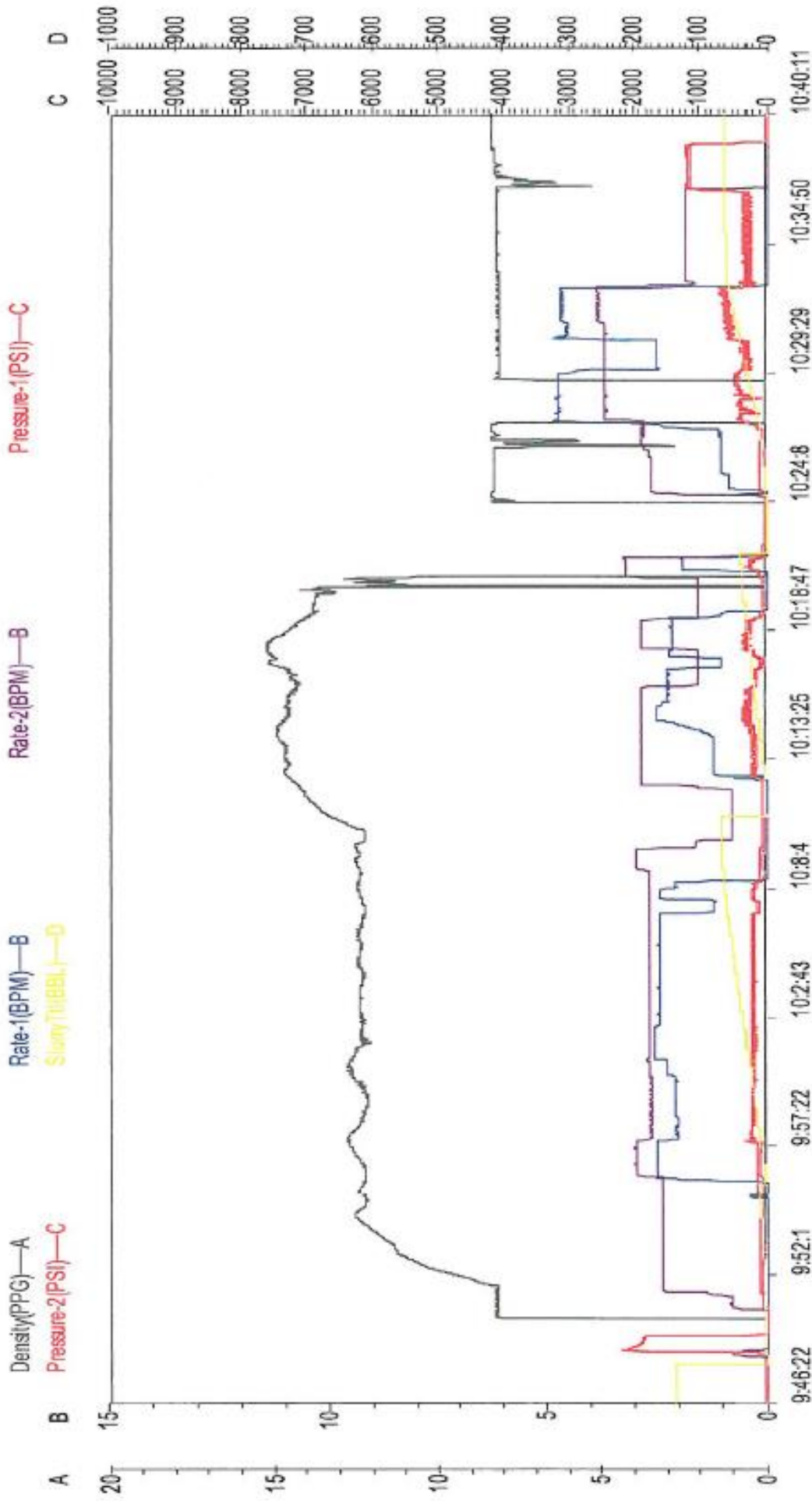
Stage	Sacks	Cement	Additives	W/Rq.	Yield	Lbs/Gal
1	200	Tex Lito Premium Plus 65	6% Gel - 2% Calcium Chloride - 1/4 pps Celloflake - 0.4% C-41P	11.11	2.01	12.40
2	140	Premium Plus (Class C)	2% Calcium Chloride - 1/4 pps Celloflake	6.32	1.32	14.80
3	0	0		0	0.00	0.00

Summary

10 Breakdown	Type: _____	Preflush: BBI	10.00	Type: Fresh Water
	MAXIMUM 1500 PSI	Load & Bkdn: Gal - BBI	N/A	Pad:Bbl -Gal N/A
	Lost Returns- N/A	Excess /Return BBI	42	Calc.Disp Bbl 59
	Actual TOC SURFACE	Calc. TOC:	SURFACE	Actual Disp. 57.50
Average	Bump Plug PSI: 1,000	Final Circ. PSI:	375	Disp:Bbl _____
ICP <u>5 Min.</u>	<u>10 Min.</u>	Cement Slurry BBI	105.0	
	<u>15 Min.</u>	Total Volume BBI	172.50	

CUSTOMER REPRESENTATIVE _____ SIGNATURE _____

Date:6/28/2014 Well Name:CHAIN LAND 3509 1-3H Location:HARPER CO, KS. Country: Operator: Supervisor:ROBERT BURRIS Type of Job:9 5/8" SURFACE CSG
 CEMENT Contact Address:TAPSTONE ENERGY Comment:UNIT #303



Chart

Job Data Sheet



COMPANY Tapstone Energy	PROJECT NUMBER SOK 3891	AFEWK ORDER 0	DATE 6/28/2014
CONTRACTOR Unit #303	Owner Same	LEGAL DESCRIPTION 1/35S/9W	API 15-077-21876-01-01
LEASE & WELL # Chain Land 3509 1-3H	COUNTY Harper	STATE Kansas	MILEAGE 100

DIRECTIONS
BYDOW ON NORTH ON HWY 50 TO STATE LINE - 3/4 MILES NORTH - 2 MILES EAST THROUGH WHITE GATE

Surface Intermediate Long String Plug Back
 Squeeze Acid PTA Other

Pumping Services	() H2S										
	Casing Size	Casing Weight	Thread	Thrg/DP Size	Thread	Plug. Cont.	Swage	Top Plug	Bottom Plug	% Excess	
	9 5/8"	36#	8rd			YES	YES	YES	NO	125%	
	Number and Type Units Pump Truck & Bulk Materials							Casing Depth	Hole Depth	Hole Size	
								800'	800'	12 1/4"	
Remarks						Est. BHST	KOP	Depth-TVD	Mud Weight/Type		
						155°			9.2ppg WBM		

Materials	LEAD	# of Sacks	Type	Additives	
	71.60	200	O-Tex Lite Premium Plus 6635	6% Gel - 2% Calcium Chloride - 1/4 pps Celloflake - 0.4% C-41P	
	H2O TO MIX	Weight PPG	Yield FT3/Sk		Water Gal/Sk
	52.90	12.40	2.01		11.11
	TAIL	# of Sacks	Type	Additives	
	32.91	140	Premium Plus (Class C)	2% Calcium Chloride - 1/4 pps Celloflake	
	H2O TO MIX	Weight PPG	Yield FT3/Sk		Water Gal/Sk
	21.07	14.80	1.32		6.32
		# of Sacks	Type	Additives	
		Weight PPG	Yield FT3/Sk	Water Gal/Sk	
	ACID	Type	Additives		
	Inhibitor	Surfactant	clay cont.		
	Spacer or Flush	Quantity	Type	Additives	
		10 bbls	Fresh Water		
	Spacer or Flush	Quantity	Type	Additives	
	Other	Quantity	Type	Additives	

Crew Called	Cementer	Pumper	Bulky	Bulky	Bulky
	Robert Burris	CODY BONITZ	RJ STONEHOCKER	Randall Irvin	ERIC PARSONS

Special Request	
-----------------	--

Sales Items	Casing Size	9 5/8"	Casing Weight	36#	Thread	LTC
	Guide Shoe		Float Shoe		Float Collar	Insert Float Valve
	Centralizers - Number		Size		Type	
	Wall Cleaners - Number		Type		MSC (DV Tool)	MSC Plug Set
	Limit Clamps		Thread lock		Other	
	Circulating Iron	9 5/8" SWAGE, BALE RACK, SW, DW				

Customer Rep. Dale James	Cell Phone 0	Office Phone	Fax	Time of Call
Call Taken By Jared Sisco				Date Ready
Crew Called ROBERT BURRIS				Time Ready
				Time