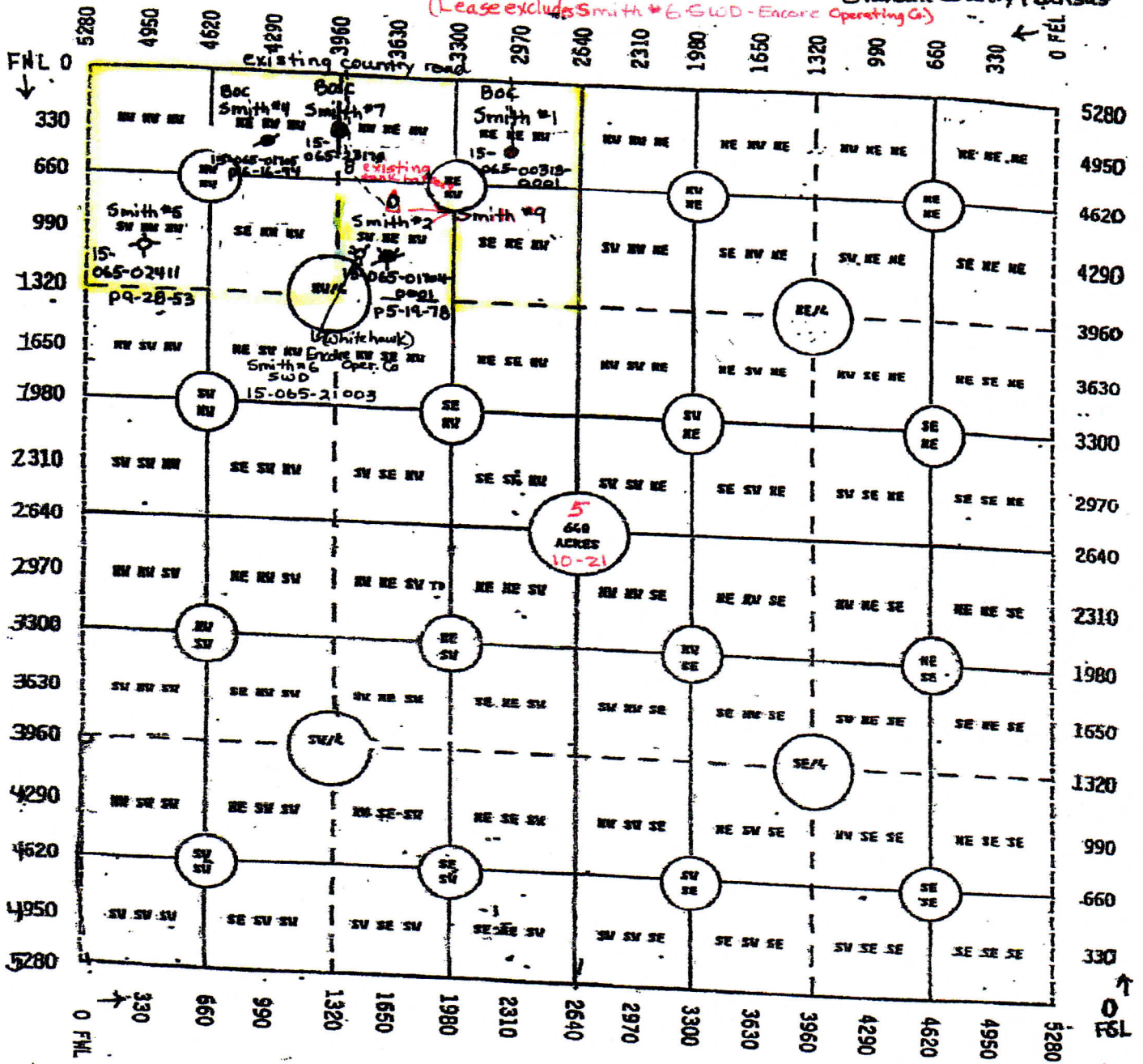


# Bowman Oil Company

## Smith Lease N/2 of NW/4 of 5-10-21

(Lease excludes Smith #6 SWD - Encore Operating Co) Graham County, Kansas



Smith #9  
 NESW NE NW  
 905' F.NL  
 1815' F.WL  
 NW corner

if production pipes set,  
 a new leadline will be laid  
 from #9 well to existing  
 tank battery