

L.D. DRILLING, INC.
LOCKWOOD LEASE
SW.1/4, SECTION 35, T11S, R31W
GOVE COUNTY, KANSAS

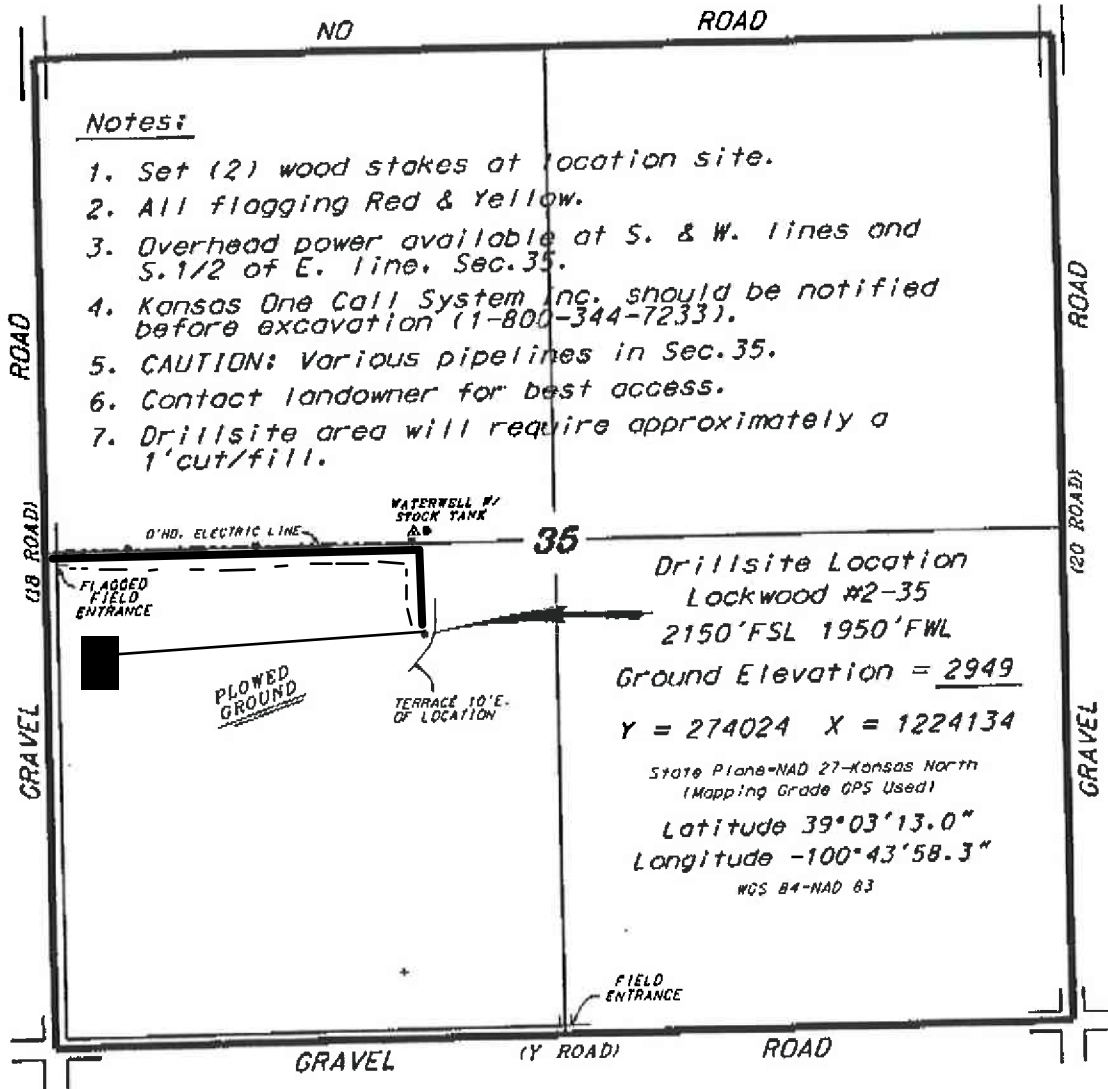
Directions:

From the intersection of Highway 23 and a E-W county road in Gove, Kansas go 13.7 miles West, then go 6.0 miles North to the SW corner of section 35, then go 0.40 miles North, then go 0.36 miles East to location.

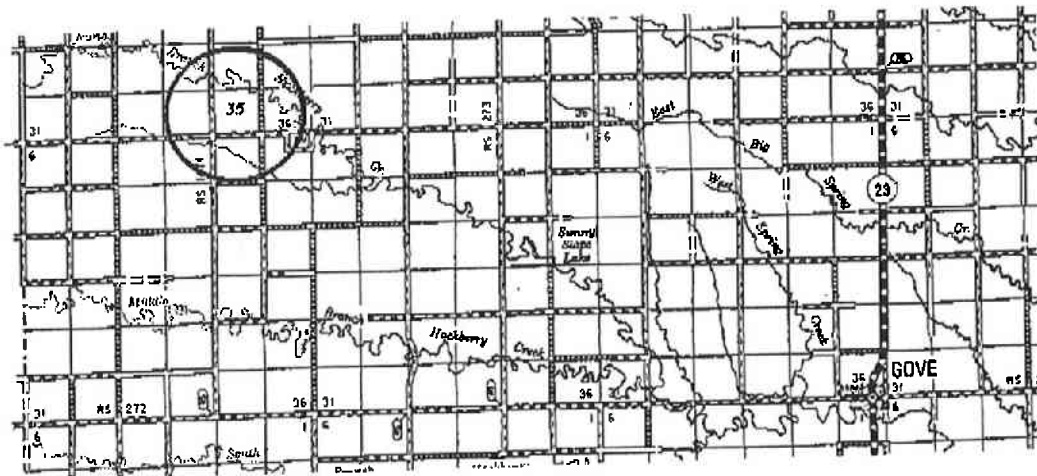
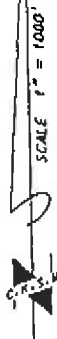
Notes:

1. Set (2) wood stakes at location site.
2. All flagging Red & Yellow.
3. Overhead power available at S. & W. lines and S.1/2 of E. line, Sec.35.
4. Kansas One Call System Inc. should be notified before excavation (1-800-344-7233).
5. CAUTION: Various pipelines in Sec.35.
6. Contact landowner for best access.
7. Drillsite area will require approximately a 1'cut/fill.

*Ingress and egress to location as shown on this plot is for usage only and may not be legally opened for public use. Contact landowner, tenant and county road department for access.



ROAD (20 ROAD) GRAVEL



* Controlling data is based upon the best maps and photographs available to us and upon a regular section of land containing 640 acres.
 * Approximate section lines were determined using the normal standard of care of oilfield surveyors practicing in the state of Kansas. The section corners, which establish the precise section lines, were not necessarily located, and the exact location of the drillsite location in the section is not guaranteed. Therefore, the operator securing this service and modifying this plot and all other parties relying thereon agree to hold Central Kansas Oilfield Services, Inc., its officers and employees harmless from all claims, costs and expenses and said entities released from any liability from incidents or consequential damages.
 * Elevations derived from National Geodetic Vertical Datum.

Date July 29, 2014