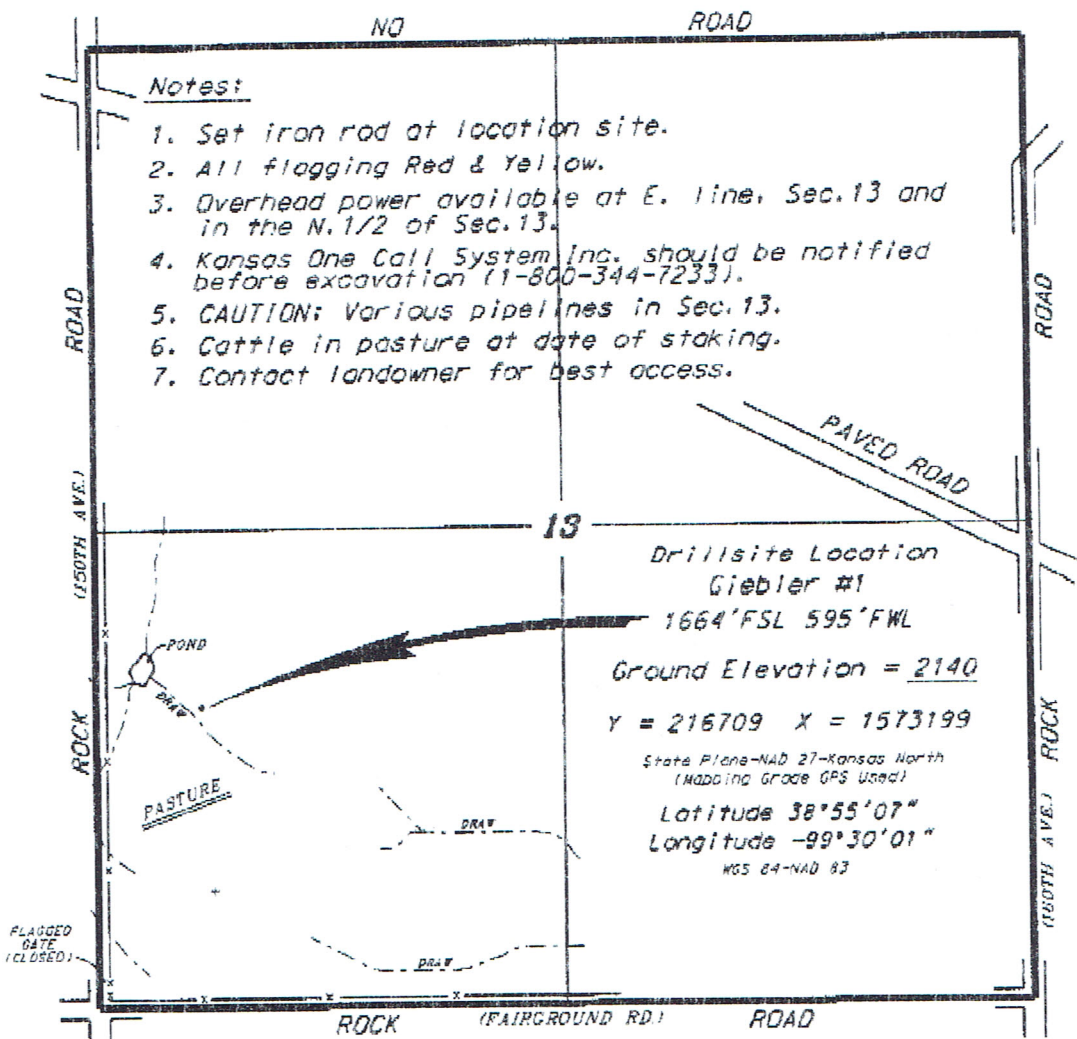


DOUBLE D'S, LLC  
GIEBLER LEASE  
SW. 1/4, SECTION 13, T13S, R20W  
ELLIS COUNTY, KANSAS

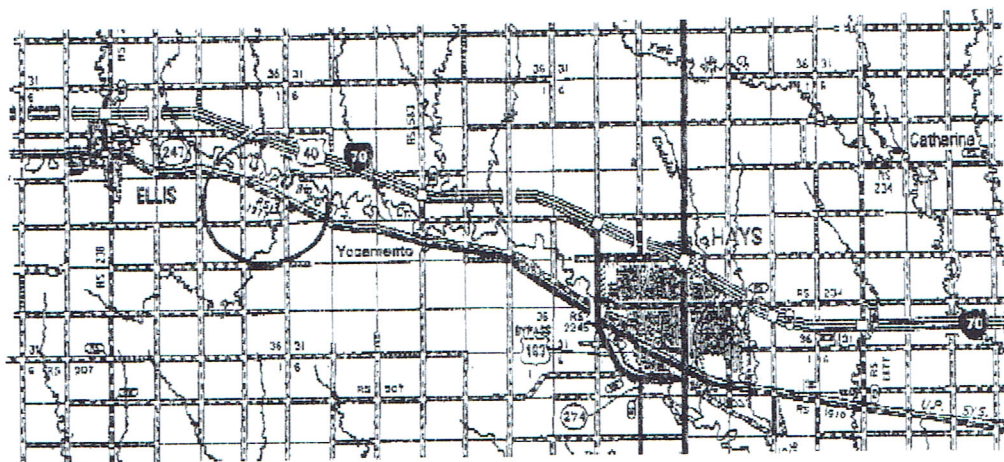


Notes:

1. Set iron rod at location site.
2. All flagging Red & Yellow.
3. Overhead power available at E. line, Sec.13 and in the N.1/2 of Sec.13.
4. Kansas One Call System, Inc. should be notified before excavation (1-800-344-7233).
5. CAUTION: Various pipelines in Sec.13.
6. Cattle in pasture at date of staking.
7. Contact landowner for best access.

ingress and egress to location as shown on this plat is for usage only and may not be legally opened for public use. Contact landowner, tenant and county road department for access.

SCALE 1" = 1000'



• Controlling data is based upon the best maps and photographs available to us and upon a regular section of 1000 containing GCS data.

• Approximate section lines were determined using the normal standard of care of oilfield surveyors practicing in the state of Kansas. The section corners, which establish the precise section lines, were not necessarily located, and the exact location of the drillsite location in the section is not guaranteed. Therefore, the operator should contact this service and accept this plat and all other parties relying thereon agree to hold Central Kansas Oilfield Services, Inc., the operators and employees harmless from all losses, costs and expenses and shall activities released from any liability from the details of CONDUIT/C) Damages.

• Elevations derived from National Geodetic Vertical Datum.

DATE July 24, 2014