



EARTH TECH OGL, INC
 PO BOX 683 8918th st
 HOOKER, OK 73945 GREAT BEND, KANSAS 67531
 1-888-543-8378

COMPANY: Berexco
WELL: Faye #1-18
FIELD: Ivanhoe Ext **COUNTY:** Finney **STATE:** KS
LOCATION: NW SE SE SE Sec. 18, Twnp 26S, R 33W
335' FSL, 437'FEL
Interval Logged: 3700 **To:** 5340 **G.L.:** 2911 **K.B:** 2923
Date Logged: 4/16/14 **To:** 4/25/14 **Spud Date:** 4/8/14
Rig: Beredco Drilling **Unit No.:** #1
Loggers: Ian Bosmeijer
Api No.: 15-055-22291-00-00
Filename: faye -1-18.mlw
Geologist: Pete Wilson

Created By MainLog

Abbreviations:

NB...New Bit
 CO...Circ Out
 NR...No Returns
 TG...Trip Gas
 WOB...Wt on Bit
 RPM...Rev/Min
 SG...Survey Gas
 DST...Drill Stem Test
 DS...Directional Survey
 CG...Connection gas
 LAT...Logged After Trip
 PP...Pump Pressure
 SPM...Strokes/Min
 DTG...Down Time Gas

Mud Data

WT..Weight
 PH..Acidity
 CHL..Chlorides
 V..Viscosity
 F..Filtrate
 SC..Solids Content

Lithology Symbols:

Anhydrite	Salt	Granite
Siltstone	Chert	Sandstone
Dolomite	Conglomerate	Limestone
Coal	Shale	Bentonite
Carb Shale	Granite Wash	Quartz Wash
Red Sh	Org Sh	Green Sh
Cust Sh1	Cust Sh2	Cust Sh3
Cust Sh4	Cust Sh5	Cust Sh6

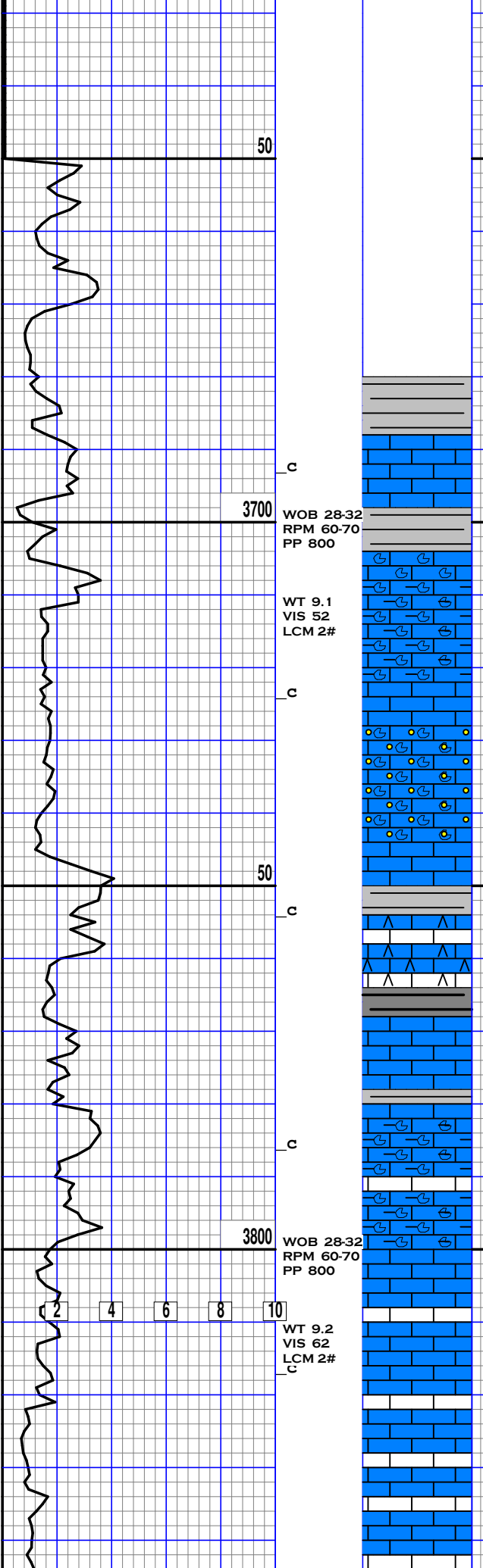
Gas Chromatograph Analysis:

HW
 C1
 C2
 C3
 IC4
 NC4
 IC5

Accessories

Glauconite Pyrite Fossils Oolites
 Fractures Cement

Drilling Rate MIN/FT	Lithology	Tr / pfg	Descriptions/Remarks	Total Gas/Chromatograph
2 4 6 8 10		Cut	BEREXCO LLC FAYE #1-18 BEREDCO RIG #1 TOOL P: GILBERT DAVILA	HW 10 100 1k 10k PPM



50

c

3700

WOB 28-32
RPM 60-70
PP 800

WT 9.1
VIS 52
LCM 2#

c

50

c

3800

WOB 28-32
RPM 60-70
PP 800

WT 9.2
VIS 62
LCM 2#

c

START 24 HR DATA ACQUISITION 4/16/14

SH-LT TO MD GY, FRM TO SFT
IP, SLI SLTY IP

LS- WHT TO OFF WHT, LT GY IP,
HD DNS TO SLI BRITT IP, F-XLN
TO SLI RE-XLN IP, IMBD SM FOS
IP, TR IMBD SH IP, TR PYR
CLSTR IP, DLL YEL MIN FLO IN
15%, NO VIS POR, NO SHOW

LS- OFF WHT TO LT CRM, HD TO
TR BRITT, F-XLN TO RE-XLN IP,
ABDT IMBD FOSS FRAG IP, TR
IMBD F-GRN ORTZ, TR LRG ORTZ
XLS, BRIT YEL MIN FLO IN 25%,
NO VIS POR, NO SHOW

LS- WHT TO OFF WHT, HD DNS TO
SFT, CRYPTO-XLN TO SUB-CHLKY,
CRM CHRT IN TRAY, SFT WHT
CHLK, DLL YEL MIN FLO IN 10%,
NO VIS POR, NO SHOW

SH- BLK SFT CARB

LS- WHT TO OFF WHT, CRM IP, H
DNS TO SFT IP, F-XLN TO TT
SUCRO, RE-XLN IP, SCAT FOSS
FRAG IN TRAY, IMBD SH IP, SFT
WHT CHLK IP, TR CRM TO GY CHR
IN TRAY, DLL YEL MIN FLO IN
25%, NO VIS POR, NO SHOW

LS-WHT TO CRM, HD TO FRM SFT,
SUCRO TO SUB-CHLKY, FRM TO SF
WHT CHLK, DLL YEL MIN FLO IN
10%, NO VIS POR, NO SHOW

HW

25-30 U. BG

25-30 U. BG

HW

25-30 U. BG

HW

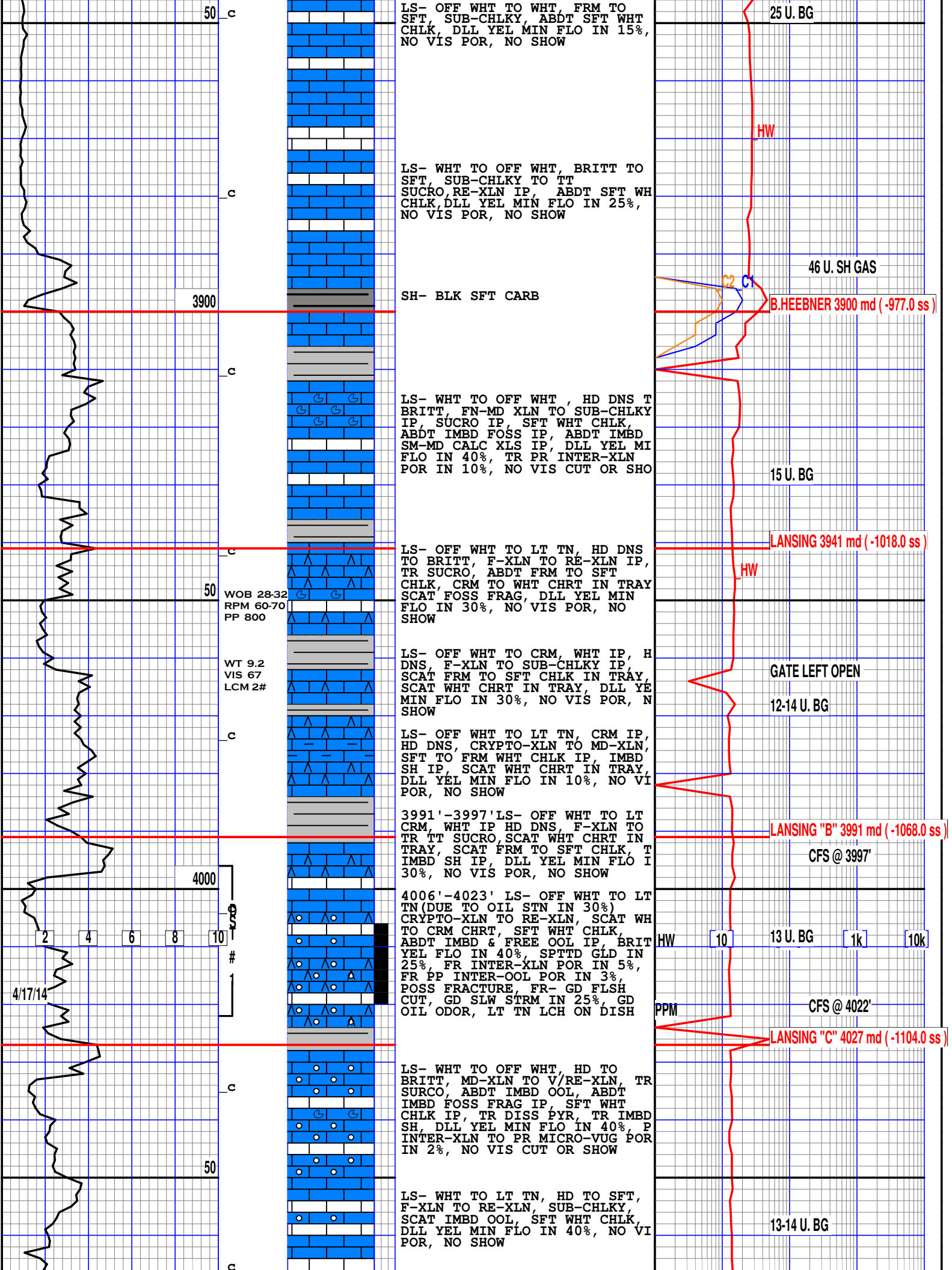
10

100

1k

10k

PPM



LS- OFF WHT TO WHT, FRM TO SFT, SUB-CHLKY, ABDT SFT WHT CHLK, DLL YEL MIN FLO IN 15%, NO VIS POR, NO SHOW

25 U. BG

LS- WHT TO OFF WHT, BRITT TO SFT, SUB-CHLKY TO TT SUCRO, RE-XLN IP, ABDT SFT WH CHLK, DLL YEL MIN FLO IN 25%, NO VIS POR, NO SHOW

HW

46 U. SH GAS

3900

SH- BLK SFT CARB

B. HEEBNER 3900 md (-977.0 ss)

LS- WHT TO OFF WHT, HD DNS T BRITT, FN-MD XLN TO SUB-CHLKY IP, SUCRO IP, SFT WHT CHLK, ABDT IMBD FOSS IP, ABDT IMBD SM-MD CALC XLS IP, DLL YEL MI FLO IN 40%, TR PR INTER-XLN POR IN 10%, NO VIS CUT OR SHO

15 U. BG

LANSING 3941 md (-1018.0 ss)

LS- OFF WHT TO LT TN, HD DNS TO BRITT, F-XLN TO RE-XLN IP, TR SUCRO, ABDT FRM TO SFT CHLK, CRM TO WHT CHRT IN TRAY SCAT, FOSS FRAG, DLL YEL MIN FLO IN 30%, NO VIS POR, NO SHOW

HW

WOB 28-32 RPM 60-70 PP 800

LS- OFF WHT TO CRM, WHT IP, HD DNS, F-XLN TO SUB-CHLKY IP, SCAT FRM TO SFT CHLK IN TRAY, SCAT WHT CHRT IN TRAY, DLL YE MIN FLO IN 30%, NO VIS POR, N SHOW

GATE LEFT OPEN

WT 9.2 VIS 67 LCM 2#

12-14 U. BG

LS- OFF WHT TO LT TN, CRM IP, HD DNS, CRYPTO-XLN TO MD-XLN, SFT TO FRM WHT CHLK IP, IMBD SH IP, SCAT WHT CHRT IN TRAY, DLL YEL MIN FLO IN 10%, NO VI POR, NO SHOW

LANSING "B" 3991 md (-1068.0 ss)

3991'-3997' LS- OFF WHT TO LT CRM, WHT IP HD DNS, F-XLN TO TR TT SUCRO, SCAT WHT CHRT IN TRAY, SCAT FRM TO SFT CHLK, T IMBD SH IP, DLL YEL MIN FLO I 30%, NO VIS POR, NO SHOW

CFS @ 3997'

4006'-4023' LS- OFF WHT TO LT TN (DUE TO OIL STN IN 30%) CRYPTO-XLN TO RE-XLN, SCAT WH TO CRM CHRT, SFT WHT CHLK, ABDT IMBD & FREE OOL IP, BRIT YEL FLO IN 40%, SPTTD GLD IN 25%, FR INTER-XLN POR IN 5%, FR PP INTER-OOL POR IN 3%, POSS FRACTURE, FR- GD FL SH CUT, GD SLW STRM IN 25%, GD OIL ODOR, LT TN LCH ON DISH

HW

10

13 U. BG

1k

10k

4000

SS

#

4/17/14

PPM

CFS @ 4022'

LANSING "C" 4027 md (-1104.0 ss)

LS- WHT TO OFF WHT, HD TO BRITT, MD-XLN TO V/RE-XLN, TR SURCO, ABDT IMBD OOL, ABDT IMBD FOSS FRAG IP, SFT WHT CHLK IP, TR DISS PYR, TR IMBD SH, DLL YEL MIN FLO IN 40%, P INTER-XLN TO PR MICRO-VUG POR IN 2%, NO VIS CUT OR SHOW

HW

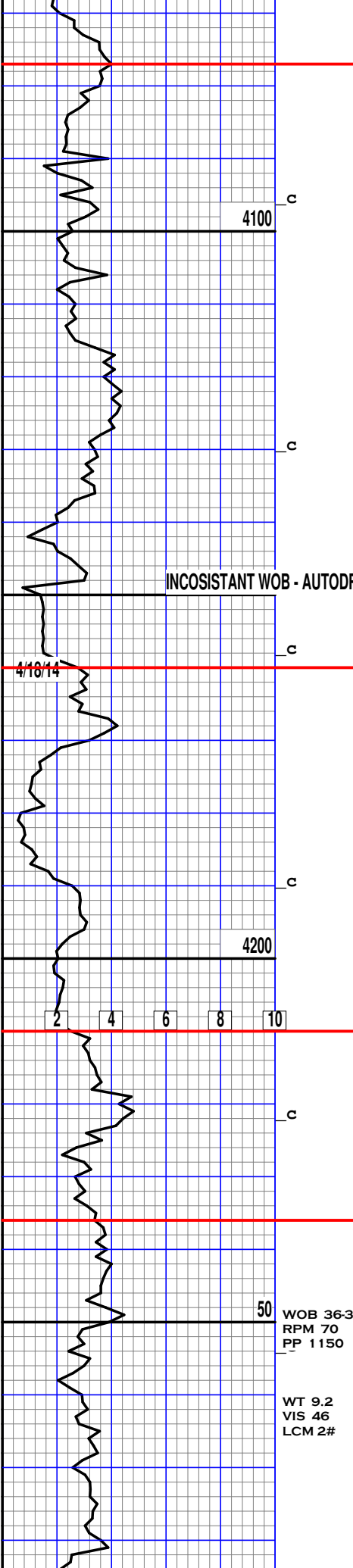
50

13-14 U. BG

LS- WHT TO LT TN, HD TO SFT, F-XLN TO RE-XLN, SUB-CHLKY, SCAT IMBD OOL, SFT WHT CHLK, DLL YEL MIN FLO IN 40%, NO VI POR, NO SHOW

50

c



LS- CRM TO OFF WHT, HD TO BRITT, FN-MD XLN, RE-XLN TO SUB CHLKY, FRM TO SFT CHLK, T IMBD OOL, TR CRM CHRT IN TRAY DLL YEL MIN FLO IN 60%, PR OOLIMOLDIC POR IN 1%, NO VIS CUT OR SHOW

LS- OFF WHT TO BRN IP, HD DNS TO BRITT, F-XLN TO SLI RE-XLN IP, FRM TO SFT CHLK IP, TR IMBD FOSS FRAG, TR IMBD SH IP DLL YEL MIN FLO IN 25%, NO VI POR, NO SHOW

LS- OFF WHT TO LT GY, HD DNS, F-XLN SUB-SUCRO MTRX, TR FRM TO SFT CHLK IN TRAY, TR IMBD SH IP, DLL YEL MIN FLO IN 40% NO VIS POR, NO SHOW

LS- OFF WHT TO LT GY, HD DNS TO SFT IP, F-XLN SUB-SUCRO MTRX, ABDT SFT WHT CHLK IP, T IMBD SH, DLL YEL MIN FLO IN 30%, NO VIS POR, NO SHOW

LS- OFF WHT TO LT GY, HD DNS TO BRITT, FN-MD XLN, RE-XLN IP, TR IMBD FOSS FRAG, TR IMB SH IP, DLL YEL MIN FLO IN 40% NO VIS POR, NO SHOW

LS- WHT TO OFF WHT, HD TO BRITT, SUB-CHLKY TO TR TT SUCRO, RE-XLN IP, ABDT SFT WH CHLK, DLL YEL MIN FLO IN 30%, NO VIS POR, NO SHOW

LS- OFF WHT TO LT BRN, HD DNS TO BRITT, FN-MD XLN, V/ RE-XL IP, ABDT IMBD OOL IP, SCAT IMBD FOSS FRAG IP, TR SFT TO FRM WHT CHLK, DLL YEL MIN FLO IN 50%, PR TO TR FR OOLIMOLDI POR IN 10%, TR LT GASSY FLSH CUT, NO SLW STRM, NO ODOR

LS- WHT TO GY, HD DNS TO SFT IP, F-XLN TO SUB-CHLKY, RE-XLN IP, FRM TO SFT CHLK IP, SCAT IMBD RE-XLN FOSS FRAG, TR WHT CHRT IN TRAY, TR IMBD SH IP, DLL YEL MIN FLO IN 60% NO VIS CUT OR SHOW

LS- WHT TO OFF WHT, HD TO BRITT SFT IP, MD-XLN TO RE-XLN, TR TT SUCRO IP, FRM T SFT WHT CHLK, IMBD BRN TO BLK SH, SCAT IMBD OOL IP, SCAT PY CLSTR IP, DLL YEL MIN FLO IN 40%, PR OOLIMOLDIC POR IN 1%, PR PP POR IN 1%, NO VIS CUT O SHOW

LS- CRM TO OFF WHT, HD BRITT TO SFT, MD-XLN TO RE-XLN,

LANSING "D" 4077 md (-1154.0 ss)

15 U. BG

CARBIDE TEST

12 U. BG

INCOSISTANT WOB - AUTODRILLER

LANSING "F" 4160 md (-1237.0 ss)

12 U. BG

4/18/14

LANSING G 4210 md (-1287.0 ss)

CFS@ 4215'

17 U. GAS SHOW

LANSING "H" 4236 md (-1313.0 ss)

CFS @ 4248

WOB 36-38
RPM 70
PP 1150

WT 9.2
VIS 46
LCM 2#

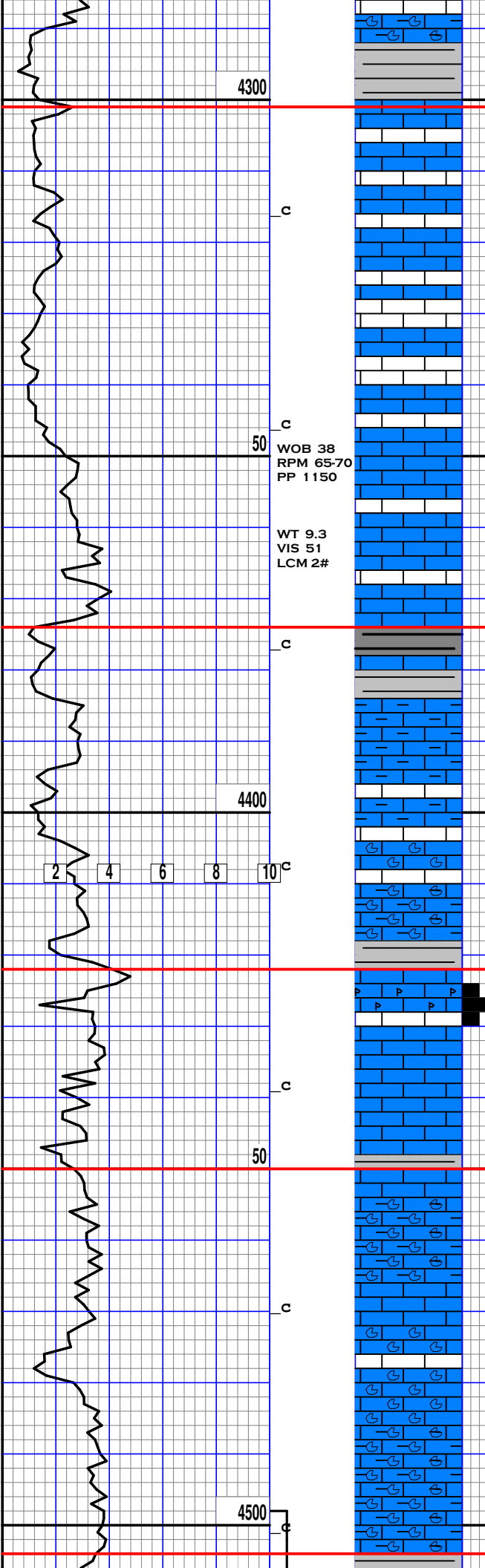
HW

10

10k

PPM

9-10 U. BG



SUB-CHLKY IP, FRM TO SFT CHLK IP, ABDT IMBD FOSS FRAG IP, T IMBD SH IP, DLL YEL MIN FLO I 30%, NO VIS POR, NO SHOW

SH- GY, FRM BLKY, SMTH TXT

LANSING "I" 4301 md (-1378.0 ss)

LS- WHT TO LT CRM, SFT TO TR BRITT, SUB-CHLKY TO TR TT SUCRO, ABDT SFT GMMY CHLK, DL YEL MIN FLO IN 25%, NO VIS POR, NO SHOW

10 U. BG

LS- WHT, SFT TO GMMY TR BRITT, SUB-CHLKY TO MD-XLN, SF GMMY TO FRM CHLK, TR IMBD FOS FRAG, DLL YEL MIN FLO IN 50%, NO VIS POR, NO SHOW

50 WOB 38 RPM 65-70 PP 1150

WT 9.3 VIS 51 LCM 2#

LS-OFF WHT WHT TO LT GY, HD DNS TO SFT, FN-MD XLN TO SUB-CHLKY, SFT WHT CHLK IP, DLL YEL MIN FLO IN 10%, NO VI POR, NO SHOW

KANSAS CITY "A" 4374 md (-1451.0 ss)

SH- MD GY TO LT GRN, BLK IP, FRM BLKY TO SFT, CARB IP, SMT TXT

10-12 U. BG

LS- LT TN TO LT GY, HD DNS, F-XLN, TR SFT WHT CHLK, TR IMBD SH, DLL YEL MIN FLO IN 10%, NO VIS POR, NO SHOW

4400

LS- OFF WHT TO LT GY, HD DNS TO BRITT, SFT IP, F-XLN TO SU CHLKY IP, TR IMBD FOSS FRAG, TR IMBD SH IP, DLL YEL MIN FL IN 30%, NO VIS POR, NO SHOW

HW 10 100 1k 10k

KANSAS CITY "B" 4422 md (-1499.0 ss)

4425'-4428' LS- WHT TO LT TN (DUE TO OIL STN IN 10%), F-XL TO SUB-CHLKY TT SUCRO IP, RE-XLN IP, SFT WHT CHLK IP, T PYR CLSTR, DLL YEL MIN FLO IN 40%, SPTTD GLD FLO IN 5%, PR-INTER-XLN POR IN 2%, PR MICRO VUG POR IN 2%, FR-GD FLSH CUT GD SLW STRM IN 10%, LT OIL ODOR

22 U. SHOW

KANSAS CITY "C" 4450 md (-1527.0 ss)

LS- OFF WHT CRM TO BUFF, HD DNS, FN-MD XLN, RE-XLN IP, SL SHLY IP, TR IMBD FOSS FRAG, DLL YEL MIN FLO IN 15%, NO VI POR, NO SHOW

12-14 U. BG

LS- WHT TO OFF WHT, HD TO BRITT, SFT IP, F-XLN TO SLI RE-XLN IP, TR SUB-CHLKY, ABDT IMBD FOSS FRAG IP, SFT WHT CHLK IP, DLL YEL MIN FLO IN 25%, NO VIS POR, NO SHOW

4500

BKC 4504 md (-1581.0 ss)

4/19/14

DST #3

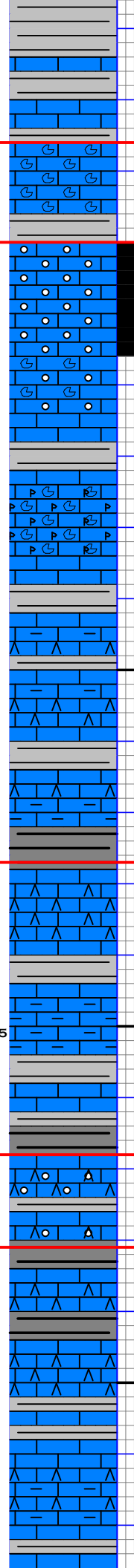
4600

2 4 6 8 10

WOB 40
RPM 60-65
PP 1150

WT 9.3
VIS 5
LCM 2#

4700



SH- LT GY TO LT GRN, BRN IP, HD TO FRM, BLKY, TR' SFT, SMTH TO SLI SLTY TXT

4525'-4536' LS- WHT TO CRM, HD DNS TO BRITT, MD-XLN TO SUB-CHLKY, SCAT IMBD FOSS FRAG, TR IMBD SH IP, DLL YEL MIN FLO IN 30%, NO VIS POR, N SHOW

4540'-4556' LS- OFF WHT TO LT TN (DUE TO OIL STN IN 50%), HD TO BRITT, MD-XLN TO V/RE-XLN, SUCRO IP, ABDT IMBD OOL, BRIT YEL MIN FLO IN 50%, DLL GLD FLO IN 20%, GD OOLIMOLDIC PORIN 30%, FR-GD MICRO-VUG POR IN 10%, FR INTER-XLN POR IN 5%, GD FLSH CUT, GD SLW STRM IN 25%, GD OIL ODOR, LT TN LCH ON DISH

4556'-4560' LS- WHT TO GY, HD DNS, F-XLN TO SLI RE-XLN, ABD IMBD OOL IP, TR FRM CHLK, DLL YEL MIN FLO IN 50%, NO SHOW
SH- GY, SFT GMMY TO FRM, SLI CALC, SMTH TXT

LS- LT GY TO OFF WHT, HD DNS F-XLN TO SLI SUB-CHLKY, SCAT IMBD & FREE FOSS FRAG, TR PYR CLSRT, TR SFT WHT CHLK, DLL YEL MIN FLO IN 25%, NO VIS POR, NO SHOW

LS- WHT GY TO LT TN, HD DNS TO TR BRITT, CRYPTO-FN XLN, TR T SUCRO, IMBD SH IP, SCAT IMBD AND FREE TN CHRT, TR IMBD FOS FRAG, TR SFT WHT CHLK, DLL YE MIN FLO IN 10%, NO VIS POR, N SHOW

SH- BLK TO GY, FRM TO SFT, CARB, SMTH TXT

LS- WHT TO LT GY, HD TO SFT T BRITT, F-XLN TO SUB-CHLKY, RE-XLN IP, SCAT WHT TO CRM CHRT IN TRAY, TR IMBD PYR CLSTR, TR FOSS FRAG, DLL YEL MIN FLO IN 30%, NO VIS POR, N SHOW

LS- WHT TO OFF WHT, HD DNS TO SFT, F-XLN TO SUB-CHLKY, TR RE-XLN IP, IMBD SH IP, SFT WH CHLK, ABDT IMBD OOL IP, DLL YEL MIN FLO IN 40%, NO VIS POR, NO SHOW

SH-BLK SFT CARB

LS- OFF WHT TO GY, LT TN IP, HD DNS, F-XLN TO TR RE-XLN, ABDT IMBD OOL IP, TR WHT CHRT IN TRAY, TR SFT WHT CHLK, DLL YEL MIN FLO IN 25%, NO VIS POR, NO SHOW

LS- WHT TO LT GY, TN IP, HD DNS TO SFT, CRYPTO-FN XLN TO SUB-CHLKY, IMBD CARB SH IP, SFT WHT CHLK, TR GY CHRT IN TRAY, DLL YEL MIN FLO IN 25%, NO VIS POR, NO SHOW

LS- OFF WHT TO CRM, LT GY IP, HD DNS TO TR SFT, F-XLN TO TR SUB-CHLKY, SCAT WHT TO GY CHRT IN TRAY, IMBD SH IP, DLL YEL MIN FLO IN 30%, NO VIS POR, IN SHOW

11 U. BG

MARMATON 4526 md (-1603.0 ss)

CFS @ 4534'

MARMATON "B" 4540 md (-1617.0 ss)

620 U. SHOW

CFS @ 4549'

200 U. BG

600 U. SHOW 4/21/14

400 U. BG AFTER DST #3

200-250 U. BG

HW 10 100 1k 10k

PPM

PAWNEE 4627 md (-1704.0 ss)

CFS@4640'

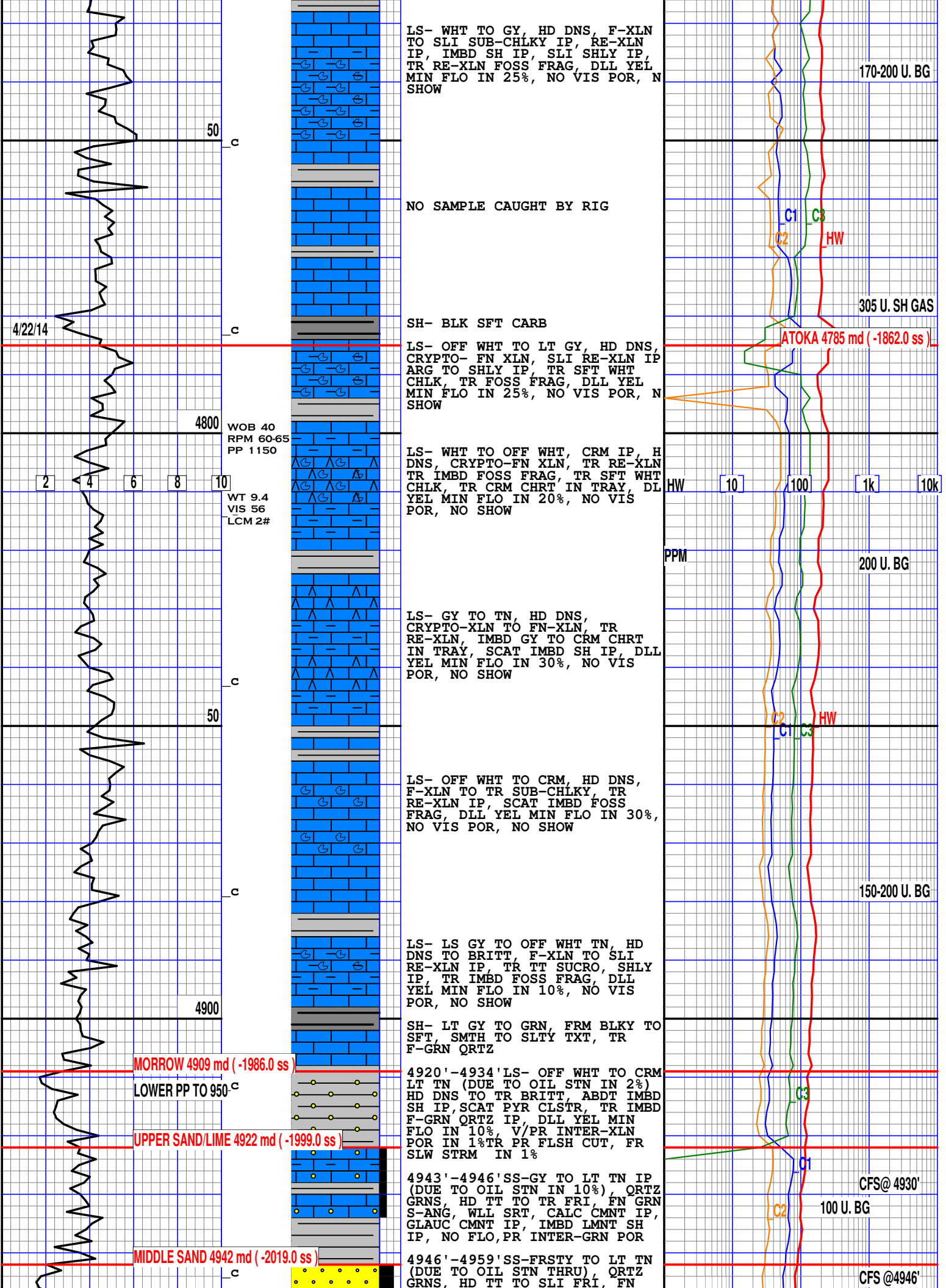
200-250 U. BG

FT. SCOTT 4668 md (-1745.0 ss)

CFS@4676'

CHEROKEE 4681 md (-1758.0 ss)

200 U. BG



LS- WHT TO GY, HD DNS, F-XLN TO SLI SUB-CHLKY IP, RE-XLN IP, IMBD SH IP, SLI SHLY IP, TR RE-XLN FOSS FRAG, DLL YEL MIN FLO IN 25%, NO VIS POR, N SHOW

170-200 U. BG

50

NO SAMPLE CAUGHT BY RIG

C1 C3
C2 HW

305 U. SH GAS

4/22/14

c

SH- BLK SFT CARB

ATOKA 4785 md (-1862.0 ss)

LS- OFF WHT TO LT GY, HD DNS, CRYPTO- FN XLN, SLI RE-XLN IP ARG TO SHLY IP, TR SFT WHT CHLK, TR FOSS FRAG, DLL YEL MIN FLO IN 25%, NO VIS POR, N SHOW

4800 WOB 40 RPM 60-65 PP 1150

LS- WHT TO OFF WHT, CRM IP, HD DNS, CRYPTO-FN XLN, TR RE-XLN TR IMBD FOSS FRAG, TR SFT WHT CHLK, TR CRM CHRT IN TRAY, DL YEL MIN FLO IN 20%, NO VIS POR, NO SHOW

PPM 10 100 1k 10k

2 4 6 8 10

WT 9.4 VIS 56 LCM 2#

200 U. BG

LS- GY TO TN, HD DNS, CRYPTO-XLN TO FN-XLN, TR RE-XLN, IMBD GY TO CRM CHRT IN TRAY, SCAT IMBD SH IP, DLL YEL MIN FLO IN 30%, NO VIS POR, NO SHOW

50

C2 C3
C1 HW

LS- OFF WHT TO CRM, HD DNS, F-XLN TO TR SUB-CHLKY, TR RE-XLN IP, SCAT IMBD FOSS FRAG, DLL YEL MIN FLO IN 30%, NO VIS POR, NO SHOW

150-200 U. BG

c

LS- LS GY TO OFF WHT TN, HD DNS TO BRITT, F-XLN TO SLI RE-XLN IP, TR TT SUCRO, SHLY IP, TR IMBD FOSS FRAG, DLL YEL MIN FLO IN 10%, NO VIS POR, NO SHOW

4900

SH- LT GY TO GRN, FRM BLKY TO SFT, SMTH TO SLTY TXT, TR F-GRN QRTZ

MORROW 4909 md (-1986.0 ss)

4920'-4934' LS- OFF WHT TO CRM LT TN (DUE TO OIL STN IN 2%) HD DNS TO TR BRITT, ABDT IMBD SH IP, SCAT PYR CLSTR, TR IMBD F-GRN QRTZ IP, DLL YEL MIN FLO IN 10%, V/PR INTER-XLN POR IN 1% TR PR FLSH CUT, FR SLW STRM IN 1%

LOWER PP TO 950 c

C3

UPPER SAND/LIME 4922 md (-1999.0 ss)

4943'-4946' SS-GY TO LT TN IP (DUE TO OIL STN IN 10%), QRTZ GRNS, HD TT TO TR FRI, FN GRN S-ANG, WLL SRT, CALC CMNT IP, GLAUC CMNT IP, IMBD LMNT SH IP, NO FLO, PR INTER-GRN POR

CFS@ 4930'

C2 C1

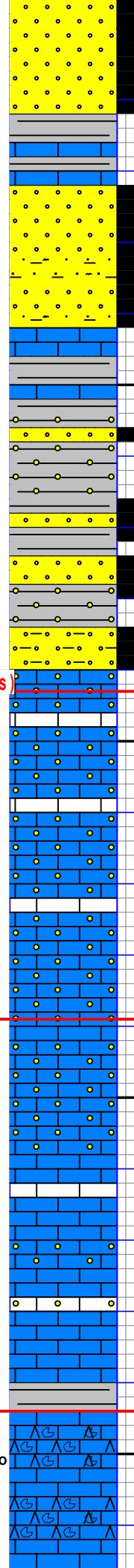
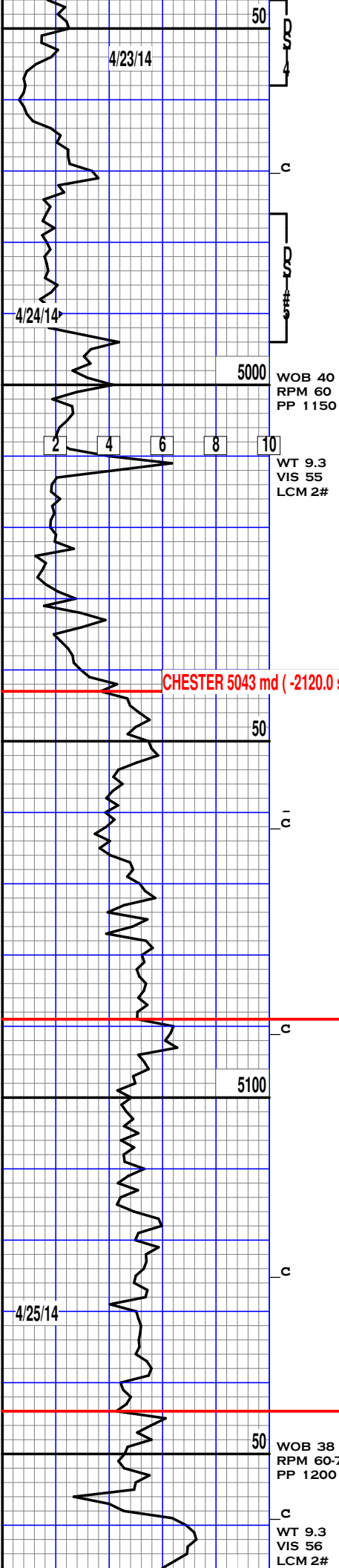
100 U. BG

MIDDLE SAND 4942 md (-2019.0 ss)

4946'-4959' SS-FRSTY TO LT TN (DUE TO OIL STN THRU), QRTZ GRNS, HD TT TO SLI FRI, FN

CFS@ 4946'

c



GRN, S-ANG TO S-RND GRNS, SIL CMNT IP, V/DLL GLD FLO THRU, PR-FR TR GD INTER-GRN POR IN 70%, EXCEL FLSH CUT, GD SLW STRM IN 40%, TN LCH ON DISH, LIVE OIL ON SAMPLE

LS- CRM, HD TO BRITT, F-XLN T SLI RE-XLN IP, ABDT IMBD SH IP, DLL YEL MIN FLO IN 40%, N VIS POR, NO SHOW

SS- FRSTY TO LT TN (DUE TO OIL STN THRU), LT GY IP, HD TT TO FRI, QRTZ GRNS, FN GRN, S-ANG TO S-RND, WLL SRT, SIL CMNT IP, TR IMBD SH IP, TR IMBD GLAUC IP DLL GLD FLO THRU, FR TO TR GD INTER-GRN POR IN 70% EXCEL FLSH CUT, GD SLW STRM IN 70%, LIVE OIL ON SAMPLE, LT TN LCH ON DISH, FR OIL ODOR

SH- LT TO MD GY, BLK IP, FRM BLKY TO SFT, IMBD F-GRN QRTZ, SLI SLTY IP

SS- FRSTY TO LT TN (DUE TO OIL STN IN 60%), HD TT TO TR FRI, FN GRN, S-ANG TO S-RND GRNS, SIL CMNT IP, TR CALC CMNT, ABD IMBD SH IP, GLAUC CMNT IP, DL GLD FLO IN 25%, PR INTER-GRN POR IN 25%, GD FLSH CUT, FR SLW STRM IN 25%

SS- FRSTY TO GY, (LT TN DUE T OIL STN IN 40%), HD TT TO FRI FN GRN, WLL SRT, SIL CMNT, CALC CMNT IP, IMBD SH IP, SFT WHT CHLK IP, TR GLAUC, TR PYR NO FLO, PR INTER-GRN POR IN 50%, FR FLSH CUT, GD SLW STRM IN 10%

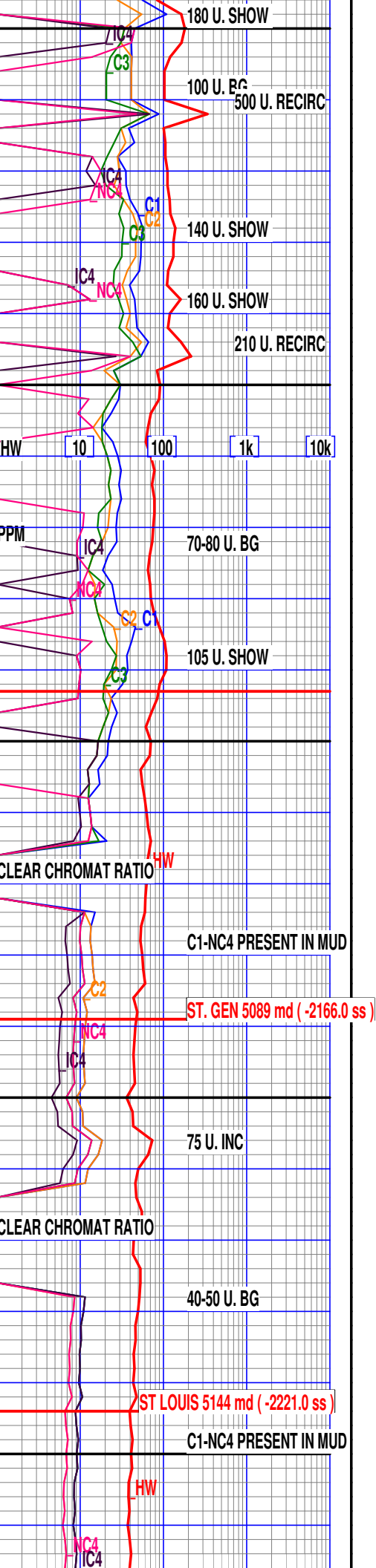
LS- WHT TO OFF WHT, HD DNS TO BRITT, F-XLN TO SUB-CHLKY, SF WHT CHLK IP, TR IMBD F-GRN QRTZ IP, DLL YEL MIN FLO IN 40%, NO VIS POR, NO SHOW

LS-WHT TO OFF WHT, TR SPTTD BLK OIL STN IN 1%, HD DNS TO BRITT, F-XLN TO TT SUCRO, SUB CHLKY IP, IMBD F-GRN QRTZ IP, TR IMBD SH IP, DLL YEL MIN FLO IN 50%, NO VIS POR, NO SHOW

LS- WHT TO OFF WHT, TR SPTTD BLK OIL STN IN %1, HD DNS TO BRITT, F-XLN TO TT SUCRO, IMBD F-GRN QRTZ IP, DLL YEL MIN FLO IN 40%, NO VIS POR, NO SHOW

LS- WHT TO OFF WHT, TR LT TN, HD DNS TO BRITT, F-XLN TO TR, SUB-CHLKY, TR IMBD F-GRN QRTZ DLL YEL MIN FLO IN 40%, NO VIS POR, NO SHOW

LS- LT GY TO LT CRM, HD DNS, F-XLN TO TR TT SUCRO, TR RE-XLN IP, TR WHT CHRT, TR FOSS FRAG, DLL YEL MIN FLO IN 25%, NO VIS POR, NO SHOW



CHESTER 5043 md (-2120.0 ss)

ST. GEN 5089 md (-2166.0 ss)

ST LOUIS 5144 md (-2221.0 ss)

4/23/14

4/24/14

4/25/14

WOB 40
RPM 60
PP 1150

WT 9.3
VIS 55
LCM 2#

WOB 38
RPM 60-70
PP 1200

WT 9.3
VIS 56
LCM 2#

180 U. SHOW
100 U. B.C.
500 U. RECIRC
140 U. SHOW
160 U. SHOW
210 U. RECIRC

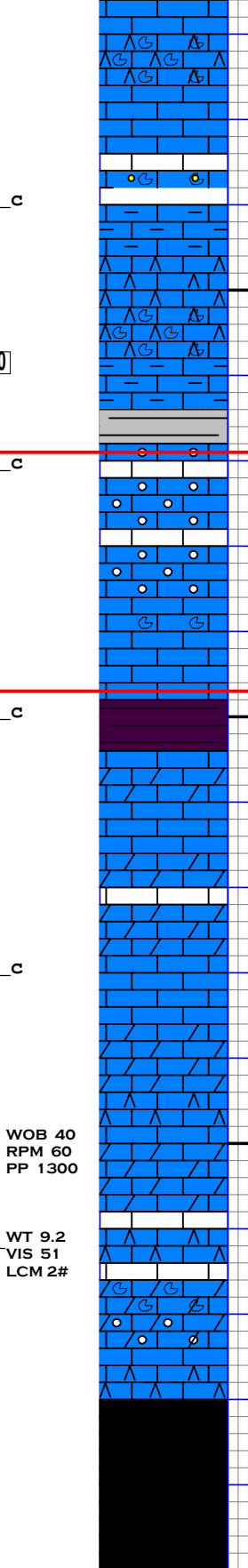
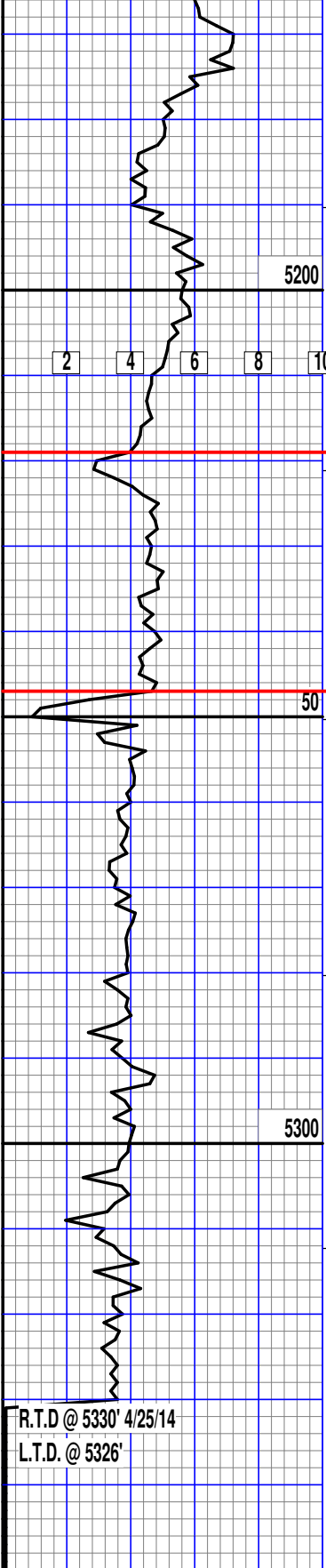
70-80 U. BG
105 U. SHOW

C1-NC4 PRESENT IN MUD

75 U. INC

40-50 U. BG

C1-NC4 PRESENT IN MUD



LS- LT GY TO LT TN, HD DNS TO TR BRITT, F-XLN, IMBD SH IP, TR IMBD FOSS FRAG, TR WHT TO CRM CHRT IN TRAY, DLL YEL MIN FLO IN 25%, NO VIS POR, NO SHOW

LS- OFF WHT TO LT GY, HD DNS TO BRITT, F-XLN TO SUB-CHLKY, FRM TO SFT CHLK IP, TR IMBD FOSS FRAG, TR IMBD F-GRN QRTZ TR IMBD SH IP, DLL YEL MIN FLO IN 30%, NO VIS POR, NO SHOW

LS- WHT TO OFF WHT, HD DNS TO BRITT IP, F-XLN TO TR SUB-CHLKY, TR RE-XLN, SCAT IMBD SM OOL IP, SFT WHT CHLK IP, DLL YEL MIN FLO IN 40%, NO VIS POR, NO SHOW

LS- OFF WHT TO CRM, HD DNS TO BRITT, F-XLN TO TR RE-XLN, SUB-CHLKY IP, FRM TO SFT CHLK IP, TR IMBD SM OOL TR IMBD WHT TO CRM CHRT, TR IMBD FOSS FRAG, DLL YEL MIN FLO IN 30%, NO VIS POR, NO SHOW

DOLO- LT GY TO LT TN IP, HD DNS, F-XLN TO SLI RE-XLN, IMBD SM-MD DOLO GRNS IP, SLI CALC IP, TR SFT WHT CHLK, TR WHT CHRT, NO FLO, NO VIS POR, NO SHOW

LS- OFF WHT TN TO CRM, HD DNS TO BRITT, F-XLN TO TT SUCRO, TR RE-XLN IP, SLI DOLO IP, TR SFT WHT CHLK, DLL YEL MIN FLO IN 40%, NO VIS POR, NO SHOW

LS- CRM TO LT TN, HD DNS TO BRITT IP, F-XLN TO TR RE-XLN, SLI DOLO IP, DLL YEL MIN FLO IN 25%, NO VIS POR, NO SHOW

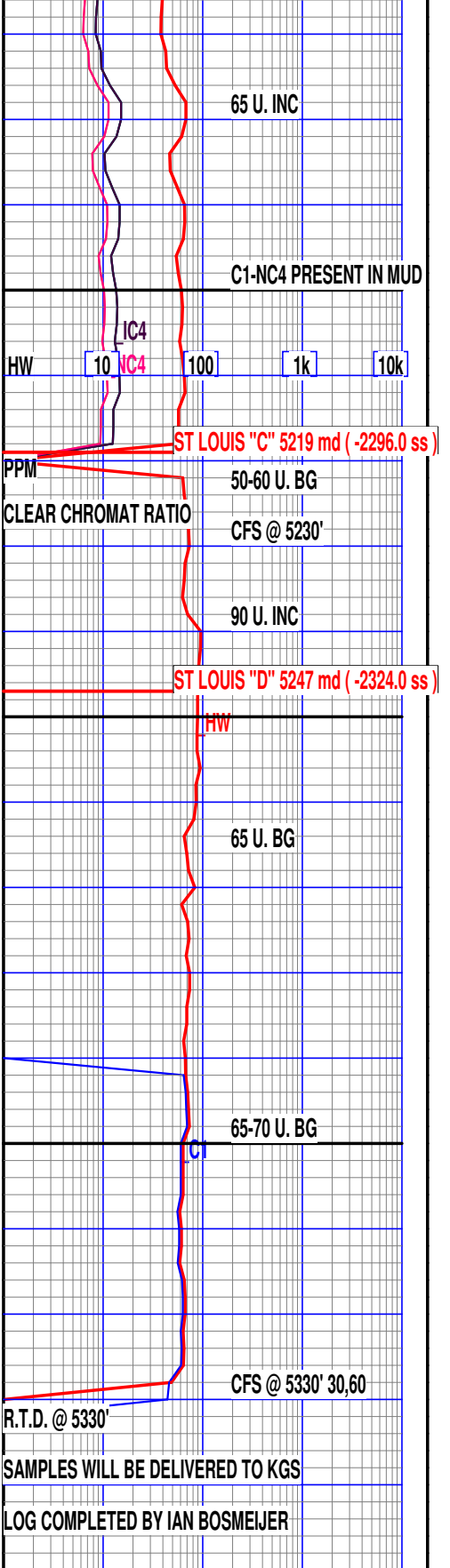
LS- CRM TO OFF WHT, HD DNS TO BRITT, TR SFT, F-XLN TO TR RE-XLN, SFT WHT CHLK, IMBD FOSS FRAG IP, TR IMBD OOL, TR WHT CHRT IN TRAY, SLI DOLO DLL YEL MIN FLO IN 30%, NO VIS POR, NO SHOW

WOB 40
RPM 60
PP 1300

WT 9.2
VIS 51
LCM 2#

R.T.D @ 5330' 4/25/14
L.T.D. @ 5326'

TOFL HALLIBURTON



R.T.D @ 5330'

SAMPLES WILL BE DELIVERED TO KGS

LOG COMPLETED BY IAN BOSMEIJER