



DRILL STEM TEST REPORT

Prepared For: **Ring Energy Inc.**

PO Box 11350
Midland Texas 79702

ATTN: Austin Gazneiz

Audrey 11 #1

11-27s-31w-Haskell

Start Date: 2014.04.07 @ 04:56:00

End Date: 2014.04.07 @ 15:26:30

Job Ticket #: 183133 DST #: 1

Superior Testers Enterprises LLC
PO Box 138 Great Bend KS 67530
1-800-792-6902

Printed: 2014.04.08 @ 03:38:53



DRILL STEM TEST REPORT

Ring Energy Inc.

11-27s-31w-Haskell

PO Box 11350
Midland Texas 79702

Audrey 11 #1

Job Ticket: 183133

DST#: 1

ATTN: Austin Gazneiz

Test Start: 2014.04.07 @ 04:56:00

GENERAL INFORMATION:

Formation: **Lansing KC-A**

Deviated: No Whipstock: ft (KB)

Time Tool Opened: 07:10:30

Time Test Ended: 15:26:30

Test Type: Conventional Bottom Hole (Initial)

Tester: Dustin Ellis

Unit No: 3315-Great Bend-141

Interval: 4540.00 ft (KB) To 4573.00 ft (KB) (TVD)

Reference Elevations: 2816.00 ft (KB)

Total Depth: 4573.00 ft (KB) (TVD)

2806.00 ft (CF)

Hole Diameter: 7.88 inches Hole Condition: Fair

KB to GR/CF: 10.00 ft

Serial #: 6838

Inside

Press@RunDepth: 45.56 psig @ 4573.00 ft (KB)

Capacity: 5000.00 psig

Start Date: 2014.04.07 End Date: 2014.04.07

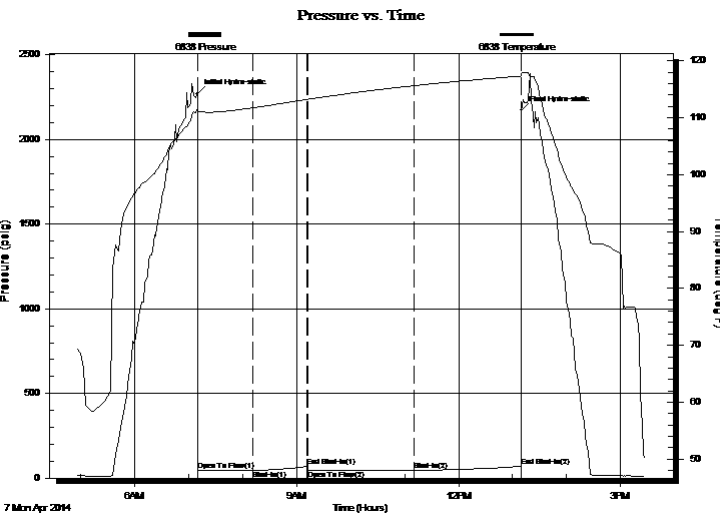
Last Calib.: 2014.04.08

Start Time: 04:56:00 End Time: 15:26:30

Time On Btm: 2014.04.07 @ 07:10:00

Time Off Btm: 2014.04.07 @ 13:10:00

TEST COMMENT: 1st Open 60 minutes Very weak surface blow died off after 26 minutes .
1st Shut in 60 minutes No blow back
2nd Open 120 minutes Dead
2nd Shut in 120 minutes No blow back



PRESSURE SUMMARY

Time (Min.)	Pressure (psig)	Temp (deg F)	Annotation
0	2269.31	111.68	Initial Hydro-static
1	44.14	111.33	Open To Flow (1)
62	45.10	111.75	Shut-In(1)
122	68.73	113.24	End Shut-In(1)
123	46.55	113.25	Open To Flow (2)
241	45.56	115.65	Shut-In(2)
360	69.54	117.34	End Shut-In(2)
360	2171.26	117.70	Final Hydro-static

Recovery

Length (ft)	Description	Volume (bbl)
5.00	Mud 100%	0.07

Gas Rates

Choke (inches)	Pressure (psig)	Gas Rate (Mcf/d)



DRILL STEM TEST REPORT

Ring Energy Inc.

11-27s-31w-Haskell

PO Box 11350
Midland Texas 79702

Audrey 11 #1

Job Ticket: 183133

DST#: 1

ATTN: Austin Gazneiz

Test Start: 2014.04.07 @ 04:56:00

GENERAL INFORMATION:

Formation: **Lansing KC-A**

Deviated: No Whipstock: ft (KB)

Time Tool Opened: 07:10:30

Time Test Ended: 15:26:30

Test Type: Conventional Bottom Hole (Initial)

Tester: Dustin Ellis

Unit No: 3315-Great Bend-141

Interval: 4540.00 ft (KB) To 4573.00 ft (KB) (TVD)

Reference Elevations: 2816.00 ft (KB)

Total Depth: 4573.00 ft (KB) (TVD)

2806.00 ft (CF)

Hole Diameter: 7.88 inches Hole Condition: Fair

KB to GR/CF: 10.00 ft

Serial #: 8931 Outside

Press@RunDepth: 75.35 psig @ 4573.00 ft (KB)

Capacity: 5000.00 psig

Start Date: 2014.04.07 End Date: 2014.04.07

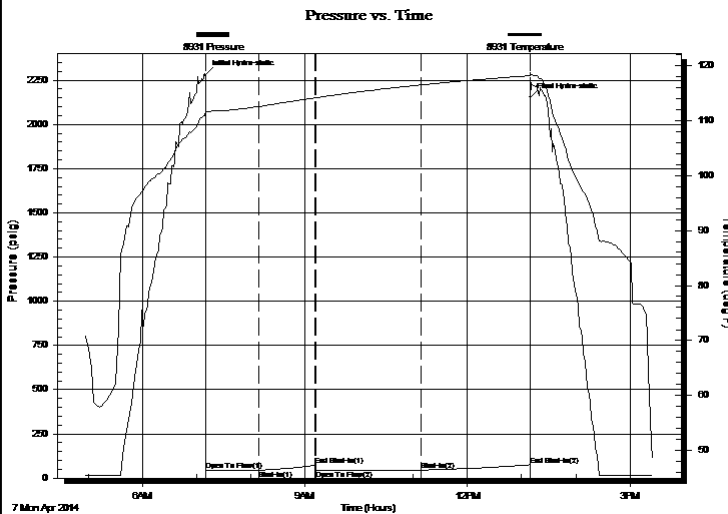
Last Calib.: 2014.04.08

Start Time: 04:56:00 End Time: 15:26:00

Time On Btm: 2014.04.07 @ 07:09:30

Time Off Btm: 2014.04.07 @ 13:09:30

TEST COMMENT: 1st Open 60 minutes Very weak surface blow died off after 26 minutes .
1st Shut in 60 minutes No blow back
2nd Open 120 minutes Dead
2nd Shut in 120 minutes No blow back



PRESSURE SUMMARY

Time (Min.)	Pressure (psig)	Temp (deg F)	Annotation
0	2280.28	111.84	Initial Hydro-static
1	44.05	111.40	Open To Flow (1)
60	45.78	112.52	Shut-In(1)
122	72.45	114.09	End Shut-In(1)
123	45.68	114.10	Open To Flow (2)
239	46.32	116.43	Shut-In(2)
360	75.35	118.11	End Shut-In(2)
360	2153.26	118.70	Final Hydro-static

Recovery

Length (ft)	Description	Volume (bbl)
5.00	Mud 100%	0.07

Gas Rates

	Choke (inches)	Pressure (psig)	Gas Rate (Mcf/d)



DRILL STEM TEST REPORT

TOOL DIAGRAM

Ring Energy Inc.

11-27s-31w-Haskell

PO Box 11350
Midland Texas 79702

Audrey 11 #1

Job Ticket: 183133

DST#: 1

ATTN: Austin Gazneiz

Test Start: 2014.04.07 @ 04:56:00

Tool Information

Drill Pipe:	Length: 4533.00 ft	Diameter: 3.80 inches	Volume: 63.59 bbl	Tool Weight: 2000.00 lb
Heavy Wt. Pipe:	Length: 0.00 ft	Diameter: 0.00 inches	Volume: 0.00 bbl	Weight set on Packer: 20000.00 lb
Drill Collar:	Length: 0.00 ft	Diameter: 0.00 inches	Volume: 0.00 bbl	Weight to Pull Loose: 83000.00 lb
			<u>Total Volume: 63.59 bbl</u>	Tool Chased 0.00 ft
Drill Pipe Above KB:	16.00 ft			String Weight: Initial 75000.00 lb
Depth to Top Packer:	4540.00 ft			Final 75000.00 lb
Depth to Bottom Packer:	ft			
Interval between Packers:	38.00 ft			
Tool Length:	61.00 ft			
Number of Packers:	2	Diameter: 6.75 inches		

Tool Comments: Ran 2 Shell Packers

Tool Description	Length (ft)	Serial No.	Position	Depth (ft)	Accum. Lengths
Shut In Tool	5.00			4522.00	
Hydraulic tool	5.00			4527.00	
Jars	6.00			4533.00	
Safety Joint	2.00			4535.00	
Packer	5.00			4540.00	23.00 Bottom Of Top Packer
packer	5.00			4545.00	
Perforations	28.00			4573.00	
Recorder	0.00	6838	Inside	4573.00	
Recorder	0.00	8931	Outside	4573.00	
Bull Plug	5.00			4578.00	38.00 Anchor Tool
Total Tool Length:	61.00				



DRILL STEM TEST REPORT

FLUID SUMMARY

Ring Energy Inc.

11-27s-31w-Haskell

PO Box 11350
Midland Texas 79702

Audrey 11 #1

Job Ticket: 183133

DST#: 1

ATTN: Austin Gazneiz

Test Start: 2014.04.07 @ 04:56:00

Mud and Cushion Information

Mud Type: Gel Chem

Cushion Type:

Oil API:

deg API

Mud Weight: 9.00 lb/gal

Cushion Length:

ft

Water Salinity:

ppm

Viscosity: 58.00 sec/qt

Cushion Volume:

bbbl

Water Loss: 8.00 in³

Gas Cushion Type:

Resistivity: ohm.m

Gas Cushion Pressure:

psig

Salinity: 3500.00 ppm

Filter Cake: 1.00 inches

Recovery Information

Recovery Table

Length ft	Description	Volume bbbl
5.00	Mud 100%	0.070

Total Length: 5.00 ft Total Volume: 0.070 bbl

Num Fluid Samples: 0

Num Gas Bombs: 0

Serial #:

Laboratory Name:

Laboratory Location:

Recovery Comments: Ran 2 Shell Packers

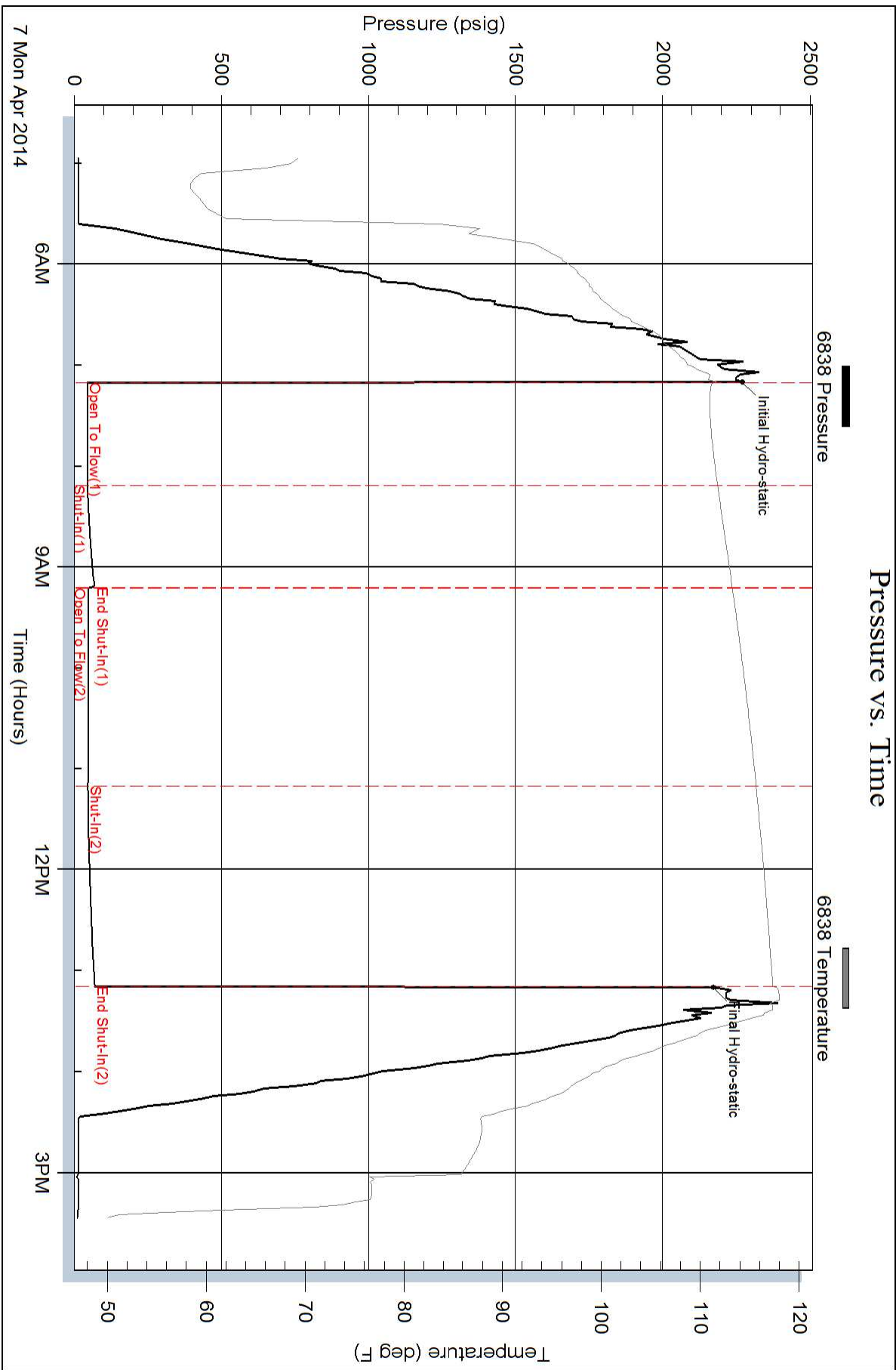
Serial #: 6838

Inside

Ring Energy Inc.

Audrey 11 #1

DST Test Number: 1



Pressure vs. Time

