

DRILL STEM TEST REPORT

Prepared For: **Ring Energy Inc.**

PO Box 11350
Midland Texas 79702

ATTN: Austin Garner

Audrey 11 #1

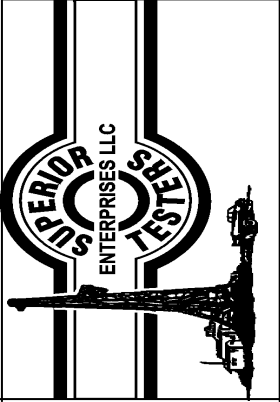
11-27s-31w-Haskell

Start Date: 2014.04.10 @ 12:47:00

End Date: 2014.04.10 @ 23:25:00

Job Ticket #: 18314 DST #: 2

Superior Testers Enterprises LLC
PO Box 138 Great Bend KS 67530
1-800-792-6902



DRILL STEM TEST REPORT

Ring Energy Inc.
 PO Box 11350
 Midland Texas 79702
 ATTN: Austin Garner

11-27s-31w-Haskell
Audrey 11 #1
 Job Ticket: 18314 **DST#: 2**
 Test Start: 2014.04.10 @ 12:47:00

GENERAL INFORMATION:

Formation: **Morrow sand**
 Deviated: No Whipstock: ft (KB)
 Time Tool Opened: 15:32:00
 Time Test Ended: 23:25:00
Interval: 4990.00 ft (KB) To 5055.00 ft (KB) (TVD)
 Total Depth: 5055.00 ft (KB) (TVD)
 Hole Diameter: 7.88 inches Hole Condition: Fair

Test Type: Conventional Bottom Hole (Initial)
 Tester: Dustin Ellis
 Unit No: 3315-Great Bend-141
 Reference Elevations: 2816.00 ft (KB)
 2806.00 ft (CF)
 10.00 ft
 KB to GR/CF:

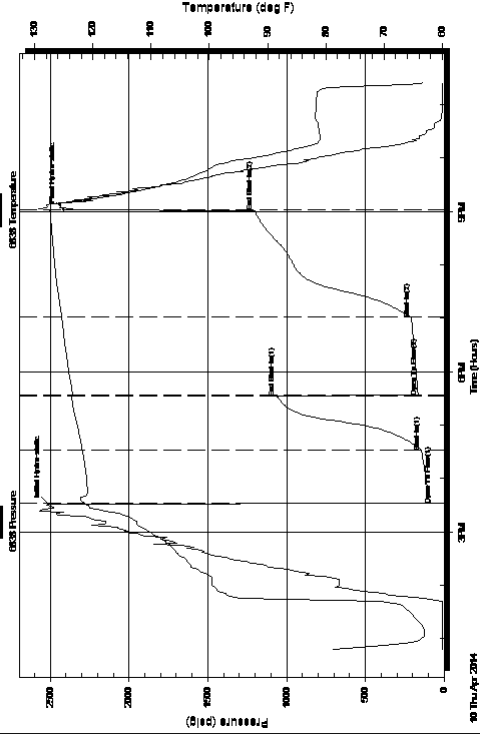
Serial #: 6838 Inside

Press@RunDepth: 208.13 psig @ 5050.85 ft (KB)
 Start Date: 2014.04.10 End Date:
 Start Time: 12:47:00 End Time:

Capacity: 5000.00 psig
 Last Calib.: 2014.04.10
 Time On Btm: 2014.04.10 @ 15:31:00
 Time Off Btm: 2014.04.10 @ 21:02:00

TEST COMMENT: 1st Open 60 minutes Good building blow built to the bottom of a 5 gallon bucket of water in 5 minutes.
 1st Shut in 60 minutes No blow back
 2nd Open 90 minutes Strong building blow blew off bottom bucket in 3 minutes.
 2nd Shut in 120 minutes Yes blow back

Pressure vs. Time



PRESSURE SUMMARY

Time (Min.)	Pressure (psig)	Temp (deg F)	Annotation
0	2512.07	121.63	Initial Hydro-static
1	76.61	121.33	Open To Flow (1)
61	143.53	121.79	Shut-In(1)
122	1064.67	123.71	End Shut-In(1)
123	164.19	123.52	Open To Flow (2)
210	208.13	125.36	Shut-In(2)
331	1205.26	127.36	End Shut-In(2)
331	2411.99	127.60	Final Hydro-static

Recovery

Length (ft)	Description	Volume (bbl)
122.00	Oil cut mud 30% Oil 70% Mud	1.71
332.00	Gassy oil cut mud	4.66
0.00	Oil 60% Gas 30% Mud 10%	0.00

Gas Rates

Choke (inches)	Pressure (psig)	Gas Rate (Mcf/d)



DRILL STEM TEST REPORT

Ring Energy Inc.
 PO Box 11350
 Midland Texas 79702
 ATTN: Austin Garner

11-27s-31w-Haskell
Audrey 11 #1
 Job Ticket: 18314 **DST#: 2**
 Test Start: 2014.04.10 @ 12:47:00

GENERAL INFORMATION:

Formation: **Morrow sand**
 Deviated: No Whipstock: ft (KB)
 Time Tool Opened: 15:32:00
 Time Test Ended: 23:25:00
Interval: 4990.00 ft (KB) To 5055.00 ft (KB) (TVD)
 Total Depth: 5055.00 ft (KB) (TVD)
 Hole Diameter: 7.88 inches Hole Condition: Fair

Test Type: Conventional Bottom Hole (Initial)
 Tester: Dustin Ellis
 Unit No: 3315-Great Bend-141
 Reference Elevations: 2816.00 ft (KB)
 2806.00 ft (CF)
 10.00 ft
 KB to GR/CF:

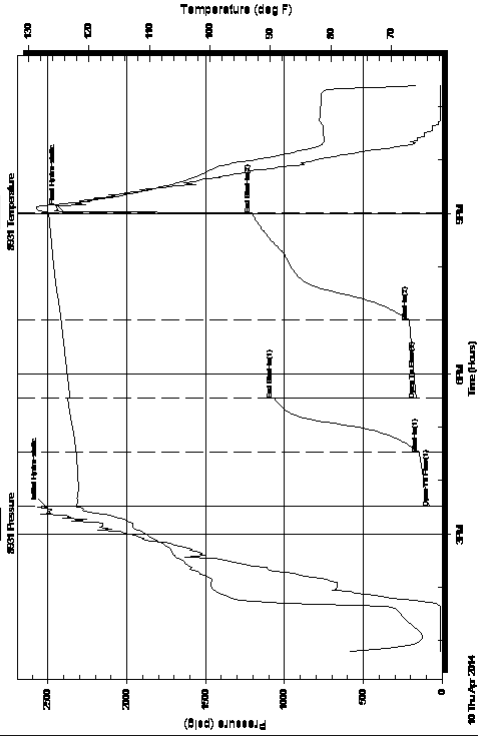
Serial #: 8931 Outside

Press@RunDepth: 1206.29 psig @ 5050.85 ft (KB)
 Start Date: 2014.04.10 End Date:
 Start Time: 12:47:00 End Time:

Capacity: 5000.00 psig
 Last Calib.: 2014.04.10
 Time On Btm: 2014.04.10 @ 15:30:30
 Time Off Btm: 2014.04.10 @ 21:01:30

TEST COMMENT: 1st Open 60 minutes Good building blow built to the bottom of a 5 gallon bucket of water in 5 minutes.
 1st Shut in 60 minutes No blow back
 2nd Open 90 minutes Strong building blow blew off bottom bucket in 3 minutes.
 2nd Shut in 120 minutes Yes blow back

Pressure vs. Time



PRESSURE SUMMARY

Time (Min.)	Pressure (psig)	Temp (deg F)	Annotation
0	2512.96	122.69	Initial Hydro-static
1	75.27	122.12	Open To Flow (1)
62	145.62	122.12	Shut-In(1)
122	1065.36	123.49	End Shut-In(1)
123	166.23	123.25	Open To Flow (2)
210	209.01	124.60	Shut-In(2)
331	1206.29	126.65	End Shut-In(2)
331	2400.64	127.10	Final Hydro-static

Recovery

Length (ft)	Description	Volume (bbl)
122.00	Oil cut mud 30%Oil 70%Mud	1.71
332.00	Gassy oil cut mud	4.66
0.00	Oil 60% Gas30% Mud10%	0.00

Gas Rates

Choke (inches)	Pressure (psig)	Gas Rate (Mcf/d)



DRILL STEM TEST REPORT

TOOL DIAGRAM

Ring Energy Inc.
 PO Box 11350
 Midland Texas 79702
 ATTN: Austin Garner

11-27s-31w-Haskell
Audrey 11 #1
 Job Ticket: 18314
 DST#: 2
 Test Start: 2014.04.10 @ 12:47:00

Tool Information

Drill Pipe: Length: 4972.00 ft Diameter: 3.80 inches Volume: 69.74 bbl Tool Weight: 2000.00 lb
 Heavy Wt. Pipe: Length: 0.00 ft Diameter: 0.00 inches Volume: 0.00 bbl Weight set on Packer: 20000.00 lb
 Drill Collar: Length: 0.00 ft Diameter: 0.00 inches Volume: 0.00 bbl Weight to Pull Loose: 110000.0 lb
 Total Volume: 69.74 bbl Tool Chased 0.00 ft
 Drill Pipe Above KB: 10.00 ft String Weight: Initial 80000.00 lb
 Depth to Top Packer: 4990.00 ft Final 82000.00 lb
 Depth to Bottom Packer: ft
 Interval between Packers: 65.85 ft
 Tool Length: 93.85 ft
 Number of Packers: 2 Diameter: 6.75 inches
 Tool Comments:

Tool Description

Tool Description	Length (ft)	Serial No.	Position	Depth (ft)	Accum. Lengths
Shut In Tool	5.00			4967.00	
Hydraulic tool	5.00			4972.00	
Jars	6.00			4978.00	
Safety Joint	2.00			4980.00	
Top Packer	5.00			4985.00	
Packer	5.00			4990.00	28.00
Anchor	5.00			4995.00	
Change Over Sub	0.75			4995.75	
Drill Pipe	31.35			5027.10	
Change Over Sub	0.75			5027.85	
Anchor	23.00			5050.85	
Recorder	0.00	6838	Inside	5050.85	
Recorder	0.00	8931	Outside	5050.85	
Bull Plug	5.00			5055.85	65.85

Total Tool Length: 93.85

Anchor Tool



DRILL STEM TEST REPORT

FLUID SUMMARY

Ring Energy Inc.

11-27s-31w-Haskell

PO Box 11350
Midland Texas 79702

Audrey 11 #1

Job Ticket: 18314

DST#: 2

ATTN: Austin Garner

Test Start: 2014.04.10 @ 12:47:00

Mud and Cushion Information

Mud Type: Gel Chem
 Mud Weight: 9.00 lb/gal
 Viscosity: 54.00 sec/qt
 Water Loss: 8.80 in³
 Resistivity: ohm.m
 Salinity: 2800.00 ppm
 Filter Cake: 1.00 inches

Cushion Type: deg API
 Cushion Length: ft
 Cushion Volume: bbl
 Gas Cushion Type: psig
 Gas Cushion Pressure:

Recovery Information

Recovery Table

Length ft	Description	Volume bbl
122.00	Oil cut mud 30%Oil 70%Mud	1.711
332.00	Gassy oil cut mud	4.657
0.00	Oil 60% Gas30% Mud10%	0.000

Total Length: 454.00 ft Total Volume: 6.368 bbl

Num Fluid Samples: 0 Num Gas Bombs: 0 Serial #:
 Laboratory Name: Laboratory Location:
 Recovery Comments:

