



## DRILL STEM TEST REPORT

Prepared For: **L.B EXPLORATION INC**

2135 2 ND RD  
HOLYROOD KS 67450

ATTN: JIM MUSGROVE

**25-18S-15W BARTON**

**SCHNEIDER#1**

Start Date: 2010.07.06 @ 18:00:00

End Date: 2010.07.06 @ 22:14:30

Job Ticket #: 1107                      DST #: 4

Eagle Testers LLC.

P.O.Box 1011, Great Bend, KS 67530

620-617-7548

Printed: 2010.07.06 @ 18:23:20

L.B EXPLORATION INC  
SCHNEIDER#1  
25-18S-15W BARTON  
DST # 4  
ARBUCKLE  
2010.07.06



# DRILL STEM TEST REPORT

L.B EXPLORATION INC

**SCHNEIDER#1**

2135 2 ND RD  
HOLYROOD KS 67450

**25-18S-15W BARTON**

ATTN: JIM MUSGROVE

Job Ticket: 1107

**DST#: 4**

Test Start: 2010.07.06 @ 18:00:00

## GENERAL INFORMATION:

Formation: **ARBUCKLE**

Deviated: No Whipstock: ft (KB)

Time Tool Opened: 20:00:30

Time Test Ended: 22:14:30

Test Type: Conventional Bottom Hole (Initial)

Tester: DAVID NICHOLS

Unit No: 15 22 M GB

**Interval: 3512.00 ft (KB) To 3522.00 ft (KB) (TVD)**

Reference Elevations: 1904.00 ft (KB)

Total Depth: 3522.00 ft (KB) (TVD)

1896.00 ft (CF)

Hole Diameter: 7.88 inches Hole Condition: Fair

KB to GR/CF: 8.00 ft

**Serial #: 6666**

**Inside**

Press @ Run Depth: 43.35 psig @ 3518.00 ft (KB)

Capacity: 5000.00 psig

Start Date: 2010.07.06

End Date:

2010.07.06

Last Calib.:

2010.07.06

Start Time: 18:00:00

End Time:

22:14:30

Time On Btm:

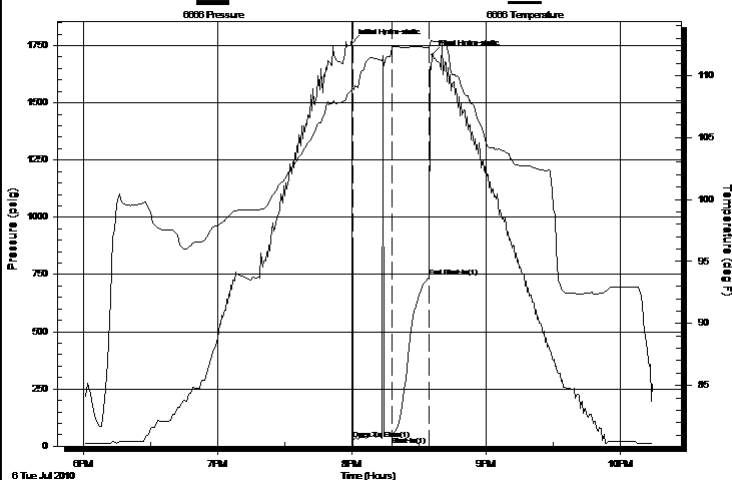
2010.07.06 @ 20:00:00

Time Off Btm:

2010.07.06 @ 20:36:00

**TEST COMMENT:** 15-INITIAL OPENING SURFACE BLOW FLUSHED TOOL SURFACE BLOW  
15-INITIAL SHUT IN NO BLOW BACK

Pressure vs. Time



## PRESSURE SUMMARY

Time (Min.)	Pressure (psig)	Temp (deg F)	Annotation
0	1761.20	108.79	Initial Hydro-static
1	29.98	108.91	Open To Flow (1)
18	43.35	112.22	Shut-In(1)
35	739.46	112.28	End Shut-In(1)
36	1709.30	112.78	Final Hydro-static

## Recovery

Length (ft)	Description	Volume (bbl)
45.00	OIL CUT MUD 15%O85%M	0.22

## Gas Rates

Choke (inches)	Pressure (psig)	Gas Rate (Mcf/d)



# DRILL STEM TEST REPORT

L.B EXPLORATION INC

SCHNEIDER#1

2135 2 ND RD  
HOLYROOD KS 67450

25-18S-15W BARTON

ATTN: JIM MUSGROVE

Job Ticket: 1107

DST#: 4

Test Start: 2010.07.06 @ 18:00:00

## GENERAL INFORMATION:

Formation: **ARBUCKLE**

Deviated: No Whipstock: ft (KB)

Time Tool Opened: 20:00:30

Time Test Ended: 22:14:30

Test Type: Conventional Bottom Hole (Initial)

Tester: DAVID NICHOLS

Unit No: 15 22 M GB

Interval: **3512.00 ft (KB) To 3522.00 ft (KB) (TVD)**

Reference Elevations: 1904.00 ft (KB)

Total Depth: 3522.00 ft (KB) (TVD)

1896.00 ft (CF)

Hole Diameter: 7.88 inches Hole Condition: Fair

KB to GR/CF: 8.00 ft

Serial #: **6651** Outside

Press @ Run Depth: 738.91 psig @ 3519.00 ft (KB)

Capacity: 5000.00 psig

Start Date: 2010.07.06

End Date:

2010.07.06

Last Calib.:

2010.07.06

Start Time: 18:00:00

End Time:

22:23:30

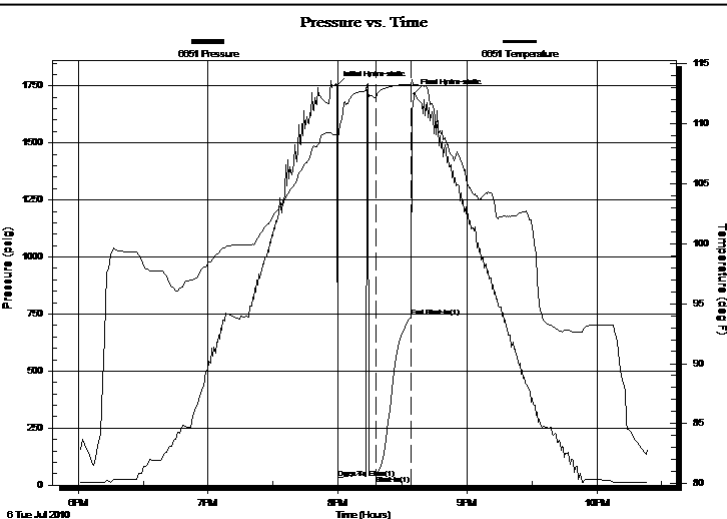
Time On Btm:

2010.07.06 @ 19:59:30

Time Off Btm:

2010.07.06 @ 20:35:30

TEST COMMENT: 15-INITIAL OPENING SURFACE BLOW FLUSHED TOOL SURFACE BLOW  
15-INITIAL SHUT IN NO BLOW BACK



## PRESSURE SUMMARY

Time (Min.)	Pressure (psig)	Temp (deg F)	Annotation
0	1751.90	109.05	Initial Hydro-static
1	31.08	108.69	Open To Flow (1)
18	45.01	112.20	Shut-In(1)
35	738.91	113.29	End Shut-In(1)
36	1714.38	113.25	Final Hydro-static

## Recovery

Length (ft)	Description	Volume (bbl)
45.00	OIL CUT MUD 15%O85%M	0.22

## Gas Rates

Choke (inches)	Pressure (psig)	Gas Rate (Mcf/d)



# DRILL STEM TEST REPORT

**TOOL DIAGRAM**

L.B EXPLORATION INC

**SCHNEIDER#1**

2135 2 ND RD  
HOLYROOD KS 67450

**25-18S-15W BARTON**

ATTN: JIM MUSGROVE

Job Ticket: 1107

**DST#: 4**

Test Start: 2010.07.06 @ 18:00:00

## Tool Information

Drill Pipe:	Length: 2957.00 ft	Diameter: 3.88 inches	Volume: 43.24 bbl	Tool Weight: 2000.00 lb
Heavy Wt. Pipe:	Length: 0.00 ft	Diameter: 0.00 inches	Volume: 0.00 bbl	Weight set on Packer: 20000.00 lb
Drill Collar:	Length: 540.00 ft	Diameter: 2.25 inches	Volume: 2.66 bbl	Weight to Pull Loose: 77000.00 lb
			<u>Total Volume: 45.90 bbl</u>	Tool Chased 0.00 ft
Drill Pipe Above KB:	0.00 ft			String Weight: Initial 68000.00 lb
Depth to Top Packer:	3512.00 ft			Final 68000.00 lb
Depth to Bottom Packer:	ft			
Interval between Packers:	10.00 ft			
Tool Length:	25.00 ft			
Number of Packers:	2	Diameter: 6.75 inches		

Tool Comments:

Tool Description	Length (ft)	Serial No.	Position	Depth (ft)	Accum. Lengths
SHUT IN TOOL	5.00			3502.00	
HYD S.I. Tool	5.00			3507.00	
TRAVEL COLER	2.00			3509.00	
Packer	3.00			3512.00	15.00 Bottom Of Top Packer
travel collar	0.00			3512.00	10.00 Tool Interval
Packer	0.00			3512.00	
Anchor	5.00			3517.00	
Recorder	1.00	6666	Inside	3518.00	
Recorder	1.00	6651	Outside	3519.00	
BULL PLUG	3.00			3522.00	1000024.00 Bottom Packers & Anchor
<b>Total Tool Length:</b>	<b>25.00</b>				



# DRILL STEM TEST REPORT

FLUID SUMMARY

L.B EXPLORATION INC

SCHNEIDER#1

2135 2 ND RD  
HOLYROOD KS 67450

25-18S-15W BARTON

Job Ticket: 1107

DST#: 4

ATTN: JIM MUSGROVE

Test Start: 2010.07.06 @ 18:00:00

## Mud and Cushion Information

Mud Type: Gel Chem

Cushion Type:

Oil API:

deg API

Mud Weight: 9.00 lb/gal

Cushion Length: ft

Water Salinity: ppm

Viscosity: 52.00 sec/qt

Cushion Volume: bbl

Water Loss: 8.00 in<sup>3</sup>

Gas Cushion Type:

Resistivity: ohm.m

Gas Cushion Pressure: psig

Salinity: 5000.00 ppm

Filter Cake: inches

## Recovery Information

Recovery Table

Length ft	Description	Volume bbl
45.00	OIL CUT MUD 15%O85%M	0.221

Total Length: 45.00 ft      Total Volume: 0.221 bbl

Num Fluid Samples: 0

Num Gas Bombs: 0

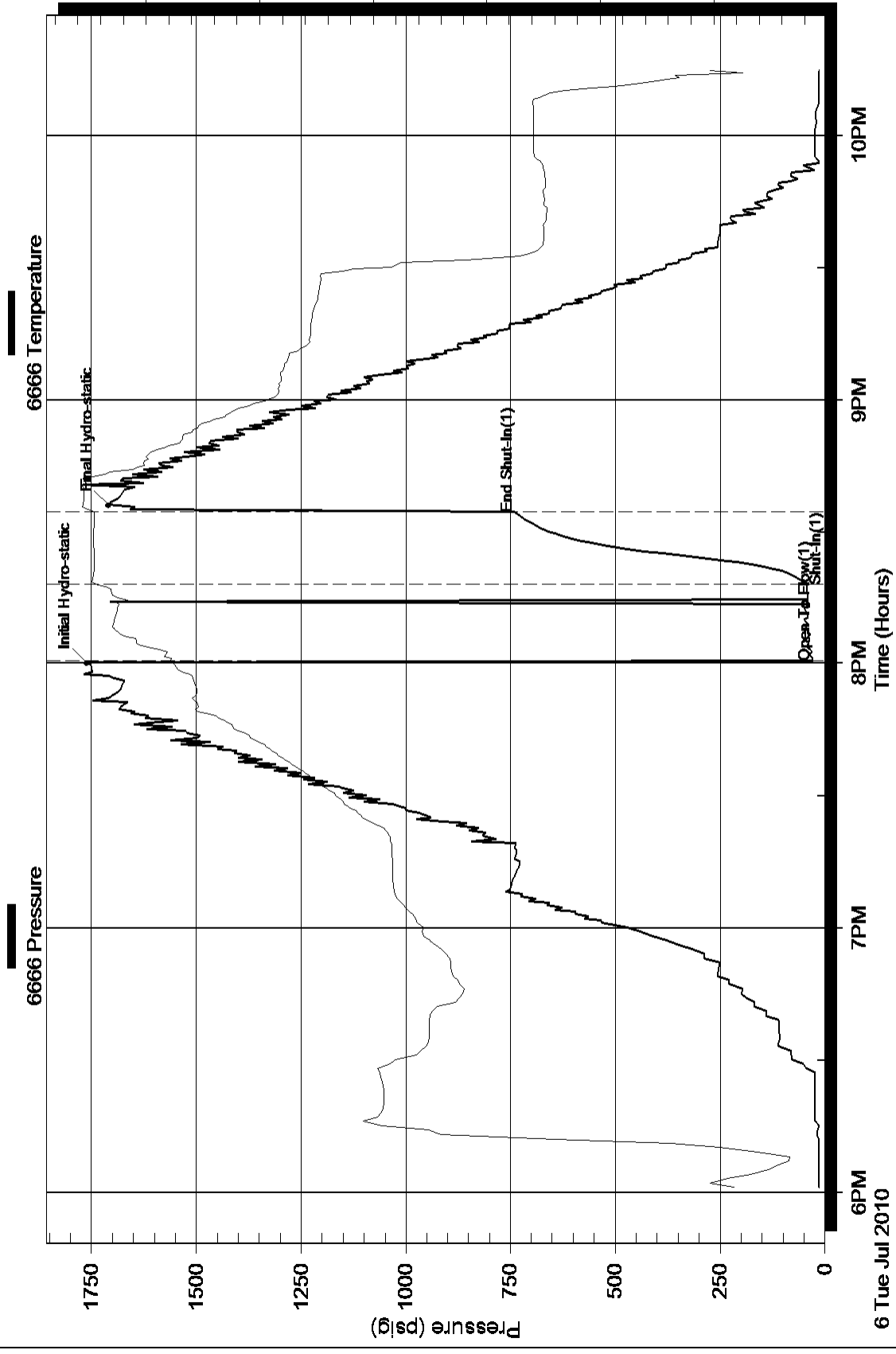
Serial #:

Laboratory Name:

Laboratory Location:

Recovery Comments:

# Pressure vs. Time



### Pressure vs. Time

