



Musgrove

Geologist's Report

Company: Blueridge Petroleum Corporation
Lease: Tally #1-12
Field: Pollnow Southeast
Location: NW-NE-NW-NW (154 FNL & 850 FWL)
Sec: 12 **Twsp:** 3S **Rge:** 29W
County: Decatur **State:** Kansas
GL: 2558 **KB:** 2567

Contractor: Southwind Drilling Rig #8
Spud: 6/21/14 **Comp:** 6/27/14
RTD: 3830' **LTD:** 3829'
Mud Up: 3200' **Type Mud:** Chemical/Displaced

Samples Saved From: 3200' to RTD
Drilling Time Kept From: 3200' to RTD
Samples Examined From: 3300' to RTD
Geological Supervision From: 3300' to RTD
Geologist on Well: Clint Musgrove





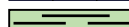


Surface Casing: 8 5/8" @ 221'
Production: 5 1/2 @ 3829'

Logs: By: Nabors: CNL/CDL, DIL, MEL, SONIC

Well Comparison Sheet

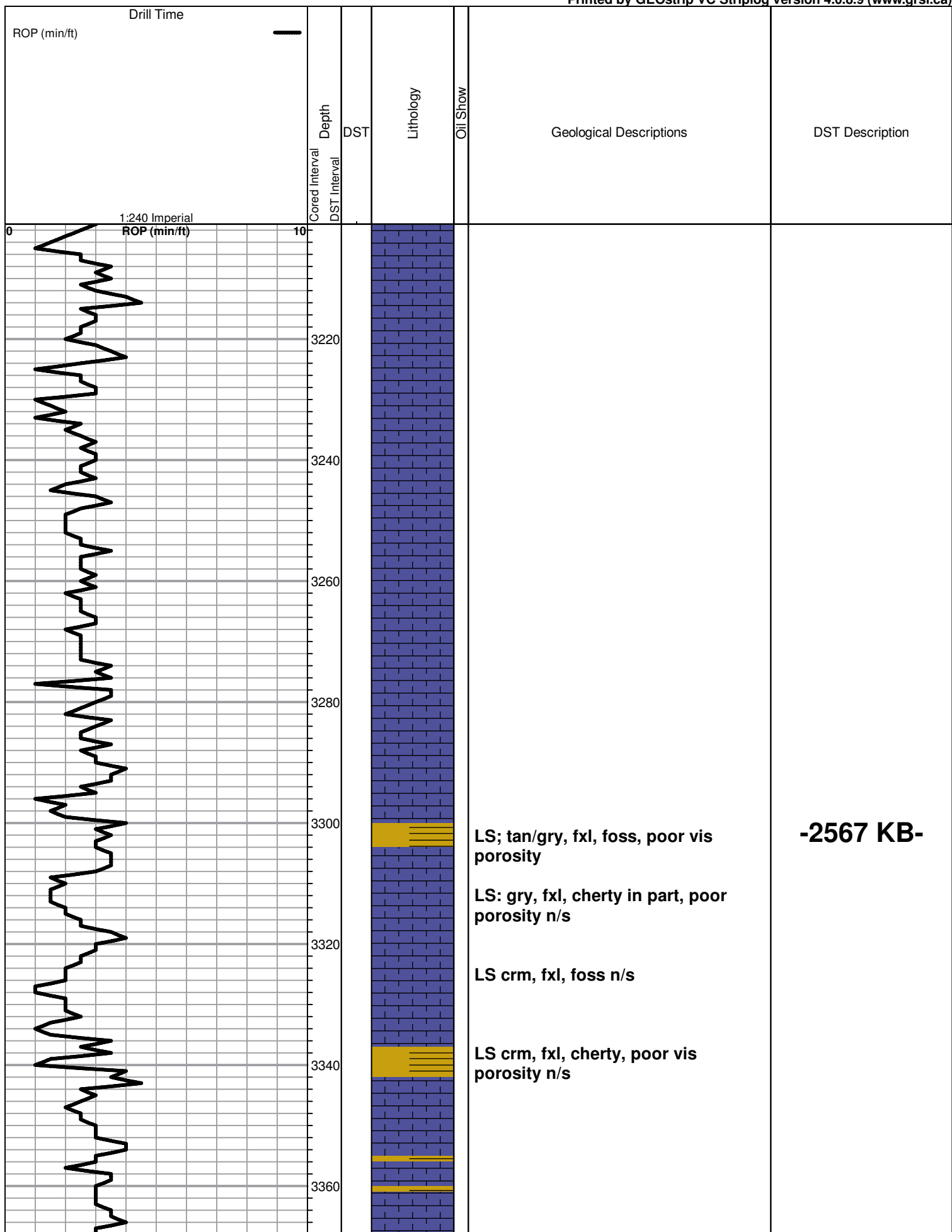
Formation	Tally #1-12		Thompson Smith #4-14			Smith #2-11		
	Sample Top	SS	Sample Top	SS	+/-	Sample Top	SS	+/-
Heebner	3438	-971	3545	-973	-2	3524	-964	+7
Toronto	3569	-1002	3580	-1008	-6	3552	-992	+10
Lansing	3579	-1012	3590	-1018	-6	3564	-1004	+8
Stark	3734	-1167	3738	-1166	+1	3756	-1158	+9
BKC	3774	-1207	3784	-1212	-5	3803	-1205	+2
RTD	3830	-1263	3850	-1278	-15	3860	-1262	+1

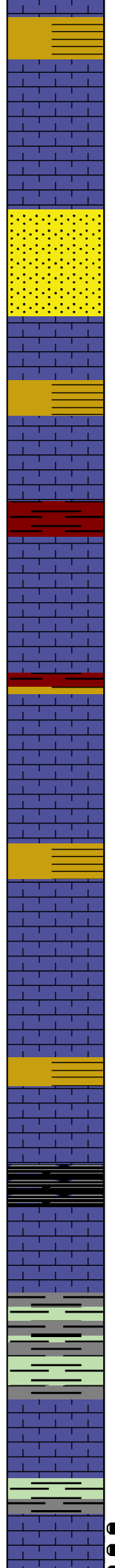
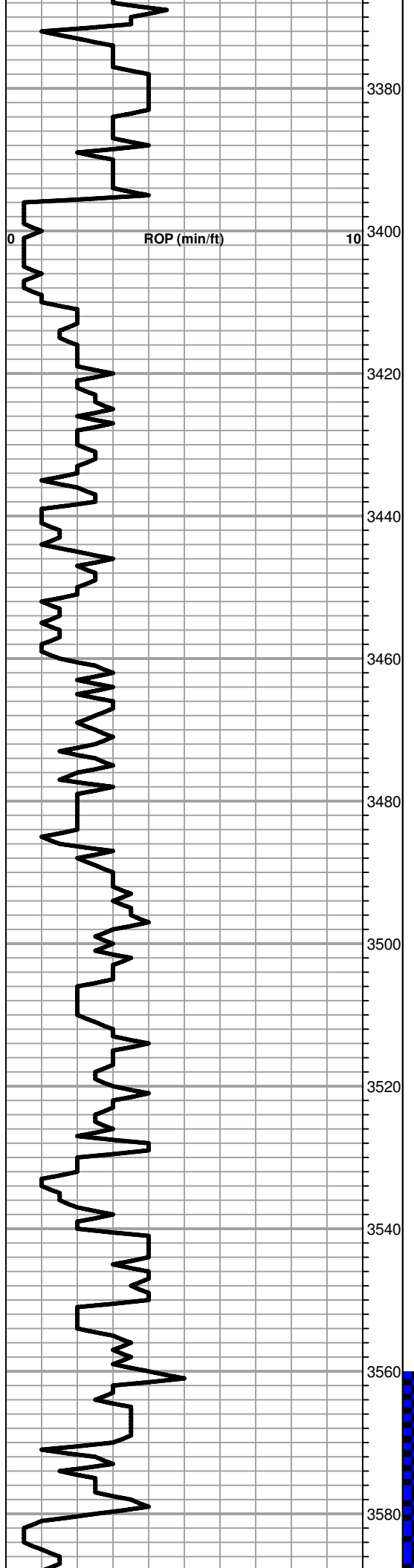
ROCK TYPES

	Lmst fw<7		shale, gry		shale, red		Ss
	shale, grn		Carbon Sh		Shcol		

OTHER SYMBOLS

DST
 DST Int
 DST alt





LS; crm, tan, foss, dense, n/s

LS; crm/tan, cherty, chalky, n/s

Sand, wh, f grain, well sorted poor porosity, n/s

LS; wh/crm, fxl, dense n/s

LS; wh, crm, ool in part, n/s no odor

Red sh

LS; wh, fxl, foss in part, poor vis porosity

AA

LS; wh/gry, fxl, foss, cherty, n/s

LS; crm, fxl, cherty, poor vis porosity, nsfo

LS; crm, foss, cherty, tr opaque chert, poor vis porosity, nsfo

Heebner 3538.0 (-971.0) 0.0

Black carb sh

Sh. gry/red soft

Toronto 3569.0 (-1002.0) 0.0

LS; crm, fxl, foss, scatt porosity, n/s

Lansing 3579.0 (-1012.0) 0.0

LS; crm, fxl, ool, good oom porosity, sfo when broken, no odor

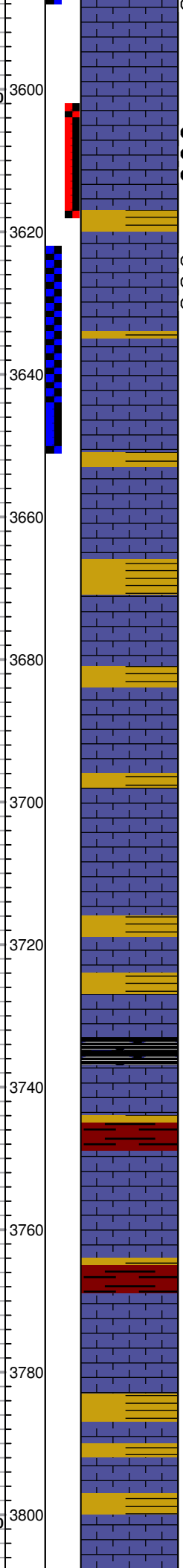
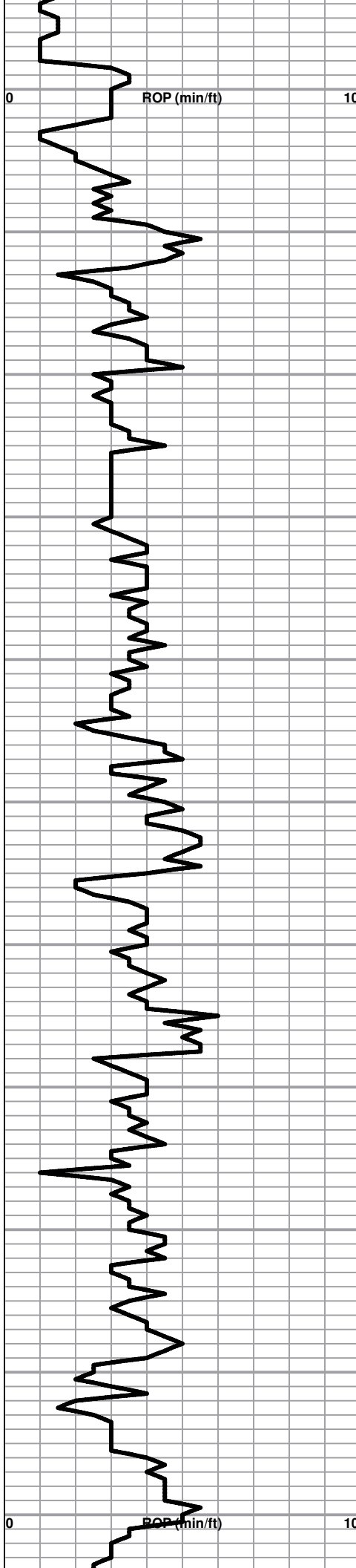
DST #1 3560-3587
 30-45-45-60
 Blow: BOB 19.5 min
 2nd Opening: BOB 22 mins

Recovery:
 13' GIP
 50' SLOW+HM (2%O, 81%W, 17%M)
 315' MCW (90%W, 10%M)

Pressures:
 ISIP: 1267 psi
 FSIP: 1272 psi
 IFP: 11-80 psi
 FFP: 85-175 psi
 HSH: 1656-1644 psi

DST #2 3602-3617
 30-45-45-60
 Blow: BOB 9 mins
 2nd Opening: BOB 13 mins

Recovery:



porosity, sfo when broken, no odor

● LS; crm, fxl, ool, scatt porosity, nsfo

● LS: wh.gry, fxl, vuggy porosity, ft stn. good sfo when broken, very ft odor

● LS; wh/crm, fxl, scatt vug porosity, good ft blk stn, sfo, no odor

● LS; crm/wh, fxl, foss in part, ft blk stn, scatt porosity, ft sfo, no odor

● LS; crm, fxl, cherty, dense, n/s, no odor

● LS; crm, fxl, chalky, ft blk stn, nsfo

VC sh

● LS: crm, fxl, cherty, dense, lots of opaque chert

● LS; crm, fxl, ppt porosity, n/s, no odor

● LS; crm, fxl, cherty, dense, n/s

● LS; crm, fxl, abundant chert

Tr. gry sh soft

● LS; crm, fxl, cherty, scatt porosity n/s

Stark 3734.0 (-1167.0) 0.0

● LS; crm, fxl, cherty, poor vis porosity, n/s

Sh, red/gry soft

● LS: crm, dense, poor scatt porosity, no stain, nsfo, tr red sh

Sh, red, brn soft

BKC 3774.0 (-1207.0) 0.0

● LS: wh/crm, fxl, poor vis porosity, n/s,

Sh; gry/red soft

VC sh

aa

494' GIP

131' Clean Oil

5' GOMW & HW (10% G, 10% O, 40% W, 40%M)

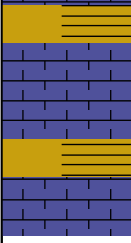
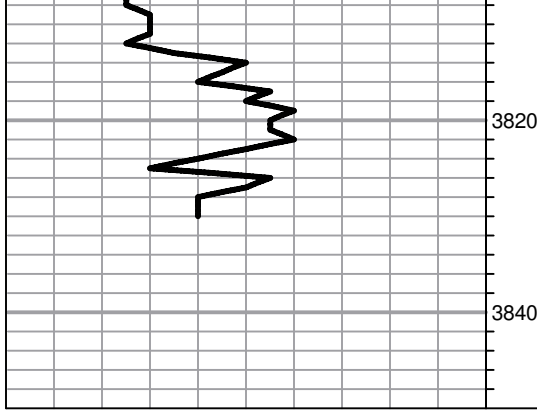
252' SLO & HW (2% O, 98% W)

Pressures:
 ISIP: 1183 psi
 FSIP: 1177 psi
 IFP: 17-91 psi
 FFP: 90-180 psi
 HSH: 1694-1651 psi

DST #3 3622-3650
30-30-30-45
 Blow: weak built to weak surface blow
 2nd Opening: no blow

Recovery:
 1' SLHM (2%O, 98% M)

Pressures:
 ISIP: 16 psi
 FSIP: 15 psi
 IFP: 9-10 psi
 FFP: 8-10 psi
 HSH: 1675-1688 psi



LS: wh, gry, poor vis porosity,
chalky in part

VC Sh

RTD 3830.0 (-1263.0) 0.0