



Pioneer Energy Services

Sonic Cement
Bond Log

Company Future Acquisition
Well Tito SWD
Field North Maddix
County Cowley
State Kansas

Location

Other Services

Sec: 21 Twp: 33S Rge: 5E

Elevation

Permanent Datum Ground Level Elevation 1251
Log Measured From Kelly Bushing 10 Ft. Above Perm. Datum
Drilling Measured From Kelly Bushing

K.B. 1261
D.F. 1251
G.L. 1251

Run Number	One	
Date Survey	06/19/2014	
Date Cementing	06/14/2014	
Type Cementing Operation	Primary	
Depth Driller	2148	
Depth Logger	2101	
Logged Interval	2100 to 0	to
Casing Driller	5.5 @ TD	@
Float Collar -- D.V. Tool	////	////
Squeeze Depth	////	
Amount & Type Cement	////	
Amount & Type Admix	////	
Type Fluid In Hole	Water	
Fluid Level	Full	
Salinity PPM CL	////	
Weight lb/gal -- Vis.	////	////
Approx. Logged Cement Top	1220	
Calculated Cement Top	////	
Max. Hole Temperature	98	
Tool No.	DBT-1	
Spacing Recorded	3-5'	
Equipment -- Location	65 D.Walker Pratt	
Recorded By	D.Walker	
Witnessed By	Terry Madden	

<<< Fold Here >>>

All interpretations are opinions based on inferences from electrical or other measurements and we cannot and do not guarantee the accuracy or correctness of any interpretation, and we shall not, except in the case of gross or willful negligence on our part, be liable or responsible for any loss, costs, damages, or expenses incurred or sustained by anyone resulting from any interpretation made by any of our officers, agents or employees. These interpretations are also subject to our general terms and conditions set out in our current Price Schedule.

Comments

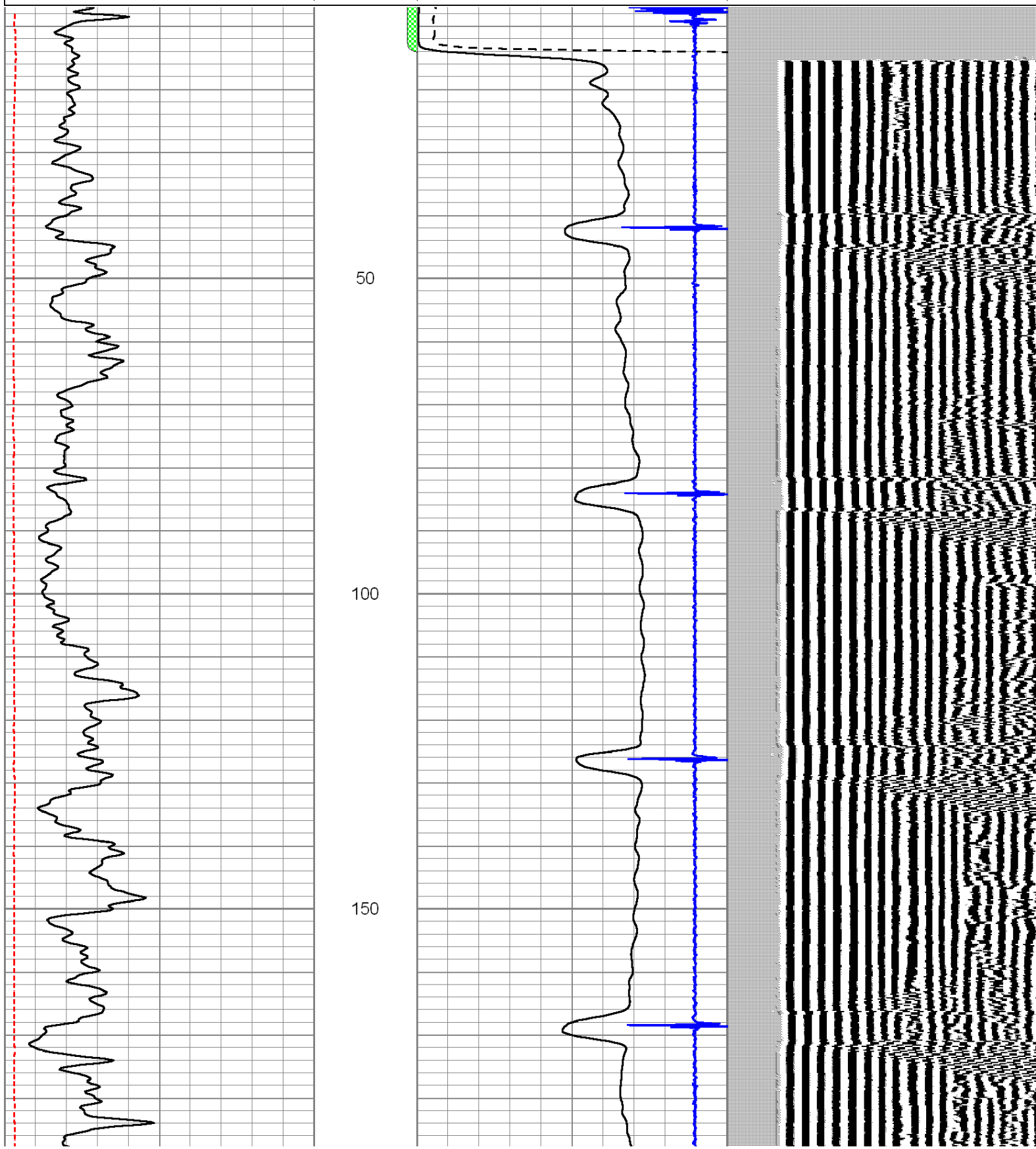
Thank you for using Pioneer Energy Services
(620) 672-8300
Windfield Kansas
East To County Rd. 1
South to 212th Rd
1/8 West South Into

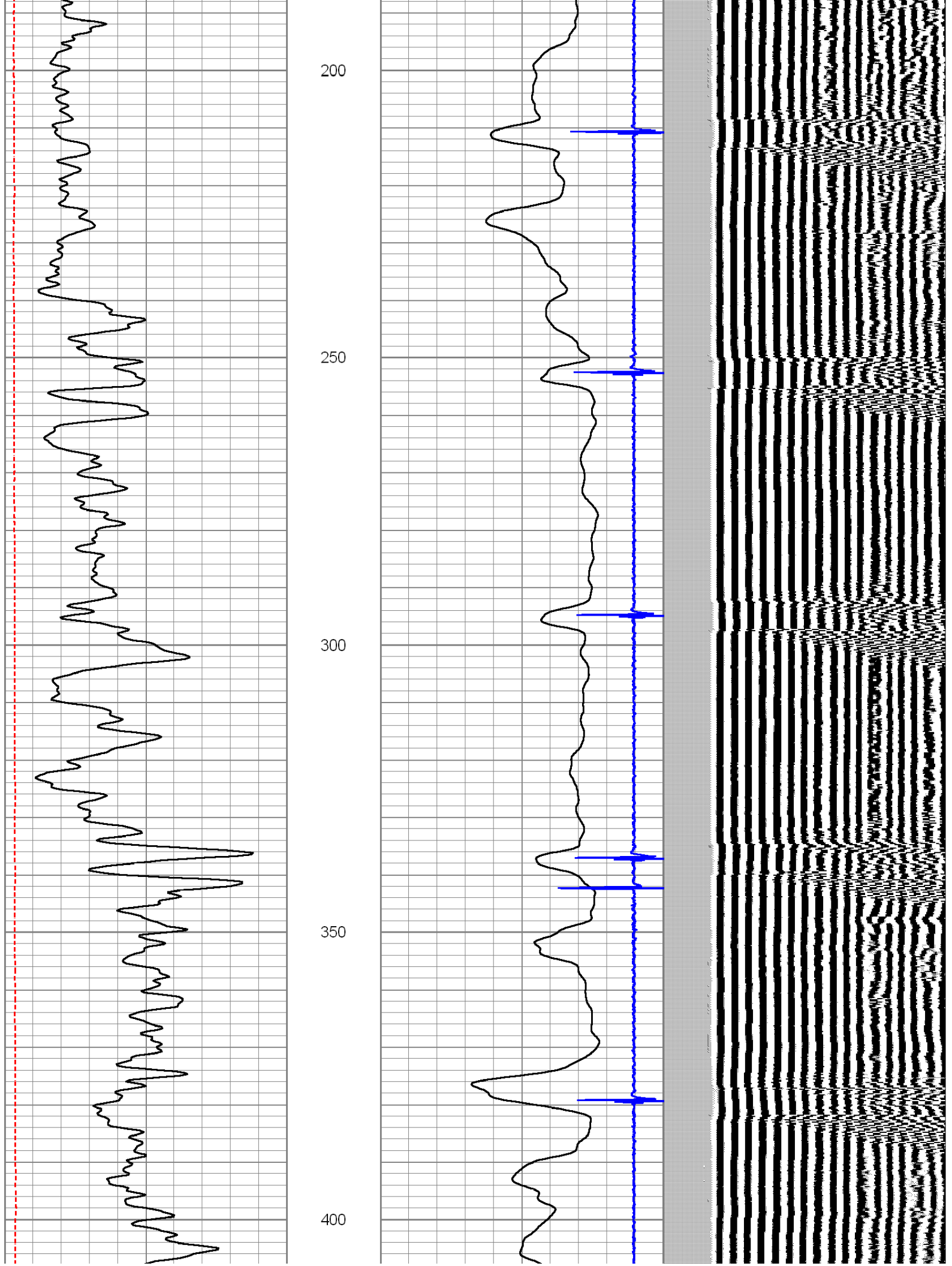


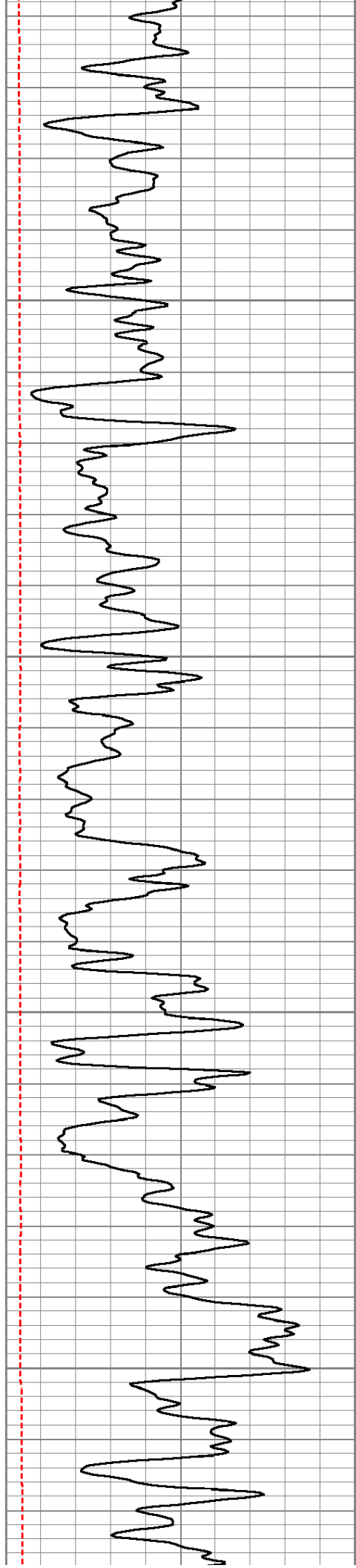
Main Pass

Database File: future_grcbl_6-19-2014.db
Dataset Pathname: pass4
Presentation Format: cbl dig
Dataset Creation: Thu Jun 19 08:29:06 2014 by Log SCH 120126
Charted by: Depth in Feet scaled 1:240

0	GR (GAPI)	150	AMP3	0	Amplitude (mV)	100	200	Variable Density	1200
0	Line Tension (lb)	5000	(mV)	0	Amplified Amplitude (mV)	10			
			-100	10	15	Collar Locator	-1.7		





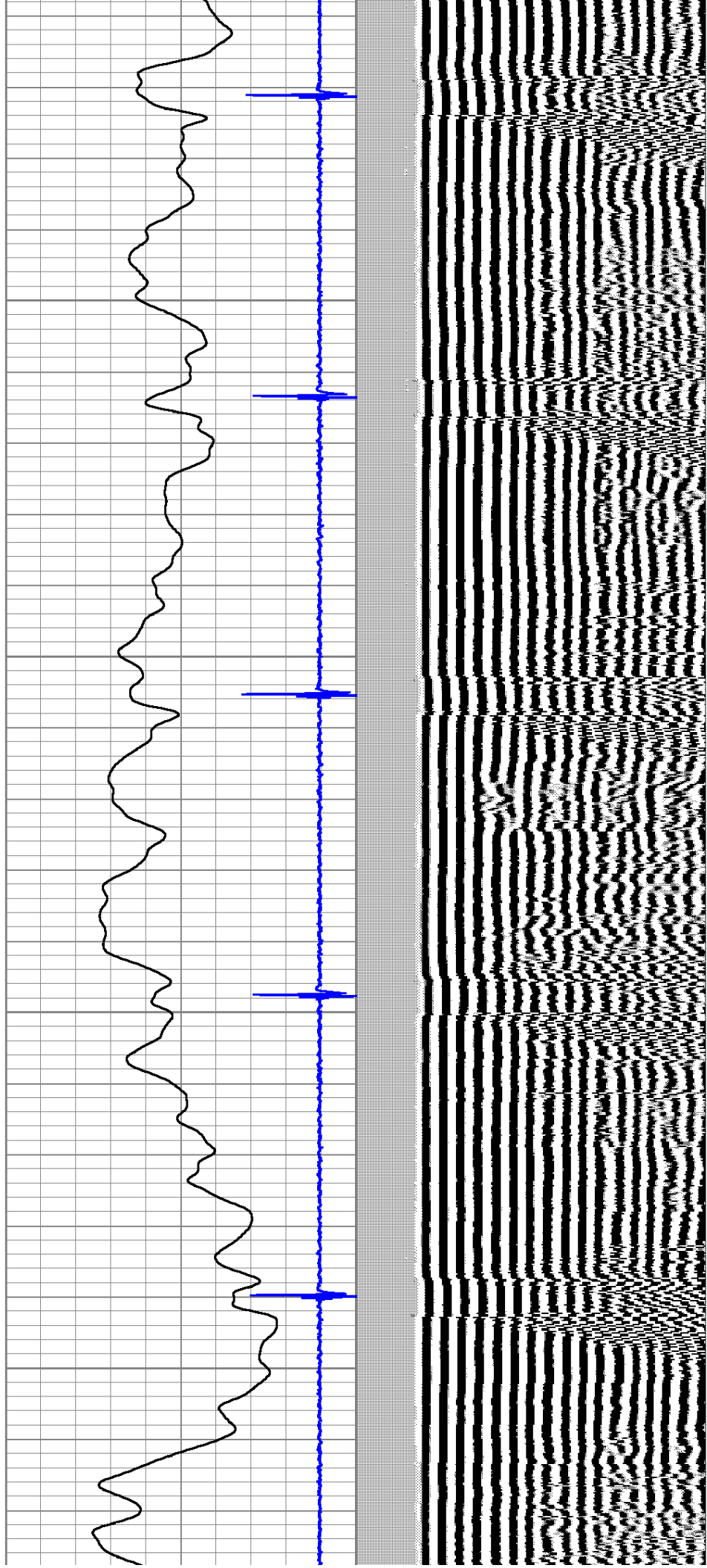


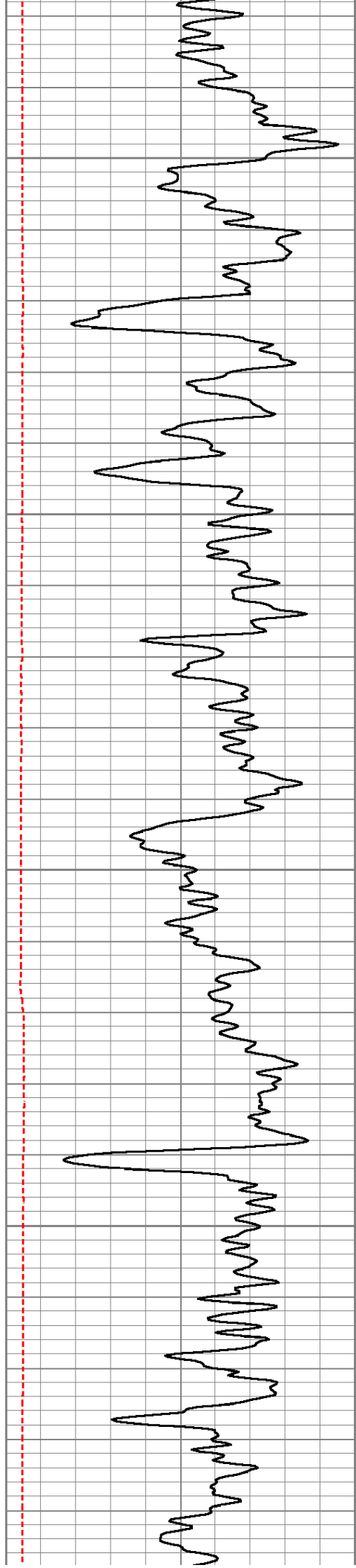
450

500

550

600



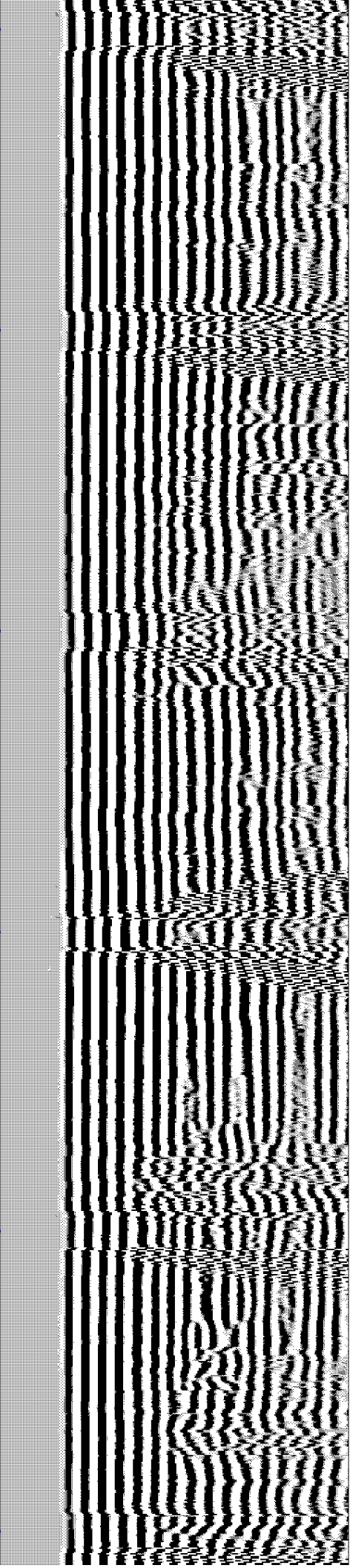
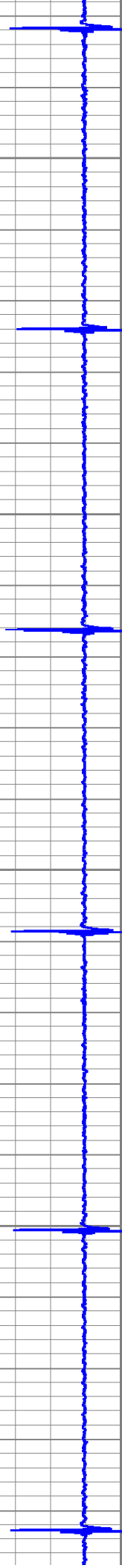


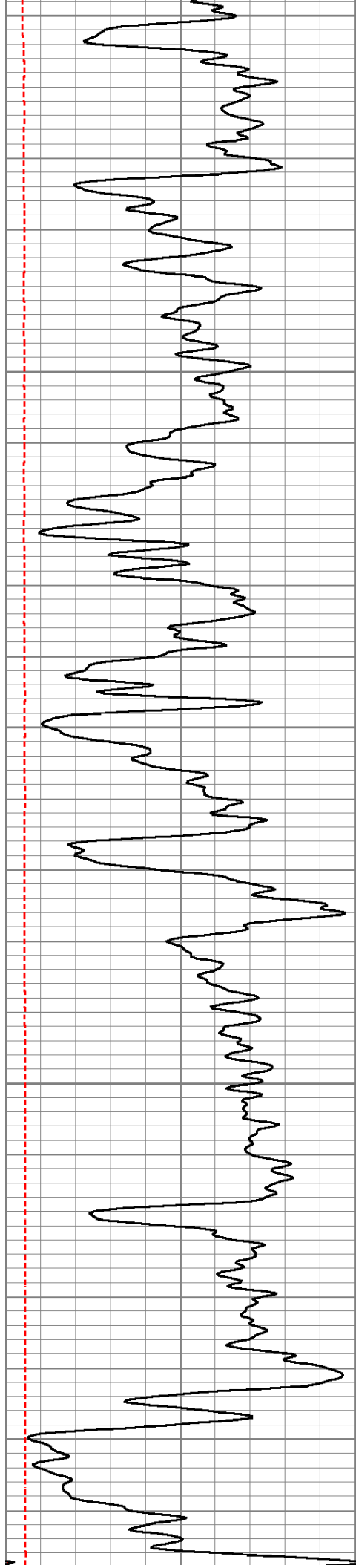
650

700

750

800





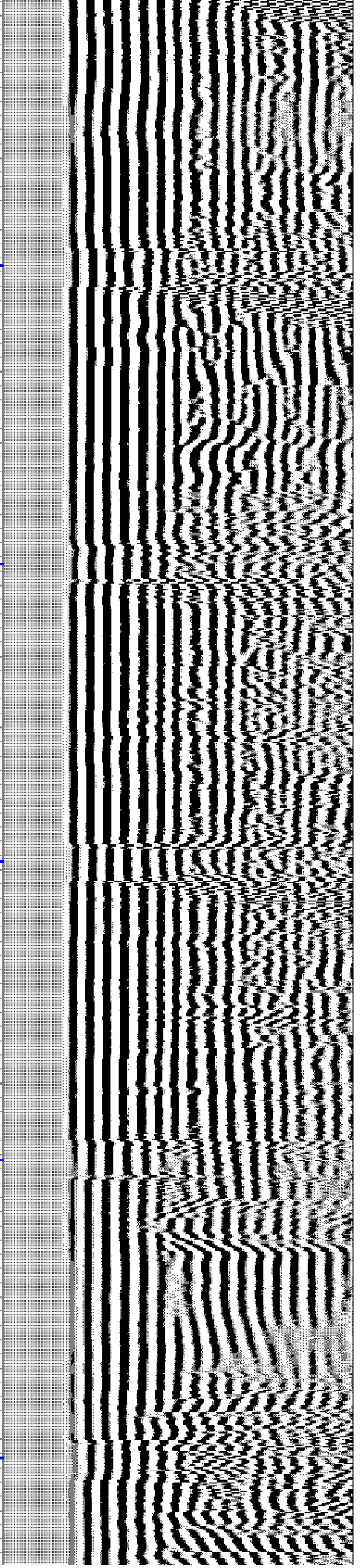
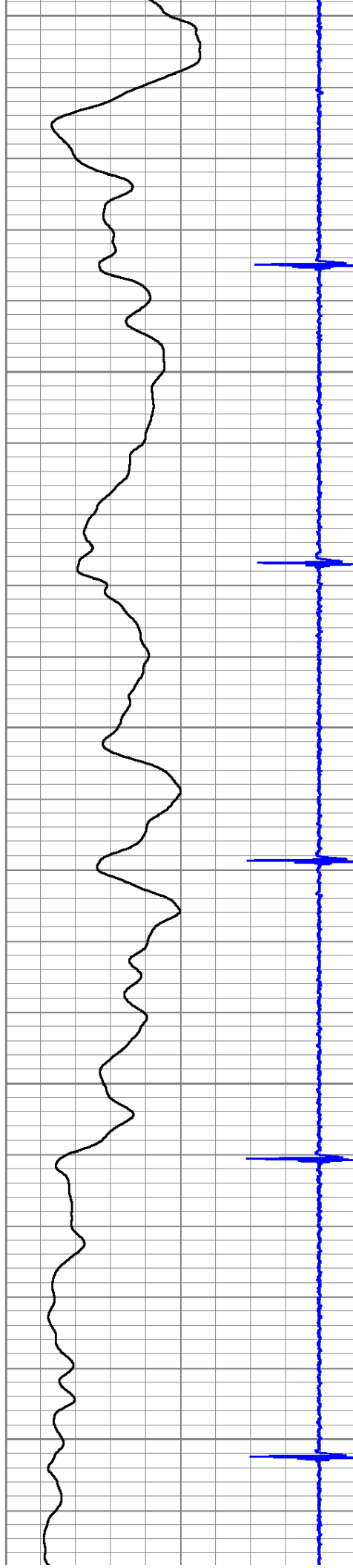
850

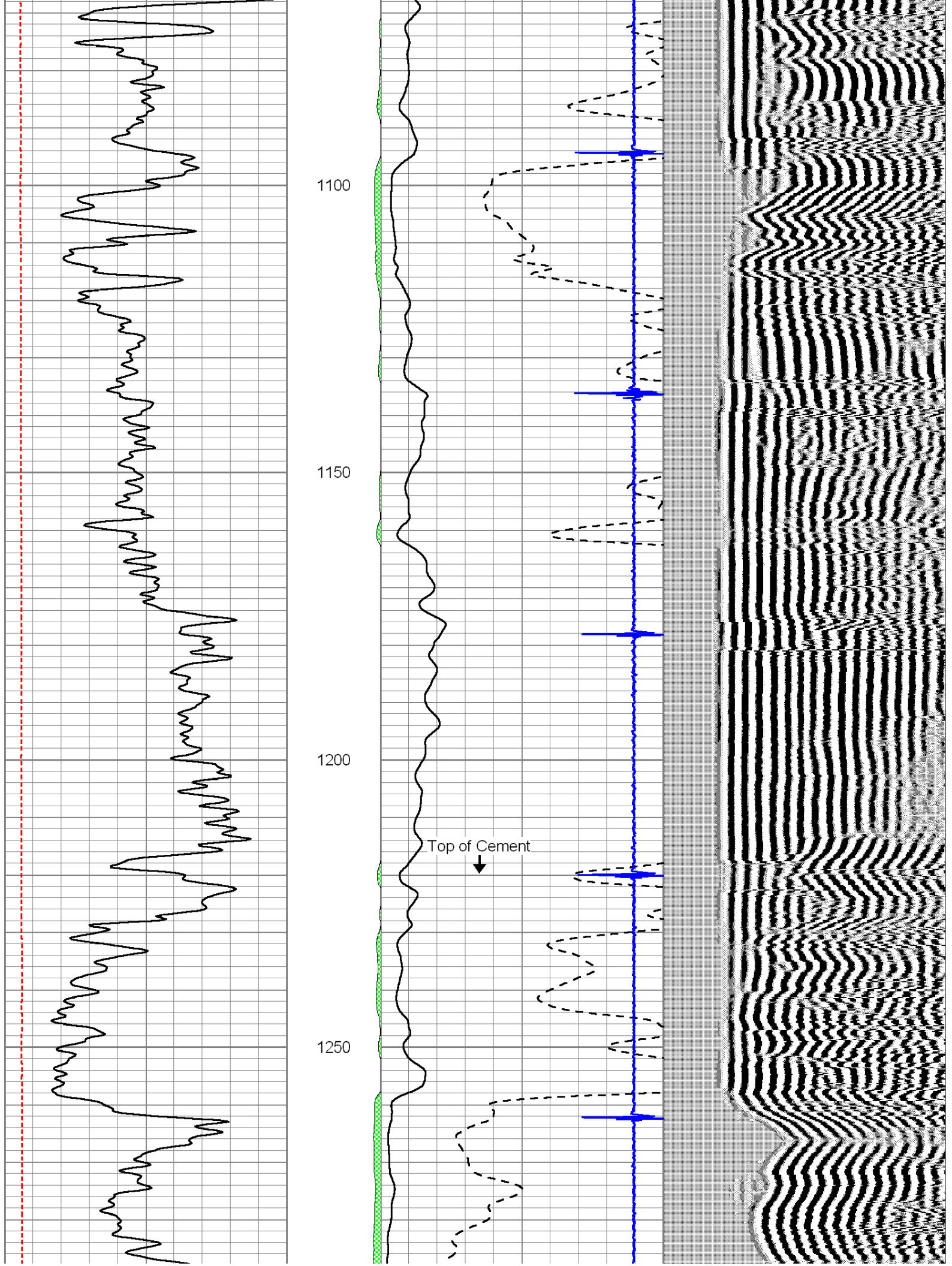
900

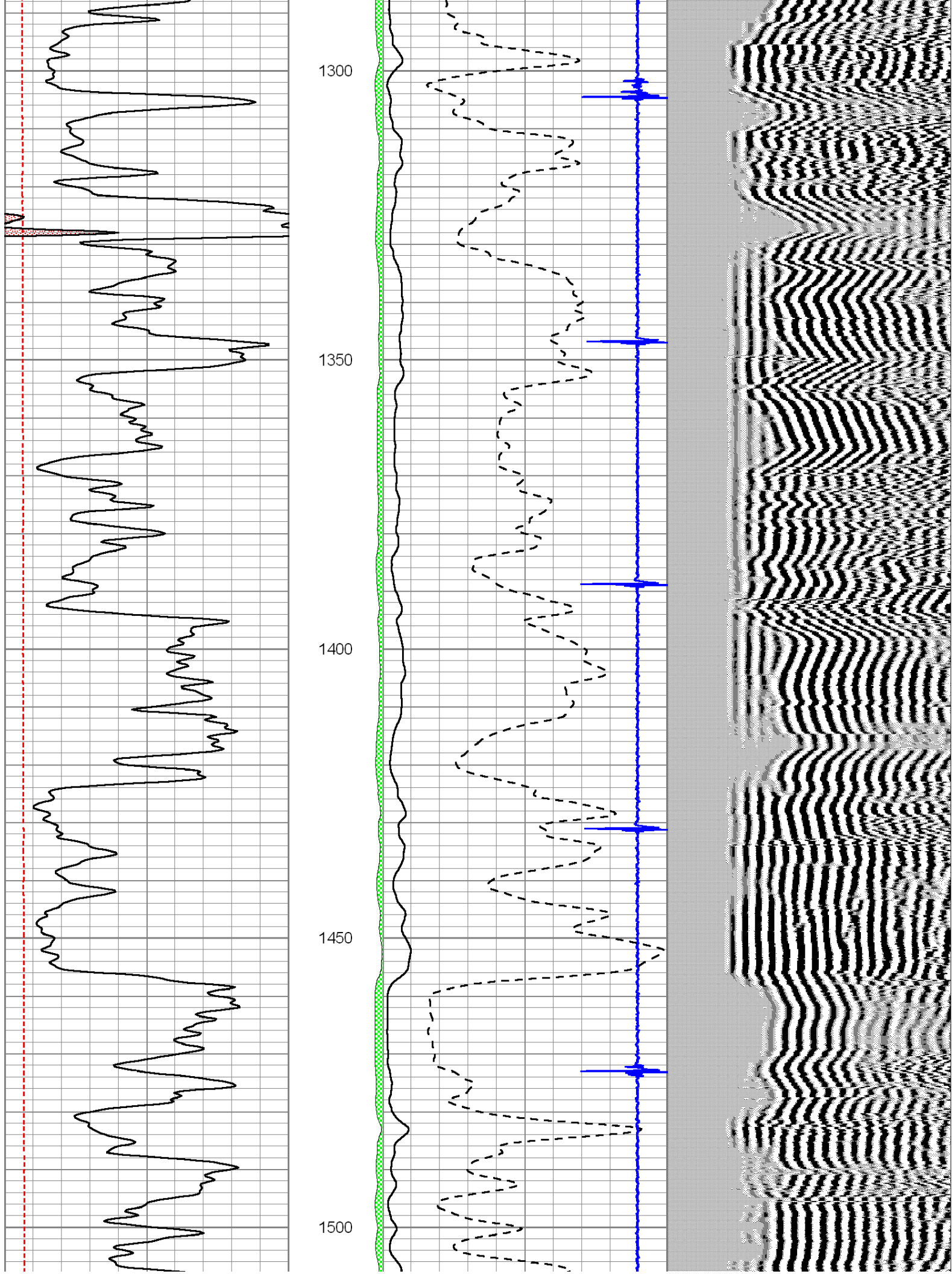
950

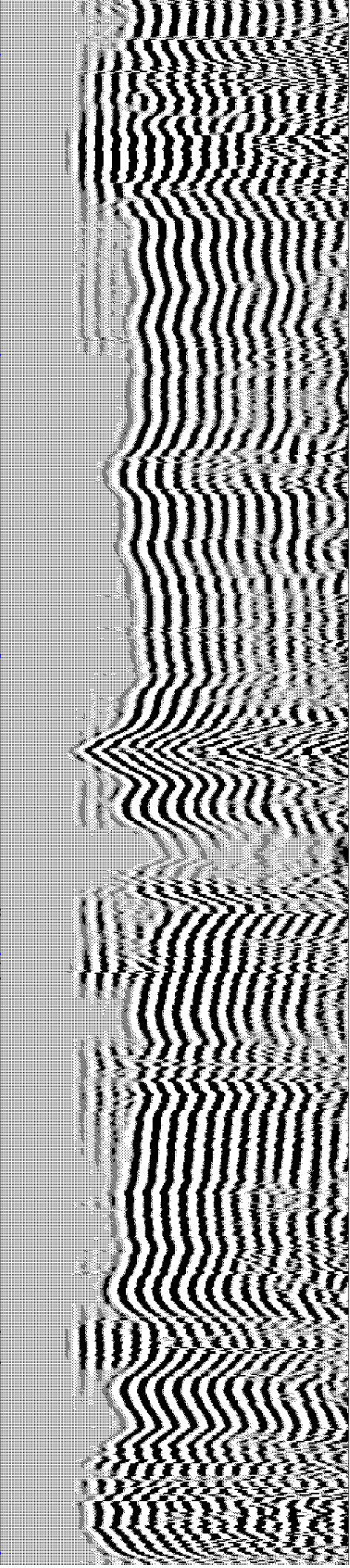
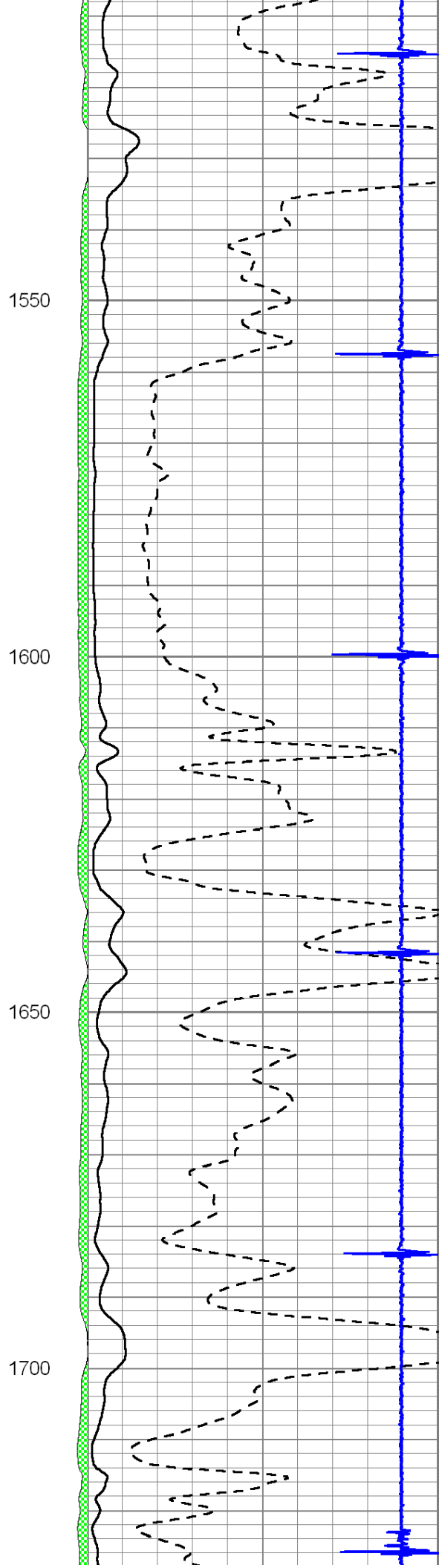
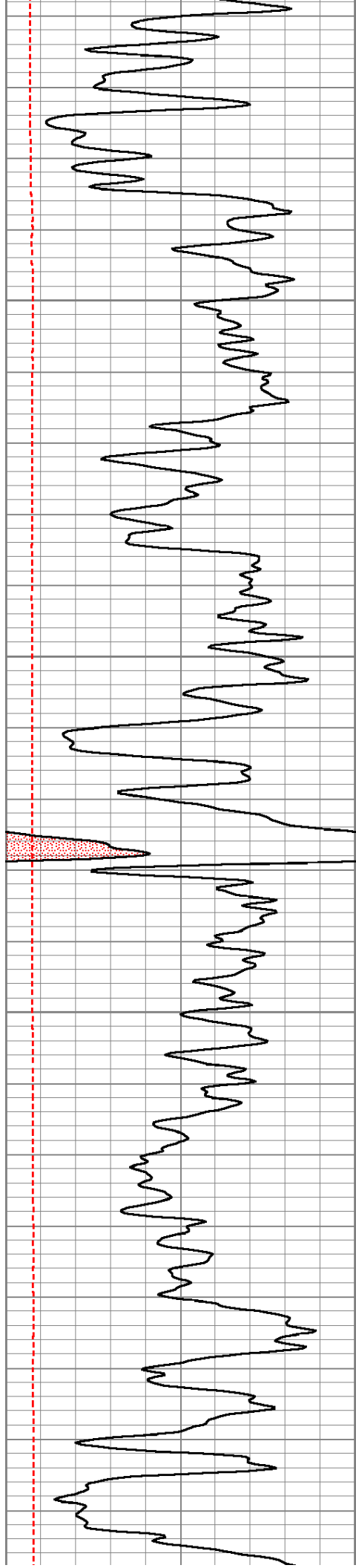
1000

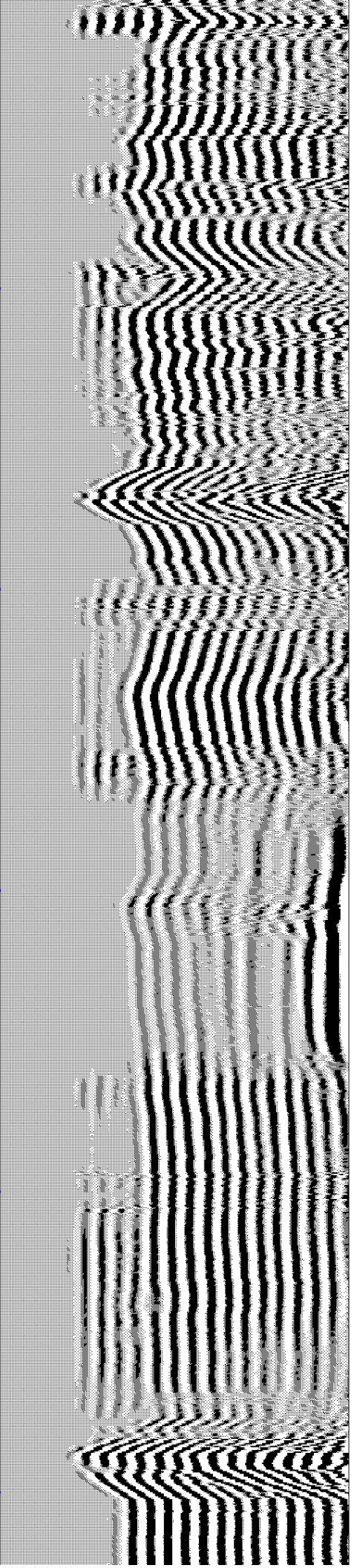
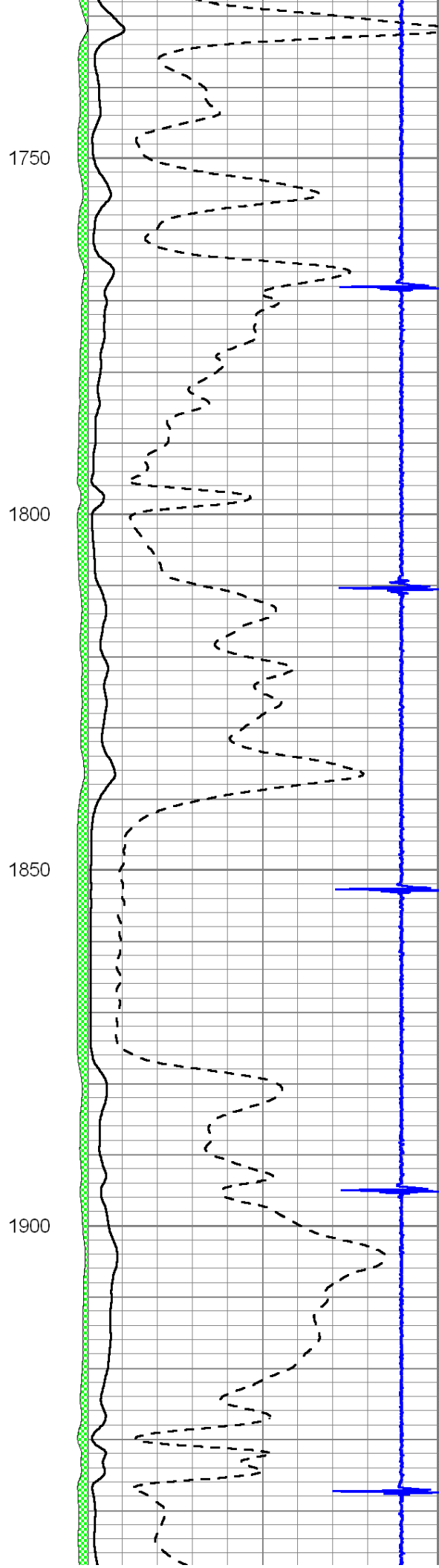
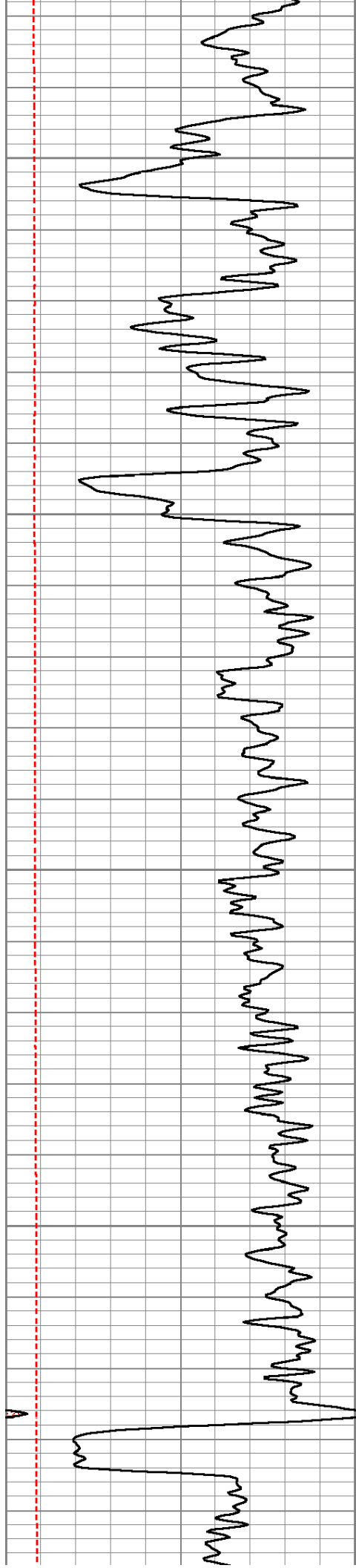
1050

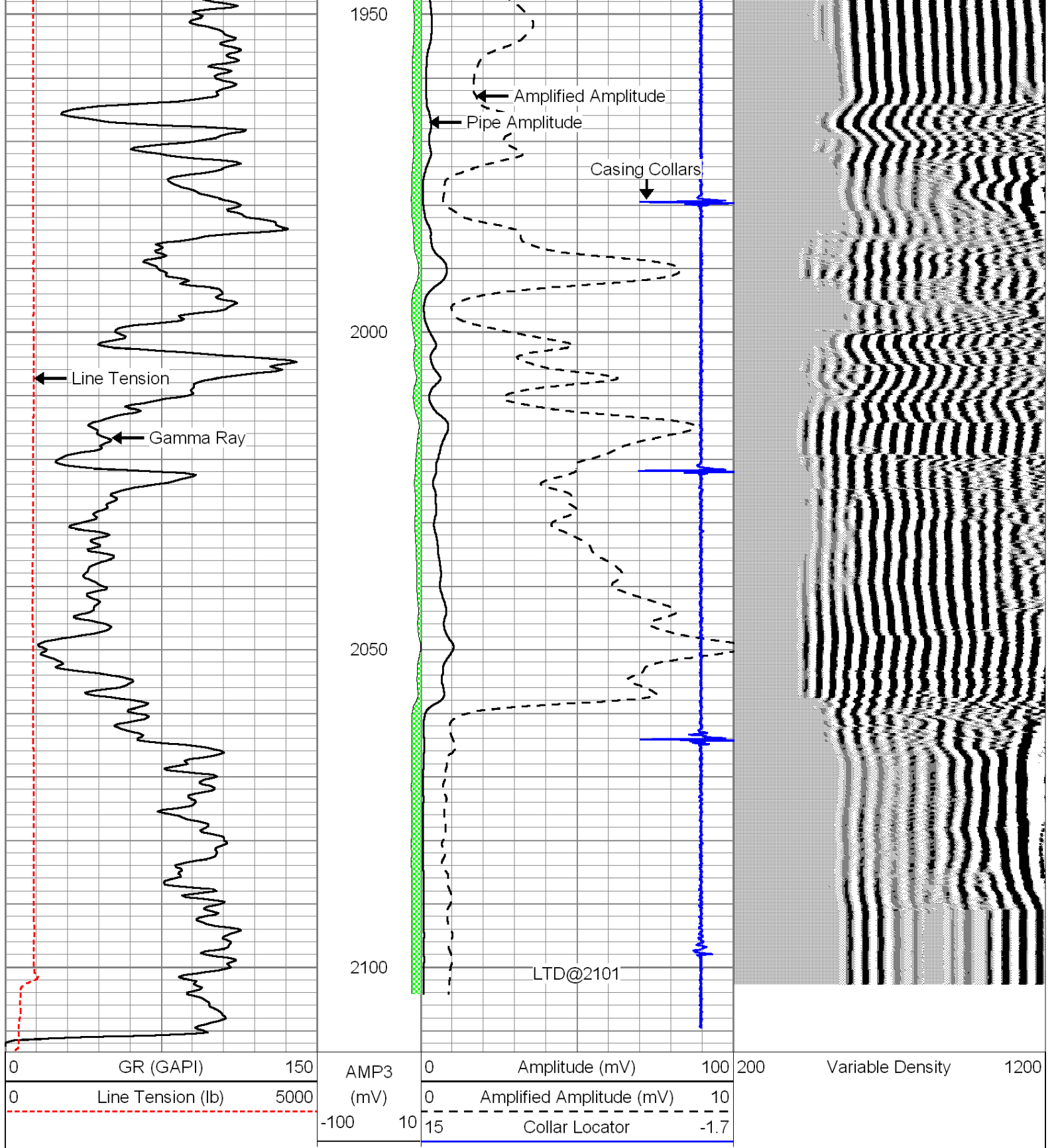












Repeat Section

Database File: future_grcbl_6-19-2014.db
 Dataset Pathname: pass3
 Presentation Format: cbl dig
 Dataset Creation: Thu Jun 19 08:23:29 2014 by Log SCH 120126

0	GR (GAPI)	150
0	Line Tension (lb)	5000

AMP3	0	Amplitude (mV)	100
(mV)	0	Amplified Amplitude (mV)	10
-100	10	Collar Locator	-1.7

200	Variable Density	1200
-----	------------------	------

