



DRILL STEM TEST REPORT

Prepared For: **Prospect Oil & Gas Corp**

PO Box 837
Russell KS 67665-0837

ATTN: Brad Hutchison

Krug A #1

3-13s-14w Russell,KS

Start Date: 2014.07.09 @ 14:35:18

End Date: 2014.07.09 @ 20:09:12

Job Ticket #: 59325 DST #: 1

Trilobite Testing, Inc
PO Box 362 Hays, KS 67601
ph: 785-625-4778 fax: 785-625-5620

Printed: 2014.07.15 @ 08:01:39



TRILOBITE TESTING, INC

DRILL STEM TEST REPORT

Prospect Oil & Gas Corp
 PO Box 837
 Russell KS 67665-0837
 ATTN: Brad Hutchison

3-13s-14w Russell,KS
Krug A #1
 Job Ticket: 59325 **DST#: 1**
 Test Start: 2014.07.09 @ 14:35:18

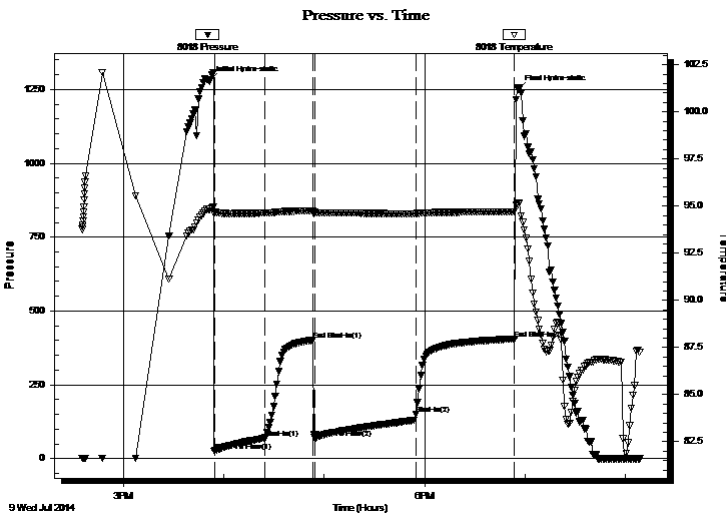
GENERAL INFORMATION:

Formation: **Toronto - LKC A**
 Deviated: No Whipstock: ft (KB)
 Test Type: Conventional Bottom Hole (Initial)
 Time Tool Opened: 15:54:13 Tester: Ray Schwager
 Time Test Ended: 20:09:12 Unit No: 70
 Interval: **2705.00 ft (KB) To 2780.00 ft (KB) (TVD)** Reference Elevations: 1600.00 ft (KB)
 Total Depth: 2780.00 ft (KB) (TVD) 1593.00 ft (CF)
 Hole Diameter: 7.88 inches Hole Condition: Fair KB to GR/CF: 7.00 ft

Serial #: 8018 Inside
 Press@RunDepth: 149.54 psig @ 2714.00 ft (KB) Capacity: 8000.00 psig
 Start Date: 2014.07.09 End Date: 2014.07.09 Last Calib.: 2014.07.09
 Start Time: 14:35:18 End Time: 20:09:12 Time On Btm: 2014.07.09 @ 15:51:13
 Time Off Btm: 2014.07.09 @ 18:56:12

TEST COMMENT: 30-IFP-strg bl in 3 min
 30-ISIP-no bl
 60-FFP-strg bl in 1 min
 60-FSIP-1" bl bk

PRESSURE SUMMARY



Time (Min.)	Pressure (psig)	Temp (deg F)	Annotation
0	1279.09	94.83	Initial Hydro-static
3	24.03	94.63	Open To Flow (1)
34	70.21	94.63	Shut-In(1)
62	401.11	94.75	End Shut-In(1)
63	70.63	94.66	Open To Flow (2)
124	149.54	94.60	Shut-In(2)
183	405.19	94.68	End Shut-In(2)
185	1249.39	95.11	Final Hydro-static

Recovery

Length (ft)	Description	Volume (bbl)
0.00	1640'GIP	0.00
95.00	HO&GCM 25%G35%O40%M	1.33
186.00	MGO 25%G25%M50%O	2.61

Gas Rates

	Choke (inches)	Pressure (psig)	Gas Rate (Mcf/d)



**TRILOBITE
TESTING, INC**

DRILL STEM TEST REPORT

TOOL DIAGRAM

Prospect Oil & Gas Corp

3-13s-14w Russell,KS

PO Box 837
Russell KS 67665-0837

Krug A #1

Job Ticket: 59325

DST#: 1

ATTN: Brad Hutchison

Test Start: 2014.07.09 @ 14:35:18

Tool Information

Drill Pipe:	Length: 2689.00 ft	Diameter: 3.80 inches	Volume: 37.72 bbl	Tool Weight: 2200.00 lb
Heavy Wt. Pipe:	Length: 0.00 ft	Diameter: 0.00 inches	Volume: 0.00 bbl	Weight set on Packer: 25000.00 lb
Drill Collar:	Length: 0.00 ft	Diameter: 0.00 inches	Volume: 0.00 bbl	Weight to Pull Loose: 45000.00 lb
			<u>Total Volume: 37.72 bbl</u>	Tool Chased 0.00 ft
Drill Pipe Above KB:	5.00 ft			String Weight: Initial 35000.00 lb
Depth to Top Packer:	2705.00 ft			Final 36000.00 lb
Depth to Bottom Packer:	ft			
Interval between Packers:	75.00 ft			
Tool Length:	96.00 ft			
Number of Packers:	2	Diameter: 6.75 inches		

Tool Comments:

Tool Description

Tool Description	Length (ft)	Serial No.	Position	Depth (ft)	Accum. Lengths
Change Over Sub	1.00			2685.00	
Shut In Tool	5.00			2690.00	
Hydraulic tool	5.00			2695.00	
Packer	5.00			2700.00	21.00 Bottom Of Top Packer
Packer	5.00			2705.00	
Stubb	1.00			2706.00	
Perforations	8.00			2714.00	
Recorder	0.00	8018	Inside	2714.00	
Recorder	0.00	8678	Outside	2714.00	
Blank Spacing	63.00			2777.00	
Bullnose	3.00			2780.00	75.00 Bottom Packers & Anchor

Total Tool Length: 96.00



**TRILOBITE
TESTING, INC**

DRILL STEM TEST REPORT

FLUID SUMMARY

Prospect Oil & Gas Corp
 PO Box 837
 Russell KS 67665-0837
 ATTN: Brad Hutchison

3-13s-14w Russell,KS
Krug A #1
 Job Ticket: 59325 **DST#: 1**
 Test Start: 2014.07.09 @ 14:35:18

Mud and Cushion Information

Mud Type: Gel Chem	Cushion Type:	Oil API:	deg API
Mud Weight: 9.00 lb/gal	Cushion Length: ft	Water Salinity:	ppm
Viscosity: 63.00 sec/qt	Cushion Volume: bbl		
Water Loss: 7.92 in ³	Gas Cushion Type:		
Resistivity: ohm.m	Gas Cushion Pressure: psig		
Salinity: 3700.00 ppm			
Filter Cake: 1.00 inches			

Recovery Information

Recovery Table

Length ft	Description	Volume bbl
0.00	1640'GIP	0.000
95.00	HO&GCM 25%G35%O40%M	1.333
186.00	MGO 25%G25%M50%O	2.609

Total Length: 281.00 ft Total Volume: 3.942 bbl
 Num Fluid Samples: 0 Num Gas Bombs: 0 Serial #:
 Laboratory Name: Laboratory Location:
 Recovery Comments:

Serial #: 8018

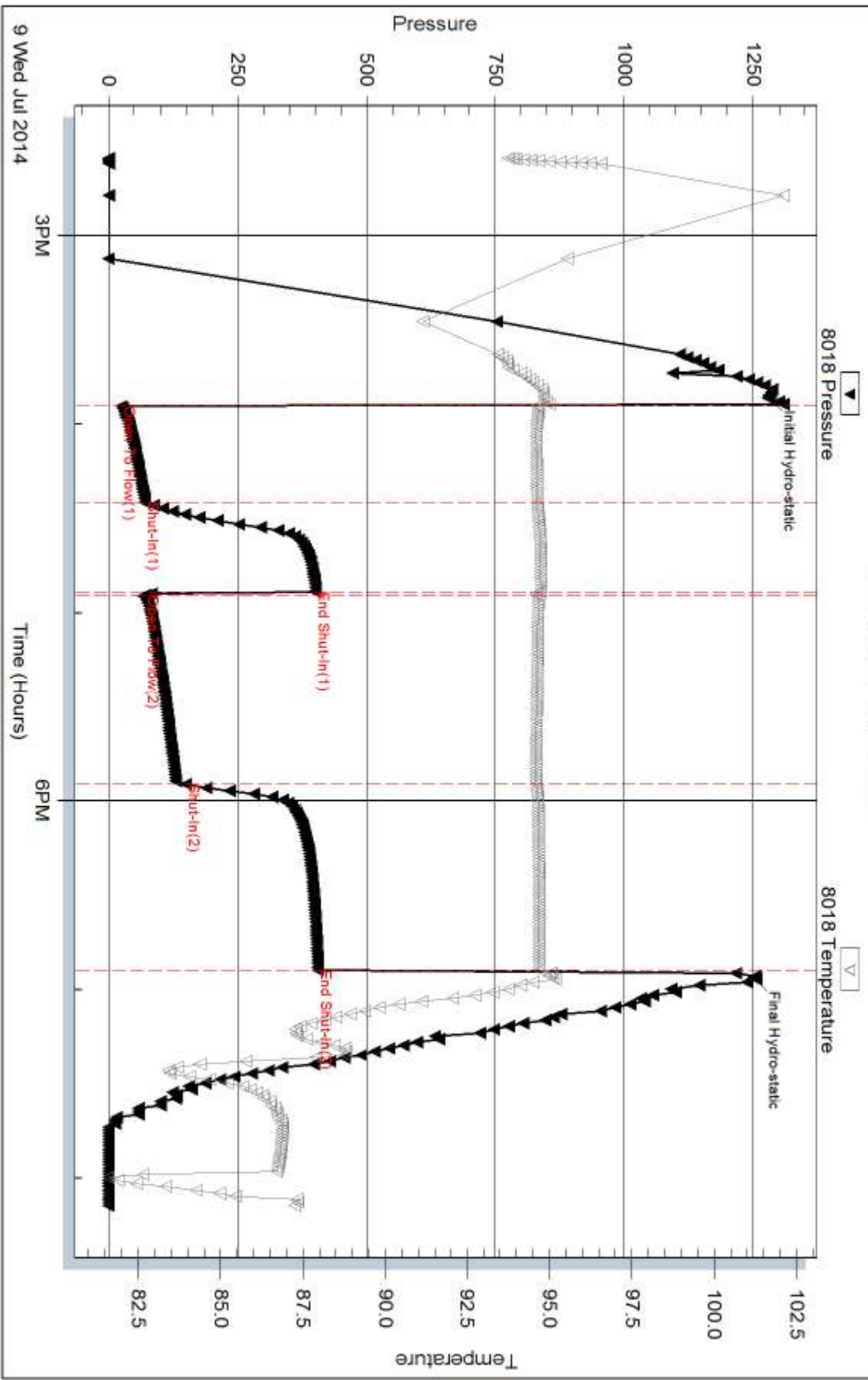
Inside

Prospect Oil & Gas Corp

Krug A #1

DST Test Number: 1

Pressure vs. Time

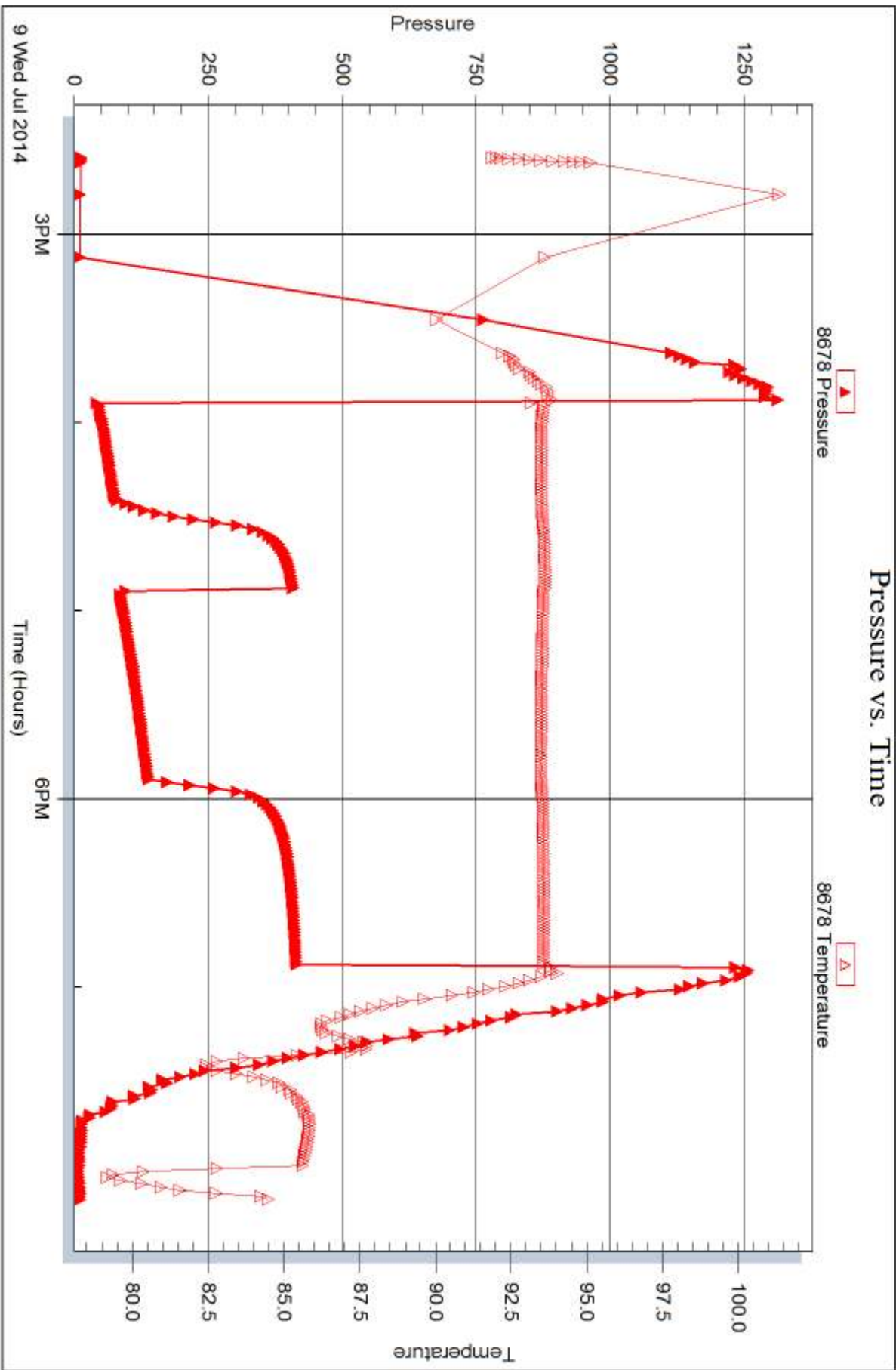


Serial #: 8678

Outside Prospect Oil & Gas Corp

Krug A #1

DST Test Number: 1





DRILL STEM TEST REPORT

Prepared For: **Prospect Oil & Gas Corp**

PO Box 837
Russell KS 67665-0837

ATTN: Brad Hutchison

Krug A #1

3-13s-14w Russell,KS

Start Date: 2014.07.10 @ 01:50:54

End Date: 2014.07.10 @ 08:14:48

Job Ticket #: 58826 DST #: 2

Trilobite Testing, Inc
PO Box 362 Hays, KS 67601
ph: 785-625-4778 fax: 785-625-5620

Printed: 2014.07.15 @ 08:01:17



**TRILOBITE
TESTING, INC**

DRILL STEM TEST REPORT

Prospect Oil & Gas Corp
 PO Box 837
 Russell KS 67665-0837
 ATTN: Brad Hutchison

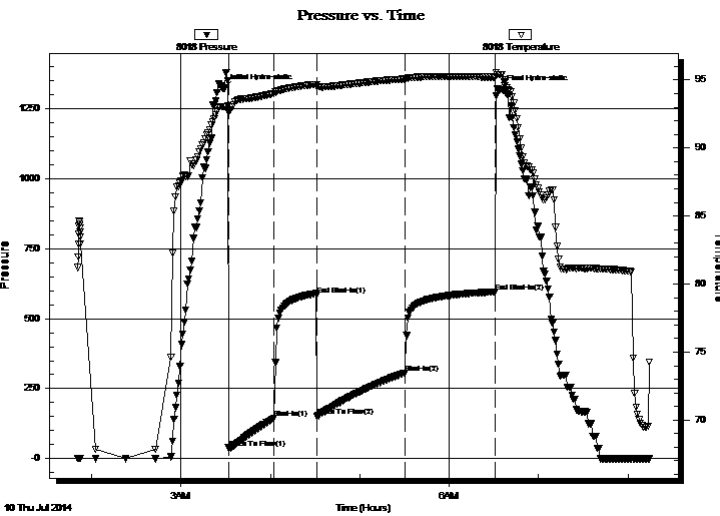
3-13s-14w Russell,KS
Krug A #1
 Job Ticket: 58826 **DST#: 2**
 Test Start: 2014.07.10 @ 01:50:54

GENERAL INFORMATION:

Formation: **LKC B-C**
 Deviated: No Whipstock: ft (KB)
 Time Tool Opened: 03:31:49
 Time Test Ended: 08:14:48
 Interval: **2780.00 ft (KB) To 2820.00 ft (KB) (TVD)**
 Total Depth: 2820.00 ft (KB) (TVD)
 Hole Diameter: 7.88 inches Hole Condition: Fair
 Test Type: Conventional Bottom Hole (Reset)
 Tester: Ray Schwager
 Unit No: 70
 Reference Elevations: 1600.00 ft (KB)
 1593.00 ft (CF)
 KB to GR/CF: 7.00 ft

Serial #: 8018 Inside
 Press@RunDepth: 306.51 psig @ 2784.00 ft (KB) Capacity: 8000.00 psig
 Start Date: 2014.07.10 End Date: 2014.07.10 Last Calib.: 2014.07.10
 Start Time: 01:50:54 End Time: 08:14:48 Time On Btm: 2014.07.10 @ 03:28:49
 Time Off Btm: 2014.07.10 @ 06:34:18

TEST COMMENT: 30-IFP-strg bl thru-out
 30-ISIP-1 1/2" bl bk
 60-FFP-strg bl in 4 min
 60-FSIP-3" bl bk



PRESSURE SUMMARY

Time (Min.)	Pressure (psig)	Temp (deg F)	Annotation
0	1323.73	93.05	Initial Hydro-static
3	37.94	92.63	Open To Flow (1)
34	143.59	94.01	Shut-In(1)
62	584.59	94.67	End Shut-In(1)
63	150.06	94.53	Open To Flow (2)
122	306.51	95.08	Shut-In(2)
182	595.72	95.20	End Shut-In(2)
186	1318.42	95.41	Final Hydro-static

Recovery

Length (ft)	Description	Volume (bbl)
0.00	900'GIP	0.00
186.00	MGO 10%G10%W 40%M40%O	2.61
124.00	SO&GCW 10%G2%O88%W	1.74
276.00	Water	3.87

* Recovery from multiple tests

Gas Rates

	Choke (inches)	Pressure (psig)	Gas Rate (Mcf/d)



**TRILOBITE
TESTING, INC**

DRILL STEM TEST REPORT

TOOL DIAGRAM

Prospect Oil & Gas Corp

3-13s-14w Russell,KS

PO Box 837
Russell KS 67665-0837

Krug A #1

Job Ticket: 58826

DST#: 2

ATTN: Brad Hutchison

Test Start: 2014.07.10 @ 01:50:54

Tool Information

Drill Pipe:	Length: 2780.00 ft	Diameter: 3.80 inches	Volume: 39.00 bbl	Tool Weight: 2200.00 lb
Heavy Wt. Pipe:	Length: 0.00 ft	Diameter: 0.00 inches	Volume: 0.00 bbl	Weight set on Packer: 25000.00 lb
Drill Collar:	Length: 0.00 ft	Diameter: 0.00 inches	Volume: 0.00 bbl	Weight to Pull Loose: lb
			<u>Total Volume: 39.00 bbl</u>	Tool Chased 0.00 ft
Drill Pipe Above KB:	21.00 ft			String Weight: Initial 38000.00 lb
Depth to Top Packer:	2780.00 ft			Final lb
Depth to Bottom Packer:	ft			
Interval between Packers:	40.00 ft			
Tool Length:	61.00 ft			
Number of Packers:	2	Diameter: 6.75 inches		

Tool Comments:

Tool Description	Length (ft)	Serial No.	Position	Depth (ft)	Accum. Lengths
------------------	-------------	------------	----------	------------	----------------

Change Over Sub	1.00			2760.00	
Shut In Tool	5.00			2765.00	
Hydraulic tool	5.00			2770.00	
Packer	5.00			2775.00	21.00 Bottom Of Top Packer
Packer	5.00			2780.00	
Stubb	1.00			2781.00	
Perforations	3.00			2784.00	
Recorder	0.00	8018	Inside	2784.00	
Recorder	0.00	8678	Outside	2784.00	
Blank Spacing	33.00			2817.00	
Bullnose	3.00			2820.00	40.00 Bottom Packers & Anchor

Total Tool Length: 61.00



**TRILOBITE
TESTING, INC**

DRILL STEM TEST REPORT

FLUID SUMMARY

Prospect Oil & Gas Corp
 PO Box 837
 Russell KS 67665-0837
 ATTN: Brad Hutchison

3-13s-14w Russell,KS
Krug A #1
 Job Ticket: 58826 **DST#: 2**
 Test Start: 2014.07.10 @ 01:50:54

Mud and Cushion Information

Mud Type: Gel Chem	Cushion Type:	Oil API:	deg API
Mud Weight: 9.00 lb/gal	Cushion Length: ft	Water Salinity:	63000 ppm
Viscosity: 56.00 sec/qt	Cushion Volume: bbl		
Water Loss: 7.94 in ³	Gas Cushion Type:		
Resistivity: ohm.m	Gas Cushion Pressure: psig		
Salinity: 3700.00 ppm			
Filter Cake: 1.00 inches			

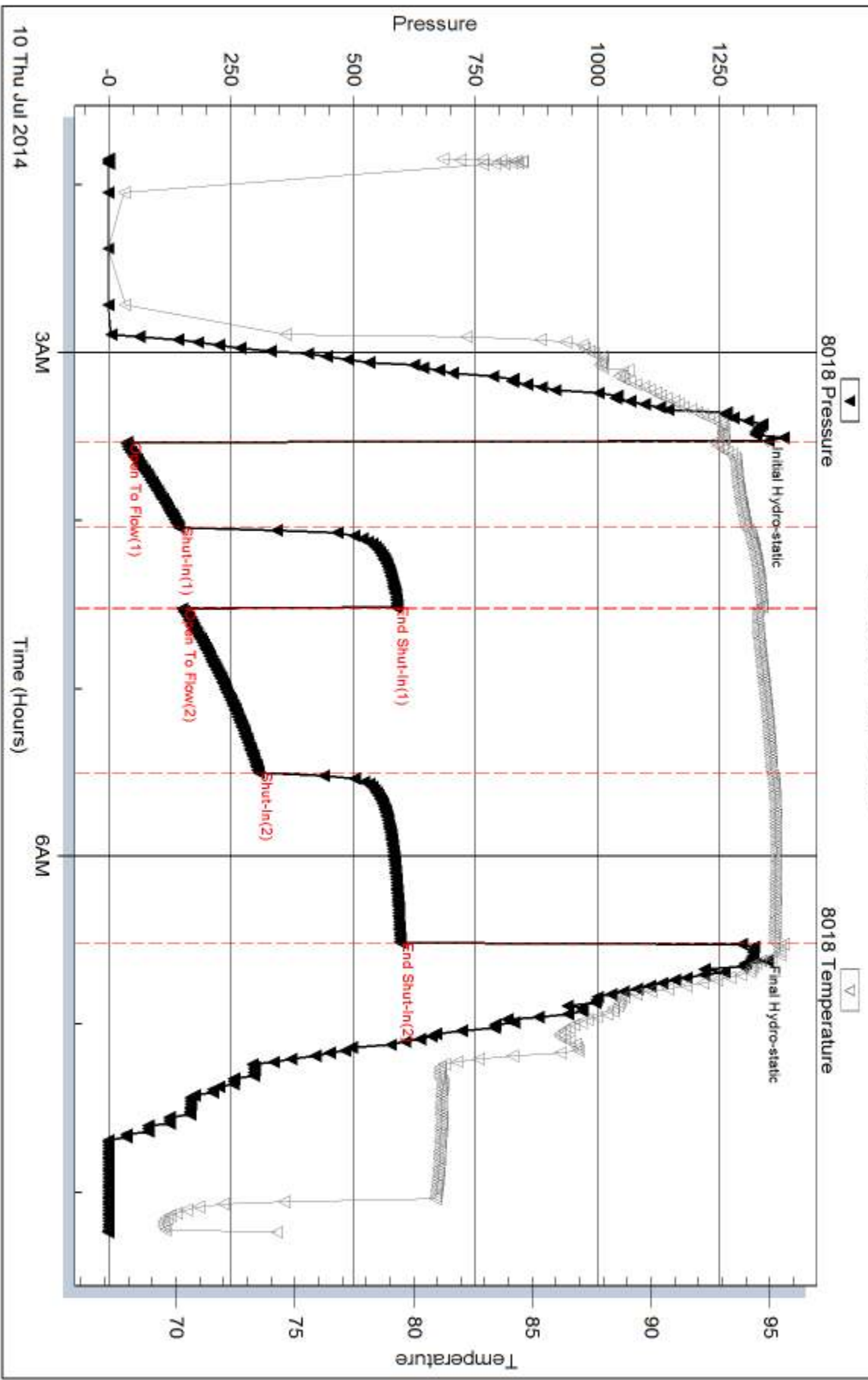
Recovery Information

Recovery Table

Length ft	Description	Volume bbl
0.00	900'GIP	0.000
186.00	MGO 10%G10%W 40%M40%O	2.609
124.00	SO&GCW 10%G2%O88%W	1.739
276.00	Water	3.872

Total Length: 586.00 ft Total Volume: 8.220 bbl
 Num Fluid Samples: 0 Num Gas Bombs: 0 Serial #:
 Laboratory Name: Laboratory Location:
 Recovery Comments: RW .13@65F

Pressure vs. Time

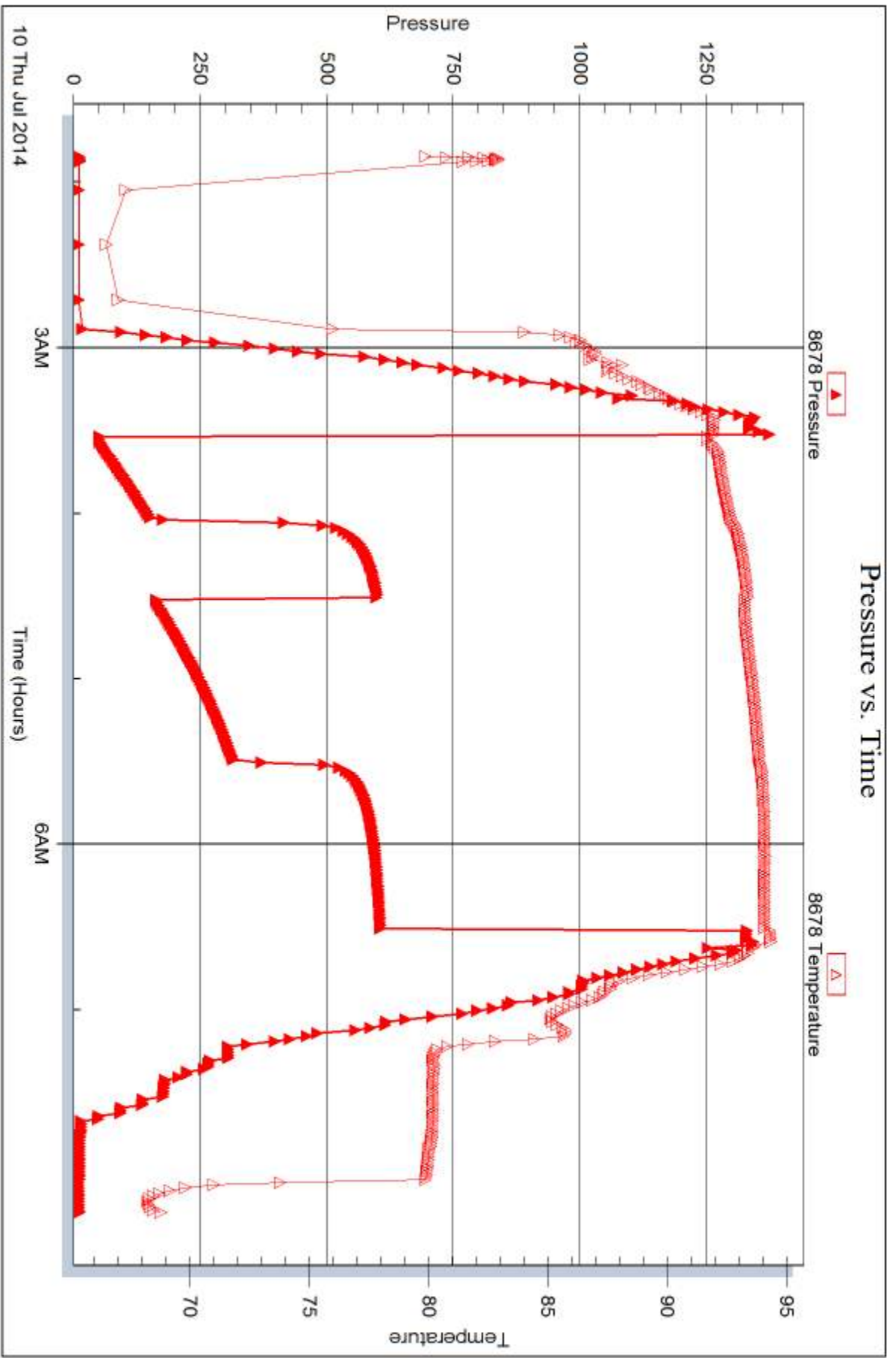


Serial #: 8678

Outside Prospect Oil & Gas Corp

Krug A #1

DST Test Number: 2



Trilobite Testing, Inc

Ref. No: 58826

Printed: 2014.07.15 @ 08:01:18



DRILL STEM TEST REPORT

Prepared For: **Prospect Oil & Gas Corp**

PO Box 837
Russell KS 67665-0837

ATTN: Brad Hutchison

Krug A #1

3-13s-14w Russell,KS

Start Date: 2014.07.10 @ 14:20:52

End Date: 2014.07.10 @ 20:18:16

Job Ticket #: 58827 DST #: 3

Trilobite Testing, Inc
PO Box 362 Hays, KS 67601
ph: 785-625-4778 fax: 785-625-5620

Printed: 2014.07.15 @ 08:00:47



TRILOBITE TESTING, INC

DRILL STEM TEST REPORT

Prospect Oil & Gas Corp
 PO Box 837
 Russell KS 67665-0837
 ATTN: Brad Hutchison

3-13s-14w Russell,KS
Krug A #1
 Job Ticket: 58827 **DST#: 3**
 Test Start: 2014.07.10 @ 14:20:52

GENERAL INFORMATION:

Formation: **LKC F**
 Deviated: No Whipstock: ft (KB)
 Time Tool Opened: 15:25:47
 Time Test Ended: 20:18:16
 Interval: **2720.00 ft (KB) To 2765.00 ft (KB) (TVD)**
 Total Depth: 2780.00 ft (KB) (TVD)
 Hole Diameter: 7.88 inches Hole Condition: Fair
 Test Type: Conventional Bottom Hole (Reset)
 Tester: Ray Schwager
 Unit No: 70
 Reference Elevations: 1600.00 ft (KB)
 1593.00 ft (CF)
 KB to GR/CF: 7.00 ft

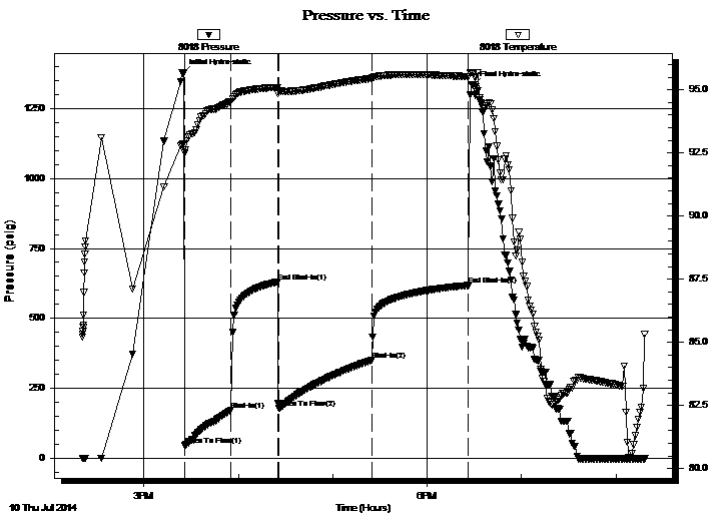
Serial #: 8018

Inside

Press@RunDepth: 351.93 psig @ 2729.00 ft (KB) Capacity: 8000.00 psig
 Start Date: 2014.07.10 End Date: 2014.07.10 Last Calib.: 2014.07.10
 Start Time: 14:20:52 End Time: 20:18:16 Time On Btm: 2014.07.10 @ 15:24:47
 Time Off Btm: 2014.07.10 @ 18:29:17

TEST COMMENT: 30-IFP-strg bl in 2 min
 30-ISIP- 2 1/2" bl bk
 60-FFP-strg bl in 3 min
 60-FSIP- 4" bl bk

PRESSURE SUMMARY



Time (Min.)	Pressure (psig)	Temp (deg F)	Annotation
0	1373.33	92.86	Initial Hydro-static
1	48.77	92.49	Open To Flow (1)
31	172.48	94.52	Shut-In(1)
60	630.37	95.10	End Shut-In(1)
61	181.05	94.96	Open To Flow (2)
120	351.93	95.44	Shut-In(2)
182	618.29	95.52	End Shut-In(2)
185	1332.39	95.65	Final Hydro-static

Recovery

Length (ft)	Description	Volume (bbl)
0.00	1425'GIP	0.00
560.00	CO	7.86
186.00	GMO 40%G10%M50%O	2.61
124.00	Water	1.74

* Recovery from multiple tests

Gas Rates

Choke (inches)	Pressure (psig)	Gas Rate (Mcf/d)



**TRILOBITE
TESTING, INC**

DRILL STEM TEST REPORT

TOOL DIAGRAM

Prospect Oil & Gas Corp

3-13s-14w Russell,KS

PO Box 837
Russell KS 67665-0837

Krug A #1

Job Ticket: 58827

DST#: 3

ATTN: Brad Hutchison

Test Start: 2014.07.10 @ 14:20:52

Tool Information

Drill Pipe:	Length: 2713.00 ft	Diameter: 3.80 inches	Volume: 38.06 bbl	Tool Weight: 2200.00 lb
Heavy Wt. Pipe:	Length: 0.00 ft	Diameter: 0.00 inches	Volume: 0.00 bbl	Weight set on Packer: 25000.00 lb
Drill Collar:	Length: 0.00 ft	Diameter: 0.00 inches	Volume: 0.00 bbl	Weight to Pull Loose: 55000.00 lb
			<u>Total Volume: 38.06 bbl</u>	Tool Chased 0.00 ft
Drill Pipe Above KB:	14.00 ft			String Weight: Initial 38000.00 lb
Depth to Top Packer:	2720.00 ft			Final 40000.00 lb
Depth to Bottom Packer:	ft			
Interval between Packers:	45.00 ft			
Tool Length:	66.00 ft			
Number of Packers:	2	Diameter: 6.75 inches		

Tool Comments:

Tool Description

Tool Description	Length (ft)	Serial No.	Position	Depth (ft)	Accum. Lengths
Change Over Sub	1.00			2700.00	
Shut In Tool	5.00			2705.00	
Hydraulic tool	5.00			2710.00	
Packer	5.00			2715.00	21.00 Bottom Of Top Packer
Packer	5.00			2720.00	
Stubb	1.00			2721.00	
Perforations	8.00			2729.00	
Recorder	0.00	8018	Inside	2729.00	
Recorder	0.00	8678	Outside	2729.00	
Blank Spacing	33.00			2762.00	
Bullnose	3.00			2765.00	45.00 Bottom Packers & Anchor

Total Tool Length: 66.00



**TRILOBITE
TESTING, INC**

DRILL STEM TEST REPORT

FLUID SUMMARY

Prospect Oil & Gas Corp

3-13s-14w Russell,KS

PO Box 837
Russell KS 67665-0837

Krug A #1

Job Ticket: 58827

DST#: 3

ATTN: Brad Hutchison

Test Start: 2014.07.10 @ 14:20:52

Mud and Cushion Information

Mud Type: Gel Chem

Cushion Type:

Oil API:

40 deg API

Mud Weight: 9.00 lb/gal

Cushion Length:

ft

Water Salinity:

50000 ppm

Viscosity: 63.00 sec/qt

Cushion Volume:

bbf

Water Loss: 7.91 in³

Gas Cushion Type:

Resistivity: ohm.m

Gas Cushion Pressure:

psig

Salinity: 3700.00 ppm

Filter Cake: 1.00 inches

Recovery Information

Recovery Table

Length ft	Description	Volume bbf
0.00	1425'GIP	0.000
560.00	CO	7.855
186.00	GMO 40%G10%M50%O	2.609
124.00	Water	1.739

Total Length: 870.00 ft Total Volume: 12.203 bbf

Num Fluid Samples: 0

Num Gas Bombs: 0

Serial #:

Laboratory Name:

Laboratory Location:

Recovery Comments: RW .16@65F

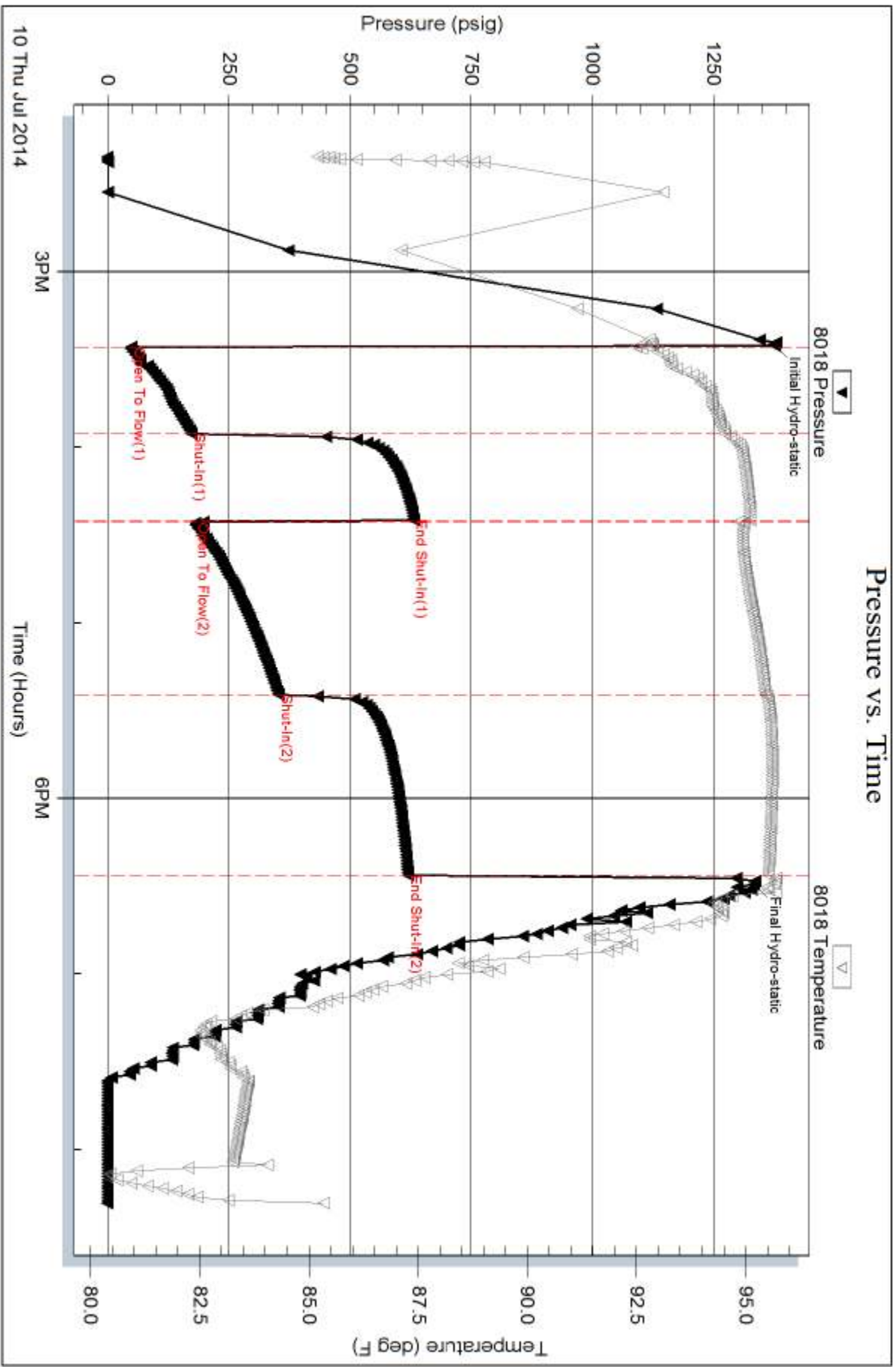
Serial #: 8018

Inside

Prospect Oil & Gas Corp

Krug A #1

DST Test Number: 3

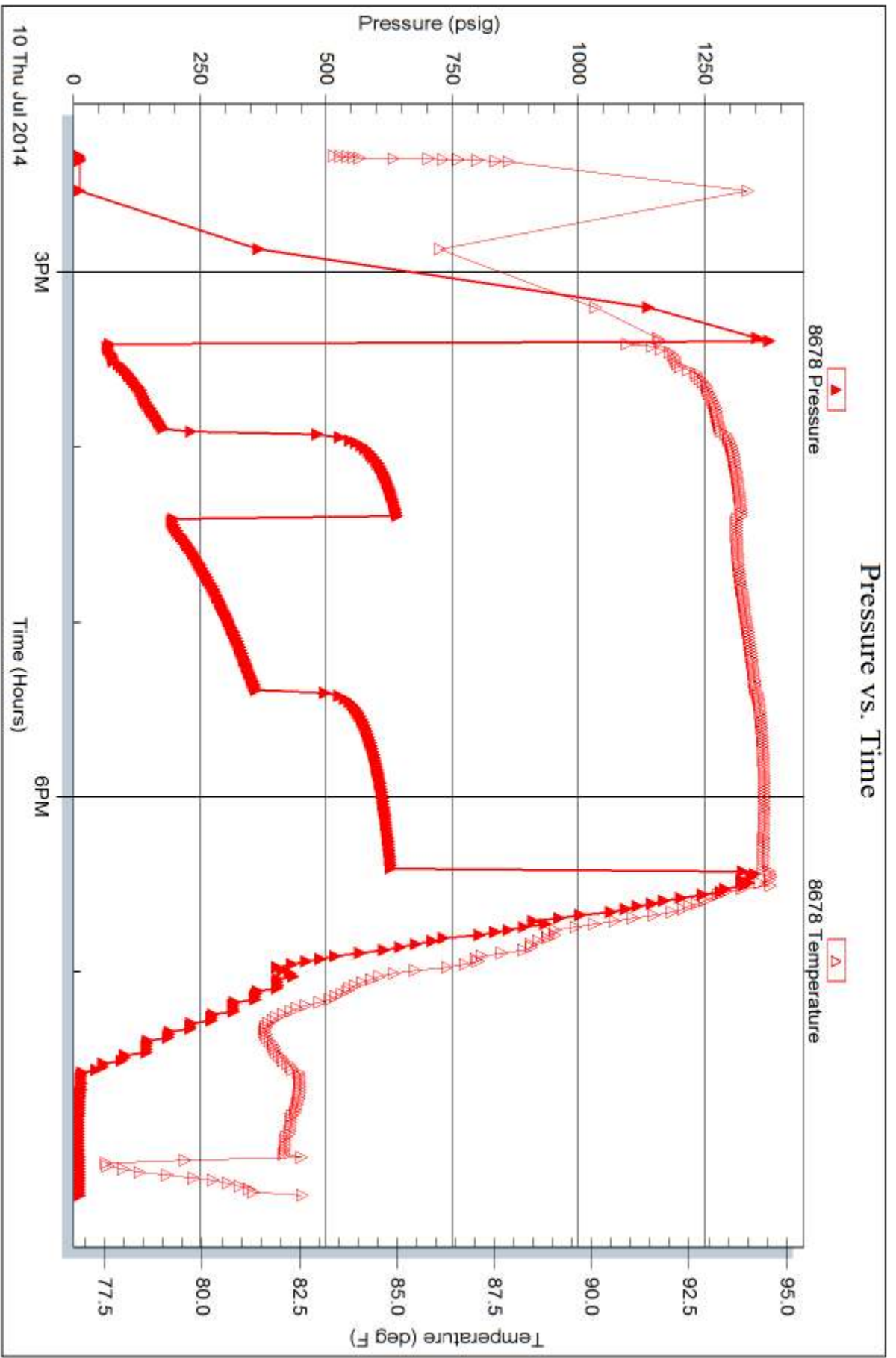


Serial #: 8678

Outside Prospect Oil & Gas Corp

Krug A #1

DST Test Number: 3



Trilobite Testing, Inc

Ref. No: 58827

Printed: 2014.07.15 @ 08:00:48



TRILOBITE TESTING INC.

1515 Commerce Parkway • Hays, Kansas 67601

Test Ticket

NO. 59325 21231

Well Name & No. Krug A#1 Test No. 1 Date 7-9-14
 Company Prospect Oil & Gas Corp Elevation 1600 KB 1593 GL
 Address Po Box 837 Russell, Mo 67665-0837
 Co. Rep / Geo. Brad Hutchison Rig Royal Rig 2
 Location: Sec. 3 Twp. 13^s Rge. 14^w Co. Russell State Ko

Interval Tested 2705-2780 Zone Tested TORONTO-LKC A
 Anchor Length 75 Drill Pipe Run 2689 Mud Wt. 9
 Top Packer Depth 2700 Drill Collars Run - Vis 63
 Bottom Packer Depth 2705 Wt. Pipe Run - WL 8
 Total Depth 2780 Chlorides 3700 ppm System LCM -
 Blow Description IFP - STRONG BLOW IN 3 MIN
ISIP - NO BLOW
FFP - STRONG BLOW IN 1 MIN
FSIP - 1" BLOW BACK

Rec	Feet of	%gas	%oil	%water	%mud
<u>1640</u>	<u>GIP</u>				
<u>95</u>	<u>HO+GCM</u>	<u>25</u>	<u>35</u>	<u>40</u>	
<u>186</u>	<u>MGO</u>	<u>25</u>	<u>50</u>	<u>25</u>	

Rec Total 281 BHT 94 Gravity - API RW - @ - ° F Chlorides - ppm
 (A) Initial Hydrostatic 1279 Test 1150 T-On Location 1325
 (B) First Initial Flow 24 Jars - T-Started 1435
 (C) First Final Flow 70 Safety Joint - T-Open 1555
 (D) Initial Shut-In 401 Circ Sub - T-Pulled 1855
 (E) Second Initial Flow 70 Hourly Standby - T-Out 2009
 (F) Second Final Flow 149 Mileage 60 RT 93 Comments -
 (G) Final Shut-In 405 Sampler -
 (H) Final Hydrostatic 1249 Straddle - Ruined Shale Packer -
 Shale Packer - Ruined Packer -
 Extra Packer - Extra Copies -
 Initial Open 30 Extra Recorder - Sub Total 0
 Initial Shut-In 30 Day Standby - Total 1243
 Final Flow 60 Accessibility - MP/DST Disc't -
 Final Shut-In 60 Sub Total 1243

Approved By _____ Our Representative RAY SCHWAGER Thank you
 Trilobite Testing Inc. shall not be liable for damaged of any kind of the property or personnel of the one for whom a test is made, or for any loss suffered or sustained, directly or indirectly, through the use of its equipment, or its statements or opinion concerning the results of any test, tools lost or damaged in the hole shall be paid for at cost by the party for whom the test is made.



TRILOBITE TESTING INC.

1515 Commerce Parkway • Hays, Kansas 67601

Test Ticket

NO. 58826

4/10

Well Name & No. Krug A#1 Test No. 2 Date 7-10-14
 Company Prospect Oil + Gas Corp Elevation 1600 KB 1593 GL
 Address Po Box 837 Russell, Ko 67665-0837
 Co. Rep / Geo. BRAD HUTCHISON Rig ROYAL RIG 2
 Location: Sec. 3 Twp. 13^s Rge. 14^w Co. Russell State Ko

Interval Tested 2780-2820 Zone Tested LKC B-C
 Anchor Length 40 Drill Pipe Run 2780 Mud Wt. 8.8
 Top Packer Depth 2775 Drill Collars Run - Vis 56
 Bottom Packer Depth 2780 Wt. Pipe Run - WL 8
 Total Depth 3820 Chlorides 3700 ppm System LCM -

Blow Description IFP - STRONG BLOW IN 3 MIN
ISIP - 1 1/2" BLOW BACK
FFP - STRONG BLOW IN 4 MIN
FSIP - 3" BLOW BACK

Rec	Feet of	%gas	%oil	%water	%mud
<u>900</u>	<u>GTA</u>				
<u>186</u>	<u>MGO</u>	<u>10</u>	<u>40</u>	<u>10</u>	<u>40</u>
<u>124</u>	<u>SOCW</u>	<u>10</u>	<u>2</u>	<u>88</u>	
<u>276</u>	<u>WATER</u>				

Rec Total 586 BHT 95 Gravity - API RW .13 @ 65 ° F Chlorides 63000 ppm

(A) Initial Hydrostatic 1323 Test 1150 T-On Location 0130
 (B) First Initial Flow 37 Jars _____ T-Started 0150
 (C) First Final Flow 143 Safety Joint _____ T-Open 0330
 (D) Initial Shut-In 584 Circ Sub _____ T-Pulled 0630
 (E) Second Initial Flow 150 Hourly Standby _____ T-Out 0814
 (F) Second Final Flow 306 Mileage 60 RT 93 Comments _____
 (G) Final Shut-In 595 Sampler _____
 (H) Final Hydrostatic 1318 Straddle _____ Ruined Shale Packer _____
 Shale Packer _____ Ruined Packer _____

Initial Open 30 Extra Packer _____ Extra Copies _____
 Initial Shut-In 30 Extra Recorder _____ Sub Total 0
 Final Flow 60 Day Standby _____ Total 1243
 Final Shut-In 60 Accessibility _____ MP/DST Disc't _____
 Sub Total 1243

Approved By _____ Our Representative RAY SCHWAGER Thank you

Trilobite Testing Inc. shall not be liable for damaged of any kind of the property or personnel of the one for whom a test is made, or for any loss suffered or sustained, directly or indirectly, through the use of its equipment, or its statements or opinion concerning the results of any test, tools lost or damaged in the hole shall be paid for at cost by the party for whom the test is made.



TRILOBITE TESTING INC.

1515 Commerce Parkway • Hays, Kansas 67601

Test Ticket

NO. 58827

4/10

Well Name & No. Krug A#1 Test No. 3 Date 7-10-14
 Company Prospect Oil & Gas Corp Elevation 1600 KB 1593 GL
 Address PO Box 837 Russell, Mo 67665-0837
 Co. Rep / Geo. Brad Hutchison Rig Royalrig2
 Location: Sec. 3 Twp. 13^s Rge. 14^w Co. Russell State Ks

Interval Tested 2820-2865 Zone Tested LKC F
 Anchor Length 45 Drill Pipe Run 2713 Mud Wt. 9
 Top Packer Depth 2815 Drill Collars Run - Vis 53
 Bottom Packer Depth 2820 Wt. Pipe Run - WL 8
 Total Depth 2865 Chlorides 3700 ppm System LCM -

Blow Description IFP - STRONG BLOW IN 2 MIN
ISIP - 2 1/2" BLOW BACK
FFP - STRONG BLOW IN 3 MIN
FSIP - 4" BLOW BACK

Rec	Feet of	%gas	%oil	%water	%mud
<u>1425</u>	<u>GIP</u>				
<u>560</u>	<u>CO</u>				
<u>186</u>	<u>GMO</u>	<u>40</u>	<u>50</u>		<u>10</u>
<u>124</u>	<u>WATER</u>				

Rec Total 870 BHT 9.5 Gravity 40 API RW .16 @ 65 ° F Chlorides 50000 ppm

(A) Initial Hydrostatic Test 1150 T-On Location 1405
 (B) First Initial Flow Jars T-Started 1420
 (C) First Final Flow Safety Joint T-Open 1525
 (D) Initial Shut-In Circ Sub T-Pulled 1825
 (E) Second Initial Flow Hourly Standby T-Out 2018

(F) Second Final Flow Mileage 60 RT 93 Comments Phillip loaded tools
 (G) Final Shut-In Sampler 7/11 @ 12:50 93.00

(H) Final Hydrostatic Straddle Ruined Shale Packer
 Shale Packer Ruined Packer
 Extra Packer Extra Copies

Initial Open 30
 Initial Shut-In 30
 Final Flow 60
 Final Shut-In 60

Sub Total 1243 Total 1243 +93.00
 MP/DST Disc't _____

Approved By _____ Our Representative Ray Schwager Thank you

Trilobite Testing Inc. shall not be liable for damaged of any kind of the property or personnel of the one for whom a test is made, or for any loss suffered or sustained, directly or indirectly, through the use of its equipment, or its statements or opinion concerning the results of any test, tools lost or damaged in the hole shall be paid for at cost by the party for whom the test is made.