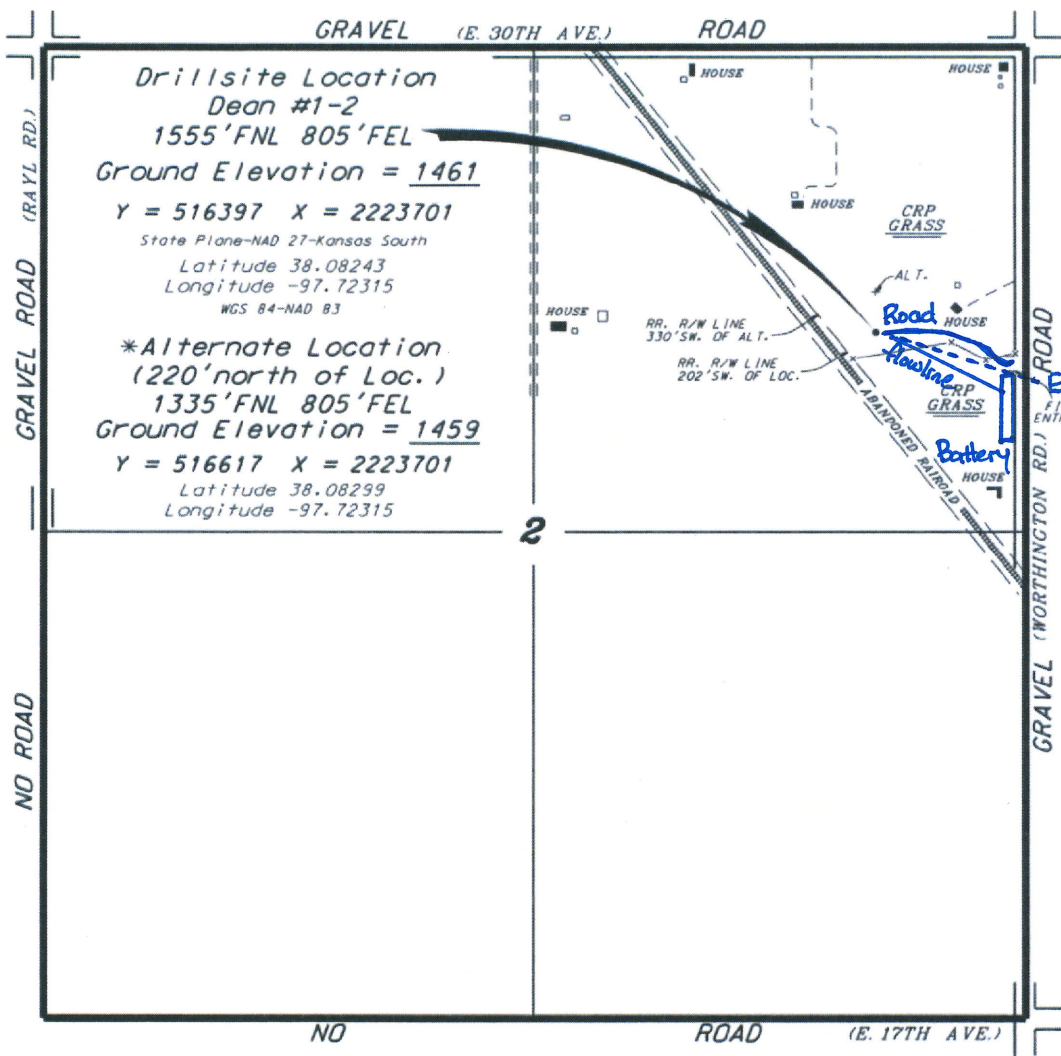


**BLUERIDGE PETROLEUM CORPORATION  
DEAN LEASE  
NE.1/4, SECTION 2, T23S, R4W  
RENO COUNTY, KANSAS**



**Drillsite Location  
Dean #1-2  
1555'FNL 805'FEL  
Ground Elevation = 1461  
Y = 516397 X = 2223701  
State Plane-NAD 27-Kansas South  
Latitude 38.08243  
Longitude -97.72315  
WGS 84-NAD 83**

**\*Alternate Location  
(220' north of Loc.)  
1335'FNL 805'FEL  
Ground Elevation = 1459  
Y = 516617 X = 2223701  
Latitude 38.08299  
Longitude -97.72315**

\*Ingress and egress to location as shown on this plat is per usage only and may not be legally opened for public use. Contact landowner, tenant and county road department for access.

SCALE 1" = 1000'  
C.K.S.M.

**LEGEND**

- Well Location
- Tank Battery Location
- Pipeline Location
- - - - Electric Line Location
- Lease Road Location

\* Controlling data is based upon the best maps and photographs available to us and upon a regular section of land containing 640 acres.  
\* Approximate section lines were determined using the normal standard of care of oilfield surveyors practicing in the state of Kansas. The section corners, which establish the precise section lines, were not necessarily located, and the exact location of the drillsite location in the section is not guaranteed. Therefore, the operator securing this service and accepting this plat and all other parties relying thereon agree to hold Central Kansas Oilfield Services, Inc., its officers and employees harmless from all losses, costs and expenses and said entities released from any liability from incidental or consequential damages.  
\* Elevations derived from National Geodetic Vertical Datum.

Date October 11, 2019