



**TEMPORARY ABANDONMENT WELL APPLICATION**

All blanks must be complete

OPERATOR: License# \_\_\_\_\_  
 Name: \_\_\_\_\_  
 Address 1: \_\_\_\_\_  
 Address 2: \_\_\_\_\_  
 City: \_\_\_\_\_ State: \_\_\_\_\_ Zip: \_\_\_\_\_ + \_\_\_\_\_  
 Contact Person: \_\_\_\_\_  
 Phone: ( \_\_\_\_\_ ) \_\_\_\_\_  
 Contact Person Email: \_\_\_\_\_  
 Field Contact Person: \_\_\_\_\_  
 Field Contact Person Phone: ( \_\_\_\_\_ ) \_\_\_\_\_

API No. 15- \_\_\_\_\_  
 Spot Description: \_\_\_\_\_  
 \_\_\_\_\_ - \_\_\_\_\_ - \_\_\_\_\_ - \_\_\_\_\_ Sec. \_\_\_\_\_ Twp. \_\_\_\_\_ S. R. \_\_\_\_\_  E  W  
 \_\_\_\_\_ feet from  N /  S Line of Section  
 \_\_\_\_\_ feet from  E /  W Line of Section  
 GPS Location: Lat: \_\_\_\_\_, Long: \_\_\_\_\_  
(e.g. xx.xxxxx) (e.g. -xxx.xxxxx)  
 Datum:  NAD27  NAD83  WGS84  
 County: \_\_\_\_\_ Elevation: \_\_\_\_\_  GL  KB  
 Lease Name: \_\_\_\_\_ Well #: \_\_\_\_\_  
 Well Type: (check one)  Oil  Gas  OG  WSW  Other: \_\_\_\_\_  
 SWD Permit #: \_\_\_\_\_  ENHR Permit #: \_\_\_\_\_  
 Gas Storage Permit #: \_\_\_\_\_  
 Spud Date: \_\_\_\_\_ Date Shut-In: \_\_\_\_\_

	Conductor	Surface	Production	Intermediate	Liner	Tubing
Size						
Setting Depth						
Amount of Cement						
Top of Cement						
Bottom of Cement						

Casing Fluid Level from Surface: \_\_\_\_\_ How Determined? \_\_\_\_\_ Date: \_\_\_\_\_  
 Casing Squeeze(s): \_\_\_\_\_ to \_\_\_\_\_ w / \_\_\_\_\_ sacks of cement, \_\_\_\_\_ to \_\_\_\_\_ w / \_\_\_\_\_ sacks of cement. Date: \_\_\_\_\_  
(top) (bottom) (top) (bottom)  
 Do you have a valid Oil & Gas Lease?  Yes  No  
 Depth and Type:  Junk in Hole at \_\_\_\_\_  Tools in Hole at \_\_\_\_\_ Casing Leaks:  Yes  No Depth of casing leak(s): \_\_\_\_\_  
(depth) (depth)  
 Type Completion:  ALT. I  ALT. II Depth of:  DV Tool: \_\_\_\_\_ w / \_\_\_\_\_ sacks of cement  Port Collar: \_\_\_\_\_ w / \_\_\_\_\_ sack of cement  
(depth) (depth)  
 Packer Type: \_\_\_\_\_ Size: \_\_\_\_\_ Inch Set at: \_\_\_\_\_ Feet  
 Total Depth: \_\_\_\_\_ Plug Back Depth: \_\_\_\_\_ Plug Back Method: \_\_\_\_\_

**Geological Data:**

Formation Name	Formation Top	Formation Base	Completion Information
1. _____	At: _____	to _____ Feet	Perforation Interval _____ to _____ Feet or Open Hole Interval _____ to _____ Feet
2. _____	At: _____	to _____ Feet	Perforation Interval _____ to _____ Feet or Open Hole Interval _____ to _____ Feet

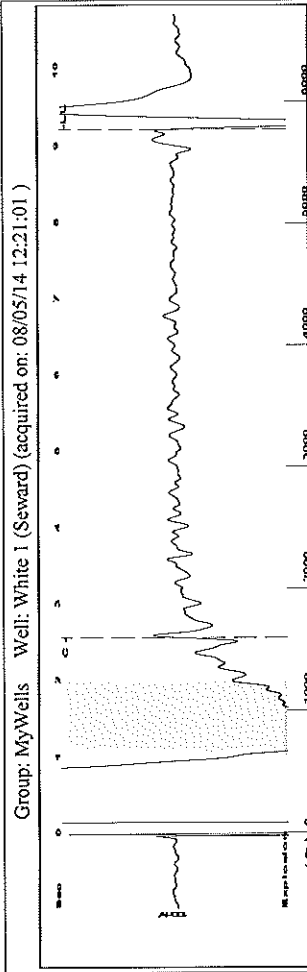
UNDER PENALTY OF PERJURY I HEREBY ATTEST THAT THE INFORMATION CONTAINED HEREIN IS TRUE AND CORRECT TO THE BEST OF MY KNOWLEDGE

Submitted Electronically

<b>Do NOT Write in This Space - KCC USE ONLY</b>	Date Tested: _____	Results: _____	Date Plugged: _____	Date Repaired: _____	Date Put Back in Service: _____
	Review Completed by: _____ Comments: _____				
TA Approved: <input type="checkbox"/> Yes <input type="checkbox"/> Denied Date: _____					

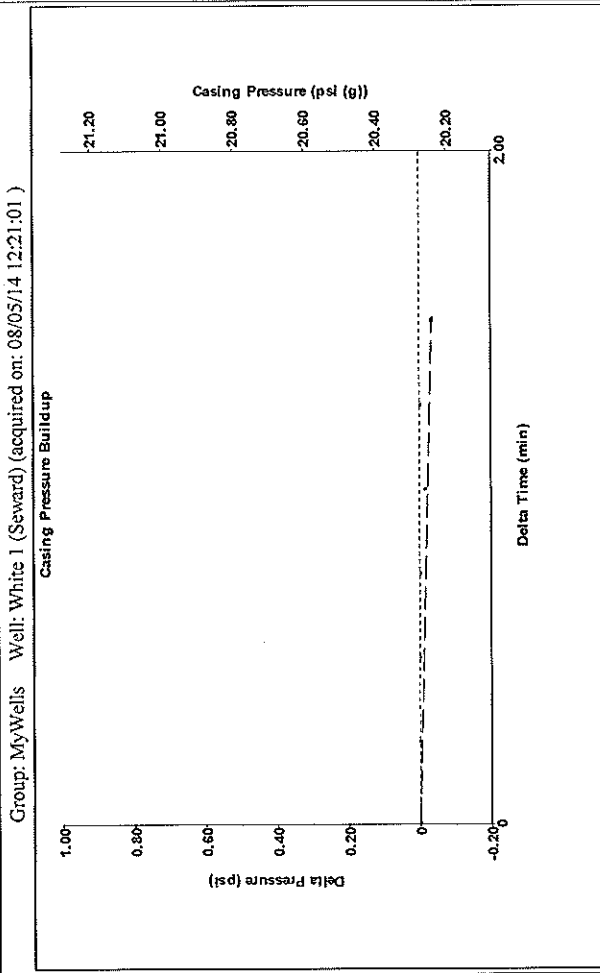
**Mail to the Appropriate KCC Conservation Office:**

	KCC District Office #1 - 210 E. Frontview, Suite A, Dodge City, KS 67801	Phone 620.225.8888
	KCC District Office #2 / UPGS - 3450 N. Rock Road, Building 600, Suite 601, Wichita, KS 67226	Phone 316.630.4000
	KCC District Office #3 - 1500 SW Seventh Steet, Chanute, KS 66720	Phone 620.432.2300
	KCC District Office #4 - 2301 E. 13th Street, Hays, KS 67601-2651	Phone 785.625.0550



Filter Type High Pass Automatic Collar Count Yes Time 9.219 sec  
 Manual Acoustic Velo 1221.58 ft/s Manual JTS/sec 19.2678 Joints 182.104 Jts  
 Depth 5772.69 ft

[ 1.0 to 2.0 (Sec) ]



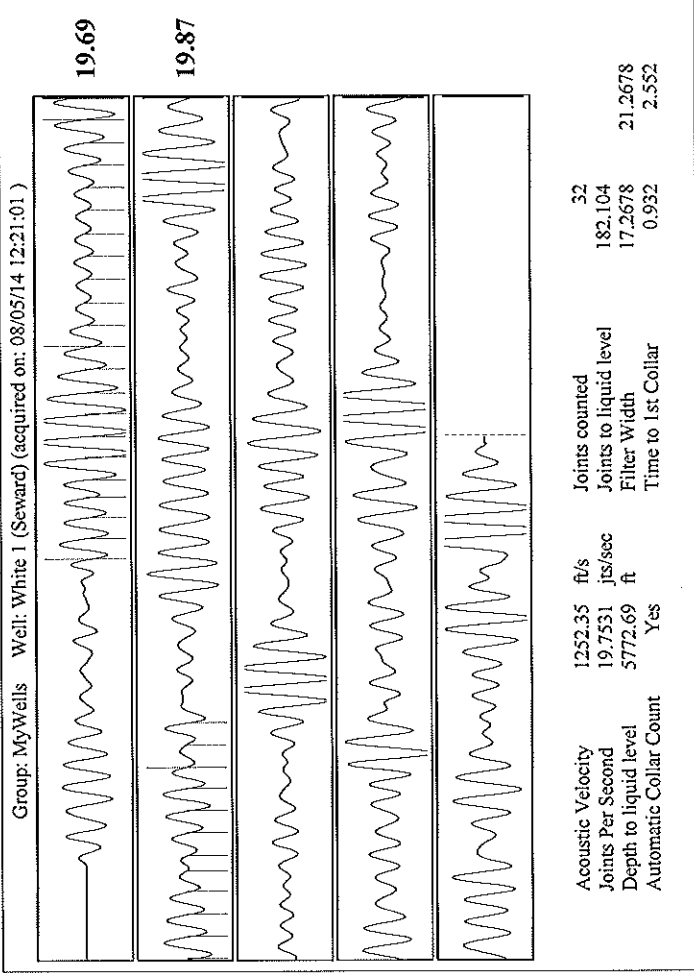
Change in Pressure -0.04 psi PTS720 Range  
 Change in Time 1.50 min

**Analysis Method: Automatic**

Group: MyWells Well: White 1 (Seward) (acquired on: 08/05/14 12:21:01)

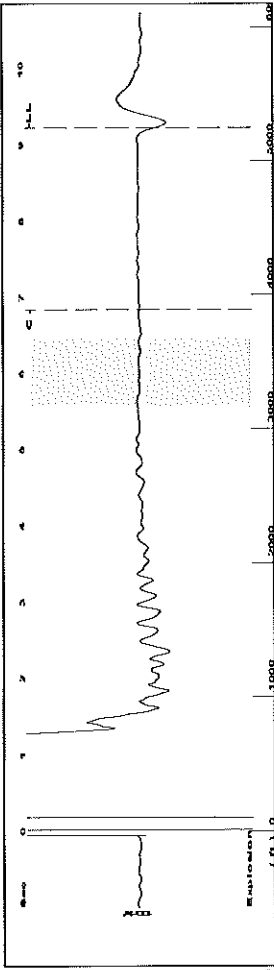
Production	Potential	Casing Pressure	Producing
Oil - * -	BBL/D	20.3 psi (g)	Annular
Water - * -	BBL/D	Casing Pressure Buildup	Gas Flow
Gas - * -	Mscf/D	-0.0 psi	% Liquid
IPR Method	Vogel	1.50 min	100 %
PBHP/SBHP	- * -	Gas/Liquid Interface Pressure	
Production Efficiency	0.0	25.7 psi (g)	
Oil 40 deg API		Liquid Level Depth	
Water 1.05 Sp.Gr.H2O		5772.69 ft	
Gas 0.75 Sp.Gr.AIR		Pump Intake Depth	
Acoustic Velocity	1252.35 ft/s	Formation Depth	
		5920.00 ft	
Formation Submergence			
Total Gaseous Liquid Column HT (TVDD)	147 ft		
Equivalent Gas Free Liquid HT (TVDD)	147 ft		
Acoustic Test			

Pump Intake - \* - psi (g)  
 Producing BHP 92.7 psi (g)  
 Static BHP - \* - psi (g)



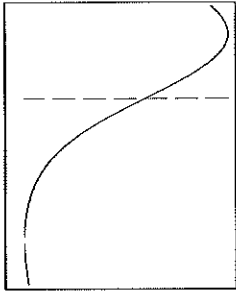
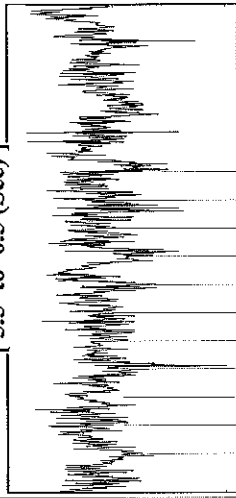
Acoustic Velocity 1252.35 ft/s Joints counted 32  
 Joints Per Second 19.7531 jts/sec Joints to liquid level 182.104  
 Depth to liquid level 5772.69 ft Filter Width 17.2678  
 Automatic Collar Count Yes Time to 1st Collar 0.932 2.552

Group: MyWells Well: Davies I (acquired on: 08/05/14 13:23:57)



Filter Type High Pass Automatic Collar Count Yes Time 9.233 sec  
 Manual Acoustic Velo 0.89 ft/s Manual JTS/sec 17.301 Joints 165,476 Jts  
 Depth 5245.59 ft

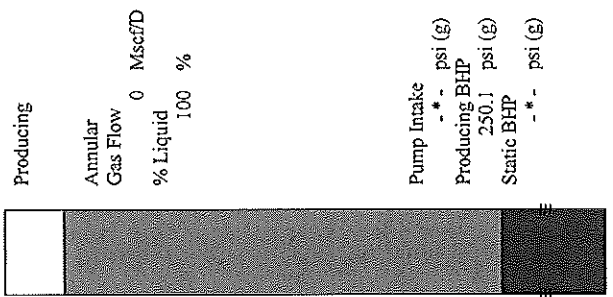
[ 5.5 to 6.5 (Sec) ]



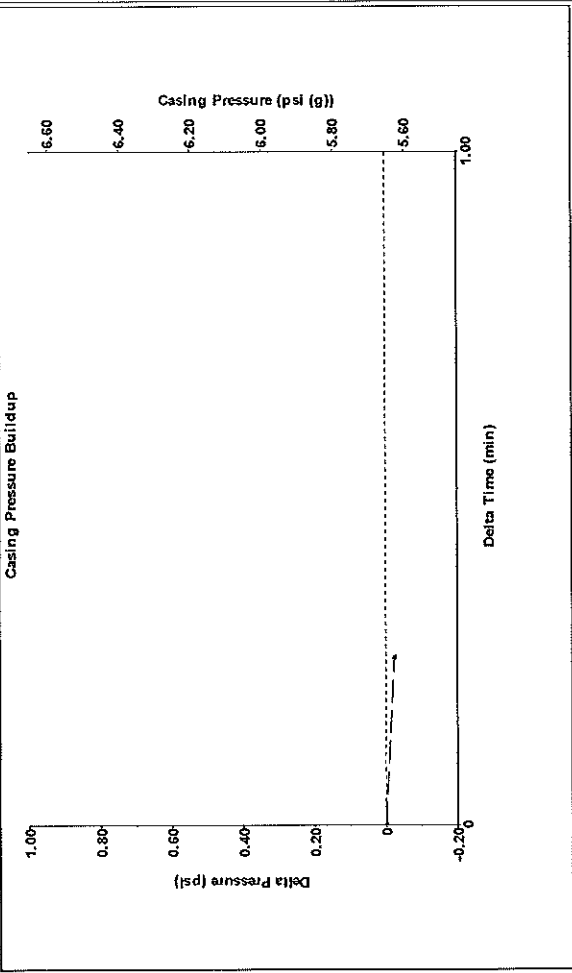
**Analysis Method: Automatic**

Group: MyWells Well: Davies I (acquired on: 08/05/14 13:23:57)

Production	Potential	Casing Pressure	5.7 psi (g)
Oil	- * - BBL/D	Casing Pressure Buildup	-0.0 psi
Water	- * - BBL/D		0.25 min
Gas	- * - Mscf/D	Gas/Liquid Interface Pressure	9.0 psi (g)
IPR Method	Vogel	Liquid Level Depth	
PBHP/SBHP	- * -	5245.59 ft	
Production Efficiency	0.0	Pump Intake Depth	
Oil	40 deg API	5776.00 ft	
Water	1.05 Sp.Gr.H2O		
Gas	0.86 Sp.Gr.AIR		
Acoustic Velocity	1136.27 ft/s		
Formation Submergence			
Total Gaseous Liquid Column HT (TVD)	530 ft		
Equivalent Gas Free Liquid HT (TVD)	530 ft		
Acoustic Test			

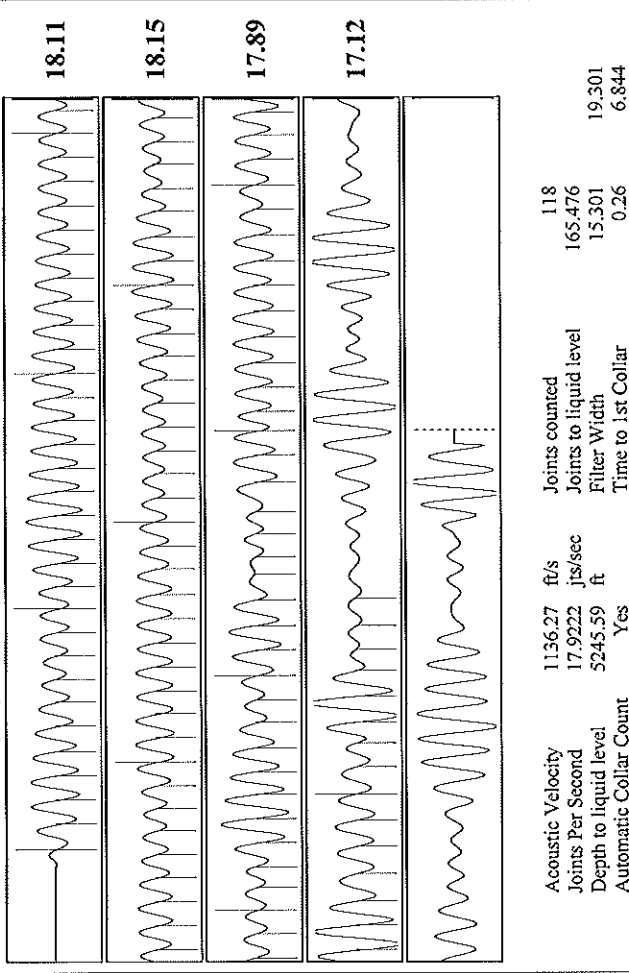


Group: MyWells Well: Davies I (acquired on: 08/05/14 13:23:57)



Change in Pressure -0.02 psi PT8720 Range 0 - ? psi  
 Change in Time 0.25 min

Group: MyWells Well: Davies I (acquired on: 08/05/14 13:23:57)



Acoustic Velocity	1136.27 ft/s	Joints counted	118
Joints Per Second	17.9222 jts/sec	Joints to liquid level	165,476
Depth to liquid level	5245.59 ft	Filter Width	15,301
Automatic Collar Count	Yes	Time to 1st Collar	6.844

Conservation Division  
District Office No. 1  
210 E. Frontview, Suite A  
Dodge City, KS 67801



Phone: 620-225-8888  
Fax: 620-225-8885  
<http://kcc.ks.gov/>

Shari Feist Albrecht, Chair  
Jay Scott Emler, Commissioner  
Pat Apple, Commissioner

Sam Brownback, Governor

August 14, 2014

Sarah Rodriguez  
Chesapeake Operating, Inc.  
6200 N WESTERN AVE  
PO BOX 18496  
OKLAHOMA CITY, OK 73118-1046

Re: Temporary Abandonment  
API 15-175-10184-00-00  
WHITE 1  
NW/4 Sec.02-35S-32W  
Seward County, Kansas

Dear Sarah Rodriguez:

Your application for Temporary Abandonment (TA) of the above-listed well is denied for the following reasons(s):

**Lack of Lease**

In accordance with K.A.R. 82-3-111, this well must be plugged or returned to service by September 13, 2014.

Sincerely,

Michael Maier