



TEMPORARY ABANDONMENT WELL APPLICATION

OPERATOR: License# _____
 Name: _____
 Address 1: _____
 Address 2: _____
 City: _____ State: _____ Zip: _____ + _____
 Contact Person: _____
 Phone: (_____) _____
 Contact Person Email: _____
 Field Contact Person: _____
 Field Contact Person Phone: (_____) _____

API No. 15- _____
 Spot Description: _____
 _____ - _____ - _____ - _____ Sec. _____ Twp. _____ S. R. _____ E W
 _____ feet from N / S Line of Section
 _____ feet from E / W Line of Section
 GPS Location: Lat: _____, Long: _____
(e.g. xx.xxxxx) (e.g. -xxx.xxxxx)
 Datum: NAD27 NAD83 WGS84
 County: _____ Elevation: _____ GL KB
 Lease Name: _____ Well #: _____
 Well Type: (check one) Oil Gas OG WSW Other: _____
 SWD Permit #: _____ ENHR Permit #: _____
 Gas Storage Permit #: _____
 Spud Date: _____ Date Shut-In: _____

	Conductor	Surface	Production	Intermediate	Liner	Tubing
Size						
Setting Depth						
Amount of Cement						
Top of Cement						
Bottom of Cement						

Casing Fluid Level from Surface: _____ How Determined? _____ Date: _____

Casing Squeeze(s): _____ to _____ w / _____ sacks of cement, _____ to _____ w / _____ sacks of cement. Date: _____
(top) (bottom) (top) (bottom)

Do you have a valid Oil & Gas Lease? Yes No

Depth and Type: Junk in Hole at _____ Tools in Hole at _____ Casing Leaks: Yes No Depth of casing leak(s): _____
(depth) (depth)

Type Completion: ALT. I ALT. II Depth of: DV Tool: _____ w / _____ sacks of cement Port Collar: _____ w / _____ sack of cement
(depth) (depth)

Packer Type: _____ Size: _____ Inch Set at: _____ Feet

Total Depth: _____ Plug Back Depth: _____ Plug Back Method: _____

Geological Data:

Formation Name	Formation Top	Formation Base	Completion Information
1. _____	At: _____	to _____ Feet	Perforation Interval _____ to _____ Feet or Open Hole Interval _____ to _____ Feet
2. _____	At: _____	to _____ Feet	Perforation Interval _____ to _____ Feet or Open Hole Interval _____ to _____ Feet

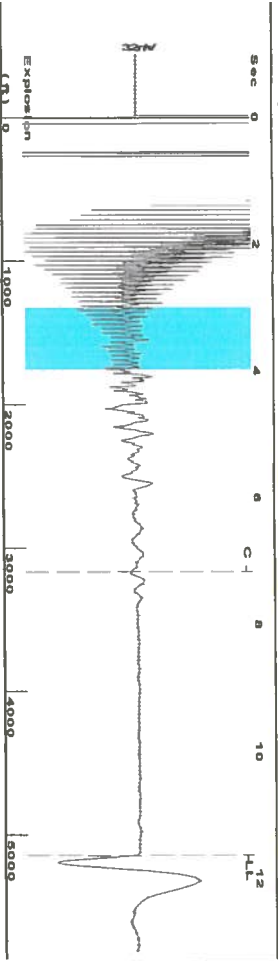
~~UNDER PENALTY OF PERJURY I HEREBY ATTEST THAT THE INFORMATION CONTAINED HEREIN IS TRUE AND CORRECT TO THE BEST OF MY KNOWLEDGE~~

Submitted Electronically

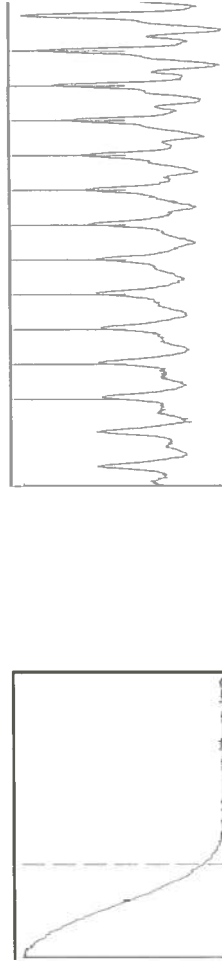
Do NOT Write in This Space - KCC USE ONLY	Date Tested: _____	Results: _____	Date Plugged: _____	Date Repaired: _____	Date Put Back in Service: _____
	Review Completed by: _____ Comments: _____				
TA Approved: <input type="checkbox"/> Yes <input type="checkbox"/> Denied Date: _____					

Mail to the Appropriate KCC Conservation Office:

	KCC District Office #1 - 210 E. Frontview, Suite A, Dodge City, KS 67801	Phone 620.225.8888
	KCC District Office #2 / UPGS - 3450 N. Rock Road, Building 600, Suite 601, Wichita, KS 67226	Phone 316.630.4000
	KCC District Office #3 - 1500 SW Seventh Steet, Chanute, KS 66720	Phone 620.432.2300
	KCC District Office #4 - 2301 E. 13th Street, Hays, KS 67601-2651	Phone 785.625.0550



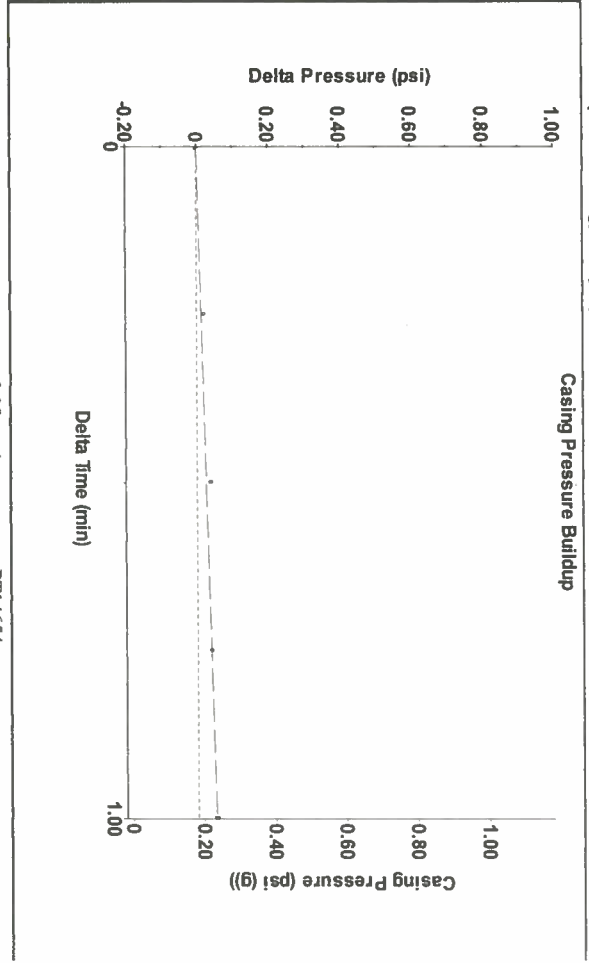
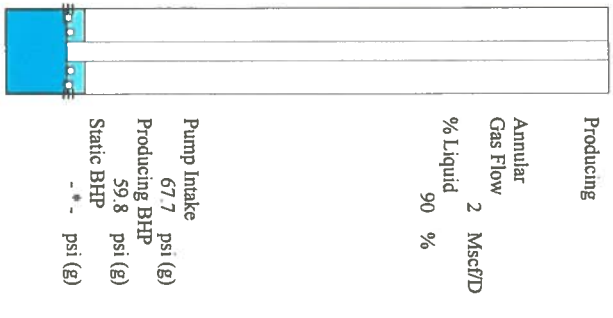
Filter Type High Pass Automatic Collar Count Yes
 Manual Acoustic Velocity 201 f/s Manual JTS/sec 14.0252
 Time 11.628 sec
 Joints 162.157 Jts
 Depth 5140.37 ft



Analysis Method: Automatic

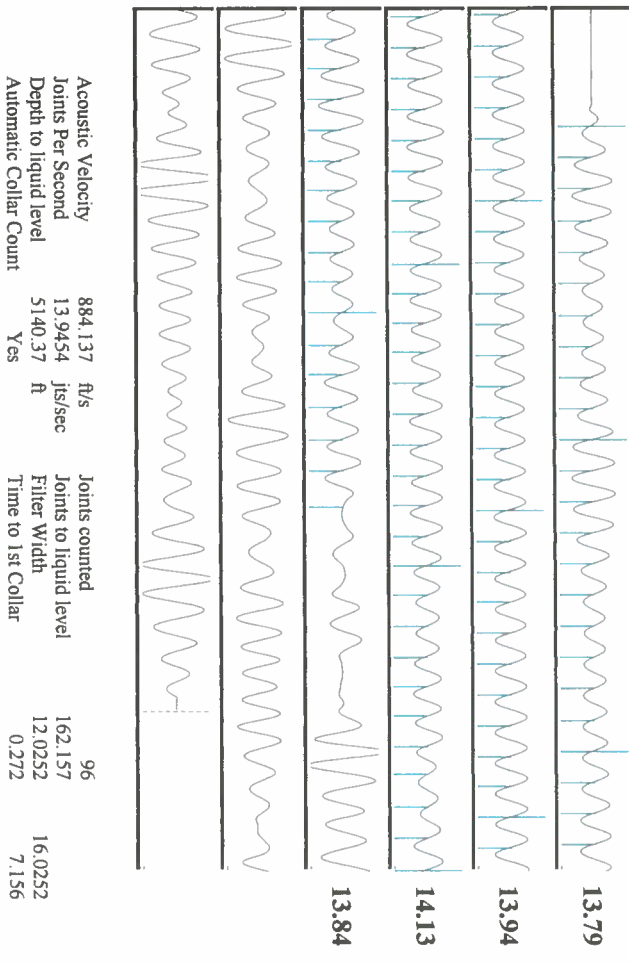
Group: Merit Energy Company-Ulysses Well: HJV Reed B-2 (acquired on: 08/13/14 15:28:23)

Production	Potential	Casing Pressure	Producing
Current	Oil * - * - BBL/D	0.2 psi (g)	Annular
Oil * - * -	Water * - * - BBL/D	Casing Pressure Buildup	Gas Flow
Water * - * -	Gas * - * - Mscf/D	0.052 psi	2 Mscf/D
Gas * - * -		1.00 min	% Liquid
IPR Method	Vogel	Gas/Liquid Interface Pressure	90 %
PBHP/SBHP	0.0	3.2 psi (g)	
Production Efficiency		Liquid Level Depth	
		5140.37 ft	
Oil 40 deg API		Pump Intake Depth	
Water 1.05 Sp.Gr:H2O		5347.00 ft	
Gas 1.09 Sp.Gr:AIR		Formation Depth	
Acoustic Velocity	884.137 ft/s	5324.00 ft	
Formation Submergence		207 ft	
Total Gaseous Liquid Column HT (TVD)		187 ft	
Equivalent Gas Free Liquid HT (TVD)			
Acoustic Test			
Tim Frydendall-Fluid Level Technician			



Change in Pressure 0.05 psi PT14654
 Change in Time 1.00 min Range 0 - ? psi

Group: Merit Energy Company-Ulysses Well: HJV Reed B-2 (acquired on: 08/13/14 15:28:23)



Annular Gas Flow	13.79
Gas Flow	13.94
% Liquid	14.13
Pump Intake	13.84
Producing BHP	13.79
Acoustic Velocity	884.137 ft/s
Joints Per Second	13.9454 Jts/sec
Depth to liquid level	5140.37 ft
Automatic Collar Count	Yes
Joints counted	96
Joints to liquid level	162.157
Filter Width	12.0252
Time to 1st Collar	0.272
	7.156

Conservation Division
District Office No. 1
210 E. Frontview, Suite A
Dodge City, KS 67801



Phone: 620-225-8888
Fax: 620-225-8885
<http://kcc.ks.gov/>

Shari Feist Albrecht, Chair
Jay Scott Emler, Commissioner
Pat Apple, Commissioner

Sam Brownback, Governor

August 19, 2014

Ross King
Merit Energy Company, LLC
13727 NOEL RD STE 1200
DALLAS, TX 75240

Re: Temporary Abandonment
API 15-067-21481-00-00
HJV REED B 2
SW/4 Sec.01-30S-35W
Grant County, Kansas

Dear Ross King:

"Your temporary abandonment (TA) application for the well listed above has been approved. In accordance with K.A.R. 82-3-111 the TA status of this well will expire 08/19/2015.

- * If you return this well to service or plug it, please notify the District Office.
- * If you sell this well you are required to file a Transfer of Operator form, T-1.
- * If the well will remain temporarily abandoned, you must submit a new TA application, CP-111, before 08/19/2015.

You may contact me at the number above if you have questions.

Very truly yours,

Steve Pfeifer"