



Confidentiality Requested:

Yes No

KANSAS CORPORATION COMMISSION 1218408
OIL & GAS CONSERVATION DIVISION

Form ACO-1

August 2013

Form must be Typed
Form must be Signed
All blanks must be Filled

WELL COMPLETION FORM
WELL HISTORY - DESCRIPTION OF WELL & LEASE

OPERATOR: License # _____

Name: _____

Address 1: _____

Address 2: _____

City: _____ State: _____ Zip: _____ + _____

Contact Person: _____

Phone: (_____) _____

CONTRACTOR: License # _____

Name: _____

Wellsite Geologist: _____

Purchaser: _____

Designate Type of Completion:

- New Well Re-Entry Workover
- Oil WSW SWD SIOW
- Gas D&A ENHR SIGW
- OG GSW Temp. Abd.
- CM (Coal Bed Methane)
- Cathodic Other (Core, Expl., etc.): _____

If Workover/Re-entry: Old Well Info as follows:

Operator: _____

Well Name: _____

Original Comp. Date: _____ Original Total Depth: _____

- Deepening Re-perf. Conv. to ENHR Conv. to SWD
- Plug Back Conv. to GSW Conv. to Producer
- Commingled Permit #: _____
- Dual Completion Permit #: _____
- SWD Permit #: _____
- ENHR Permit #: _____
- GSW Permit #: _____

Spud Date or Recompletion Date	Date Reached TD	Completion Date or Recompletion Date
-----------------------------------	-----------------	---

API No. 15 - _____

Spot Description: _____

_____ - _____ - _____ Sec. _____ Twp. _____ S. R. _____ East West

_____ Feet from North / South Line of Section

_____ Feet from East / West Line of Section

Footages Calculated from Nearest Outside Section Corner:

- NE NW SE SW

GPS Location: Lat: _____, Long: _____
(e.g. xx.xxxxx) (e.g. -xxx.xxxxx)

Datum: NAD27 NAD83 WGS84

County: _____

Lease Name: _____ Well #: _____

Field Name: _____

Producing Formation: _____

Elevation: Ground: _____ Kelly Bushing: _____

Total Vertical Depth: _____ Plug Back Total Depth: _____

Amount of Surface Pipe Set and Cemented at: _____ Feet

Multiple Stage Cementing Collar Used? Yes No

If yes, show depth set: _____ Feet

If Alternate II completion, cement circulated from: _____

feet depth to: _____ w/ _____ sx cmt.

Drilling Fluid Management Plan

(Data must be collected from the Reserve Pit)

Chloride content: _____ ppm Fluid volume: _____ bbls

Dewatering method used: _____

Location of fluid disposal if hauled offsite:

Operator Name: _____

Lease Name: _____ License #: _____

Quarter _____ Sec. _____ Twp. _____ S. R. _____ East West

County: _____ Permit #: _____

AFFIDAVIT

I am the affiant and I hereby certify that all requirements of the statutes, rules and regulations promulgated to regulate the oil and gas industry have been fully complied with and the statements herein are complete and correct to the best of my knowledge.

Submitted Electronically

KCC Office Use ONLY

- Confidentiality Requested
Date: _____
- Confidential Release Date: _____
- Wireline Log Received
- Geologist Report Received
- UIC Distribution
- ALT I II III Approved by: _____ Date: _____

1218408

Operator Name: _____ Lease Name: _____ Well #: _____

Sec. _____ Twp. _____ S. R. _____ East West County: _____

INSTRUCTIONS: Show important tops of formations penetrated. Detail all cores. Report all final copies of drill stems tests giving interval tested, time tool open and closed, flowing and shut-in pressures, whether shut-in pressure reached static level, hydrostatic pressures, bottom hole temperature, fluid recovery, and flow rates if gas to surface test, along with final chart(s). Attach extra sheet if more space is needed.

Final Radioactivity Log, Final Logs run to obtain Geophysical Data and Final Electric Logs must be emailed to kcc-well-logs@kcc.ks.gov. Digital electronic log files must be submitted in LAS version 2.0 or newer AND an image file (TIFF or PDF).

Drill Stem Tests Taken <i>(Attach Additional Sheets)</i>	<input type="checkbox"/> Yes <input type="checkbox"/> No	<input type="checkbox"/> Log	Formation (Top), Depth and Datum	<input type="checkbox"/> Sample
Samples Sent to Geological Survey	<input type="checkbox"/> Yes <input type="checkbox"/> No	Name	Top	Datum
Cores Taken	<input type="checkbox"/> Yes <input type="checkbox"/> No			
Electric Log Run	<input type="checkbox"/> Yes <input type="checkbox"/> No			
List All E. Logs Run:				

CASING RECORD <input type="checkbox"/> New <input type="checkbox"/> Used							
Report all strings set-conductor, surface, intermediate, production, etc.							
Purpose of String	Size Hole Drilled	Size Casing Set (In O.D.)	Weight Lbs. / Ft.	Setting Depth	Type of Cement	# Sacks Used	Type and Percent Additives

ADDITIONAL CEMENTING / SQUEEZE RECORD				
Purpose:	Depth Top Bottom	Type of Cement	# Sacks Used	Type and Percent Additives
<input type="checkbox"/> Perforate				
<input type="checkbox"/> Protect Casing				
<input type="checkbox"/> Plug Back TD				
<input type="checkbox"/> Plug Off Zone				

Did you perform a hydraulic fracturing treatment on this well? Yes No *(If No, skip questions 2 and 3)*

Does the volume of the total base fluid of the hydraulic fracturing treatment exceed 350,000 gallons? Yes No *(If No, skip question 3)*

Was the hydraulic fracturing treatment information submitted to the chemical disclosure registry? Yes No *(If No, fill out Page Three of the ACO-1)*

Shots Per Foot	PERFORATION RECORD - Bridge Plugs Set/Type Specify Footage of Each Interval Perforated	Acid, Fracture, Shot, Cement Squeeze Record <i>(Amount and Kind of Material Used)</i>	Depth

TUBING RECORD: Size: _____ Set At: _____ Packer At: _____ Liner Run: Yes No

Date of First, Resumed Production, SWD or ENHR: _____ Producing Method: Flowing Pumping Gas Lift Other *(Explain)* _____

Estimated Production Per 24 Hours	Oil Bbls.	Gas Mcf	Water Bbls.	Gas-Oil Ratio	Gravity

DISPOSITION OF GAS: <input type="checkbox"/> Vented <input type="checkbox"/> Sold <input type="checkbox"/> Used on Lease <i>(If vented, Submit ACO-18.)</i>	METHOD OF COMPLETION: <input type="checkbox"/> Open Hole <input type="checkbox"/> Perf. <input type="checkbox"/> Dually Comp. <input type="checkbox"/> Commingled <i>(Submit ACO-5)</i> <input type="checkbox"/> Other <i>(Specify)</i> _____	PRODUCTION INTERVAL: _____ _____
--	---	---

Form	ACO1 - Well Completion
Operator	Stelbar Oil Corporation, Inc.
Well Name	SCHRODER 1-15
Doc ID	1218408

All Electric Logs Run

Compact Photo Density Compensated Neutron Microresistivity Log
Array Induction Shallow Focused Electric Log
Compensated Sonic w/Integrated Transit Time Log
Compensated Neutron Sonic Porosity Overlay Log
Microresistivity Log

Form	ACO1 - Well Completion
Operator	Stelbar Oil Corporation, Inc.
Well Name	SCHRODER 1-15
Doc ID	1218408

Tops

Name	Top	Datum
B/Anhydrite	2368	+639
Heebner	3925	-918
Lansing	3968	-961
Mun Crk Sh	4145	-1138
Stark Sh	4245	-1238
Hush Sh	4293	-1286
Marmaton	4384	-1377
Pawnee	4468	-1461
Cher Sh	4514	-1539
Lwr Ck Sh	4546	-1539
John Zone	4582	-1575
Morrow Sh	4658	-1651
Miss	4698	-1691



DRILL STEM TEST REPORT

Prepared For: **Stelbar Oil Corp. Inc**

1625 N Waterfront PKWY
Wichita KS. 67206

ATTN: David Gould

Schroder #1-15

15-17s-33w Scott,KS

Start Date: 2014.07.13 @ 06:02:00

End Date: 2014.07.13 @ 09:19:40

Job Ticket #: 57704 DST #: 1

Trilobite Testing, Inc
PO Box 362 Hays, KS 67601
ph: 785-625-4778 fax: 785-625-5620

Printed: 2014.07.17 @ 15:53:39



TRILOBITE TESTING, INC

DRILL STEM TEST REPORT

Stelbar Oil Corp. Inc
 1625 N Waterfront PKWY
 Wichita KS. 67206
 ATTN: David Gould

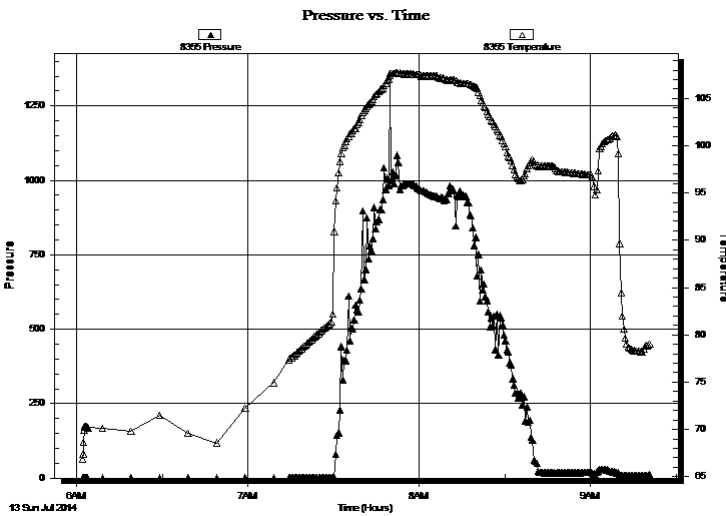
15-17s-33w Scott,KS
Schroder #1-15
 Job Ticket: 57704 **DST#: 1**
 Test Start: 2014.07.13 @ 06:02:00

GENERAL INFORMATION:

Formation: **Marmaton**
 Deviated: No Whipstock: ft (KB)
 Time Tool Opened:
 Time Test Ended: 09:19:40
 Interval: **4379.00 ft (KB) To 4426.00 ft (KB) (TVD)**
 Total Depth: 4426.00 ft (KB) (TVD)
 Hole Diameter: 7.88 inches Hole Condition: Fair
 Test Type: Conventional Bottom Hole (Initial)
 Tester: Will MacLean
 Unit No: 72
 Reference Elevations: 3007.00 ft (KB)
 2996.00 ft (CF)
 KB to GR/CF: 11.00 ft

Serial #: 8355 Outside
 Press@RunDepth: psig @ 4383.00 ft (KB) Capacity: 8000.00 psig
 Start Date: 2014.07.13 End Date: 2014.07.13 Last Calib.: 2014.07.13
 Start Time: 06:02:05 End Time: 09:20:45 Time On Btm:
 Time Off Btm:

TEST COMMENT: Hit a Bridge around 2540' Pushed thru it Hit another one in about 5' got thru it and Hit another Bridge Then came OOH w ith the Tool



PRESSURE SUMMARY

Time (Min.)	Pressure (psig)	Temp (deg F)	Annotation

Recovery

Length (ft)	Description	Volume (bbl)

Gas Rates

	Choke (inches)	Pressure (psig)	Gas Rate (Mcf/d)



**TRILOBITE
TESTING, INC.**

DRILL STEM TEST REPORT

TOOL DIAGRAM

Stelbar Oil Corp. Inc

15-17s-33w Scott,KS

1625 N Waterfront PKWY
Wichita KS. 67206

Schroder #1-15

Job Ticket: 57704

DST#: 1

ATTN: David Gould

Test Start: 2014.07.13 @ 06:02:00

Tool Information

Drill Pipe:	Length:	ft	Diameter:	3.80 inches	Volume:	- bbl	Tool Weight:	2500.00 lb
Heavy Wt. Pipe:	Length:	0.00 ft	Diameter:	0.00 inches	Volume:	0.00 bbl	Weight set on Packer:	40000.00 lb
Drill Collar:	Length:	247.00 ft	Diameter:	2.25 inches	Volume:	1.21 bbl	Weight to Pull Loose:	lb
					Total Volume:	- bbl	Tool Chased	ft
Drill Pipe Above KB:	-4103.00 ft						String Weight: Initial	40000.00 lb
Depth to Top Packer:	4379.00 ft						Final	lb
Depth to Bottom Packer:	ft							
Interval between Packers:	47.00 ft							
Tool Length:	76.00 ft							
Number of Packers:	2		Diameter:	6.75 inches				
Tool Comments:								

Tool Description

Tool Description	Length (ft)	Serial No.	Position	Depth (ft)	Accum. Lengths
Change Over Sub	1.00			4351.00	
Shut In Tool	5.00			4356.00	
Sampler	2.00			4358.00	
Hydraulic tool	5.00			4363.00	
Jars	5.00			4368.00	
Safety Joint	2.00			4370.00	
Packer	5.00			4375.00	29.00 Bottom Of Top Packer
Packer	4.00			4379.00	
Stubb	1.00			4380.00	
Perforations	3.00			4383.00	
Recorder	0.00	8355	Outside	4383.00	
Recorder	0.00	8674	Inside	4383.00	
Perforations	5.00			4388.00	
Change Over Sub	1.00			4389.00	
Drill Pipe	31.00			4420.00	
Change Over Sub	1.00			4421.00	
Bullnose	5.00			4426.00	47.00 Bottom Packers & Anchor
Total Tool Length:	76.00				



**TRILOBITE
TESTING, INC**

DRILL STEM TEST REPORT

FLUID SUMMARY

Stelbar Oil Corp. Inc

15-17s-33w Scott,KS

1625 N Waterfront PKWY
Wichita KS. 67206

Schroder #1-15

Job Ticket: 57704

DST#: 1

ATTN: David Gould

Test Start: 2014.07.13 @ 06:02:00

Mud and Cushion Information

Mud Type: Gel Chem

Cushion Type:

Oil API:

deg API

Mud Weight: 9.00 lb/gal

Cushion Length:

ft

Water Salinity:

ppm

Viscosity: 47.00 sec/qt

Cushion Volume:

bbbl

Water Loss: 8.74 in³

Gas Cushion Type:

Resistivity: ohm.m

Gas Cushion Pressure:

psig

Salinity: 3500.00 ppm

Filter Cake: 1.00 inches

Recovery Information

Recovery Table

Length ft	Description	Volume bbbl

Total Length: ft

Total Volume: bbl

Num Fluid Samples: 0

Num Gas Bombs: 0

Serial #:

Laboratory Name:

Laboratory Location:

Recovery Comments:

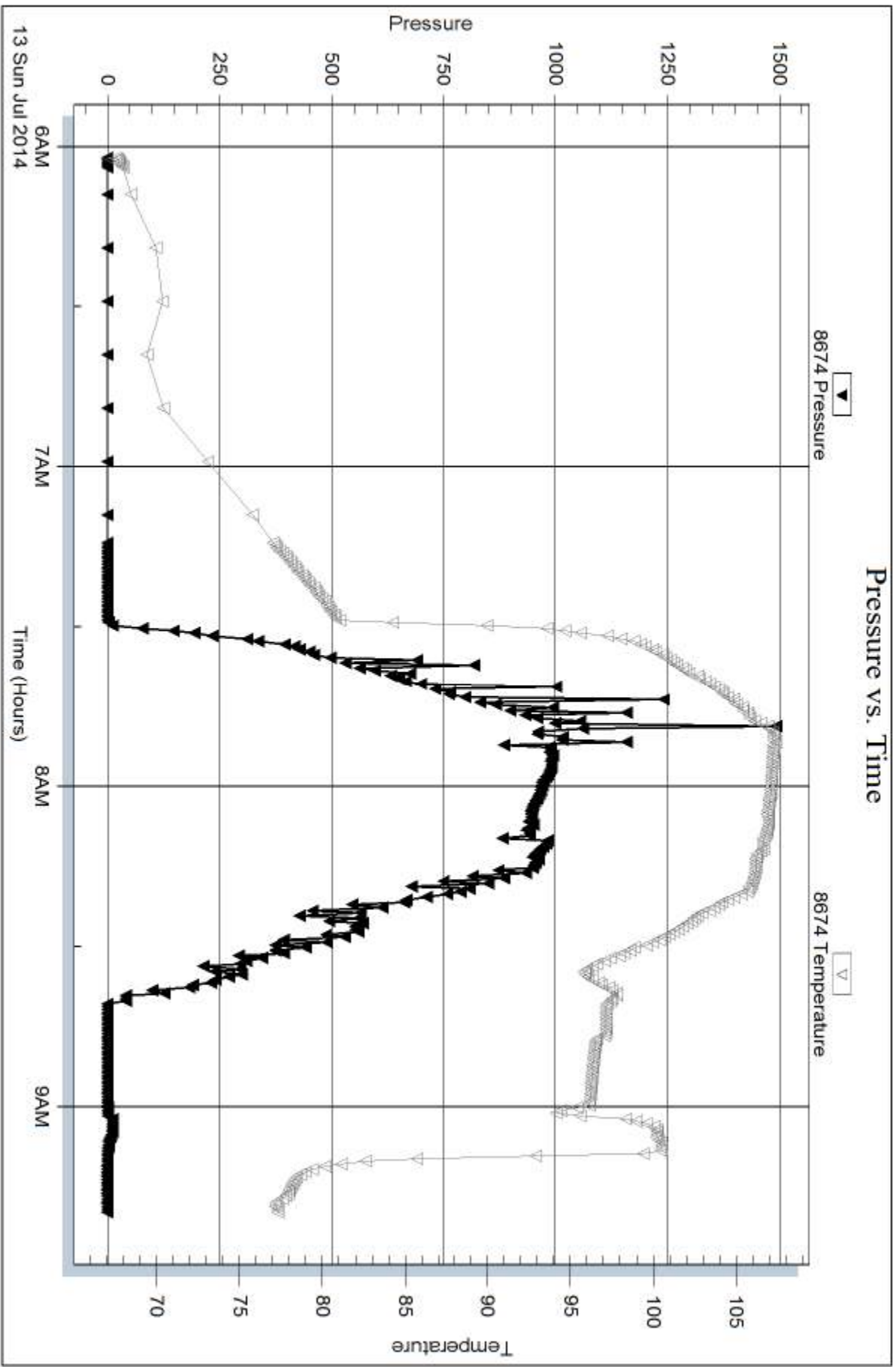
Serial #: 8674

Inside

Stelbar Oil Corp. Inc

Schroder #1-15

DST Test Number: 1

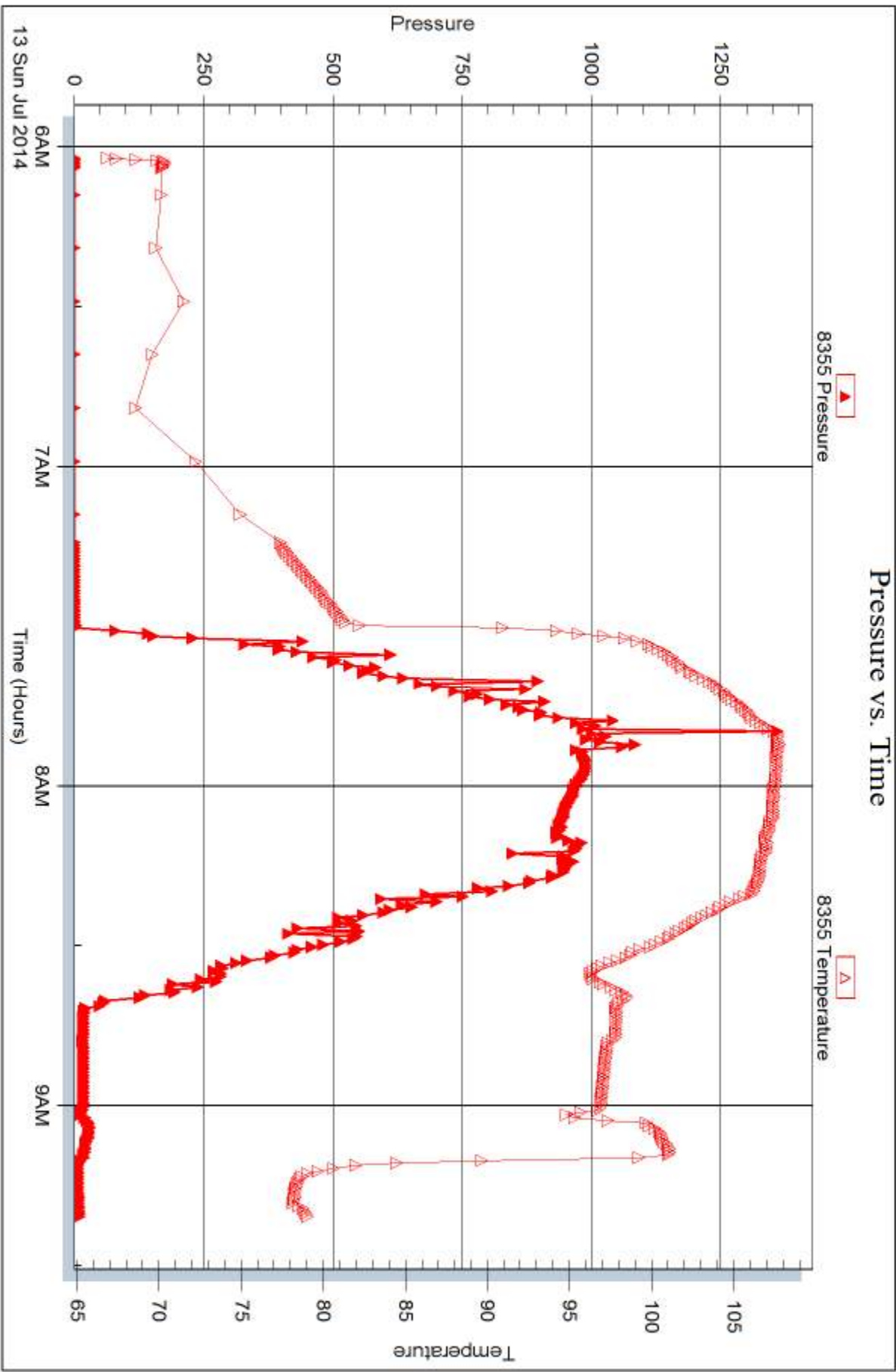


Serial #: 8355

Outside Stellar Oil Corp. Inc

Schroder #1-15

DST Test Number: 1





DRILL STEM TEST REPORT

Prepared For: **Stelbar Oil Corp. Inc**

1625 N Waterfront PKWY
Wichita KS. 67206

ATTN: David Gould

Schroder #1-15

15-17s-33w Scott,KS

Start Date: 2014.07.13 @ 16:00:00

End Date: 2014.07.13 @ 22:37:24

Job Ticket #: 57705 DST #: 2

Trilobite Testing, Inc

PO Box 362 Hays, KS 67601

ph: 785-625-4778 fax: 785-625-5620

Printed: 2014.07.17 @ 15:53:16



**TRILOBITE
TESTING, INC**

DRILL STEM TEST REPORT

Stelbar Oil Corp. Inc
1625 N Waterfront PKWY
Wichita KS. 67206
ATTN: David Gould

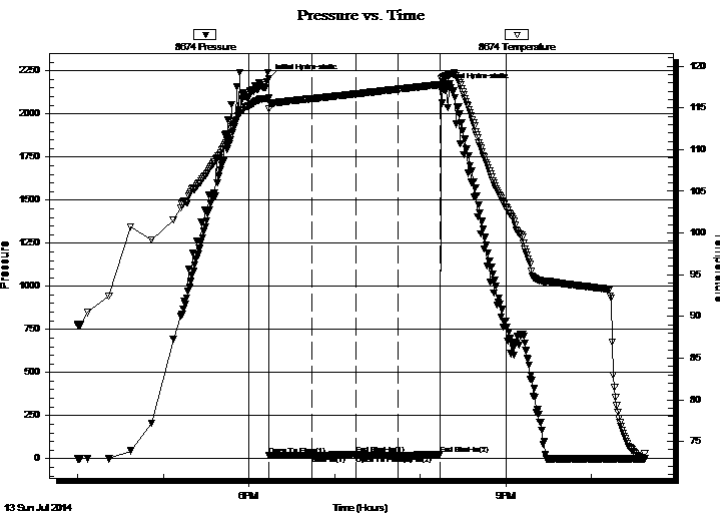
15-17s-33w Scott,KS
Schroder #1-15
Job Ticket: 57705 **DST#: 2**
Test Start: 2014.07.13 @ 16:00:00

GENERAL INFORMATION:

Formation: **Marmaton**
Deviated: No Whipstock: ft (KB)
Time Tool Opened: 18:14:10
Time Test Ended: 22:37:24
Interval: **4379.00 ft (KB) To 4426.00 ft (KB) (TVD)**
Total Depth: 4426.00 ft (KB) (TVD)
Hole Diameter: 7.88 inches Hole Condition: Good
Test Type: Conventional Bottom Hole (Reset)
Tester: Will MacLean
Unit No: 72
Reference Elevations: 3007.00 ft (KB)
2996.00 ft (CF)
KB to GR/CF: 11.00 ft

Serial #: 8674 Inside
Press@RunDepth: 20.11 psig @ 4383.00 ft (KB) Capacity: 8000.00 psig
Start Date: 2014.07.13 End Date: 2014.07.13 Last Calib.: 2014.07.13
Start Time: 16:00:00 End Time: 22:37:24 Time On Btm: 2014.07.13 @ 18:13:55
Time Off Btm: 2014.07.13 @ 20:14:55

TEST COMMENT: IF- Weak Surface Blow Died in 14 min
IS- No Blow
FF- No Blow
FS- No Blow



PRESSURE SUMMARY

Time (Min.)	Pressure (psig)	Temp (deg F)	Annotation
0	2206.52	116.18	Initial Hydro-static
1	17.54	114.96	Open To Flow (1)
31	19.60	116.12	Shut-In(1)
61	25.56	116.68	End Shut-In(1)
61	18.72	116.68	Open To Flow (2)
91	20.11	117.25	Shut-In(2)
121	24.20	117.81	End Shut-In(2)
121	2150.94	118.54	Final Hydro-static

Recovery

Length (ft)	Description	Volume (bbl)
2.00	WCM 2%w 98%m	0.01

* Recovery from multiple tests

Gas Rates

Choke (inches)	Pressure (psig)	Gas Rate (Mcf/d)



**TRILOBITE
TESTING, INC**

DRILL STEM TEST REPORT

TOOL DIAGRAM

Stelbar Oil Corp. Inc

15-17s-33w Scott,KS

1625 N Waterfront PKWY
Wichita KS. 67206

Schroder #1-15

Job Ticket: 57705

DST#: 2

ATTN: David Gould

Test Start: 2014.07.13 @ 16:00:00

Tool Information

Drill Pipe:	Length: 4111.00 ft	Diameter: 3.80 inches	Volume: 57.67 bbl	Tool Weight: 2500.00 lb
Heavy Wt. Pipe:	Length: 0.00 ft	Diameter: 0.00 inches	Volume: 0.00 bbl	Weight set on Packer: 28000.00 lb
Drill Collar:	Length: 247.00 ft	Diameter: 2.25 inches	Volume: 1.21 bbl	Weight to Pull Loose: 14000.00 lb
			<u>Total Volume: 58.88 bbl</u>	Tool Chased ft
Drill Pipe Above KB:	8.00 ft			String Weight: Initial 76000.00 lb
Depth to Top Packer:	4379.00 ft			Final 76000.00 lb
Depth to Bottom Packer:	ft			
Interval between Packers:	47.00 ft			
Tool Length:	76.00 ft			
Number of Packers:	2	Diameter: 6.75 inches		

Tool Comments:

Tool Description

Tool Description	Length (ft)	Serial No.	Position	Depth (ft)	Accum. Lengths
Change Over Sub	1.00			4351.00	
Shut In Tool	5.00			4356.00	
Sampler	2.00			4358.00	
Hydraulic tool	5.00			4363.00	
Jars	5.00			4368.00	
Safety Joint	2.00			4370.00	
Packer	5.00			4375.00	29.00 Bottom Of Top Packer
Packer	4.00			4379.00	
Stubb	1.00			4380.00	
Perforations	3.00			4383.00	
Recorder	0.00	8355	Outside	4383.00	
Recorder	0.00	8674	Inside	4383.00	
Perforations	5.00			4388.00	
Change Over Sub	1.00			4389.00	
Drill Pipe	31.00			4420.00	
Change Over Sub	1.00			4421.00	
Bullnose	5.00			4426.00	47.00 Bottom Packers & Anchor
Total Tool Length:	76.00				



**TRILOBITE
TESTING, INC**

DRILL STEM TEST REPORT

FLUID SUMMARY

Stelbar Oil Corp. Inc

15-17s-33w Scott,KS

1625 N Waterfront PKWY
Wichita KS. 67206

Schroder #1-15

Job Ticket: 57705

DST#: 2

ATTN: David Gould

Test Start: 2014.07.13 @ 16:00:00

Mud and Cushion Information

Mud Type: Gel Chem

Cushion Type:

Oil API:

deg API

Mud Weight: 9.00 lb/gal

Cushion Length:

ft

Water Salinity:

ppm

Viscosity: 51.00 sec/qt

Cushion Volume:

bbbl

Water Loss: 7.95 in³

Gas Cushion Type:

Resistivity: ohm.m

Gas Cushion Pressure:

psig

Salinity: 4400.00 ppm

Filter Cake: 1.00 inches

Recovery Information

Recovery Table

Length ft	Description	Volume bbl
2.00	WCM 2%w 98%m	0.010

Total Length: 2.00 ft Total Volume: 0.010 bbl

Num Fluid Samples: 0

Num Gas Bombs: 0

Serial #:

Laboratory Name:

Laboratory Location:

Recovery Comments:

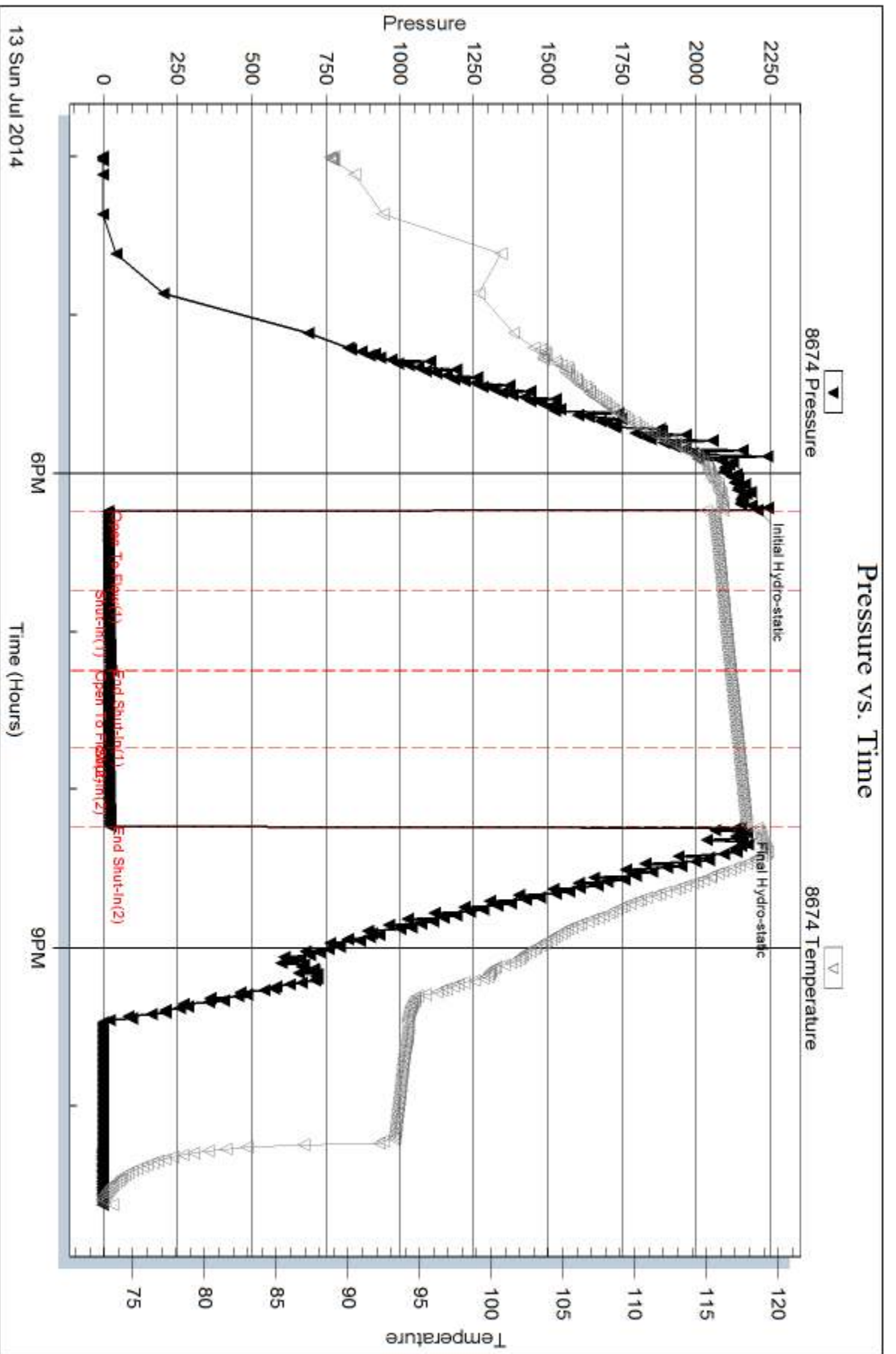
Serial #: 8674

Inside

Stalbar Oil Corp. Inc

Schroder #1-15

DST Test Number: 2

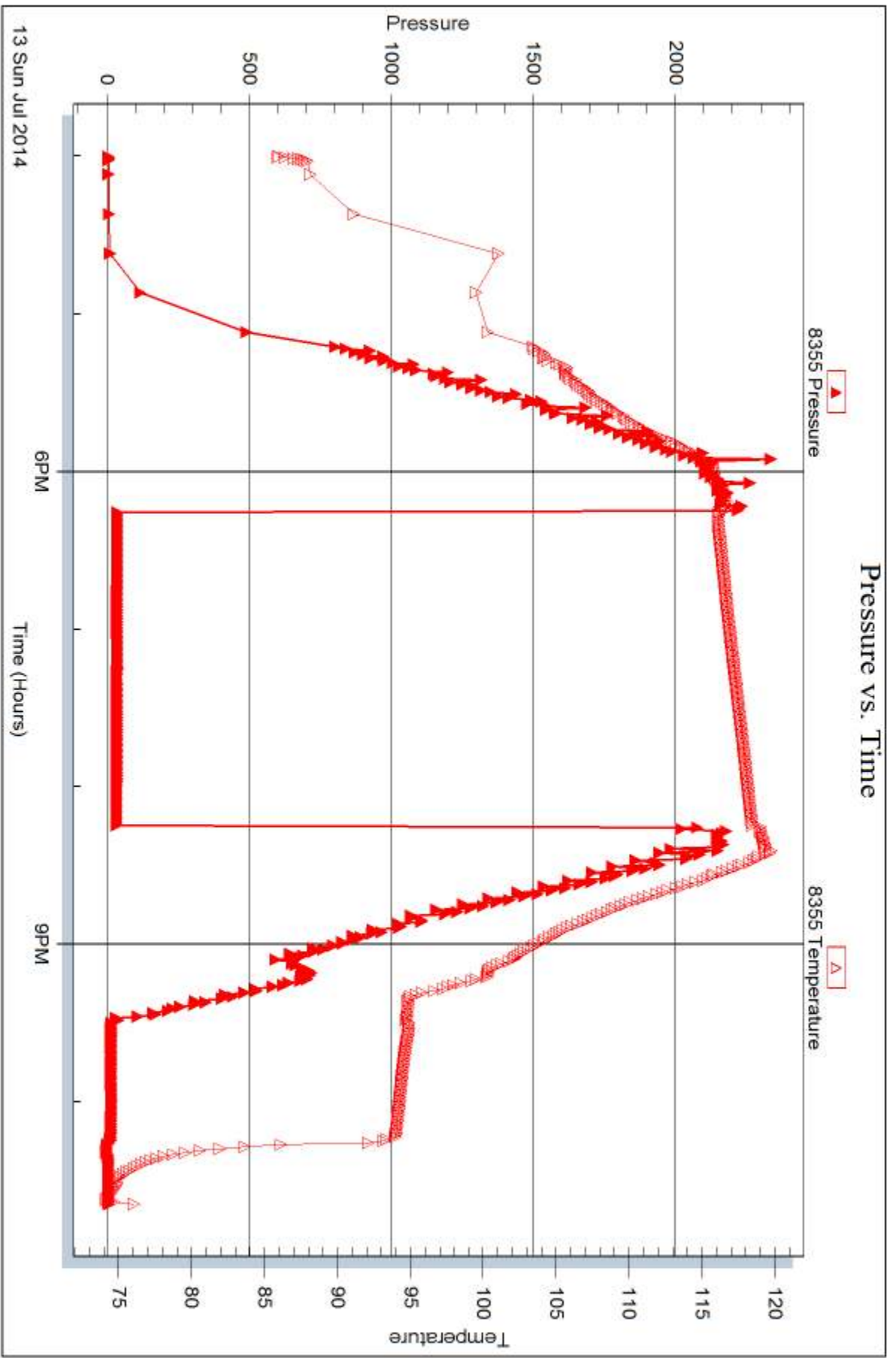


Serial #: 8355

Outside Stellar Oil Corp. Inc

Schroder #1-15

DST Test Number: 2



Trilobite Testing, Inc

Ref. No: 57705

Printed: 2014.07.17 @ 15:53:17



DRILL STEM TEST REPORT

Prepared For: **Stelbar Oil Corp. Inc**

1625 N Waterfront PKWY
Wichita KS. 67206

ATTN: David Gould

Schroder #1-15

15-17s-33w Scott,KS

Start Date: 2014.07.14 @ 15:14:00

End Date: 2014.07.14 @ 21:36:39

Job Ticket #: 57706 DST #: 3

Trilobite Testing, Inc
PO Box 362 Hays, KS 67601
ph: 785-625-4778 fax: 785-625-5620

Printed: 2014.07.17 @ 15:52:49



**TRILOBITE
TESTING, INC**

DRILL STEM TEST REPORT

Stelbar Oil Corp. Inc
1625 N Waterfront PKWY
Wichita KS. 67206
ATTN: David Gould

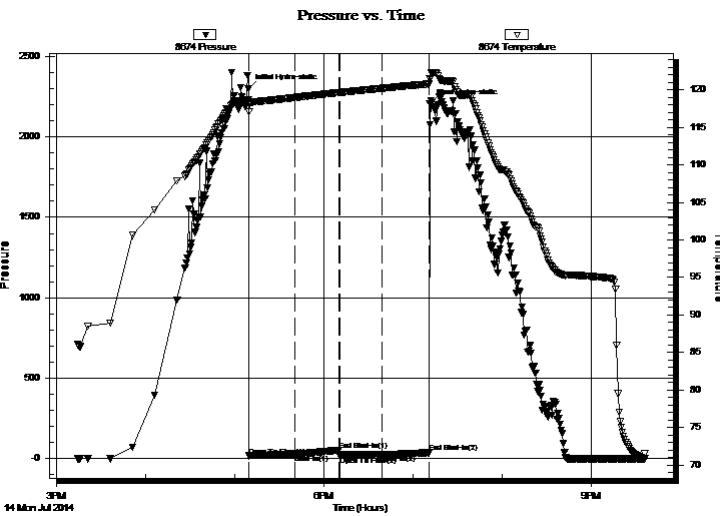
15-17s-33w Scott,KS
Schroder #1-15
Job Ticket: 57706 **DST#: 3**
Test Start: 2014.07.14 @ 15:14:00

GENERAL INFORMATION:

Formation: **Pawnee - Cherokee**
Deviated: No Whipstock: ft (KB)
Time Tool Opened: 17:09:40
Time Test Ended: 21:36:39
Interval: **4465.00 ft (KB) To 4565.00 ft (KB) (TVD)**
Total Depth: 4565.00 ft (KB) (TVD)
Hole Diameter: 7.88 inches Hole Condition: Fair
Test Type: Conventional Bottom Hole (Reset)
Tester: Will MacLean
Unit No: 72
Reference Elevations: 3007.00 ft (KB)
2996.00 ft (CF)
KB to GR/CF: 11.00 ft

Serial #: 8674 Inside
Press@RunDepth: 23.98 psig @ 4469.00 ft (KB) Capacity: 8000.00 psig
Start Date: 2014.07.14 End Date: 2014.07.14 Last Calib.: 2014.07.14
Start Time: 15:14:00 End Time: 21:36:39 Time On Btm: 2014.07.14 @ 17:09:25
Time Off Btm: 2014.07.14 @ 19:11:10

TEST COMMENT: IF- Weak Surface Blow
IS- No Blow
FF- No Blow
FS- No Blow



PRESSURE SUMMARY

Time (Min.)	Pressure (psig)	Temp (deg F)	Annotation
0	2298.47	118.71	Initial Hydro-static
1	18.03	117.13	Open To Flow (1)
31	25.26	119.00	Shut-In(1)
61	53.30	119.66	End Shut-In(1)
61	18.10	119.64	Open To Flow (2)
90	23.98	120.23	Shut-In(2)
122	36.85	120.80	End Shut-In(2)
122	2206.80	121.48	Final Hydro-static

Recovery

Length (ft)	Description	Volume (bbl)
5.00	100% m with a Few Oil Spots	0.02

* Recovery from multiple tests

Gas Rates

Choke (inches)	Pressure (psig)	Gas Rate (Mcf/d)



**TRILOBITE
TESTING, INC**

DRILL STEM TEST REPORT

TOOL DIAGRAM

Stelbar Oil Corp. Inc

15-17s-33w Scott,KS

1625 N Waterfront PKWY
Wichita KS. 67206

Schroder #1-15

Job Ticket: 57706

DST#: 3

ATTN: David Gould

Test Start: 2014.07.14 @ 15:14:00

Tool Information

Drill Pipe:	Length: 4203.00 ft	Diameter: 3.80 inches	Volume: 58.96 bbl	Tool Weight:	2500.00 lb
Heavy Wt. Pipe:	Length: 0.00 ft	Diameter: 0.00 inches	Volume: 0.00 bbl	Weight set on Packer:	30000.00 lb
Drill Collar:	Length: 247.00 ft	Diameter: 2.25 inches	Volume: 1.21 bbl	Weight to Pull Loose:	12000.00 lb
			<u>Total Volume: 60.17 bbl</u>	Tool Chased	ft
Drill Pipe Above KB:	14.00 ft			String Weight: Initial	76000.00 lb
Depth to Top Packer:	4465.00 ft			Final	76000.00 lb
Depth to Bottom Packer:	ft				
Interval between Packers:	100.00 ft				
Tool Length:	129.00 ft				
Number of Packers:	2	Diameter: 6.75 inches			

Tool Comments:

Tool Description

Tool Description	Length (ft)	Serial No.	Position	Depth (ft)	Accum. Lengths
Change Over Sub	1.00			4437.00	
Shut In Tool	5.00			4442.00	
Sampler	2.00			4444.00	
Hydraulic tool	5.00			4449.00	
Jars	5.00			4454.00	
Safety Joint	2.00			4456.00	
Packer	5.00			4461.00	29.00 Bottom Of Top Packer
Packer	4.00			4465.00	
Stubb	1.00			4466.00	
Perforations	3.00			4469.00	
Recorder	0.00	8355	Outside	4469.00	
Recorder	0.00	8674	Inside	4469.00	
Perforations	25.00			4494.00	
Change Over Sub	1.00			4495.00	
Drill Pipe	64.00			4559.00	
Change Over Sub	1.00			4560.00	
Bullnose	5.00			4565.00	100.00 Bottom Packers & Anchor
Total Tool Length:	129.00				



**TRILOBITE
TESTING, INC**

DRILL STEM TEST REPORT

FLUID SUMMARY

Stelbar Oil Corp. Inc

15-17s-33w Scott,KS

1625 N Waterfront PKWY
Wichita KS. 67206

Schroder #1-15

Job Ticket: 57706

DST#: 3

ATTN: David Gould

Test Start: 2014.07.14 @ 15:14:00

Mud and Cushion Information

Mud Type: Gel Chem

Cushion Type:

Oil API:

deg API

Mud Weight: 9.00 lb/gal

Cushion Length:

ft

Water Salinity:

ppm

Viscosity: 63.00 sec/qt

Cushion Volume:

bbf

Water Loss: 7.18 in³

Gas Cushion Type:

Resistivity: ohm.m

Gas Cushion Pressure:

psig

Salinity: 4000.00 ppm

Filter Cake: 1.00 inches

Recovery Information

Recovery Table

Length ft	Description	Volume bbf
5.00	100% m with a Few Oil Spots	0.025

Total Length: 5.00 ft Total Volume: 0.025 bbf

Num Fluid Samples: 0

Num Gas Bombs: 0

Serial #:

Laboratory Name:

Laboratory Location:

Recovery Comments:

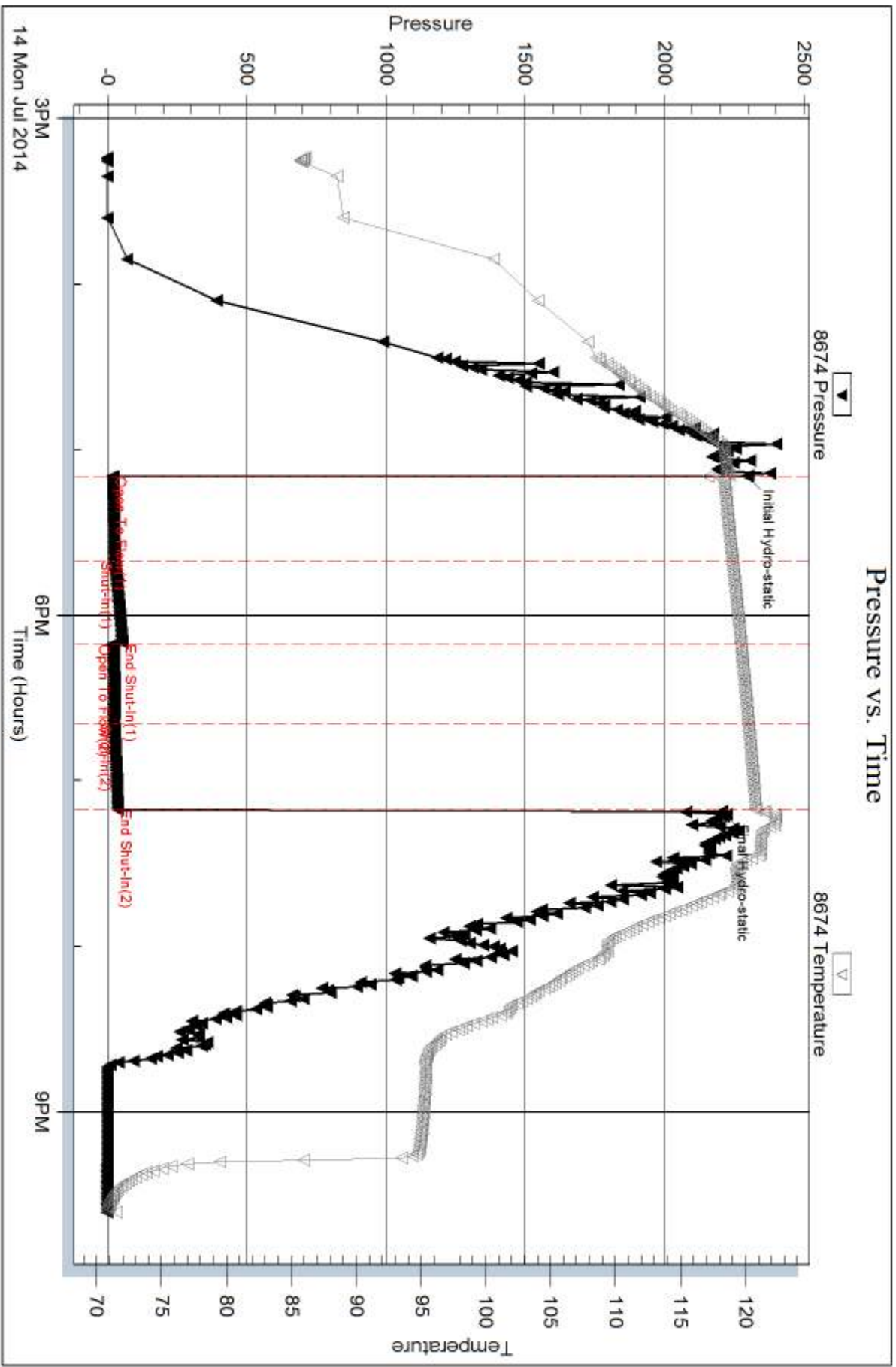
Serial #: 8674

Inside

Stellar Oil Corp. Inc

Schroder #1-15

DST Test Number: 3

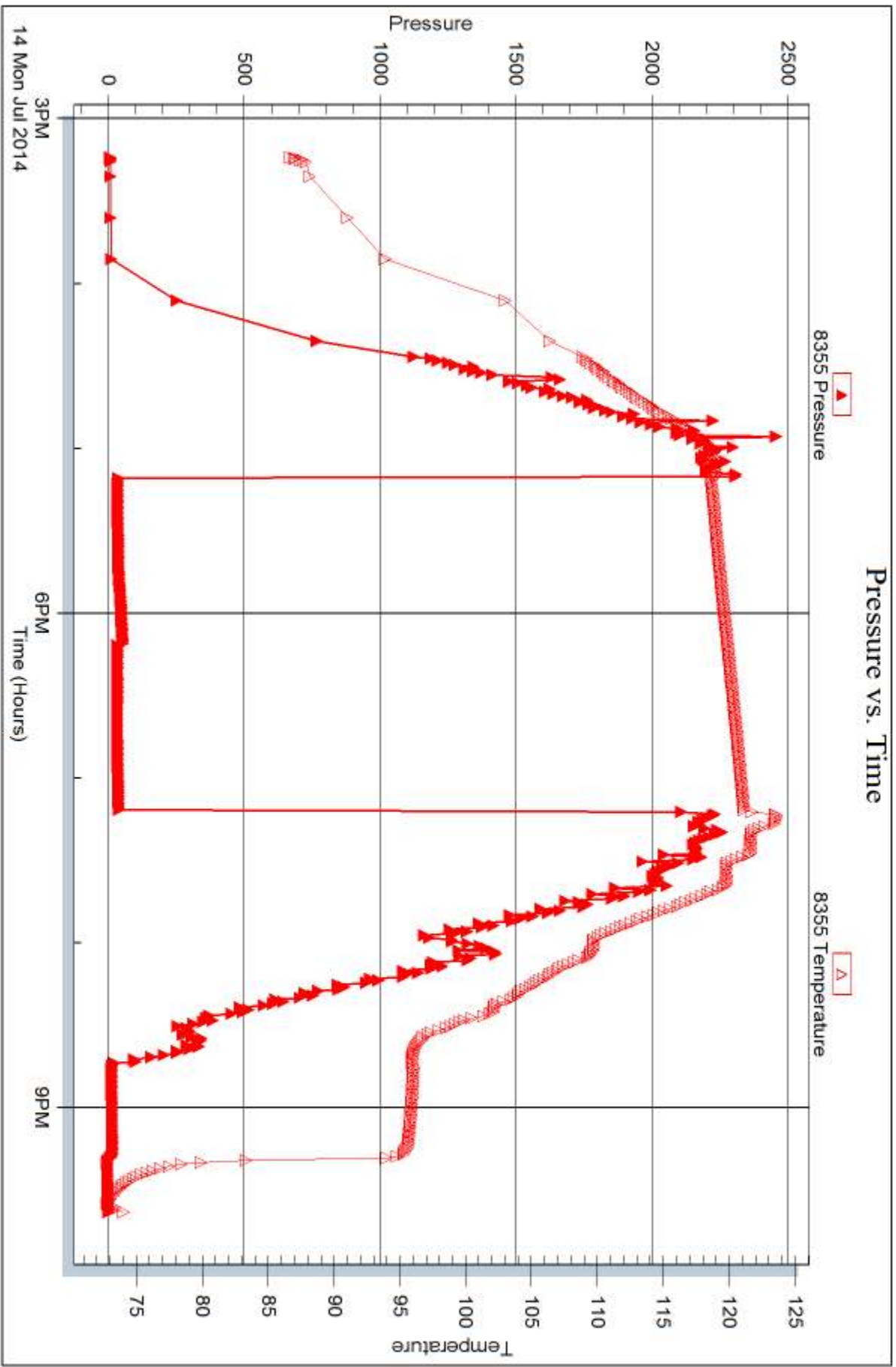


Serial #: 8355

Outside Stellar Oil Corp. Inc

Schroder #1-15

DST Test Number: 3



Trilobite Testing, Inc

Ref. No: 57706

Printed: 2014.07.17 @ 15:52:51



DRILL STEM TEST REPORT

Prepared For: **Stelbar Oil Corp. Inc**

1625 N Waterfront PKWY
Wichita KS. 67206

ATTN: David Gould

Schroder #1-15

15-17s-33w Scott,KS

Start Date: 2014.07.15 @ 11:02:00

End Date: 2014.07.15 @ 17:14:24

Job Ticket #: 57707 DST #: 4

Trilobite Testing, Inc
PO Box 362 Hays, KS 67601
ph: 785-625-4778 fax: 785-625-5620

Printed: 2014.07.17 @ 15:51:56



TRILOBITE TESTING, INC.

DRILL STEM TEST REPORT

Stelbar Oil Corp. Inc
 1625 N Waterfront PKWY
 Wichita KS. 67206
 ATTN: David Gould

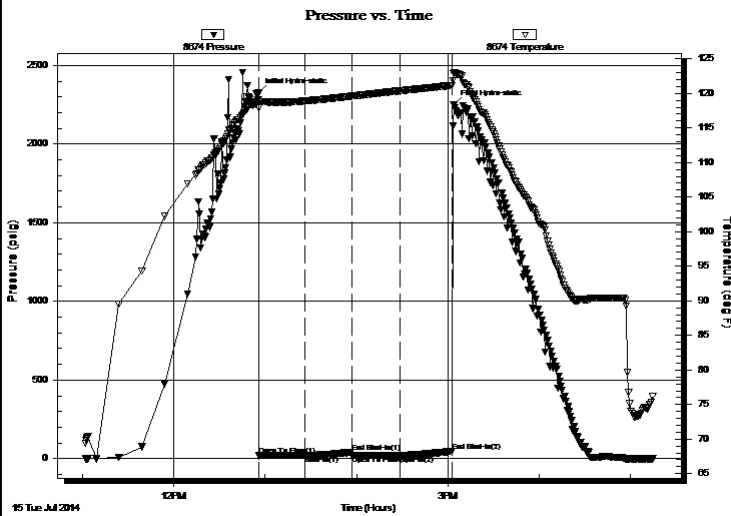
15-17s-33w Scott,KS
Schroder #1-15
 Job Ticket: 57707 **DST#: 4**
 Test Start: 2014.07.15 @ 11:02:00

GENERAL INFORMATION:

Formation: **Johnson**
 Deviated: No Whipstock: ft (KB)
 Time Tool Opened: 12:55:40
 Time Test Ended: 17:14:24
 Interval: **4567.00 ft (KB) To 4650.00 ft (KB) (TVD)**
 Total Depth: 4650.00 ft (KB) (TVD)
 Hole Diameter: 7.88 inches Hole Condition: Good
 Test Type: Conventional Bottom Hole (Reset)
 Tester: Will MacLean
 Unit No: 72
 Reference Elevations: 3007.00 ft (KB)
 2996.00 ft (CF)
 KB to GR/CF: 11.00 ft

Serial #: 8674 Inside
 Press@RunDepth: 21.52 psig @ 4569.00 ft (KB) Capacity: 8000.00 psig
 Start Date: 2014.07.15 End Date: 2014.07.15 Last Calib.: 2014.07.15
 Start Time: 11:02:00 End Time: 17:14:24 Time On Btm: 2014.07.15 @ 12:55:25
 Time Off Btm: 2014.07.15 @ 15:03:40

TEST COMMENT: IF- Weak Surface Blow 1/4"
 IS- No Blow
 FF- No Blow
 FS- No Blow



PRESSURE SUMMARY

Time (Min.)	Pressure (psig)	Temp (deg F)	Annotation
0	2325.30	119.11	Initial Hydro-static
1	18.83	117.87	Open To Flow (1)
31	20.79	118.88	Shut-In(1)
62	42.85	119.60	End Shut-In(1)
62	19.89	119.58	Open To Flow (2)
93	21.52	120.35	Shut-In(2)
128	46.69	121.13	End Shut-In(2)
129	2249.02	122.84	Final Hydro-static

Recovery

Length (ft)	Description	Volume (bbl)
5.00	100% m with a Few Oil Spots	0.02

* Recovery from multiple tests

Gas Rates

Choke (inches)	Pressure (psig)	Gas Rate (Mcf/d)



TRILOBITE TESTING, INC.

DRILL STEM TEST REPORT

Stelbar Oil Corp. Inc
 1625 N Waterfront PKWY
 Wichita KS. 67206
 ATTN: David Gould

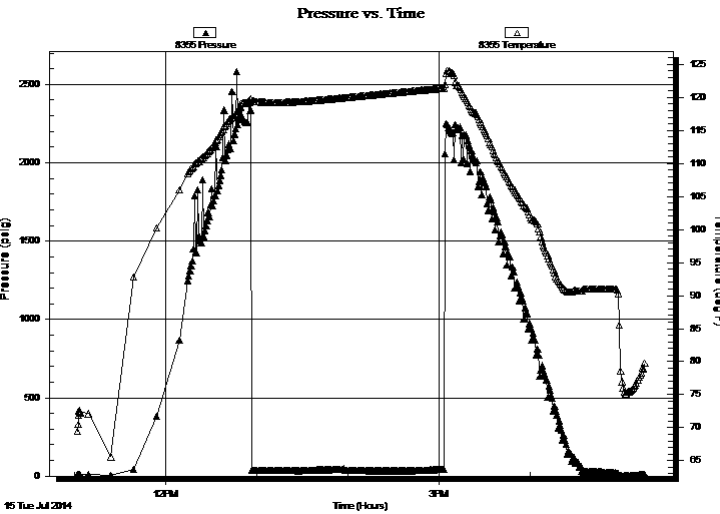
15-17s-33w Scott,KS
Schroder #1-15
 Job Ticket: 57707 **DST#: 4**
 Test Start: 2014.07.15 @ 11:02:00

GENERAL INFORMATION:

Formation: **Johnson**
 Deviated: No Whipstock: ft (KB)
 Time Tool Opened: 12:55:40
 Time Test Ended: 17:14:24
Interval: 4567.00 ft (KB) To 4650.00 ft (KB) (TVD)
 Total Depth: 4650.00 ft (KB) (TVD)
 Hole Diameter: 7.88 inches Hole Condition: Good
 Test Type: Conventional Bottom Hole (Reset)
 Tester: Will MacLean
 Unit No: 72
 Reference Elevations: 3007.00 ft (KB)
 2996.00 ft (CF)
 KB to GR/CF: 11.00 ft

Serial #: 8355 Outside
 Press@RunDepth: psig @ 4569.00 ft (KB) Capacity: 8000.00 psig
 Start Date: 2014.07.15 End Date: 2014.07.15 Last Calib.: 2014.07.15
 Start Time: 11:02:05 End Time: 17:15:44 Time On Btm:
 Time Off Btm:

TEST COMMENT: IF- Weak Surface Blow 1/4"
 IS- No Blow
 FF- No Blow
 FS- No Blow



PRESSURE SUMMARY			
Time (Min.)	Pressure (psig)	Temp (deg F)	Annotation

Recovery		
Length (ft)	Description	Volume (bbl)
5.00	100% m with a Few Oil Spots	0.02

* Recovery from multiple tests

Gas Rates			
	Choke (inches)	Pressure (psig)	Gas Rate (Mcf/d)



**TRILOBITE
TESTING, INC**

DRILL STEM TEST REPORT

TOOL DIAGRAM

Stelbar Oil Corp. Inc

15-17s-33w Scott,KS

1625 N Waterfront PKWY
Wichita KS. 67206

Schroder #1-15

Job Ticket: 57707

DST#: 4

ATTN: David Gould

Test Start: 2014.07.15 @ 11:02:00

Tool Information

Drill Pipe:	Length: 4301.00 ft	Diameter: 3.80 inches	Volume: 60.33 bbl	Tool Weight: 2500.00 lb
Heavy Wt. Pipe:	Length: 0.00 ft	Diameter: 0.00 inches	Volume: 0.00 bbl	Weight set on Packer: 30000.00 lb
Drill Collar:	Length: 247.00 ft	Diameter: 2.25 inches	Volume: 1.21 bbl	Weight to Pull Loose: 12000.00 lb
			<u>Total Volume: 61.54 bbl</u>	Tool Chased ft
Drill Pipe Above KB:	10.00 ft			String Weight: Initial 78000.00 lb
Depth to Top Packer:	4567.00 ft			Final 78000.00 lb
Depth to Bottom Packer:	ft			
Interval between Packers:	83.00 ft			
Tool Length:	112.00 ft			
Number of Packers:	2	Diameter: 6.75 inches		

Tool Comments:

Tool Description

Tool Description	Length (ft)	Serial No.	Position	Depth (ft)	Accum. Lengths
Change Over Sub	1.00			4539.00	
Shut In Tool	5.00			4544.00	
Sampler	2.00			4546.00	
Hydraulic tool	5.00			4551.00	
Jars	5.00			4556.00	
Safety Joint	2.00			4558.00	
Packer	5.00			4563.00	29.00 Bottom Of Top Packer
Packer	4.00			4567.00	
Stubb	1.00			4568.00	
Perforations	1.00			4569.00	
Recorder	0.00	8355	Outside	4569.00	
Recorder	0.00	8674	Inside	4569.00	
Perforations	10.00			4579.00	
Change Over Sub	1.00			4580.00	
Drill Pipe	64.00			4644.00	
Change Over Sub	1.00			4645.00	
Bullnose	5.00			4650.00	83.00 Bottom Packers & Anchor
Total Tool Length:	112.00				



**TRILOBITE
TESTING, INC**

DRILL STEM TEST REPORT

FLUID SUMMARY

Stelbar Oil Corp. Inc

15-17s-33w Scott,KS

1625 N Waterfront PKWY
Wichita KS. 67206

Schroder #1-15

Job Ticket: 57707

DST#: 4

ATTN: David Gould

Test Start: 2014.07.15 @ 11:02:00

Mud and Cushion Information

Mud Type: Gel Chem

Cushion Type:

Oil API:

deg API

Mud Weight: 9.00 lb/gal

Cushion Length:

ft

Water Salinity:

ppm

Viscosity: 66.00 sec/qt

Cushion Volume:

bbf

Water Loss: 8.77 in³

Gas Cushion Type:

Resistivity: ohm.m

Gas Cushion Pressure:

psig

Salinity: 3000.00 ppm

Filter Cake: 1.00 inches

Recovery Information

Recovery Table

Length ft	Description	Volume bbf
5.00	100% m with a Few Oil Spots	0.025

Total Length: 5.00 ft Total Volume: 0.025 bbf

Num Fluid Samples: 0

Num Gas Bombs: 0

Serial #:

Laboratory Name:

Laboratory Location:

Recovery Comments:

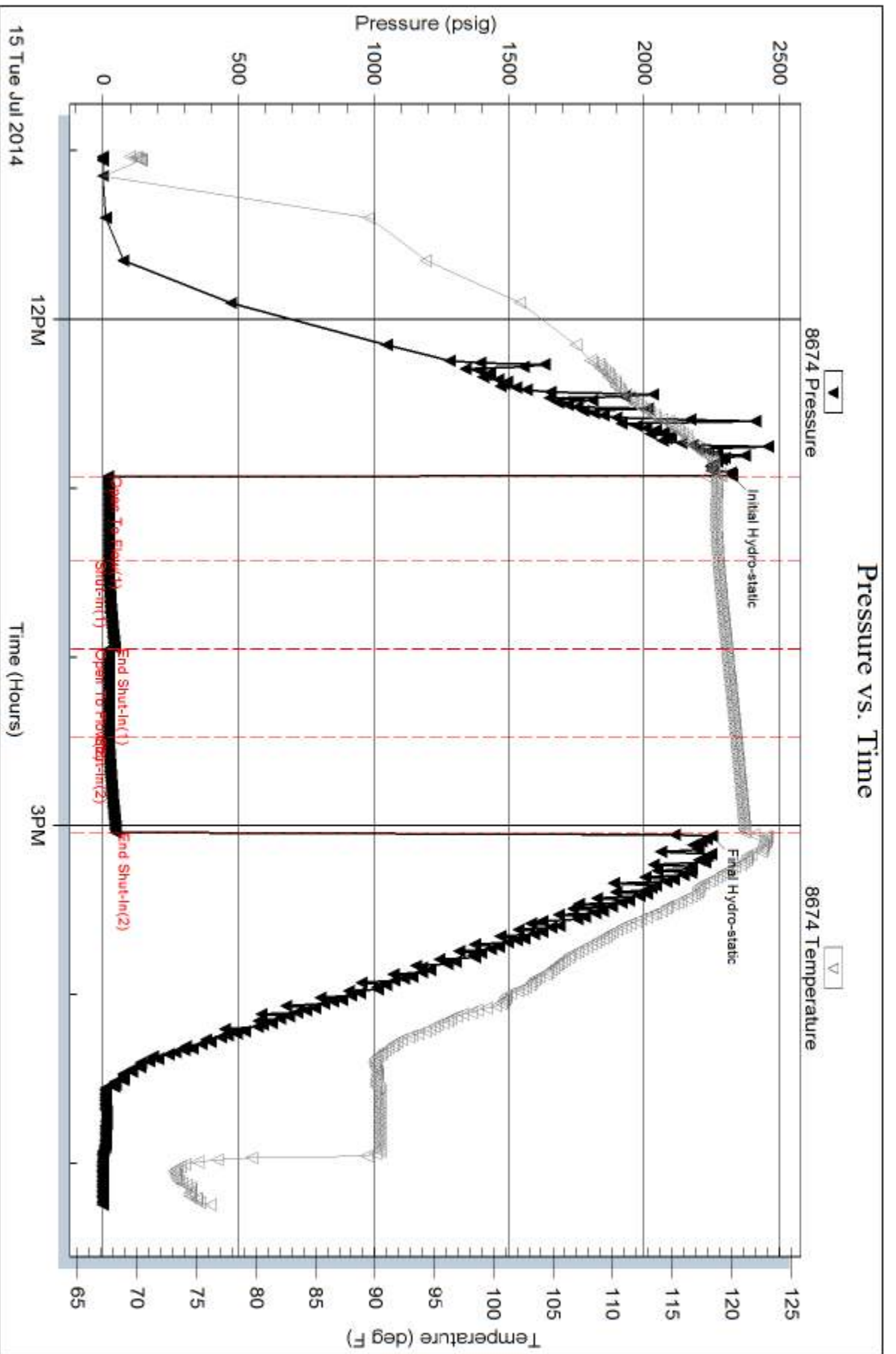
Serial #: 8674

Inside

Stellar Oil Corp. Inc

Schroder #1-15

DST Test Number: 4



Tribble Testing, Inc

Ref. No: 57707

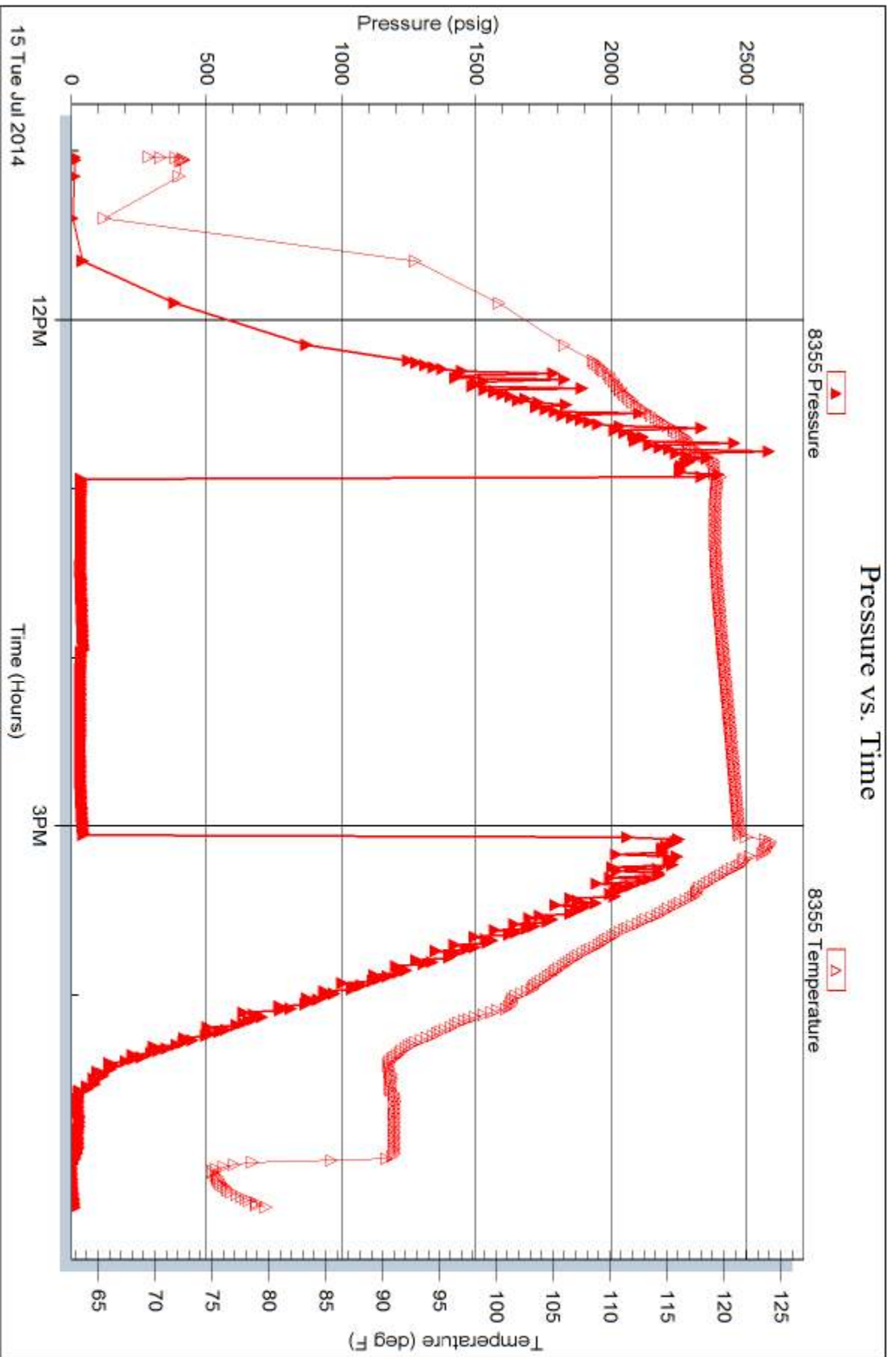
Printed: 2014.07.17 @ 15:51:57

Serial #: 8355

Outside Stebar Oil Corp. Inc

Schroder #1-15

DST Test Number: 4



Trilobite Testing, Inc

Ref. No: 57707

Printed: 2014.07.17 @ 15:51:57



TRILOBITE TESTING, INC.

P.O. Box 362 • Hays, Kansas 67601

FLUID SAMPLER DATA

Ticket No. 57704 Date 7-13-14
 Company Name Stelbar Oil Corp. Inc
 Lease Schroder # 1-15 Test No. DST #1
 County Scott Sec. 15 Twp. 17s Rng. 33W

SAMPLER RECOVERY

Gas ~~Misrun~~ Misrun ML
 Oil _____ ML
 Mud _____ ML
 Water _____ ML
 Other _____ ML
 Pressure _____ ML
 Total _____ ML

PIT MUD ANALYSIS

Chlorides 3500 ppm.
 Resistivity _____ ohms @ _____ F
 Viscosity 47
 Mud Weight 9.1
 Filtrate 8.8
 Other 115 LCM

SAMPLER ANALYSIS

Resistivity _____ ohms @ _____ F
 Chlorides _____ ppm.
 Gravity _____ corrected @60F

PIPE RECOVERY

TOP
 Resistivity _____ ohms @ _____ F
 Chlorides _____ ppm.
MIDDLE
 Resistivity _____ ohms @ _____ F
 Chlorides _____ ppm.
BOTTOM
 Resistivity _____ ohms @ _____ F
 Chlorides _____ ppm.



TRILOBITE TESTING INC.

1515 Commerce Parkway • Hays, Kansas 67601

Test Ticket

NO. 57705

4/10

Well Name & No. Schroder #1-15 Test No. DST #2 Date 7-13-14
 Company Stelbar Oil Corp, Inc Elevation 3007 KB 2996 GL
 Address 1625 N. Waterfront PKWY Wichita KS 67206
 Co. Rep / Geo. Dave Goldax / David Gould Rig Sterling #2
 Location: Sec. 15 Twp. 17S Rge. 33W Co. Scott State KS

Interval Tested 4379-4426 Zone Tested Marmanton
 Anchor Length 47 Drill Pipe Run 4111 Mud Wt. 9.3
 Top Packer Depth 4375 Drill Collars Run 247 Vis 51
 Bottom Packer Depth 4379 Wt. Pipe Run 0 WL 8.0
 Total Depth 4426 Chlorides 4400 ppm System LCM 116

Blow Description IF-Weak Surface Blow Died in 14 min
ISI- No Blow
FF- No Blow
FSI- No Blow

Rec	Feet of	%gas	%oil	%water	%mud
<u>2</u>	<u>WCM</u>			<u>2</u>	<u>98</u>
Rec	Feet of	%gas	%oil	%water	%mud
Rec	Feet of	%gas	%oil	%water	%mud
Rec	Feet of	%gas	%oil	%water	%mud
Rec	Feet of	%gas	%oil	%water	%mud

Rec Total 2 BHT 118 Gravity _____ API RW _____ @ _____ °F Chlorides _____ ppm

(A) Initial Hydrostatic 2026 Test 1250 T-On Location 15:20
 (B) First Initial Flow 17 Jars 250 T-Started 16:00
 (C) First Final Flow 19 Safety Joint 75 T-Open 18:14
 (D) Initial Shut-In 25 Circ Sub NIC T-Pulled 20:14
 (E) Second Initial Flow 18 Hourly Standby _____ T-Out 22:37
 (F) Second Final Flow 20 Mileage 32 RIT 49.60 Comments _____
 (G) Final Shut-In 24 Sampler _____
 (H) Final Hydrostatic 2150 Straddle _____ Ruined Shale Packer _____
 Shale Packer _____ Ruined Packer _____
 Extra Packer _____ Extra Copies _____
 Extra Recorder _____ Sub Total 0
 Day Standby _____ Total 1624.60
 Accessibility _____ MP/DST Disc't _____
 Sub Total 1624.60

Initial Open 30
 Initial Shut-In 30
 Final Flow 30
 Final Shut-In 30

Approved By [Signature] Our Representative [Signature]

Trilobite Testing Inc. shall not be liable for damaged of any kind of the property or personnel of the one for whom a test is made, or for any loss suffered or sustained, directly or indirectly, through the use of its equipment, or its statements or opinion concerning the results of any test, tools lost or damaged in the hole shall be paid for at cost by the party for whom the test is made.



TRILOBITE TESTING, INC.

P.O. Box 362 • Hays, Kansas 67601

FLUID SAMPLER DATA

Ticket No. 57705 Date 7-13-14
 Company Name Stelhar Oil Corp. Inc
 Lease Schroder #1-15 Test No. DST #2
 County Scott Sec. 15 Twp. 17S Rng. 33W

SAMPLER RECOVERY

Gas _____ ML
 Oil _____ ML
 Mud _____ ML
 Water _____ ML
 Other _____ ML
 Pressure _____ ML
 Total _____ ML

plugged

PIT MUD ANALYSIS

Chlorides 4400 ppm.
 Resistivity _____ ohms @ _____ F
 Viscosity 51
 Mud Weight ~~8.0~~ 9.3
 Filtrate 8.0
 Other 115 LCM

SAMPLER ANALYSIS

Resistivity _____ ohms @ _____ F
 Chlorides _____ ppm.
 Gravity _____ corrected @60F

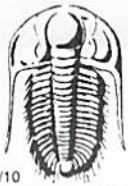
Dan [Signature]

PIPE RECOVERY

TOP
 Resistivity _____ ohms @ _____ F
 Chlorides _____ ppm.

MIDDLE
 Resistivity _____ ohms @ _____ F
 Chlorides _____ ppm.

BOTTOM
 Resistivity _____ ohms @ _____ F
 Chlorides _____ ppm.



TRILOBITE TESTING INC.

1515 Commerce Parkway • Hays, Kansas 67601

Test Ticket

NO. 57706

4/10

Well Name & No. Schroder #1-15 Test No. DST #3 Date 7-14-14
 Company Stelbar Oil Corp. Inc Elevation 3007 KB 2796 GL
 Address 1625 N. Waterfront PKWY Wichita KS 67206
 Co. Rep / Geo. David Gold Rig Sterling #2
 Location: Sec. 15 Twp. 17s Rge. 33W Co. Scott State KS

Interval Tested 4465-4565 Zone Tested Pawnee-Cherokee
 Anchor Length 100 Drill Pipe Run 4203 Mud Wt. 9.3
 Top Packer Depth 4461 Drill Collars Run 247 Vis 63
 Bottom Packer Depth 4465 Wt. Pipe Run 0 WL 7.2
 Total Depth 4565 Chlorides 4000 ppm System LCM 115

Blow Description IF-Weak Surface Blow
ISI-No Blow
FF-No Blow
FSI-No Blow

Rec	Feet of	%gas	%oil	%water	%mud
<u>5</u>	<u>Mud w. 1/2 a Few Oil Spots</u>			<u>100</u>	
Rec	Feet of	%gas	%oil	%water	%mud
Rec	Feet of	%gas	%oil	%water	%mud
Rec	Feet of	%gas	%oil	%water	%mud

Rec Total 5 BHT 121 Gravity _____ API RW _____ @ _____ °F Chlorides _____ ppm

(A) Initial Hydrostatic <u>2298</u>	<input checked="" type="checkbox"/> Test 1250	T-On Location <u>14:40</u>
(B) First Initial Flow <u>18</u>	<input checked="" type="checkbox"/> Jars 250	T-Started <u>15:14</u>
(C) First Final Flow <u>25</u>	<input checked="" type="checkbox"/> Safety Joint 75	T-Open <u>17:09</u>
(D) Initial Shut-In <u>53</u>	<input checked="" type="checkbox"/> Circ Sub <u>NIC</u>	T-Pulled <u>19:11</u>
(E) Second Initial Flow <u>18</u>	<input type="checkbox"/> Hourly Standby	T-Out <u>21:36</u>
(F) Second Final Flow <u>23</u>	<input checked="" type="checkbox"/> Mileage <u>32 RIT</u> 49.60	Comments _____
(G) Final Shut-In <u>36</u>	<input checked="" type="checkbox"/> Sampler	_____
(H) Final Hydrostatic <u>2206</u>	<input type="checkbox"/> Straddle	<input type="checkbox"/> Ruined Shale Packer

Initial Open <u>30</u>	<input type="checkbox"/> Shale Packer	<input type="checkbox"/> Ruined Packer
Initial Shut-In <u>30</u>	<input type="checkbox"/> Extra Packer	<input type="checkbox"/> Extra Copies
Final Flow <u>30</u>	<input type="checkbox"/> Extra Recorder	Sub Total <u>0</u>
Final Shut-In <u>30</u>	<input type="checkbox"/> Day Standby	Total <u>1624.60</u>
	<input type="checkbox"/> Accessibility	MP/DST Disc't _____
	Sub Total <u>1624.60</u>	

Approved By _____ Our Representative [Signature]

Trilobite Testing Inc. shall not be liable for damaged of any kind of the property or personnel of the one for whom a test is made, or for any loss suffered or sustained, directly or indirectly, through the use of its equipment, or its statements or opinion concerning the results of any test, tools lost or damaged in the hole shall be paid for at cost by the party for whom the test is made.



TRILOBITE TESTING, INC.

P.O. Box 362 • Hays, Kansas 67601

FLUID SAMPLER DATA

Ticket No. 57706 Date 7-14-14
 Company Name Stelbar Oil Corp. Inc
 Lease Schroder # 1-15 Test No. DST # 3
 County Scott Sec. 15 Twp. 17s Rng. 33w

SAMPLER RECOVERY

Gas _____ ML
 Oil plugged off ML
 Mud _____ ML
 Water _____ ML
 Other _____ ML
 Pressure _____ ML
 Total _____ ML

PIT MUD ANALYSIS

Chlorides 4000 ppm.
 Resistivity _____ ohms @ _____ F
 Viscosity 6.3
 Mud Weight 9.3
 Filtrate 7.2
 Other 116 LCM

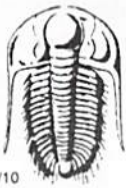
SAMPLER ANALYSIS

Resistivity _____ ohms @ _____ F
 Chlorides _____ ppm.
 Gravity _____ corrected @60F

PIPE RECOVERY

TOP
 Resistivity _____ ohms @ _____ F
 Chlorides _____ ppm.
MIDDLE
 Resistivity _____ ohms @ _____ F
 Chlorides _____ ppm.
BOTTOM
 Resistivity _____ ohms @ _____ F
 Chlorides _____ ppm.

David Smith



TRILOBITE TESTING INC.

1515 Commerce Parkway • Hays, Kansas 67601

Test Ticket

NO. 57707

4/10

Well Name & No. Schroder #1-15 Test No. DST #4 Date 7-15-14
 Company Stelbar Oil Corp. Inc Elevation 3007 KB 2996 GL
 Address 1625 N Waterfront PKWY Wichita KS 67206
 Co. Rep / Geo. David Gould Rig Sterlings #2
 Location: Sec. 15 Twp. 17S Rge. 33W Co. Scott State KS

Interval Tested 4567-4650 Zone Tested Johnson
 Anchor Length 83 Drill Pipe Run 4301 Mud Wt. 9.2
 Top Packer Depth 4563 Drill Collars Run 247 Vis 66
 Bottom Packer Depth 4567 Wt. Pipe Run 0 WL 8.8
 Total Depth 4650 Chlorides 3000 ppm System LCM 116

Blow Description IF - Wear Surface Blow 1/4"
ISI - No Blow
FF - No Blow
FSI - No Blow

Rec	Feet of	%gas	%oil	%water	%mud
<u>5</u>	<u>Mud with a few oil spots</u>			<u>100</u>	
Rec	Feet of	%gas	%oil	%water	%mud
Rec	Feet of	%gas	%oil	%water	%mud
Rec	Feet of	%gas	%oil	%water	%mud
Rec	Feet of	%gas	%oil	%water	%mud

Rec Total 5 BHT 122 Gravity _____ API RW _____ @ _____ °F Chlorides _____ ppm

(A) Initial Hydrostatic 2325 Test 1250 T-On Location 10:40
 (B) First Initial Flow 18 Jars 250 T-Started 11:02
 (C) First Final Flow 20 Safety Joint 75 T-Open 12:55
 (D) Initial Shut-In 42 Circ Sub NIC T-Pulled 15:03
 (E) Second Initial Flow 19 Hourly Standby _____ T-Out 17:14
 (F) Second Final Flow 21 Mileage 32 RTT x 2 99.20 Comments called at 8:11pm to pickup tools
 (G) Final Shut-In 46 Sampler 250
 (H) Final Hydrostatic 2249 Straddle _____ Ruined Shale Packer _____
 Shale Packer _____ Ruined Packer _____
 Extra Packer _____ Extra Copies _____
 Extra Recorder _____ Sub Total 0
 Day Standby _____ Total 1924.20
 Accessibility _____ MP/DST Disc't _____

Initial Open 30
 Initial Shut-In 30
 Final Flow 30
 Final Shut-In 30

Sub Total 1924.20

Approved By David Gould Our Representative Bill Man

Trilobite Testing Inc. shall not be liable for damaged of any kind of the property or personnel of the one for whom a test is made, or for any loss suffered or sustained, directly or indirectly, through the use of its equipment, or its statements or opinion concerning the results of any test, tools lost or damaged in the hole shall be paid for at cost by the party for whom the test is made.



TRILOBITE TESTING, INC.

P.O. Box 362 • Hays, Kansas 67601

FLUID SAMPLER DATA

Ticket No. 57907 Date 7-15-14
 Company Name Stelbar Oil Corp. LLC
 Lease Schroder Test No. DST #4
 County Scott Sec. 15 Twp. 17S Rng. 33W

SAMPLER RECOVERY

Gas _____ ML
 Oil _____ ML
 Mud 2000 ML
 Water _____ ML
 Other _____ ML
 Pressure 1016 ML
 Total _____ ML

PIT MUD ANALYSIS

Chlorides 3000 ppm.
 Resistivity _____ ohms @ _____ F
 Viscosity 66
 Mud Weight 9.2
 Filtrate 8.8
 Other 116 LCM

SAMPLER ANALYSIS

Resistivity _____ ohms @ _____ F
 Chlorides _____ ppm.
 Gravity _____ corrected @60F

Handwritten signature

PIPE RECOVERY

TOP
 Resistivity _____ ohms @ _____ F
 Chlorides _____ ppm.
MIDDLE
 Resistivity _____ ohms @ _____ F
 Chlorides _____ ppm.
BOTTOM
 Resistivity _____ ohms @ _____ F
 Chlorides _____ ppm.

GEOLOGIC REPORT

DAVID J. GOLDAK

WICHITA, KANSAS
Scale 1:240 (5"=100') Imperial
Measured Depth Log

Well Name: Schroder #1-15
API: API: 15-171-21059
Location: Section 15 - T17S - R33W
License Number: 6044
Spud Date: 07 / 09 / 2014
Surface Coordinates: 900' FNL and 2305' FEL
NE - SW - NW - NE
Bottom Hole Coordinates: 900' FNL and 2305' FEL
NE - SW - NW - NE
Ground Elevation (ft): 2996' K.B. Elevation (ft): 3007'
Logged Interval (ft): 3700' To: 4790' Total Depth (ft): 4790'
Formation: Mississippi
Type of Drilling Fluid: Chemical - Mud-Co

Region: Scott Co., KS
Drilling Completed: 07/16/2014

Printed by MUD.LOG from WellSight Systems 1-800-447-1534 www.WellSight.com

OPERATOR

Company: Stelbar Oil Corporation
Address: 1625 N. Waterfront Pkwy., Suite 200
Wichita, Kansas 67206-6602

GEOLOGIST

Name:	David J. Goldak	David J. Gould
Company:	D. J. GOLDAK, INC.	DMT Company
Address:	155 N. Market, Suite 710 Wichita, Kansas 67202	532 Sunrise Pratt, Kansas 67124

General Info

CONTRACTOR: Sterling Drilling, Rig #2

BIT RECORD:

No.	Size	Make	Jets	Out	Feet	Hours
1	12-1/4	JZ-HAOOTC	3-14s	313	313	2.25
2	7-7/8	JZ-HAIP	?	408	95	1.25
3	7-7/8	Ulterra-U516M	5-16s			

SURVEYS: 313'-0.75, 4426'-1.75, 4565'-1.25, 4790'-1.25

GENERAL DRILLING & PUMP INFORMATION:

Drilling with 10,000-16,000 lbs on bit and 80-90 RPM.

Drilling with 7 stands of collars (6.25"x2.25"): 428.30'

Pumping 58-70 S/M; 8.9-10.8 B/M; 800-1000 psi at standpipe.

Daily Status

07/09/14 - Spud at 4:45 PM; Set 8-5/8" csg at 308'
07/10/14 - 313' WOC; DP at 11:15 AM; Bit trip at 408'
07/11/14 - 2,412' Drilling; Displace mud @ 3,400'
07/12/14 - 3,996' Drilling
07/13/14 - 4,426' Prep for DST #1; DST #2 @ 4,426' in PM
07/14/14 - 4530' CFS, Logging@ 3:30 PM
07/15/14 - 4650' Short Trip for DST #4
07/16/14 - 4790' Short Trip for Logs

DSTs

DST #1: 4,379' - 4,426' (Marmaton)
Misrun - Could not get to bottom

DST #2: 4,379' - 4,426' (Marmaton)

DST #3: 4,465' - 4,565' (Pawnee & Cherokee)

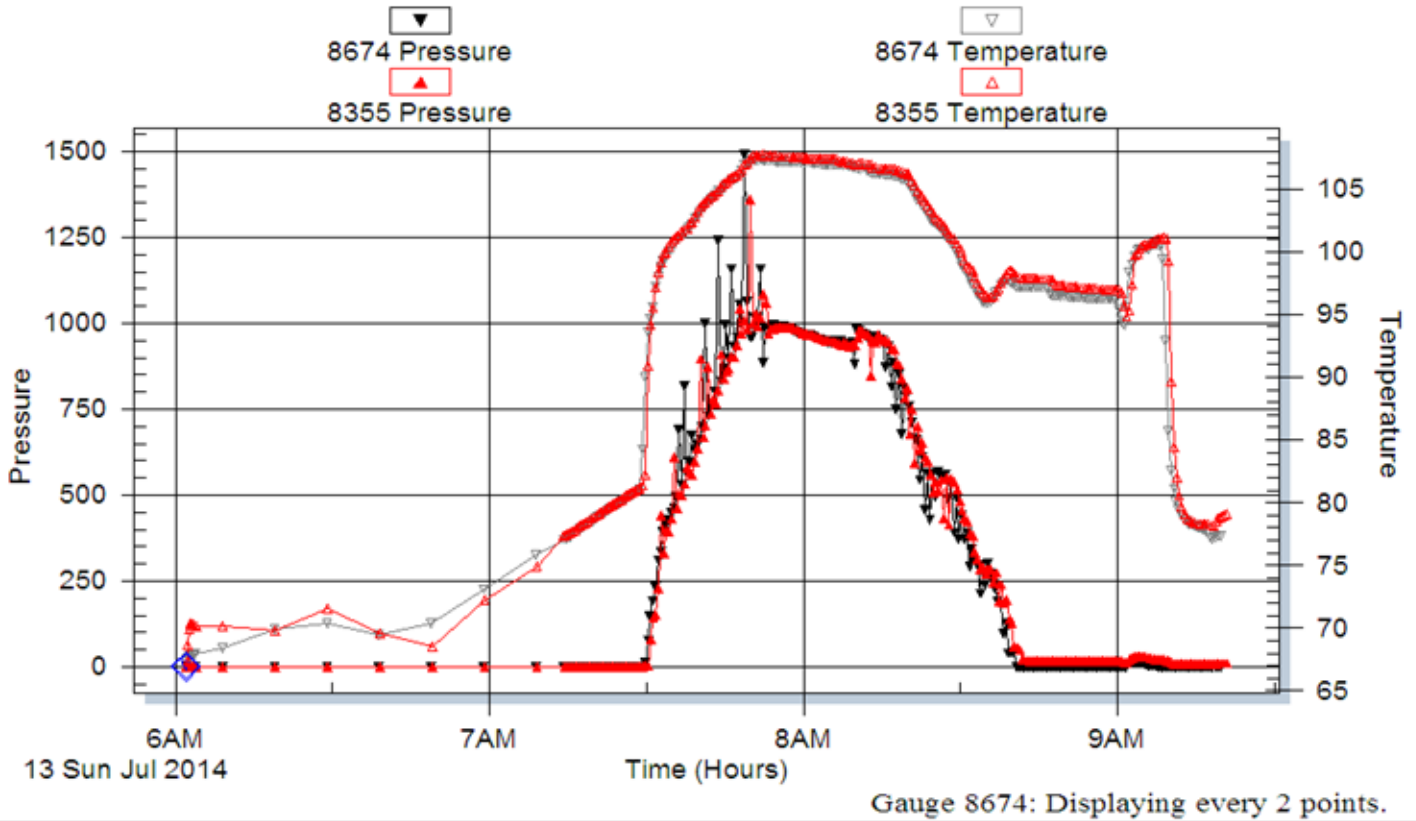
DST #4: 4,567' - 4,650' (Johnson Zone)

Well Name & No.: Schroder #1-15 Company: Stelbar Oil Corp Inc Test No.: 1

Interval Tested: 4379 – 4426 Zone Tested: Marmanton Times:

Misrun Hit bridge around 2540' pushed thru it and hit another one in about 5 feet, got thru it and hit another bridge then came out of hole with test tool.

Pressure vs. Time



Well Name & No.: Schroder #1-15 Company: Stelbar Oil Corp Inc Test No.: 2

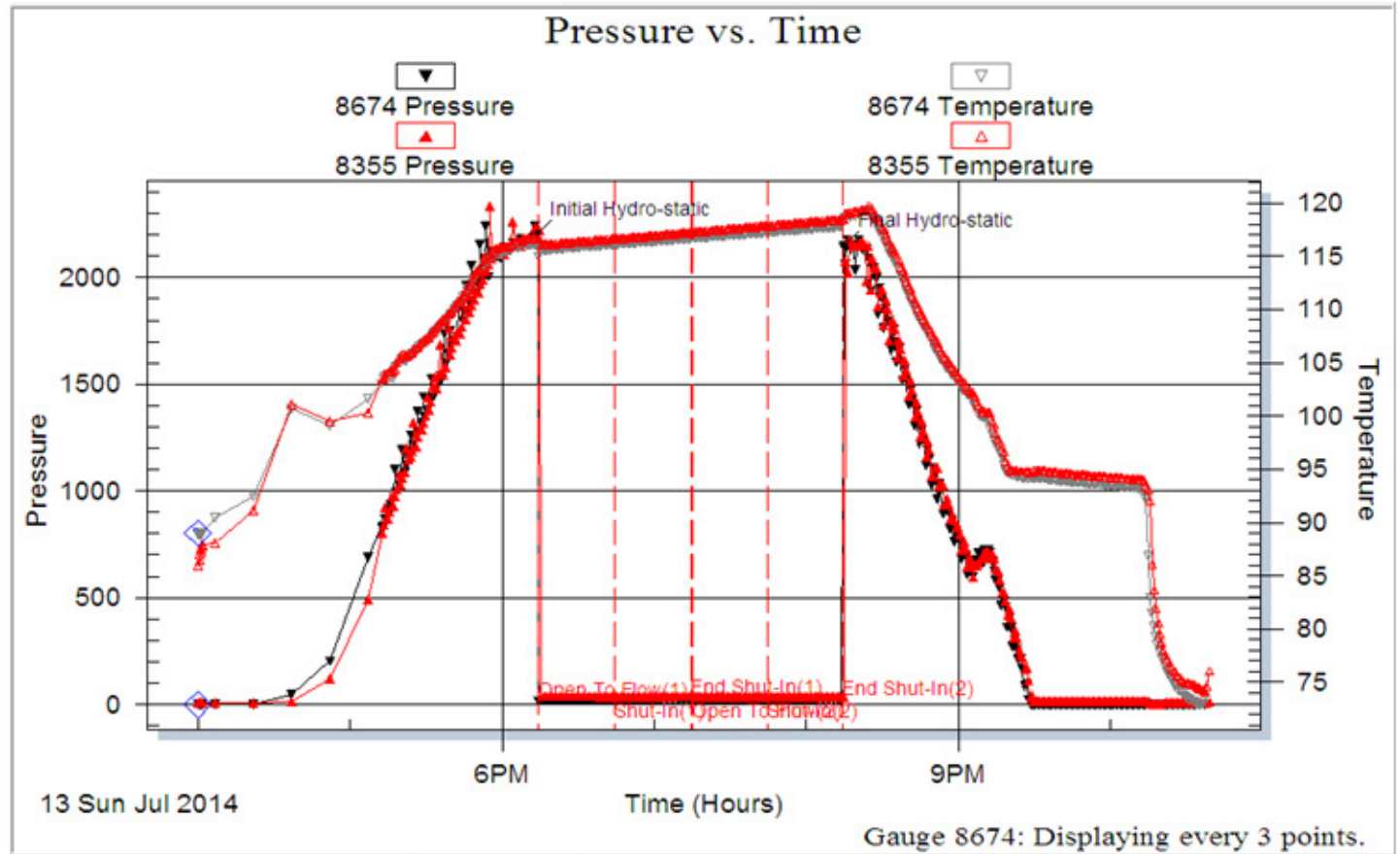
Interval Tested: 4379 – 4426 Zone Tested: Marmanton Times: 30-30-30-30

Blow Description: IFP: Weak surface blow died in 14 min. ISI: No Blow Back. FFP: No Blow FSI: No blow back

Rec: 2 Feet of WCM 2% Water 98% Mud, Rec. Total: 2', BHT: 118 Gravity: N/A

Initial Hydrostatic: 2226 First Initial Flow: 17 First Final Flow: 19 Initial Shut-In: 25

Second Initial Flow: 18 Second Final Flow: 20 Final Shut-In: 24 Final Hydrostatic: 2150



Well Name & No.: Schroder #1-15 Company: Stelbar Oil Corp Inc Test No.: 3

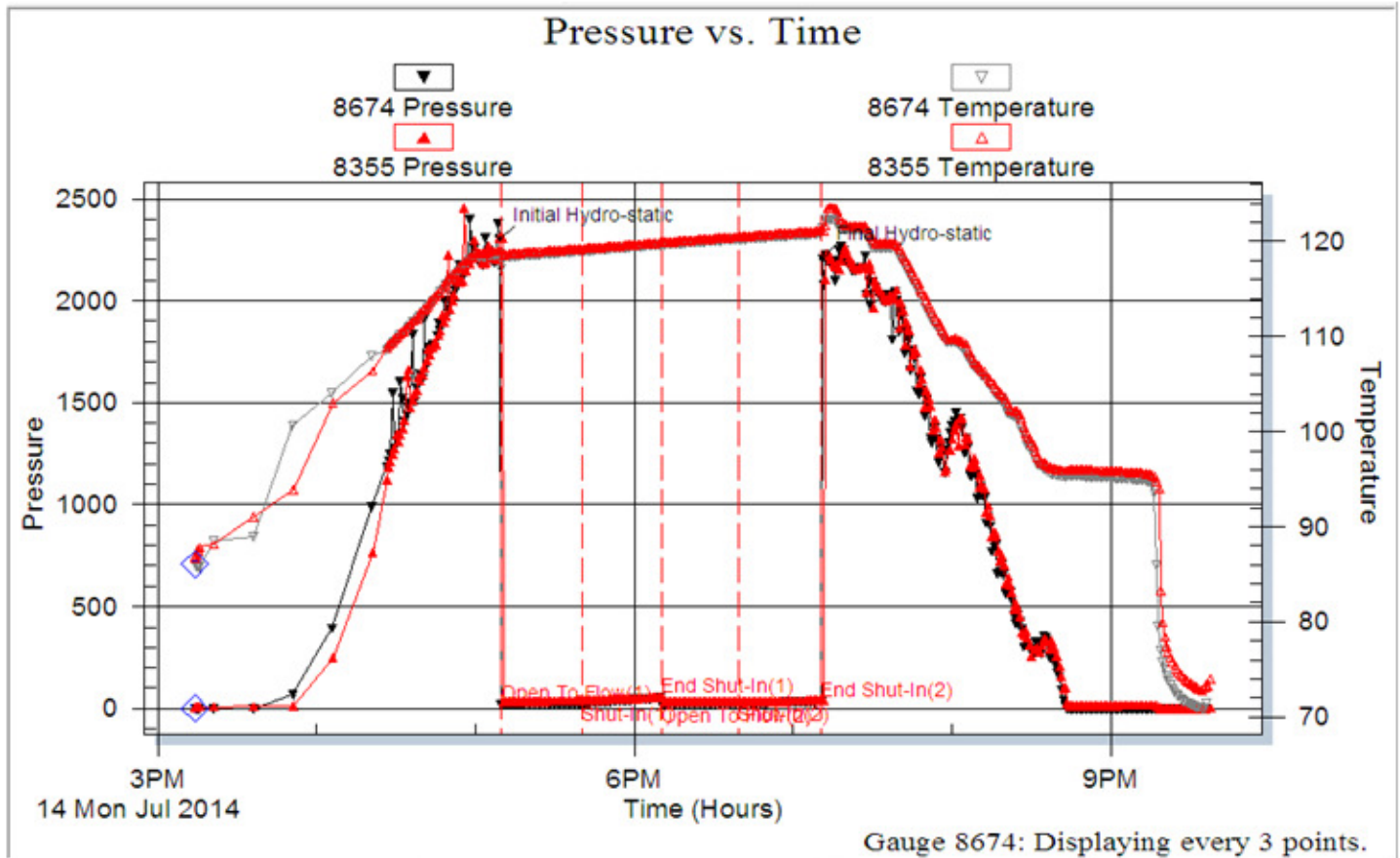
Interval Tested: 4465 – 4565 Zone Tested: Pawnee & Cherokee Times: 30-30-30-30

Blow Description: IFP: Weak surface blow ISI: No blow back FFP: No blow FSI: No blow back

Rec: 5 Feet of Mud with oil spots 100% Mud, Rec. Total: 5', BHT: 121 Gravity: N/A

Initial Hydrostatic: 2298 First Initial Flow: 18 First Final Flow: 25 Initial Shut-In: 53

Second Initial Flow: 18 Second Final Flow: 23 Final Shut-In: 36 Final Hydrostatic: 2206



Well Name & No.: Schroder #1-15 Company: Stelbar Oil Corp Inc Test No.: 4

Interval Tested: 4567 – 44650 Zone Tested: Johnson Zone Times: 30-30-30-30

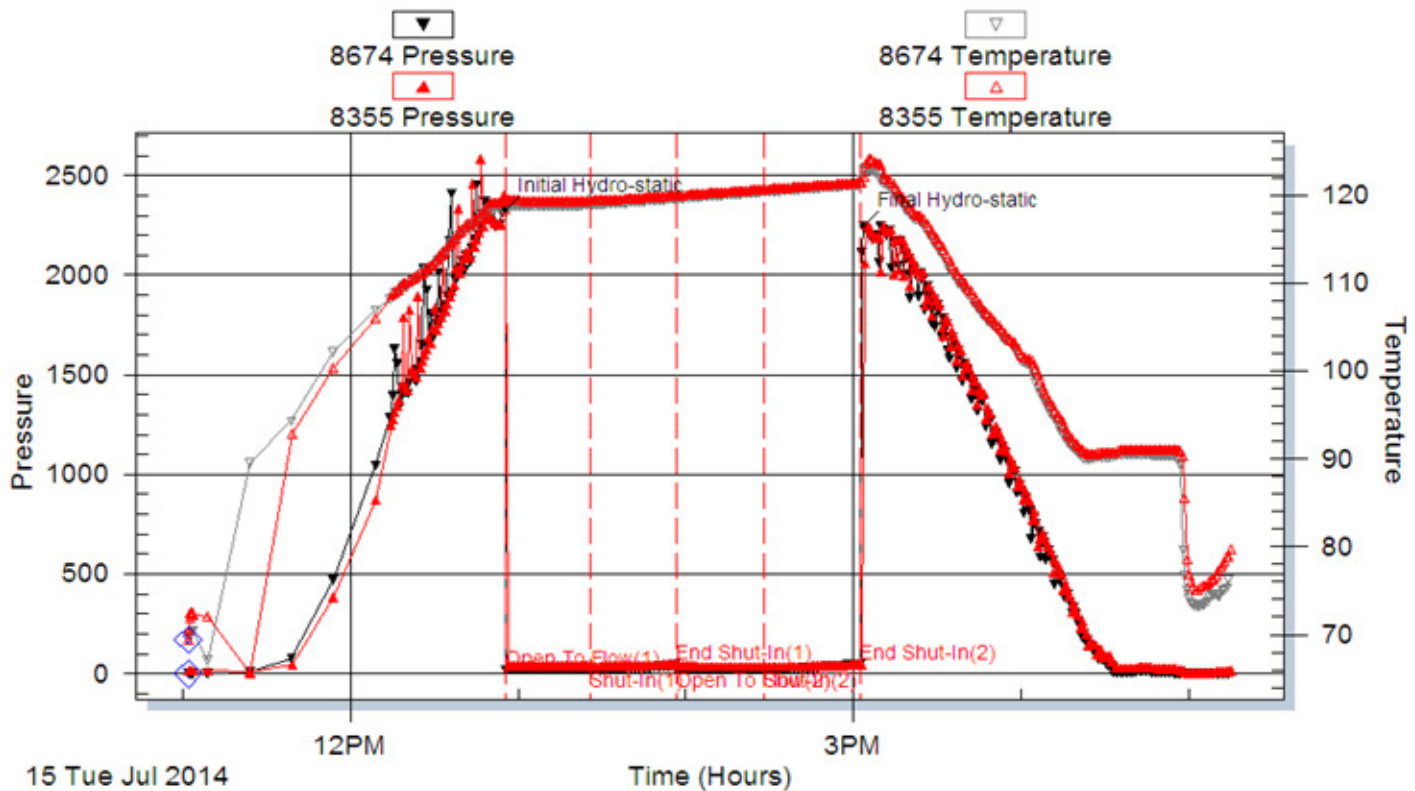
Blow Description: IFP: Weak surface blow ¼" ISI: No blow back FFP: No blow FSI: No blow back

Rec: 5 Feet of Mud with few oil spots, 1% Mud Rec. Total: 5', BHT: 122 Gravity: N/A

Initial Hydrostatic: 2325 First Initial Flow: 18 First Final Flow: 20 Initial Shut-In: 42

Second Initial Flow: 19 Second Final Flow: 21 Final Shut-In: 46 Final Hydrostatic: 2249

Pressure vs. Time



Gauge 8674: Displaying every 3 points.

ROCK TYPES

- Anhy
- Bent
- Brec
- Cht
- Clyst
- Coal
- Congl
- Dol

- Gyp
- Igne
- Lmst
- Meta
- Mrlst
- Salt
- Shale
- Shcol

- Shgy
- Slst
- Ss
- Till
- Carb sh
- Dol
- Dtd
- Gry sh

- Sandylms
- Shale
- Slstn
- Shlyslts
- Sltysh
- Lms

ACCESSORIES

MINERAL

- Anhy
- Arggrn
- Arg
- Bent
- Bit
- Breclrag
- Calc
- Carb
- Chtdk
- Chtlt
- Dol
- Feldspar
- Ferrpel
- Ferr
- Glau
- Gyp
- Hvymin
- Kaol
- Marl
- Minxl
- Nodule
- Phos
- Pyr

- Salt
- Sandy
- Silt
- Sil
- Sulphur
- Tuff
- Chlorite
- Dol
- Sand
- Sltly

FOSSIL

- Algae
- Amph
- Belm
- Bioclst
- Brach
- Bryozoa
- Cephal
- Coral
- Crin
- Echin
- Fish
- Foram

- Fossil
- Gastro
- Oolite
- Ostra
- Pelec
- Pellet
- Pisolite
- Plant
- Strom
- Fuss
- Oomold

STRINGER

- Anhy
- Arg
- Bent
- Coal
- Dol
- Gyp
- Ls
- Mrst
- Sltstrg
- Ssstrg
- Carbsh

- Clystn
- Dol
- Grysh
- Gryslt
- Lms
- Sandylms
- Sh
- Sltstn

TEXTURE

- Boundst
- Chalky
- Cryxln
- Earthy
- Finexln
- Grainst
- Lithogr
- Microxln
- Mudst
- Packst
- Wackest

OTHER SYMBOLS

POROSITY TYPE

- Earthy
- Fenest
- Fracture
- Inter
- Moldic
- Organic
- Pinpoint
- Vuggy

SORTING

- Well
- Moderate
- Poor

ROUNDING

- Rounded
- Subrnd
- Subang
- Angular

OIL SHOWS

- Even
- Spotted
- Ques
- Dead
- Gas show

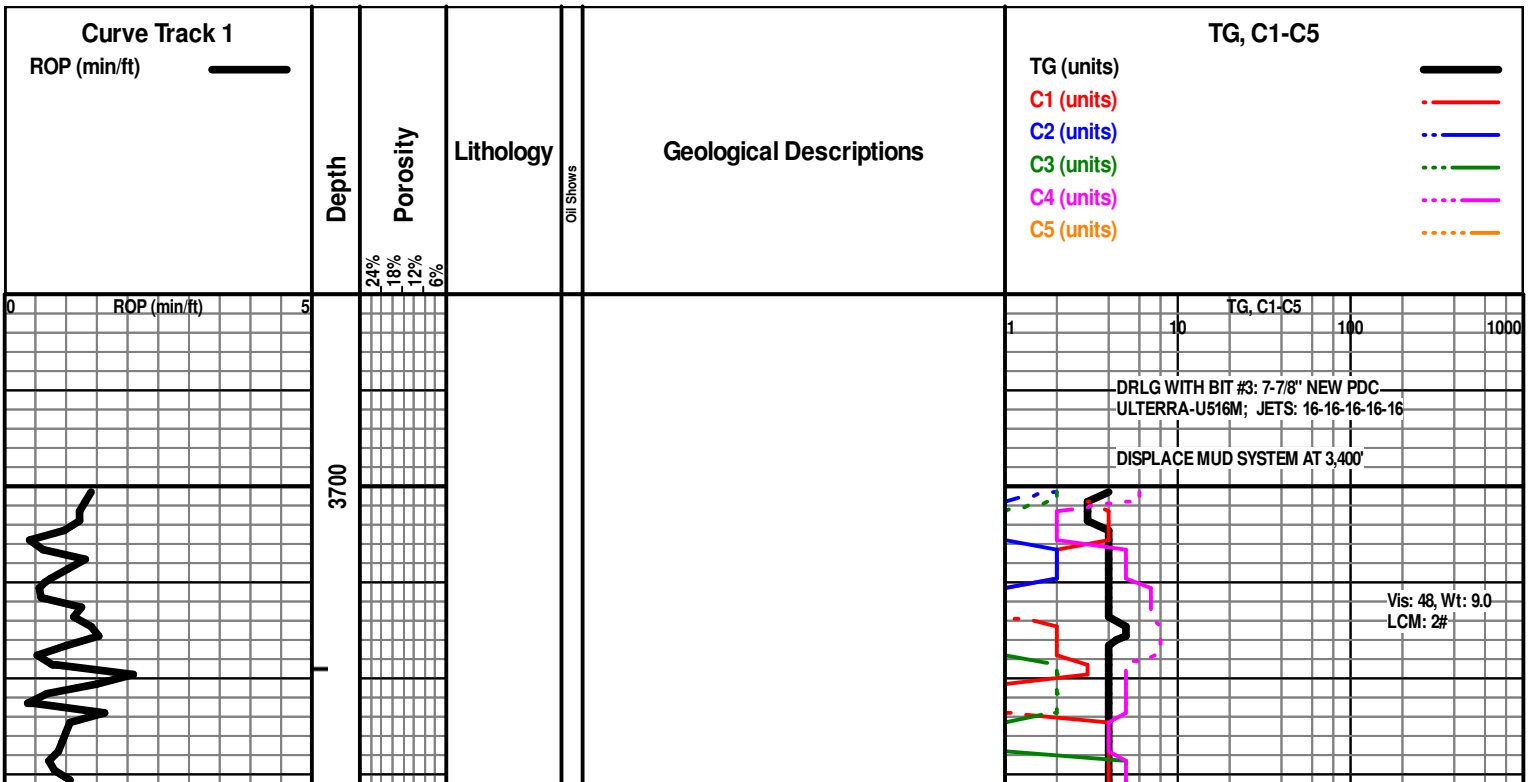
INTERVALS

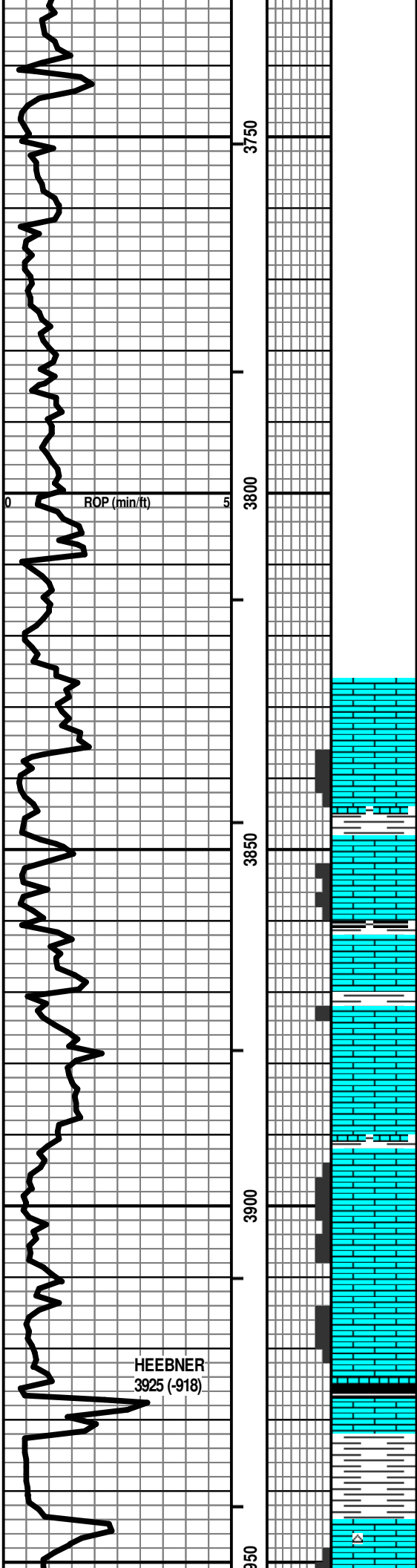
- Core
- Dst

- Dst_1_t
- Dst_1_b
- Dst

EVENTS

- Rft
- Sidewall
- Conn





LS - CRM / TAN / BRN, VF / F XLN, FOSS IN PT, PRED DNS, NS

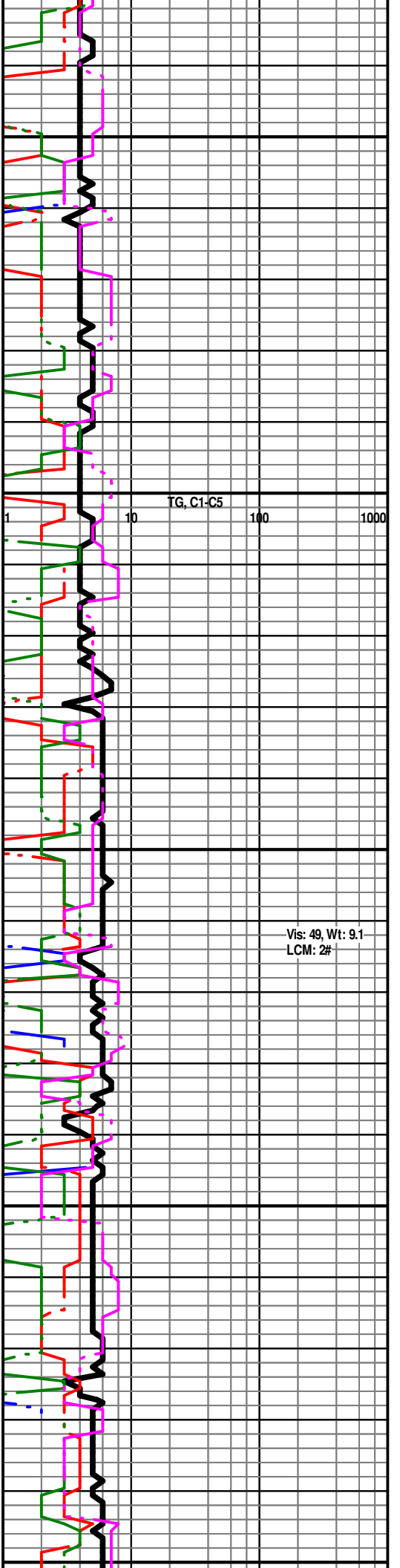
LS - CRM / TAN, F / VF XLN, FOSS IN PT, F / G INTXLN + PPT POR IN PT, TR VUG POR, NS W/ SCAT SH - LT / DK GY

LS - CRM / SCAT TAN, VF / F XLN, SL FOSS, TR PORAS ABOVE, PRED DNS, NS

LS - TAN / BRN / GY, MOT IN PT, VF / F XLN, FOSS IN PT, SUBCHKY IN PT, PRED DNS, NS

LS - CRM / TAN, F / VF XLN, FOSS IN PT, F / G INTXLN + PPT POR, CHKY / DNS IN PT, NS

SH - BLK, CARB W/ LS - TAN, VF / F XLN, SL FOSS, DNS W/ SH - GY / GRN, SLTY IN PT



Vis: 49, Wt: 9.1
LCM: 2#

HEEBNER
3925 (-918)

LS - CRM / WHT, VF / F XLN, SL FOSS, F INTXLN + PPT
POR IN PT, TR VUG POR, CHKY IN PT, NS W/ CHT -
WHT / CRM / TAN / GY

LANSING
3969 (-962)

LS - CRM / TAN, F / VF XLN, OOL + FOSS IN PT, F / SCAT
G INTXLN / INTPART POR, CHKY IN PT, PRED DNS, NS
W/ SCAT CHT - WHT / LT GY

LS - AS ABOVE, PRED DNS, NS W/ SCAT CHT - WHT /
LT GY W/ SH - GY / BLK

LS - CRM / TAN, F / VF XLN, OOL IN PT, SL FOSS, P / F
INTXLN + PPT POR, SUBCHKY IN PT / DNS, TR SPTY
DEAD STN, NSFO, NO ODOR

LS - AS ABOVE, P / F INTXLN + PPT + VUG POR, CHKY /
DNS IN PT, NS

LS - CRM / TAN / GY, VF / F XLN, FOSS + OOL IN PT,
SCAT P / F INTXLN + PPT POR, SUBCHKY / DNS, NS

LS - CRM / SCAT TAN, VF / F XLN, FOSS IN PT, SCAT
OOL, SCAT P INTXLN POR, NS

LS - CRM, VF / F XLN, SCAT OOL + FOSS, SCAT P / TR F
INTXLN POR, SCAT CHKY, PRED DNS, NS W/ SCAT
CHT - LT GY / WHT

LS - CRM / TAN, VF / F XLN, SCAT OOL + FOSS, SCAT P /
TR F INTXLN + VUG POR, CHKY IN PT / PRED DNS, NS
W/ SCAT CHT - LT GY / WHT

LS - TAN / GY, MOT, F XLN, SCAT OOL, PRED DNS, NS
W/ SH - BLK + CARB / GY

LS - CRM / LT GY, VF / F XLN, SCAT OOL, TR INTXLN

TG, C1-C5
1 10 100 1000

Vis: 47, Wt: 9.1,
YP: 15, GelS: 7/22,
pH: 11.0, WL: 8.8,
Chl: 3500, Sol: 5.3,
LCM: 1#

A

B

C

D

E

F

G

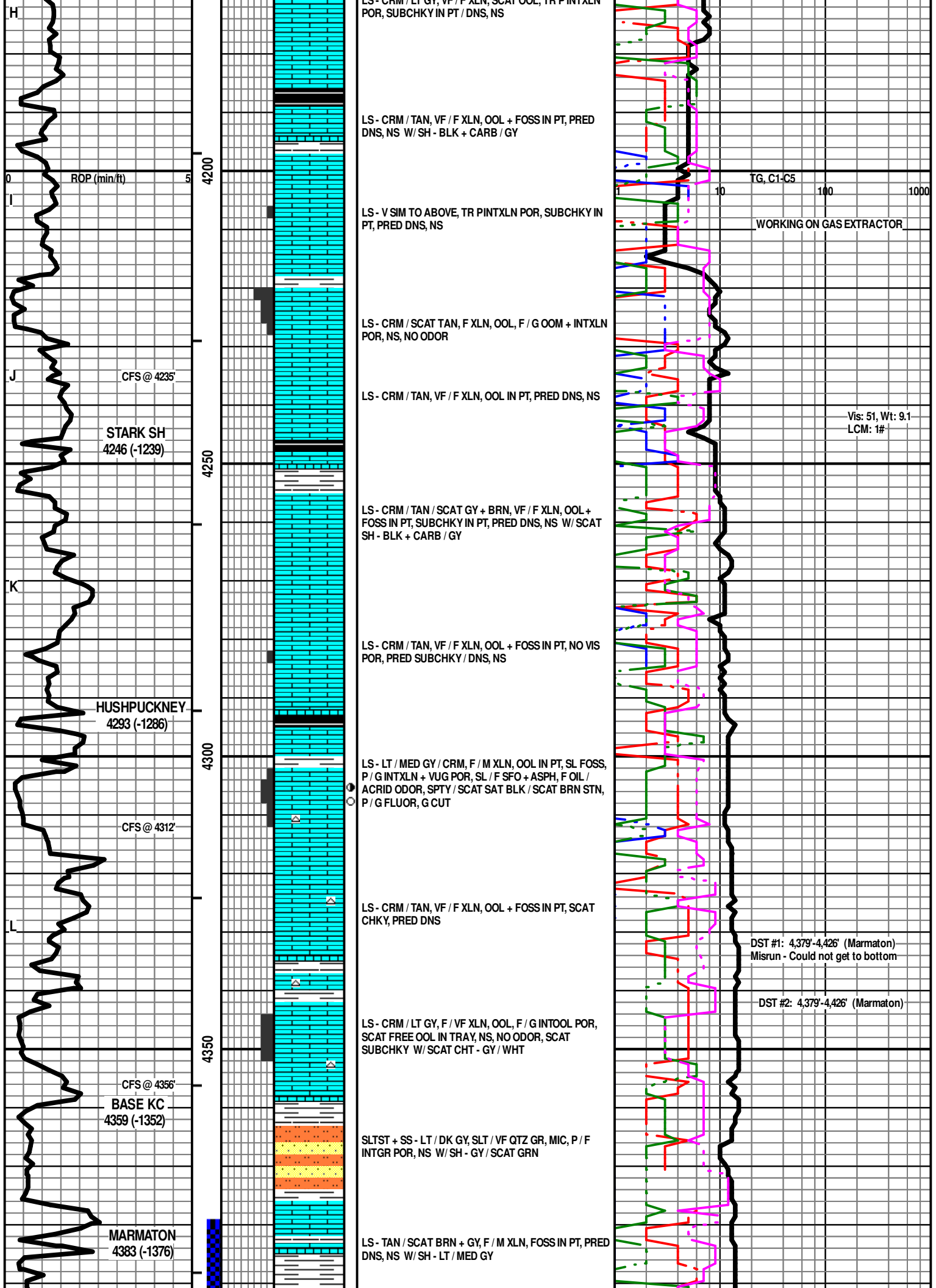
ROP (min/ft)

CFS @ 4021'

CFS @ 4074'

MUNCIE CREEK
4146 (-1139)

30
4000
4050
4100
4150



LS - CRM / LT GY, VF / F XLN, SCAT OOL, TR PINTXLN POR, SUBCHKY IN PT / DNS, NS

LS - CRM / TAN, VF / F XLN, OOL + FOSS IN PT, PRED DNS, NS W/ SH - BLK + CARB / GY

LS - V SIM TO ABOVE, TR PINTXLN POR, SUBCHKY IN PT, PRED DNS, NS

LS - CRM / SCAT TAN, F XLN, OOL, F / G OOM + INTXLN POR, NS, NO ODOR

LS - CRM / TAN, VF / F XLN, OOL IN PT, PRED DNS, NS

LS - CRM / TAN / SCAT GY + BRN, VF / F XLN, OOL + FOSS IN PT, SUBCHKY IN PT, PRED DNS, NS W/ SCAT SH - BLK + CARB / GY

LS - CRM / TAN, VF / F XLN, OOL + FOSS IN PT, NO VIS POR, PRED SUBCHKY / DNS, NS

LS - LT / MED GY / CRM, F / M XLN, OOL IN PT, SL FOSS, P / G INTXLN + VUG POR, SL / F SFO + ASPH, F OIL / ACRID ODOR, SPTY / SCAT SAT BLK / SCAT BRN STN, P / G FLUOR, G CUT

LS - CRM / TAN, VF / F XLN, OOL + FOSS IN PT, SCAT CHKY, PRED DNS

LS - CRM / LT GY, F / VF XLN, OOL, F / G INTOOL POR, SCAT FREE OOL IN TRAY, NS, NO ODOR, SCAT SUBCHKY W/ SCAT CHT - GY / WHT

SLTST + SS - LT / DK GY, SLT / VF QTZ GR, MIC, P / F INTGR POR, NS W/ SH - GY / SCAT GRN

LS - TAN / SCAT BRN + GY, F / M XLN, FOSS IN PT, PRED DNS, NS W/ SH - LT / MED GY

TG, C1-C5 10 100 1000

WORKING ON GAS EXTRACTOR

Vis: 51, Wt: 9.1
LCM: 1#

DST #1: 4,379'-4,426' (Marmaton)
Misrun - Could not get to bottom

DST #2: 4,379'-4,426' (Marmaton)

H
I
J
K
L

4200
4250
4300
4350

ROP (min/ft)

CFS @ 4235'

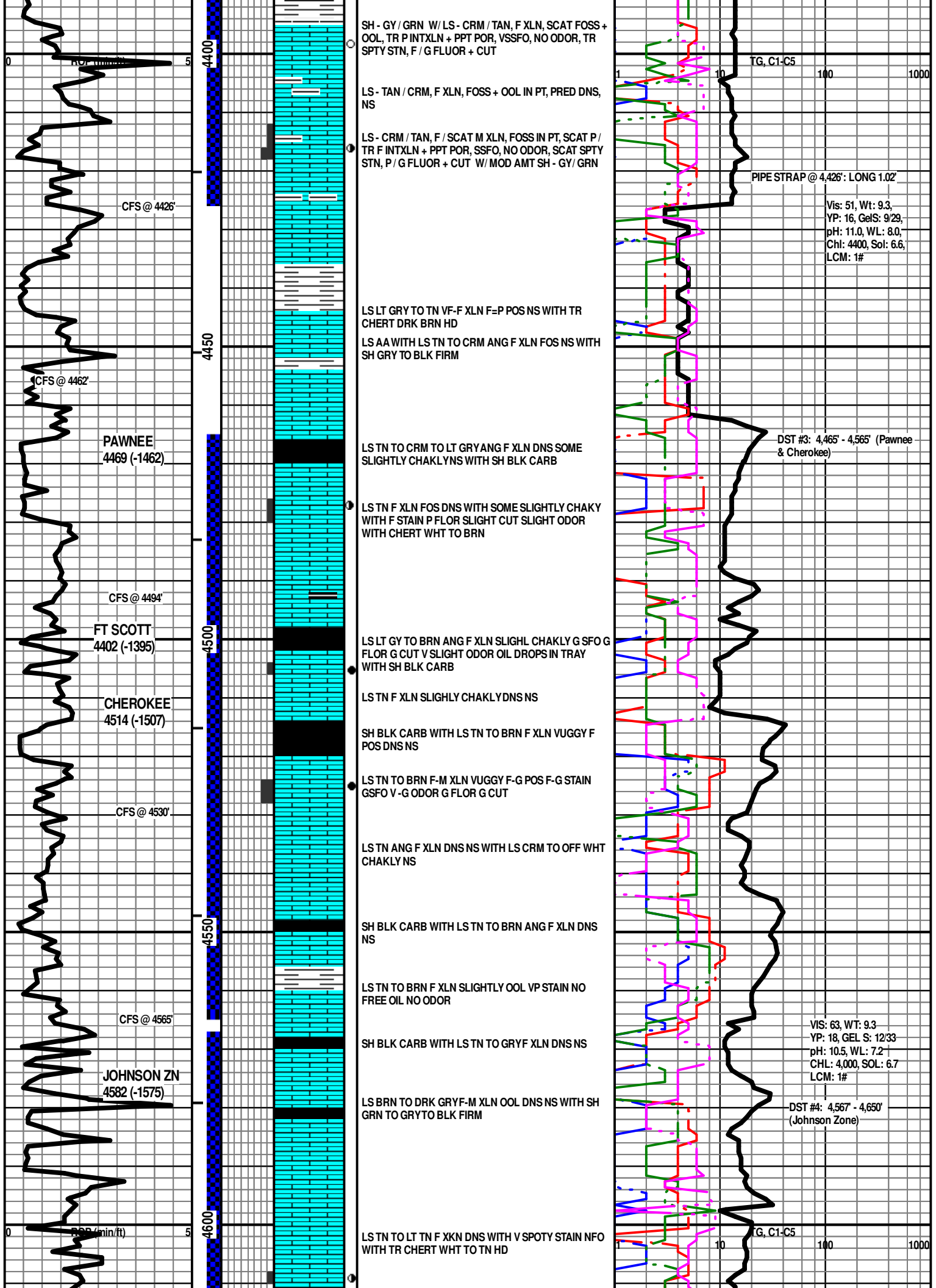
STARK SH
4246 (-1239)

HUSHPUCKNEY
4293 (-1286)

CFS @ 4312'

CFS @ 4356'
BASE KC
4359 (-1352)

MARMATON
4383 (-1376)



SH - GY / GRN W / LS - CRM / TAN, F XLN, SCAT FOSS + OOL, TR P INTXLN + PPT POR, VSSFO, NO ODOR, TR SPTY STN, F / G FLUOR + CUT

LS - TAN / CRM, F XLN, FOSS + OOL IN PT, PRED DNS, NS

LS - CRM / TAN, F / SCAT M XLN, FOSS IN PT, SCAT P / TR F INTXLN + PPT POR, SSFO, NO ODOR, SCAT SPTY STN, P / G FLUOR + CUT W / MOD AMT SH - GY / GRN

LS LT GRY TO TN VF-F XLN F=P POS NS WITH TR CHERT DRK BRN HD

LS AA WITH LS TN TO CRM ANG F XLN FOS NS WITH SH GRY TO BLK FIRM

LS TN TO CRM TO LT GRY ANG F XLN DNS SOME SLIGHTLY CHAKLYNS WITH SH BLK CARB

LS TN F XLN FOS DNS WITH SOME SLIGHTLY CHAKY WITH F STAIN P FLOR SLIGHT CUT SLIGHT ODOR WITH CHERT WHT TO BRN

LS LT GY TO BRN ANG F XLN SLIGHL CHAKLY G SFO G FLOR G CUT V SLIGHT ODOR OIL DROPS IN TRAY WITH SH BLK CARB

LS TN F XLN SLIGHTLY CHAKLY DNS NS

SH BLK CARB WITH LS TN TO BRN F XLN VUGGY F POS DNS NS

LS TN TO BRN F-M XLN VUGGY F-G POS F-G STAIN GSFO V-G ODOR G FLOR G CUT

LS TN ANG F XLN DNS NS WITH LS CRM TO OFF WHT CHAKLY NS

SH BLK CARB WITH LS TN TO BRN ANG F XLN DNS NS

LS TN TO BRN F XLN SLIGHTLY OOL VP STAIN NO FREE OIL NO ODOR

SH BLK CARB WITH LS TN TO GRYF XLN DNS NS

LS BRN TO DRK GRYF-M XLN OOL DNS NS WITH SH GRN TO GRYTO BLK FIRM

LS TN TO LT TN F XKN DNS WITH V SPOTY STAIN NFO WITH TR CHERT WHT TO TN HD

TG, C1-C5 100 1000

PIPE STRAP @ 4.426' LONG 1.02'

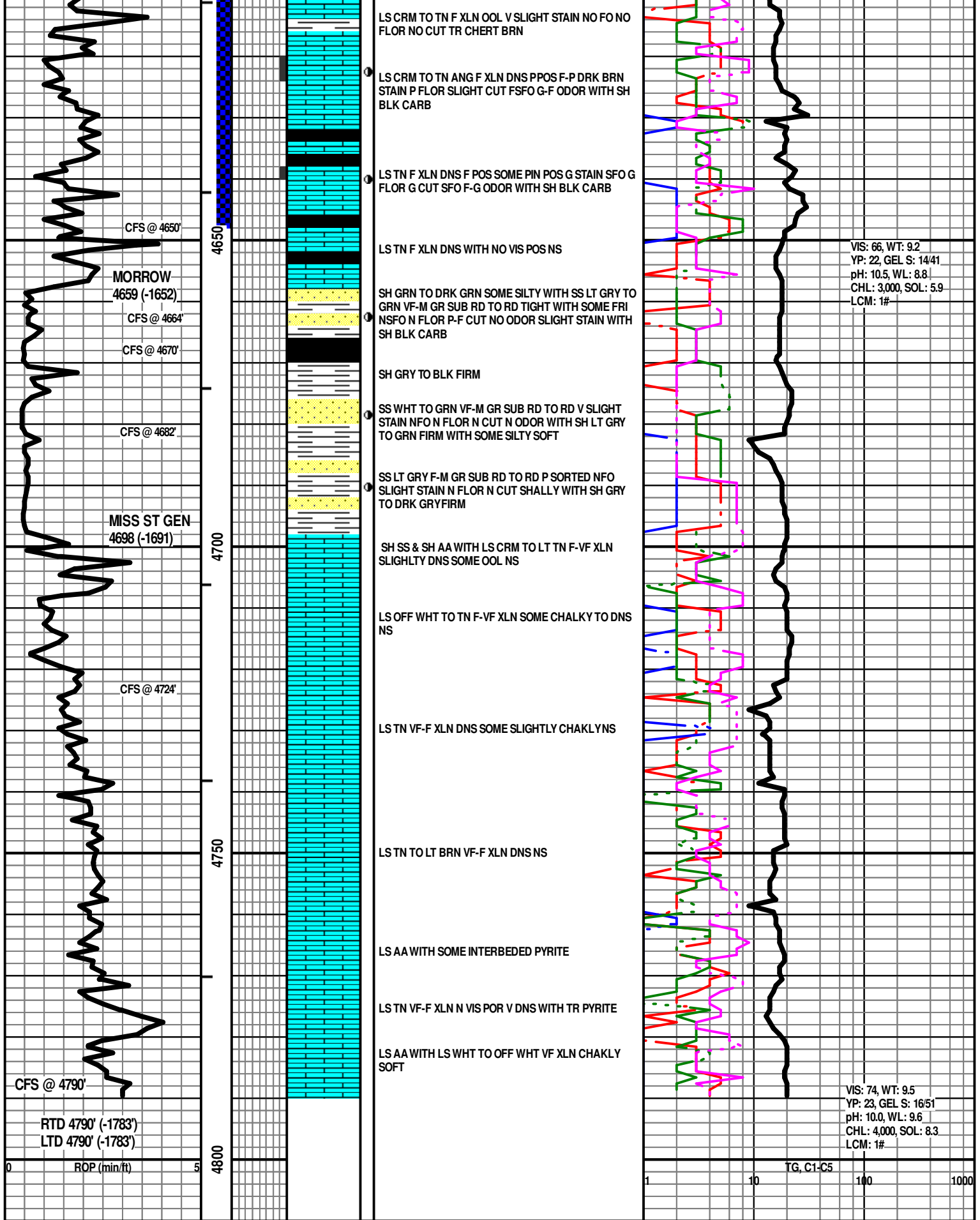
Vis: 51, Wt: 9.3, YP: 16, GelS: 9/29, pH: 11.0, WL: 8.0, Chl: 4400, Sol: 6.6, LCM: 1#

DST #3: 4.465' - 4.565' (Pawnee & Cherokee)

VIS: 63, WT: 9.3, YP: 18, GEL S: 12/33, pH: 10.5, WL: 7.2, CHL: 4,000, SOL: 6.7, LCM: 1#

DST #4: 4.567' - 4.650' (Johnson Zone)

TG, C1-C5 10 100 1000



LS CRM TO TN F XLN OOL V SLIGHT STAIN NO FO NO FLOR NO CUT TR CHERT BRN

LS CRM TO TN ANG F XLN DNS PPOS F-P DRK BRN STAIN P FLOR SLIGHT CUT FSFO G-F ODOR WITH SH BLK CARB

LS TN F XLN DNS F POS SOME PIN POS G STAIN SFO G FLOR G CUT SFO F-G ODOR WITH SH BLK CARB

LS TN F XLN DNS WITH NO VIS POS NS

SH GRN TO DRK GRN SOME SILTY WITH SS LT GRY TO GRN VF-M GR SUB RD TO RD TIGHT WITH SOME FRI NSFO N FLOR P-F CUT NO ODOR SLIGHT STAIN WITH SH BLK CARB

SH GRY TO BLK FIRM

SS WHT TO GRN VF-M GR SUB RD TO RD V SLIGHT STAIN NFO N FLOR N CUT N ODOR WITH SH LT GRY TO GRN FIRM WITH SOME SILTY SOFT

SS LT GRY F-M GR SUB RD TO RD P SORTED NFO SLIGHT STAIN N FLOR N CUT SHALLY WITH SH GRY TO DRK GRY FIRM

SH SS & SH AA WITH LS CRM TO LT TN F-VF XLN SLIGHTLY DNS SOME OOL NS

LS OFF WHT TO TN F-VF XLN SOME CHALKY TO DNS NS

LS TN VF-F XLN DNS SOME SLIGHTLY CHAKLYNS

LS TN TO LT BRN VF-F XLN DNS NS

LS AA WITH SOME INTERBEDED PYRITE

LS TN VF-F XLN N VIS POR V DNS WITH TR PYRITE

LS AA WITH LS WHT TO OFF WHT VF XLN CHAKLY SOFT

VIS: 66, WT: 9.2
YP: 22, GEL S: 14/41
pH: 10.5, WL: 8.8
CHL: 3,000, SOL: 5.9
LCM: 1#

VIS: 74, WT: 9.5
YP: 23, GEL S: 16/51
pH: 10.0, WL: 9.6
CHL: 4,000, SOL: 8.3
LCM: 1#

CFS @ 4650'

MORROW
4659 (-1652)

CFS @ 4664'

CFS @ 4670'

CFS @ 4682'

MISS ST GEN
4698 (-1691)

CFS @ 4724'

CFS @ 4790'

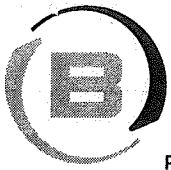
RTD 4790' (-1783')
LTD 4790' (-1783')

0 ROP (min/ft) 5

4800

TG, C1-C5

1 10 100 1000



BASICSM
ENERGY SERVICES
PRESSURE PUMPING & WIRELINE

1700 S. Country Estates Rd.
Liberal, Kansas 67905
Phone 620-624-2277

FIELD SERVICE TICKET
1717 05896 A

DATE OF JOB: 7-10-14 DISTRICT: 1717		NEW WELL <input checked="" type="checkbox"/> OLD WELL <input type="checkbox"/> PROD <input type="checkbox"/> INJ <input type="checkbox"/> WDW <input type="checkbox"/> CUSTOMER ORDER NO.:							
CUSTOMER: Stelbar		LEASE: Schroder # 145 WELL NO.:							
ADDRESS:		COUNTY: Scott STATE: KS							
CITY: STATE:		SERVICE CREW: E. Mondoza, R. Brown							
AUTHORIZED BY: J. Bennett		JOB TYPE: 742-898" Surface							
EQUIPMENT#	HRS	EQUIPMENT#	HRS	EQUIPMENT#	HRS	TRUCK CALLED	DATE	AM/PM	TIME
34726	8						7-10-14	AM	6:00
127462	8					ARRIVED AT JOB		AM	10:00
130463	8					START OPERATION		AM	3:00
19566	8					FINISH OPERATION		PM	4:00
						RELEASED		PM	5:00
						MILES FROM STATION TO WELL	100 mi		

CONTRACT CONDITIONS: (This contract must be signed before the job is commenced or merchandise is delivered).

The undersigned is authorized to execute this contract as an agent of the customer. As such, the undersigned agrees and acknowledges that this contract for services, materials, products, and/or supplies includes all of and only those terms and conditions appearing on the front and back of this document. No additional or substitute terms and/or conditions shall become a part of this contract without the written consent of an officer of Basic Energy Services LP.

SIGNED: _____
(WELL OWNER, OPERATOR, CONTRACTOR OR AGENT)

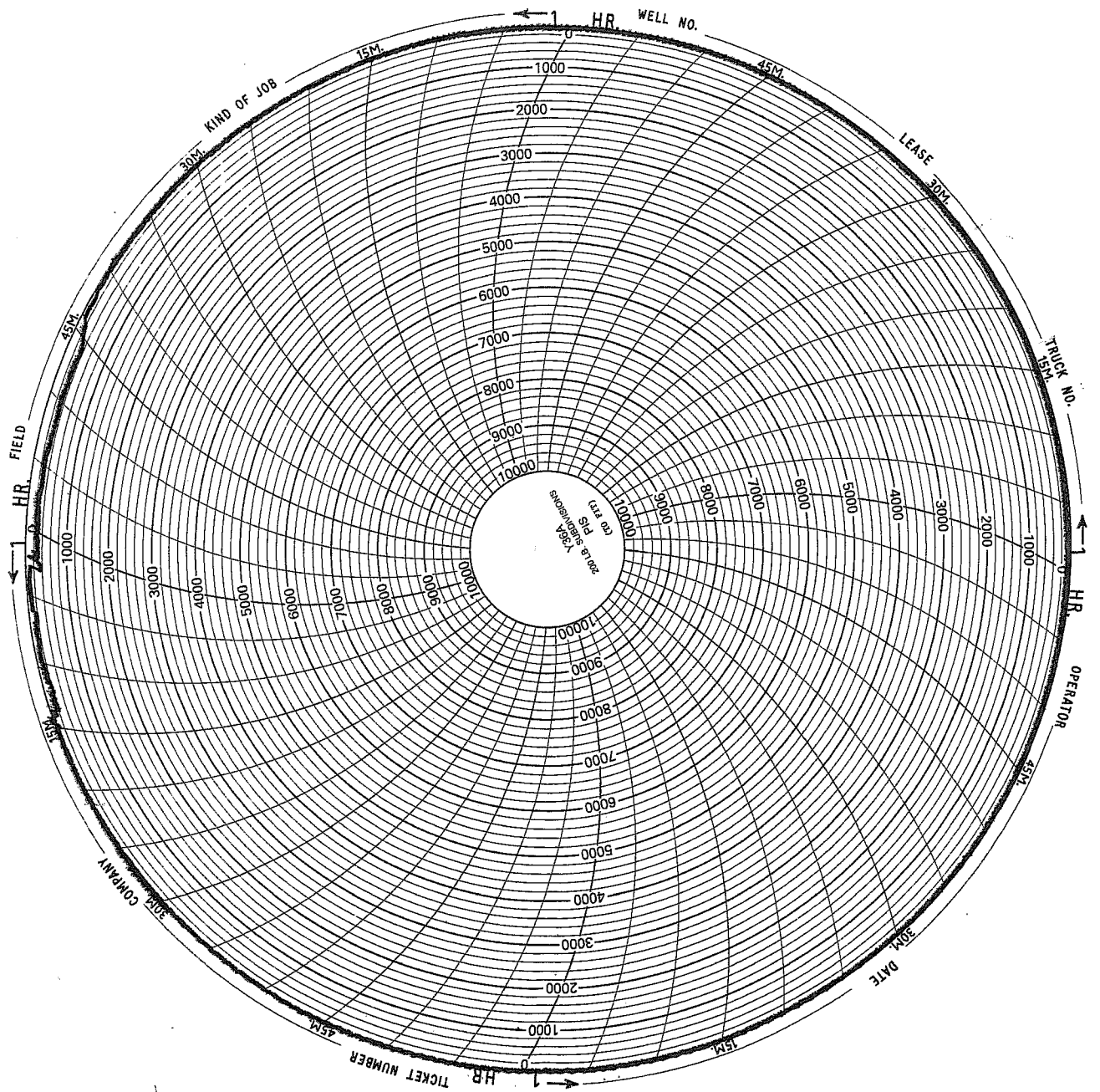
ITEM/PRICE REF. NO.	MATERIAL, EQUIPMENT AND SERVICES USED	UNIT	QUANTITY	UNIT PRICE	\$ AMOUNT	
CL110	Premium Plus	SK	300		4890 00	
CC109	Calcium Chloride	Lb	564		592 20	
CC102	Ceillake	Lb	76		281 20	
CF783	8 1/2" Galva' Plate	ea	1		170 00	
CF105	Plug	ea	1		225 00	
E101	Heavy Equipment Mileage	mi	200		1400 00	
CE240	Blending & Mixing Service	SK	300		420 00	
E113	Propanol & Bulk Delivery	gal	1410		3102 00	
CE200	Rimp Ditch 0-500'	Lhr	1		1000 00	
CE504	Plug Container	ea	1		250 00	
E100	Unit Mileage	mi	100		425 00	
S003	Service Supervisor	ea	1		175 00	
					SUB TOTAL	\$ 8424.51

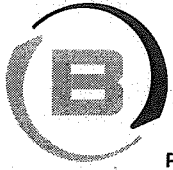
CHEMICAL / ACID DATA:			

SERVICE & EQUIPMENT	%TAX ON \$	
MATERIALS	%TAX ON \$	
TOTAL		

SERVICE REPRESENTATIVE: *Del Doria* THE ABOVE MATERIAL AND SERVICE ORDERED BY CUSTOMER AND RECEIVED BY: _____
(WELL OWNER OPERATOR CONTRACTOR OR AGENT)

FIELD SERVICE ORDER NO.





BASICSM
ENERGY SERVICES
PRESSURE PUMPING & WIRELINE

1700 S. Country Estates Rd.
Liberal, Kansas 67905
Phone 620-624-2277

PEA

FIELD SERVICE TICKET
1717 05940 A

DATE _____ TICKET NO. _____

DATE OF JOB 6-17-14 DISTRICT 1717		NEW WELL <input checked="" type="checkbox"/> OLD WELL <input type="checkbox"/> PROD <input type="checkbox"/> INJ <input type="checkbox"/> WDW <input type="checkbox"/> CUSTOMER ORDER NO.:							
CUSTOMER Stelbar		LEASE Schroder		WELL NO. 1-15					
ADDRESS		COUNTY Scott		STATE KS					
CITY STATE		SERVICE CREW Ruben - Carlos - Ismael							
AUTHORIZED BY Tyce Davis		JOB TYPE: 2.42 PTA							
EQUIPMENT#	HRS	EQUIPMENT#	HRS	EQUIPMENT#	HRS	TRUCK CALLED	DATE	AM	TIME
				78940	5		6-17-14		0030
				38750*	3	ARRIVED AT JOB		AM	0430
				19842	2	START OPERATION		AM	0544
				27808 ✓	3	FINISH OPERATION		AM	0855
				37724	2	RELEASED		AM	0900
						MILES FROM STATION TO WELL	100		

CONTRACT CONDITIONS: (This contract must be signed before the job is commenced or merchandise is delivered).

The undersigned is authorized to execute this contract as an agent of the customer. As such, the undersigned agrees and acknowledges that this contract for services, material products, and/or supplies includes all of and only those terms and conditions appearing on the front and back of this document. No additional or substitute terms and/or conditions shall become a part of this contract without the written consent of an officer of Basic Energy Services LP.

SIGNED: _____
(WELL OWNER, OPERATOR, CONTRACTOR OR AGENT)

ITEM/PRICE REF. NO.	MATERIAL, EQUIPMENT AND SERVICES USED	UNIT	QUANTITY	UNIT PRICE	\$ AMOUNT	
CL 103 ✓	60/40 Poz	SK	290		3480.00	
CC 200 ✓	Cement Gel	Lb	500		125.00	
CC 102 ✓	Celloflake	Lb	73		276.00	
E 101	Heavy Equipment M. lease	M.	200		1400.00	
CE 240	Blending & Mixing Service Charge	SK	290		406.00	
E 113	Proppant & Bulk Delivery Charges	TM	1250		2750.00	
CE 203	Depth Charge 2001-3000'	4hrs	1		1800.00	
E 100	Pick up Charge	M.	100		425.00	
S003	Service Supervisor	Ea	1		175.00	
T105	Cement Data	Ea	1		550.00	
					SUB TOTAL	7966.00

CHEMICAL / ACID DATA:			

SERVICE & EQUIPMENT	%TAX ON \$	
MATERIALS	%TAX ON \$	
TOTAL		

SERVICE REPRESENTATIVE **Ruben H. [Signature]**

THE ABOVE MATERIAL AND SERVICE ORDERED BY CUSTOMER AND RECEIVED BY: _____
(WELL OWNER OPERATOR CONTRACTOR OR AGENT)

