

ADVANTAGE ELEVATIONS

OIL FIELD SURVEYORS

BOX 8604 - PRATT, KS 67124
(620) 672-6491

618141

INVOICE NO.

VAL ENERGY INC

OPERATOR

2

NO.

LUCILLE SPICER

FARM

Barber

COUNTY

34

S

30s

T

12w

R

C NE NW

LOCATION

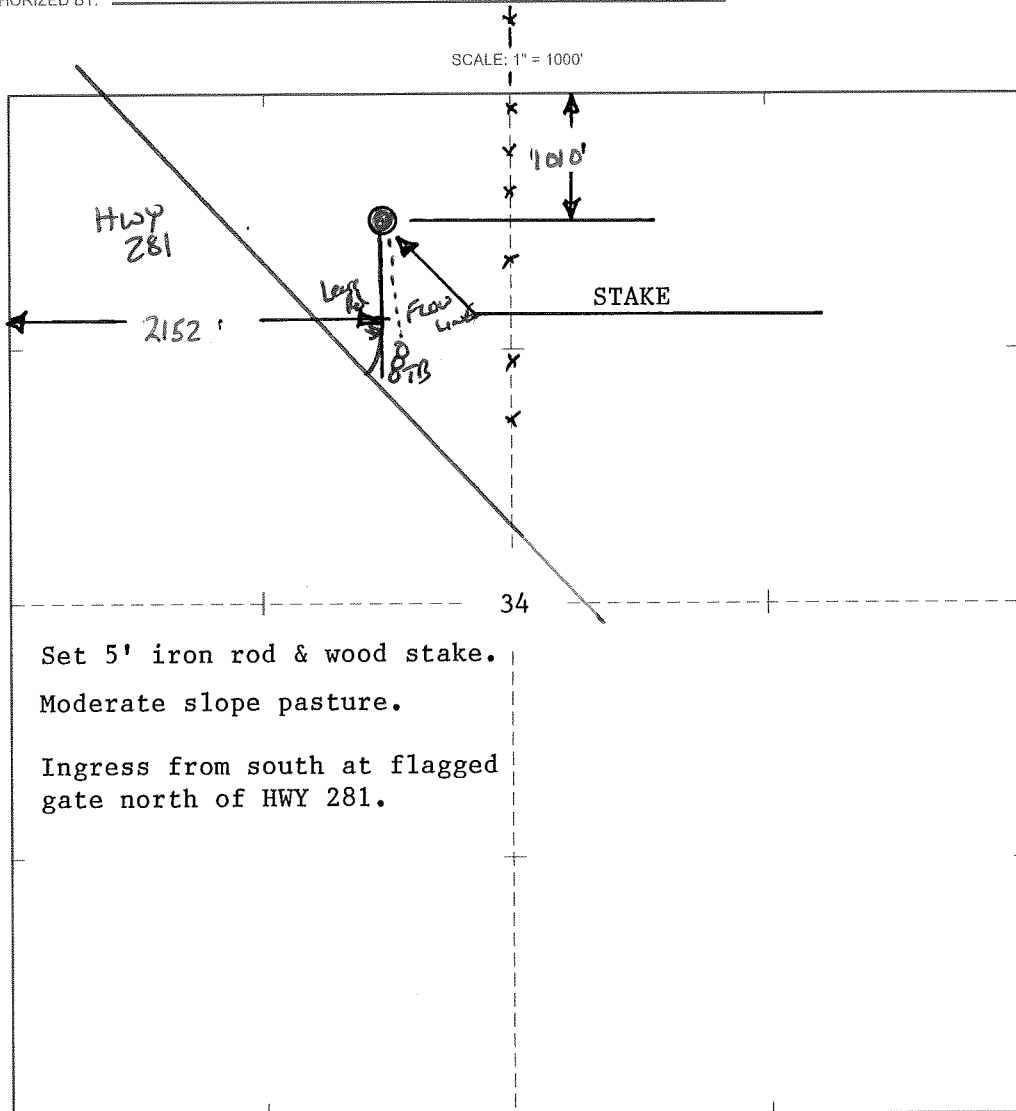
ELEVATION: 1672 GR



VAL ENERGY INC
125 N Market, Ste 1710
Wichita, KS 67202

Todd Allam

AUTHORIZED BY:



DATE STAKED: 6/18/14