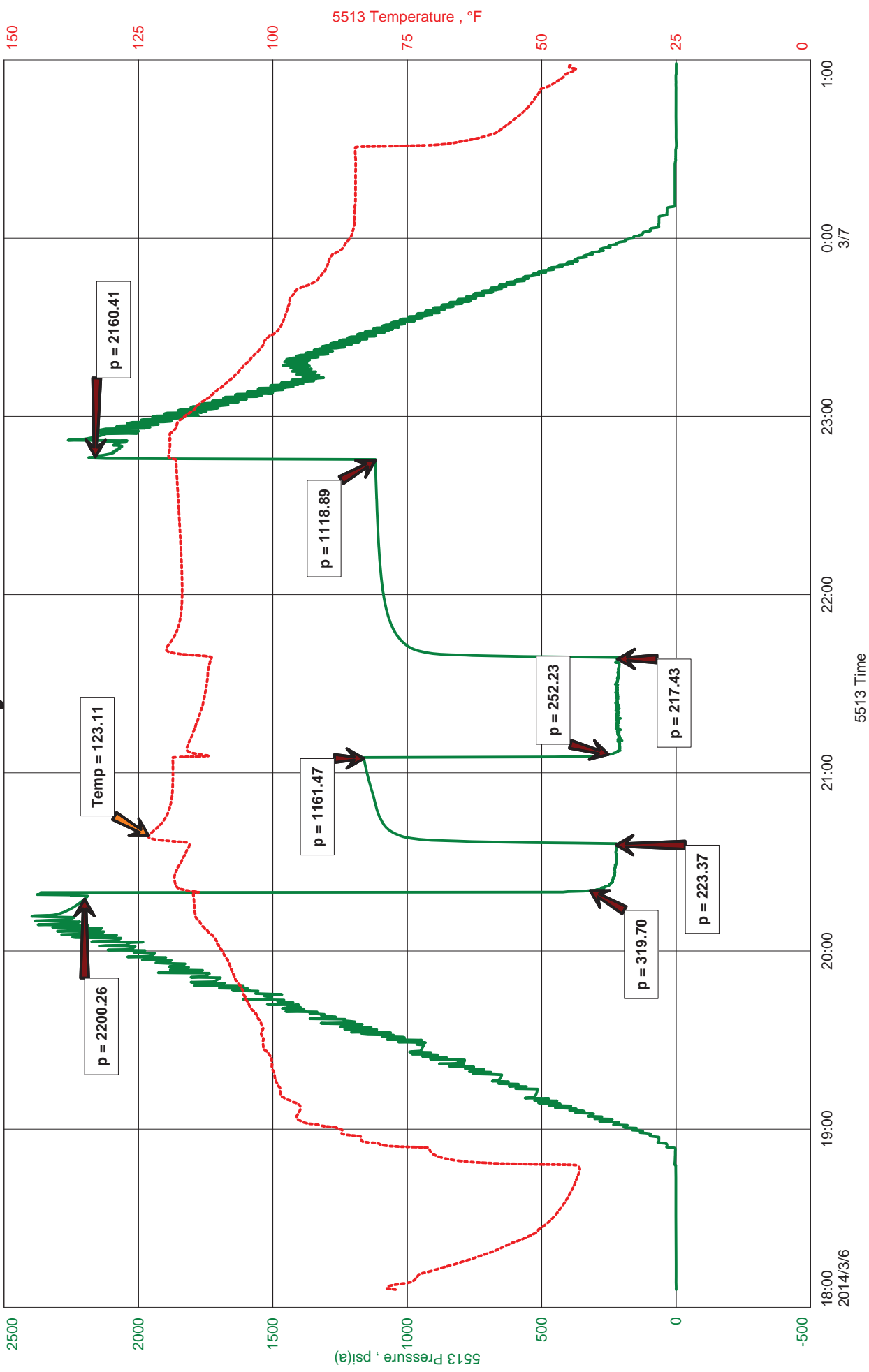
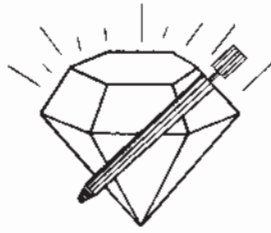


L B Exploration, Inc
DST #3 Miss 4517-4582
Start Test Date: 2014/03/06
Final Test Date: 2014/03/07

Boyd #2
Formation: Mississippi
Pool: Wildcat
Job Number: K095

Boyd #2





DIAMOND TESTING
 P. O. Box 157
HOISINGTON, KANSAS 67544
 (316) 653-7550
GAS VOLUME REPORT

Company L B Exploration, Inc. Lease & Well No. Boyd #2
 Date 3-6-14 Sec. 34 Twp. 32S Rge. 13W Location _____ County Barber State KS
 Drilling Contractor Ninnescah #101 Formation Mississippi DST No. 3
 Remarks: Gas to Surface in 3 Minutes

INITIAL FLOW

Time O'Clock	Orifice Size	Gauge	CF/D
5 min	1/2 in.	28# in.	222,000
10 min	1/2 in.	40# in.	285,000
15 min	1/2 in.	40# in.	285,000
	in.	in.	
	in.	in.	
	in.	in.	
	in.	in.	
	in.	in.	
	in.	in.	
	in.	in.	

FINAL FLOW IW

Time O'Clock	Orifice Size	Gauge	CF/D
10 min	1/2 in.	45# in.	311,000
20 min	1/2 in.	48# in.	326,000
30 min	1/2 in.	48# in.	326,000
	in.	in.	
	in.	in.	
	in.	in.	
	in.	in.	
	in.	in.	
	in.	in.	
	in.	in.	

FINAL FLOW



JASON MCLEMORE

CELL # 620-617-0527

General Information

Company Name	L B Exploration, Inc	Job Number	K095
Contact	Mike Petermann	Representative	Jason McLemore
Well Name	Boyd #2	Well Operator	L B Exploration, Inc
Unique Well ID	DST #3 Miss 4517-4582	Prepared By	Jason McLemore
Surface Location	34-32s-13w-Barber	Qualified By	Steve Petermann
Field	Wildcat	Test Unit	#7
Well Type	Vertical		

Test Information

Test Type	Drill Stem Test	Representative	Jason McLemore
Formation	Mississippi	Well Operator	L B Exploration, Inc
Well Fluid Type	01 Oil	Report Date	2014/03/07
Test Purpose (AEUB)	Initial Test	Prepared By	Jason McLemore
Start Test Date	2014/03/06	Start Test Time	18:06:00
Final Test Date	2014/03/07	Final Test Time	01:00:00

Test Results

RECOVERED:

150 Gassy Muddy Oil, 50% Gas, 25% Oil, 25% Mud
150 TOTAL FLUID



DIAMOND TESTING
P.O. Box 157
HOISINGTON, KANSAS 67544
(800) 542-7313
DRILL-STEM TEST TICKET
FILE: boyd2dst3

TIME ON: 6:06 PM
TIME OFF: 1:00 AM

Company LB Exploration, Inc Lease & Well No. Boyd #2
Contractor Ninnescah Charge to LB Exploration, Inc.
Elevation GL 1758 Formation Mississippi Effective Pay _____ Ft. Ticket No. K095
Date 3-6-14 Sec. 34 Twp. _____ 32 S Range _____ 13 W County _____ Barber State KANSAS
Test Approved By Steve Petermann Diamond Representative Jason McLemore

Formation Test No. 3 Interval Tested from 4517 ft. to 4582 ft. Total Depth 4582 ft.
Packer Depth 4512 ft. Size 6 3/4 in. Packer depth _____ ft. Size 6 3/4 in.
Packer Depth 4517 ft. Size 6 3/4 in. Packer depth _____ ft. Size 6 3/4 in.

Depth of Selective Zone Set _____

Top Recorder Depth (Inside) 4505 ft. Recorder Number 5513 Cap. 5000 P.S.I.
Bottom Recorder Depth (Outside) 4506 ft. Recorder Number 5588 Cap. 6000 P.S.I.
Below Straddle Recorder Depth _____ ft. Recorder Number _____ Cap. _____ P.S.I.

Mud Type Chemical Viscosity 56 Drill Collar Length 0 ft. I.D. 2 1/4 in.
Weight 9.5 Water Loss 11.2 cc. Weight Pipe Length 0 ft. I.D. 2 7/8 in.
Chlorides 8000 P.P.M. Drill Pipe Length 4492 ft. I.D. 3 1/2 in.
Jars: Make STERLING Serial Number NA Test Tool Length 25 ft. Tool Size 3 1/2-IF in.
Did Well Flow? No Reversed Out No Anchor Length 65 ft. Size 4 1/2-FH in.
Main Hole Size 7 7/8 Tool Joint Size 4 1/2 XH in. 32' DP in Anchor Surface Choke Size 1 in. Bottom Choke Size 5/8 in.

Blow: 1st Open: Strong, BOB in 10 Sec., Gas To Surface in 3 Min., Gaging Gas. No Blowback
2nd Open: Strong, BOB on Open, Gaging Gas. Blowback Built to 9"

Recovered 150 ft. of Gassy Muddy Oil, 50% Gas, 25% Oil, 25% Mud
Recovered 150 ft. of TOTAL FLUID
Recovered _____ ft. of _____
Recovered _____ ft. of _____

Recovered _____ ft. of _____	Price Job
Recovered _____ ft. of _____	Other Charges
Remarks: _____	Insurance
_____	Total

Time Set Packer(s) 8:20 PM A.M. P.M. Time Started Off Bottom 10:35 PM A.M. P.M. Maximum Temperature 123

Initial Hydrostatic Pressure..... (A) 2200 P.S.I.
Initial Flow Period..... Minutes 15 (B) 320 P.S.I. to (C) 223 P.S.I.
Initial Closed In Period..... Minutes 30 (D) 1161 P.S.I.
Final Flow Period..... Minutes 30 (E) 252 P.S.I. to (F) 217 P.S.I.
Final Closed In Period..... Minutes 60 (G) 1119 P.S.I.
Final Hydrostatic Pressure..... (H) 2160 P.S.I.

Diamond Testing shall not be liable for damages of any kind to the property or personnel of the one for whom a test is made or for any loss suffered or sustained, directly or indirectly, through the use of its equipment, or its statement or opinion concerning the result of any test. Tools lost or damaged in the hole shall be paid for at cost by the party for whom the test is made.