

KEVIN L. KESSLER
CONSULTING PETROLEUM GEOLOGIST
 (316) 522-7338

OPERATOR : MULL DRILLING COMPANY INC.		ELEVATION
LEASE : ROSS	WELL # : 1 - 32	KB : 2617'
LOCATION : 2375 FSL & 2262 FEL		GL : 2612'
SEC: 32	TWP : 15 S	RGE : 26 W
COUNTY : GOVE		STATE : KANSAS

CONTRACTOR : WW DRILLING RIG # 10	COMP : 05 / 02 / 2014
RTD : 4600	LOG TD : 4601
SAMPLES SAVED FROM : 3700	TO: RTD
GEOLOGICAL SUPERVISION FROM : 3700	TO : RTD
MUD UP : 3600	TYPE MUD : CHEMICAL

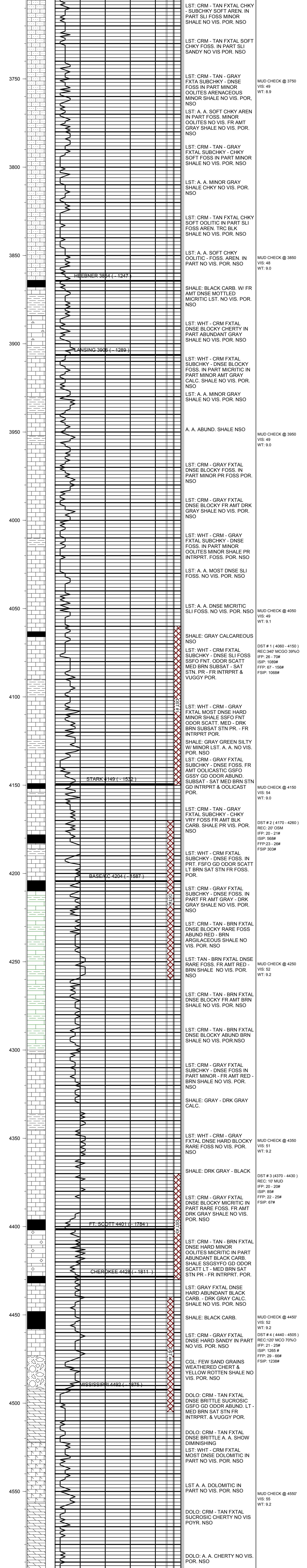
FORMATION	TOP	SAMPLE	DATUM	TOP	LOG	DATUM	STRUCT. COMP.
HEEBNER	3864		- 1247	3864		- 1247	+ 10
LANSING	3906		- 1289	3906		- 1289	+ 08
STARK	4149		- 1532	4149		- 1532	+ 10
BASE/ KC	4204		- 1587	4204		- 1587	+ 12
FORT SCOTT	4401		- 1784	4401		- 1784	+ 21
CHEROKEE	4428		- 1811	4324		- 1811	+ 22
MISSISSIPPI	4492		- 1875	4492		- 1875	+ 26

REFERENCE WELL FOR STRUCTURAL COMPARISON :

MULL DRLG CO INC # 1 - 32 BABCOCK ' B' SEC 32 - T 15 S - R 26 W GOVE COUNTY KANSAS

CASING RECORD
 SURFACE :
 8 5/8" @ 216'
 PRODUCTION :
 5 1/2" @ 4600'

ELECTRICAL SURVEYS:
 CDL/CNL
 DIL
 MICRO
 SONIC



COMMENTS:

5 1/2" PRODUCTION CASING WAS SET TO FURTHER EVALUATE
 THE PRODUCTIVITY OF THIS WELL

KEVIN L. KESSLER