

# Timothy G. Pierce

## Petroleum Geologist

### GEOLOGIST'S REPORT DRILLING TIME AND SAMPLE LOG

COMPANY R & B Oil and Gas, Inc.

LEASE Dohm 'B' #1

FIELD Sharon

LOCATION NW SW SE (990' FSL & 2310' FEL)

SEC 23 TWSP 32S RGE 10W

COUNTY Barber STATE Kansas

CONTRACTOR Hardt Drilling Rig #1

SPUD 3-10-2014 COMP 3-19-2014

RTD 4795 LTD 4801

MUD UP 2840 TYPE MUD Chemical

SAMPLES SAVED FROM 3400 TO RTD

DRILLING TIME KEPT FROM 3400 TO RTD

SAMPLES EXAMINED FROM 3400 TO RTD

GEOLOGICAL SUPERVISION FROM 3435 to RTD

GEOLOGIST ON WELL Tim Pierce

#### ELEVATIONS

KB 1448'

DF \_\_\_\_\_

GL 1438'

Measurements Are All  
From Kelly Bushing

#### CASING

CONDUCTOR \_\_\_\_\_

SURFACE 8-5/8" at 268'

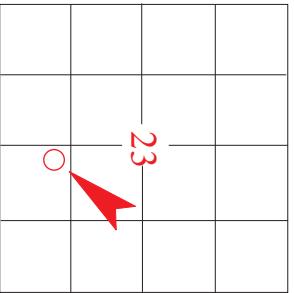
PRODUCTION 5-1/2" at 4784'

#### ELECTRICAL SURVEYS

DIL / CN-CD

Pioneer Energy Svcs

FORMATION TOPS	ELECTRIC LOG	SAMPLE
Heebner Sh.	3412 (-1964)	3406 (-1958)
Lansing	3644 (-2196)	3638 (-2190)
Stark Sh.	4086 (-2638)	4080 (-2632)
Cherokee Sh.	4314 (-2866)	4309 (-2861)
Mississippi	4353 (-2905)	4347 (-2899)
Viola	4678 (-3230)	4664 (-3216)
Simpson	4758 (-3310)	4752 (-3304)



API # 15-007-24,142

**REMARKS** Drill stem results indicate possible production from the Mississippi from 4373'- 4464', therefore production casing was run to test the well further.

A drill stem test covering a show in the Viola indicated poor reservoir development.

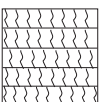
A show of oil and gas was noted in the Chattanooga Shale from 4834'- 4869'

A show in the KC Swope was tested with negative results.

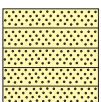
No other zones of interest were indicated by sample or electric logs.

Timothy G. Pierce

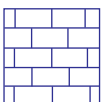
### LEGEND



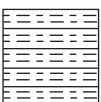
Anhydrite



Sandstone



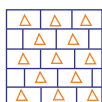
Limestone



Shale



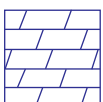
Carb Sh



Cherty LS



Chert



Dolomite

DRILLING TIME IN  
MINUTES PER FOOT

Rate of Penetration Decreases

DEPTH

LITHOLOG

GAS SCALE

SAMPLE DESCRIPTION

REMARKS



Vis 48  
Wt. 9.2

50

3700

50

Vis 50  
Wt. 9.4

3800

SS - lt gr-wht, fn grained, semi-friable

LS - tan, fn xtln, dense

Sh - dk gr, slt carb, scat pyrite

Lansing  
3638 (-2190)

LS - gr-tan-wht, fn xtln to slt chalky

LS - tan-lt gr, fn xtln, slt fos, v finely oolitic, fair vug and pinpoint por, no vis show, no odor, dull fluor

LS - tan and lt gr, fn xtln, dense

LS - lt-dk gr, fn xtln, dense

Sh - gr-blk

LS - tan-wht, fn xtln, slt fos, f-gd pinpoint and vug por, no show

LS - lt and dk gr, fn xtln, dense

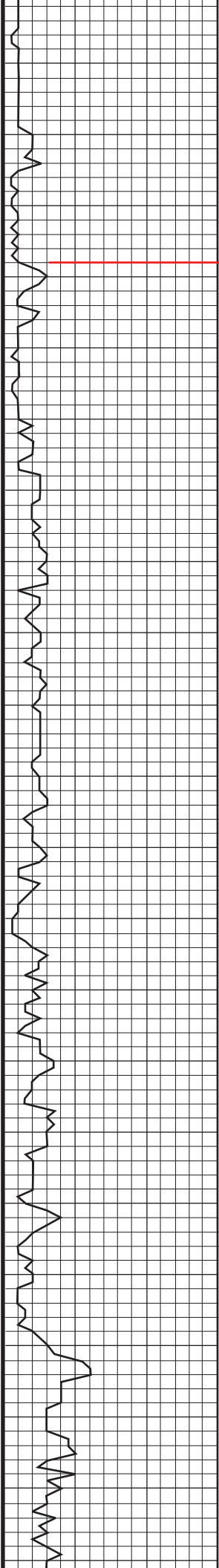
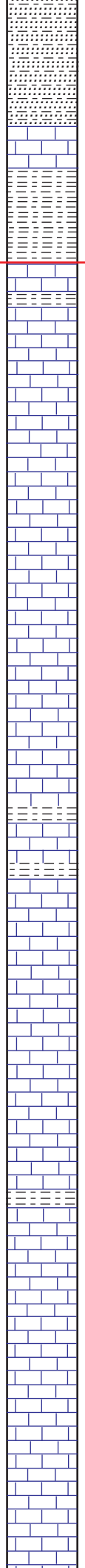
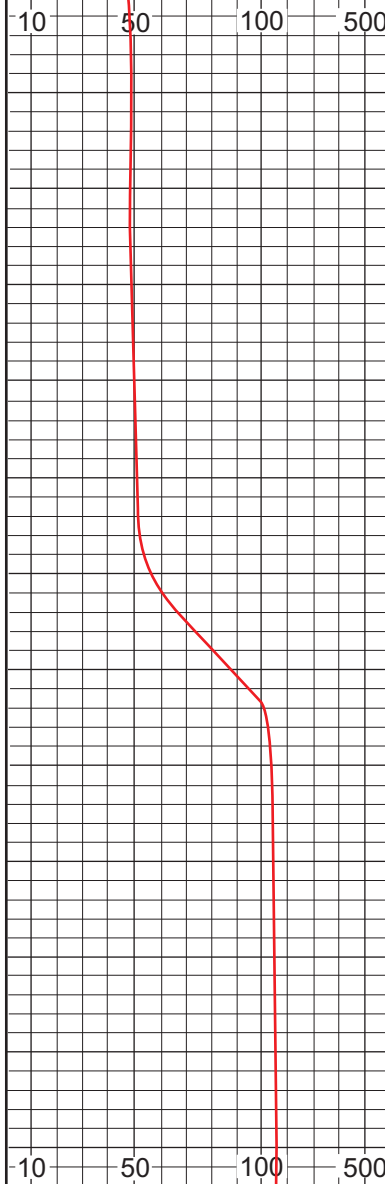
Sh - gr-blk

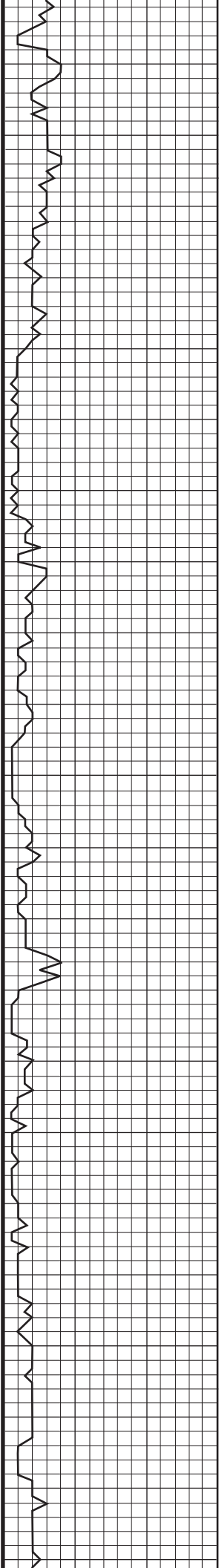
LS - lt gr-tan, fn xtln, fos, f-gd vug and fos cast por, no show

Re-Zero unit

LS - lt and dk gr, fn xtln, dense

LS - lt-dk gr, fn xtln, dense





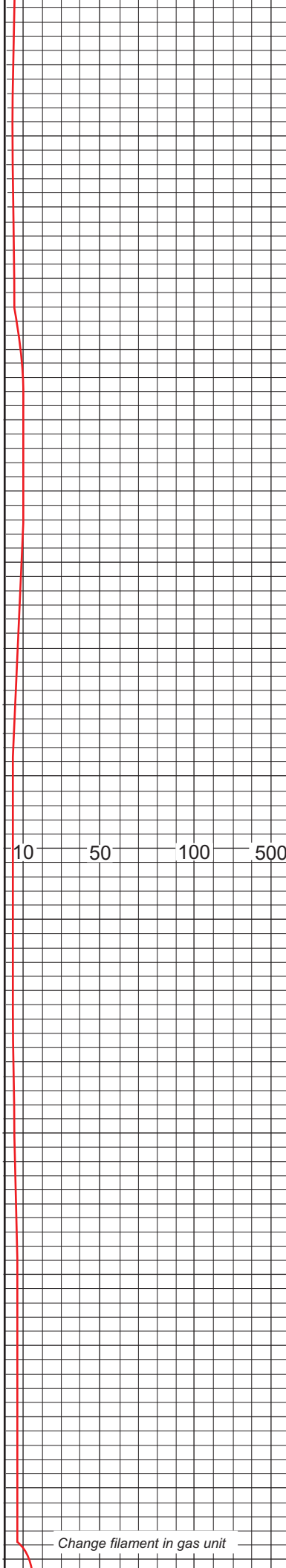
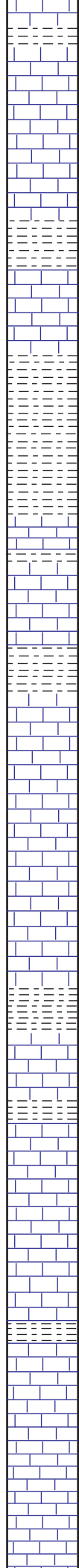
50  
Vis 55  
Wt. 9.3

Vis 47  
Wt. 9.4  
Filt 9.2  
Mud Co.

Vis 44  
Wt. 9.2

Vis 48  
Wt. 9.2

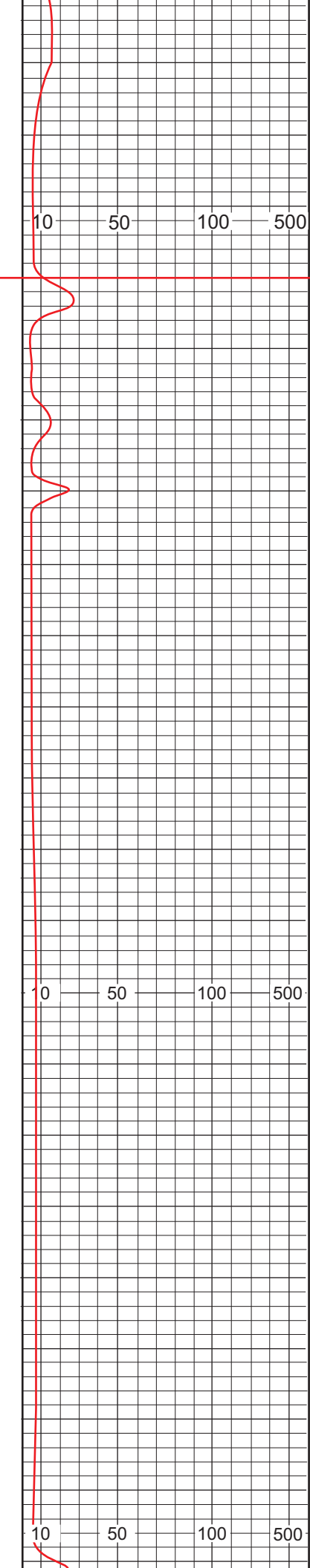
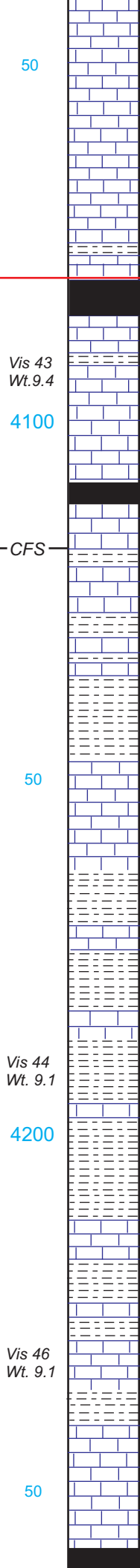
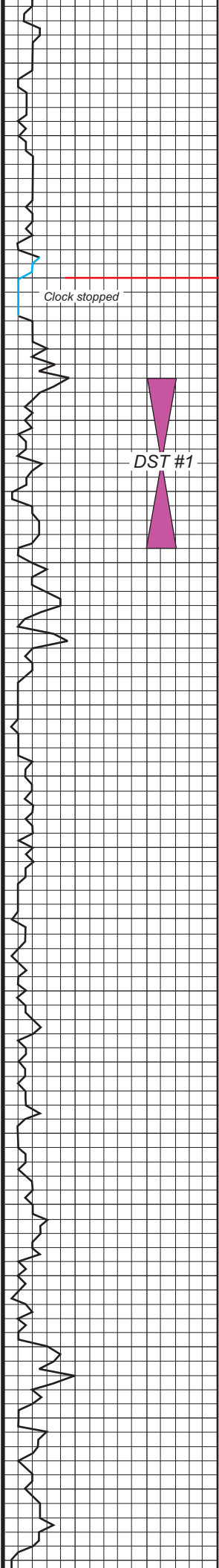
Vis 46  
Wt. 9.2



10 50 100 500

Sh - blk-gr  
LS - dk gr, fn xtl, dense  
Sh - blk-gr  
LS - dk gr, fn xtl, dense  
Sh - blk-gr, scat pyrite  
LS - dk gr, fn xtl, slt fos, dense  
Sh - blk-gr  
LS - tan-lt gr, fn xtl, gd int xtl  
and vug por, no show  
LS - tan-cream, fn xtl, fos, gd  
vug and fos cast por, no show  
Sh - gr  
LS - tan-brn, dense  
LS - tan-wht, fn xtl, fos, gd  
and fos cast por, scat chalk, no  
show  
Sh - gr-blk  
LS - lt gr-tan-wht, fn xtl, dense  
w/ scat chalk  
LS - tan-brn-gr, fn xtl, fos, fair  
fos cast and int xtl por, no show

Change filament in gas unit



LS - tan-brn-gr, fn xtln, slt fos, scat fair pinpoint por, pred dense

LS - tan-brn-gr, dense

Sh - blk carb

LS - tan-brn, dense

Sh - gr-blk

LS - tan-brn-cream, fn xtln, scat p-f pinpoint to int xtln por, widely scat very small pieces w/ bright fluor, no odor, no vis stain

Sh - blk carb

LS - tan-brn, fn xtln, dense

LS - tan, fn xtln, dense

Sh - blk-gr, silty in part, slt pyritic

LS - dk gr-blk, fn xtln, dense

Sh - gr-blk, scat green

LS - dk gr-blk, dense

Sh - gr-blk

LS - dk gr-blk, dense

Sh - blk-gr-red

LS - gr-tan, fn xtln, dense

Sh - blk

Sh - gr

LS - gr-tan, dense

Sh - gr-blk

LS - tan-wht-lt gr, fn xtln, dense

**Stark Sh.**  
4080 (-2632)

DST #1  
4094-4118  
30-30-30-30

1st open - vwv blow incr to 1"

2nd open - no blow

Rec - 124' Wtr  
Chlorides 95K PPM

IFP: 15-45#  
FFP: 49-71#  
SIP: 1537-1501#  
HP: 2133-2009#  
BHT: 113 degrees

50

Vis 43  
Wt. 9.4

4100

DST #1

CFS

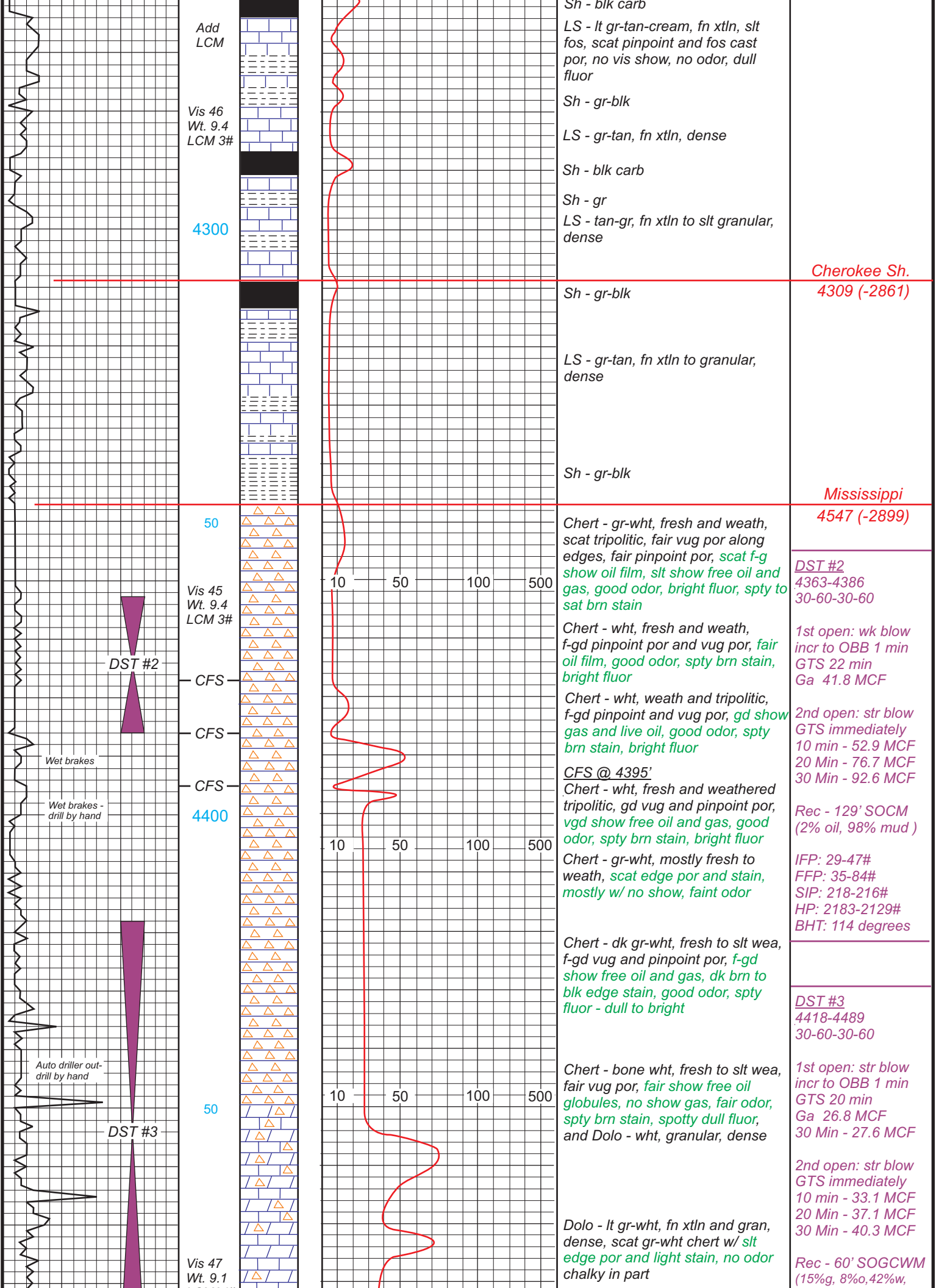
50

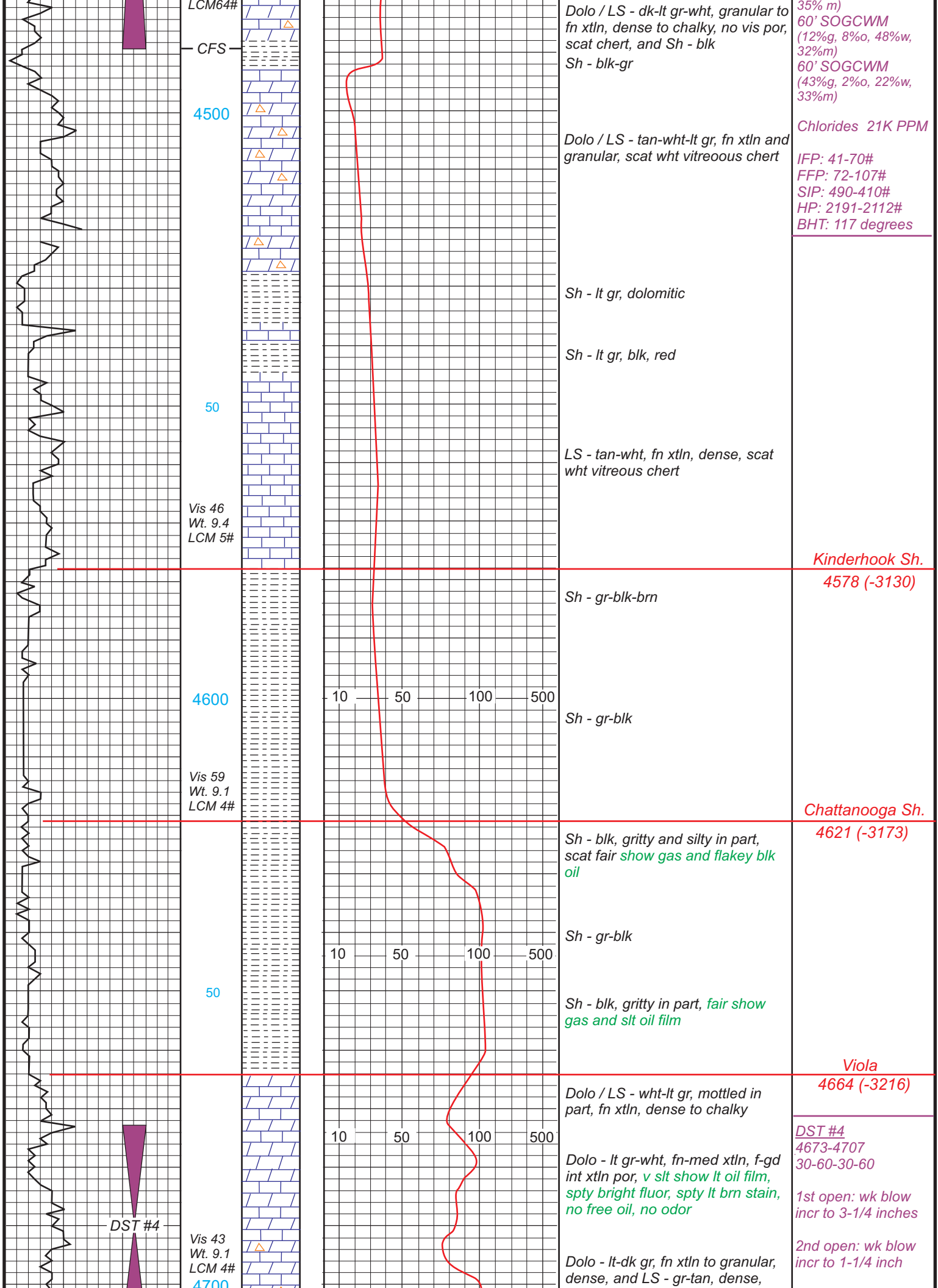
Vis 44  
Wt. 9.1

4200

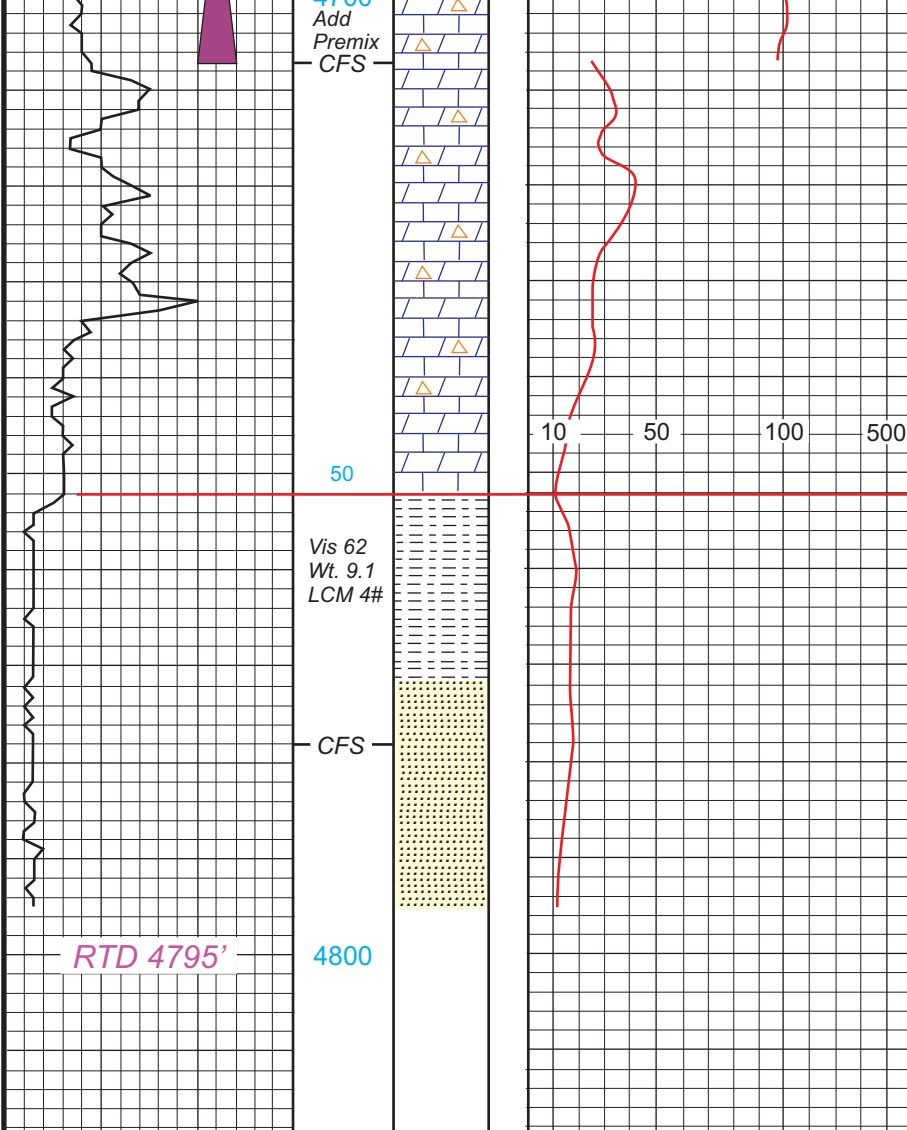
Vis 46  
Wt. 9.1

50





Rec: 20' Mud / trc oil



scat gr-wht chert

IFP: 16-20#  
FFP: 19-26#  
SIP: 209-150#  
HP: 2299-2299#  
BHT: 116 degrees

Dolo - gr-brn, fn xtl and granular, dense

Dolo - gr-brn, fn xtl and granular, dense, scat gr and wht vitreous chert

LS - wht-gr, mottled in part, fn-med xtl, dense to chalky

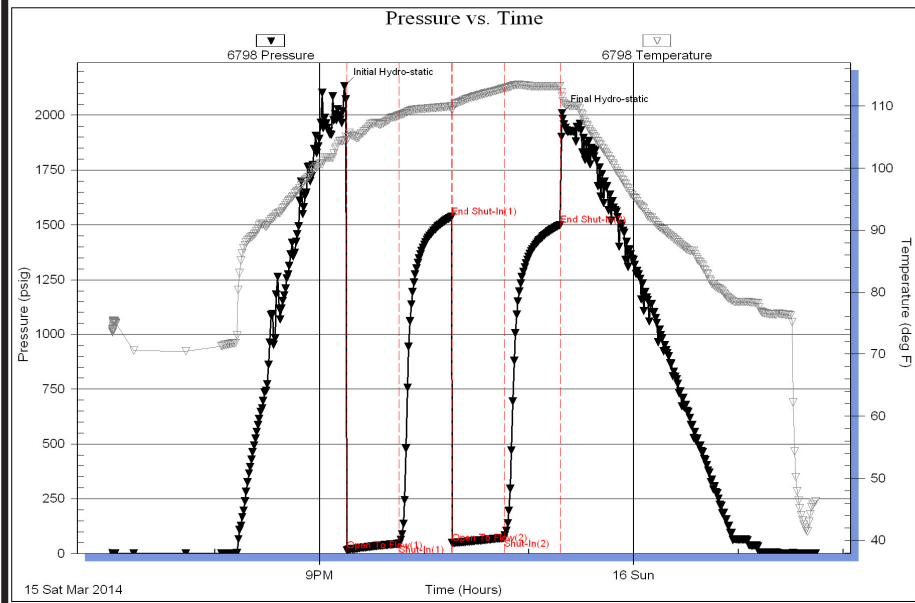
Simpson Sh.  
4752 (-3304)

Sh - blk-gr-green

SS - brn-wht-clear, fn grained, sub rounded, well sorted, semi-friable to friable, no show

SS - wht-clear, fn grained, friable, gd int gran por, no show

Serial #: 6798 Inside R & B Oil & Gas Dohm B 1 DST Test Number: 1



DST #1  
4094-4118  
30-30-30-30

1st open - vwv blow  
incr to 1"

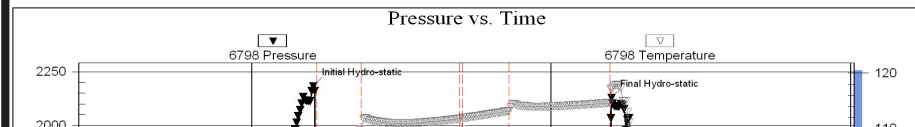
2nd open - no blow

Rec - 124' Wtr  
Chlorides 95K PPM

IFP: 15-45#  
FFP: 49-71#  
SIP: 1537-1501#  
HP: 2133-2009#  
BHT: 113 degrees

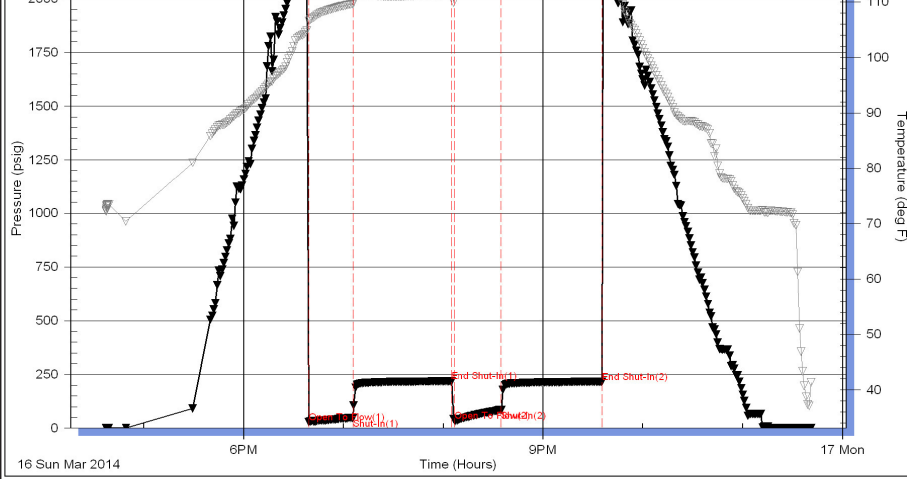
Trilobite Testing, Inc Ref. No: 51967 Printed: 2014.03.16 @ 01:58:01

Serial #: 6798 Inside R & B Oil & Gas Dohm B 1 DST Test Number: 2



DST #2  
4363-4386  
30-60-30-60





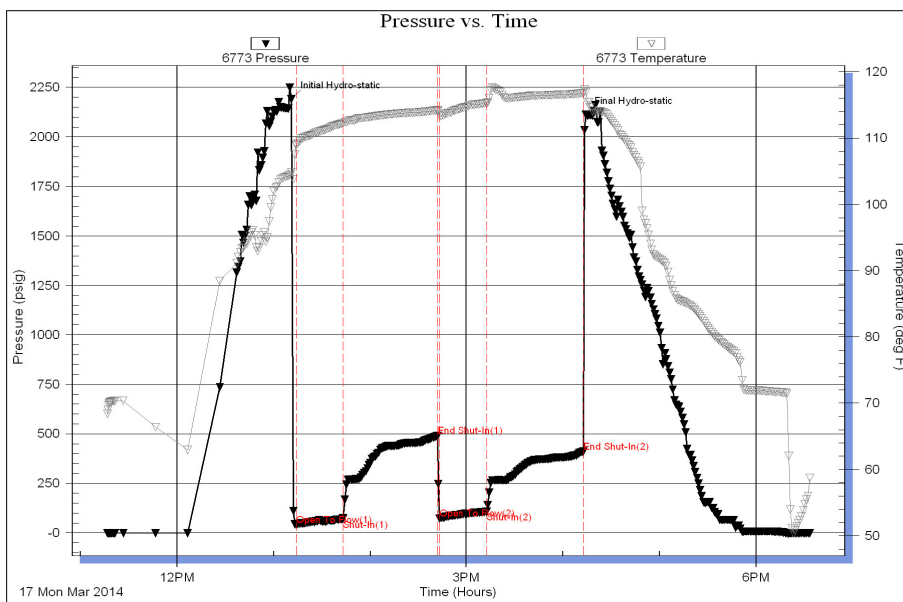
1st open: wk blow  
incr to OBB 1 min  
GTS 22 min  
Ga 41.8 MCF

2nd open: str blow  
GTS immediately  
10 min - 52.9 MCF  
20 Min - 76.7 MCF  
30 Min - 92.6 MCF

Rec - 129' SOCM  
(2% oil, 98% mud)

IFP: 29-47#  
FFP: 35-84#  
SIP: 218-216#  
HP: 2183-2129#  
BHT: 114 degrees

Serial #: 6773 Outside R & B Oil & Gas Dohm B 1 DST Test Number: 3



DST #3  
4418-4489  
30-60-30-60

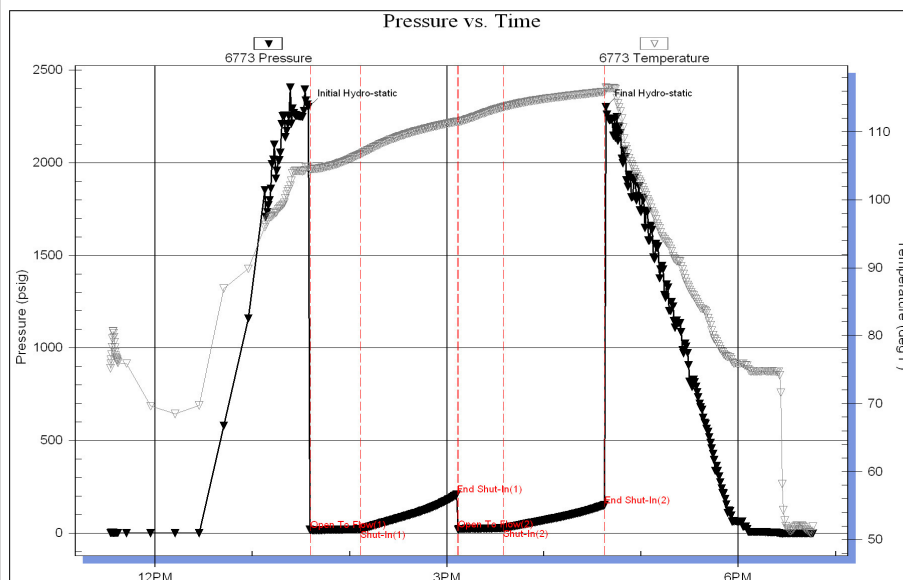
1st open: str blow  
incr to OBB 1 min  
GTS 20 min  
Ga 26.8 MCF  
30 Min - 27.6 MCF

2nd open: str blow  
GTS immediately  
10 min - 33.1 MCF  
20 Min - 37.1 MCF  
30 Min - 40.3 MCF

Rec - 60' SOGCWM  
(15%g, 8% o, 42%w,  
35% m)  
60' SOGCWM  
(12%g, 8%o, 48%w,  
32% m)  
60' SOGCWM  
(43%g, 2%o, 22%w,  
33% m)

IFP: 41-70#  
FFP: 72-107#  
SIP: 490-410#  
HP: 2191-2112#  
BHT: 117 degrees

Serial #: 6773 Outside R & B Oil & Gas Dohm B 1 DST Test Number: 4



DST #4  
4673-4707  
30-60-30-60

1st open: wk blow  
incr to 3-1/4 inches

2nd open: wk blow  
incr to 1-1/4 inch

Rec: 20' Mud / trc oil

IFP: 16-20#  
FFP: 19-26#  
SIP: 209-150#  
HP: 2299-2299#  
BHT: 116 degrees



