



**TRILOBITE
TESTING, INC**

DRILL STEM TEST REPORT

Berexco LLC

22 1s 36w Rawlins KS

2020 N Bramblewood
Wichita KS 67206

Michael #8-22

Job Ticket: 55990

DST#: 5

ATTN: Pete Vollmer

Test Start: 2014.04.16 @ 04:00:00

GENERAL INFORMATION:

Formation: **KCL "E"**

Deviated: No Whipstock: ft (KB)

Time Tool Opened: 06:53:30

Time Test Ended: 12:40:00

Test Type: Conventional Bottom Hole (Reset)

Tester: Robert Zodrow

Unit No: 44

Interval: 4354.00 ft (KB) To 4410.00 ft (KB) (TVD)

Reference Elevations: 3256.00 ft (KB)

Total Depth: 4410.00 ft (KB) (TVD)

3243.00 ft (CF)

Hole Diameter: 7.88 inches Hole Condition: Fair

KB to GR/CF: 13.00 ft

Serial #: 6769 Outside

Press@RunDepth: 120.31 psig @ 4355.00 ft (KB)

Capacity: 8000.00 psig

Start Date: 2014.04.16

End Date:

2014.04.16

Last Calib.:

2014.04.16

Start Time:

04:00:05

End Time:

12:40:00

Time On Btm:

2014.04.16 @ 06:53:00

Time Off Btm:

2014.04.16 @ 10:25:00

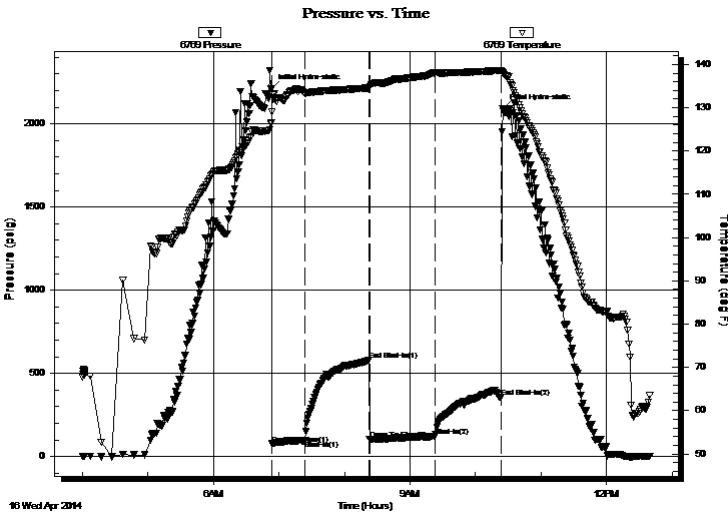
TEST COMMENT: 30-IF- 3" Blow At Open Built To 5"

60-ISI- No Return

90-FF- No Blow

120-FSI- No Return

PRESSURE SUMMARY



Time (Min.)	Pressure (psig)	Temp (deg F)	Annotation
0	2213.20	126.55	Initial Hydro-static
1	76.17	129.01	Open To Flow (1)
31	94.97	133.32	Shut-In(1)
90	580.27	134.57	End Shut-In(1)
90	101.63	134.56	Open To Flow (2)
150	120.31	138.09	Shut-In(2)
211	355.83	138.62	End Shut-In(2)
212	2089.53	138.09	Final Hydro-static

Recovery

Length (ft)	Description	Volume (bbl)
180.00	mw/oil spots 100%m	0.89

Gas Rates

Choke (inches)	Pressure (psig)	Gas Rate (Mcf/d)

* Recovery from multiple tests



**TRILOBITE
TESTING, INC**

DRILL STEM TEST REPORT

FLUID SUMMARY

Berexco LLC

22 1s 36w Rawlins KS

2020 N Bramblewood
Wichita KS 67206

Michael #8-22

Job Ticket: 55990

DST#: 5

ATTN: Pete Vollmer

Test Start: 2014.04.16 @ 04:00:00

Mud and Cushion Information

Mud Type: Gel Chem

Cushion Type:

Oil API:

deg API

Mud Weight: 9.00 lb/gal

Cushion Length:

ft

Water Salinity:

ppm

Viscosity: 64.00 sec/qt

Cushion Volume:

bbbl

Water Loss: 6.80 in³

Gas Cushion Type:

Resistivity: ohm.m

Gas Cushion Pressure:

psig

Salinity: 700.00 ppm

Filter Cake: 2.00 inches

Recovery Information

Recovery Table

Length ft	Description	Volume bbl
180.00	mw /oil spots 100%m	0.885

Total Length: 180.00 ft Total Volume: 0.885 bbl

Num Fluid Samples: 0

Num Gas Bombs: 0

Serial #:

Laboratory Name:

Laboratory Location:

Recovery Comments:

