

AUSTIN B. KLAUS



Cell 785.650.3629
Work 785.483.3145
Ext 225

PO BOX 352
Russell, KS 67665
austin.klaus@johnofarmer.com

Scale 1:240 (5"=100') Imperial
Measured Depth Log

Well Name: Odle #1
Location: Phillips County
License Number: API #15-147-20,736-0000
Spud Date: 4/22/14
Surface Coordinates: Section 36, Township 5 South, Range 18 West
560' FSL & 1,410' FEL
Bottom Hole Coordinates: Vertical well with minimal deviation, same as above
Ground Elevation (ft): 1,889' **K.B. Elevation (ft):** 1,894'
Logged Interval (ft): 2,800' **To:** 3,448' **Total Depth (ft):** 3,450'
Formation: LKC
Type of Drilling Fluid: Chemical (Andy's)

Region: Kansas

Drilling Completed: 4/28/14

Printed by STRIP.LOG from WellSight Systems 1-800-447-1534 www.WellSight.com

OPERATOR

Company: John O. Farmer, Inc.
Address: P.O. Box 352
Russell, KS 67665-0352

Comments

The Odle #1 well was drilled by WW Drilling Rig #6 (Tool Pusher: Mark Bigge).

The location for the Odle #1 well was found via 3-D seismic survey. Geologic samples were collected and evaluated from 2,900'-3,450'. Four bottom-hole tests were conducted in the Lansing, all of which yielded negative results. After all sample, log, and drill stem test data was gathered and evaluated, the decision was made to plug and abandon the Odle #1 well on 4/28/14.

Topeka 2858' (-964)

Ls: tan-lt gry, fn-sub xln, mostly DNS

Sh: lt-drk gry

Sh: ala

Ls: tan-gry, fn-sub xln, mostly DNS, scat chert-off wh

Sh: drk gry-brn

Sh: drk gry-blk

Ls: off wh-tan-gry, fn-sub xln, mostly DNS, scat chalk, chert-off wh

Ls: tan-buff, fossil, mostly DNS, scat int fossil porosity, chalky

Ls: tan-lt gry, fn-sub xln, mostly DNS, chalky, no visible porosity

Sh: lt-drk gry-grn, soft

Ls: tan-gry, fossil, mostly DNS, scat chalk, chert-off wh

Sh: lt gry, soft

Sh: drk gry-brn-rd

Ls: tan-brn, fn-sub xln, DNS, scat chalk, scat fossil

Ls: ala

Sh: drk gry-grn, soft

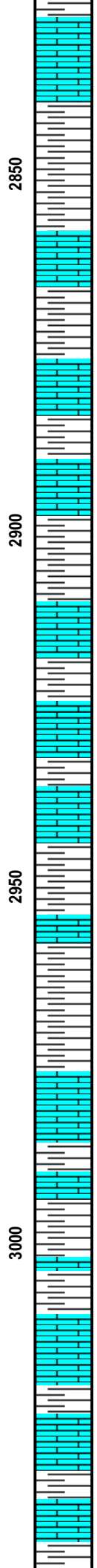
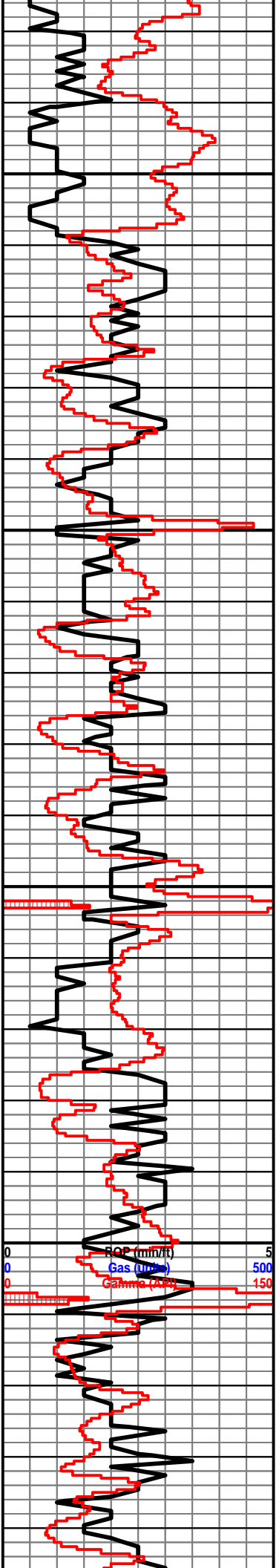
Sh: ala

Ls: off wh-tan, fn xln, poor int xln porosity, sl oil sat, SSFO, sl odor, chalky

Ls: tan-gry, fn-sub xln, mostly DNS, hvy chert-off wh, no visible porosity, NSFO

Sh: drk gry

Ls: tan-gry-brn, fn-sub xln, vry DNS, scat fossil, no visible porosity, scat chalk



Ls: tan-lt gry, fn-sub xln, mostly DNS

Sh: lt-drk gry

Sh: ala

Ls: tan-gry, fn-sub xln, mostly DNS, scat chert-off wh

Sh: drk gry-brn

Sh: drk gry-blk

Ls: off wh-tan-gry, fn-sub xln, mostly DNS, scat chalk, chert-off wh

Ls: tan-buff, fossil, mostly DNS, scat int fossil porosity, chalky

Ls: tan-lt gry, fn-sub xln, mostly DNS, chalky, no visible porosity

Sh: lt-drk gry-grn, soft

Ls: tan-gry, fossil, mostly DNS, scat chalk, chert-off wh

Sh: lt gry, soft

Sh: drk gry-brn-rd

Ls: tan-brn, fn-sub xln, DNS, scat chalk, scat fossil

Ls: ala

Sh: drk gry-grn, soft

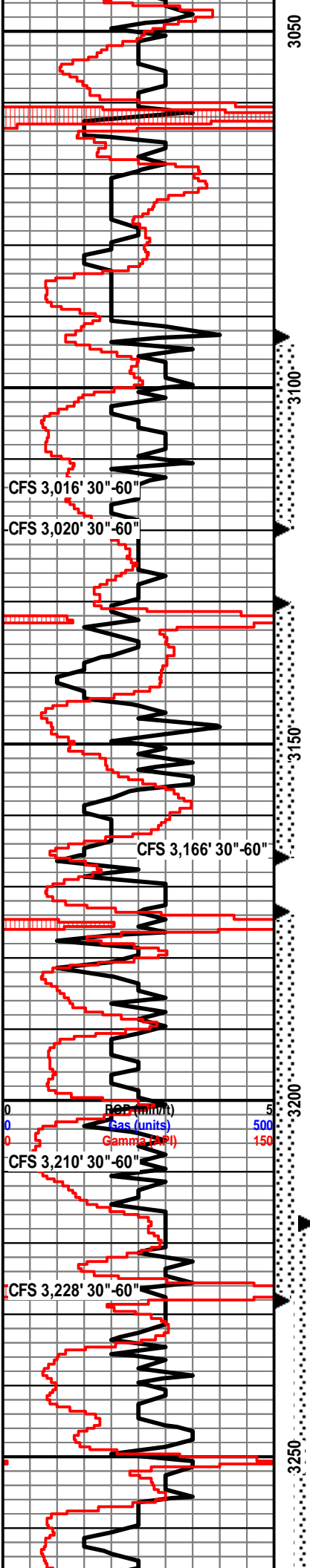
Sh: ala

Ls: off wh-tan, fn xln, poor int xln porosity, sl oil sat, SSFO, sl odor, chalky

Ls: tan-gry, fn-sub xln, mostly DNS, hvy chert-off wh, no visible porosity, NSFO

Sh: drk gry

Ls: tan-gry-brn, fn-sub xln, vry DNS, scat fossil, no visible porosity, scat chalk



Ls: tan-gry, fn xln, vry DNS, no visible porosity, scat chalk

Heebner 3062' (-1168)

Sh: drk gry-blk, carb, fissile

Ls: tan-gry, fn xln, mostly DNS, scat chalk, scat sh: drk gry, soft

Sh: drk gry-brn-grn, vry soft

Sh: ala

Toronto 3091' (-1197)

Ls: tan-lt gry, fn xln, scat int xln porosity, vry lt oil st, NSFO, no odor

Sh: drk gry, scat brn

Lansing 3106' (-1212)

Ls: off wh, fn xln, poor int xln porosity, fair oil sat, SSFO, fair odor, hvy chert-off wh, scat pyrite, sl fossil

Sh: drk gry

Ls: off wh-lt gry, fn-sub xln, mostly DNS, no visible porosity, scat chalk

Sh: drk gry-brn-grn

Ls: off wh-tan, fn xln, poor int xln porosity, scat oil sat, VSSFO, sl odor, chalky, scat chert-off wh

Sh: drk gry-brn-rd

Sh: drk gry-drk brn-rd-grn, few pcs soft

Ls: off wh-tan, fn xln, no visible porosity, scat chert-off wh, chalky

Sh: drk gry-blk

Ls: tan-lt gry, fn-sub xln, vry DNS, no visible porosity, NSFO, scat chert

Ls: off wh-tan, fn xln, vry poor int xln porosity, fossil, VSSFO, sl odor, scat chert-off wht, chalky

Sh: lt gry

Ls: off wh, fn xln, fossil, scat int xln porosity, sl oil st in porosity, SSFO, lt odor, chert-off wh

Sh: drk gry-brn-grn

Sh: blk, carb

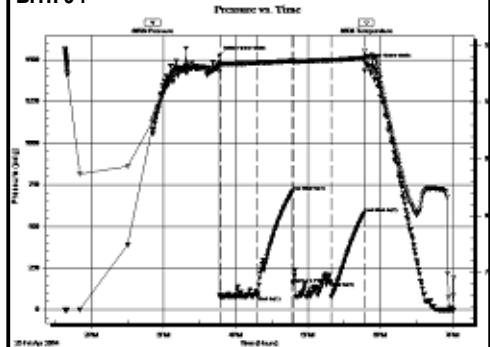
Ls: off wh-lt gry, fn-sub xln, vry DNS, no visible porosity, NSFO, hvy chert-off wh, sl chalky

Sh: lt-drk gry-brn, soft

Ls: off wh-tan, fn xln, scat int xln porosity, sl oil st in porosity, VSSFO, sl odor, chert-off wh, scat chalk

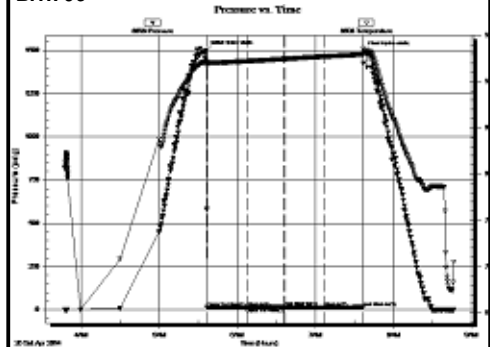
DST #1 3,093'-3,120' (Lansing A)
30"-30"-30"-30"

IF: weak blow built to 1/2"
FF: no blow
Rec: 120' M
FP: 77-81, 155-167#
SIP: 710-581#
HP: 1,524-1,478#
BHT: 94



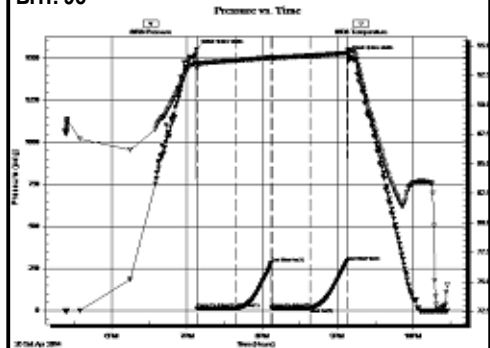
DST #2 3,130'-3,166' (Lansing C)
30"-30"-30"-30"

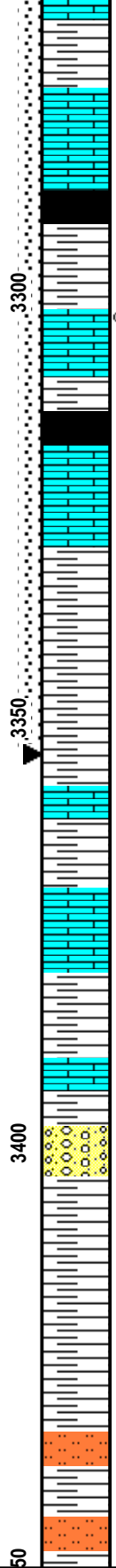
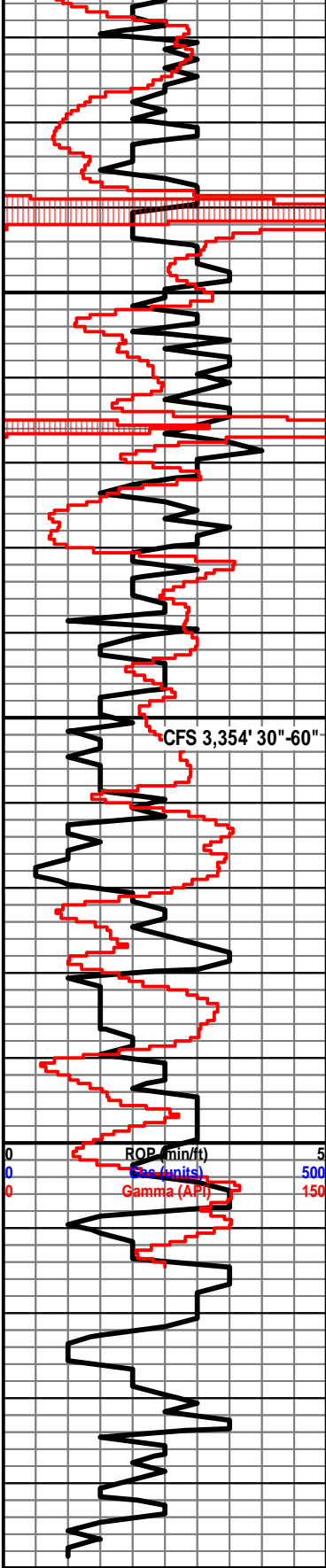
IF: weak blow built to 1/4"
FF: no blow
Rec: 1' M
FP: 13-12, 12-12#
SIP: 16-15#
HP: 1,501-1,495#
BHT: 93



DST #3 3,174'-3,228' (Lansing E-G)
30"-30"-30"-30"

IF: weak surface blow
FF: no blow
Rec: 1' M
FP: 13-15, 15-16#
SIP: 282-292#
HP: 1,553-1,516#
BHT: 95





Sh: lt-drk gry, vry soft

Ls: off wh, fn xln, scat fossil, poor int xln porosity, sl oil st, NSFO, no odor, scat chert-off wh

Sh: drk gry-brn, scat blk, carb

Ls: off wh, fn xln, fossil, scat int fossil porosity, sl oil st in porosity, VSSFO, chert-off wh, scat chalk

Sh: drk gry-blk, carb

Sh: drk gry

Ls: off wh, fn-sub xln, scat int xln porosity, scat oil sat, NSFO, no odor, hvy chert, chalky

B/KC 3333' (-1439)

Sh: drk gry-brn-rd, soft

Sh: drk gry-brn-grn, scat congl: vry DNS

Sh: drk gry-brn, soft

Ls: off wh-tan, fn-sub xln, vry DNS, NSFO, scat sh: drk gry-brn-grn

Ls: ala

Cong: off wh-tan, fn-sub xln, vry DNS

Sh: drk gry-brn-rd, vry soft

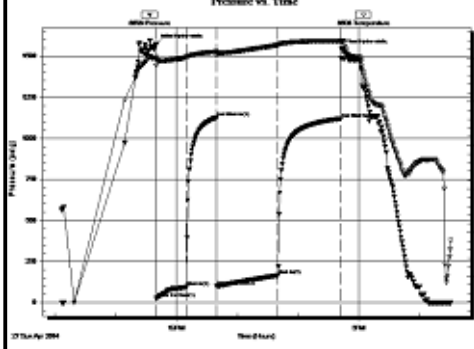
Sh: drk gry-grn

Sh: drk gry-brn-yel, soft

Sh: drk gry-drk brn-rd, soft

Sh: drk brn-rd-yellow, vry soft

DST #4 3,217'-3,354' (Lansing H-L)
 30"-30"-60"-60"
 IF: weak blow built to 9"
 FF: BOB in 50 minutes, no blow back
 Rec: 75' M, 240' MW (20%M, 80%W) (Chl. 65K)
 FP: 24-95, 102-165#
 SIP: 1,127-1,121#
 HP: 1,574-1,541#
 BHT: 97



Wt: 9.2
 Vis: 53