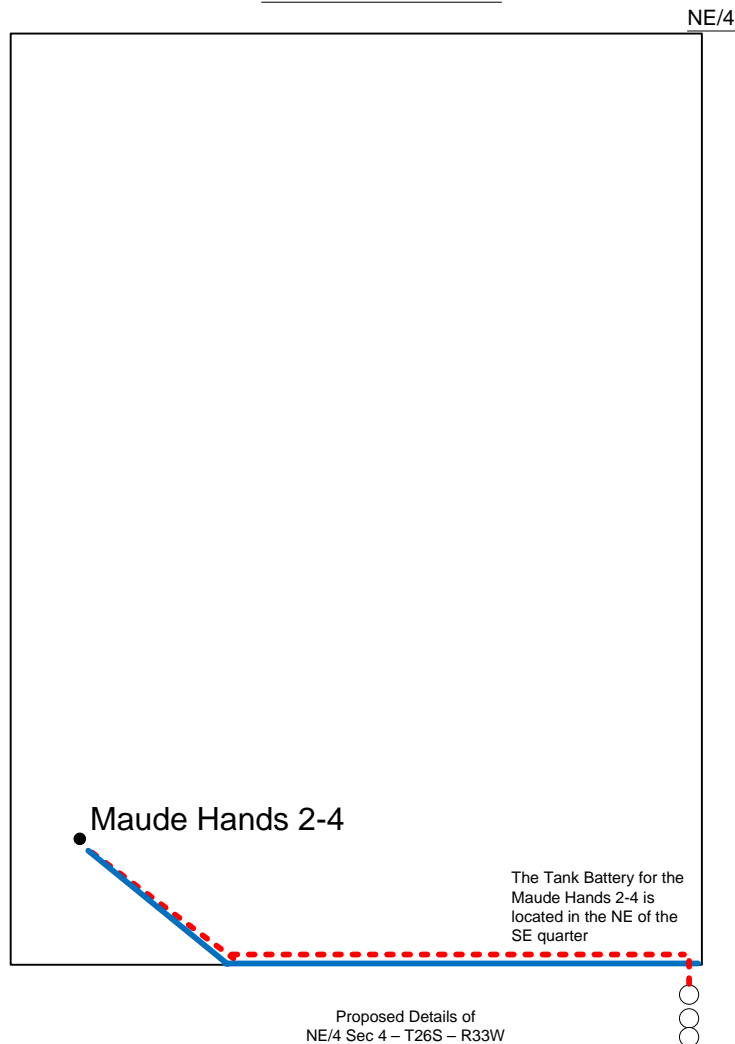
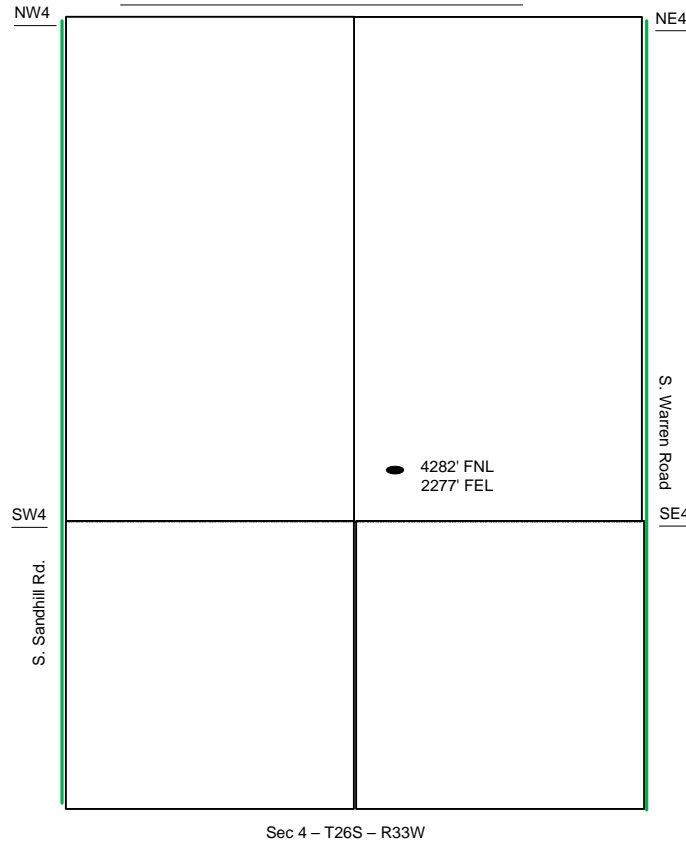


Proposed Plan of Construction

Maude Hands 2-4
4 T26S-R33W
Finney County, KS



- Well Location
- Proposed Lease Roads
- - - Proposed Pipeline
- Proposed Tank Battery
- Proposed Power Lines
- - - Existing Pipeline

Proposed Site Diagram
Maude Hands 2-4
August 5, 2014

Note-Drawing **Not** to Scale