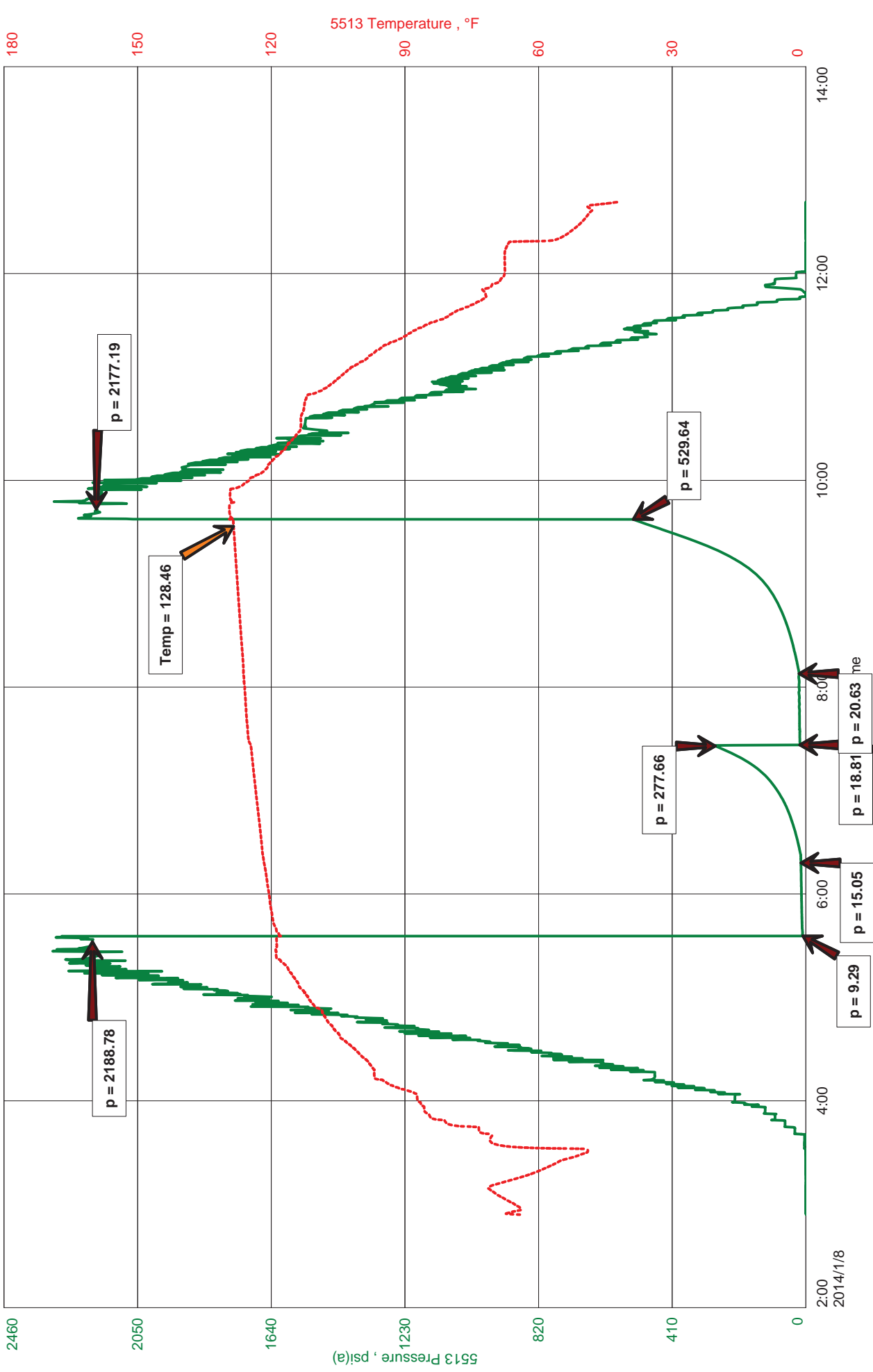


High Bluff Operating LLC  
DST #3 Pawnee 4515-4552  
Start Test Date: 2014/01/08  
Final Test Date: 2014/01/09

Miller 13 #1  
Formation: Pawnee  
Pool: Wildcat  
Job Number: K074

# Miller 13 #1





**JASON MCLEMORE**

**CELL # 620-617-0527**

**General Information**

<b>Company Name</b>	High Bluff Operating LLC	<b>Job Number</b>	K074
<b>Contact</b>	Jamie Brown	<b>Representative</b>	Jason McLemore
<b>Well Name</b>	Miller 13 #1	<b>Well Operator</b>	High Bluff Operating LLC
<b>Unique Well ID</b>	DST #3 Pawnee 4515-4552	<b>Prepared By</b>	Jason McLemore
<b>Surface Location</b>	13-6s-13w-Thomas	<b>Qualified By</b>	Bill Kemp
<b>Field</b>	Wildcat	<b>Test Unit</b>	#7
<b>Well Type</b>	Vertical		

**Test Information**

<b>Test Type</b>	Drill Stem Test	<b>Representative</b>	Jason McLemore
<b>Formation</b>	Pawnee	<b>Well Operator</b>	High Bluff Operating LLC
<b>Well Fluid Type</b>	01 Oil	<b>Report Date</b>	2014/01/09
<b>Test Purpose (AEUB)</b>	Initial Test	<b>Prepared By</b>	Jason McLemore
<b>Start Test Date</b>	2014/01/08	<b>Start Test Time</b>	14:54:00
<b>Final Test Date</b>	2014/01/09	<b>Final Test Time</b>	00:42:00

**Test Results**

**RECOVERED:**

5	SOCM, 5% Oil, 95% Mud
5	Total Fluid



**DIAMOND TESTING**  
P.O. Box 157  
**HOISINGTON, KANSAS 67544**  
(800) 542-7313  
**DRILL-STEM TEST TICKET**  
FILE: miller13dst3

TIME ON: 2:54 PM  
TIME OFF: 12:42 AM

Company High Bluff Operating, LLC Lease & Well No. Miller 13 #1  
Contractor H2 #4 Charge to High Bluff Operating, LLC  
Elevation 3352 GL Formation \_\_\_\_\_ Pawnee Effective Pay \_\_\_\_\_ Ft. Ticket No. K074  
Date 1-8-14 Sec. 13 Twp. \_\_\_\_\_ 6 S Range \_\_\_\_\_ 13 W County \_\_\_\_\_ Thomas State KANSAS  
Test Approved By Bill Kemp Diamond Representative \_\_\_\_\_ Jason McLemore

Formation Test No. 3 Interval Tested from 4515 ft. to 4552 ft. Total Depth \_\_\_\_\_ 4552 ft.  
Packer Depth \_\_\_\_\_ 4510 ft. Size 6 3/4 in. Packer depth \_\_\_\_\_ ft. Size 6 3/4 in.  
Packer Depth \_\_\_\_\_ 4515 ft. Size 6 3/4 in. Packer depth \_\_\_\_\_ ft. Size 6 3/4 in.

Depth of Selective Zone Set \_\_\_\_\_

Top Recorder Depth (Inside) \_\_\_\_\_ 4501 ft. Recorder Number \_\_\_\_\_ 5513 Cap. \_\_\_\_\_ 5000 P.S.I.  
Bottom Recorder Depth (Outside) \_\_\_\_\_ 4502 ft. Recorder Number \_\_\_\_\_ 5588 Cap. \_\_\_\_\_ 6000 P.S.I.  
Below Straddle Recorder Depth \_\_\_\_\_ ft. Recorder Number \_\_\_\_\_ Cap. \_\_\_\_\_ P.S.I.

Mud Type Chemical Viscosity \_\_\_\_\_ 59 Drill Collar Length \_\_\_\_\_ 248 ft. I.D. \_\_\_\_\_ 2 1/4 in.  
Weight \_\_\_\_\_ 9.5 Water Loss \_\_\_\_\_ 13.6 cc. Weight Pipe Length \_\_\_\_\_ 0 ft. I.D. \_\_\_\_\_ 2 7/8 in.  
Chlorides \_\_\_\_\_ 6000 P.P.M. Drill Pipe Length \_\_\_\_\_ 4239 ft. I.D. \_\_\_\_\_ 3 1/2 in.  
Jars: Make STERLING Serial Number \_\_\_\_\_ SJ Test Tool Length \_\_\_\_\_ 28 ft. Tool Size 3 1/2-IF in.  
Did Well Flow? \_\_\_\_\_ Reversed Out \_\_\_\_\_ Anchor Length \_\_\_\_\_ 37 ft. Size 4 1/2-FH in.  
Main Hole Size 7 7/8 Tool Joint Size 4 1/2 XH in. Surface Choke Size 1 in. Bottom Choke Size 5/8 in.

Blow: 1st Open: Weak, Built to 1", No Blowback  
2nd Open: Weak Surface Blow, No Blowback

Recovered _____ <u>5</u> ft. of <u>SOCM, 5% Oil, 95% Mud</u>	
Recovered _____ <u>5</u> ft. of <u>Total Fluid</u>	
Recovered _____ ft. of _____	
Recovered _____ ft. of _____	
Recovered _____ ft. of _____	Price Job
Recovered _____ ft. of _____	Other Charges
Remarks: _____	Insurance
	Total

Time Set Packer(s) 5:36 PM A.M. P.M. Time Started Off Bottom 9:36 PM A.M. P.M. Maximum Temperature \_\_\_\_\_ 128

Initial Hydrostatic Pressure..... (A) \_\_\_\_\_ 2189 P.S.I.  
Initial Flow Period..... Minutes 45 (B) \_\_\_\_\_ 9 P.S.I. to (C) \_\_\_\_\_ 15 P.S.I.  
Initial Closed In Period..... Minutes 60 (D) \_\_\_\_\_ 278 P.S.I.  
Final Flow Period..... Minutes 45 (E) \_\_\_\_\_ 19 P.S.I. to (F) \_\_\_\_\_ 21 P.S.I.  
Final Closed In Period..... Minutes 90 (G) \_\_\_\_\_ 530 P.S.I.  
Final Hydrostatic Pressure..... (H) \_\_\_\_\_ 2177 P.S.I.

Diamond Testing shall not be liable for damages of any kind to the property or personnel of the one for whom a test is made or for any loss suffered or sustained, directly or indirectly, through the use of its equipment, or its statement or opinion concerning the result of any test. Tools lost or damaged in the hole shall be paid for at cost by the party for whom the test is made.