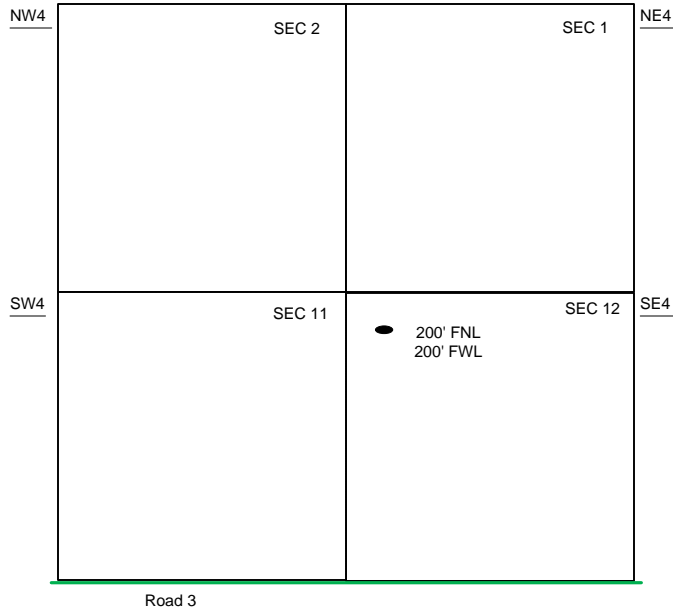
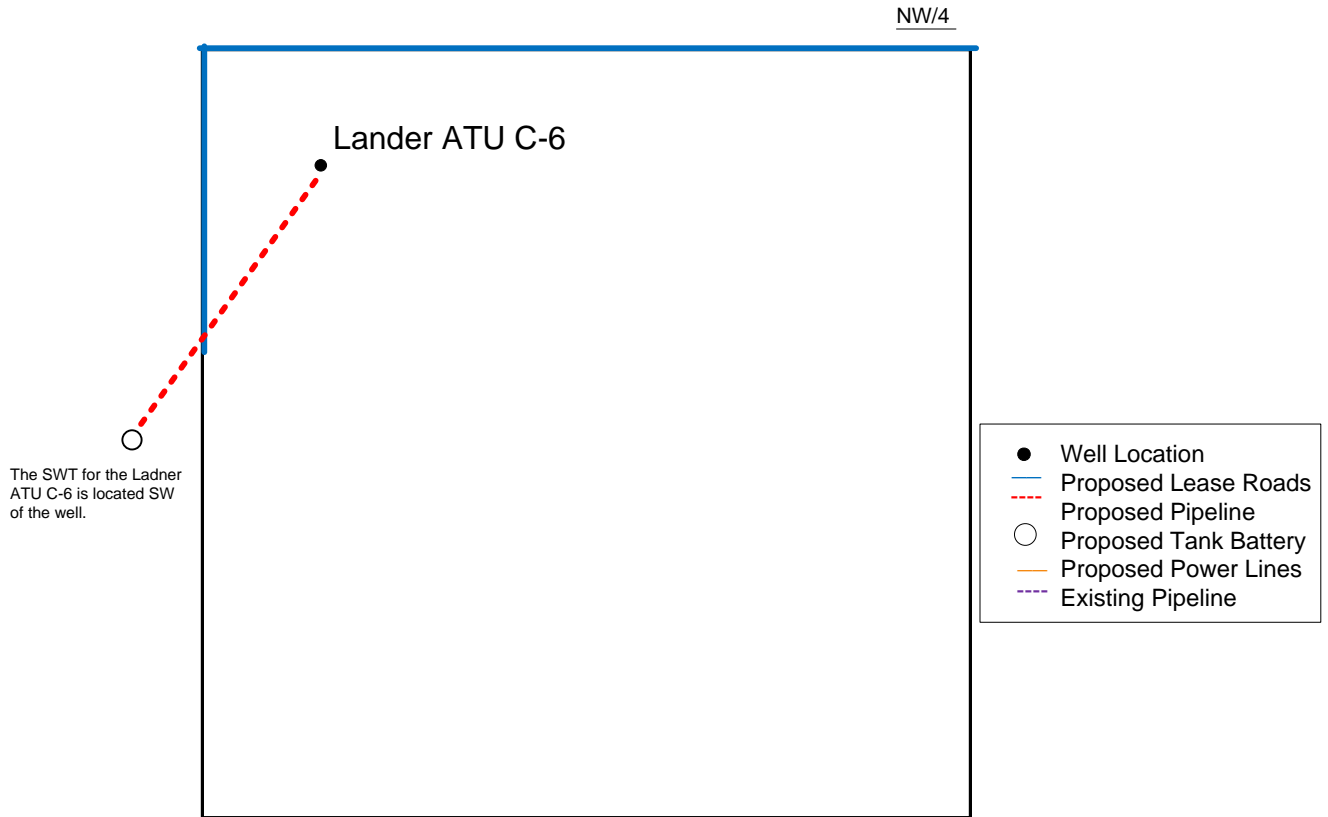


Proposed Plan of Construction
 Ladner ATU C-6
 Sec 12 T27S-R35W
 Grant County, KS



Sec 12 – T27S – R35W



Proposed Details of
 NW/4 Sec 12 – T27S – R36W

Proposed Site Diagram
 Ladner ATU C-6
 August 5, 2014

Note-Drawing **Not** to Scale